

The background of the entire page is a detailed architectural illustration in a sketch-like style. It depicts a city street scene with various buildings, including a prominent multi-story brick building with many windows. There are trees, a street with cars, and a paved area. The illustration is rendered in a palette of muted colors like greys, blues, greens, and browns, with some highlights in yellow and red. The style is reminiscent of a hand-drawn urban plan or a conceptual architectural drawing.

# 2025

## Landscape Architecture

# Short Course

FEBRUARY 4-6

JACKSON STREET BUILDING  
RIVET HOUSE  
CLASSIC CENTER

ATHENS GA

Presented by the  
**University of Georgia**  
College of Environment and Design



Landscape Architecture  
Continuing Education System™



College of Environment + Design  
UNIVERSITY OF GEORGIA

# WELCOME TO THE 2025 SHORT COURSE

Welcome back to the best college town in America! This year, we have 71 in person attendees, 47 virtual attendees, 12 speakers and 22 different corporate sponsors. A huge thanks to our friends at Buck Jones Nurseries and The Outdoor Lights who generously offered to sponsor the Tuesday Social Hour. As usual, Buck Jones will also be sponsoring our Wednesday night social hour. I'd like to thank our Short course advisory committee; Clay Mooney, Terry Baker, Shannon Currey, Adam Kirk, Cecila Probst, and Quynh Pham for their assistance in developing the program for this year's event.

I'd be lying if I didn't give credit to the people who do all the work - Clare Smith, Rosie Kitchens and Tom Jones. All these folks have been a big help in making this event a success. In the words of General Hannibal Smith (Leader of the A Team) "I love it when a plan comes together."

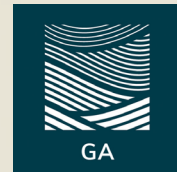
The program features images from the North Athens / Bethel Homes Redevelopment project-which we'll be learning more about during our Wednesday afternoon session and tour.

Thanks again for supporting us.  
Hope y'all have a great time,  
Donnie

## MEET THE EXHIBITORS



TheOutdoorLights



# SHORT COURSE SPEAKERS



Alex Smith



Chris Wakefield



Chris Gordon



Colby Gingles



Bobby Mottern



Bert Kuyrkendall



Albert Harris



Ryan Collins



Charlie Gluodenis



Buck Bacon



Robert Barfield



Shannon Currey



Curt Jackson



Scott Haines

# SCHEDULE

## TUESDAY FEBRUARY 4

**4:30 - 5:30PM: CHRIS WAKEFIELD AND ALEX SMITH**

*Lighting the Way: Collaborative Design for Better Outdoor Experiences*

(1 PDH HSW)

*College of Environment and Design  
Jackson Street Building (285 S Jackson Street)*

**6:00 - 7:00PM: CHRIS WAKEFIELD AND ALEX SMITH**

*Lighting the Way: Rivet House project tour*

(1 PDH HSW)

**6:00PM - 8:00 PM: SOCIAL HOUR**

*Sponsored by Buck Jones Nursery and Outdoor Lights  
Osteria Olio (355 Oneta St Building C2 Suite 200)*

## WEDNESDAY FEBRUARY 5

**7:30 - 8:00AM: BREAKFAST**

**8:00 - 9:00AM: CHRIS GORDON AND COLBY GINGLES**

*Sustainable Solutions in Artificial Grass: Design, Construction, and Certification*

(1 PDH HSW)

**9:00 - 9:30AM: NETWORK WITH EXHIBITORS**

**9:30-10:30AM: BOBBY MOTTERN**

*Climate-Resilient Garden Design: Sustainable Techniques for Stormwater, Drought, and Habitat*

(1 PDH HSW)

**10:30 - 11:00AM: NETWORK WITH EXHIBITORS**

**11:00AM-12:00PM: BERT KUYRKENDALL**

*Designing Complete Streets: Principles and Practices for Landscape Architects*

(1 PDH HSW)

**12:00-1:00PM: LUNCH/NETWORK WITH EXHIBITORS**

**1:00-2:00PM: ALBERT HARRIS**

*Public Furniture: Materials, Sustainability, and Aesthetics*

(1 PDH HSW)

**2:00 - 2:30PM: NETWORK WITH EXHIBITORS**

**2:30-4:00PM: RYAN COLLINS, CHARLIE GLUONDENIS, BUCK BACON, AND ROBERT BARFIELD**

*Panel Discussion - North Downtown Athens - Redevelopment Master Plan for Bethel Village/ College and Hoyt - Planning to Implementation*

(1.5 PDH HSW)

**4:00-5:30PM: RYAN COLLINS, CHARLIE GLUONDENIS, BUCK BACON, AND ROBERT BARFIELD**

*North Downtown Athens Tour - Redevelopment Master Plan for Bethel Village/ College and Hoyt - Planning to Implementation*

(1.5 PDH HSW)

**5:30 - 7:30PM: SOCIAL HOUR**

*Sponsored by Buck Jones Nursery*

*Classic Center (130 Foundry St.)*

# SCHEDULE

## THURSDAY FEBRUARY 6

**8:00-9:00AM: BREAKFAST**

**9:00 - 10:00AM: SHANNON CURREY**

*Native Plants for Stormwater Management:  
Design, Resilience, and Ecological Benefits*  
(1 PDH HSW)

**10:00 - 10:30AM: NETWORK WITH EXHIBITORS**

**10:30-11:30AM: CURT JACKSON**

*Designing Green Roofs: Strategies, Challenges, and Case  
Study Insights*  
(1 PDH HSW)

**11:30-12:30PM: LUNCH/NETWORK WITH EXHIBITORS**

**1:00-2:30PM: BUCK BACON AND SCOTT HAINES**

*Southern Mills: A Redevelopment Story Panel  
Discussion*  
(1.5 PDH HSW)

**3:00-4:30PM: BUCK BACON AND SCOTT HAINES**

*Southern Mills: A Redevelopment Story Site Tour*  
(1.5 PDH HSW)

*Travel on your own for the tour to W&A Engineering's  
office at Southern Mill (355 Oneta Street, Suite D100,  
Athens, Georgia 30601). Transportation not provided.*



# FINDING THE WAY

The Classic Center, Jackson Street Building, Southern Mill, and Bethel Homes



North Campus Parking Deck

Jackson Street Building



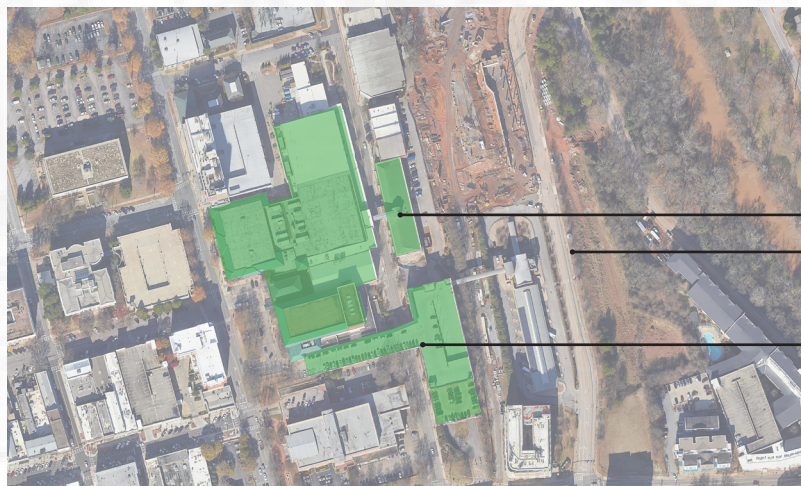
Oneta St.  
Barber St.  
Cleveland Ave.  
Willow St.  
N Thomas St.

SOUTHERN MILL

CLASSIC CENTER

JACKSON ST BUILDING

8 MINUTE DRIVE

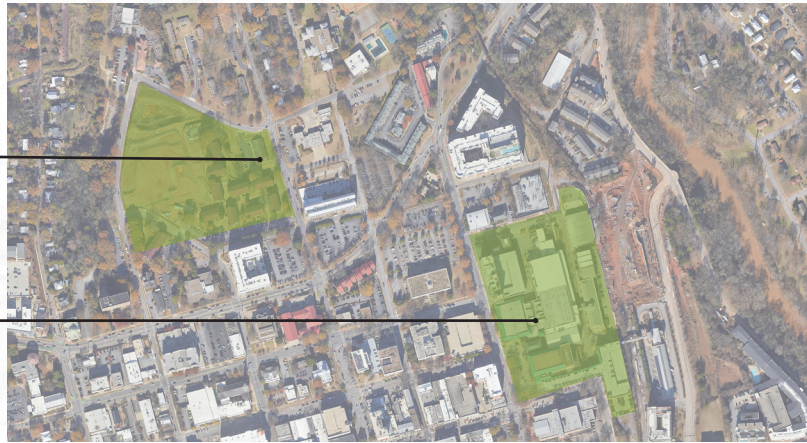


Classic Center Foundry Building  
Classic Center

Classic Center Parking Deck

**Bethel Midtown Village**

**Classic Center**



**Oneta St.**  
**Barber St.**  
**Southern Mill**  
**Cleveland Ave.**  
**Willow St.**  
**N Thomas St.**  
**Classic Center**



**Parking**  
**Rivet House**



# SHORT COURSE

# SPEAKERS

## CHRIS WAKEFIELD

Chris Wakefield, president of The Outdoor Lights, Cumming, Georgia, is a skilled designer of premium landscape lighting for exclusive properties in Georgia, across the United States and international projects. Chris brings extensive experience and knowledge of lighting and landscaping which results in a unique, customized lighting design. Over the past 24 years, Chris and his team at The Outdoor Lights, have installed over 9,500 lighting systems in the southeast and received numerous awards for lighting and design excellence. Chris and his company have become one of the premier outdoor lighting experts in the industry.

## ALEX SMITH

Alex graduated from the Art Institute of Atlanta with a degree in Landscape Design. He began his career as a lead designer under renowned garden designer, Ryan Gainey. During his eight years working with Ryan, Alex was an integral part of creating diverse landscapes throughout the eastern United States. Alex also spent two summers in the Cotswolds of England working under the tutelage of famed British garden designer Rosemary Verey. Alex is a founding member of the Southeastern Horticultural Society and served on its Board of Directors for 12 years. He also served on the Board of Trustees of the Institute of Classical Architecture, Southeast Chapter. Alex currently serves on the Board of Directors of the Cherokee Garden Library and is a member of the American Horticultural Society. He is a native of Macon, Georgia. In his free time he enjoys traveling, cooking, fishing, golf, and following Georgia Bulldogs football. He lives with his wife and three daughters in Dunwoody, Georgia

## COLBY GINGLES

Colby Gingles is an experienced speaker with a strong foundation in sales and design. He frequently engages with architects, developers, and distributors, offering a well-rounded perspective on synthetic surfacing options. His primary focus is on educating his audience about industry trends, global projects, and innovations within SYNLaw, the leading global provider of artificial grass. Through his presentations, Colby helps individuals from various backgrounds and disciplines make informed choices regarding American-made products and cutting-edge developments. He expertly sheds light on the intricacies of manufacturing and installation, particularly in sectors like Multi-Family, municipal projects, and healthcare.



Rivet house : Photo Courtesy of The Rivet House



## CHRIS GORDON

Chris Gordon serves as the Director of Sales and Operations for SYNLawn of Georgia and Alabama, overseeing sales and installations across these regions. With a decade of experience at SYNLawn and a lifelong connection to synthetic turf—thanks to his father’s career as a mechanical engineer and inventor with AstroTurf—Chris brings a deep well of expertise to the industry. His comprehensive knowledge of synthetic turf and construction has enabled him to build strong relationships with architects, developers, general contractors, and landscape designers. Additionally, as a Certified Playground Safety Inspector (CPSI), Chris ensures that all playground installations meet the highest safety standards.

## BOBBY MOTTERN

Bobby Mottern is Director of Horticulture at Sarah P. Duke Gardens. He leads a dynamic team of 16 horticulturists who manage the 55 acre botanic garden in the heart of the Duke University campus. Garden staff nurture a variety of display spaces including vibrant herbaceous borders, rose garden, organic vegetables, native plants, a Japanese garden, aquatic plantings and many other horticultural features. Bobby also oversees the garden’s physical operations, project management and participates in a variety of educational programming. Bobby studied horticulture at Clemson and acquired his Masters in Landscape Architecture from the University of Georgia in 2006. Bobby joined Duke Gardens in 2009. Prior to that he worked as a landscape architect in Raleigh and was director of horticulture at Brookgreen Gardens in Pawleys Island, SC.

## BERT KUYRKENDALL

Bert, a Senior Associate at TSW, has more than 25 years of experience as a Transportation Planner and Engineer. Bert’s planning work focuses on helping cities and towns become more sustainable, just, and livable places. He has led and collaborated on transportation plans, comprehensive plans, corridor studies, bike/ped network plans, and Complete Streets design projects. As an engineer and planner, Bert brings a balanced approach to transportation planning and implementation. He has extensive experience in street and multimodal facility design, with a firm grasp on state and city/county design standards, including the ability to modify and draft new transportation standards.

## ALBERT HARRIS

Albert is Brand Development Manager for mmicité USA & Canada. He has a background in architecture, planning and was a practicing Landscape Architect. He has 14+ years of design experience. His undergraduate degree is in Architecture from The University of North Carolina at Charlotte. He earned his MLA at The University of Pennsylvania. He has been a bartender, truck driver, commercial photographer, & helped grow 4 successful businesses along the way. Albert understands the value and importance of wonderful open spaces and the public realm. He has shepherded many projects from concept design and public input, to estimating and budgeting, grant application, schematic and engineering design, bidding, construction oversight, and maintenance. Prior to joining TSW, Bert was a Transportation Planner and Engineer with Orion Planning + Design, Gresham Smith, and City Transportation Engineer for the City of Chattanooga. He is well-traveled and has a love for words and artful expressions.



Bethel Homes Rendering: Photo Courtesy of Georgia Municipal Association

## **RYAN COLLINS**

Ryan is a Senior Principal and Vice President for Dix.Hite + Partners, leading planning and design efforts for public and private clients around the southeast with a focus on community development work in towns and cities across Alabama. He currently serves on the Leadership Advisory Council for CLARB, the Board of Directors for Conservation Alabama, and the Board of Directors for ACE Mentors of Alabama. He is an active and passionate volunteer for Design Alabama and the Sunshine Rotary Club of Birmingham.

## **CHARLIE GLUONDENIS**

Charlie is the Chief Real Estate Officer for the Athens Housing Authority. He is responsible for capital improvements, neighborhood revitalization, and affordable housing finance and construction. He oversees all new construction and modernization of public housing assets, infill housing and homeownership programs funded with CDBG & HOME through ACCGov, and all aspects of AHA mixed-income / mixed-finance affordable housing projects. The Athens Housing Authority's goal is to create vigorous neighborhoods and support the success of the families they serve while working with Athens-Clarke County for the development of long-term goals for affordable housing for the community.

## **BUCK BACON**

Buck currently serves as W&A Engineering's Government and Community Services Director where he leads planning and land development programs and projects focused on non-profit organizations, local, state, and federal government agencies, industrial and economic development programs, and projects with a regional impact. Buck has previously served as the Director of Engineering and Director of Corporate Culture and Career Planning at W&A. He also worked in local government before joining the W&A team. Buck's efforts are client focused with an emphasis on applied civil engineering and urban design principles in support of W&A's client's missions.

## **ROBERT BARFIELD**

Robert, as Vice President of Construction Services of Columbia Residential, is accountable for all aspects of planning and design for new and rehabilitation construction developments. He serves as a liaison between the General Contractor and affiliated trades, engineers, architects, attorneys, public officials, community representatives, and owners. Robert's construction-related experience spans more than 18 years and 4,000 multifamily units, including recent, award-winning successes with our West Highlands and Mechanicsville communities in Atlanta, and Columbia Parc in New Orleans.

## **SHANNON CURREY**

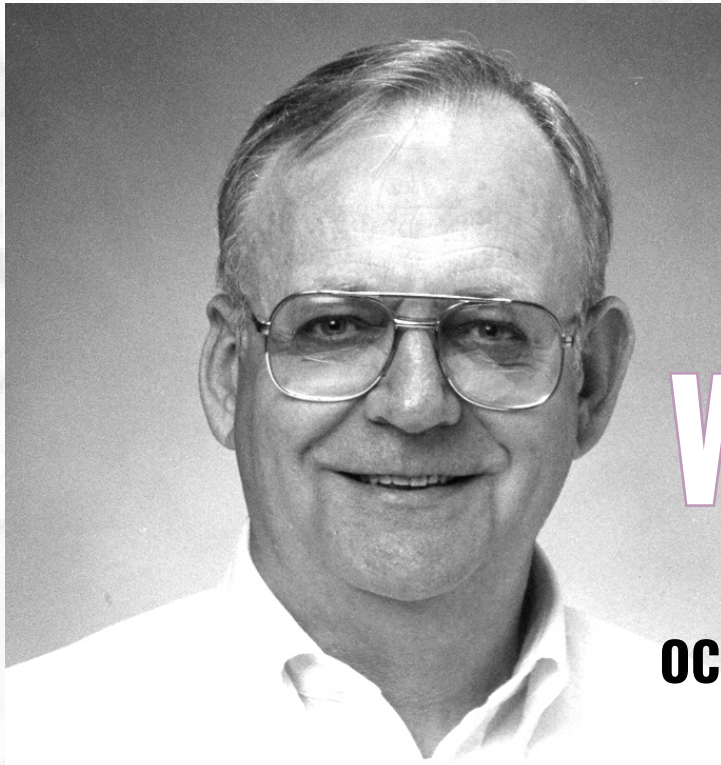
Shannon Currey is a horticultural educator with Izel Native Plants. She began her work life as a social scientist, investigating the interplay of attitudes, health behaviors, and quality of life. She changed careers in 2003 to study horticultural science and landscape design at North Carolina State University. She's worked in the nursery industry since 2006, establishing herself as an expert on grasses and sedges. In recent years, she has expanded her expertise to native perennials. Shannon has shared her knowledge in nationally published articles and traveled the country speaking to professional organizations, community groups, and at public gardens. She currently serves on the North Carolina Plant Conservation Program Scientific Committee, advises several organizations on horticultural programming, has served on the Boards of the Perennial Plant Association and the Perennial Plant Foundation, and has been recognized by the North Carolina Nursery & Landscape Association with the Libby Wilder Award for her contributions to the industry. Shannon lives in Durham, North Carolina and loves exploring horticulture and native flora everywhere she goes.

## **CURT JACKSON**

Curt Jackson is the Atlanta Director of Landscape Architecture at W&A Engineering, where he leads a diverse range of landscape architecture initiatives. With over 15 years of experience as a landscape architect and planner, Curt has worked on projects across the country, including in higher education institutions, mixed-use developments, and residential communities. He has a deep passion for community-building design and applies his expertise to create meaningful, sustainable spaces that enhance both the built environment and quality of life. Curt's connection with the University of Georgia began in childhood, shaping his decision to pursue his education at UGA. He graduated from the UGA College of Environment and Design with a degree in Landscape Architecture, which laid the foundation for his career. Curt is deeply engaged with the Georgia Chapter of ASLA, where he has served in leadership roles, including President and lead coordinator for the Southeast Regional Conference. He is also a member of the Dean's Advisory Council for the College of Environment and Design.

## **SCOTT HAINES**

Scott Haines is Director of Landscape Architecture at W&A Engineering. Haines obtained his Bachelor's degree in Landscape Architecture from The University of Georgia in May 2004. Since joining W&A in September 2004, Haines has proved to be a valuable asset to the firm. His responsibilities as project manager include coordination of all rezones, analysis and design for commercial and residential projects, entrance/amenity design, and construction management. He also coordinates the color renderings and models produced through the latest CAD and other advanced computer graphics software programs. Haines is a LEED Accredited Professional and has worked on certifying teams for both LEED NC and LEED for Homes projects.



# REMEMBERING NEAL WEATHERLY

**OCTOBER 4 1939-JANUARY 6 2025**

The CED community is deeply saddened by the recent passing of Neal Weatherly, BLA 1962 and MLA 1970.

Neal was a noted plantsman and beloved professor emeritus with roots in a family nursery business. Weatherly taught plant identification and planting design to countless students over many years. He was involved with the School of Environmental Design Alumni Association and served as its President in 1988-89 and for several years coordinated the Landscape Architecture Short Course. His service beyond the CED included coordinating the Georgia LARE Review as well as authoring or co-authoring eighteen publications while working with the UGA Cooperative Extension.

In 2005, Neal was honored as the recipient of the CED's distinguished alumni award for his years of service and dedication to the College and the profession. This is the highest honor bestowed by the CED.

In 2014, the Neal Weatherly Scholarship in Landscape Architecture was founded in his honor, which provides support to BLA students.

Scan the QR Code below to view tributes to Neal and to make a gift to his namesake scholarship.



# SUPPORT THE

# FOUNDERS MEMORIAL

# GARDEN

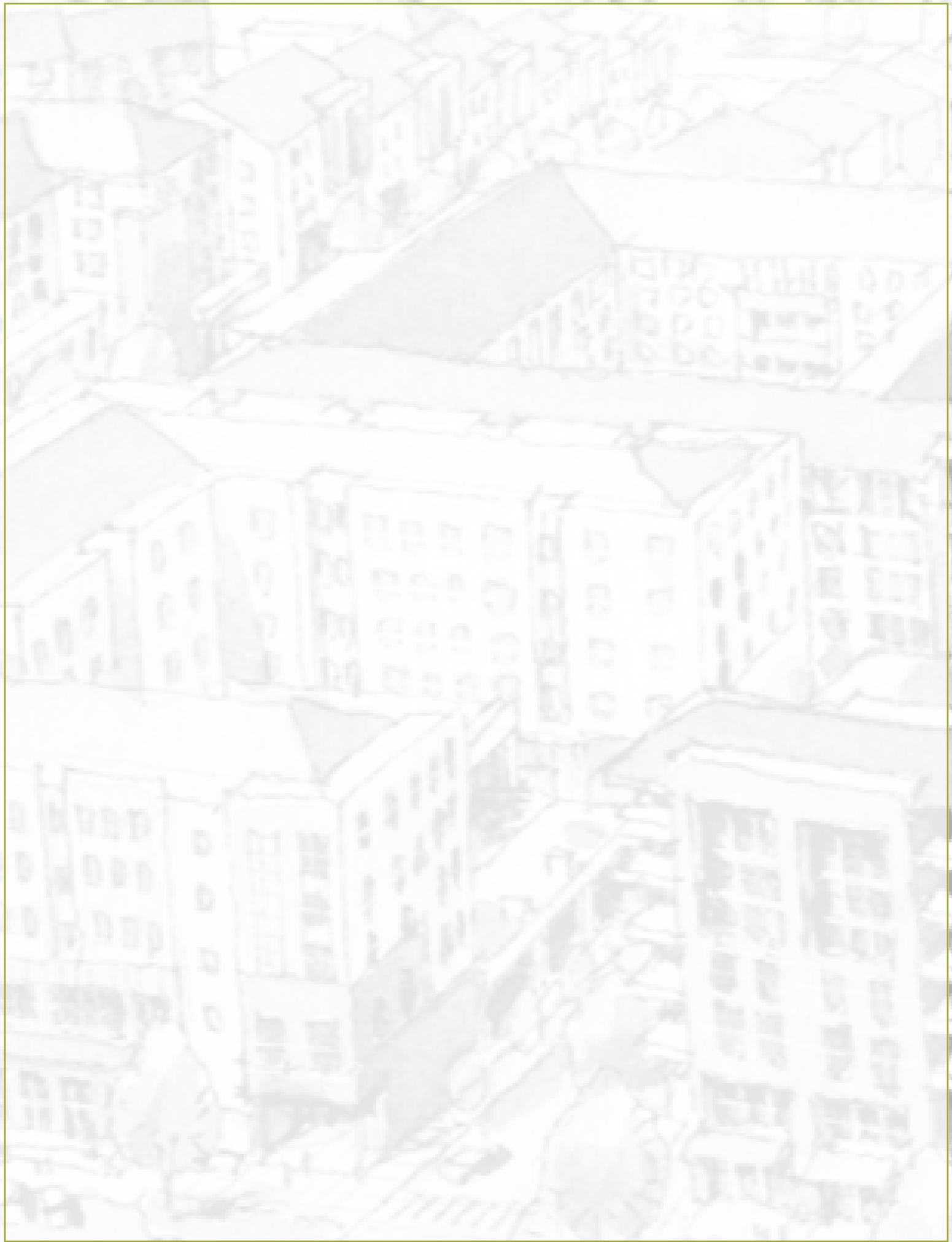
The Founders Memorial Garden is a living testament to the vision, achievements, and sacrifices of those who shaped our community. For years, this historic garden has been a place of learning, celebration, and connection. However, time takes its toll, and this ever-evolving landmark demands constant maintenance. This campus and community treasure relies solely on private funding for conservation and restoration efforts.

Give \$50 or more and receive an 8×10 sketch of the garden by Jack Crowley, UGA College of Environment and Design Professor Emeritus, former Dean, and MUPD program founder.



**KEEP THE  
GARDEN  
GROWING**







Landscape Architecture  
Continuing Education System™



College of Environment + Design  
UNIVERSITY OF GEORGIA