

## INTRODUCTION TO PADLET

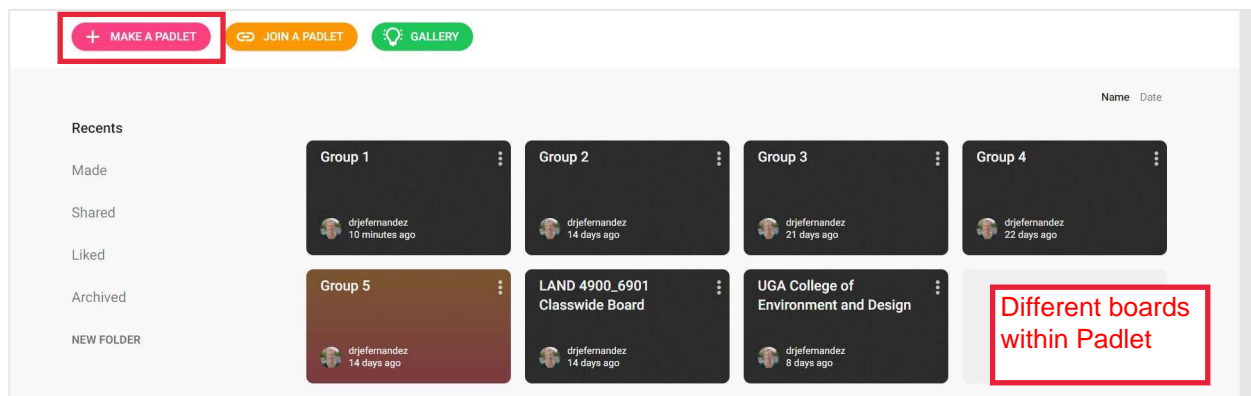
For studios and other collaborative work, Padlet is a simple and user-friendly platform to accommodate online or hybrid learning.

### Uses in Design Education

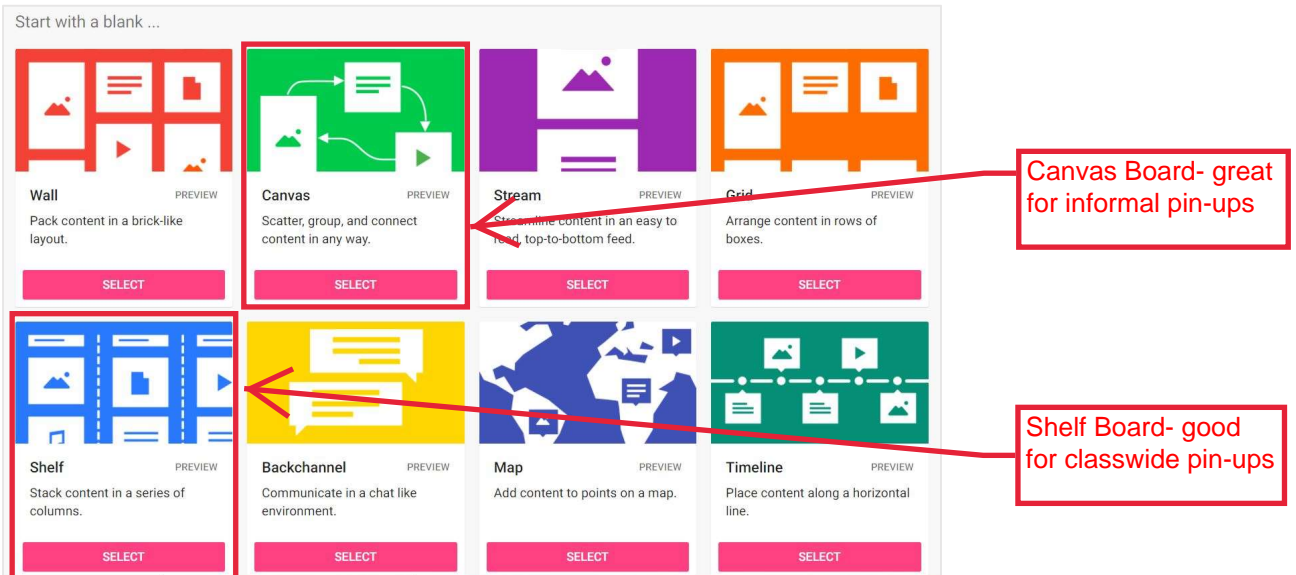
- Online pin-up board that can accommodate most file formats, including large image files, multi-page PDFs, video files, on-screen sketches, and internet links.
- Good for informal online reviews, taking the place of desk crits or casual wall pin-ups when combined with Zoom or other online conferencing platform.
- Boards can be shared with individuals, groups, and/or an entire class, and multiple boards might serve one course.
- Padlet can be viewed on computer and also has an application (app) for the iPad, Smartphone, and other devices.
- Padlet application, such as the iPad Padlet app, works seamlessly with other programs such as Morpholio (a tracing/drawing/design app). Drawings can be moved easily and directly between the programs for drawing mark-ups and redlines.
- Students can take photos or scan work on their smartphones and upload directly into Padlet.
- Posts on boards can be easily transferred or copied between different boards, such as from an individual or group board to a classwide board.

### Getting Started

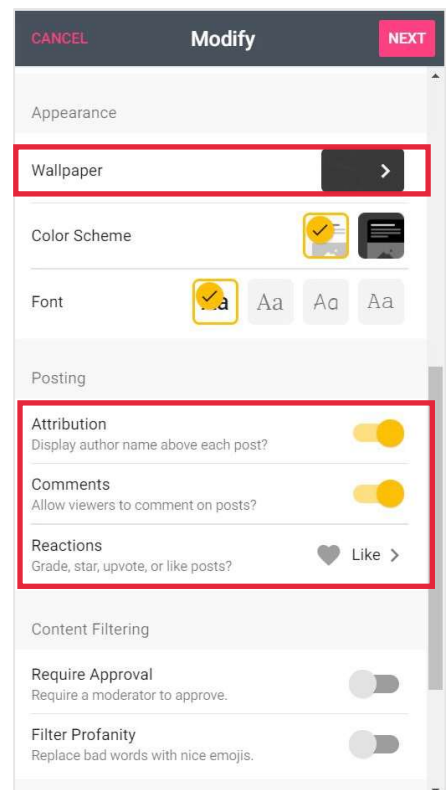
1. Upon opening Padlet, you create a digital 'pin-up' board by selecting *Make a Padlet* button.
  - a. It is possible to make group boards with limited members, and a classwide board with access by all.



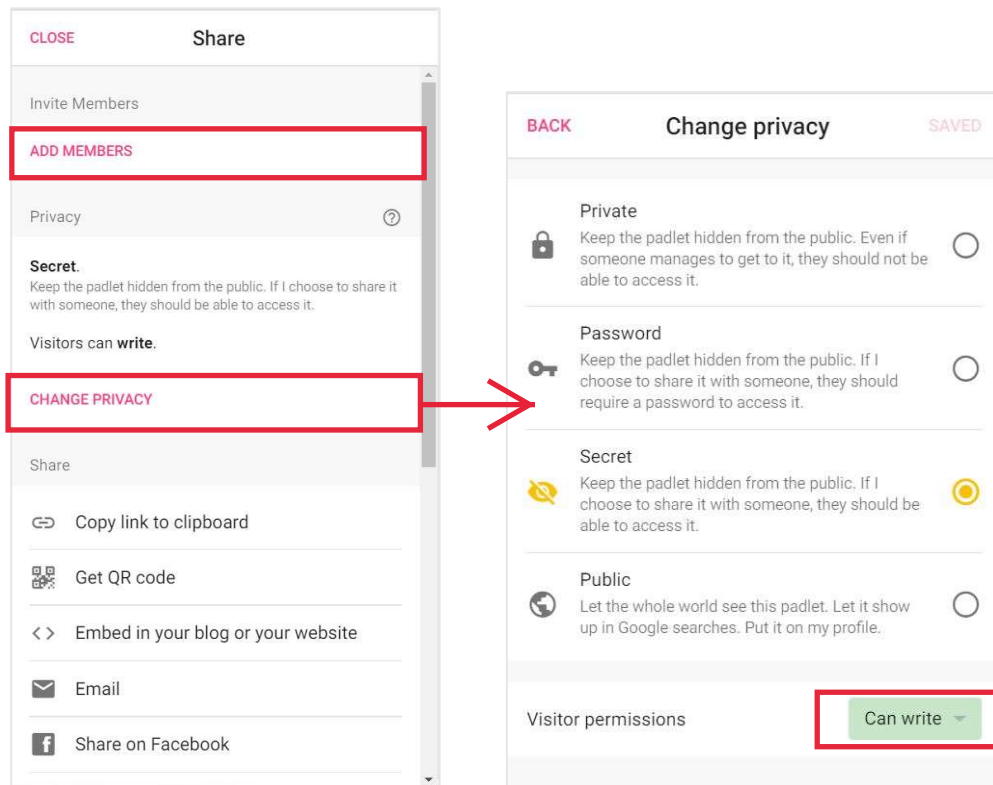
2. Several layout options appear for your board.
  - a. Canvas- good for group work, allowing maximum flexibility. However, this board can get 'messy' and may need cleaning between assignments.
  - b. Shelf- good for classwide feedback on projects. Each student or student group can have their own 'shelf,' with individual or group names at the top of each column.



3. After a layout is selected, the *Modify* tab opens. Here you control the title, appearance, and posting options for the padlet board.
  - a. Wallpaper- Under *textures and patterns*, the linen and blueprint options may provide minimal background distraction while still providing some texture.
  - b. Posting
    - i. Turn on *attribution* to see the contributor of each post
    - ii. Turn on *comments* for class feedback on one another's work
    - iii. *Reactions* such as the ability to 'like' posts mimic social media and encourage students to interact. You can also choose the ability to post a grade here.



4. Sharing and Privacy- At the top right hand of your newly created board, select the *Share* tab.
  - a. Here you can add students to a board in various ways, including via email, by clicking *add members*.
  - b. Select *change privacy* to adjust privacy settings. Students will need the ability to *write* in order to post and give one another feedback.



## Benefits

- Very approachable and user-friendly for a broad audience. Little to no learning curve for instructors or students.
- Personable platform that is great for student online interaction.
- Enables informal design and process critiques from afar.

## Limitations

- Padlet is good for informal reviews and critiques, but not necessarily for formal presentations.
- You cannot mark up drawings directly in Padlet. They must be brought into another program and then posted here.
- Padlet relies on video conferencing, which is not built in.
- Some thought has to be put into it to make its appearance appropriate for higher education, such as using a plain backdrop.