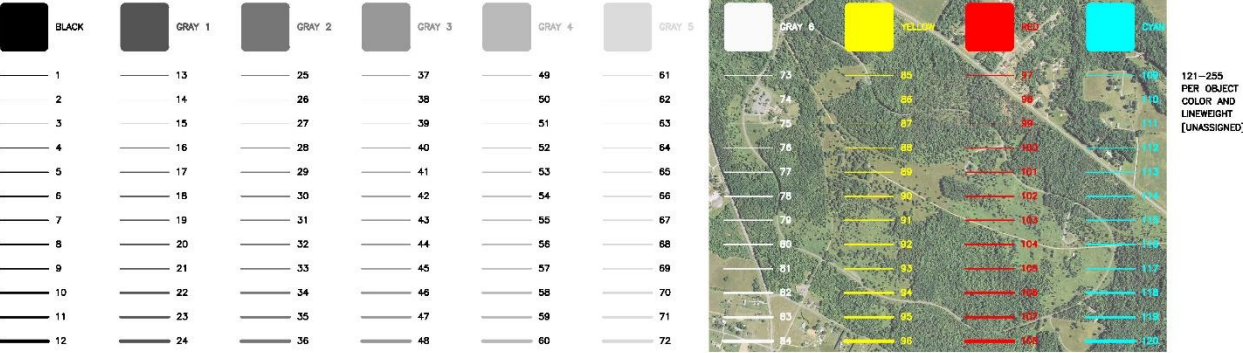
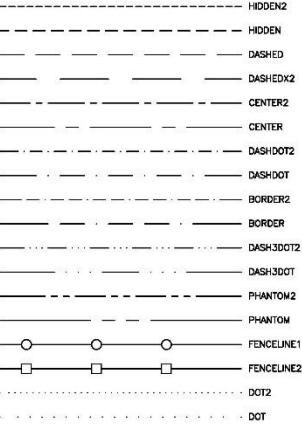


# CED CAD Standards Synopsis

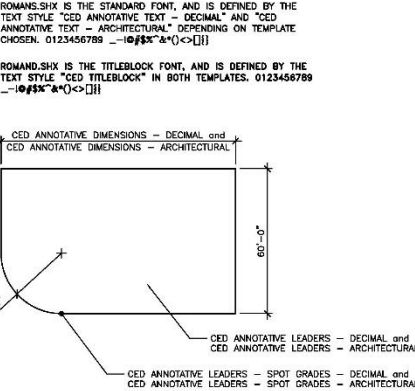
## CED STANDARD LINEWEIGHTS AND SCREENING



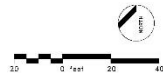
## CED STANDARD LINETYPES



## CED STANDARD TEXT AND DIMENSIONS



ARCHITECTURAL SCALE FACTORS	
$\frac{1}{32}''=1'-0''$	3072
$\frac{1}{16}''=1'-0''$	1536
$\frac{3}{32}''=1'-0''$	768
$\frac{1}{8}''=1'-0''$	384
$\frac{3}{16}''=1'-0''$	192
$\frac{1}{4}''=1'-0''$	128
$\frac{3}{8}''=1'-0''$	66
$\frac{1}{2}''=1'-0''$	64
$\frac{3}{4}''=1'-0''$	48
$\frac{7}{8}''=1'-0''$	32
$1''=1'-0''$	24
$1\frac{1}{4}''=1'-0''$	16
$1\frac{1}{2}''=1'-0''$	12
$2''=1'-0''$	8
$3''=1'-0''$	4
$6''=1'-0''$	2



CED / UGA

COLLEGE OF ENVIRONMENT AND DESIGN  
CAD STANDARDS

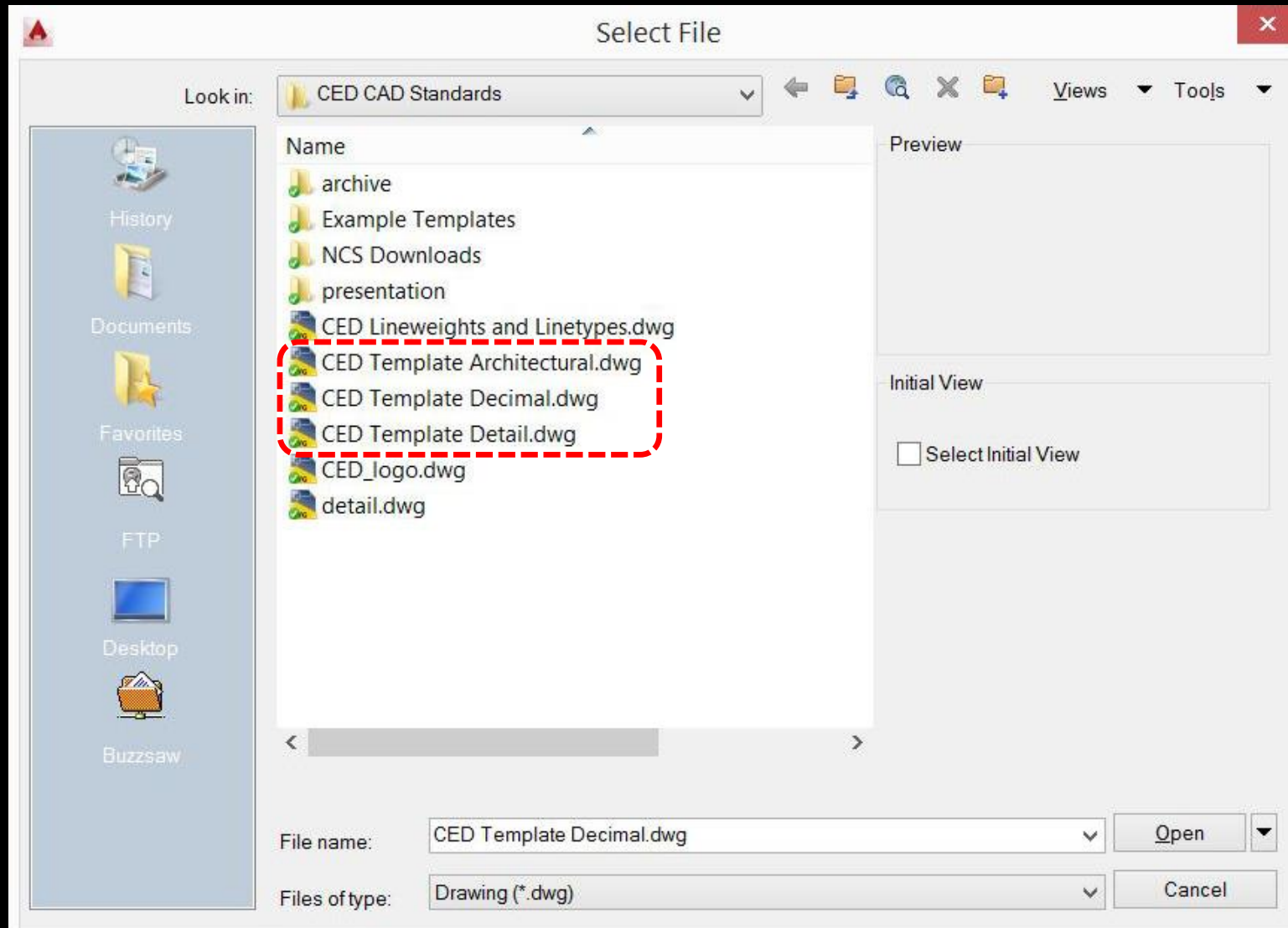
NO.	NOTES	DATE

DRAWN BY  
DATE: 8/24/2014  
SCALE: 1"=60'

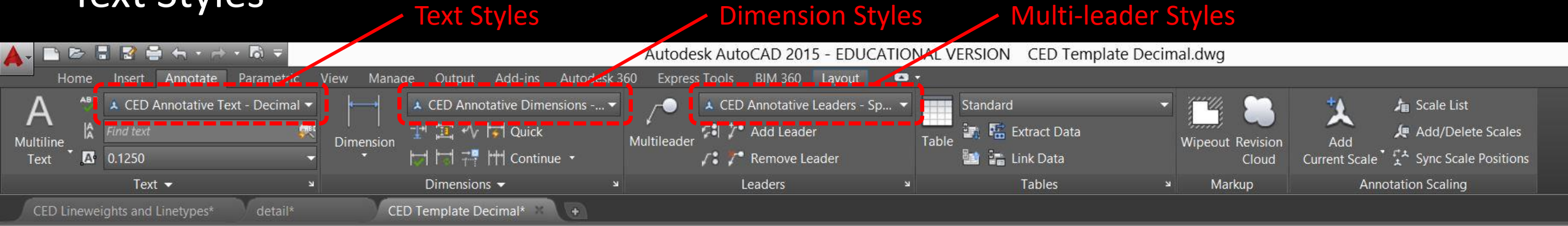
SHEET TITLE:  
STANDARD LINE WEIGHTS,  
LINE TYPES, TEXT STYLES,  
DIMENSION STYLES, AND  
GENERAL EXAMPLES

SHEET NUMBER:  
1

# Templates



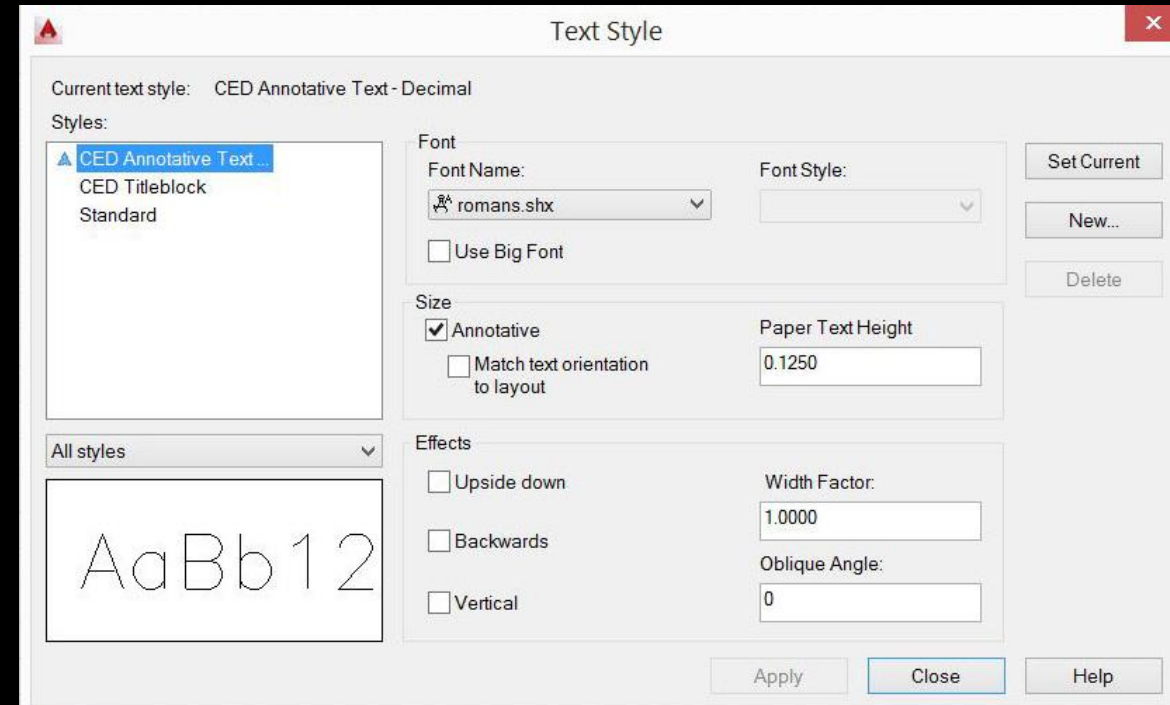
# Text Styles



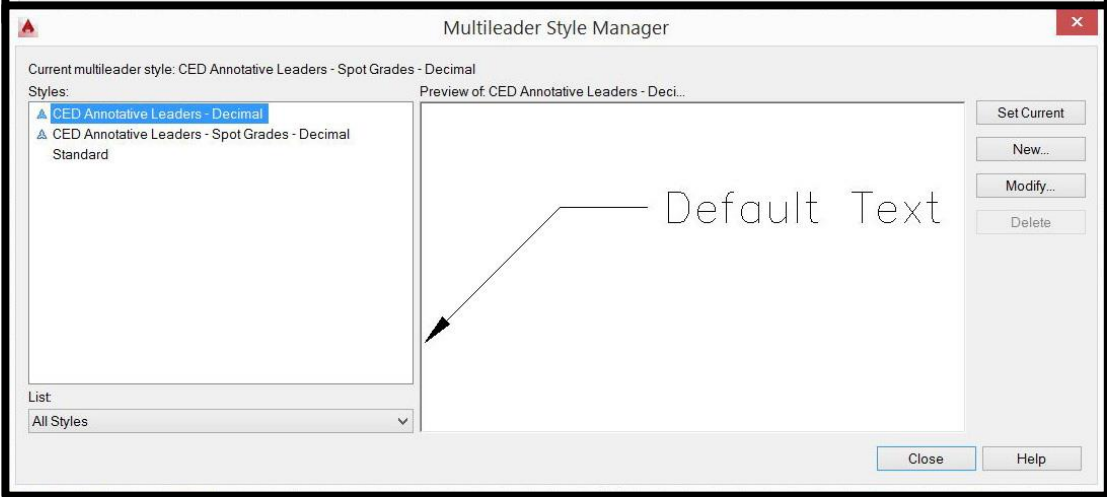
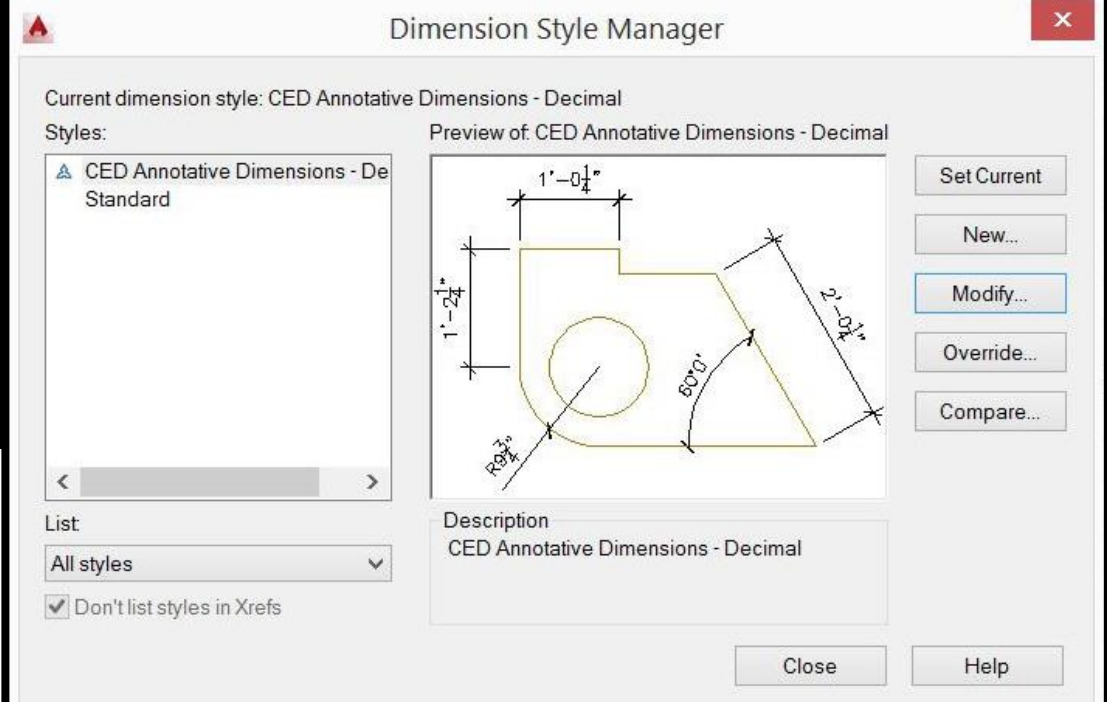
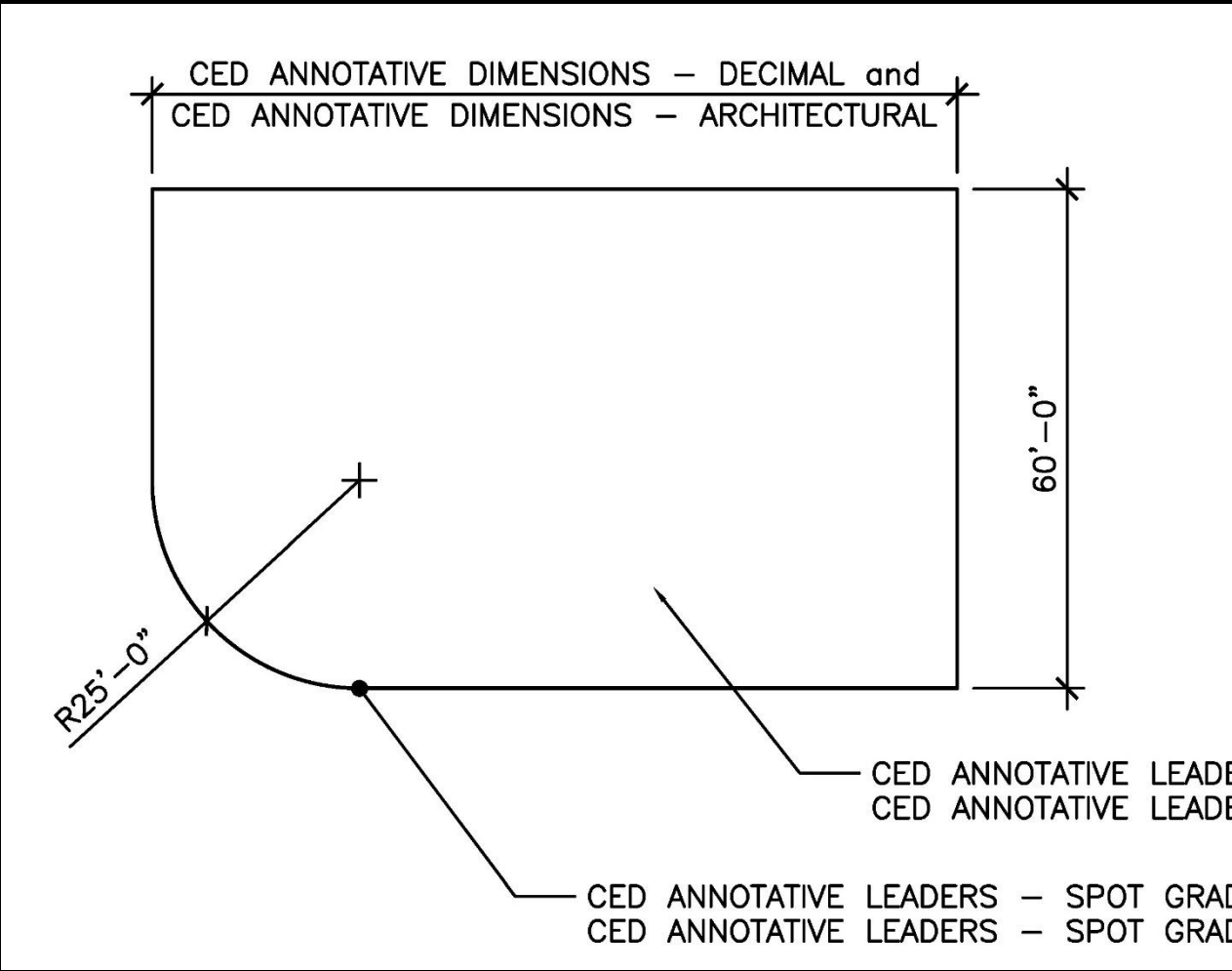
## CED STANDARD TEXT AND DIMENSIONS

ROMANS.SHX IS THE STANDARD FONT, AND IS DEFINED BY THE TEXT STYLE "CED ANNOTATIVE TEXT – DECIMAL" AND "CED ANNOTATIVE TEXT – ARCHITECTURAL" DEPENDING ON TEMPLATE CHOSEN. 0123456789 \_-!@#\$\$%^&\*()<>[]{}

ROMAND.SHX IS THE TITLEBLOCK FONT, AND IS DEFINED BY THE TEXT STYLE "CED TITLEBLOCK" IN BOTH TEMPLATES. 0123456789 \_-!@#\$\$%^&\*()<>[]{}



# Dimension / Multi-leader Styles



# Titleblocks

Logo in block as CAD entities

All titleblock text information included  
as editable attributes of the block:

Student Information

Project Information

Revision / Issue box

Drawn / Date / Scale box

Sheet Title

Sheet Number

North arrow is a separate block

Scale is a separate block,  
with editable attributes

UNIVERSITY OF  
**GEORGIA**  
College of  
Environment + Design

STUDENT NAME  
STUDENT INFORMATION

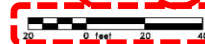

PROJECT NAME  
PROJECT INFORMATION  
PROFESSOR  
CLASS  
INFORMATION

REV	DESCRIPTION	DATE
1	SCHEMATIC DESIGN	04/24/14

DRAWN: TJ  
DATE: 05/24/2014  
SCALE: 1"=20'

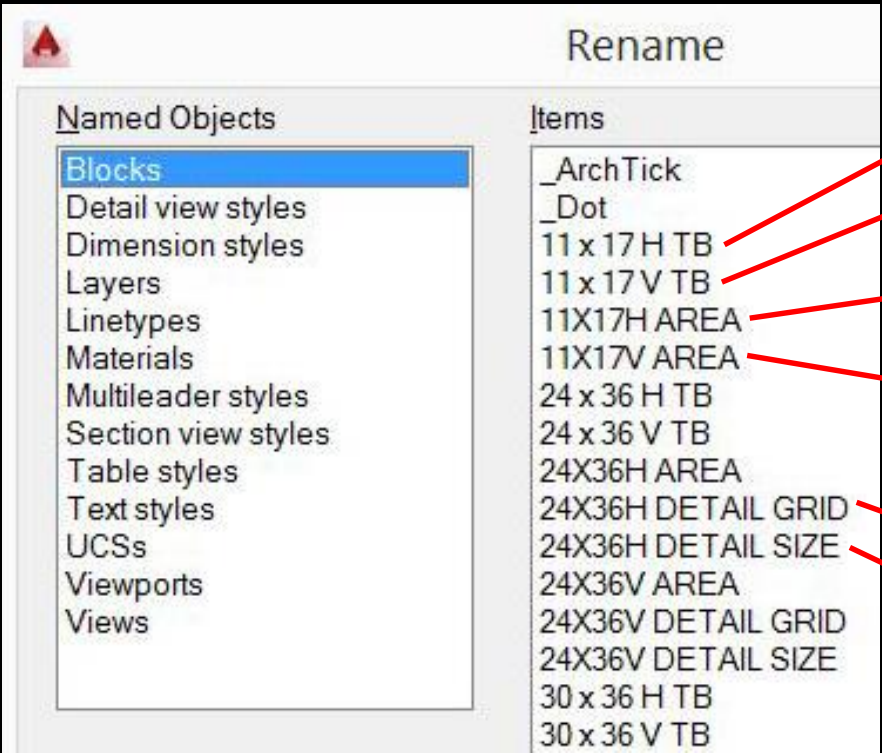
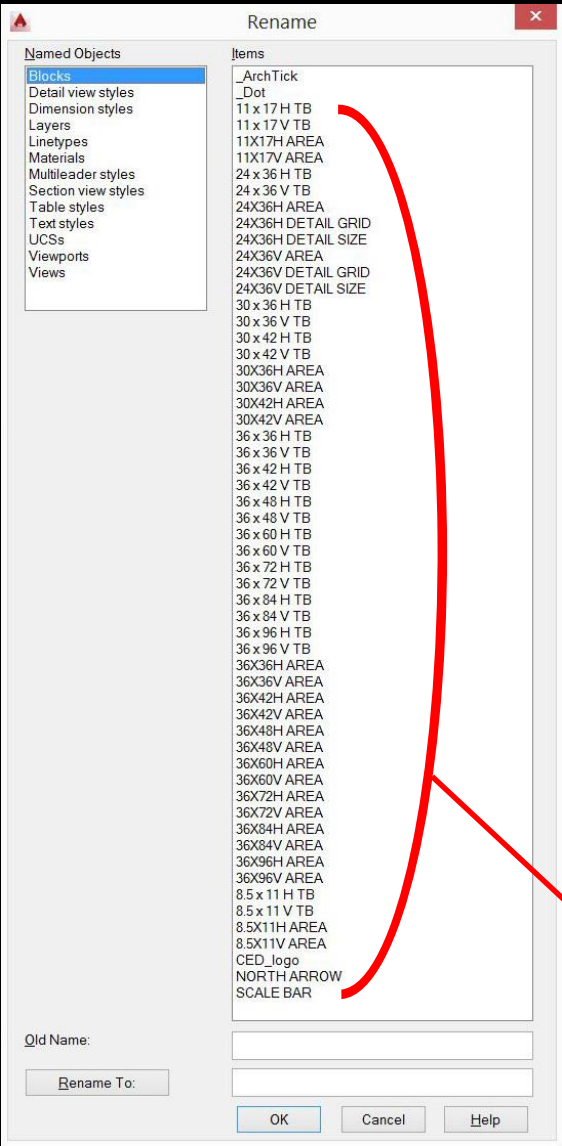
SHEET TITLE:  
SITE PLAN  
MAIN  
ENTRANCE

SHEET NUMBER:  
L-101





# Blocks



11x17 horizontally-oriented titleblock

11x17 vertically-oriented titleblock

Plot area (use to create a saved view) for 11x17 horizontally-oriented titleblock

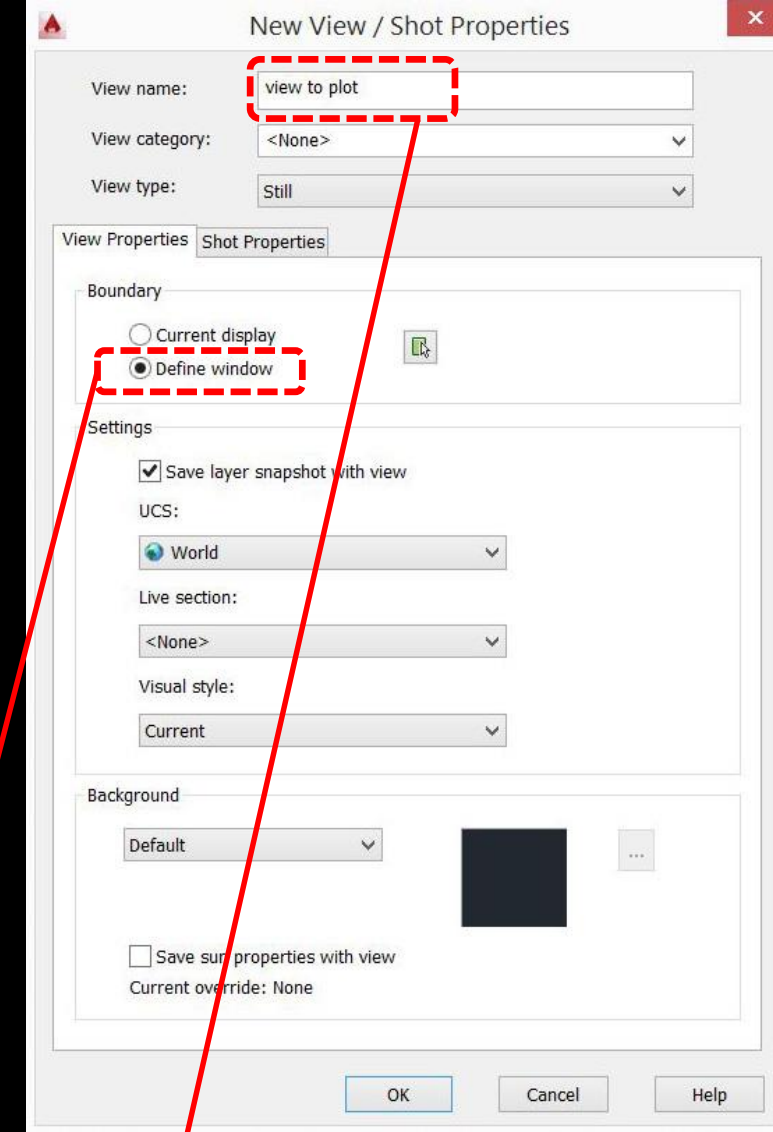
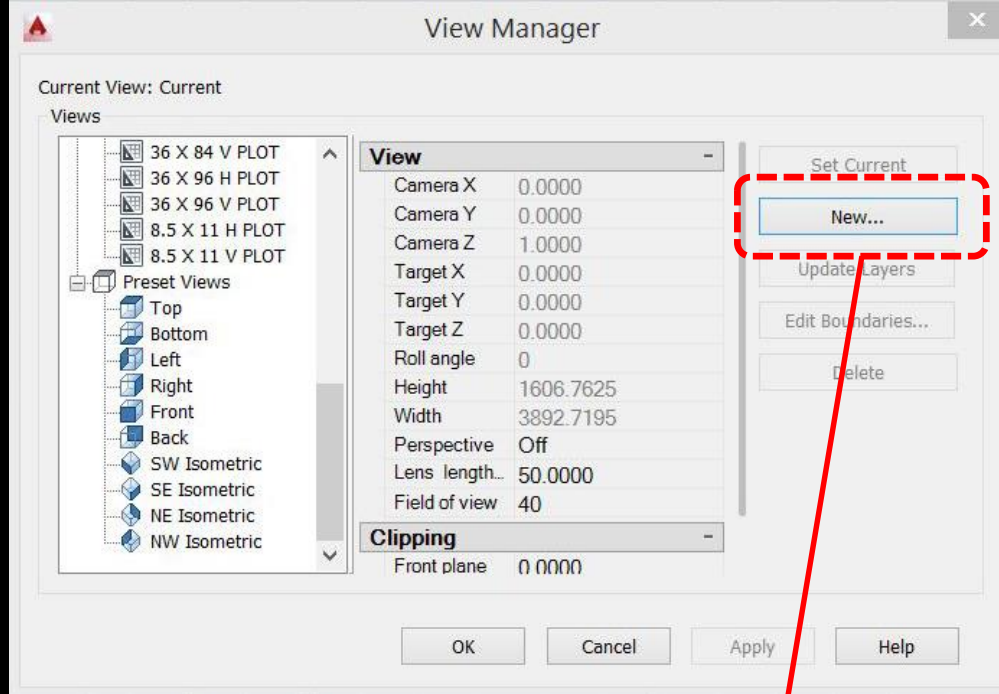
Plot area (use to create a saved view) for 11x17 vertically-oriented titleblock

Grid to aid in laying out details on a sheet

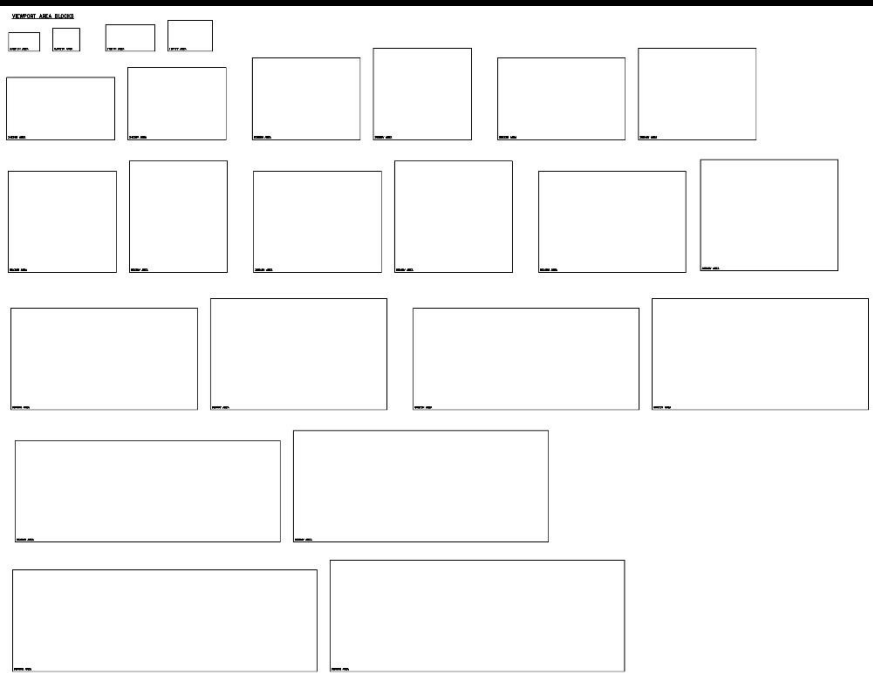
Detail size, corresponds to detail grid

Standard blocks included in CED Templates

# Viewport Sizes Plot Views



Viewport size blocks

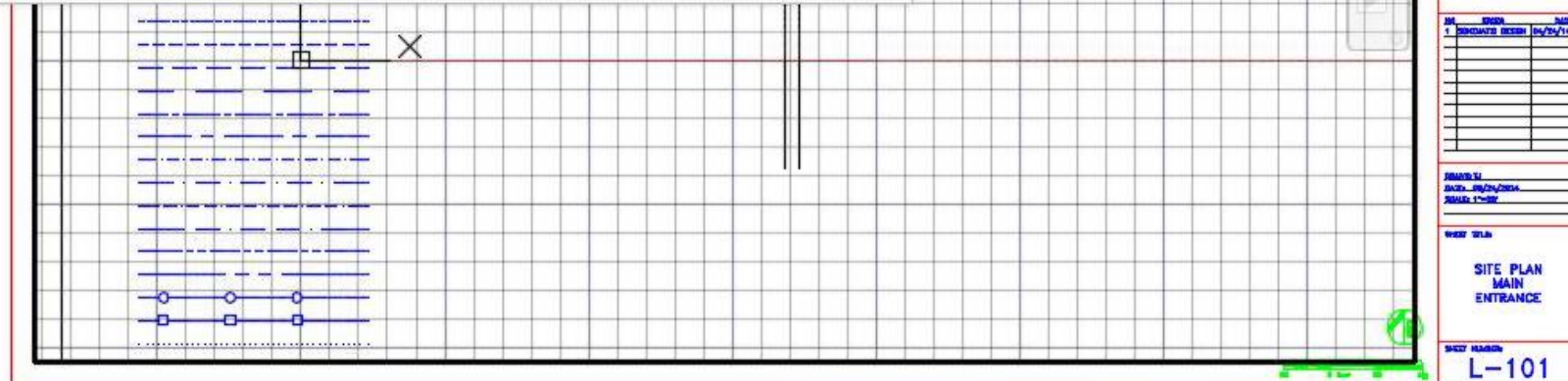


Create a new view...

...by picking a window using the  
viewport size block corners...

...and giving it a unique name that  
will be used in the page setup.

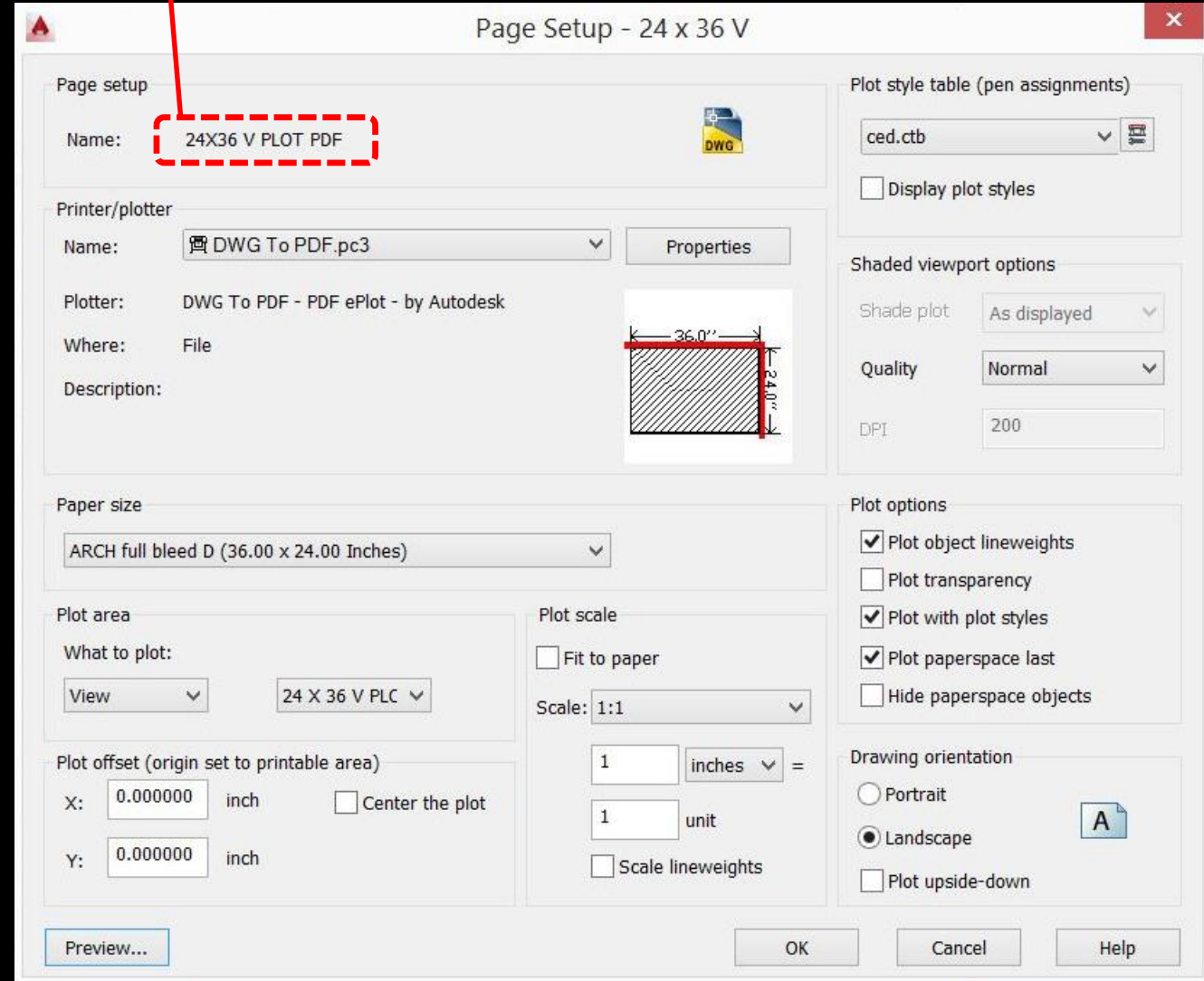
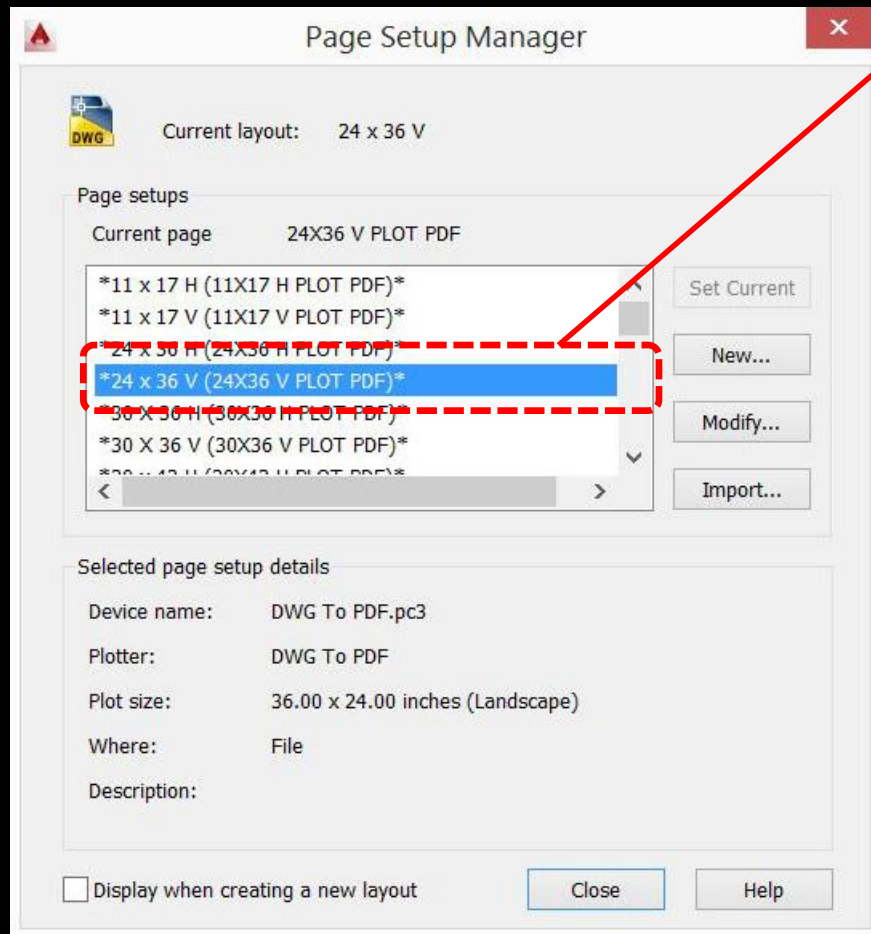
## Set view current in viewport





# Page Setups

Named page setups for all sheet sizes and titleblock orientations in template

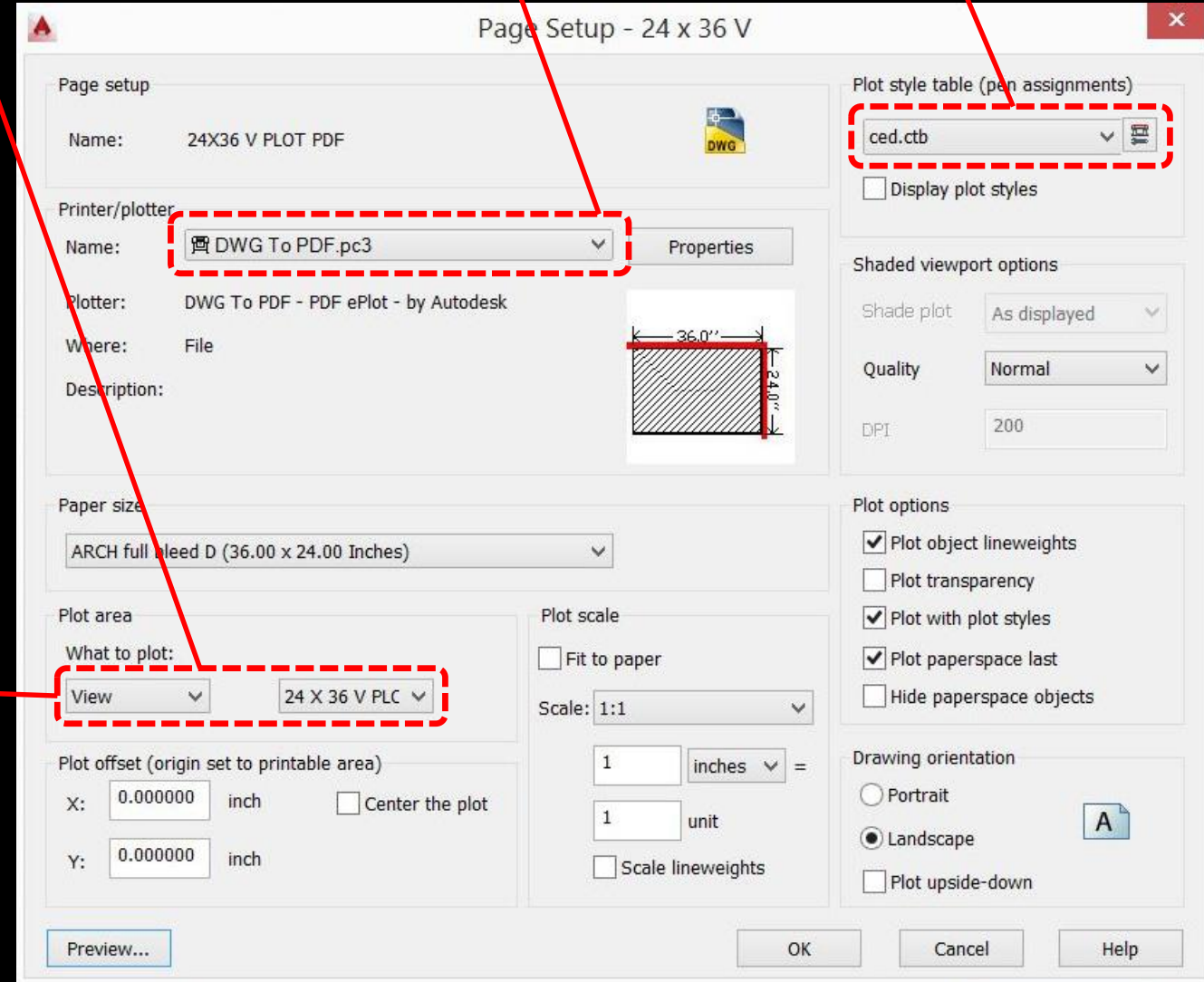
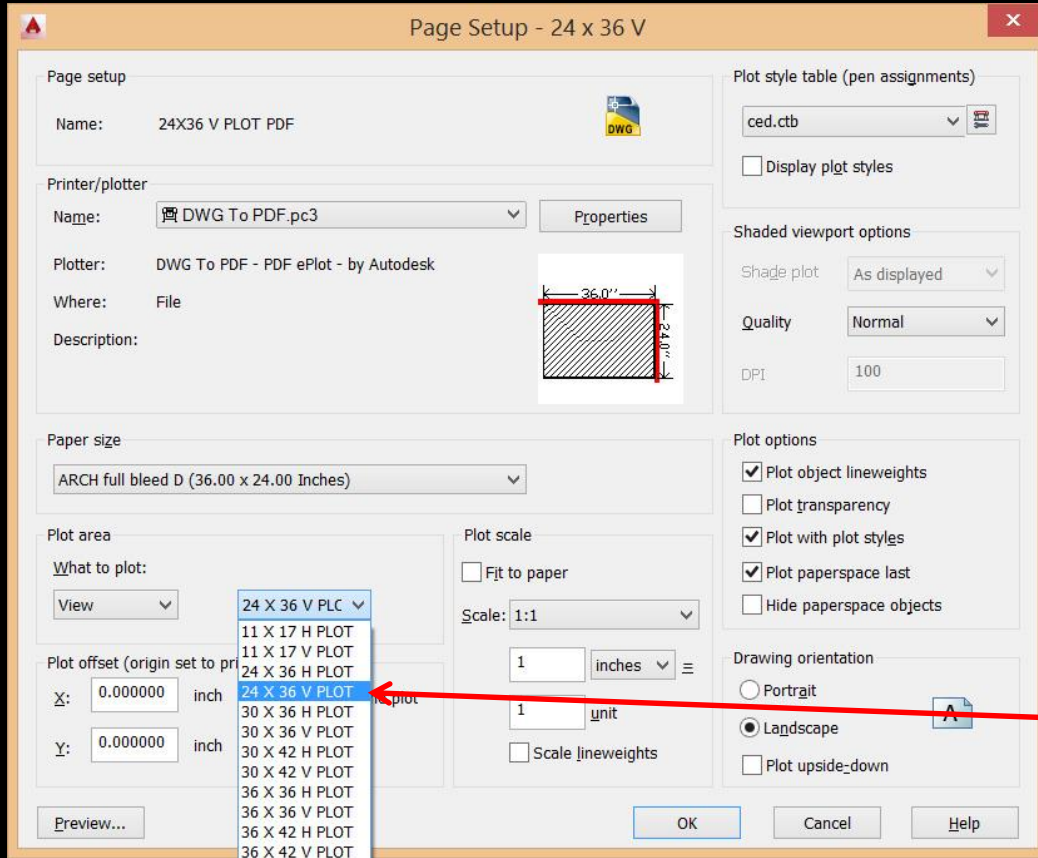


# Page Setups

Set plot area to View, use  
named view that matches  
sheet orientation

CED standard plotter  
(DWG to PDF.pmp;  
DWG to PDF.pc3)

CED standard plot  
style table  
(CED.ctb)





# CTB file







Sequence of 12 lineweights repeats...

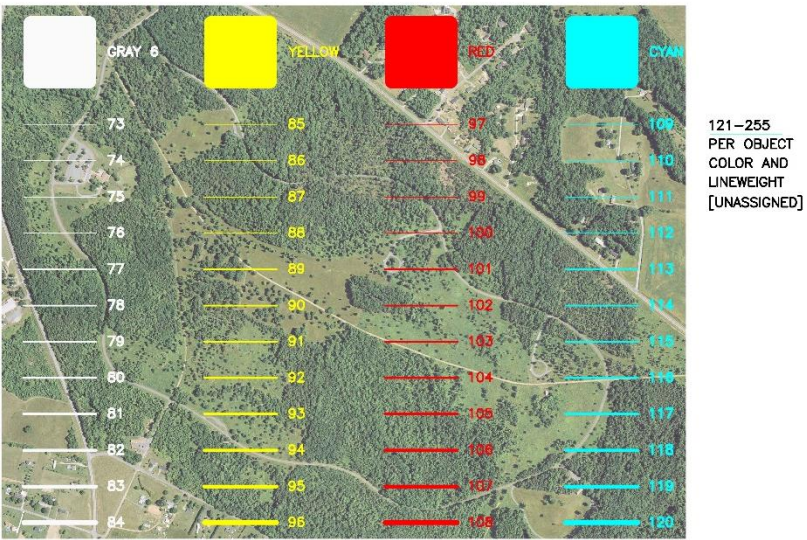
Plot Style Table Editor - ced.ctb

General Table View Form View

Name	Color 1	Color 2	Color 3	Color 4	Color 5	Color 6	Color 7	Color 8	Color 9	Color 10	Color 11	Color 12	Color 13	Color 14	Color 15
Description	Description_1	Description_2	Description_3	Description_4	Description_5	Description_6	Description_7	Description_8	Description_9	Description_10	Description_11	Description_12	Description_13	Description_14	Description_15
Color	Black	Black	Black	Black	Black	Black	Black	Black	Black	Black	Black	Black	84,84,84	84,84,84	84,84,84
Enable dithering	On	On	On	On	On	On	On	On	On	On	On	On	On	On	On
Convert to grayscale	Off	Off	Off	Off	Off	Off	Off	Off	Off	Off	Off	Off	Off	Off	Off
Use assigned pen #	Automatic	Automatic	Automatic	Automatic	Automatic	Automatic	Automatic	Automatic	Automatic	Automatic	Automatic	Automatic	Automatic	Automatic	Automatic
Virtual pen #	Automatic	Automatic	Automatic	Automatic	Automatic	Automatic	Automatic	Automatic	Automatic	Automatic	Automatic	Automatic	Automatic	Automatic	Automatic
Screening	100	100	100	100	100	100	100	100	100	100	100	100	100	100	100
Linetype	Use object linetype	Use object linetype	Use object linetype	Use object linetype	Use object linetype	Use object linetype	Use object linetype	Use object linetype	Use object linetype	Use object linetype	Use object linetype	Use object linetype	Use object linetype	Use object linetype	Use object linetype
Adaptive adjustment	Off	Off	Off	Off	Off	Off	Off	Off	Off	Off	Off	Off	Off	Off	Off
Lineweight	0.0508 mm	0.1778 mm	0.2794 mm	0.3810 mm	0.5080 mm	0.5588 mm	0.6096 mm	0.7112 mm	0.7874 mm	0.9906 mm	1.1938 mm	1.5748 mm	0.0508 mm	0.1778 mm	0.2794 mm
Line End Style	Use object end style	Use object end style	Use object end style	Use object end style	Use object end style	Use object end style	Use object end style	Use object end style	Use object end style	Use object end style	Use object end style	Use object end style	Use object end style	Use object end style	Use object end style
Line Join style	Use object join style	Use object join style	Use object join style	Use object join style	Use object join style	Use object join style	Use object join style	Use object join style	Use object join style	Use object join style	Use object join style	Use object join style	Use object join style	Use object join style	Use object join style
Fill Style	Use object fill style	Use object fill style	Use object fill style	Use object fill style	Use object fill style	Use object fill style	Use object fill style	Use object fill style	Use object fill style	Use object fill style	Use object fill style	Use object fill style	Use object fill style	Use object fill style	Use object fill style

## CED STANDARD LINEWEIGHTS AND SCREENING

	BLACK		GRAY 1		GRAY 2		GRAY 3		GRAY 4		GRAY 5
1	13	25	37	49	61						
2	14	26	38	50	62						
3	15	27	39	51	63						
4	16	28	40	52	64						
5	17	29	41	53	65						
6	18	30	42	54	66						
7	19	31	43	55	67						
8	20	32	44	56	68						
9	21	33	45	57	69						
10	22	34	46	58	70						
11	23	35	47	59	71						
12	24	36	48	60	72						

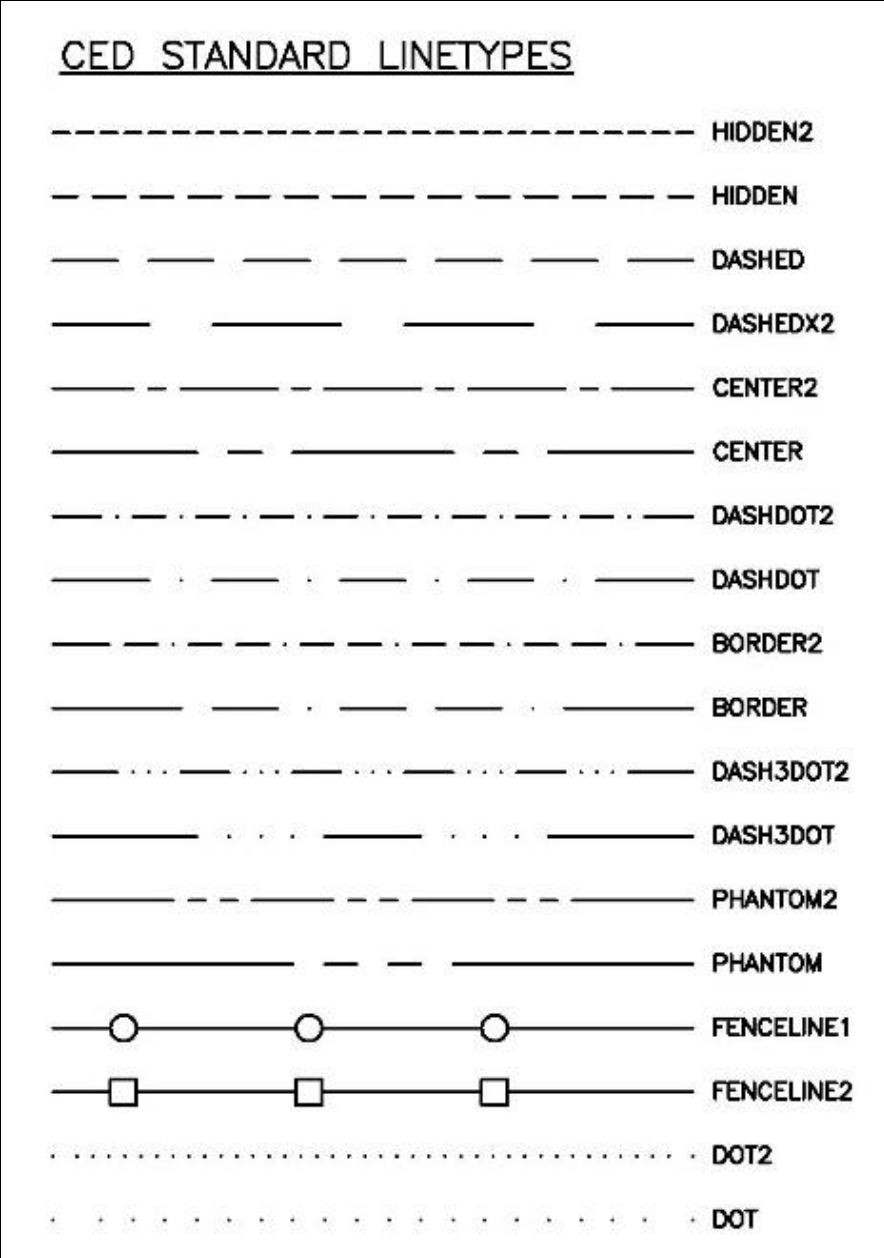
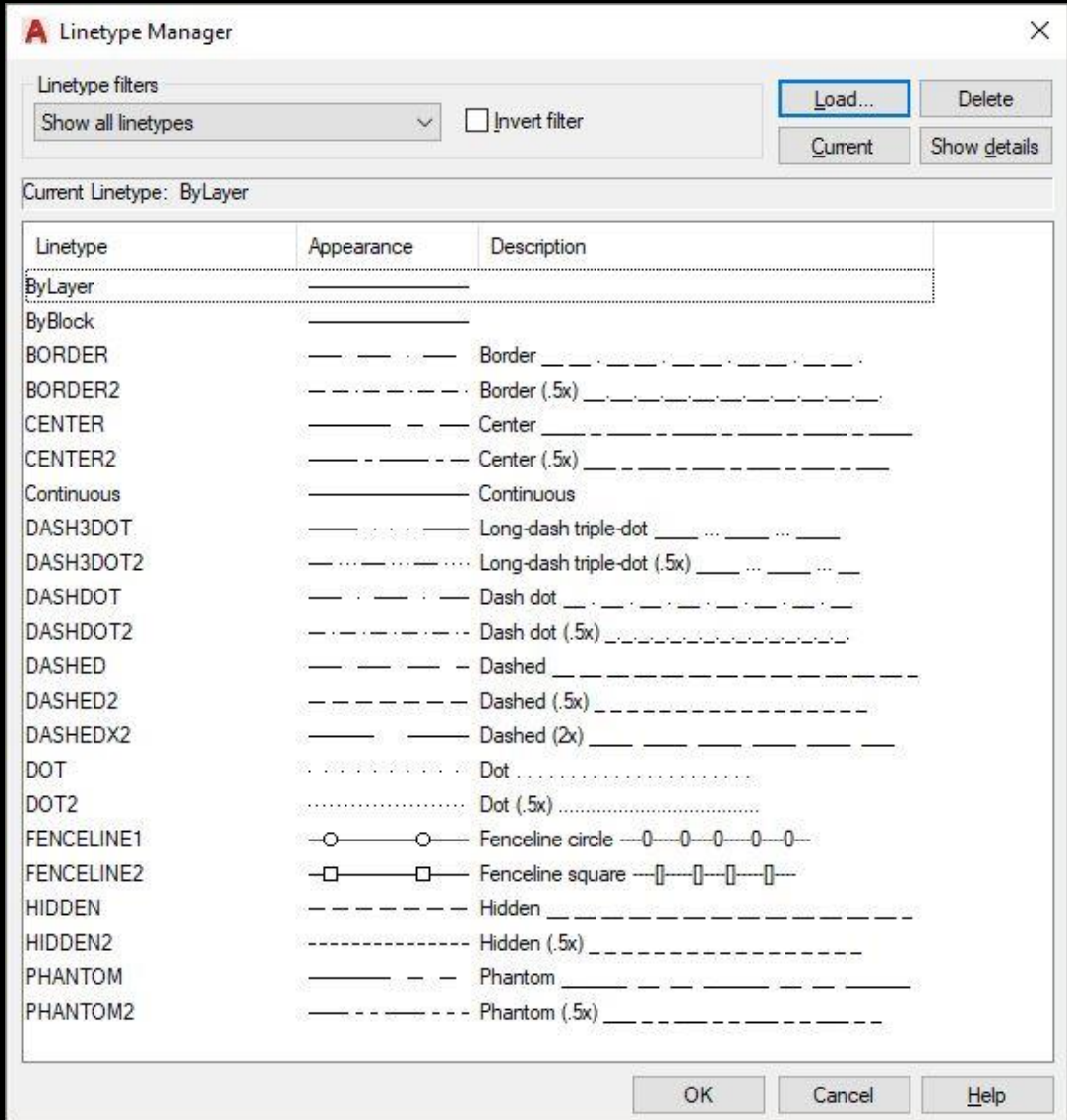


...in 100% black,  
6 incrementally  
lighter shades of  
gray, and 3 colors.

# Line types

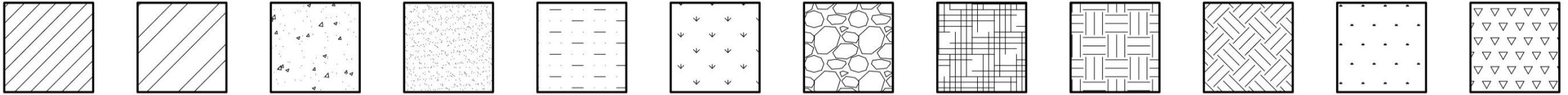
Linetypes preloaded in templates.

Use universal ltscaling.





# Hatch Patterns



Hatch patterns in templates with  
annotative scaling

Logo



Logo in templates as CAD entities

# Details

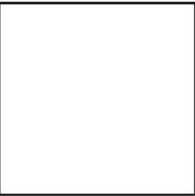
Scale up detail size template to detail scale

Use detail size template to determine extents of individual details.

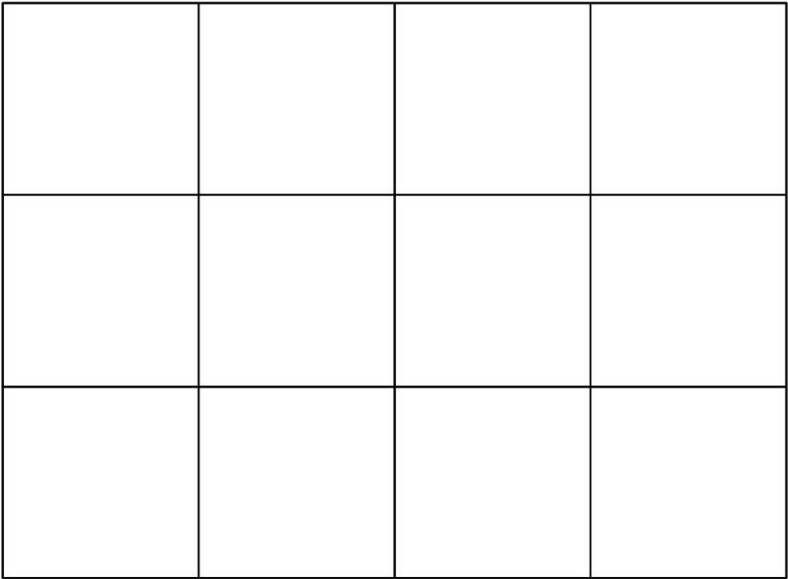
Use detail grid as an alignment tool for placing xref'ed details into a titleblock sheet.

ARCHITECTURAL SCALE FACTORS	
$\frac{1}{256}"=1'-0"$	3072
$\frac{1}{128}"=1'-0"$	1536
$\frac{1}{64}"=1'-0"$	768
$\frac{1}{32}"=1'-0"$	384
$\frac{1}{16}"=1'-0"$	192
$\frac{3}{32}"=1'-0"$	128
$\frac{1}{8}"=1'-0"$	96
$\frac{3}{16}"=1'-0"$	64
$\frac{1}{4}"=1'-0"$	48
$\frac{3}{8}"=1'-0"$	32
$\frac{1}{2}"=1'-0"$	24
$\frac{3}{4}"=1'-0"$	16
$1"=1'-0"$	12
$1\frac{1}{2}"=1'-0"$	8
$3"=1'-0"$	4
$6"=1'-0"$	2

## DETAIL AREA BLOCKS



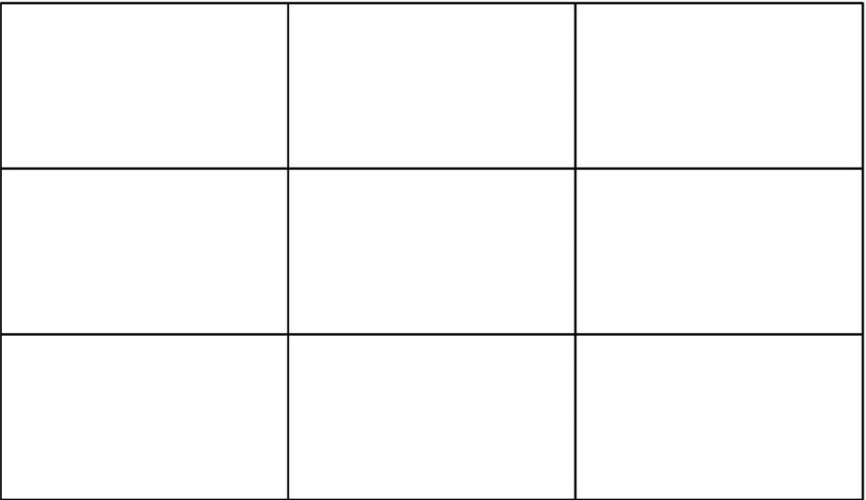
24x36 V DETAIL SIZE



24x36 V DETAIL GRID



24x36 V DETAIL SIZE



24x36 V DETAIL GRID

# Layer Names

Standard layer names created in templates

Follow naming patterns for new layers

Use an X to indicate existing information.  
For example, L-X-PLNT-TREE for existing tree information. Make layers as needed, following the patterns.

Filters		«	S...	Name	▲	O..	Fr...	L...	Color	Linetype	Lineweight	Tran...	Plot ...	P...	N...	V...	VP ...	VP Linetype	VP Lineweight	VP T...	VP Plot Style	Description
All			✓	0		!	!	!	white	Continuous	Default	0	Colo...	!	!	!	w...	Continuous	Default	0	Color_7	
All Used Layers				Defpoints		!	!	!	white	Continuous	Default	0	Colo...	!	!	!	w...	Continuous	Default	0	Color_7	
				L-ANNO-DIMS		!	!	!	white	Continuous	Default	0	Colo...	!	!	!	w...	Continuous	Default	0	Color_7	Dimensions
				L-ANNO-KEYN		!	!	!	white	Continuous	Default	0	Colo...	!	!	!	w...	Continuous	Default	0	Color_7	Key notes
				L-ANNO-LEGN		!	!	!	white	Continuous	Default	0	Colo...	!	!	!	w...	Continuous	Default	0	Color_7	Legends and schedules
				L-ANNO-NOTE		!	!	!	white	Continuous	Default	0	Colo...	!	!	!	w...	Continuous	Default	0	Color_7	Notes
				L-ANNO-NPLT		!	!	!	white	Continuous	Default	0	Colo...	!	!	!	w...	Continuous	Default	0	Color_7	Construction lines, nonplotting information
				L-ANNO-REDL		!	!	!	white	Continuous	Default	0	Colo...	!	!	!	w...	Continuous	Default	0	Color_7	Redline
				L-ANNO-REVS		!	!	!	white	Continuous	Default	0	Colo...	!	!	!	w...	Continuous	Default	0	Color_7	Revisions
				L-ANNO-SYMB		!	!	!	white	Continuous	Default	0	Colo...	!	!	!	w...	Continuous	Default	0	Color_7	Symbols
				L-ANNO-TEXT		!	!	!	white	Continuous	Default	0	Colo...	!	!	!	w...	Continuous	Default	0	Color_7	Text
				L-ANNO-TTLB		!	!	!	green	Continuous	Default	0	Colo...	!	!	!	g...	Continuous	Default	0	Color_3	Border and title block
				L-ANNO-TTLB-BORD		!	!	!	10	Continuous	Default	0	Colo...	!	!	!	10	Continuous	Default	0	Color_10	Border linework
				L-ANNO-TTLB-LOGO		!	!	!	red	Continuous	Default	0	Colo...	!	!	!	red	Continuous	Default	0	Color_1	CED logo
				L-ANNO-TTLB-TEXT		!	!	!	blue	Continuous	Default	0	Colo...	!	!	!	bl...	Continuous	Default	0	Color_5	Titleblock text
				L-ANNO-TTLB-VPRT		!	!	!	white	Continuous	Default	0	Colo...	!	!	!	w...	Continuous	Default	0	Color_7	Viewport
				L-BLDG		!	!	!	white	Continuous	Default	0	Colo...	!	!	!	w...	Continuous	Default	0	Color_7	Proposed building footprints
				L-IRRG		!	!	!	white	Continuous	Default	0	Colo...	!	!	!	w...	Continuous	Default	0	Color_7	Irrigation system
				L-IRRG-COVR		!	!	!	white	Continuous	Default	0	Colo...	!	!	!	w...	Continuous	Default	0	Color_7	Irrigation coverage
				L-IRRG-EQPT		!	!	!	white	Continuous	Default	0	Colo...	!	!	!	w...	Continuous	Default	0	Color_7	Irrigation equipment
				L-IRRG-PIPE		!	!	!	white	Continuous	Default	0	Colo...	!	!	!	w...	Continuous	Default	0	Color_7	Irrigation piping
				L-IRRG-SPKL		!	!	!	white	Continuous	Default	0	Colo...	!	!	!	w...	Continuous	Default	0	Color_7	Irrigation sprinklers
				L-LITE		!	!	!	white	Continuous	Default	0	Colo...	!	!	!	w...	Continuous	Default	0	Color_7	Lighting
				L-LITE-IDEN		!	!	!	white	Continuous	Default	0	Colo...	!	!	!	w...	Continuous	Default	0	Color_7	Luminaire identification and text
				L-LITE-SITE		!	!	!	white	Continuous	Default	0	Colo...	!	!	!	w...	Continuous	Default	0	Color_7	Site lighting (see also civil group)
				L-PLNT		!	!	!	white	Continuous	Default	0	Colo...	!	!	!	w...	Continuous	Default	0	Color_7	Plant and landscape materials
				L-PLNT-BEDS		!	!	!	white	Continuous	Default	0	Colo...	!	!	!	w...	Continuous	Default	0	Color_7	Rock, bark and other landscaping beds
				L-PLNT-GRND		!	!	!	white	Continuous	Default	0	Colo...	!	!	!	w...	Continuous	Default	0	Color_7	Ground covers and vines
				L-PLNT-PLAN		!	!	!	white	Continuous	Default	0	Colo...	!	!	!	w...	Continuous	Default	0	Color_7	Planting plants
				L-PLNT-TREE		!	!	!	white	Continuous	Default	0	Colo...	!	!	!	w...	Continuous	Default	0	Color_7	Trees
				L-PLNT-TURF		!	!	!	white	Continuous	Default	0	Colo...	!	!	!	w...	Continuous	Default	0	Color_7	Lawn areas

■ Invert filter

All: 50 layers displayed of 50 total layers



# Download

Navigate to  
[https://ced.uga.edu/tech\\_services/](https://ced.uga.edu/tech_services/)

Scroll to **DOWNLOADS** to get the version of the CAD Standard that matches your AutoCAD version

**EXTRACT** the files from the ZIP file and keep them on your machine. Some will need to be copied to various locations (see next slides) and some are supporting material, such as this presentation.

**College of Environment + Design**  
**UNIVERSITY OF GEORGIA**

ABOUT DEGREES STUDENT LIFE PUBLIC SERVICE + OUTREACH DIRECTORY ALUMNI GIVING NEWS + EVENTS FOUNDERS GARDEN

## CED TECHNOLOGY SERVICES

**Summer Hours**  
Office: 8 a.m. - 4 p.m. weekdays  
Print Shop: 9 a.m. - 4 p.m. weekdays

OFFICE	PRINT SHOP
31 Jackson Street Building (706) 542-4463	22 Jackson Street Building (706) 542-4463

### KNOWLEDGEBASE

GENERAL	POLICIES	HARDWARE
SOFTWARE	GIS RELATED	PRINTING, PLOTTING, SCANNING
FABRICATION	NETWORK	PORTFOLIO DEVELOPMENT

### SERVICE REQUESTS

**CLICK HERE** for a full catalog of service requests (requires a UGA MyID) or you can email [cedhelp@uga.edu](mailto:cedhelp@uga.edu) for assistance.

Service requests are used for things such as...

- Building and computer access
- Master Calendar additions
- Website and social media updates
- Qualtrics account setup
- Zoom video conferencing requests

### DOWNLOADS

- Tech Services Overview
- CED CAD Standard files for AutoCAD versions 2014 through 2017
- CED CAD Standard files for AutoCAD version 2018

### NEWS

- MHP Graduate Scott Messer Featured in UGA Graduate Magazine
- BLA Service Learning Studio Featured in UGAToday
- FindIt Program Featured in UGAToday
- Having a Wonderful Time...Wish You Were Here!
- CED Team Continues Work With Landscape Architecture Foundation's Case Study Investigation Program
- Maymester Students Create New Master Plan for UGACR
- Last-minute Panic! BLA Senior Capstone projects now in the Circle Gallery
- Sigma Pi Kappa Initiation 2018
- ASLA Student Competition awards 2018
- Sink or Swim? This year's Shark Tank competition at CED

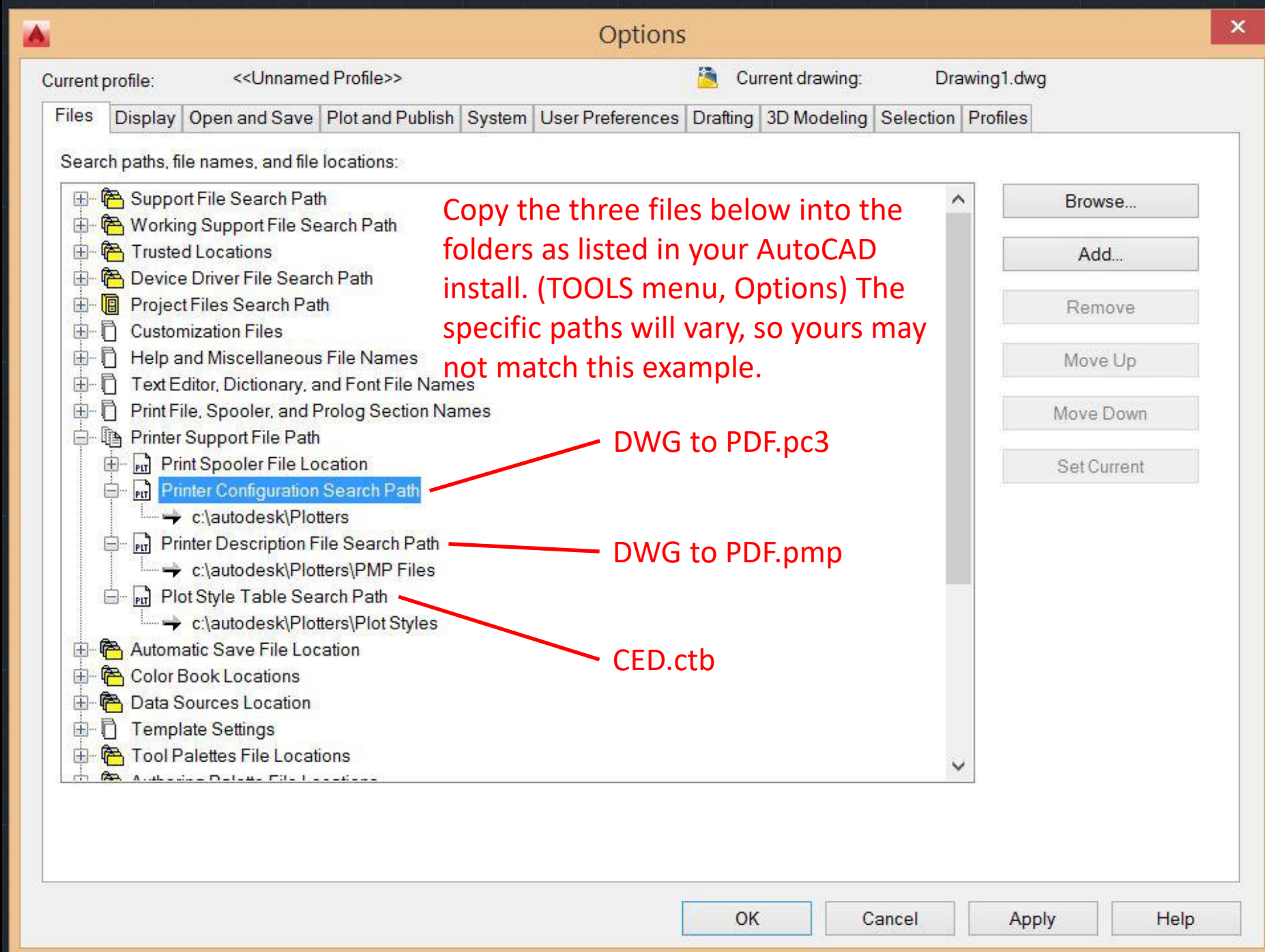
**YOUR PATH SO FAR**  
College of Environment + Design / Technology Services

# File Locations

## Option A

Three files need to be placed in specific locations on your computer.

Navigate to the folders listed here to copy these files into place  
— OR —  
use the built-in MANAGE PLOTTERS and MANAGE PLOT STYLES features (see next slide) to navigate to these locations.

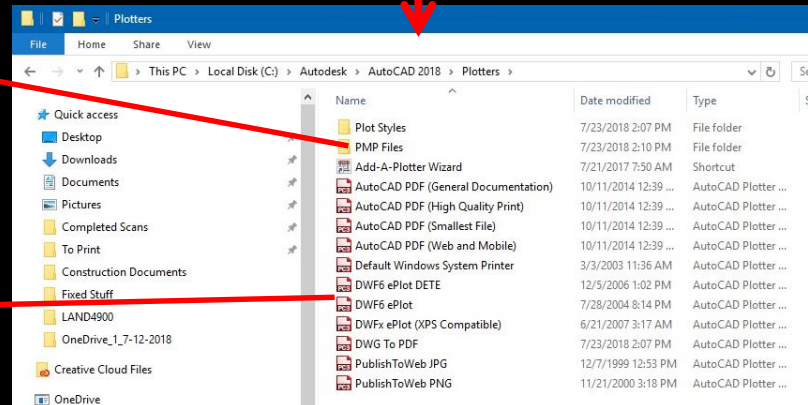
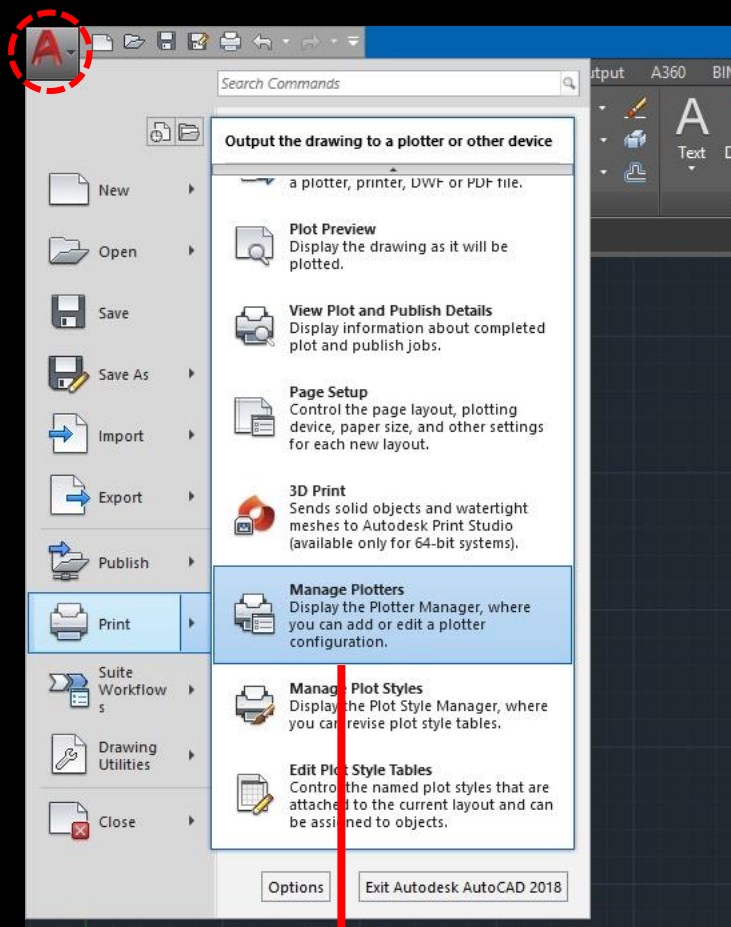


# File Locations

## Option B

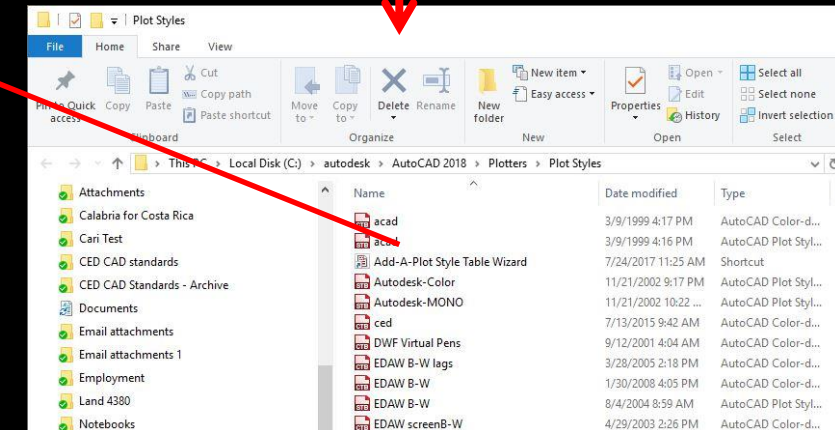
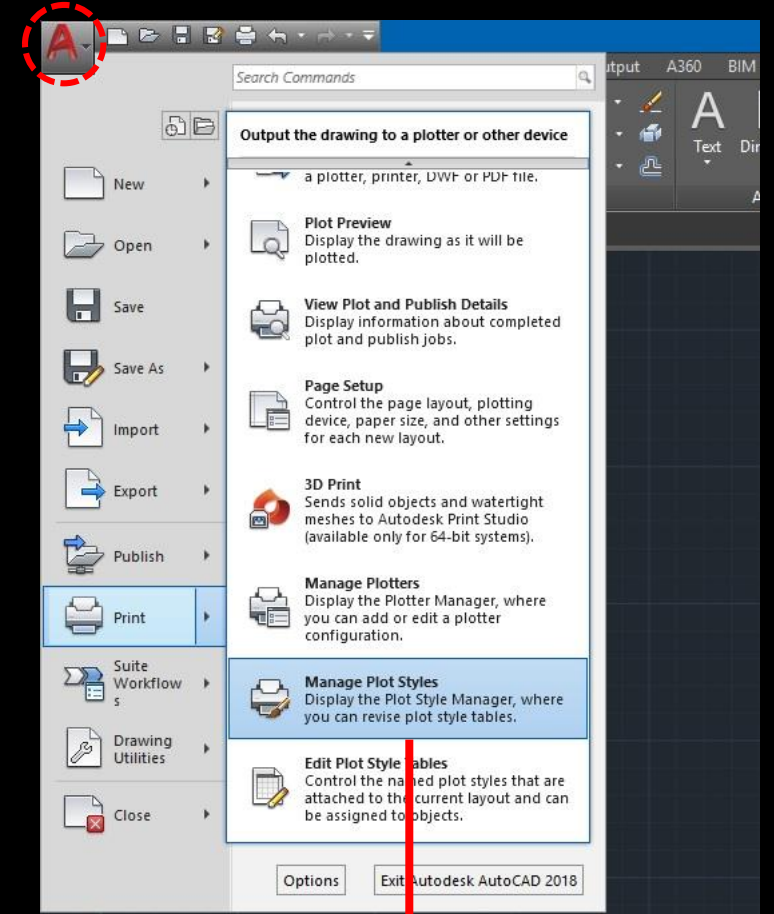
Three files need to be placed in specific locations on your computer.

Launch MANAGE PLOTTERS and MANAGE PLOT STYLES from AutoCAD to navigate to these locations.



DWG to PDF.pmp placed in PMP Files folder

DWG to PDF.pc3 placed in Plotters folder



CED.ctb placed in Plot Styles folder



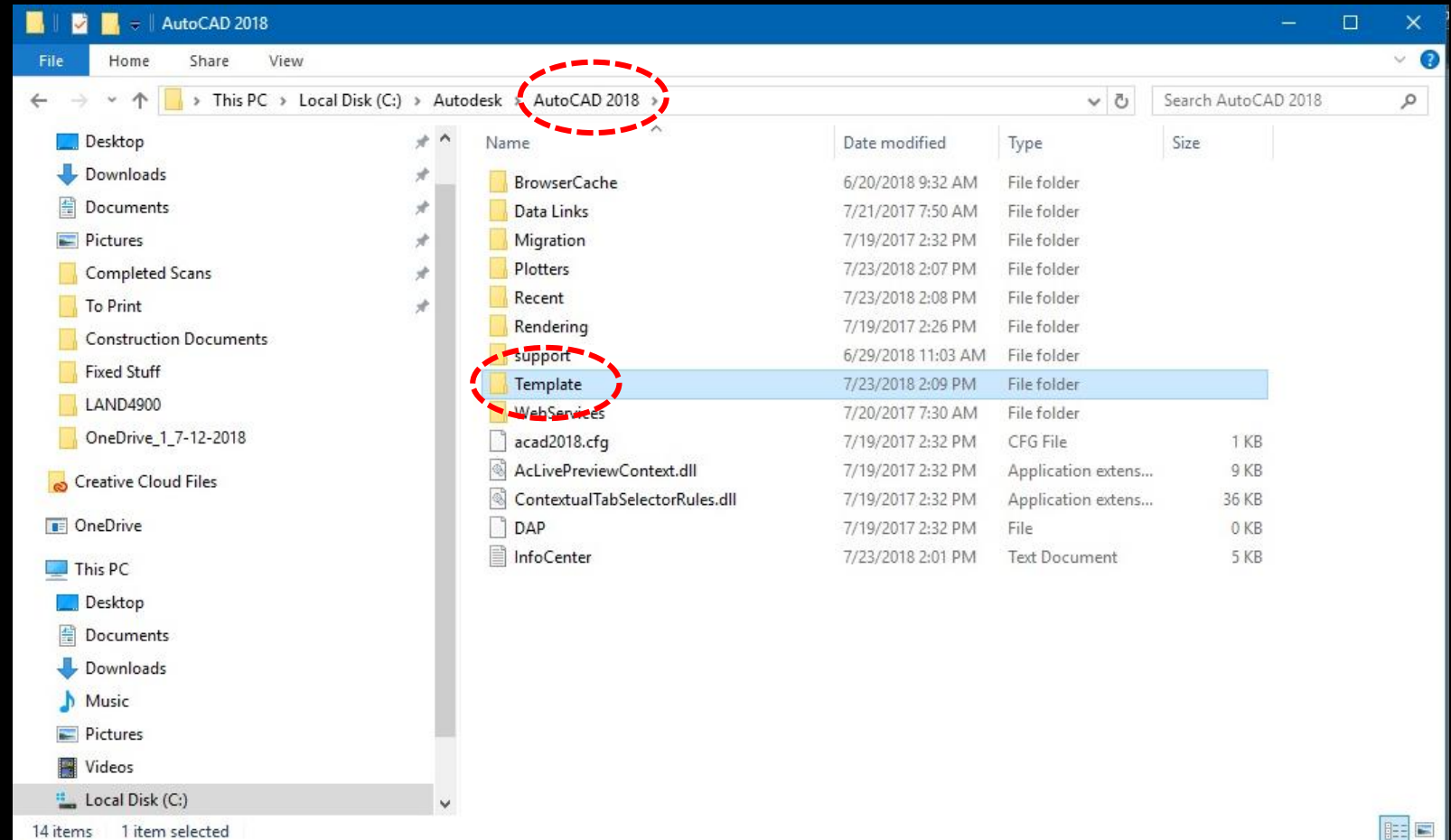
# File Locations

## AutoCAD Templates

The template files (.dwt) can be copied into place, allowing you to create new files with all the standard components.

From either the PLOT STYLES or PLOTTERS windows you opened in the previous step, navigate up one level to the AutoCAD folder (in this case AutoCAD 2018), then to the TEMPLATE folder.

Copy the three template files (CED TEMPLATE ARCHITECTURAL.dwt, CED TEMPLATE DECIMAL.dwt, and CED TEMPLATE DECIMAL\_METRIC.dwt) into the TEMPLATE folder.



Note that template in this case denotes an AutoCAD file saved with a .dwt extension. These function differently than files saved as a standard .dwg, such as those seen on the second slide of this presentation.