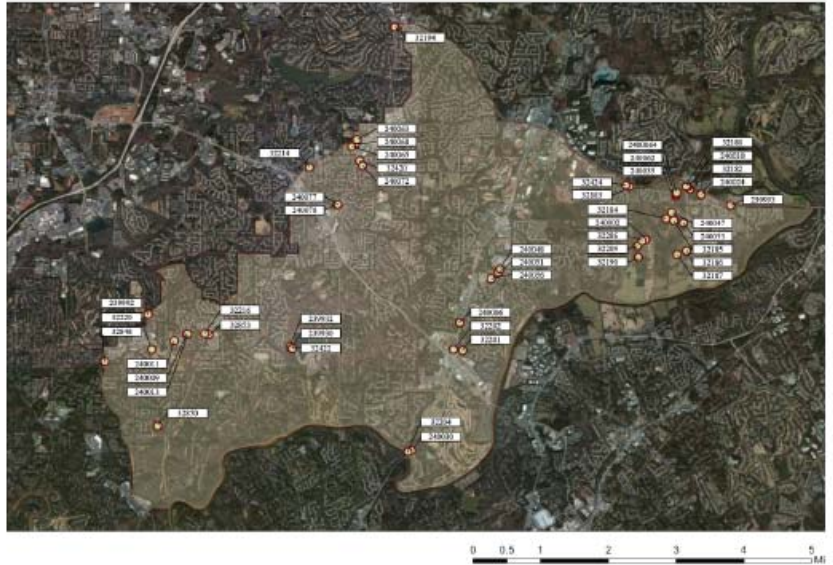


City of Johns Creek, Georgia

Pratt Cassity – Principal Investigator | Laura Kviklys – Project Coordinator

Summary

The Center for Community Design and Preservation (CCDP) located within the University of Georgia's College of Environment + Design (CED) conducted a preliminary historic resources survey of Johns Creek, Georgia in July 2012. The project area covered the 32 square miles within the city limits, which is located in North Fulton County. The city is roughly bordered by Highway 120 and Jones Bridge to the west, McGinnis Ferry Road to the north and northeast, Nesbit Ferry Road to the southwest and the Chattahoochee River delineates the southern border. The resources survey was performed by historic preservation professionals and graduate students in the Historic Preservation program (MHP) and the Masters of Landscape Architecture program (MLA) at the CED. The survey consisted of background research, with particularly heavy focus on the 1996 Georgia Historic resources Survey of unincorporated North Fulton County, windshield and pedestrian field work, and data collection and analysis.



Findings

The 1996 North Fulton County Historic resources Survey identified 249 sites with a construction date ranging from the 1800s to 1950. The survey area covered all of North Fulton County with many identified resources located outside boundaries of the City of Johns Creek. A total of forty eight (48) resources are currently extant within the boundaries of Johns Creek that maintain a minimum level of age, integrity and significance. The construction date of all resources ranged from the early 1800s to the late 1960s. Most resources date from the post- World War II era, 1940-1969, with a total of 21 resources (43.8%) constructed during this period.

The variance in building type and architectural styles exhibited throughout Johns Creek is typical for formerly rural communities. The majority of identified resources are single family homes (40%), with the most frequent house type being the Ranch House (37%).