



Historic Resources Survey Report

Crawford County, Georgia

July 2014

The University of Georgia
College of Environment and Design
Center for Community Design & Preservation



Credits

Submitted to:

Georgia Transmission Corporation
2100 East Exchange Place
Tucker, Georgia, 30084-5342

Prepared by:

Center for Community Design and Preservation at the University of Georgia
225 West Broad Street
Athens, Georgia, 30062
<http://www.ced.uga.edu/pso>

Principal Investigator:

Pratt Cassity

Project Coordinator:

Laura Kviklys

Maggie Discher

Masters of Historic Preservation Candidate — Field Work

Rachel Haddon

Masters of Historic Preservation Candidate — Field Work

Sarah Moses

M.Arch/MSHP — Report Layout and Design

Contents

Introduction	5
Project Description	6
Methodology	8
Criteria for Evaluation	9
Developmental History of Crawford County	10
Survey Results	12
Architectural Analysis and Integrity	16
Conclusion	18
Resource Templates	20
Bibliography	168
Appendix A. Residential Housing Types in Georgia	169
Appendix B. Architectural Styles in Georgia	174

Illustrations

List of Tables

- Table 1. All Identified Resources
- Table 2. Resource Types
- Table 3. Current Resource Use
- Table 4. Date of Construction
- Table 5. Building Types
- Table 6. Architectural Styles

List of Figures

- Figure 1. Survey Area of Crawford County
- Figure 2. Location of Identified Resources in Crawford County

Field ID	Resource ID	X	Y	Description	NRHP Eligibility
CD-1	245758	32.56342	-83.96862	Mt. Zion Cemetery	May Meet Criteria
CD-2	245759	32.66004	-83.92325	Central hallway	May Meet Criteria
CD-3	245760	32.62388	-83.89761	Gabled ell cottage	May Meet Criteria
CD-4	245761	32.59944	-83.91161	Georgian cottage	May Meet Criteria
CD-5	245762	32.6145	-83.93874	Cool Springs Church	Does Not Meet Criteria
CD-6	245763	32.61734	-83.92113	New South Cottage	May Meet Criteria
CD-7	245764	32.6546	-83.87728	Queen Anne cottage	May Meet Criteria
CD-8	245765	32.65222	-83.90867	Little Union Primitive Baptist	Does Not Meet Criteria
CD-9	245766	32.63797	-83.9276	Union Church Road	May Meet Criteria
CD-10	245767	32.63344	-83.94851	Gordon Chapel Cemetery	Does Not Meet Criteria
CD-11	245768	32.59185	-83.93394	Central hallway	May Meet Criteria
CD-12	245769	32.5992	-83.95973	Georgian cottage	May Meet Criteria
CD-13	245770	32.56781	-83.94585	Active use Cemetery	Does Not Meet Criteria
CD-14	245771	32.58378	-83.98695	Active use Cemetery	Does Not Meet Criteria
CD-15	245772	32.59512	-83.98993	Unmanned cemetery	Does Not Meet Criteria
CD-16	245773	32.60125	-83.98262	Active use Cemetery	Does Not Meet Criteria
CD-17	245774	32.61086	-83.97597	Saddlebag	May Meet Criteria
CD-18	245775	32.61073	-83.97475	New South Cottage	May Meet Criteria
CD-19	245797	32.61274	-83.96958	Saddlebag	May Meet Criteria
CD-20	245776	32.6171111	-83.9678	Harris Chapel Cemetery	Does Not Meet Criteria
CD-21	245777	32.61155	-83.98546	Benevolence Church Cemetery	Does Not Meet Criteria
CD-22	245778	32.56141	-84.12524	Georgian house	Appears to meet CriteriaNR criteria
CD-23	245779	32.75604	-84.14079	Gabled ell cottage	May Meet Criteria
CD-24	245780	32.75917	-84.13002	Bethel Church and Cemetery	Does Not Meet Criteria
CD-25	245781	32.7278	-84.182	Olive Grove Church and Cemetery	May Meet Criteria
CD-26	245782	32.72446	-84.1694	Elam Cemetery	May Meet Criteria
CD-27	245783	32.73082	-84.15223	Gabled ell cottage	May Meet Criteria
CD-28	245784	32.7357	-84.11684	Saddlebag	May Meet Criteria
CD-29	245785	32.73581	-84.11227	Georgian cottage	May Meet Criteria
CD-30	245786	32.72549	-84.03765	Providence Cemetery	Does Not Meet Criteria
CD-31	245787	32.72475	-84.0585	Bungalow	Appears to Meet CriteriaNR criteria
CD-32	245788	32.71514	-84.0744	Bungalow	Appears to Meet CriteriaNR criteria
CD-33	245789	32.70893	-84.07113	Shiloh Cemetery	Does Not Meet Criteria
CD-34	245790	32.73155	-84.12212	Hollis Road Cemetery	Does Not Meet Criteria
CD-35	245791	32.6802	-84.0872	Mt. Carmel Church and Cemetery	Does Not Meet Criteria
CD-36	245792	32.6663	-84.09584	Benjamin Hawkins Grave	May Meet Criteria
CD-37	245793	32.71257	-84.04594	Wilson Cemetery	May Meet Criteria
CD-38	245794	32.7296	-84.06173	Double pen	May Meet Criteria
CD-39	245795	32.66238	-84.04585	Bethel Independent Church and Cemetery	Does Not Meet Criteria
CD-40	245796	32.64537	-84.06059	Bungalow	May Meet Criteria
CD-41	245797	32.65722	-84.006	Pleasant Hill Church and Cemetery	Does Not Meet Criteria
CD-42	245798	32.74773	-84.07674	Kendrick Family Cemetery	Does Not Meet Criteria
CD-43	245799	32.7359	-84.1213	Mt. Carmel Cemetery	Does Not Meet Criteria

Resource Type	Count	Percentage
Building	104	70%
Site	44	30%

Resource Use	Count	Percent
Agriculture/ Food Processing	1	0.7%
Church Religious Structure	2	1.4%
Commercial- Business	3	2.0%
Commercial- Office	3	2.0%
Commercial- Restaurant	2	1.4%
Commercial- Retail	6	4.1%
Entertainment- Museum	1	0.7%
Funery- Cemetery	48	32.4%
General Store	1	0.7%
Government- Courthouse	1	0.7%
Residential- Single Family Dw	65	43.9%
Residential- Multifamily Housi	1	0.7%
Vacant	13	8.8%
Work in Progress	1	0.7%

Date of Construction	Count	Percent
1800-1839	3	2.0%
1840-1849	6	4.1%
1850-1859	5	3.4%
1860-1869	5	3.4%
1870-1879	3	2.0%
1880-1889	3	2.0%
1890-1899	11	7.4%
1900-1909	23	15.5%
1910-1919	36	24.3%
1920-1929	29	19.6%
1930-1939	15	10.1%
1940-1949	5	3.4%
1950-1959	1	0.7%
1960-1969	2	1.4%
1970-1974	1	0.7%

Building Type	Count	Percentage
Agricultural Building	1	1.0%
American Small House	1	1.0%
Bungalow	26	25.0%
Central Hallway	5	4.8%
Central Tower Church	1	1.0%
Commercial Block	13	12.5%
Courthouse	1	1.0%
Double Pen	1	1.0%
Front Gable Church	1	1.0%
Gabled ell cottage	11	10.6%
Government Cottage	17	16.3%
Georgian House	3	2.9%
Jail	1	1.0%
Multiple Retail	1	1.0%
New South Cottage	4	3.8%
No Academic Type	1	1.0%
Queen Anne Cottage	4	3.8%
Queen Anne House	2	1.9%
Saddlebag	7	6.7%
Single Pen	1	1.0%
Unknown	2	1.9%

Architectural Style	Count	Percentage
Colonial Revival	2	1.4%
Craftsman	26	17.6%
Folk Victorian	19	12.8%
Gothic Revival	1	0.7%
Greek Revival	2	1.4%
Modern	1	0.7%
No Academic Style	96	64.9%
Stripped Classicism	1	0.7%

Introduction

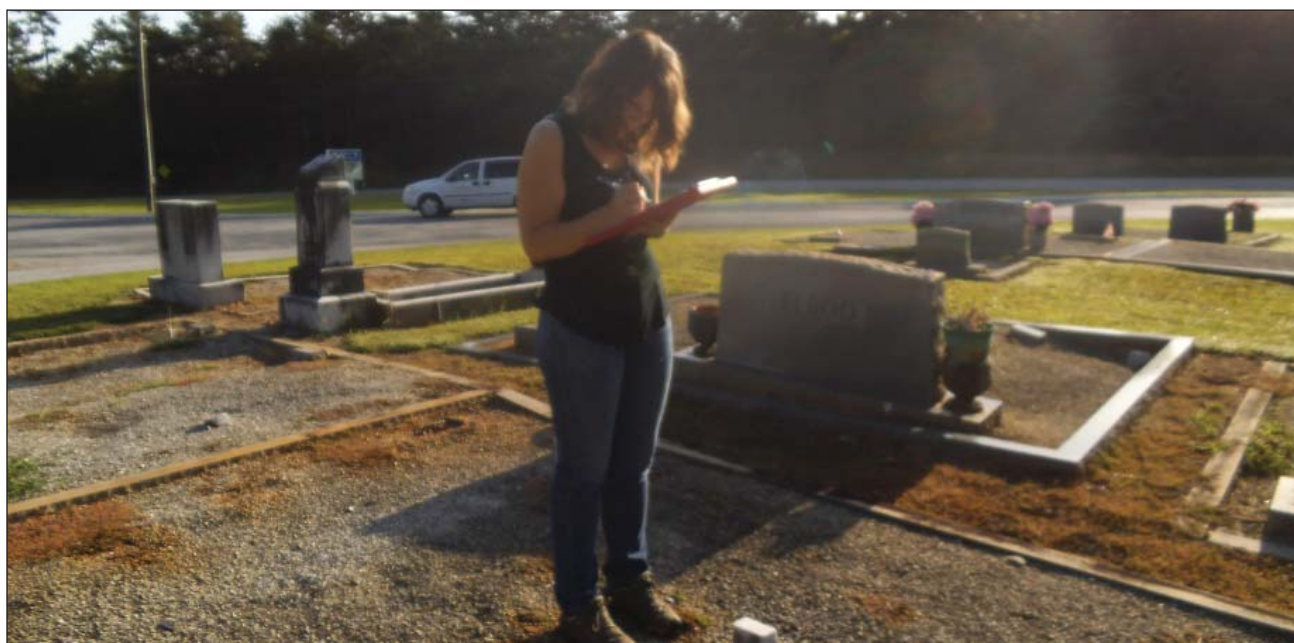
What Is a Cultural Resource Survey?

The Georgia Historic Resources Survey is an ongoing, statewide survey of buildings, sites, structures, and objects of historical, architectural, and cultural significance. The Georgia Survey is one of the programs administered by the Historic Preservation Division of the Department of Natural Resources (HPD).

Completed surveys can be used to identify individual buildings and districts for possible listing in the Georgia Register of Historic Places; assist the preservation efforts of Georgia's Certified Local Governments; support local designations of buildings and districts; expedite environmental review by governmental agencies; aid preservation

and land-use planning; and promote research of the state's history and architecture. Through the public's participation, encouraged by the HPD, surveys can increase awareness of a community's historic resources.

A goal of historic resource survey is to collect a minimum level of information needed statewide for preservation activities. This basic, standard survey does not gather all the kinds of information needed in local preservation planning, environmental review, National Register nominations, or historical research, but serves as a foundation for these preservation activities.



Project Description

The Center for Community Design and Preservation (CCDP) located within the University of Georgia's College of Environment and Design (CED) conducted a Phase I Historic Resource Survey of Crawford County, Georgia in July 2014. The project area covered 325 square miles in the unincorporated portions of the county. Crawford County is located in agrarian Middle Georgia and is bordered by Upson and Monroe Counties to the north, Bibb and Peach Counties to the east and south, and Macon and Taylor Counties to the south and west.

The resource survey was performed by graduate students in the Historic Preservation program (MHP) and the Masters of Landscape Architecture program (MLA) at the CED. The

survey consisted of historical and archival research of the project area, windshield and pedestrian field work, and data collection and analysis.

The information collected by the field survey was entered into Georgia's Natural, Archaeological, and Historic Resources Geographical Information System, (GNARHGIS), a web-based geographical information system designed to store and display information about Georgia's cultural resources. GNARHGIS is the repository for all of the current statewide historic resources survey data. The survey information was entered under survey ID 2247, "FindIt Crawford County," and can be accessed at:

<https://www.gnahrgis.org/gnahrgis/index.do>

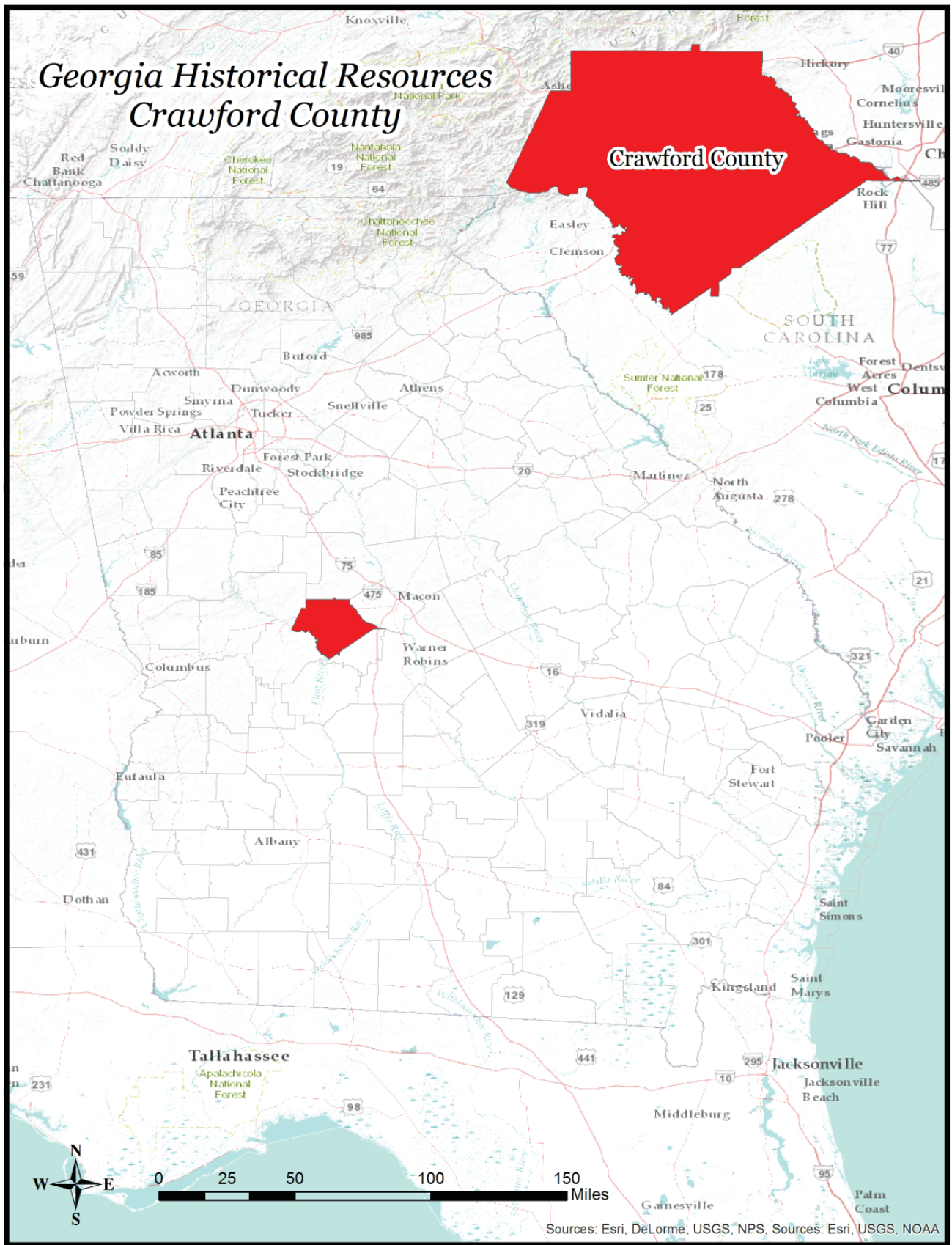


Figure 1. Project Survey Area of Crawford County

Methodology

The survey was conducted according to the procedures outlined in The Georgia Historic Resources Survey Manual. The surveyors used a combination of USGS base maps and GIS data to identify potentially historic parcels and structures.

Background research was conducted to identify previously recorded architectural resources within the proposed project study area. Primary and secondary research was conducted at the University of Georgia College of Environment and Design and the Crawford County Tax Assessors online records to determine if architectural resources, eligible, nominated, or listed on the NRHP, had been previously identified in the vicinity of the project survey area. Examination of resources listed in the Georgia Natural Archaeologic Historic Geographic Information System (GNAHRGIS) took place in order to identify any previously surveyed resources within the system.

The area was surveyed over the course of several days with systematic coverage of the project area. Each assigned resource (within the assigned boundaries) was assessed for historic significance, and architectural integrity. A Georgia Historic Resources survey form was completed for buildings having a minimum level of architectural integrity. A structure with architectural integrity

is one that generally retains its original location, design, setting, materials, workmanship, feeling and association. Properties with a significant loss of physical integrity, or those lacking historic significance were not surveyed. The physical condition of structures was not a consideration for identification for resources which retained architectural integrity.

All identified resources were approximately 50 years old or older. All properties surveyed were assigned an identification number then documented with the completion of a Georgia Historic Resource Survey Form, as well as photo documentation and corresponding georeferencing data. The survey form includes information about the use, style, floor plan, materials, context, physical description and an accurate determination of the date of construction and additions.

Sources utilized for age determination and architectural style and type description included Lee and Virginia McAlester's *A Field Guide to American Houses*, the Georgia Historic Resources Survey Manual, *Georgia's Living Places* and *A Visual Guide to Architecture* by Francis D. K. Ching. All dates of construction are presented in nine year increments unless explicitly identified by markers or other documentation.

Sources, "Criteria for Evaluation"

¹The Criteria for Evaluation are found in the Code of Federal Regulations, Title 36, Part 60, reprinted in U.S. Department of Interior, National Park Service, National Register Bulletin: How to Apply the National Register Criteria for Evaluation, Washington, D.C., 1997, p. 2-3.

²A complete list of areas of significance can be accessed at http://www.nps.gov/nr/publications/bulletins/nrb15/nrb15_5.htm

Criteria for Evaluation

National Register for Historic Places

Each resource was evaluated for potential listing in the National Register of Historic Places (NRHP); resources already listed in the Register have been noted. The criteria for listing are outlined in the National Register Bulletin How to Apply the National Register Criteria for Evaluation published by the U.S Department of Interior, National Park Service. Cultural resources can be defined as eligible for the NRHP if they:

- A. Are associated with events that have had a significant contribution to a broad pattern of history;
 - B. Are associated with the lives of persons significant in the past;
 - C. Embody distinctive characteristics of a type, period, or method of construction, or represent the work of a master, possess high artistic values, or represent a significant and distinguished entity whose components may lack distinction; or
 - D. Have yielded or may be likely to yield, information important to history or prehistory.¹
- a. A religious property deriving primary significance from architectural or artistic distinction or historical importance;
 - b. A building or structure removed from its original location but which is significant primarily for architectural value, or which is the surviving structure most importantly associated with a historic person or event;
 - c. A birthplace or grave of a historical figure of outstanding importance if there is no appropriate site or building directly associated with his or her productive life;
 - d. A cemetery which derives its primary significance from graves or persons of transcendent importance, from age, from distinctive design features, or from association with historic events;
 - e. A reconstructed building when accurately executed in a suitable environment and presented in a dignified manner as part of a restoration master plan, and when no other building or structure with the same association has survived; or
 - f. A property achieving significance within the last 50 years if it is of exceptional importance.

Ordinarily cemeteries, birthplaces, or graves of historical figures, properties owned by religious institutions or used for religious purposes, structures that have been moved from their original locations, reconstructed historic buildings, properties primarily commemorative in nature, and properties that have achieved significance within the last 50 years are not considered for the National Register. However, properties will qualify if they are integral parts of districts that do meet the criteria or they fall within the following categories:

For a property to qualify for the National Register it must meet one of the National Register Criteria for Evaluation by being associated with an important historical context and retaining historic integrity of those features to convey its significance. To determine whether a property or site retains integrity, it needs to be evaluated for the aspects of its location, design, setting, workmanship, materials, feeling, and association to convey its historic significance.²

Developmental History

Prior to 1822, the area currently known as Crawford County was inhabited primarily by the Muskogee people, known to Europeans as the Creek Indians. The first non-native settlers in the area were Benjamin Hawkins and his family. Benjamin Hawkins was appointed an Indian Agent in 1796 by President George Washington. His territory included all tribes south of the Ohio River. Hawkins and his family arrived in the area in 1803, and built a compound on the banks of the Flint River, later known as the Creek Agency Reserve.¹ In 1775, before Hawkins' arrival, naturalist William Bartram traveled through the area, noting a previously unknown plant commonly known today as the oakleaf hydrangea.² Bartram described the area he explored as a "delightful diversified rural scene" and noted that it "promises a happy, fruitful, and salubrious region, when cultivated by industrious inhabitants."³

In 1822, Crawford County was established as Georgia's 57th county and named for United States Secretary of War and Treasury William Harris

Crawford.⁴ The area was formerly a part of Houston County, established as Georgia's 52st county in 1821 by the Treaty of Indian Springs.⁵ Knoxville was settled along the Federal Wire Road, the main stagecoach and telegraph route from Washington D.C. to New Orleans, and named the county seat. The county's only incorporated city is Roberta, which lies a mile west of Knoxville. Roberta originated as a railroad office and warehouse, later growing into a railroad town.

When Crawford County was founded, the community was a part of an agricultural economy, relying mainly on cotton and oats. Agriculture remains a vital part of the economy in Crawford County today, as well as manufacturing and health and social services.⁶ Crawford County Residents of Crawford County also work in neighboring areas including Macon, Georgia.

¹ "History," Crawford County Historical Society, accessed January 8, 2015, <http://www.crawfordcountyhistoricalsociety.org/Pages/History.html>.

² David H. Rembert Jr., "The Botanical Explorations of William Bartram in the Southeast," Bartram Trail Conference, accessed January 8, 2015, <http://www.bartramtrail.org/pages/explor.html>.

³ William Bartram, *Travels of William Bartram* (New York: Cosimo, 2007), 308.

⁴ "History," Crawford County Historical Society, accessed January 8, 2015, <http://www.crawfordcountyhistoricalsociety.org/Pages/History.html>.

⁵ "Houston County, Georgia," accessed January 8, 2015, <http://www.houstoncountygga.com/>.

⁶ "Crawford County," *New Georgia Encyclopedia*, last updated August 14, 2013, <http://www.georgiaencyclopedia.org/articles/counties-cities-neighborhoods/crawford-county>



Survey Results

A total of 148 historic resources that meet and maintain a minimum level of age, architectural integrity, and historic significance were identified in unincorporated Crawford County. These resources are buildings, with 104 (70%) still remaining.

Crawford County has a fairly even distribution of extant historic residential house types. These types include Bungalow (25%), Georgian Cottage (16.3%), Commercial Block (12.5%), and the Gabled ell cottage (10.6%). This distribution is expected based on the year of construction of identified resources, and the developmental history of the county.

The construction date of all resources ranged from the late 1810s to the early 1970s. The period with the most extant resources is circa 1910-1919 (24.3%), followed by circa 1920-1929 (19.6%). The majority of these structures are vernacular expressions of residential dwellings. The county seat, Roberta, was formerly an incorporated area, but is currently unincorporated. This change in municipal status accounts for the increased number of commercial structures documented in the survey. The variance in building type and architectural styles exhibited in unincorporated Crawford County is typical for heavily agrarian Georgia communities.

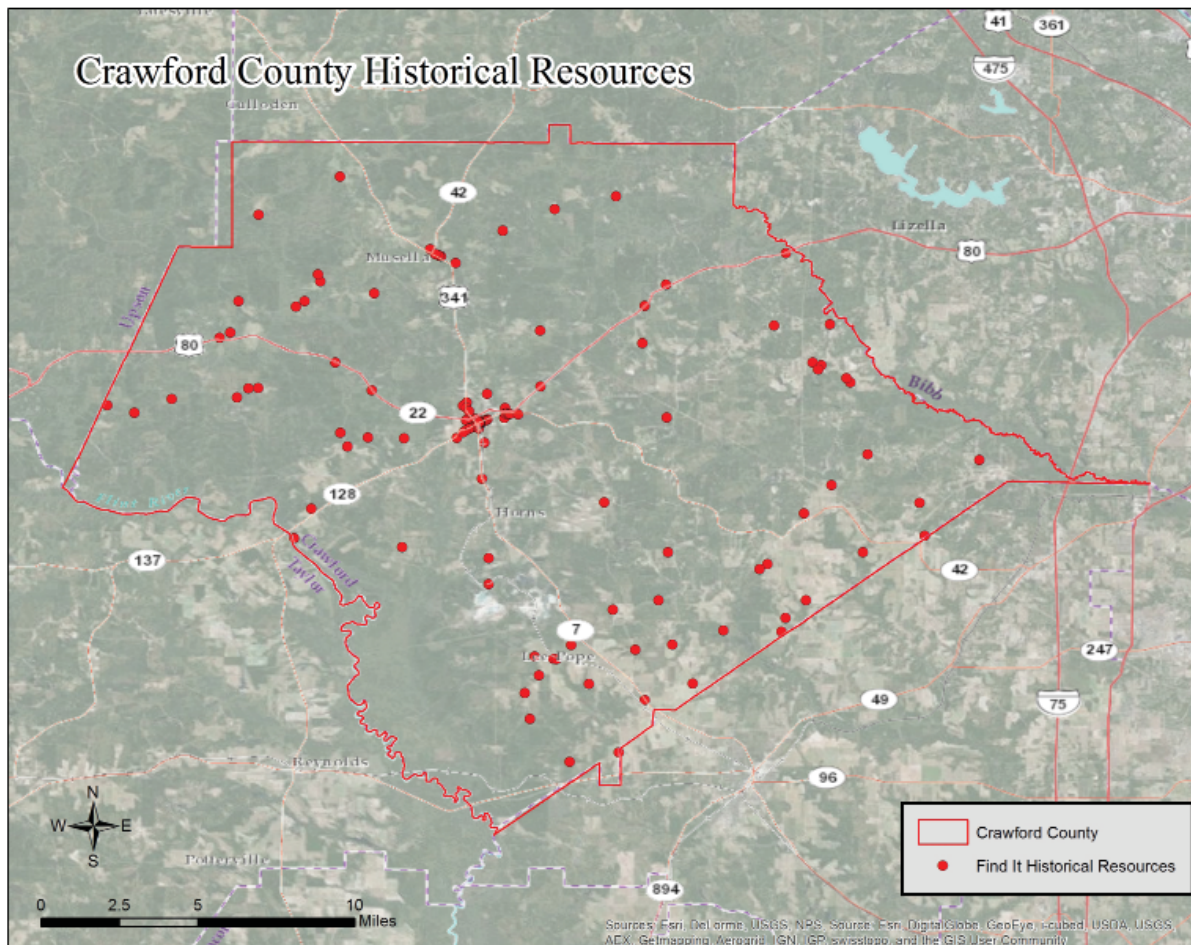


Table 1: All Identified Resources

Field ID	Resource ID	X	Y	Description	NRHP Eligibility
CD-1	245758	32.56342	-83.96862	Mt. Zion Cemetery	May Meet Criteria
CD-2	245759	32.66004	-83.92325	Central hallway	May Meet Criteria
CD-3	245760	32.62388	-83.89761	Gabled ell cottage	May Meet Criteria
CD-4	245761	32.59944	-83.91181	Georgian cottage	May Meet Criteria
CD-5	245762	32.6145	-83.93874	Cool Springs Church	Does Not Meet Criteria
CD-6	245763	32.61734	-83.92113	New South Cottage	May Meet Criteria
CD-7	245764	32.6546	-83.87725	Queen Anne cottage	May Meet Criteria
CD-8	245765	32.65222	-83.88087	Little Union Primitive Baptist	Does Not Meet Criteria
CD-9	245766	32.63797	-83.9276	Union Church Road	May Meet Criteria
CD-10	245767	32.63344	-83.94851	Gordon Chapel Cemetery	Does Not Meet Criteria
CD-11	245768	32.59185	-83.93394	Central hallway	May Meet Criteria
CD-12	245769	32.5992	-83.95973	Georgian cottage	May Meet Criteria
CD-13	245770	32.56781	-83.94585	Active use Cemetery	Does Not Meet Criteria
CD-14	245771	32.58378	-83.98695	Active use Cemetery	Does Not Meet Criteria
CD-15	245772	32.59512	-83.9893	Unnamed cemetery	Does Not Meet Criteria
CD-16	245773	32.60323	-83.98262	Active use Cemetery	Does Not Meet Criteria
CD-17	245774	32.61086	-83.97597	Saddlebag	May Meet Criteria
CD-18	245775	32.61073	-83.97475	New South Cottage	May Meet Criteria
CD-19	247597	32.612274	-83.969558	Saddlebag	May Meet Criteria
CD-20	245776	32.6171111	-83.9678	Harris Chapel Cemetery	Does Not Meet Criteria
CD-21	245777	32.61155	-83.98546	Benevolence Church Cemetery	Does Not Meet Criteria
CD-22	245778	32.76141	-84.12524	Georgian house	Appear to meet
CD-23	245779	32.75604	-84.14079	Gabled ell cottage	May Meet Criteria
CD-24	245780	32.75917	-84.13002	Bethel Church and Cemetery	Does Not Meet Criteria
CD-25	245781	32.7278	-84.182	Olive Grove Church and Cemetery	May Meet Criteria
CD-26	245782	32.72446	-84.1694	Elam Cemetery	May Meet Criteria
CD-27	245783	32.73082	-84.15223	Gabled ell cottage	May Meet Criteria
CD-28	245784	32.7357	-84.11684	Saddlebag	May Meet Criteria
CD-29	245785	32.73581	-84.11227	Georgian cottage	May Meet Criteria
CD-30	245786	32.72549	-84.03765	Providence Cemetery	Does Not Meet Criteria
CD-31	245787	32.73475	-84.0585	Bungalow	Appears to Meet CriteriaNR criteria
CD-32	245788	32.71514	-84.0744	Bungalow	Appears to Meet CriteriaNR criteria
CD-33	245789	32.70893	-84.07113	Shiloh Cemetery	Does Not Meet Criteria
CD-34	245790	32.73155	-84.12212	Hollis Road Cemetery	Does Not Meet Criteria
CD-35	245791	32.6802	-84.08772	Mt. Carmel Church and Cemetery	Does Not Meet Criteria
CD-36	245792	32.6663	-84.09584	Benjamin Hawkins Grave	May Meet Criteria
CD-37	245793	32.71257	-84.04504	Wilson Cemetery	May Meet Criteria
CD-38	245794	32.7295	-84.06173	Double pen	May Meet Criteria
CD-39	245795	32.66238	-84.04585	Bethel Independent Church and Cemetery	Does Not Meet Criteria
CD-40	245796	32.64537	-84.0059	Bungalow	May Meet Criteria
CD-41	245797	32.65722	-84.006	Pleasant Hill Church and Cemetery	
CD-42	245798	32.74773	-84.07674	Kendrick Family Cemetery	Does Not Meet Criteria
CD-43	245799	32.7759	-84.1213	Mt. Carmel Cemetery	Does Not Meet Criteria

Table 2: Resource Type

Resource Type	Count	Percentage
Building	104	70%
Site	44	30%

Table 3: Current Resource Use

Resource Use	Count	Percent
Agriculture/ Food Processing	1	0.7%
Church Religious Structure	2	1.4%
Commercial: Business	3	2.0%
Commercial: Office	3	2.0%
Commercial: Restaurant	2	1.4%
Commercial: Retail	6	4.1%
Entertainment: Museum	1	0.7%
Funerary: Cemetery	48	32.4%
General Store	1	0.7%
Government: Courthouse	1	0.7%
Residential: Single Family Dw	65	43.9%
Residential: Multifamily Housi	1	0.7%
Vacant	13	8.8%
Work in Progress	1	0.7%

Table 4: Date of Construction

Date of Construction	Count	Percent
1800-1839	3	2.0%
1840-1849	6	4.1%
1850-1859	5	3.4%
1860-1869	5	3.4%
1870-1879	3	2.0%
1880-1889	3	2.0%
1890-1899	11	7.4%
1900-1909	23	15.5%
1910-1919	36	24.3%
1920-1929	29	19.6%
1930-1939	15	10.1%
1940-1949	5	3.4%
1950-1959	1	0.7%
1960-1969	2	1.4%
1970-1974	1	0.7%

Table 5: Building Types

Building Type	Count	Percentage
Agricultural Building	1	1.0%
American Small House	1	1.0%
Bungalow	26	25.0%
Central Hallway	5	4.8%
Central Tower Church	1	1.0%
Commercial Block	13	12.5%
Courthouse	1	1.0%
Double Pen	1	1.0%
Front Gable Church	1	1.0%
Gabled ell cottage	11	10.6%
Georgian Cottage	17	16.3%
Georgian House	3	2.9%
Jail	1	1.0%
Multiple Retail	1	1.0%
New South Cottage	4	3.8%
No Academic Type	1	1.0%
Queen Anne Cottage	4	3.8%
Queen Anne House	2	1.9%
Saddlebag	7	6.7%
Single Pen	1	1.0%
Unknown	2	1.9%

Table 6: Architectural Style

Architectural Style	Count	Percentage
Colonial Revival	2	1.4%
Craftsman	26	17.6%
Folk Victorian	19	12.8%
Gothic Revival	1	0.7%
Greek Revival	2	1.4%
Moderne	1	0.7%
No Academic Style	96	64.9%
Stripped Classicism	1	0.7%

Architectural Analysis

Overview of Architecture in Georgia

The architecture of unincorporated Crawford County, both residential and commercial, is comparable to other agrarian areas in Georgia which developed primarily during the late 19th- and early 20th centuries. The prevalent architectural styles still extant are exemplary of popular styles during the early 20th Century and represent a period of significant growth county-wide.

Building Types

The architecture in unincorporated Crawford County is comprised primarily of single family dwellings with few commercial, religious, and industrial buildings. The buildings identified during this survey have a fairly even distribution of residential house types as defined in the context, Georgia's Living Places: Historic Houses in their Landscaped Settings. The most prevalent building type overall was the 'Bungalow', with 28 of the 88 identified buildings falling into this category. The bungalow as a house type is the most prevalent, with 26 identified, followed by the Georgian Cottage, of which 17 remain in the county.

Architectural Styles

The survey identified a number of architectural styles that were popular in the late 19th- and early 20th centuries. Elements of the Craftsman style were noted on 26 (17.6%) extant resources, which is typical of 1920s and 1930s construction. The Folk Victorian style was documented on 19 (12.8%) resources, and was popular from approximately 1900-1920.

64.9% (96) of all documented resources exhibited no architectural style. A building with no architectural style may be historic, but does not have any characteristics or elements of high style, or classical architecture. Buildings in unincorporated areas usually do not embody high styles, and this figure is representative of the state as a whole. This figure also includes sites and cemeteries, which do not exhibit any formal burial site planning.

Integrity

The majority of the resources in unincorporated Crawford County exhibited a fair to good level of architectural integrity. The integrity of these resources was most often affected by non-historic alterations, which compromise the resource's design, materials, and/or historic workmanship. These changes include additions to the building and material replacement including but not limited to: exterior cladding, porch alterations, window or door replacement, etc.

13 of the 148 (8.8%) structures are currently vacant. Many resources documented as 'vacant' maintain excellent integrity; these resources have few, if any alterations to their historic fabric. Vacant properties are considered highly endangered because they are more susceptible to fire and vandalism. Additionally, repairs and weatherproofing are not carried out in a timely manner, thus leaving the structures to decay. The condition of many of these resources is poor, but with minimal intervention, many of them can be restored.

Of the resources with minimal overall alterations, 9 appear to meet the criteria for eligibility for the National Register of Historic Places. 96 resource 'may meet' the National Register criteria; these resources have good to excellent architectural integrity, but warrant further research as to their accurate age and historic significance.



Conclusion

Crawford County has a fair representation of extant historic resources given its agricultural heritage. The disparate location of these resources, paired with the overall integrity of these structures do not indicate any potential National Historic Landmarks or historic districts. These resources are typical of unincorporated Georgia, with the bulk of residential structures dating to the turn-of-the-twentieth-century, when Crawford County saw a surge in population and agricultural production. These structures are representative examples of southeastern residential architecture.

A number of mid-century residential and religious structures were documented which may gain historic significance in their own right in the near future. Many mid-century residential resources maintain good integrity with few alterations; religious structures from the same period however, have undergone extensive alterations such as large additions or material replacements. Not documented in this study, but anecdotally noted, were a number of structures dating to the late 1970s and 1980s. If the architectural integrity of these potential resources remain intact, they may warrant a historic inventory in the coming decades.





Crawford County Historic Resource

Field ID: CD-1
GNAHRGIS ID: 245758
County: Crawford
Preliminary NR Assessment: May Meet
Status - Listed: Not Listed



Mount Zion Cemetery and Church
Pea Ridge Road, .5 mi From Terminus Of Aldridge

Coordinates: 32.56342, -83.96862



Resource Type Site

Resource Use Funerary: Cemetery

Date of Construction 1972

Common Names None

≈ Number of Burials 6

Oldest Burial 1972(Only Known Date)

Burial Description N/A

Cemetery Description Ledger Stones
Non-Contributing Church
-Renovated In 2002



Crawford County Historic Resource

Field ID: CD-2
GNAHRGIS ID: 245759
County: Crawford
**Preliminary NR
Assessment:** May Meet
Status - Listed: Not Listed



Giles Road
1/3 mi West of Gassett Road

Coordinates: 32.66004, -83.92325



Resource Type Building

Resource Use Residential: Single family dwelling

Date of Construction Circa 1910

Building Type House;
Central Hallway

Structural System Balloon Frame

Style No Academic Style

Roof Gable:Side

Exterior Cladding Wood: Weatherboard

Foundation Pier:Brick

Porch Verandah

Windows Double Hung Sash: 6/6

Chimney Both Gable Ends: Brick

Alterations Front Porch Meets Older
Enclosed Addition



Crawford County Historic Resource

Field ID: CD-3
GNAHRGIS ID: 245760
County: Crawford
**Preliminary NR
Assessment:** May Meet
Status - Listed: Not Listed



4404 Walton Road

Coordinates: 32.62388, -83.89761



Resource Type Building

Resource Use Residential: Single family dwelling

Date of Construction Circa 1910

Building Type House;
Gabled Ell Cottage

Structural System Balloon Frame

Style Folk Victorian

Roof Gable:Cross

Exterior Cladding Wood: Weatherboard

Foundation Pier with Infill:Brick

Porch Verandah

Windows Double Hung Sash: 6/6

Chimney Off-center, Ridgeline:
Brick

Alterations Small Shed Addition In
Rear
Some Windows Replaced
With Factory 9/9



Crawford County Historic Resource

Field ID: CD-4
GNAHRGIS ID: 245761
County: Crawford
**Preliminary NR
Assessment:** May Meet
Status - Listed: Not Listed



164 Rackley Road

Coordinates: 32.59944, -83.91181



Resource Type Building

Resource Use Residential: Single family dwelling

Date of Construction Circa 1920

Building Type House;
Georgian Cottage

Structural System Balloon Frame

Style Colonial Revival

Roof Hip

Exterior Cladding Wood: Weatherboard

Foundation Continuous: Brick

Porch Portico

Windows Double Hung Sash: 6/6

Chimney Off-center, Ridgeline:
Brick

Alterations Older Rear Addition On
Left Side, With Only
Remaining Chimney
Some Panes Replaced



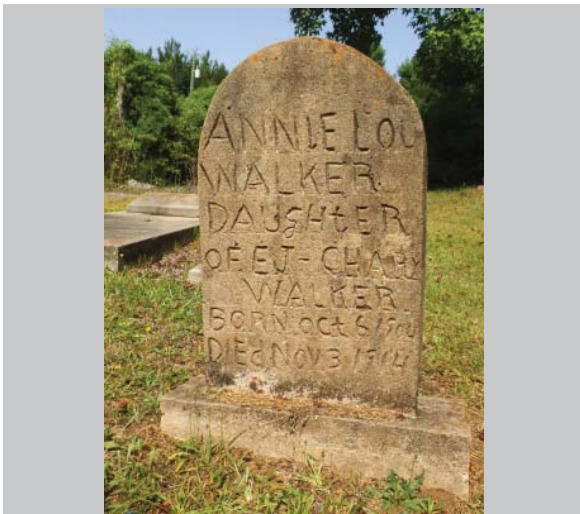
Crawford County Historic Resource

Field ID: CD-5
GNAHRGIS ID: 245762
County: Crawford
Preliminary NR Assessment: Does Not Meet
Status - Listed: Not Listed



Cool Springs Church Cemetery
1.5 mi East From 341, Cool Springs Road

Coordinates: 32.61450, -83.93874



Resource Type Site

Resource Use Funerary: Cemetery

Date of Construction 1914

Common Names Lucas

≈ Number of Burials 70

Oldest Burial 1914

Burial Description Eastern Star
Mason Couple
4 Veterans: (2) Army, (2) ~~Cavalry~~

Cemetery Description Several Hand-Inscribed
Tombstones
Non-Contributing Church



Crawford County Historic Resource

Field ID: CD-6
GNAHRGIS ID: 245763
County: Crawford
**Preliminary NR
Assessment:** May Meet
Status - Listed: Not Listed



East Houze Road
1/8 mi West Of Collins Road

Coordinates: 32.61734, -83.92113



Resource Type Building

Resource Use Residential: Single family dwelling

Date of Construction Circa 1910

Building Type House;
New South Cottage

Structural System Balloon Frame

Style Folk Victorian

Roof Gable:Multiple
Hip

Exterior Cladding Wood: Weatherboard

Foundation Pier with Infill:Brick

Porch Verandah

Windows Double Hung Sash: 6/6

Chimney Multiple (2): Brick

Alterations Older Wing Addition With
Side Gable On Right Side



Crawford County Historic Resource

Field ID: CD-7
GNAHRGIS ID: 245764
County: Crawford
Preliminary NR Assessment: May Meet
Status - Listed: Not Listed



Union Church Road
Across From Blasingame Road

Coordinates: 32.65460, -83.87725



Resource Type Building

Resource Use Residential: Single family dwelling

Date of Construction Circa 1920

Building Type House:
Queen Anne Cottage

Structural System Balloon Frame

Style No Academic Style

Roof Truncated Hip

Exterior Cladding Wood: Weatherboard

Foundation Pier with Infill:Brick

Porch Verandah

Windows Double Hung Sash: 2/2

Chimney Off-center Within Roof
Surface: Brick

Alterations Filled In Addition On Side
Rear Addition



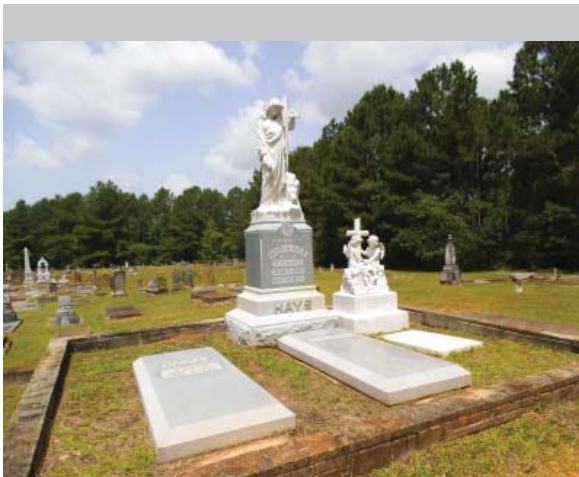
Crawford County Historic Resource

Field ID: CD-8
GNAHRGIS ID: 245765
County: Crawford
Preliminary NR Assessment: Does Not Meet
Status - Listed: Not Listed



Little Union Primitive Baptist Church
Union Church Road, 1/8 mi West of Blasingame Road

Coordinates: 32.65222, -83.88087



Resource Type Site

Resource Use Funerary: cemetery

Date of Construction 1825

Common Names None

≈ Number of Burials 250

Oldest Burial 1857

Burial Description Several Veterans
Woodsmen of the World

Cemetery Description Multiple Sculptured Grave
Markers
Multiple Gated & Terraced
Sections For Family Plots
Several Obelisks
Large Statue to James
Taylor



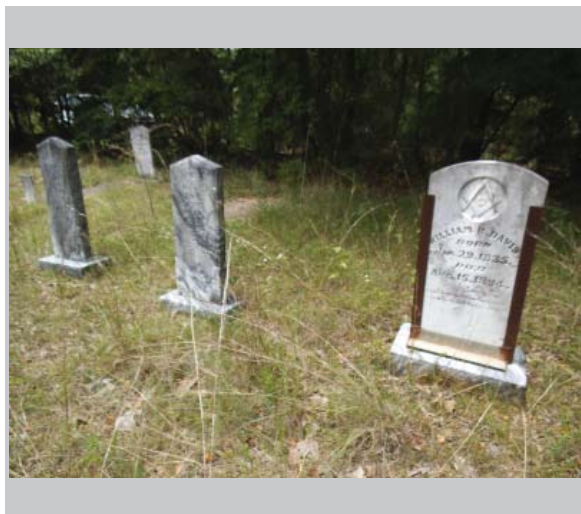
Crawford County Historic Resource

Field ID: CD-9
GNAHRGIS ID: 245766
County: Crawford
Preliminary NR Assessment: May Meet
Status - Listed: Not Listed



Union Church Road
.5 mi West of Collins Road

Coordinates: 32.63797, -83.92760



Resource Type Site

Resource Use Funerary: Cemetery

Date of Construction 1878

Common Names Davis, Schofill

≈ Number of Burials 25

Oldest Burial 1878

Burial Description A Saint Statue
Foot Stones
Graves Face East

Cemetery Description Small Metal Fenced Area
Brick Markers



Crawford County Historic Resource

Field ID: CD-10
GNAHRGIS ID: 245767
County: Crawford
Preliminary NR Assessment: Does Not Meet
Status - Listed: Not Listed



Gordon Chapel
End of Gordon Chapel Road

Coordinates: 32.63344, -83.94861



Resource Type Site

Resource Use Funerary: Cemetery

Date of Construction 1917

Common Names None

≈ Number of Burials 60

Oldest Burial 1917

Burial Description Graves Face East
1 WWII Veteran

Cemetery Description Non-Contributing Church
Unmarked Ledger Stones



Crawford County Historic Resource

Field ID: CD-11
GNAHRGIS ID: 245768
County: Crawford
**Preliminary NR
Assessment:** May Meet
Status - Listed: Not Listed



Highway 341, .5 mi East of Rackley

Coordinates: 32.59185, -83.93394



Resource Type Building

Resource Use Residential: Single family dwelling

Date of Construction Circa 1910

Building Type House;
Central Hallway

Structural System Balloon Frame

Style No Academic Style

Roof Gable:Cross

Exterior Cladding Wood: Weatherboard

Foundation Pier with Infill:Brick

Porch Portico

Windows Double Hung Sash: 6/6

Chimney Off-center, Ridgeline:
Brick

Alterations N/A



Crawford County Historic Resource

Field ID: CD-12
GNAHRGIS ID: 245769
County: Crawford
**Preliminary NR
Assessment:** May Meet
Status - Listed: Not Listed



At The Terminus of Lee Pope Road

Coordinates: 32.59920, -83.95973



Resource Type Building

Resource Use Residential:Single family dwelling

Date of Construction Circa 1910

Building Type House;
Georgian Cottage

Structural System Balloon Frame

Style No Academic Style

Roof Gable:Multi
Hip

Exterior Cladding Wood: Weatherboard

Foundation Pier with Infill:Brick

Porch Verandah

Windows Double Hung Sash: 2/2

Chimney Off-center Within Roof
Surface: Brick

Alterations Rear Addition With Side
Gable



Crawford County Historic Resource

Field ID: CD-13
GNAHRGIS ID: 245770
County: Crawford
Preliminary NR Assessment: Does Not Meet
Status - Listed: Not Listed



Pea Ridge Road
Across From Cleveland Road

Coordinates: 32.56781, -83.94585



Resource Type Site

Resource Use Funerary: Cemetery

Date of Construction 1907

Common Names Smisson

≈ Number of Burials 10

Oldest Burial 1907

Burial Description N/A

Cemetery Description Small Plot



Crawford County Historic Resource

Field ID: CD-14
GNAHRGIS ID: 245771
County: Crawford
Preliminary NR Assessment: Does Not Meet
Status - Listed: Not Listed



East Lawson Merritt Road
1/4 mi East of Cummings Road

Coordinates: 32.58378, -83.98695



Resource Type Site

Resource Use Funerary: Cemetery

Date of Construction 1877

Common Names Cassett & Matthews

≈ Number of Burials 23

Oldest Burial 1877

Burial Description N/A

Cemetery Description New Chain Link Fence
Large, Sculptural Markers



Crawford County Historic Resource

Field ID: CD-15
GNAHRGIS ID: 245772
County: Crawford
Preliminary NR Assessment: Does Not Meet
Status - Listed: Not Listed



Corner of Magnolia Road & Cummings Road

Coordinates: 32.59512, -83.98930



Resource Type Site

Resource Use Funerary: Cemetery

Date of Construction 1923

Common Names Cassett

≈ Number of Burials 4

Oldest Burial 1923

Burial Description N/A

Cemetery Description Fenced In
Overgrown, Limited
Legibility



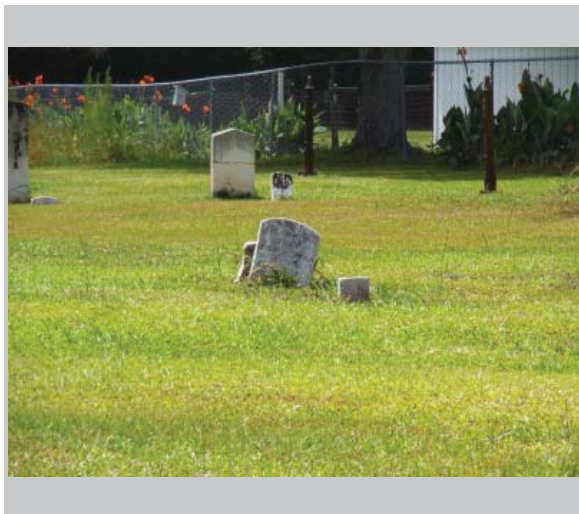
Crawford County Historic Resource

Field ID: CD-16
GNAHRGIS ID: 245773
County: Crawford
Preliminary NR Assessment: Does Not Meet
Status - Listed: Not Listed



Cummings Road, Across From Cummings Lane

Coordinates: 32.60323, -83.98262



Resource Type Site

Resource Use Funerary: Cemetery

Date of Construction 1865

Common Names None

≈ Number of Burials 8

Oldest Burial 1865

Burial Description N/A

Cemetery Description Remnants of Fence
Neighboring House



Crawford County Historic Resource

Field ID: CD-17
GNAHRGIS ID: 245774
County: Crawford
Preliminary NR Assessment: May Meet
Status - Listed: Not Listed



244 Zenith Mill Circle

Coordinates: 32.61086, -83.97597



Resource Type Building

Resource Use Residential: Single family dwelling

Date of Construction Circa 1910

Building Type House;
Saddlebag

Structural System Balloon Frame

Style No Academic Style

Roof Gable:Side

Exterior Cladding Wood: Weatherboard

Foundation Pier:Brick

Porch Verandah

Windows Double Hung Sash: 2/2
Factory Sash: 9/9

Chimney Center: Brick

Alterations Front Windows & Door Replaced
2 Rear Additions, 1 Shed, 1 Gabled Ell



Crawford County Historic Resource

Field ID: CD-18
GNAHRGIS ID: 245775
County: Crawford
Preliminary NR Assessment: May Meet
Status - Listed: Not Listed



Zenithland
193 Zenith Mil Circle

Coordinates: 32.61073, -83.97475



Resource Type Building

Resource Use Residential: Single family dwelling

Date of Construction Circa 1900

Building Type House;
New South Cottage

Structural System Balloon Frame

Style Folk Victorian

Roof Gable:Multi

Exterior Cladding Prism Synthetics:
Vinyl/Aluminum Siding

Foundation Continuous:Brick

Porch Verandah

Windows Double Hung Sash: 6/6

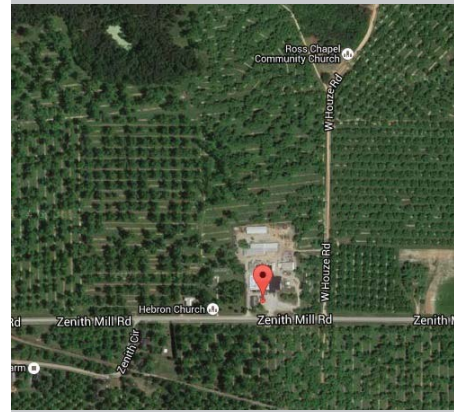
Chimney Unknown

Alterations Ell Addition On Rear



Crawford County Historic Resource

Field ID: CD-19
GNAHRGIS ID: 247597
County: Crawford
Preliminary NR Assessment: May Meet
Status - Listed: Not Listed



Pearson Farm
Lee Pope Road, Closed By Big Six Farms Road

Coordinates: 32.612274, -83.969558



Resource Type Building (10)

Resource Use Residential; Single Family, Multiple Family Dwelling

Date of Construction 1910

Building Type House; Saddlebag

Structural System Balloon Frame

Style No Academic Style

Roof Multiple

Exterior Cladding Weatherboard; Sheet Metal; Vinyl Siding

Foundation Multiple

Porch Multiple

Windows Multiple

Chimney Multiple

Alterations Farm village, a collection of housing and some auxiliary buildings -8 single story likely used for worker housing



Crawford County Historic Resource

Field ID: CD-20
GNAHRGIS ID: 245776
County: Crawford
Preliminary NR Assessment: Does Not Meet
Status - Listed: Not Listed



Harris Chapel Cemetery
Houze Road, .5 mi West of Highway 341

Coordinates: 32.617111, -83.9678



Resource Type Site

Resource Use Funerary: Cemetery

Date of Construction 1914

Common Names None

≈ Number of Burials 150

Oldest Burial 1914

Burial Description Couple Of Veterans
All Graves Face East

Cemetery Description Simple Markers & Ledger
Stones
Non-Contributing Church



Crawford County Historic Resource

Field ID: CD-21
GNAHRGIS ID: 245777
County: Crawford
Preliminary NR Assessment: Does Not Meet
Status - Listed: Not Listed



Benevolence (Zenith) Church
Cummings Road, Across From Big Six Farms Road

Coordinates: 32.6115, -83.98546



Resource Type Site

Resource Use Funerary: Cemetery

Date of Construction 1887

Common Names McCarty, Carr, Gassitt

≈ Number of Burials 100

Oldest Burial 1887

Burial Description 2 Woodsmen of the World

Cemetery Description Small, Fenced-In Section



Crawford County Historic Resource

Field ID: CD-22
GNAHRGIS ID: 245778
County: Crawford
**Preliminary NR
Assessment:** May Meet
Status - Listed: Not Listed



West Hope Well Road
.5 mi East of Highway 80

Coordinates: 32.76141, -84.12524



Resource Type Building

Resource Use Vacant

Date of Construction Circa 1840

Building Type House;
Georgian

Structural System Brace Frame

Style Greek Revival

Roof Gable:Side

Exterior Cladding Wood: Weatherboard

Foundation Pier with Infill:Brick

Porch Portico

Windows Unknown

Chimney Double Gable End, Both
Gable Ends: Brick

Alterations N/A



Crawford County Historic Resource

Field ID: CD-23
GNAHRGIS ID: 245779
County: Crawford
Preliminary NR Assessment: May Meet
Status - Listed: Not Listed



Northeast Corner of Billy White Road
and Hwy 80

Coordinates: 32.75604, -84.14079



Resource Type Building

Resource Use Residential: Single family dwelling

Date of Construction Circa 1900

Building Type House;
Gabled Ell Cottage

Structural System Balloon Frame

Style No Academic Style

Roof Hip

Exterior Cladding Wood: Clapboard

Foundation Pier:Brick

Porch Verandah

Windows Double Hung Sash: 6/6
Factory Sash: 2/2

Chimney Off-center Within Roof
Surface: Brick

Alterations N/A



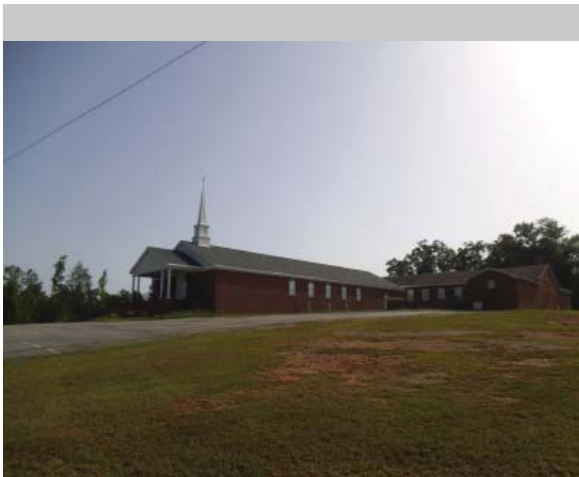
Crawford County Historic Resource

Field ID: CD-24
GNAHRGIS ID: 245780
County: Crawford
**Preliminary NR
Assessment:** Does Not Meet
Status - Listed: Not Listed



Bethel Church & Cemetery
West Hopewell Road, 1/4 mi East of Highway 80

Coordinates: 32.75917, -84.13002



Resource Type Site

Resource Use Funerary: Cemetery

Date of Construction 1905

Common Names Respress, Colbert,
Dannely

≈ Number of Burials 250

Oldest Burial 1909

Burial Description Graves Facing East
Several Veterans, WWII

Cemetery Description Non-Contributing Church



Crawford County Historic Resource

Field ID: CD-25
GNAHRGIS ID: 245781
County: Crawford
Preliminary NR Assessment: May Meet
Status - Listed: Not Listed



Olive Grove Church & Cemetery
Olive Grove Church Road, 2 mi South of Highway 80

Coordinates: 32.7278, -83.1820



Resource Type Site

Resource Use Funerary: Cemetery

Date of Construction 1926

Common Names Blasingame, Fegan

≈ Number of Burials 200

Oldest Burial 1926

Burial Description 1 Mason
Graves Face East

Cemetery Description 1 Fenced Section
1 Brick Mausoleum
Non-Contributing Church



Crawford County Historic Resource

Field ID: CD-26
GNAHRGIS ID: 245782
County: Crawford
Preliminary NR Assessment: May Meet
Status - Listed: Not Listed



Elam Cemetery
Whitaker Drive, 1/2 mi East of Olive Grove Road

Coordinates: 32.72446, -84.16940



Resource Type Site

Resource Use Funerary: Cemetery

Date of Construction 1849

Common Names Corbin, Bennett

≈ Number of Burials 30

Oldest Burial 1849

Burial Description N/A

Cemetery Description 3 Small Fenced Sections
Simple Headstones;
Obelisks



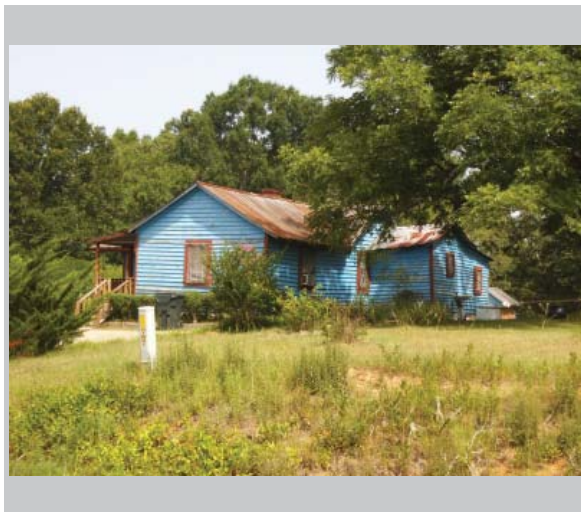
Crawford County Historic Resource

Field ID: CD-27
GNAHRGIS ID: 245783
County: Crawford
**Preliminary NR
Assessment:** May Meet
Status - Listed: Not Listed



Whitaker Rd
1/8 mi East of Charlie Reeves Rd

Coordinates: 32.73082, -84.15223



Resource Type Building

Resource Use Residential: Single family dwelling

Date of Construction Circa 1920

Building Type House;
Gabled Ell Cottage

Structural System Balloon Frame

Style No Academic Style

Roof Gable:Side

Exterior Cladding Wood: Weatherboard

Foundation Unknown

Porch Wrap-Around

Windows Double Hung Sash: 6/6

Chimney Center: Brick

Alterations Ell Addition At Rear
Shed Addition On Right Side



Crawford County Historic Resource

Field ID: CD-28
GNAHRGIS ID: 245784
County: Crawford
**Preliminary NR
Assessment:** May Meet
Status - Listed: Not Listed



Whitaker Rd
1/4 mi East of Hollis Rd

Coordinates: 32.7357, -84.11684



Resource Type Building

Resource Use Residential: Single family dwelling

Date of Construction Circa 1900

Building Type House;
Saddlebag

Structural System Balloon Frame

Style No Academic Style

Roof Gable:Side

Exterior Cladding Wood: Weatherboard

Foundation Pier: Stone

Porch Wrap-Around

Windows Double Hung Sash: 6/6

Chimney Center: Brick

Alterations Left Rear Gable Addition
With New Shed Addition



Crawford County Historic Resource

Field ID: CD-29
GNAHRGIS ID: 245785
County: Crawford
Preliminary NR Assessment: May Meet
Status - Listed: Not Listed



Whitaker Rd
Across From Intersection With Beasley Rd

Coordinates: 32.73581, -84.11227



Resource Type Building

Resource Use Residential: Single family dwelling

Date of Construction Circa 1910

Building Type House;
Georgian Cottage

Structural System Balloon Frame

Style No Academic Style

Roof Hip

Exterior Cladding Wood: Weatherboard

Foundation Pier: Brick

Porch Verandah

Windows Double Hung Sash: 6/6

Chimney Off-Center Within Roof
Surf: Brick

Alterations Addition on Rear Left Side



Crawford County Historic Resource

Field ID: CD-30
GNAHRGIS ID: 245786
County: Crawford
Preliminary NR Assessment: Does Not Meet
Status - Listed: Not Listed



Providence Cemetery
Highway 80 , 1 mi West of Roberta City Limits

Coordinates: 32.72549, -84.03765



Resource Type Site

Resource Use Funerary: Cemetery

Date of Construction 1853

Common Names Lewis, Moncrief

≈ Number of Burials 75

Oldest Burial 1863

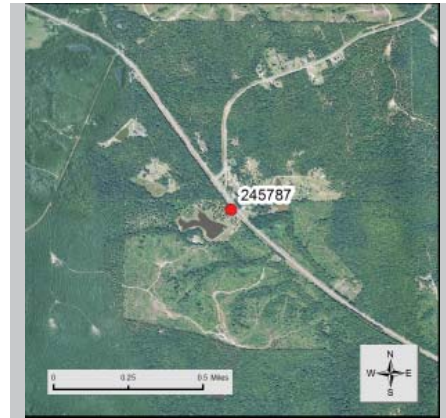
Burial Description 1 Confederate Soldier
1 Revolutionary War Vet

Cemetery Description Fenced Section
Graves Face East
1 Walled Section



Crawford County Historic Resource

Field ID: CD-31
GNAHRGIS ID: 245787
County: Crawford
Preliminary NR Assessment: Does Meet
Status - Listed: Not Listed



Across From 2971 Highway 80

Coordinates: 32.73475, -84.05985



Resource Type Building

Resource Use Residential: Single family dwelling

Date of Construction Circa 1930

Building Type House;
Bungalow

Structural System Balloon Frame

Style No Academic Style

Roof Hip

Exterior Cladding Wood: Weatherboard

Foundation Unknown

Porch Wrap-Around

Windows Double Hung Sash: 6/6
Factory Sash: 1/1

Chimney Off-Center, Ridgeline:
Stuccoed Masonry

Alterations N/A



Crawford County Historic Resource

Field ID: CD-32
GNAHRGIS ID: 245788
County: Crawford
Preliminary NR Assessment: Does Meet
Status - Listed: Not Listed



Howard Road
1/2 mi South of Whitaker Road

Coordinates: 32.71514, -84.07440



Resource Type Building

Resource Use Residential: Single family dwelling

Date of Construction Circa 1920

Building Type House;
Bungalow

Structural System Balloon Frame

Style Craftsman

Roof Hip

Exterior Cladding Wood: Weatherboard

Foundation Unknown

Porch Verandah

Windows Unknown

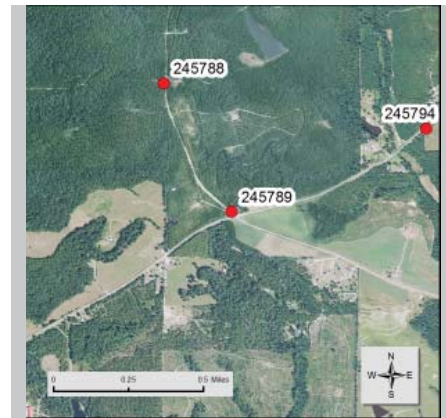
Chimney Off-Center Within Roof
Surface: Brick

Alterations N/A



Crawford County Historic Resource

Field ID: CD-33
GNAHRGIS ID: 245789
County: Crawford
Preliminary NR Assessment: Does Not Meet
Status - Listed: Not Listed



Shiloh Cemetery
Howard Road at Intersection With Walker Chapel Rd

Coordinates: 32.70893, -84.07113



Resource Type Site

Resource Use Funerary: Cemetery

Date of Construction 1853

Common Names N/A

≈ Number of Burials 30

Oldest Burial 1853

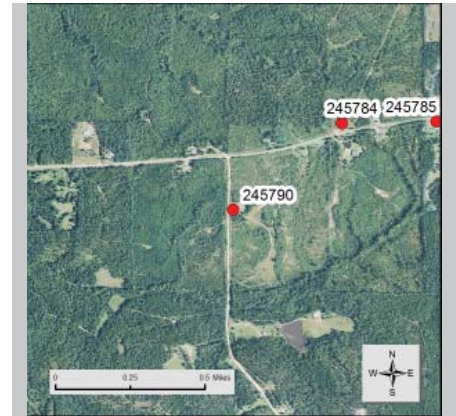
Burial Description 1 Confederate Veteran

Cemetery Description Unmarked Leger Stones
Site Appears To Be
Disturbed: Markers
Broken



Crawford County Historic Resource

Field ID: CD-34
GNAHRGIS ID: 245790
County: Crawford
Preliminary NR Assessment: Does Not Meet
Status - Listed: Not Listed



Hollis Road
1/8 mi South of Whitaker Road

Coordinates: 32.73155, -84.12212



Resource Type Site

Resource Use Funerary: Cemetery

Date of Construction 1915

Common Names N/A

≈ Number of Burials 75

Oldest Burial 1915

Burial Description Masons

Cemetery Description Active Use
Graves Face East
Broken Stones
Brick Outlines Graves



Crawford County Historic Resource

Field ID: CD-35
GNAHRGIS ID: 245791
County: Crawford
Preliminary NR Assessment: Does Not Meet
Status - Listed: Not Listed



Mt. Carmel Church and Cemetery
Hortman Road, 1/4 mi North of Highway 128

Coordinates: 32.68020, -84.08772



Resource Type Site

Resource Use Funerary: Cemetery

Date of Construction 1895

Common Names Hollis, Braswell, Appling, Willis

≈ Number of Burials 100

Oldest Burial 1895

Burial Description N/A

Cemetery Description Wooded Setting, Behind Church
Non-Contributing Church
Family Plots
Concrete & Granite Ledger Stones



Crawford County Historic Resource

Field ID: CD-36
GNAHRGIS ID: 245792
County: Crawford
Preliminary NR Assessment: May Meet
Status - Listed: Not Listed



Beryamin Hawkins Grave
End of Beryamin Hawkins Road

Coordinates: 32.6665, -84.09584



Resource Type Site

Resource Use Funerary: Cemetery

Date of Construction 1816

Common Names N/A

≈ Number of Burials 1

Oldest Burial 1816

Burial Description Revolutionary War Colonel
-George Washington's Staff

Cemetery Description Fieldstone Monument
Stacked Stone Markers
Chain Link Fence



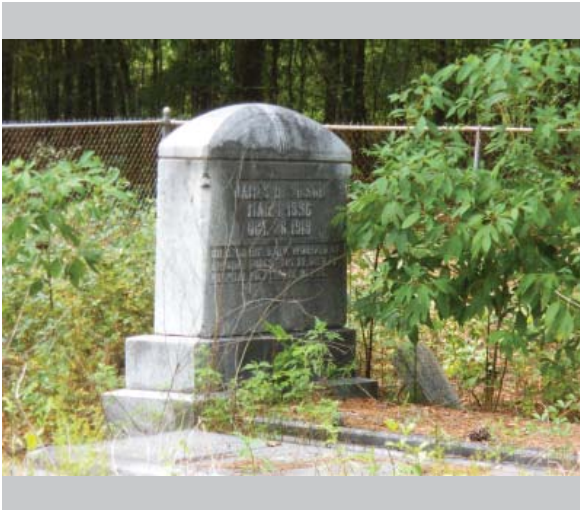
Crawford County Historic Resource

Field ID: CD-37
GNAHRGIS ID: 245793
County: Crawford
Preliminary NR Assessment: May Meet
Status - Listed: Not Listed



Wilson Cemetery
Moncrief Road 1 mi North of 128

Coordinates: 32.71257, -84.04504



Resource Type Site

Resource Use Funerary: Cemetery

Date of Construction 1896

Common Names N/A

≈ Number of Burials 10

Oldest Burial 1896

Burial Description N/A

Cemetery Description Fenced In, Chain Link Fence
2 Larger Headstones
Ledgesones



Crawford County Historic Resource

Field ID: CD-38
GNAHRGIS ID: 245794
County: Crawford
**Preliminary NR
Assessment:** May Meet
Status - Listed: Not Listed



Moncrief Rd
1/2 mi East of Walker Chapel Rd

Coordinates: 32.71295, -84.06173



Resource Type Building

Resource Use Residential: Single family dwelling

Date of Construction Circa 1900

Building Type House;
Double Pen

Structural System Balloon Frame

Style No Academic Style

Roof Gable:Side

Exterior Cladding Wood: Weatherboard

Foundation Pier: Stone

Porch Verandah

Windows Double Hung Sash: 6/6

Chimney Gable-End, Exterior: Brick

Alterations Ell Addition At Rear
Shed Porch on Rear
Addition



Crawford County Historic Resource

Field ID: CD-39
GNAHRGIS ID: 245795
County: Crawford
Preliminary NR Assessment: Does Not Meet
Status - Listed: Not Listed



Bethel Independent Church & Pope Rd, 1/2 mi North of Avera Rd

Coordinates: 32.66238, -84.04585



Resource Type Site

Resource Use Funerary: Cemetery

Date of Construction 1948

Common Names Hollis, Tennyson

≈ Number of Burials 75

Oldest Burial 1948

Burial Description WWI

Cemetery Description Active Use
Concrete Ledger Stones
Ledger Stones (CMU)
Non-Contributing Church



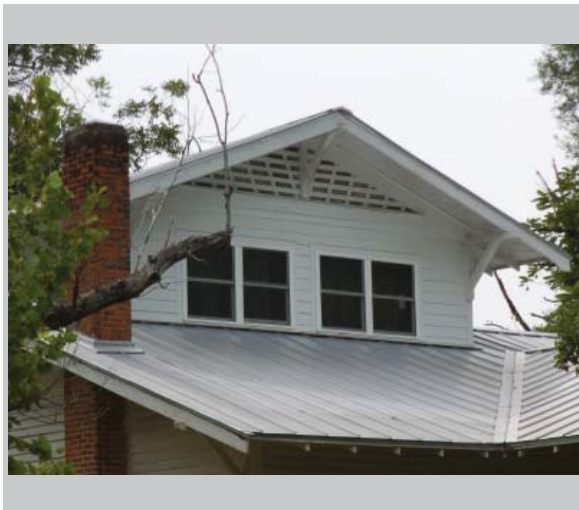
Crawford County Historic Resource

Field ID: CD-40
GNAHRGIS ID: 245796
County: Crawford
**Preliminary NR
Assessment:** May Meet
Status - Listed: Not Listed



1990 Zenith Mill Road

Coordinates: 32.64537, -84.00590



Resource Type Building

Resource Use Residential: Single family dwelling

Date of Construction Circa 1930

Building Type House;
Bungalow

Structural System Balloon Frame

Style Craftsman

Roof Gable:Side

Exterior Cladding Wood: Weatherboard

Foundation Unknown

Porch Verandah

Windows Double Hung Sash: 3/1

Chimney Off-Center Within Roof
Surface: Brick

Alterations Addition At Rear



Crawford County Historic Resource

Field ID: CD-41
GNAHRGIS ID: 245797
County: Crawford
Preliminary NR Assessment: Does not meet
Status - Listed: Not Listed



Pleasant Hill Church & Cemetery
Avera Rd at Intersection with Zenith Mill

Coordinates: 32.65722, -84.00600



Resource Type Site

Resource Use Funerary: Cemetery

Date of Construction Unknown

Common Names McCarty

≈ Number of Burials 100

Oldest Burial 1890

Burial Description Many Young Children
2 CSA

Cemetery Description 2 Fenced Sections with
Decorative Iron Fence
Non-Contributing Church
Few Broken Markers
Active use cemetery



Crawford County Historic Resource

Field ID: CD-42
GNAHRGIS ID: 245798
County: Crawford
Preliminary NR Assessment: Does Not Meet
Status - Listed: Not Listed



Highway 80
1 mi West of Whitaker Rd

Coordinates: 32.74773, -84.07674



Resource Type Site

Resource Use Funerary: Cemetery

Date of Construction 1862

Common Names Kendrick

≈ Number of Burials 6

Oldest Burial 1862

Burial Description 1 Confederate Soldier

Cemetery Description Kendrick Family
Only 2 Graves Marked



Crawford County Historic Resource

Field ID: CD-43
GNAHRGIS ID: 245799
County: Crawford
Preliminary NR Assessment: Does not meet
Status - Listed: Not Listed



Mt. Carmel Cemetery
Mt. Carmel Rd. 3/4 mi North of Hopewell Rd.

Coordinates: 32.7759, -84.1213



Resource Type Site

Resource Use Funerary: Cemetery

Date of Construction 1910

Common Names Ross, Miller, Bentley

≈ Number of Burials 30

Oldest Burial 1910

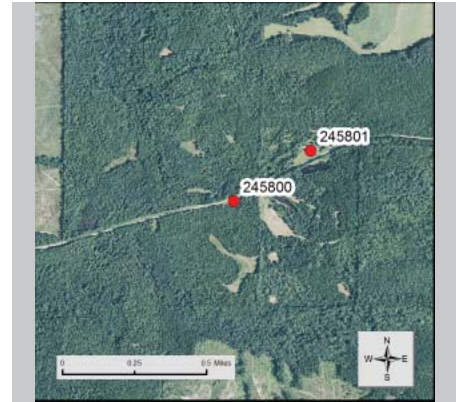
Burial Description CSA

Cemetery Description Several Iron fences
2 monumental-style markers
mostly ledger stones



Crawford County Historic Resource

Field ID: CD-44
GNAHRGIS ID: 245800
County: Crawford
Preliminary NR Assessment: Does not meet
Status - Listed: Not Listed



Hammock-Johnson Family Cemetery
Hopewell Rd. 1.5 mi E of Mt Carmel Rd

Coordinates: 32.77348, -84.09480



Resource Type Site

Resource Use Funerary: Cemetery

Date of Construction 1858

Common Names
Hammock, Johnson

≈ Number of Burials 15

Oldest Burial 1858

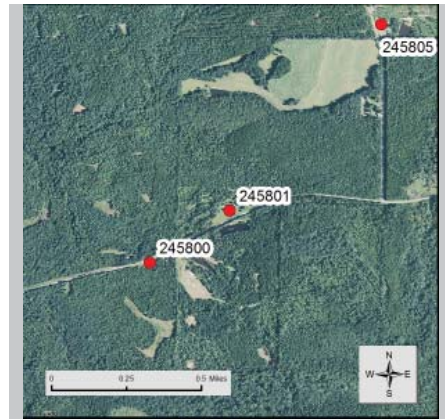
Burial Description

Cemetery Description 2 Iron Fenced Sections
All Standing markers



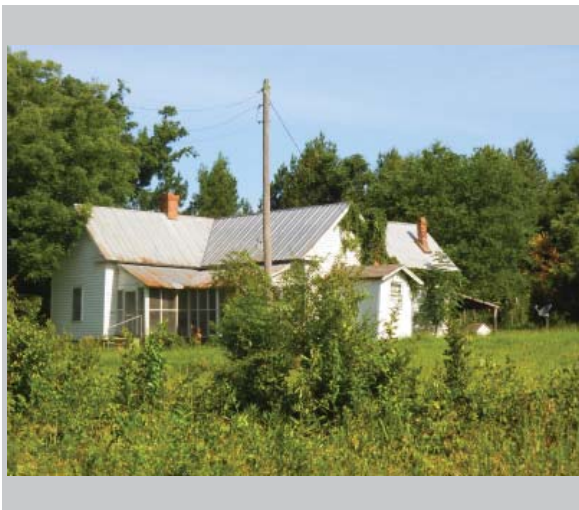
Crawford County Historic Resource

Field ID: CD-45
GNAHRGIS ID: 245801
County: Crawford
Preliminary NR Assessment: Does not meet
Status - Listed: Not Listed



4178 Hopewell Rd.

Coordinates: 32.7760, -84.0909



Resource Type Building

Resource Use Residential: Single Family Dwelling

Date of Construction Circa 1900

Building Type Gabled ell cottage

Structural System Balloon Frame

Style No Academic Style

Roof Gable: multi

Exterior Cladding Wood: Weatherboard

Foundation Unknown

Porch Verandah

Windows Factory Sash: 2/2

Chimney Off-center Within Roof Surface: Brick

Alterations Rear Gable Addition
Side Gable Addition
Side Shed Addition



Crawford County Historic Resource

Field ID: CD-46
GNAHRGIS ID: 245802
County: Crawford
**Preliminary NR
Assessment:** May meet
Status - Listed: Not Listed



Corner of Oak Arrow Church Rd and Hopewell Rd

Coordinates: 32.77956, -84.05878



Resource Type Building

Resource Use Residential: Single Family Dwelling

Date of Construction Circa 1930

Building Type Bungalow: front gable

Structural System Balloon Frame

Style No Academic Style

Roof Gable:Front

Exterior Cladding Wood: Weatherboard

Foundation Pier:Brick

Porch Verandah

Windows Factory Sash: 1/1

Chimney Off-center Within Roof Surface: Brick

Alterations Rear chimney altered



Crawford County Historic Resource

Field ID: CD-47
GNAHRGIS ID: 245803
County: Crawford
Preliminary NR Assessment: May meet
Status - Listed: Not Listed



2152 Old 341 W

Coordinates: 32.83340, -84.07450



Resource Type Building

Resource Use Residential: Single Family Dwelling

Date of Construction Circa 1910

Building Type Saddlebag

Structural System Balloon Frame

Style Folk Victorian

Roof Gable:Side

Exterior Cladding Wood: Weatherboard

Foundation Pier with Infill:Brick

Porch Verandah

Windows Double Hung Sash: 4/4

Chimney Center: Brick

Alterations Rear gable and Shed additions



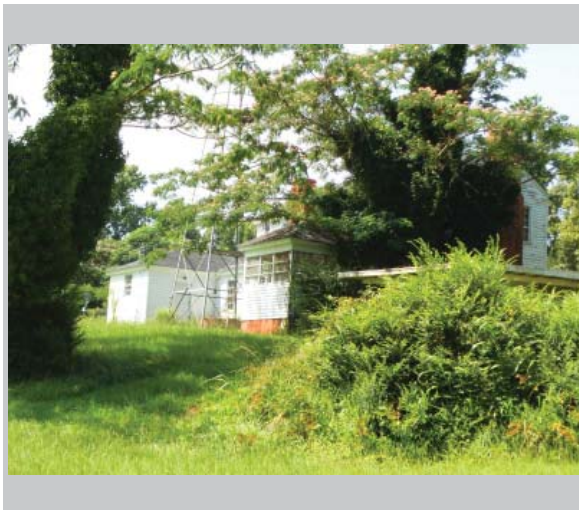
Crawford County Historic Resource

Field ID: CD-48
GNAHRGIS ID: 245804
County: Crawford
**Preliminary NR
Assessment:** May meet
Status - Listed: Not Listed



City of Refuge
City of Refuge Rd, Musella GA

Coordinates: 32.815688, -84.112144



Resource Type Building

Resource Use Residential: Vacant

Date of Construction Circa 1910

Building Type Georgian

Structural System Balloon Frame

Style Colonial Revival

Roof Gable: Side

Exterior Cladding Wood: Weatherboard

Foundation Pier with Infill: Brick

Porch Portico

Windows Double Hung Sash: 9/6

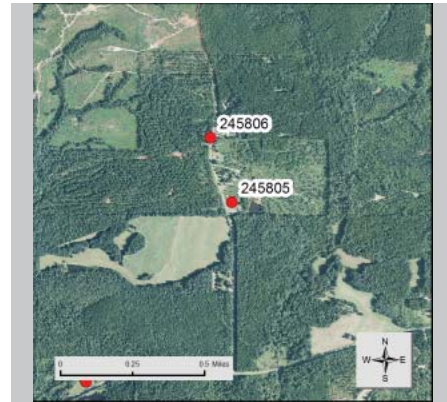
Chimney Off-center Within Roof
Surface: Brick

Alterations Gabled addition on right
hipped wing additions rear



Crawford County Historic Resource

Field ID: CD-49
GNAHRGIS ID: 245805
County: Crawford
Preliminary NR Assessment: Does not meet
Status - Listed: Not Listed



Taylor Rd. .5 miles North of Hopewell Rd.

Coordinates: 32.78497, -84.08408



Resource Type Site

Resource Use Funerary: Cemetery

Date of Construction 1891

Common Names
Mitchell

≈ Number of Burials 20

Oldest Burial 1891

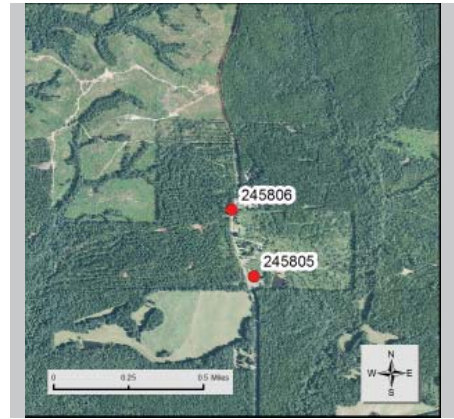
Burial Description

Cemetery Description CMU with slight terrace
few plots overgrown



Crawford County Historic Resource

Field ID: CD-50
GNAHRGIS ID: 245806
County: Crawford
**Preliminary NR
Assessment:** May meet
Status - Listed: Not Listed



Taylor Rd. 1 mile N of Hopewell Rd

Coordinates: 32.78824, -84.08470



Resource Type Building

Resource Use Residential: Vacant

Date of Construction Circa 1900

Building Type Saddlebag

Structural System Balloon Frame

Style No Academic Style

Roof Gable:Side

Exterior Cladding Wood: Weatherboard

Foundation Unknown

Porch Verandah

Windows Double Hung Sash: 9/6

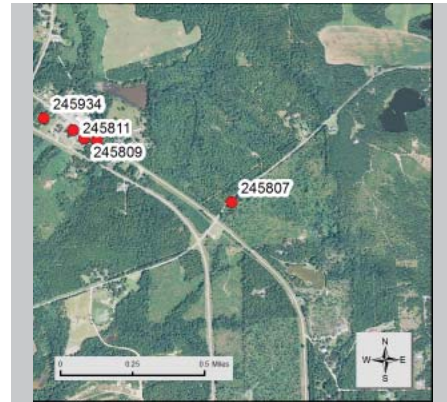
Chimney Center (2): Brick

Alterations Side gable ell addition
Re sized Windows
Newer Roof



Crawford County Historic Resource

Field ID: CD-51
GNAHRGIS ID: 245807
County: Crawford
Preliminary NR Assessment: Not Eligible
Status - Listed: Not Listed



Webb-Felts Cemetery
Hopewell Rd. .25 miles East of Hwy 341

Coordinates: 32.79362, -84.02123



Resource Type Site

Resource Use Funerary: Cemetery

Date of Construction 1866

Common Names

≈ Number of Burials 20

Oldest Burial 1866

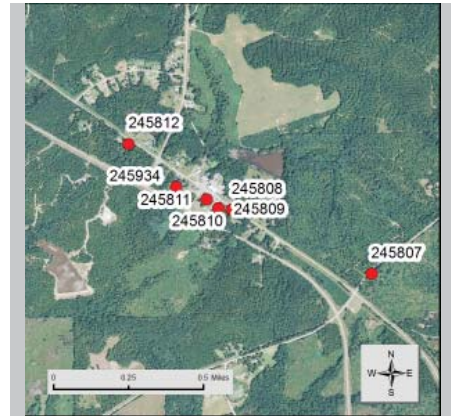
Burial Description CSA

Cemetery Description CMU Wall
1 large stone memorial
mostly ledger stones



Crawford County Historic Resource

Field ID: CD-52
GNAHRGIS ID: 245808
County: Crawford
Preliminary NR Assessment: May be Eligible
Status - Listed: Not Listed



3333 Hwy. 7

Coordinates: 32.79613, -84.02795



Resource Type Building

Resource Use Residential: Single Family Dwelling

Date of Construction Circa 1915

Building Type Queen Anne cottage

Structural System Balloon Frame

Style Folk Victorian

Roof Gable:Multi

Exterior Cladding Wood: Weatherboard

Foundation Unknown

Porch Wrap-Around

Windows Double Hung Sash: 2/2

Chimney multiple random(3): Brick

Alterations Large rear addition



Crawford County Historic Resource

Field ID: CD-53
GNAHRGIS ID: 245809
County: Crawford
Preliminary NR Assessment: May be Eligible
Status - Listed: Not Listed



Musilla Baptist Church
corner of Church St. and Musilla Rd.

Coordinates: 32.79680, -84.02860



Resource Type Building

Resource Use Religious: Church

Date of Construction Circa 1915

Building Type Church: Central Tower

Structural System Balloon Frame

Style Gothic revival

Roof Gable:Side

Exterior Cladding Wood: Weatherboard

Foundation Pier with Infill:Brick

Porch No Porch

Windows Casement: pointed arch:
2/2

Chimney No chimney observed

Alterations



Crawford County Historic Resource

Field ID: CD-54
GNAHRGIS ID: 245810
County: Crawford
Preliminary NR Assessment: May be Eligible
Status - Listed: Not Listed



Dickey Farms Peach Packaging

Coordinates: 32.79723, -54.02916



Resource Type Building

Resource Use Agricultural/ Food Processing

Date of Construction Circa 1930

Building Type Packaging Building

Structural System Balloon Frame

Style No Academic Style

Roof Gable:Side

Exterior Cladding Wood: Weatherboard

Foundation Unknown

Porch veranda

Windows open bays

Chimney no chimney observed

Alterations



Crawford County Historic Resource

Field ID: CD-55
GNAHRGIS ID: 245811
County: Crawford
Preliminary NR Assessment: May be Eligible
Status - Listed: Not Listed



General Store
corner of CR 141 and Musella Rd

Coordinates: 32.79723, -84.02916



Resource Type Building

Resource Use Commercial: General store

Date of Construction Circa 1910

Building Type 1 part commercial block

Structural System Balloon Frame

Style No Academic Style

Roof Flat

Exterior Cladding Brick: common

Foundation Continuous:Brick

Porch Verandah

Windows Double Hung Sash:

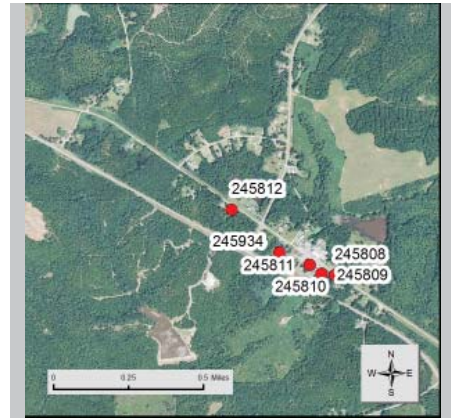
Chimney no chimney observed

Alterations



Crawford County Historic Resource

Field ID: CD-56
GNAHRGIS ID: 245812
County: Crawford
**Preliminary NR
Assessment:** May be Eligible
Status - Listed: Not Listed



Musilla Rd. 1/8 miles West of Hwy 42

Coordinates: 32.7999, -84.0329



Resource Type Building

Resource Use Residential: Single Family Dwelling

Date of Construction Circa 1910

Building Type Georgian Cottage

Structural System Balloon Frame

Style Folk Victorian

Roof Hip, Gable:Cross

Exterior Cladding Wood: Weatherboard

Foundation Unknown

Porch Verandah

Windows Double Hung Sash: 4/4

Chimney Off-center Within Roof Surface: Brick

Alterations Shed addition back



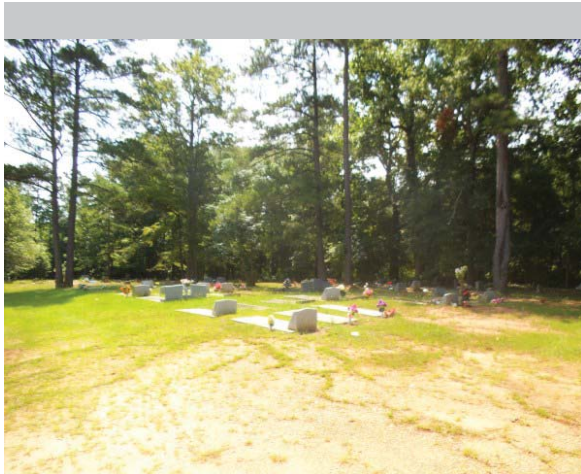
Crawford County Historic Resource

Field ID: CD-57
GNAHRGIS ID: 245813
County: Crawford
Preliminary NR Assessment: Not Eligible
Status - Listed: Not Listed



Hopewell Rd.
1 mile W of Moran Rd.

Coordinates: 32.82418,-83.94718



Resource Type Site

Resource Use Funerary: Cemetery

Date of Construction 1918

Common Names Moran, Maynard,
Stallings, Raines

≈ Number of Burials 100

Oldest Burial 1918

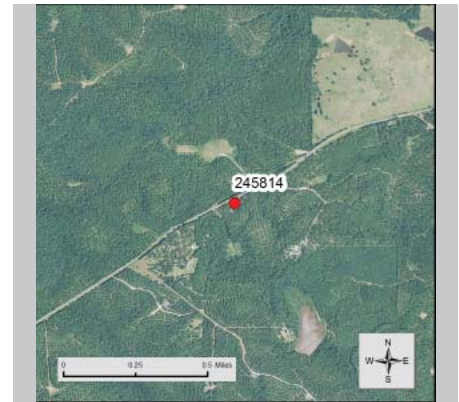
Burial Description Headstones and Ledger
Stones

Cemetery Description Active Use
Graves Face East
Mostly less than 50 years
of age



Crawford County Historic Resource

Field ID: CD-58
GNAHRGIS ID: 245814
County: Crawford
**Preliminary NR
Assessment:** Not Eligible
Status - Listed: Not Listed



E. Hopewell Rd, .5 Miles SE of Intersection w/ Allen Rd.

Coordinates: 32.81835,-83.97552



Resource Type Site

Resource Use Funerary: Cemetry

Date of Construction 1924

Common Names Stroud.Harris, Jones

≈ Number of Burials 150

Oldest Burial 1924

Burial Description Ledger Stones: Concrete

Cemetery Description Active Use
Natural Forest Setting:
Mature Trees



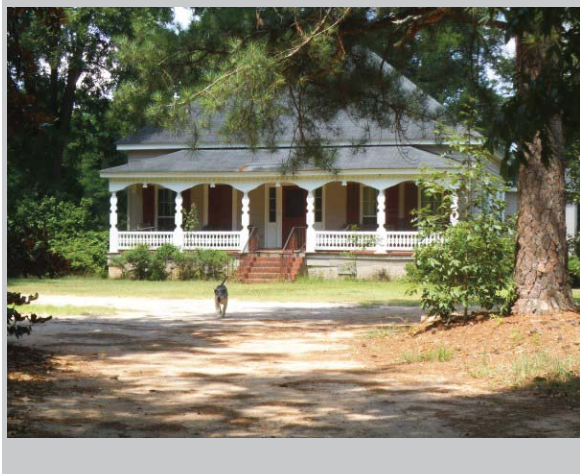
Crawford County Historic Resource

Field ID: CD-59
GNAHRGIS ID: 245815
County: Crawford
Preliminary NR Assessment: Eligible
Status - Listed: Not Listed



Hopewell Rd. 2 Miles W of Allen Rd.

Coordinates: 32.80850, -83.99943



Resource Type Building

Resource Use Residential: Single Family Dwelling

Date of Construction Circa 1910

Building Type Georgian Cottage

Structural System Balloon Frame

Style Folk Victorian

Roof Hip: Composition/asphalt shingle

Exterior Cladding Wood: Weatherboard, Shipshap

Foundation Pier with Infill: Brick

Porch Verandah

Windows Double Hung Sash: 6/6

Chimney No Chimney Observed

Alterations Rear Gabled Addition



Crawford County Historic Resource

Field ID: CD- 60
GNAHRGIS ID: 245816
County: Crawford
**Preliminary NR
Assessment:** Not Eligible
Status - Listed: Not Listed



Bethel Church and Cemetery
Sandy Point Rd. 1 Mile E of Highway 80

Coordinates: 32.75651,-83.93490



Resource Type Site

Resource Use Funerary: Cemetery

Date of Construction 1926

Common Names

≈ Number of Burials 100

Oldest Burial 1926

Burial Description WWII Vets and Several
Masons

Cemetery Description Active Use
Graves Face East
Headstones
Ledger Stones: Granite



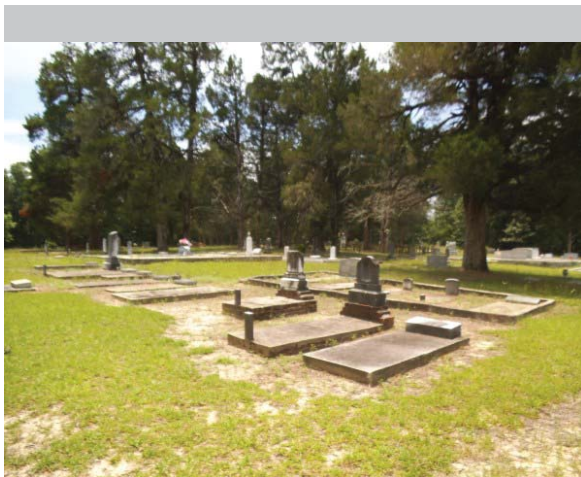
Crawford County Historic Resource

Field ID: CD- 61
GNAHRGIS ID: 245817
County: Crawford
Preliminary NR Assessment: Not Eligible
Status - Listed: Not Listed



Salem Primitive Church & Cemetery
Salem Church Rd. 2 Miles W of Highway 80

Coordinates: 32.76239,-83.98215



Resource Type Site/Building

Resource Use Funerary: Cemetery
Religious: Church

Date of Construction 1840

Common Names Sandifer, McGee, and
Dent

≈ Number of Burials 150

Oldest Burial 1840

Burial Description Confederate and Several
Woodsmen

Cemetery Description Active Use
Front Gabled Church: Now
covered in vinyl
Decorative iron fenced
section
Modern chain link fence
surrounding entire
cemetery
Several larger obelisk
markers



Crawford County Historic Resource

Field ID: CD-62
GNAHRGIS ID: 245818
County: Crawford
Preliminary NR Assessment: Not Eligible
Status - Listed: Not Listed



Hancock Cemetery
Highway 80, .5 Mile E of Gray Fox Ln.

Coordinates: 32.77372,-83.93394



Resource Type Site

Resource Use Funerary: Cemetery

Date of Construction 1887

Common Names Hancock

≈ Number of Burials 50

Oldest Burial 1887

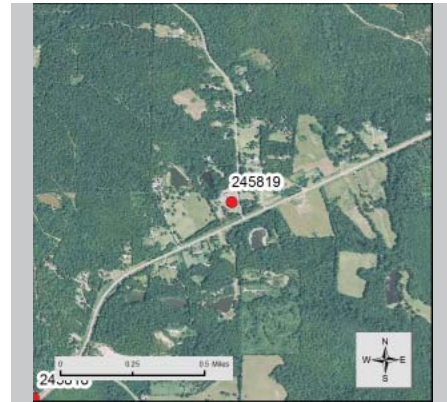
Burial Description Hancock Family

Cemetery Description Does not appear to be in active use
Memorial to 2 family members that died in 1826 and were buried elsewhere
Very overgrown
Modern chain link fence around graves



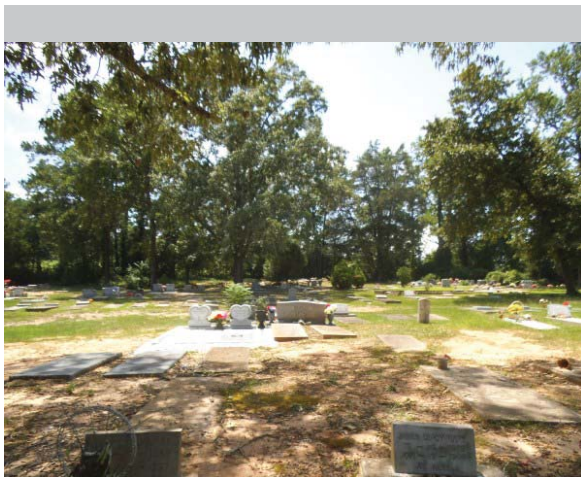
Crawford County Historic Resource

Field ID: CD- 63
GNAHRGIS ID: 245819
County: Crawford
Preliminary NR Assessment: Not Eligible
Status - Listed: Not Listed



Springhill Baptist Church & Cemetery
Highway 80, .5 Mile E of Causey Rd.

Coordinates: 32.78288,-83.92411



Resource Type Site/Building

Resource Use Funerary: Cemetery
Religious: Church

Date of Construction 1918

Common Names

≈ Number of Burials 200

Oldest Burial 1918

Burial Description Several WWII Veterans

Cemetery Description Active Use
Non-contributing Church



Crawford County Historic Resource

Field ID: CD- 64
GNAHRGIS ID: 245820
County: Crawford
Preliminary NR Assessment: Not Eligible
Status - Listed: Not Listed



Fellowship Church and Cemetery
Sandy Point Rd, .5 Mile W of Girl Scout Rd.

Coordinates: 32.76468,-83.87413



Resource Type Site/Building

Resource Use Funerary: Cemetery
Religious: Church

Date of Construction 1951

Common Names Cameron, Chapman, and
Busby

≈ Number of Burials 50

Oldest Burial 1951

Burial Description Mostly less than 50 years
of age

Cemetery Description Active Use
Non-contributing Church



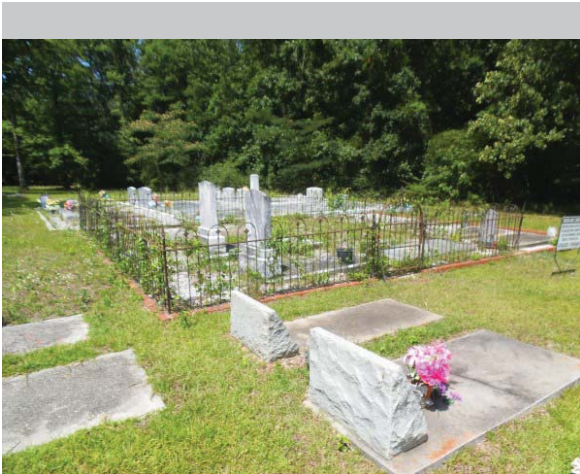
Crawford County Historic Resource

Field ID: CD-65
GNAHRGIS ID: 245821
County: Crawford
Preliminary NR Assessment: Not Eligible
Status - Listed: Not Listed



Dixon United Methodist Cemetery
Sandy Point Rd, .5 Mile N of Knoxville Rd

Coordinates: 32.76530,-83.84850



Resource Type Site/Building

Resource Use Funerary: Cemetery
Religious: Church

Date of Construction 1854

Common Names

≈ Number of Burials 200

Oldest Burial 1854

Burial Description 7 Confederate Soldiers
Several Brick built up
Mausoleums

Cemetery Description Active Use
Non-contributing Church
Several decorative metal
fenced areas
Outlined family plots
Graves wrap around both
sides and rear of Church



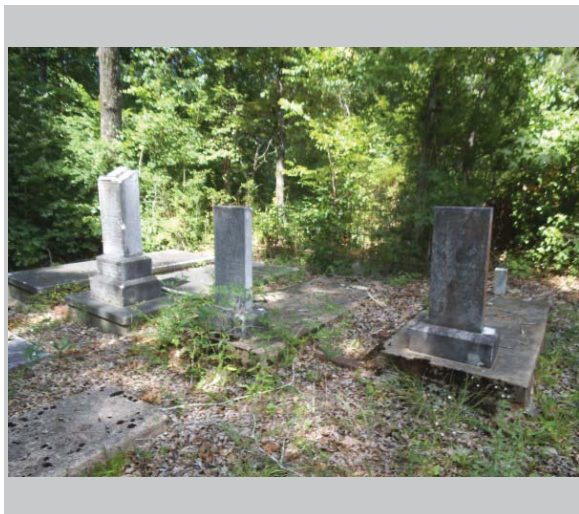
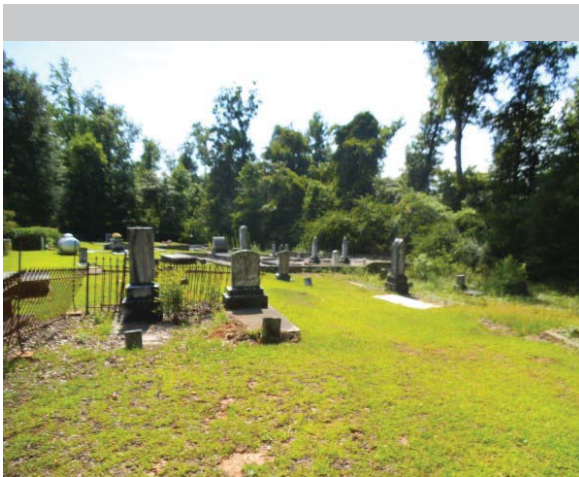
Crawford County Historic Resource

Field ID: CD-66
GNAHRGIS ID: 245822
County: Crawford
Preliminary NR Assessment: Not Eligible
Status - Listed: Not Listed



Bethany Bible Church & Cemetery
10367 Highway 80

Coordinates: 32.79817,-83.86882



Resource Type Site

Resource Use Funerary: Cemetery
Religious: Church

Date of Construction 1823

Common Names Bonner, Causey, Bostick

≈ Number of Burials 150

Oldest Burial 1823

Burial Description Civil war, revolutionary w.
Several Obelisks/
decorative headstones

Cemetery Description Active Use
Non-contributing Church
Decorative iron/ stone
fences and walls



Crawford County Historic Resource

Field ID: CD- 67
GNAHRGIS ID: 245823
County: Crawford
Preliminary NR Assessment: Not Eligible
Status - Listed: Not Listed



Boy Scout Rd, 1 Mile S of Lower Hartley Bridge Rd.

Coordinates: 32.70269,-83.77952



Resource Type Site

Resource Use Funerary: Cemetery

Date of Construction 1931

Common Names Brown

≈ Number of Burials 20

Oldest Burial 1931

Burial Description Brown Family
Small ledger stones

Cemetery Description Not in Active Use
Chain link fence
surrounding graves
Fairly simple markers



Crawford County Historic Resource

Field ID: CD-68
GNAHRGIS ID: 245824
County: Crawford
Preliminary NR Assessment: Not Eligible
Status - Listed: Not Listed



Lower Hartley Bridge Rd, .5 Mile W of Tyler Dr.

Coordinates: 32.70513,-83.83095



Resource Type Site

Resource Use Funerary: Cemetery

Date of Construction 1920

Common Names Mason and Shurley

≈ Number of Burials 11

Oldest Burial 1920

Burial Description Mason and Shurley families

Cemetery Description No longer in Active use
Mostly ledger stones
Simple Markers
Graves face East



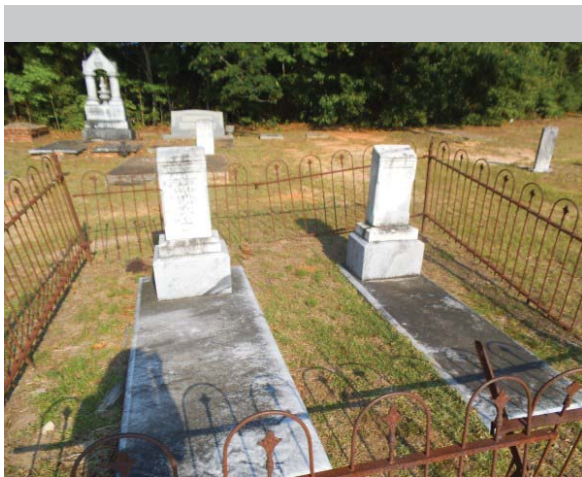
Crawford County Historic Resource

Field ID: CD-69
GNAHRGIS ID: 245825
County: Crawford
Preliminary NR Assessment: Not Eligible
Status - Listed: Not Listed



Victory Baptist Church Cemetery
Marshall Mill Rd, .5 Mile S of Richardson Mill Rd.

Coordinates: 32.67793,-83.86035



Resource Type Site

Resource Use Funerary: Cemetery
Religious: Church

Date of Construction 1860

Common Names Aultman and Joyner

≈ Number of Burials 200

Oldest Burial 1920

Burial Description Confederate Soldier

Cemetery Description Active use
Non-contributing church
Graves extend around
three sides of the Church
Several ledger stones with
brick foundations
Several older iron gates



Crawford County Historic Resource

Field ID: CD-70
GNAHRGIS ID: 245826
County: Crawford
**Preliminary NR
Assessment:** May Meet
Status - Listed: Not Listed



261 Ray Rd.

Coordinates: 32.63783, -83.85941



Resource Type Building

Resource Use Residential: Single Family Dwelling

Date of Construction Circa 1910

Building Type New South Cottage

Structural System Balloon Frame

Style Folk Victorian

Roof Gable: multi
Hip

Exterior Cladding Log: Masonite Siding

Foundation Unknown

Porch Wrap-around

Windows Double Hung Sash: 2/2
Factory Sash

Chimney No Chimney Observed

Alterations Multiple New and Replacement Windows
Rear gabled ell addition on left side



Crawford County Historic Resource

Field ID: CD-71
GNAHRGIS ID: 245827
County: Crawford
Preliminary NR Assessment: May Meet
Status - Listed: Not Listed



Taylor's Mill Rd, .5 Mile South Ray Rd.

Coordinates: 32.62967, -83.86899



Resource Type Building

Resource Use Residential: Single Family Dwelling

Date of Construction 1910

Building Type Georgian Cottage

Structural System Balloon Frame

Style Folk Victorian

Roof Hip: Composition/ asphalt shingle

Exterior Cladding Prism synthetics:
Masonite siding

Foundation Unknown

Porch Verandah

Windows Factory Sash 1/1

Chimney No Chimney Observed

Alterations Rear Addition Appears to be Shed Addition



Crawford County Historic Resource

Field ID: CD-72
GNAHRGIS ID: 245828
County: Crawford
**Preliminary NR
Assessment:** May Meet
Status - Listed: Not Listed



Wesley Chapel and Cemetery
Corner of Taylor's Mill Rd. and Wesley Chapel Rd.

Coordinates: 32.62338, -83.87070



Resource Type Building

Resource Use Religious: Church
Funerary: Cemetery

Date of Construction Circa 1920

Building Type Bungalow: Front Gable

Structural System Balloon Frame

Style Craftsman

Roof Gable:Cross

Exterior Cladding Board and Batten: Novelty siding

Foundation Pier with Infill:Brick

Porch Portico

Windows Factory Sash 1/1

Chimney No Chimney Observed

Alterations Addition on the Right Rear Gable
Approximately 100 Graves
Oldest Grave - 1863



Crawford County Historic Resource

Field ID: CD-73
GNAHRGIS ID: 245829
County: Crawford
Preliminary NR Assessment: Not Eligible
Status - Listed: Not Listed



Former Spring Hill Church
Mule Creek Rd. 1.5 Mile E of Taylor's Mill Rd.

Coordinates: 32.66005,-83.83311



Resource Type Site

Resource Use Funerary: Cemetery

Date of Construction 1942

Common Names

≈ Number of Burials 100

Oldest Burial 1942

Burial Description CSA, WWII, Masons, Lady Masons

Cemetery Description No longer in Active Use
Remnants of Former Church on Grounds
Mostly Ledger Stones with Simple Markers\
Large Portion of Grave site is Overgrown



Crawford County Historic Resource

Field ID: CD-74
GNAHRGIS ID: 245831
County: Crawford
Preliminary NR Assessment: May Meet
Status - Listed: Not Listed



725 Bryant Dr.

Coordinates: 32.69099, -83.84776



Resource Type Building

Resource Use Residential: Single Family Dwelling

Date of Construction 1920

Building Type New South Cottage

Structural System Balloon Frame

Style Craftsman

Roof Gable:Cross
Hip

Exterior Cladding Wood: Weatherboard

Foundation Pier with Infill:Brick

Porch Wrap Around

Windows Double Hung Sash: 5/1

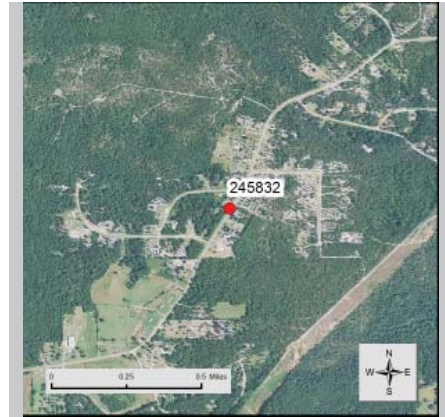
Chimney Lateral Interior
Surface: Brick

Alterations Shed Porch in Rear, Grows off of Rear gable



Crawford County Historic Resource

Field ID: CD-75
GNAHRGIS ID: 245832
County: Crawford
Preliminary NR Assessment: May Meet
Status - Listed: Not Listed



Jordan Rd, 3/4 Mile W of Gunter Mill Rd.

Coordinates: 32.68295, -83.80695



Resource Type Building

Resource Use Residential: Single Family Dwelling

Date of Construction Circa 1920

Building Type Central Hallway

Structural System Balloon Frame

Style No Academic Style

Roof Gable:Side

Exterior Cladding Wood: Weatherboard

Foundation Pier with Infill:Brick

Porch Verandah

Windows Factory Sash 9/9

Chimney Both Gable Ends
Surface: Brick

Alterations Shed Addition on Left
Rear
Ell Addition on Right Rear



Crawford County Historic Resource

Field ID: CD-76
GNAHRGIS ID: 245839
County: Crawford
**Preliminary NR
Assessment:** May Meet
Status - Listed: Not Listed



Jordan Chapel and Cemetery
1740 Giles Rd.

Coordinates: 32.66766, -83.804613



Resource Type Building
Site

Resource Use Religious: Church
Funerary: Cemetery

Date of Construction 1872, 1902 (Church)

Building Type

Structural System Balloon Frame

Style No Academic Style

Roof Gable:Front
Hip: Steep

Exterior Cladding Wood: Clapboard

Foundation Pier with Infill:Brick

Porch Verandah

Windows Double Hung Sash: 6/6

Chimney No Chimney Observed

Alterations Approximately 100 Graves
Oldest Grave 1862
Hardison, Jordan and Giles
Family Names



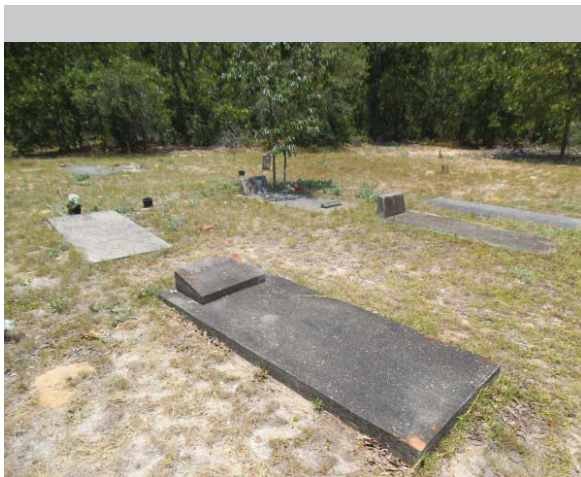
Crawford County Historic Resource

Field ID: CD-79
GNAHRGIS ID: 245843
County: Crawford
Preliminary NR Assessment: Not Eligible
Status - Listed: Not Listed



St. Marks CME Cemetery
End of St. Marks Church Rd.

Coordinates: 32.74761,-83.85640



Resource Type Site
Building

Resource Use Funerary: Cemetery
Religious: Church

Date of Construction 1960

Common Names

≈ Number of Burials 20

Oldest Burial 1960

Burial Description Simple Ledger Stones
Graves Face East

Cemetery Description Recent Graves, but
Unclear whether the
Church and Cemetery are
still in use.



Crawford County Historic Resource

Field ID: CD-80
GNAHRGIS ID: 245844
County: Crawford
**Preliminary NR
Assessment:** May Meet
Status - Listed: Not Listed



Across from 656 Pottery Rd

Coordinates: 32.74648, -83.85245



Resource Type Building

Resource Use Residential: Single Family Dwelling

Date of Construction Circa 1930

Building Type Bungalow: Cross Gable

Structural System Balloon Frame

Style Craftsman

Roof Gable: Cross

Exterior Cladding Wood: Clapboard

Foundation Pier with Infill: Brick

Porch Portico
Porte-cochere

Windows Double Hung Sash: 3/1

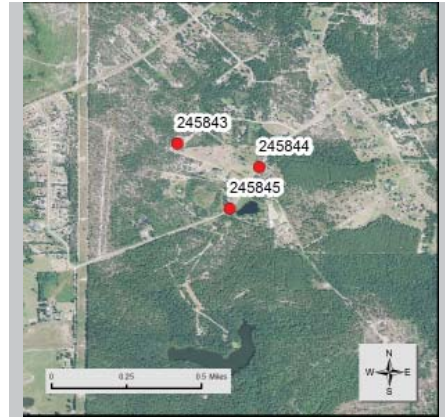
Chimney Off-center w/in Roof
Surface: Brick

Alterations Rear Shed Addition
Left Side Gable Addition



Crawford County Historic Resource

Field ID: CD-81
GNAHRGIS ID: 245845
County: Crawford
Preliminary NR Assessment: May Meet
Status - Listed: Not Listed



Across from 470 Pottery Rd,

Coordinates: 32.74447, -83.85387



Resource Type Building

Resource Use Residential: Single Family Dwelling

Date of Construction Circa 1930

Building Type Bungalow: Side Gable

Structural System Balloon Frame

Style Craftsman

Roof Gable:Side

Exterior Cladding Stucco

Foundation Unknown

Porch Wrap Around

Windows Double Hung Sash: 3/1

Chimney Off-center Within Roof Surface: Stuccoed

Alterations Two Windows Aren't Craftsman
No Evident Additions



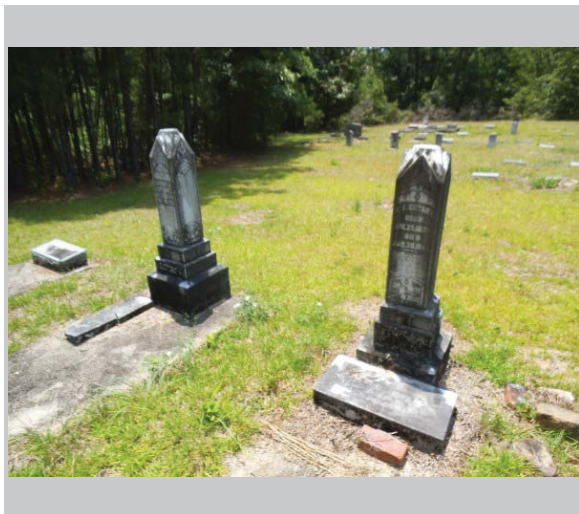
Crawford County Historic Resource

Field ID: CD-82
GNAHRGIS ID: 245846
County: Crawford
Preliminary NR Assessment: Not Eligible
Status - Listed: Not Listed



End of Unnamed rd. Off Causey rd. 1 Mile S of Hamlin

Coordinates: 32.72221,-83.92373



Resource Type Site

Resource Use Funerary: Cemetery

Date of Construction 1849

Common Names Hamiln, Beecham, Giles, Bryant

≈ Number of Burials 100

Oldest Burial 1868

Burial Description Several Confederate

Cemetery Description Mix of Statues, Ledger Stones, and Headstones
Graves Face East
Active Use Cemetery



Crawford County Historic Resource

Field ID: CD-83
GNAHRGIS ID: 245847
County: Crawford
Preliminary NR Assessment: Not Eligible
Status - Listed: Not Listed



Intersection of Rowell Rd and Jackson Rd

Coordinates: 32.68309,-83.95254



Resource Type Site

Resource Use Funerary: Cemetery

Date of Construction 1941

Common Names Rowell and Chapman

≈ Number of Burials 15

Oldest Burial 1941

Burial Description Rowell and Chapman Families

Cemetery Description Active Use
Mostly Ledger Stones



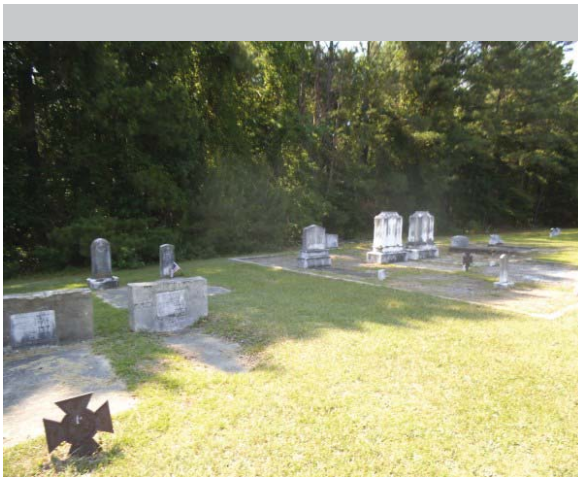
Crawford County Historic Resource

Field ID: CD-84
GNAHRGIS ID: 245848
County: Crawford
Preliminary NR Assessment: Not Eligible
Status - Listed: Not Listed



New Haven Independent Baptist Cemetery

Coordinates: 32.72207,-83.99866



Resource Type Site

Resource Use Funerary: Cemetery

Date of Construction 1846

Common Names

≈ Number of Burials 175

Oldest Burial 1846

Burial Description Lot of Confederate Woodsman of the World

Cemetery Description Active Use
Non Contributing Church
Several Iron and Metal Fenced Sections
Several Obelisks and Sculptural Markers
Several Newer Markers for Older Graves



Crawford County Historic Resource

Field ID: CD-85
GNAHRGIS ID: 245857
County: Crawford
Preliminary NR Assessment: Eligible
Status - Listed: Not Listed



2262 Highway 80

Coordinates: 32.73688, -83.98190



Resource Type Building

Resource Use Residential: Single Family Dwelling

Date of Construction Circa 1920

Building Type Georgian Cottage

Structural System Balloon Frame

Style Folk Victorian

Roof Hip

Exterior Cladding Wood: Weatherboard

Foundation Unknown

Porch Wrap Around

Windows Factory Sash 6/6

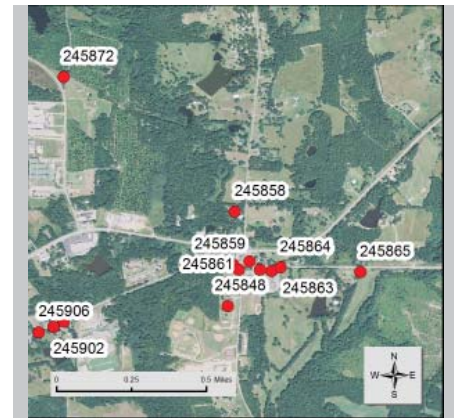
Chimney Lateral Interior: Brick

Alterations Addition to the Right Side



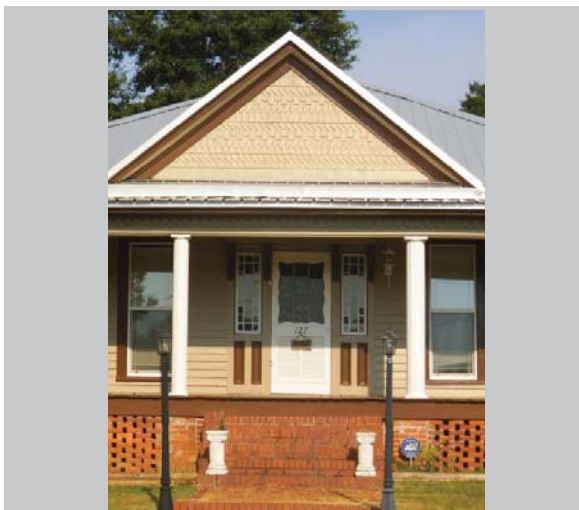
Crawford County Historic Resource

Field ID: CD-86
GNAHRGIS ID: 245858
County: Crawford
Preliminary NR Assessment: May Meet
Status - Listed: Not Listed



127 Fairplay Hill Rd.

Coordinates: 32.72665, -83.99832



Resource Type Building

Resource Use Residential: Single Family Dwelling

Date of Construction Circa 1920

Building Type Bungalow: Hip

Structural System Balloon Frame

Style Craftsman

Roof Hip

Exterior Cladding Wood: Weatherboard
Board and Batten: Novelty

Foundation Pier with Infill: Brick

Porch Verandah

Windows Factory Sash 1/1

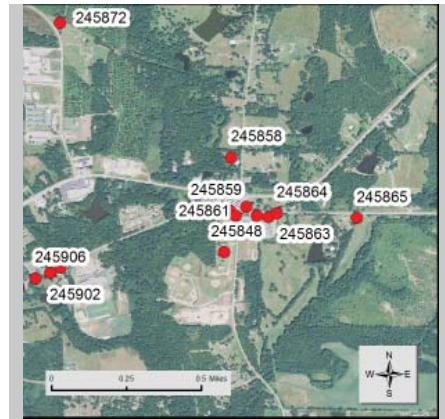
Chimney Lateral Exterior: Brick

Alterations Multiple Material Changes



Crawford County Historic Resource

Field ID: CD-87
GNAHRGIS ID: 245859
County: Crawford
Preliminary NR Assessment: Appears to meet
Status - Listed: Not Listed



Old Knoxville Courthouse
Intersection of Highway 80 and Fairplay Hill Rd.

Coordinates: 32.65037, -82.50656



Resource Type Building

Resource Use Government: Courthouse

Date of Construction 1852

Building Type N/A

Structural System Brick Bearing

Style Greek Revival

Roof Gable: Truncated Hip

Exterior Cladding Wood: Clapboard
Brick: Stucco

Foundation Unknown

Porch Recessed Entry

Windows Factory Sash

Chimney Lateral Interior: Brick

Alterations Modern Windows



Crawford County Historic Resource

Field ID: CD-88
GNAHRGIS ID: 245860
County: Crawford
Preliminary NR Assessment: May Meet
Status - Listed: Not Listed



840 Highway 42

Coordinates: 32.72383, -83.99812



Resource Type Building

Resource Use Residential: Single Family Dwelling

Date of Construction Circa 1910

Building Type Central Hallway

Structural System Balloon Frame

Style No Academic Style

Roof Gable: Turncated Hip

Exterior Cladding Prism Synthetics: Vinyl

Foundation Unknown

Porch Verandah

Windows Factory Sash 1/1

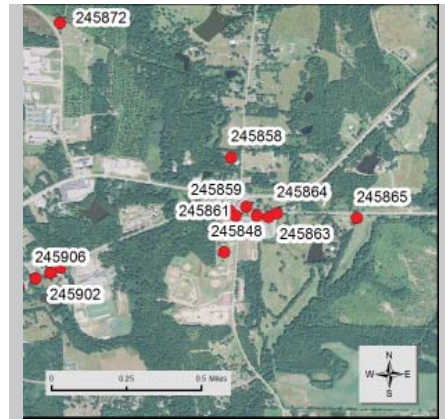
Chimney Gabled-end, Interior: Brick

Alterations Right Side of Porch Enclosed
Gabled Ell Addition at Right Rear



Crawford County Historic Resource

Field ID: CD-87
GNAHRGIS ID: 245859
County: Crawford
Preliminary NR Assessment: Appears to meet
Status - Listed: Not Listed



Old Knoxville Courthouse
Intersection of Highway 80 and Fairplay Hill Rd.

Coordinates: 32.65037, -82.50656



Resource Type Building

Resource Use Government: Courthouse

Date of Construction 1852

Building Type N/A

Structural System Brick Bearing

Style Greek Revival

Roof Gable: Truncated Hip

Exterior Cladding Wood: Clapboard
Brick: Stucco

Foundation Unknown

Porch Recessed Entry

Windows Factory Sash

Chimney Lateral Interior: Brick

Alterations Modern Windows



Crawford County Historic Resource

Field ID: CD-88
GNAHRGIS ID: 245860
County: Crawford
**Preliminary NR
Assessment:** May Meet
Status - Listed: Not Listed



840 Highway 42

Coordinates: 32.72383, -83.99812



Resource Type Building

Resource Use Residential: Single Family Dwelling

Date of Construction Circa 1910

Building Type Central Hallway

Structural System Balloon Frame

Style No Academic Style

Roof Gable: Turncated Hip

Exterior Cladding Prism Synthetics: Vinyl

Foundation Unknown

Porch Verandah

Windows Factory Sash 1/1

Chimney Gabled-end, Interior: Brick

Alterations Right Side of Porch Enclosed
Gabled Ell Addition at Right Rear



Crawford County Historic Resource

Field ID: CD-89
GNAHRGIS ID: 245861
County: Crawford
Preliminary NR Assessment: May Meet
Status - Listed: Not Listed



Coordinates: 32.65037, -82.50656



Resource Type Building

Resource Use Residential: Single Family Dwelling

Date of Construction Circa 1900

Building Type Gabled Ell Cottage

Structural System Balloon Frame

Style No Academic Style

Roof Gable: Cross

Exterior Cladding Wood: Weatherboard

Foundation Pier: Brick

Porch Verandah

Windows Double Hung Sash 2/2

Chimney Gabled-end, exterior: Brick

Alterations Hipped Addition at Rear
Vinyl Exterior and Asphalt Roof
Functions as a Museum



Crawford County Historic Resource

Field ID: CD-90
GNAHRGIS ID: 245862
County: Crawford
Preliminary NR Assessment: Eligible
Status - Listed: Not Listed



The Georgia Post
Across From 87 Highway 42

Coordinates: 32.72384, -83.99709



Resource Type Building

Resource Use Vacant

Date of Construction 1928

Building Type Single Pen: Rectangular

Structural System Balloon Frame

Style No Academic Style

Roof Gable: Front

Exterior Cladding Wood: Weatherboard

Foundation Pier: Brick

Porch No Porch

Windows Double Hung Sash: 6/6

Chimney Off-center Within Roof
Surface: Brick

Alterations Door may have been
Replaced
Originally the "Georgia
Post" now vacant



Crawford County Historic Resource

Field ID: CD-91
GNAHRGIS ID: 245863
County: Crawford
Preliminary NR Assessment: May Meet
Status - Listed: Not Listed



Across From Crawford County Courthouse on Hwy 42

Coordinates: 32.65037, -82.50656



Resource Type Building

Resource Use Residential: Single Family Dwelling

Date of Construction Circa 1900

Building Type Central Hallway

Structural System Balloon Frame

Style No Academic Style

Roof Gable:Side

Exterior Cladding Prism Synthetics:
Tarpaper

Foundation Continuous: Concrete

Porch Verandah

Windows Factory Sash 1/1

Chimney Gable-end, exterior: Brick

Alterations New CMU foundation
Mid century metal awnings
Gabled addition rear right



Crawford County Historic Resource

Field ID: CD-92
GNAHRGIS ID: 245864
County: Crawford
Preliminary NR Assessment: Appears to meet
Status - Listed: Not Listed



Old Jail
Highway 42 .25 Mile E of Old Courthouse

Coordinates: 32.72395, -83.99612



Resource Type Building

Resource Use Government: Jail

Date of Construction 1843

Building Type Government: Jail

Structural System Brick Bearing

Style No Academic Style

Roof Hip

Exterior Cladding Brick: Common

Foundation Continuous: Stone

Porch No Porch

Windows Factory Sash 1/1

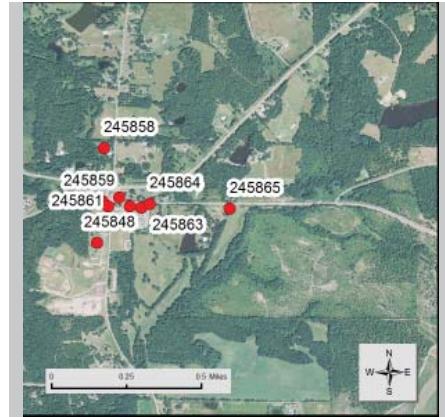
Chimney Off-center Within Roof
Surface: Brick

Alterations Newer Metal Windows
Vacant



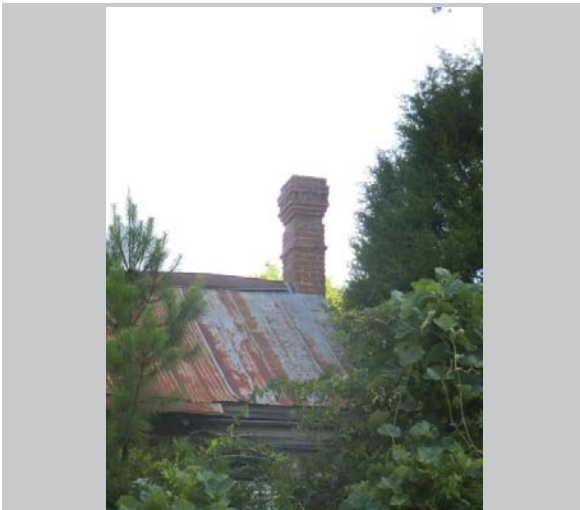
Crawford County Historic Resource

Field ID: CD-93
GNAHRGIS ID: 245865
County: Crawford
Preliminary NR Assessment: May Meet
Status - Listed: Not Listed



Highway 42 .5 Mile E of Crawford Courthouse

Coordinates: 32.72372, -83.99226



Resource Type Building

Resource Use Residential: Single Family Dwelling

Date of Construction Circa 1890

Building Type Unknown

Structural System Balloon Frame

Style No Academic Style

Roof Gable:Side

Exterior Cladding Wood: Weatherboard

Foundation Unknown

Porch No Porch

Windows Unknown

Chimney Gable-end, exterior: Brick

Alterations House Mostly Obscured by Overgrown Vegetation



Crawford County Historic Resource

Field ID: CD- 94
GNAHRGIS ID: 245867
County: Crawford
**Preliminary NR
Assessment:** May Meet
Status - Listed: Not Listed



1924 Highway 341

Coordinates: 32.65037, -82.50656



Resource Type Building

Resource Use Residential: Single Family Dwelling

Date of Construction Circa 1930

Building Type Bungalow: Front Gable

Structural System Balloon Frame

Style Craftsman

Roof Gable: Front

Exterior Cladding Wood: Weatherboard

Foundation Pier with Infill: Brick

Porch Verandah

Windows Double Hung Sash 8/1

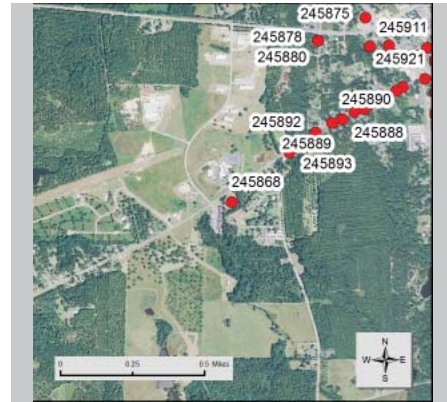
Chimney Off-center Within Roof Surface: Brick

Alterations Enclosed Porch



Crawford County Historic Resource

Field ID: CD-95
GNAHRGIS ID: 245868
County: Crawford
Preliminary NR Assessment: Not Eligible
Status - Listed: Not Listed



Church and Cemetery
Highway 128 .5 Mile W of Highway 341

Coordinates: 32.71287,-84.02067



Resource Type Site

Resource Use Funerary: Cemetery
Religious: Church

Date of Construction 1917

Common Names

≈ Number of Burials 150

Oldest Burial 1917

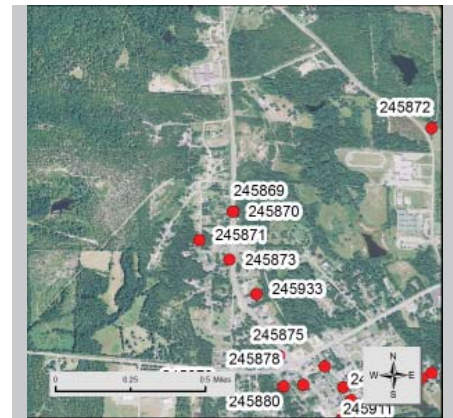
Burial Description Mostly Ledger Stones
Few Headstones

Cemetery Description Non Contributing Church
Fence Running Down
Center of Cemetery
(Possibly denoting newer
section)



Crawford County Historic Resource

Field ID: CD-96
GNAHRGIS ID: 245869
County: Crawford
Preliminary NR Assessment: May Meet
Status - Listed: Not Listed



541 Highway 341

Coordinates: 32.72912, -84.01613

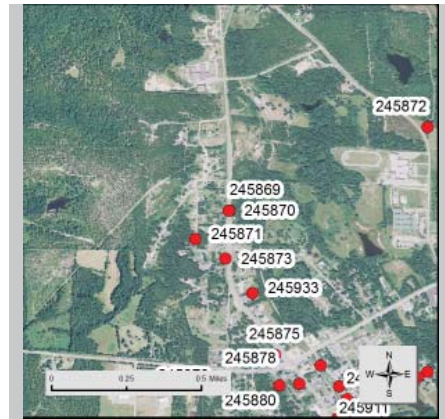


- Resource Type** Building
- Resource Use** Residential: Single Family Dwelling
- Date of Construction** Circa 1920
- Building Type** Saddlebag: 1 Door
- Structural System** Balloon Frame
- Style** No Academic Style
- Roof** Gable:Side
- Exterior Cladding** Wood: Weatherboard
- Foundation** Unknown
- Porch** Verandah
- Windows** Double Hung Sash: 6/6
- Chimney** Center:Brick
- Alterations** May originally has 2 doors
Gabled addition at rear
Chimney on rear addition



Crawford County Historic Resource

Field ID: CD-97
GNAHRGIS ID: 245870
County: Crawford
Preliminary NR Assessment: May Meet
Status - Listed: Not Listed



543 Highway 341

Coordinates: 32.72913, -84.01617



Resource Type Building

Resource Use Residential: Single Family Dwelling

Date of Construction Circa 1930

Building Type Bungalow: Front Gable

Structural System Balloon Frame

Style Craftsman

Roof Gable: Front

Exterior Cladding Prism Synthetics:
Masonite Siding

Foundation Unknown

Porch Verandah

Windows Factory Sash 1/1

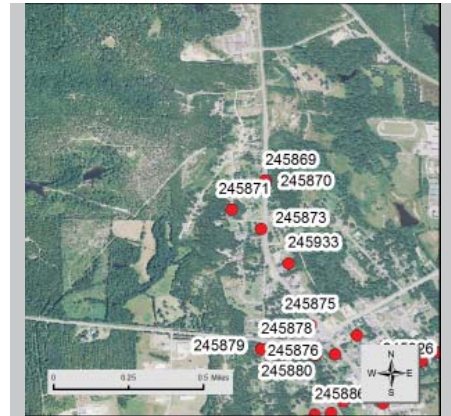
Chimney Off-center Within Roof
Surface: Brick

Alterations Metal awnings on porch
eaves and windows



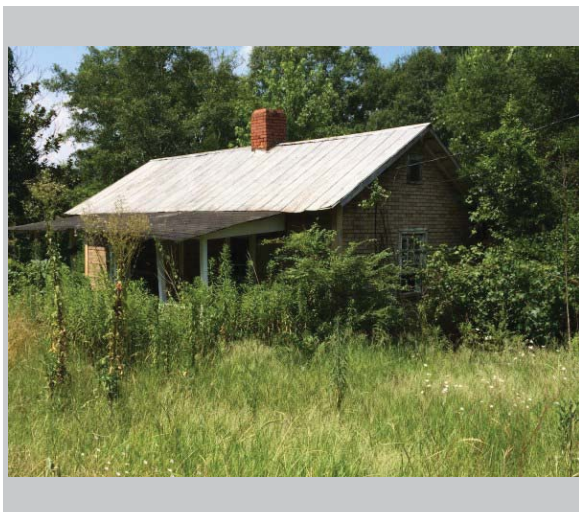
Crawford County Historic Resource

Field ID: CD- 98
GNAHRGIS ID: 245871
County: Crawford
Preliminary NR Assessment: May Meet
Status - Listed: Not Listed



Slade Dr. .25 Mile W of Highway 42

Coordinates: 32.72773, -84.01777



Resource Type Building

Resource Use Residential: Single Family Dwelling

Date of Construction Circa 1900

Building Type Saddlebag: 1 Door

Structural System Balloon Frame

Style No Academic Style

Roof Gable:Side

Exterior Cladding Prism Synthetics:
Tarpaper

Foundation Unknown

Porch Verandah

Windows Double Hung Sash: 6/6

Chimney Center: Brick

Alterations Gabled Addition at Rear
Multiple Material Changes
May Have Originally Had 2
Doors



Crawford County Historic Resource

Field ID: CD-99
GNAHRGIS ID: 245872
County: Crawford
Preliminary NR Assessment: Not Eligible
Status - Listed: Not Listed



Lowe Cemetery
510 Lowe Rd.

Coordinates: 32.73316,-84.00659



Resource Type Site

Resource Use Funerary: Cemetery

Date of Construction 1880

Common Names Lowe

≈ Number of Burials 20

Oldest Burial 1880

Burial Description Lowe Family
Woodsman of the World

Cemetery Description One Decorative Iron Fence
One Modern Chain Link
Active Use Cemetery



Crawford County Historic Resource

Field ID: CD-100
GNAHRGIS ID: 245873
County: Crawford
Preliminary NR Assessment: May meet
Status - Listed: Not Listed



Next to 651 Highway 341

Coordinates: 32.65037, -82.50656



Resource Type Building

Resource Use Residential: Single Family Dwelling

Date of Construction Circa 1930

Building Type Bungalow: Front Gable

Structural System Balloon Frame

Style Craftsman

Roof Gable: Front

Exterior Cladding Wood: Weatherboard

Foundation Pier: Brick

Porch Verandah

Windows Double Hung Sash: 6/6

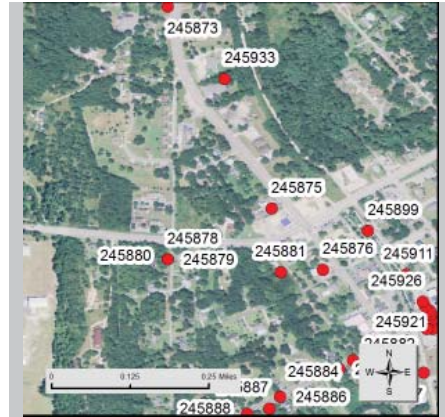
Chimney Off-center Within Roof Surface: Brick

Alterations None Observed



Crawford County Historic Resource

Field ID: CD-101
GNAHRGIS ID: 245875
County: Crawford
Preliminary NR Assessment: Eligible
Status - Listed: Not Listed



Highway 341 just N of Highway 80

Coordinates: 32.72214, -84.01395



Resource Type Building

Resource Use Residential: Single Family Dwelling

Date of Construction Circa 1920

Building Type Bungalow: Hip

Structural System Balloon Frame

Style Craftsman

Roof Hip

Exterior Cladding Wood: Weatherboard

Foundation Pier with Infill: Brick

Porch Wrap Around

Windows Double Hung Sash 8/1

Chimney Off-center Within Roof Surface: Brick 2

Alterations Functions as a Restaurant



Crawford County Historic Resource

Field ID: CD-102
GNAHRGIS ID: 245876
County: Crawford
Preliminary NR Assessment: May Meet
Status - Listed: Not Listed



Highway 341 S of Highway 80

Coordinates: 32.72073, -84.01277



Resource Type Building

Resource Use Residential: Single Family Dwelling

Date of Construction Circa 1920

Building Type Bungalow: Front Gable

Structural System Balloon Frame

Style Craftsman

Roof Gable: Front

Exterior Cladding Wood: Weatherboard

Foundation Pier with Infill: Brick

Porch Stoop

Windows Double Hung Sash 4/1

Chimney Off-center Within Roof Surface: Brick

Alterations Modern CMU's on Porch



Crawford County Historic Resource

Field ID: CD-103
GNAHRGIS ID: 245878
County: Crawford
**Preliminary NR
Assessment:** May Meet
Status - Listed: Not Listed



Across From 127 W Crusselle

Coordinates: 32.72097, -84.01634



Resource Type Building

Resource Use Residential: Single Family Dwelling

Date of Construction Circa 1920

Building Type Bungalow: Cross Gable

Structural System Balloon Frame

Style Craftsman

Roof Hip

Exterior Cladding Wood: Weatherboard

Foundation Pier: Brick

Porch Portico

Windows Double Hung Sash 6/1

Chimney Lateral Exterior: Brick

Alterations Addition to Left Side



Crawford County Historic Resource

Field ID: CD-104
GNAHRGIS ID: 245879
County: Crawford
Preliminary NR Assessment: May Meet
Status - Listed: Not Listed



127 W Crusselle

Coordinates: 32.65037, -82.50656



Resource Type Building

Resource Use Residential: Single Family Dwelling

Date of Construction Circa 1910

Building Type New South Cottage

Structural System Balloon Frame

Style No Academic Style

Roof Hip

Exterior Cladding Wood: Weatherboard
Board and Batten: Novelty

Foundation Pier with Infill: Brick

Porch Wrap Around

Windows Double Hung Sash 3/1

Chimney Lateral Interior: Brick

Alterations Porch Base now CMU



Crawford County Historic Resource

Field ID: CD-105
GNAHRGIS ID: 245880
County: Johnson
**Preliminary NR
Assessment:** May Meet
Status - Listed: Not Listed



167 W Crusselle

Coordinates: 32.72097, -84.01634

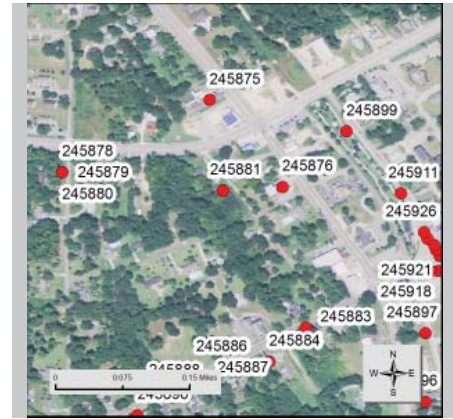


- Resource Type** Building
- Resource Use** Residential: Single Family Dwelling
- Date of Construction** Circa 1920
- Building Type** Georgian
- Structural System** Balloon Frame
- Style** Craftsman
- Roof** Gable: Dutch
- Exterior Cladding** Wood: Weatherboard
- Foundation** Pier with Infill: Brick
- Porch** Verandah
- Windows** Double Hung Sash: 6/6
- Chimney** Lateral Interior 2: Brick
- Alterations** Left Side of Porch Enclosed
Modern Metal "Picket" Fence



Crawford County Historic Resource

Field ID: CD-106
GNAHRGIS ID: 245881
County: Crawford
Preliminary NR Assessment: May Meet
Status - Listed: Not Listed



55 Tanner Ln.

Coordinates: 32.72067 -84.01373



Resource Type Building

Resource Use Residential: Single Family Dwelling

Date of Construction Circa 1930

Building Type No Academic Type

Structural System Balloon Frame

Style Craftsman

Roof Gable: Stepped

Exterior Cladding Wood: Weatherboard

Foundation Continuous: Concrete

Porch Portico

Windows Double Hung Sash: 6/6

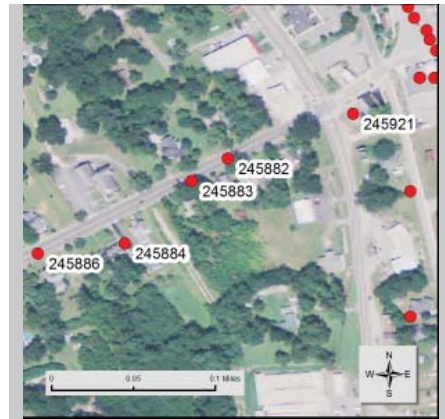
Chimney No Chimney Observed

Alterations Gabled Ell Addition at Rear



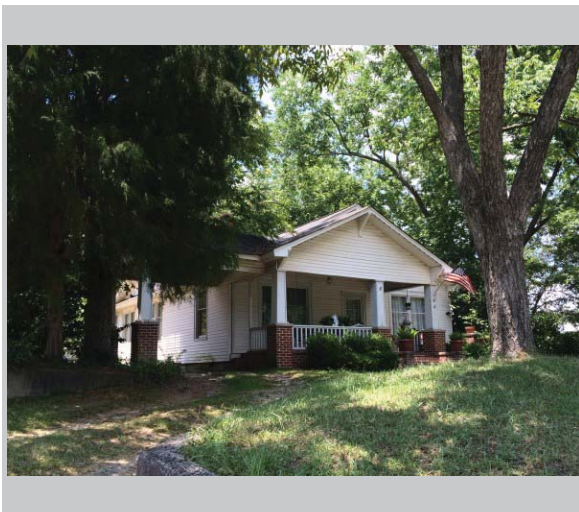
Crawford County Historic Resource

Field ID: CD-107
GNAHRGIS ID: 245882
County: Crawford
**Preliminary NR
Assessment:** May Meet
Status - Listed: Not Listed



44 Highway 341

Coordinates: 32.71864, -84.01207



Resource Type Building

Resource Use Residential: Single Family Dwelling

Date of Construction Circa 1930

Building Type Bungalow: Front Gable

Structural System Balloon Frame

Style Craftsman

Roof Gable:Side

Exterior Cladding Prism Synthetics: Vinyl

Foundation Pier with Infill:Brick

Porch Verandah
Porte-cochere

Windows Factory Sash 1/1

Chimney Multiple Random: Brick

Alterations None Observed



Crawford County Historic Resource

Field ID: CD-108
GNAHRGIS ID: 245883
County: Crawford
Preliminary NR Assessment: May Meet
Status - Listed: Not Listed



65 Highway 341

Coordinates: 32.65037, -82.50656



Resource Type Building

Resource Use Residential: Single Family Dwelling

Date of Construction Circa 1900

Building Type Queen Anne Cottage

Structural System Balloon Frame

Style Folk Victorian

Roof Hip

Exterior Cladding Wood: Weatherboard
Board and Batten: Novelty

Foundation Pier with Infill: Brick

Porch Wrap Around

Windows Single Hung Sash n#26

Chimney Center: Brick

Alterations None Observed



Crawford County Historic Resource

Field ID: CD-109
GNAHRGIS ID: 245884
County: Crawford
Preliminary NR Assessment: May Meet
Status - Listed: Not Listed



115 Highway 341

Coordinates: 32.717889, -84.01298



Resource Type Building

Resource Use Residential: Single Family Dwelling

Date of Construction 1910

Building Type Georgian Cottage

Structural System Balloon Frame

Style Craftsman

Roof Hip

Exterior Cladding Board and Batten: Novelty Siding

Foundation Unknown

Porch Portico

Windows Factory Sash 6/6

Chimney Lateral Interior 2:Brick

Alterations Columns Have Been Replaced, Now Vinyl



Crawford County Historic Resource

Field ID: CD-110
GNAHRGIS ID: 245886
County: Crawford
**Preliminary NR
Assessment:** May Meet
Status - Listed: Not Listed



160 West Agency St.

Coordinates: 32.71780, -84.01375



Resource Type Building

Resource Use Residential: Single Family Dwelling

Date of Construction Circa 1910

Building Type Georgian Cottage

Structural System Unknown

Style Folk Victorian

Roof Gable:Side

Exterior Cladding Wood: Weatherboard
Board and Batten: Vertical

Foundation Pier with Infill:Brick

Porch Verandah

Windows Double Hung Sash 2/2

Chimney No Chimney Observed

Alterations Metal Awning Appear to be mid 20th century



Crawford County Historic Resource

Field ID: CD-111
GNAHRGIS ID: 245887
County: Crawford
**Preliminary NR
Assessment:** May Meet
Status - Listed: Not Listed



177 West Agency St.

Coordinates: 32.71753, -84.01400



Resource Type Building

Resource Use Residential: Single Family Dwelling

Date of Construction Circa 1900

Building Type Queen Ann

Structural System Balloon Frame

Style Folk Victorian

Roof Gable: Complex

Exterior Cladding Wood: Weatherboard
Board and Batten: Novelty

Foundation Unknown

Porch Wrap Around

Windows Double Hung Sash 4/4

Chimney No Chimney Observed

Alterations None Observed



Crawford County Historic Resource

Field ID: CD-112
GNAHRGIS ID: 245888
County: Crawford
Preliminary NR Assessment: Not Eligible
Status - Listed: Not Listed



226 Agency St.

Coordinates: 32.71741, -84.01451



Resource Type Building

Resource Use Residential: Single Family Dwelling

Date of Construction 1892

Building Type Georgian Cottage

Structural System Balloon Frame

Style Folk Victorian

Roof Gable:Side

Exterior Cladding Wood: Weatherboard

Foundation Pier with Infill:Brick

Porch

Windows Double Hung Sash: 6/6

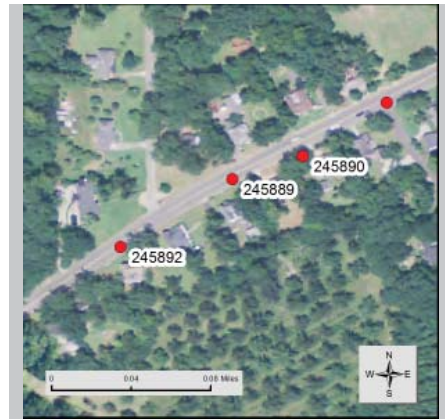
Chimney No Chimney Observed

Alterations Several Additions at Rear Enclosed Porch



Crawford County Historic Resource

Field ID: CD-113
GNAHRGIS ID: 245889
County: Crawford
**Preliminary NR
Assessment:** May Meet
Status - Listed: Not Listed



282 West Agency St.

Coordinates: 32.71685 -84.01563



Resource Type Building

Resource Use Residential: Single Family Dwelling

Date of Construction Circa 1900

Building Type Queen Anne

Structural System Balloon Frame

Style No Academic Style

Roof Gable: Complex

Exterior Cladding Prism Synthetics: Vinyl

Foundation Unknown

Porch Wrap Around

Windows Double Hung Sash 4/4

Chimney No Chimney Observed

Alterations Replacement siding



Crawford County Historic Resource

Field ID: CD-114
GNAHRGIS ID: 245890
County: Crawford
Preliminary NR Assessment: Not Eligible
Status - Listed: Not Listed



254 West Agency St.

Coordinates: 32.71702, -84.01512



Resource Type Building

Resource Use Residential: Single Family Dwelling

Date of Construction Circa 1925

Building Type Gabled ell cottage

Structural System Balloon Frame

Style Craftsman

Roof Gable: Complex

Exterior Cladding Wood: Clapboard

Foundation Unknown

Porch Wrap Around

Windows Double Hung Sash 2/2

Chimney No Chimney Observed

Alterations Large second story addition at rear



Crawford County Historic Resource

Field ID: CD-115
GNAHRGIS ID: 245892
County: Crawford
**Preliminary NR
Assessment:** May Meet
Status - Listed: Not Listed



355 W Agency St.

Coordinates: 32.71635, -84.01644



Resource Type Building

Resource Use Residential: Single Family Dwelling

Date of Construction Circa 1900

Building Type Gabled Ell Cottage

Structural System Balloon Frame

Style No Academic Style

Roof Gable: Cross

Exterior Cladding Prism Synthetics: Vinyl

Foundation Pier with Infill: Brick

Porch Verandah

Windows Double Hung Sash 4/1

Chimney Off-center, Ridgeline
Gable-end, Exterior: Brick

Alterations Porch Posts Appear to be Replacements
Gabled Addition at Rear



Crawford County Historic Resource

Field ID: CD-116
GNAHRGIS ID: 245893
County: Crawford
**Preliminary NR
Assessment:** May Meet
Status - Listed: Not Listed



W Agency St. Across from 451

Coordinates: 32.71537, -84.01778



Resource Type Building

Resource Use Residential: Single Family Dwelling

Date of Construction Circa 1910

Building Type Gabled Ell Cottage

Structural System Balloon Frame

Style Folk Victorian

Roof Gable: Cross

Exterior Cladding Wood: Clapboard

Foundation Pier with Infill: Brick

Porch Verandah

Windows Double Hung Sash: 6/6
Jalosie

Chimney Gabled-end, exterior
Center: Brick

Alterations Gabled Addition in Rear
New Door



Crawford County Historic Resource

Field ID: CD-117
GNAHRGIS ID: 245895
County: Crawford
Preliminary NR Assessment: Does not meet
Status - Listed: Not Listed



Roberta Cemetery
S Matthews .5 Mile Sof Agency St.

Coordinates: 32.71072,-84.00793



Resource Type Site

Resource Use Funerary: Cemetery

Date of Construction 1861

Common Names

≈ Number of Burials 450

Oldest Burial 1861

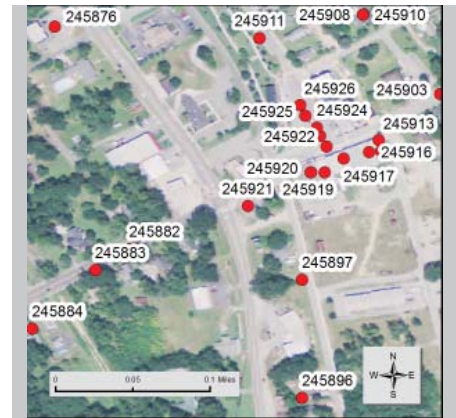
Burial Description Woodsmen of the World
Confederate Soldiers
Masons

Cemetery Description Active Use
Mix of Ledger Stones,
Headstones, and Older
Sculptural Markers
Graves Face East
Road System Within
Cemetery



Crawford County Historic Resource

Field ID: CD-118
GNAHRGIS ID: 245896
County: Crawford
Preliminary NR Assessment: May Meet
Status - Listed: Not Listed



Across from 93 S. Matthew's St.

Coordinates: 32.7172, -84.01045



Resource Type Building

Resource Use Residential: Single Family Dwelling

Date of Construction Circa 1920

Building Type Bungalow: Hip

Structural System Balloon Frame

Style Craftsman

Roof Hip

Exterior Cladding Wood: Weatherboard

Foundation Pier with Infill: Brick

Porch Verandah

Windows Double Hung Sash: 6/6

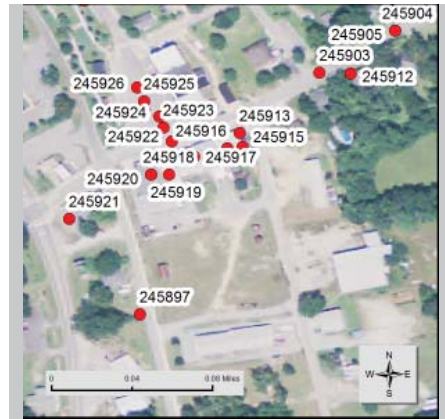
Chimney Off-center Within Roof Surface: Brick

Alterations Carport Addition on Left
Addition in Rear



Crawford County Historic Resource

Field ID: CD-119
GNAHRGIS ID: 245897
County: Crawford
Preliminary NR Assessment: May be Eligible
Status - Listed: Not Listed



50 South Matthews St.

Coordinates: 32.71835, -84.01045



Resource Type Building

Resource Use Residential: Single Family Dwelling

Date of Construction Circa 1900

Building Type Bungalow: hip

Structural System Platform

Style Craftsman

Roof Gable:Hip

Exterior Cladding Wood: Clapboard

Foundation Unknown

Porch Verandah

Windows Double Hung Sash: 9/6

Chimney lateral Interior: Brick

Alterations replaced windows



Crawford County Historic Resource

Field ID: CD-120
GNAHRGIS ID: 245899
County: Crawford
Preliminary NR Assessment: May Be Eligible
Status - Listed: Not Listed



170 Write Avenue

Coordinates: 32.72163, -84.01173



Resource Type Building

Resource Use Commercial: law office

Date of Construction Circa 1910

Building Type Bungalow: cross gable

Structural System Platform

Style Craftsman

Roof Gable:Front

Exterior Cladding Wood: Clapboard

Foundation Pier :Brick

Porch Wrap Around

Windows Double Hung Sash: 4/1

Chimney Center Ridgeline: Brick

Alterations right porch elevation enclosed
rear shed addition



Crawford County Historic Resource

Field ID: CD-121
GNAHRGIS ID: 245900
County: Crawford
Preliminary NR Assessment: May be Eligible
Status - Listed: Not Listed



next to 296 East Agency St.

Coordinates: 32.72132, -84.00657



Resource Type Building

Resource Use Residential: Single Family Dwelling

Date of Construction Circa 1940

Building Type Bungalow: front gable

Structural System Platform

Style Craftsman

Roof Gable:Front

Exterior Cladding masonite

Foundation Pier: Brick

Porch Verandah

Windows Double Hung Sash: 4/4

Chimney Off-center Within Roof Surface: Brick

Alterations rear gable addition



Crawford County Historic Resource

Field ID: CD-122
GNAHRGIS ID: 245901
County: Crawford
Preliminary NR Assessment: May meet
Status - Listed: Not Listed



296 East Agency St.

Coordinates: 32.72107, -84.00706



Resource Type Building

Resource Use Residential: Single Family Dwelling

Date of Construction Circa 1890

Building Type Queen Anne Cottage

Structural System Balloon Frame

Style Folk Victorian

Roof Complex

Exterior Cladding Wood: Clapboard

Foundation Pier with Infill: Brick

Porch Verandah

Windows Double Hung Sash: 6/9

Chimney Lateral Interior(2): Brick

Alterations Several Rear Additions:
gabled add w/ chimney
enclosed screen porch
non covered porch



Crawford County Historic Resource

Field ID: CD-123
GNAHRGIS ID: 245902
County: Crawford
Preliminary NR Assessment: May Be Eligible
Status - Listed: Not Listed



393 East Agency St.

Coordinates: 32.72107, -84.00706



Resource Type Building

Resource Use Residential: Single Family Dwelling

Date of Construction Circa 1920

Building Type Gabled ell

Structural System Platform

Style No Academic Style

Roof Gable:Cross

Exterior Cladding Vinyl

Foundation Pier with Infill:Brick

Porch Verandah

Windows Factory Sash: 1/1

Chimney Center (2): Brick

Alterations Replacement Windows
Replacement Front Door



Crawford County Historic Resource

Field ID: CD-124
GNAHRGIS ID: 245903
County: Crawford
Preliminary NR Assessment: May Meet
Status - Listed: Not Listed



155 East Agency St

Coordinates: 32.720095, -84.009155



Resource Type Building

Resource Use Residential: Single Family Dwelling

Date of Construction Circa 1890

Building Type Gabled ell

Structural System Platform frame

Style No Academic Style

Roof Gable:cross

Exterior Cladding Wood: clapboard

Foundation Pier with Infill:Brick

Porch Verandah

Windows Double Hung Sash: 9/6 9/9

Chimney None observed

Alterations Rear gable addition
Side Shed addition
Screened porch



Crawford County Historic Resource

Field ID: CD-125
GNAHRGIS ID: 245904
County: Crawford
Preliminary NR Assessment: May Be Eligible
Status - Listed: Not Listed



175 East Agency St.

Coordinates: 32.72040, -84.00861



Resource Type Building

Resource Use Residential: Single Family Dwelling

Date of Construction Circa 1900

Building Type Georgian Cottage

Structural System Platform

Style Folk Victorian

Roof Gable:Side

Exterior Cladding Wood: Weatherboard

Foundation Pier with Infill:Brick

Porch Verandah

Windows Double Hung Sash: 6/6
Jalousie

Chimney Off-center Within Roof
Surface: Brick

Alterations Enclosed Verandah
Replacement Mat
Addition
Enclosed



Crawford County Historic Resource

Field ID: CD-126
GNAHRGIS ID: 245905
County: Crawford
Preliminary NR Assessment: May Be Eligible
Status - Listed: Not Listed



195 East Agency St

Coordinates: 32.72040, -8400861



Resource Type Building

Resource Use Residential: Single Family Dwelling

Date of Construction Circa 1890

Building Type Georgian Cottage

Structural System Balloon Frame

Style No Academic Style

Roof Hip

Exterior Cladding Masonite

Foundation Pier with Infill: Brick

Porch Wrap Around

Windows Double Hung Sash: 6/1

Chimney Lateral Interior (2): Brick

Alterations Replaced Columns



Crawford County Historic Resource

Field ID: CD-127
GNAHRGIS ID: 245906
County: Crawford
**Preliminary NR
Assessment:** May Meet
Status - Listed: Not Listed



245 East Agency St.

Coordinates: 32.72081, -84.00778



Resource Type Building

Resource Use Residential: Single Family Dwelling

Date of Construction 1892 Known

Building Type Georgian Cottage

Structural System Balloon Frame

Style No Academic Style

Roof Hip

Exterior Cladding Wood: Clapboard

Foundation Pier with Infill: Brick

Porch Verandah

Windows Double Hung Sash: 1/1

Chimney Off-center Within Roof Surface (2): Brick

Alterations Shed addition right facade
Replaced windows
Shed addition rear



Crawford County Historic Resource

Field ID: CD-128
GNAHRGIS ID: 245907
County: Crawford
Preliminary NR Assessment: May Be Eligible
Status - Listed: Not Listed



10 McCrary St

Coordinates: 32.72084, -84.00988



Resource Type Building

Resource Use Residential: Single Family Dwelling

Date of Construction Circa 1890

Building Type Unknown

Structural System Platform

Style Folk Victorian

Roof Gable:Cross

Exterior Cladding Wood: Clapboard

Foundation Pier with Infill:Brick

Porch Wrap Around

Windows Factory Sash: 1/1

Chimney non observed

Alterations Replaced Windows
Rear Shed Addition



Crawford County Historic Resource

Field ID: CD-129
GNAHRGIS ID: 245908
County: Crawford
Preliminary NR Assessment: May Be Eligible
Status - Listed: Not Listed



32, 30 McCrary St

Coordinates: 32.72084, -84.00988



Resource Type Building

Resource Use Residential: Multiple
Family Dwelling

Date of Construction Circa 1920

Building Type Bungalow: side gable

Structural System Platform

Style No Academic Style

Roof Gable:Side

Exterior Cladding Wood: Clapboard

Foundation Pier with Infill:Brick

Porch Portico

Windows Double Hung Sash: 6/6
Jalousie

Chimney Ridgeline (1), Roof Surface
(1): Brick

Alterations



Crawford County Historic Resource

Field ID: CD-130
GNAHRGIS ID: 245909
County: Crawford
Preliminary NR Assessment: May Be Eligible
Status - Listed: Not Listed



East Corner of McCrary St. and Rucker St.

Coordinates: 32.72084, -84.00988



Resource Type Building

Resource Use Residential: Single Family Dwelling

Date of Construction 1912 Known

Building Type Bungalow: Front gable

Structural System Balloon Frame/Platform

Style Craftsman

Roof Gable:Front

Exterior Cladding Wood: Clapboard

Foundation Unknown

Porch Wrap Around

Windows Double Hung Sash: 4/1

Chimney Off-center Within Roof Surface: Brick

Alterations Gabled addition rear
Modern Door



Crawford County Historic Resource

Field ID: CD-131
GNAHRGIS ID: 245910
County: Crawford
Preliminary NR Assessment: May Be Eligible
Status - Listed: Not Listed



21 McCrary St.

Coordinates: 32.72084, -84.00988



Resource Type Building

Resource Use Residential: Single Family Dwelling

Date of Construction 1948 Known

Building Type American Small House

Structural System Balloon Frame/ Platform

Style No Academic Style

Roof Gable:Side

Exterior Cladding Wood: Clapboard

Foundation Continuous: CMU

Porch Verandah

Windows Double Hung Sash: 6/6

Chimney Off-center Ridgeline: Brick

Alterations Gabled addition rear w/ second entry



Crawford County Historic Resource

Field ID: CD-132
GNAHRGIS ID: 245911
County: Crawford
Preliminary NR Assessment: May Be Eligible
Status - Listed: Not Listed



90 Wright St.

Coordinates: 32.72062, -84.01085



Resource Type Building

Resource Use Residential: Single Family Dwelling

Date of Construction Circa 1930

Building Type Bungalow: front gable

Structural System Balloon Frame/Platform

Style Craftsman

Roof Gable:Front

Exterior Cladding metal: Pressed Sheet

Foundation Continuous: Brick

Porch Verandah

Windows Double Hung Sash: 6/6

Chimney Unknown

Alterations Modern Door



Crawford County Historic Resource

Field ID: CD-133
GNAHRGIS ID: 245912
County: Crawford
Preliminary NR Assessment: May Be Eligible
Status - Listed: Not Listed



150 East Agency St.

Coordinates: 32.72009, -84.00893



Resource Type Building

Resource Use Residential: Single Family Dwelling

Date of Construction Circa 1930

Building Type bungalow: front gable

Structural System Balloon Frame/ Platform

Style Craftsman

Roof Gable:Front

Exterior Cladding Brick Veneer, Vinyl

Foundation Continuous: Brick

Porch Verandah

Windows Double Hung Sash: 5/1

Chimney Lateral Interior (2): Brick

Alterations Exterior cladding



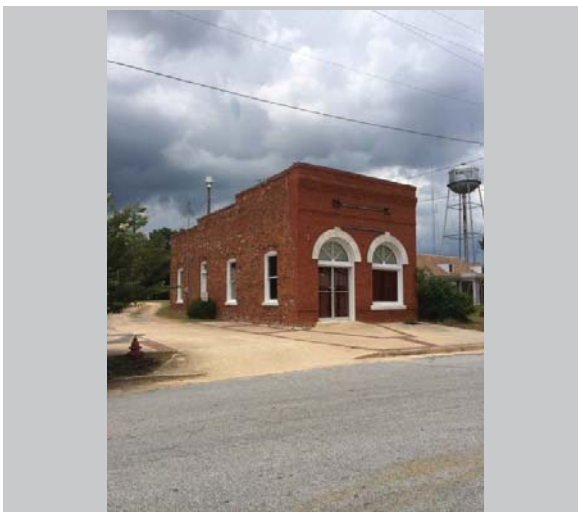
Crawford County Historic Resource

Field ID: CD-134
GNAHRGIS ID: 245913
County: Crawford
Preliminary NR Assessment: May Be Eligible
Status - Listed: Not Listed



97 East Agency

Coordinates: 32.71966, -84.00973



Resource Type Building

Resource Use Commercial: business

Date of Construction Circa 1900

Building Type Single Story Commercial Block

Structural System Unknown

Style Stripped Classicism

Roof Flat

Exterior Cladding Brick Veneer

Foundation Concrete

Porch N/A

Windows Fixed: 1/1

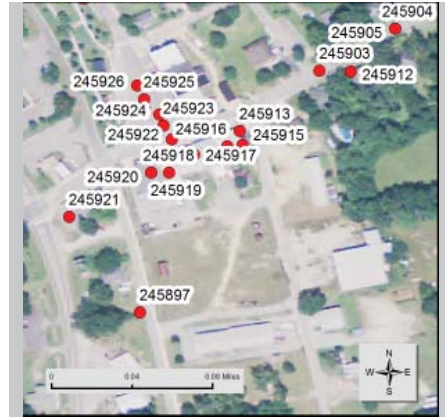
Chimney none observed

Alterations



Crawford County Historic Resource

Field ID: CD-135
GNAHRGIS ID: 245915
County: Crawford
Preliminary NR Assessment: May Be Eligible
Status - Listed: Not Listed



94 East Agency St.

Coordinates: 32.71956, -84.00971



Resource Type Building
Resource Use Commercial: Business
Date of Construction Circa 1960
Building Type Central Hallway
Structural System Unknown
Style No Academic Style
Roof Flat

Exterior Cladding Brick Veneer

Foundation Concrete

Porch N/A

Windows Pivotal Sash: 1/5

Chimney none observed

Alterations



Crawford County Historic Resource

Field ID: CD-136
GNAHRGIS ID: 245916
County: Crawford
Preliminary NR Assessment: May Be Eligible
Status - Listed: Not Listed



90, 88 East Agency

Coordinates: 32.71955, 84.00982



Resource Type Building

Resource Use Commercial: retail

Date of Construction Circa 1910

Building Type Single Story Commercial Block

Structural System brick bearing

Style No Academic Style

Roof Flat

Exterior Cladding brick

Foundation concrete

Porch N/A

Windows Factory: single pane

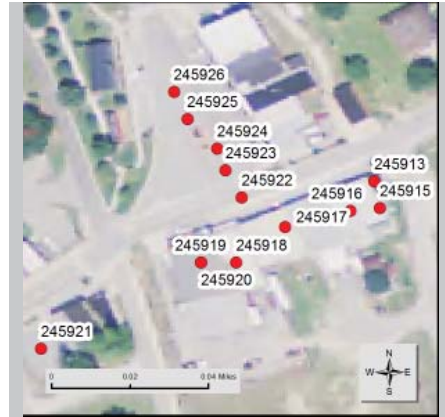
Chimney None observed

Alterations replaced fenestration on right
original structure split into two spaces



Crawford County Historic Resource

Field ID: CD-137
GNAHRGIS ID: 245917
County: Crawford
Preliminary NR Assessment: May Be Eligible
Status - Listed: Not Listed



Hudson's BBQ
86 East Agency St.

Coordinates: 32.71949, -84.01006



- Resource Type** Building
- Resource Use** Commercial: Restaurant
- Date of Construction** Circa 1920
- Building Type** Single Story Commercial
- Structural System** Brick Bearing Wall
- Style** No Academic Style
- Roof** Flat
- Exterior Cladding** Brick
- Foundation** Concrete
- Porch** N/A
- Windows** Factory: single pane
- Chimney** none visible
- Alterations** metal awning addition



Crawford County Historic Resource

Field ID: CD-10
GNAHRGIS ID: 245767
County: Crawford
**Preliminary NR
Assessment:** Does Not Meet
Status - Listed: Not Listed



Gordon Chapel
End of Gordon Chapel Road

Coordinates: 32.63344, -83.94861



Resource Type Site

Resource Use Funerary: Cemetery

Date of Construction 1917

Common Names None

≈ Number of Burials 60

Oldest Burial 1917

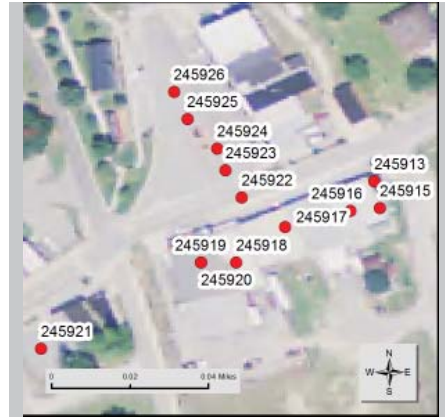
Burial Description Graves Face East
1 WWII Veteran

Cemetery Description Non-Contributing Church
Unmarked Ledger Stones



Crawford County Historic Resource

Field ID: CD-139
GNAHRGIS ID: 245919
County: Crawford
Preliminary NR Assessment: May Be Eligible
Status - Listed: Not Listed



SE Corner of S Matthew St and East Agency St

Coordinates: 32.71936, -84.01037



Resource Type Building

Resource Use Commercial: retail

Date of Construction Circa 1920

Building Type Single Story Commercial

Structural System brick bearing wall

Style No Academic Style

Roof Flat

Exterior Cladding Brick

Foundation Concrete

Porch N/A

Windows Factory: single pane

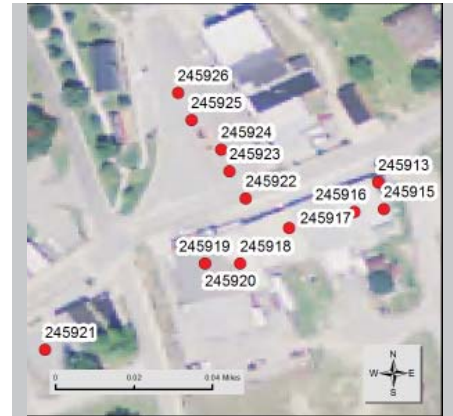
Chimney none observed

Alterations



Crawford County Historic Resource

Field ID: CD-140
GNAHRGIS ID: 245920
County: Crawford
Preliminary NR Assessment: May be Eligible
Status - Listed: Not Listed



Hardware Store
East Agency Rd.

Coordinates: 32.71936, -84.01037



Resource Type Building

Resource Use Commercial: retail

Date of Construction Circa 1920

Building Type Single Story Commercial

Structural System Brick bearing wall

Style No Academic Style

Roof Flat

Exterior Cladding brick

Foundation Concrete

Porch Verandah

Windows Factory: single pane

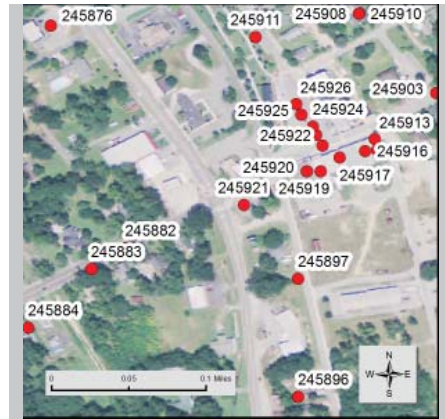
Chimney none observed

Alterations



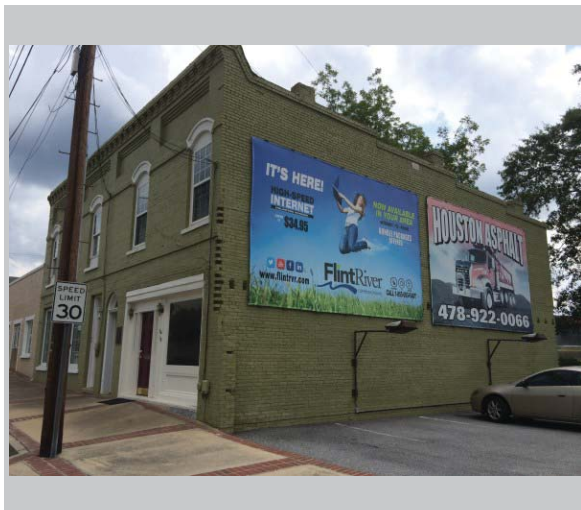
Crawford County Historic Resource

Field ID: CD-141
GNAHRGIS ID: 245921
County: Crawford
Preliminary NR Assessment: May Be Eligible
Status - Listed: Not Listed



16 East Agency

Coordinates: 32.71904, -84.01096



Resource Type Building

Resource Use Commercial: office

Date of Construction Circa 1920

Building Type multiple story commercial

Structural System Brick breaing wall

Style No Academic Style

Roof Flat

Exterior Cladding Brick

Foundation Concrete

Porch None

Windows Factory: single pane/
double sash: 6/6

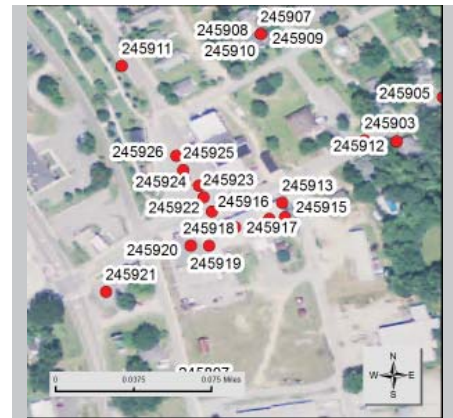
Chimney none observed

Alterations



Crawford County Historic Resource

Field ID: CD-142
GNAHRGIS ID: 245922
County: Crawford
Preliminary NR Assessment: May Be Eligible
Status - Listed: Not Listed



Roberta Drugs
corner of East Agency St and Wright St.

Coordinates: 32.71960, -84.01022



Resource Type Building

Resource Use Commercial: retail

Date of Construction Circa 1910

Building Type Single story commercial

Structural System brick bearing walls

Style No Academic Style

Roof Flat

Exterior Cladding brick

Foundation Concrete

Porch None

Windows Fixed/ factory: Single pane

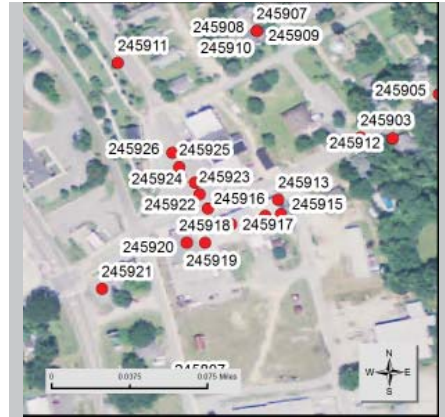
Chimney none onserved

Alterations



Crawford County Historic Resource

Field ID: CD-143
GNAHRGIS ID: 245923
County: Crawford
Preliminary NR Assessment: May Be Eligible
Status - Listed: Not Listed



10 Wright St.

Coordinates: 32.71970, -84.01028



Resource Type Building

Resource Use vacant

Date of Construction Circa 1900

Building Type Single story commercial

Structural System brick bearing wall

Style No Academic Style

Roof flat

Exterior Cladding Brick

Foundation Concrete

Porch Verandah

Windows Fixed: 4/5 20 pane

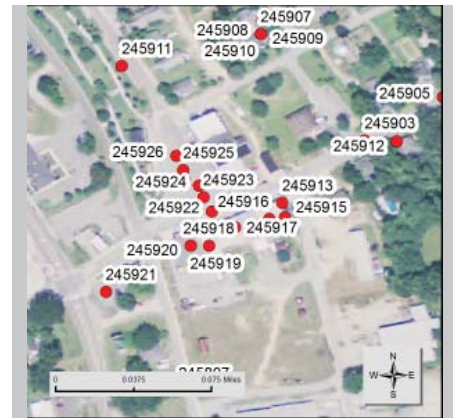
Chimney none observed

Alterations



Crawford County Historic Resource

Field ID: CD-144
GNAHRGIS ID: 245924
County: Crawford
Preliminary NR Assessment: May Be Eligible
Status - Listed: Not Listed



18 Wright St.

Coordinates: 32.71978, -84.01031



Resource Type Building

Resource Use Commercial: business

Date of Construction Circa 1900

Building Type Single Story commercial

Structural System brick bearing wall

Style No Academic Style

Roof Flat

Exterior Cladding brick

Foundation Concrete

Porch None

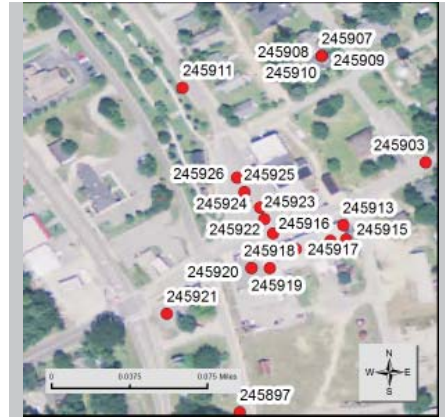
Windows Fixed: 2/1

Chimney none observed

Alterations

 **Crawford County**
Historic Resource

Field ID: CD-145
GNAHRGIS ID: 245925
County: Crawford
Preliminary NR Assessment: May Be Eligible
Status - Listed: Not Listed



22 Wright St.

Coordinates: 32.71989, 84.01042

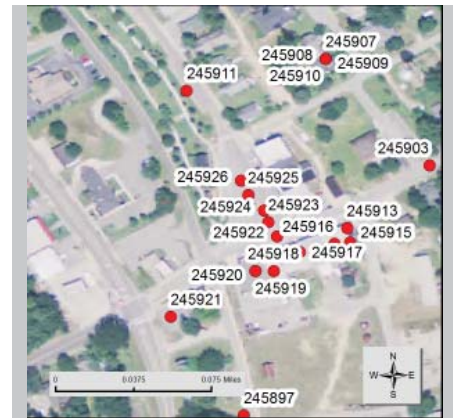


- Resource Type** Building
- Resource Use** Commercial: Retail
- Date of Construction** Circa 1900
- Building Type** Single story commercial
- Structural System** brick bearing wall
- Style** No Academic Style
- Roof** flat
- Exterior Cladding** Brick
- Foundation** Concrete
- Porch** None
- Windows** Fixed: 6o/1
- Chimney** None observed
- Alterations**



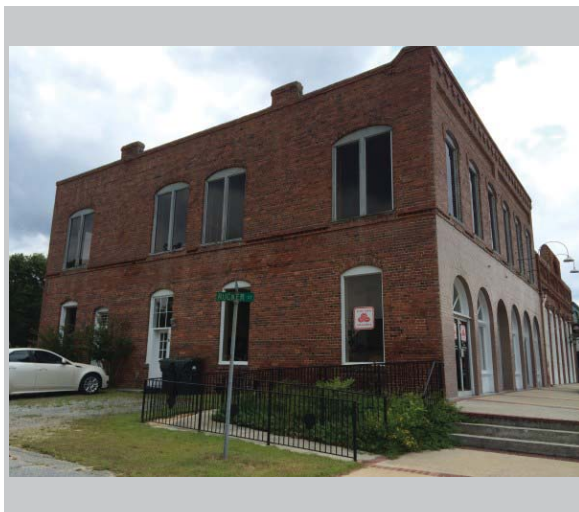
Crawford County Historic Resource

Field ID: CD-146
GNAHRGIS ID: 245926
County: Crawford
Preliminary NR Assessment: May Be Eligible
Status - Listed: Not Listed



Old Post Office
38 Wright St.

Coordinates: 32.71999, -84.01047



Resource Type Building

Resource Use Commercial: Office

Date of Construction Circa 1920

Building Type Multiple Story Commercial

Structural System Brick bearing wall

Style No Academic Style

Roof Flat

Exterior Cladding Brick

Foundation Concrete

Porch none

Windows Fixed:

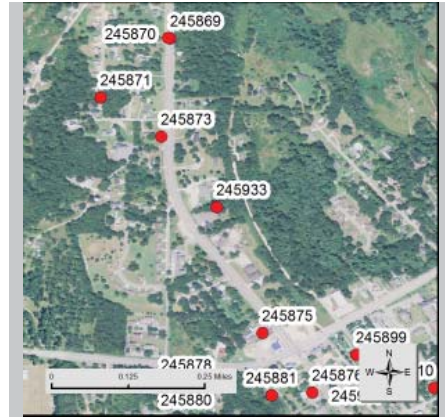
Chimney none observed

Alterations



Crawford County Historic Resource

Field ID: CD-147
GNAHRGIS ID: 245933
County: Crawford
Preliminary NR Assessment: May Be Eligible
Status - Listed: Not Listed



corner of Dugger Ave and Lake St.

Coordinates: 32.72513, -84.01503

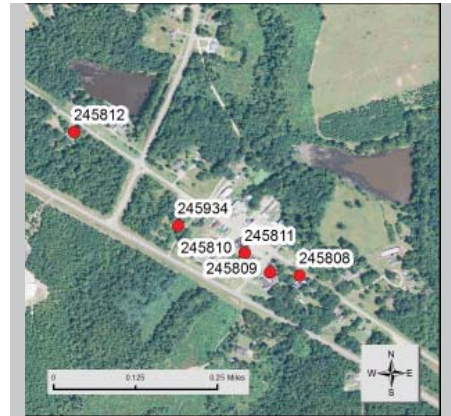


- Resource Type** Building
- Resource Use** Residential: Single family Residence
- Date of Construction** Circa 1930
- Building Type** No Academic Style
- Structural System** Balloon/ Platform
- Style** Moderne
- Roof** Flat
- Exterior Cladding** Stuccoed Masonry
- Foundation** unknown
- Porch** Verandah
- Windows** Factory Sash: 1/1
- Chimney** Stuccoed Masonry
- Alterations** Replaced Front Door



Crawford County Historic Resource

Field ID: CD-148
GNAHRGIS ID: 245934
County: Crawford
Preliminary NR Assessment: May Be Eligible
Status - Listed: Not Listed



Hatcher Rd., between old 341 and 341

Coordinates: 32.797829, -84.030636



Resource Type Building

Resource Use Residential: Single Family Dwelling

Date of Construction Circa 1900

Building Type Georgian Cottage

Structural System Balloon/ Platform Frame

Style Folk Victorian

Roof Hip

Exterior Cladding Wood: Clapboard

Foundation Pier: Brick

Porch Verandah

Windows Double Hung Sash: 2/2

Chimney lateral interior(2): Brick

Alterations replaced windows
currently under renovation

Bibliography

<>. "Georgia Historic Resources Survey Manual," Atlanta: Georgia Department of Natural Resources, Historic Preservation Division, 2000.

<>. Georgia's Living Places: Historic Houses in their Landscaped Setting (1991), http://georgiashpo.org/sites/uploads/hpd/pdf/NR15arch_20080521100904_optimized.pdf (accessed August 01, 2012).

<>. "How to Apply the National Register Criteria for Evaluation: National Register Bulletin 15," (Washington, D.C. : U.S. Government Printing Office, Department of the Interior, National Park Service, 1997.) <http://www.nps.gov/nr/publications/bulletins/pdfs/nrb15.pdf>

Anderson Cordova, Karen and Burns, Leigh. Preservation Primer: A Resource Guide for Georgia. Atlanta: Georgia Department of Natural Resources, HPD, 2011.

Ching, Frank. A Visual Dictionary of Architecture, New York : Van Nostrand Reinhold, 1995.

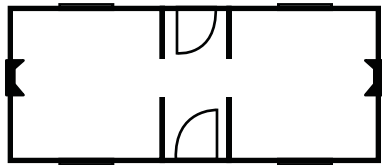
Cloues, Richard. The Ranch House in Georgia: Guidelines for Evaluation Historic Preservation Division; available at http://issuu.com/georgiashpo/docs/ranch_house_guidelines?mode=window&backgroundcolor=%23222222 (Accessed August 12, 2012).

Derry, Anne, Jandal, H. Ward, Shull, Carol D., and Thorman, Jan. "Guidelines for Local Surveys: A Basis for Preservation Planning. National Register Bulletin 24," Washington, D.C.: U.S. Government Printing Office, Department of the Interior, National Park Service, 1985.) <http://www.nps.gov/nr/publications/bulletins/pdfs/nrb24.pdf>

Lambin, Jeanne. "Preserving Resources from the Recent Past," Washington, D.C.: National Trust for Historic Preservation, 2007

McAlaster, Virginia and Lee. A Field Guide to American Houses, New York: Alfred A, Knopf, Inc, 2003.

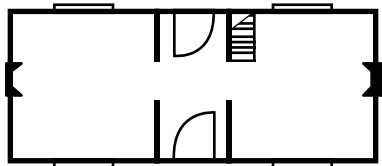
Residential House Types in Georgia



Central Hallway

Single Story

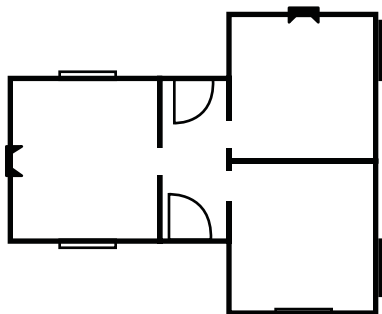
One room deep by two wide with central hallway



I-House

Multi-Story

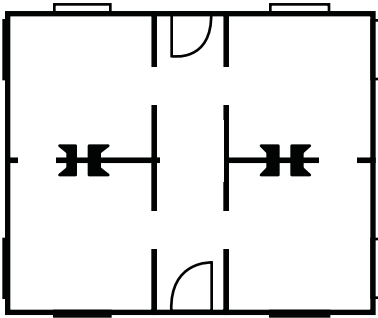
One room deep by two wide with central hallway



Gabled Wing Cottage

Single or Multi-Story

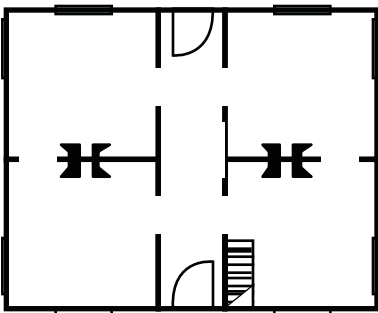
Asymmetrical massing with central hallway



Georgian Cottage

Single Story

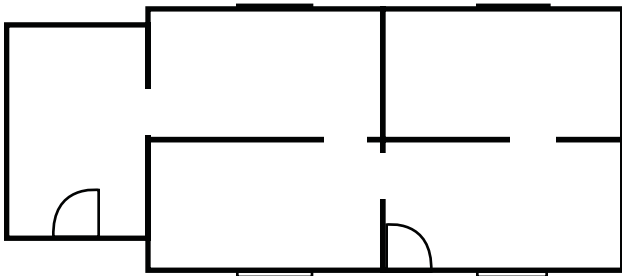
Two rooms deep by two rooms wide with central hallway



Georgian House

Multi-Story

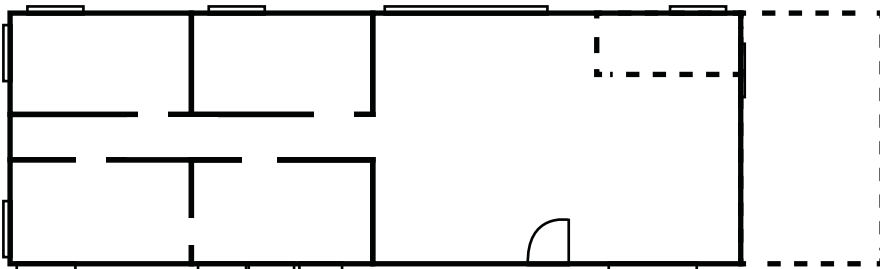
Two rooms deep by two rooms wide with central hallway



Side-Gabled Cottage

Single Story

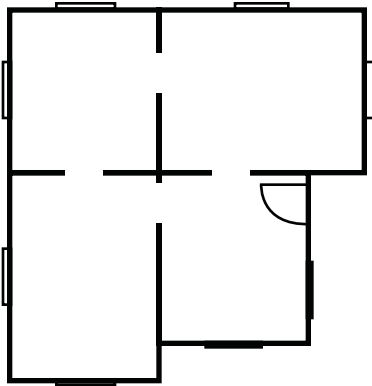
Tightly-massed rooms with side projecting gables



Ranch House

Single Story

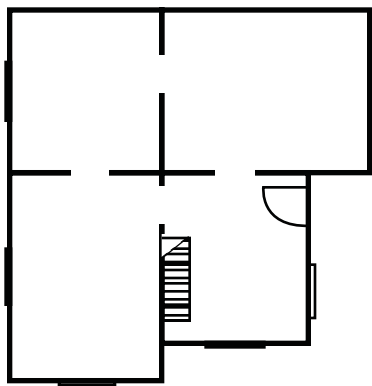
Multiple rooms wide by two rooms deep; few hallways with interior zoning



Queen Anne Cottage

Single Story

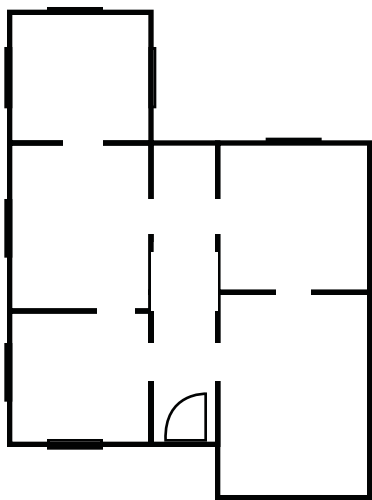
Asymmetrical massing with no central hallway



Queen Anne House

Multi-Story

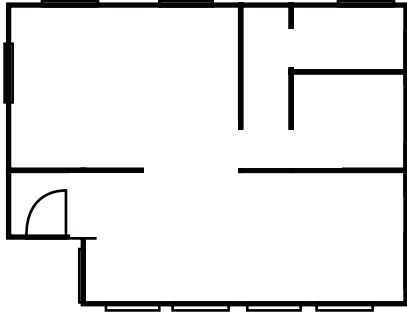
Asymmetrical massing with no central hallway



New South Cottage

Single Story

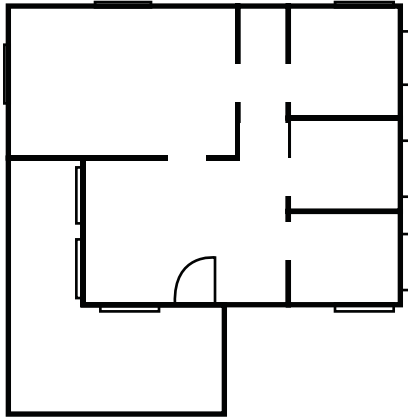
Asymmetrical massing with central hallway



Bungalow (Front Gable)

Single Story

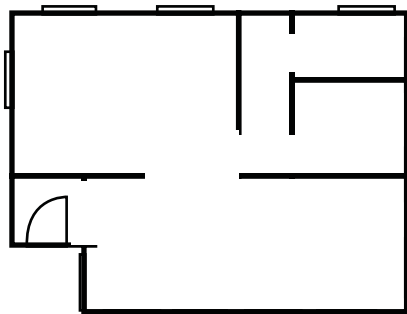
Irregular floor plans; one of four subtypes identified by a front gable



Bungalow (Cross Gabled)

Single Story

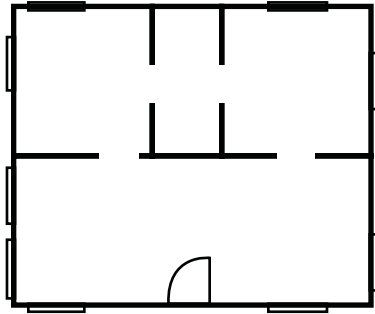
Irregular floor plans; one of four subtypes identified by a cross roof shape



Bungalow (Hipped)

Single Story

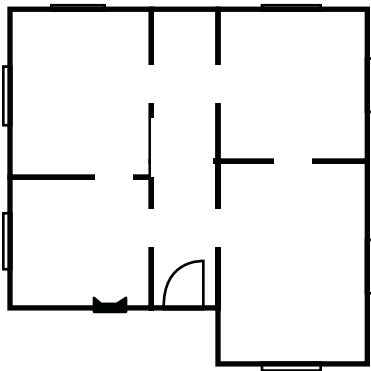
Irregular floor plans; one of four subtypes identified by a hipped roof shape



Bungalow (Side Gabled)

Single Story

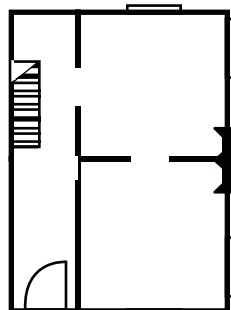
Irregular floor plans; one of four subtypes identified by a side gable roof shape



English Cottage

Single Story

Irregular room placement with pronounced gable entry and chimney



Side Hallway

Multi-Story

Two rooms deep by one wide with side hallway

Appendix A:

Architectural Styles in Georgia

The architecture of a house, its overall form and ornamentation, is classified as a style. Style is the decoration or ornamentation that has been put on a house in a systematic pattern or arrangement. Style has long been an important tool for describing, analyzing, and evaluating historic buildings; a style often reflects the needs and tastes of a particular time and a place in which it appears. Styles used during a particular time and in a particular location may contribute to an understanding of the culture of that period.



Adapted from Georgia's Living Places: Historic Houses in the Landscaped Settings, (1991), http://georgiashpo.org/sites/uploads/hpd/pdf/NR15arch_20080521100904_optimized.pdf.

Folk Victorian 1870-1920

Folk Victorian houses were built across Georgia in very large numbers. They were simple house forms, or house types, with Victorian-era decorative detailing such as jigsaw woodworks including brackets, spindlework and gingerbread trim. This detailing generally was taken from the elaborate styles, such as Queen Anne or Italianate, that were popular during the mid to late 19th century. Features were borrowed and added onto such places as porches and roof gables. This provided some hint of stylistic detailing on what was otherwise an unadorned traditional house form. This style is actually more a way of decorating a house than a precise stylistic category; however, the Folk Victorian house is so widespread that it demands a name.



Colonial Revival 1890-1955

Most Colonial Revival houses are symmetrical. A central entranceway is elaborated with a pediment supported by pilasters or columns. The use of broken pediments, fanlights and sidelights is common. Classical cornices with dentils or modillions are usually present. These features tend to be larger than original colonial details. The roof may be hipped or side-gabled with dormers. Windows have double-hung sashes, usually with six-over-six or nine-over-nine panes and may be paired. Walls are of masonry, masonry-veneer or wood.



English Vernacular Revival 1900-1940

Characteristics of English Vernacular Revival houses are a steeply pitched gabled roof with dominant front-facing gable and decorative half-timbering in the gables. Almost all have masonry walls. Most are masonry-veneered, a recently developed technique for applying a thin layer of masonry to a wall. Some houses have patterned brickwork, while others may be completely stuccoed. Often a variety of materials are used, such as brick walls with stone trim, wood half-timbering, and stuccoed gables. Massive masonry chimneys with decorative tops are common. Windows are generally tall and narrow, grouped together, multi-paned, and casements rather than double-hung. Some openings, particularly the entrance, may be emphasized by a round arch. Houses of this style are generally asymmetrical.



Craftsman 1910-1930

The Craftsman house uses a wide variety of materials both for its structure and decorative detailing. It has a low-pitched roof that is usually gabled but may also be hipped, giving a generally horizontal effect. The widely overhanging eaves are open with exposed rafters. Large gables have decorative brackets or braces at the eaves and may be covered with half-timbering. Roof dormers are sometimes found. Walls are most often wood but may also be covered with shingles or a masonry veneer of stone or brick. Porches have short square columns set on heavy masonry piers extending to the ground. Windows may have a multi-paned sash over a large one-pane sash. Craftsman houses are most often asymmetrical with a generally open and functional plan.



Gothic Revival 1850-1890

Gothic Revival houses typically have steeply pitched gabled roofs with both front-and side-facing gables. Decoratively sawn bargeboards are commonly found along the eaves. Window and door openings often have either pointed arched tops or heavily molded or pointed hoods. Porches are usually supported by slender posts with sawn woodwork forming flattened arches or brackets. Some houses have vertical board-and batten siding. This style emphasized picturesqueness, verticality, and varied use of materials.



Greek Revival 1825-1860

The Greek Revival style is characterized by details such as prominent columns, pilasters, and wide plain entablatures that encircle a house. Proportions are large and heavy. A symmetrical, rectangular block has a symmetrical front facade with a central entrance. An elaborate door surround contains a rectangular transom, sidelights and pilasters. A typical expression of the Greek Revival in Georgia is a low-pitched, hipped roof supported by columns to form a full-width porch. Porticoes with triangular pediments are also found. Vernacular interpretations with simplified details, such as square rather than round columns, are common. Double-hung windows generally have six-over-six panes.



Italianate 1840-1885

Italianate houses are generally asymmetrical with an L-shaped or other irregularly shaped plan and gabled roof. Distinguishing features are the widely overhanging eaves with decorative brackets that emphasize the cornice. Typically tall narrow windows with large two-over-two or one-over-one panes are often paired, arched, and topped with elaborate hoods. Bay windows are also common. Italianate style residential architecture faded out during the 1880s; however, many Italianate



style commercial blocks were constructed until the 1890s. The flat topped blocks with brackets and decorative window moldings were two or more stories tall and featured large storefront windows. Brackets beneath eaves are the most distinguishing characteristic of the Italianate commercial block, and varied use of materials.



Mediterranean Revival 1890-1910

A Mediterranean Revival house has smooth stuccoed or masonry walls and is usually asymmetrical. The roof is covered with clay tile, is low-pitched, and may be either hipped or gabled. Houses following the Spanish tradition will have little or no eave overhang, while those following the Italian influence will have widely overhanging eaves with exposed rafters. Recessed and arcaded loggias, or open porches, are common. Windows are generally arched and may be grouped together. Sometimes columns and pilasters are used to elaborate openings.



Neoclassical Revival 1895-1940

The most common feature of the Neoclassical Revival style is a dominant full-height front portico with classical columns. The portico may be at the entry or may cover the full facade; it may have a triangular pediment or be part of the overall roof. A full-height entry portico is often coupled with a one-story full-facade porch. The facade is more or less symmetrical, and the central entrance, surrounded with pilasters and columns, is elaborated with fanlights, sidelights, and transoms. There is almost always a classical cornice with dentils or modillions. The roof is usually low-pitched and hipped and may have a balustrade. A porte-cochere and side porches supported by columns are common.



Queen Anne 1880-1915

A Queen Anne style house is asymmetrical with complex roof and wall shapes. It displays a variety of textures, materials, and detailing. The asymmetrical shape results from a floor plan that is open and flowing. The roof is often steeply pitched and hipped with both front-and side-facing, or cross, gables. Wall surfaces avoid a smooth appearance through the use of projecting bays and materials such as patterned shingles that provide texture. The porch is usually asymmetrical and often wraps around two sides of the house. It is supported with slender turned posts and often decorated with sawn brackets and spindlework friezes. Roof gables may also be decorated with sawn ornamentation or spindlework and covered with patterned shingles. There are often prominent and elaborate brick chimneys with patterned and corbeled brickwork. A round or multi-sided tower may be found at a corner.



Spanish Colonial Revival 1900-1940

A Spanish Colonial Revival house has a clay tile roof that is usually gabled with little eave overhang. Walls are of smooth stucco. Arched openings and arcaded loggias, or open porches, are common. Windows are generally casement and grouped together. The roof may be elaborated with curvilinear gables or parapets from the mission tradition. Exposed roof beams may protrude from the walls to emphasize construction methods.







The University of Georgia
College of Environment and Design
Center for Community Design & Preservation
Historic Resources Survey Report
Crawford County, Georgia