

Historic Resources Survey Report

Brantley County, Georgia

July 2016



The University of Georgia
College of Environment and Design
Center for Community Design & Preservation
Historic Resources Survey Report
Brantley County, Georgia 2016

Credits

Report Submitted to:

Georgia Transmission Corporation
2100 East Exchange Place
Tucker, Georgia, 30084-5342

Report Prepared by:

Center for Community Design and Preservation at the University of Georgia
<http://www.ced.uga.edu/pso>
225 W Broad St
Athens, Georgia, 30062

Pratt Cassity – Principal Investigator

Laura Kviklys – Project Coordinator

James Locke, MHP Candidate- Field Survey, Report Creation

Sean Griffith, MHP Candidate- Field Survey, Report Creation

Audrey Thomas, MHP Candidate- Field Survey, Report Creation

Emma Keethler, MHP Candidate- Field Survey, Report Creation

Eleonora Machado, CCDP Graphics Coordinator, Report design

Table of Contents

Page 4	List of Figures
Page 4	List of Tables
Page 5	Introduction
Page 7	Project Description
Page 8	Methodology
Page 9	Criteria for Evaluation
Page 11	Survey Results
Page 17	Integrity
Page 19	Conclusion
Page 21	Resource Templates
Page 74	Bibliography
Page 75	Residential Types in Georgia
Page 80	Architectural Styles in Georgia

List of Figures

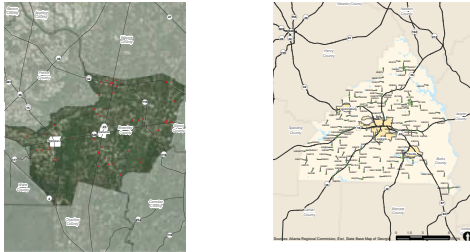


Figure 1. Project Survey Area of Brantley County Page 6
 Figure 2. Identified Historic Resources in Brantley County Page 10

Current Use	Count	Percentage
Burial - multiple (cemetery)	22	41.5%
Campground/Arbor/Retreat	1	1.9%
Fire Station	1	1.9%
Post Office	1	1.9%
Religious Facility		

Resource Type	Count	Percentage
Building	29	54.7%
Site	23	43.4%
Structure	1	1.9%

Residential Building Type	Count	Percentage
American Foursquare	1	3.7%
Bungalow: front gable	8	29.6%
Bungalow: side gable	2	7.4%
Central Hallway	4	14.8%
Dogtrot	1	3.7%
Double Pen	1	3.7%
Extended Hall Parlor	2	7.4%
Gabled Ell cottage	1	3.7%
Georgia Cottage	1	3.7%

Date of construction	Count	Percentage
1850-1859	1	1.9%
1860-1869	3	5.7%
1870-1879	1	1.9%
1880-1889	1	1.9%
1890-1899	13	24.5%
1900-1909	11	20.8%
1910-1919	9	17.0%
1920-1929	3	5.7%
1930-1939	3	5.7%
1940-1949	2	3.8%
1950-1959	1	1.9%
1960-1976	7	13.2%

List of Tables

Table 1.	All Identified Resources	Page 12
Table 2.	Resource Type	Page 14
Table 3.	Current Use	Page 14
Table 4.	Date of Construction	Page 14
Table 5.	Residential Building Type	Page 15
Table 6.	Architectural Style	Page 15

Introduction

What is a cultural resource survey?



The Georgia Historic Resources Survey is an ongoing, statewide survey of buildings, sites, structures, and objects of historical, architectural, and cultural significance. The Georgia Survey is one of the programs administered by the Historic Preservation Division of the Department of Natural Resources (HPD).

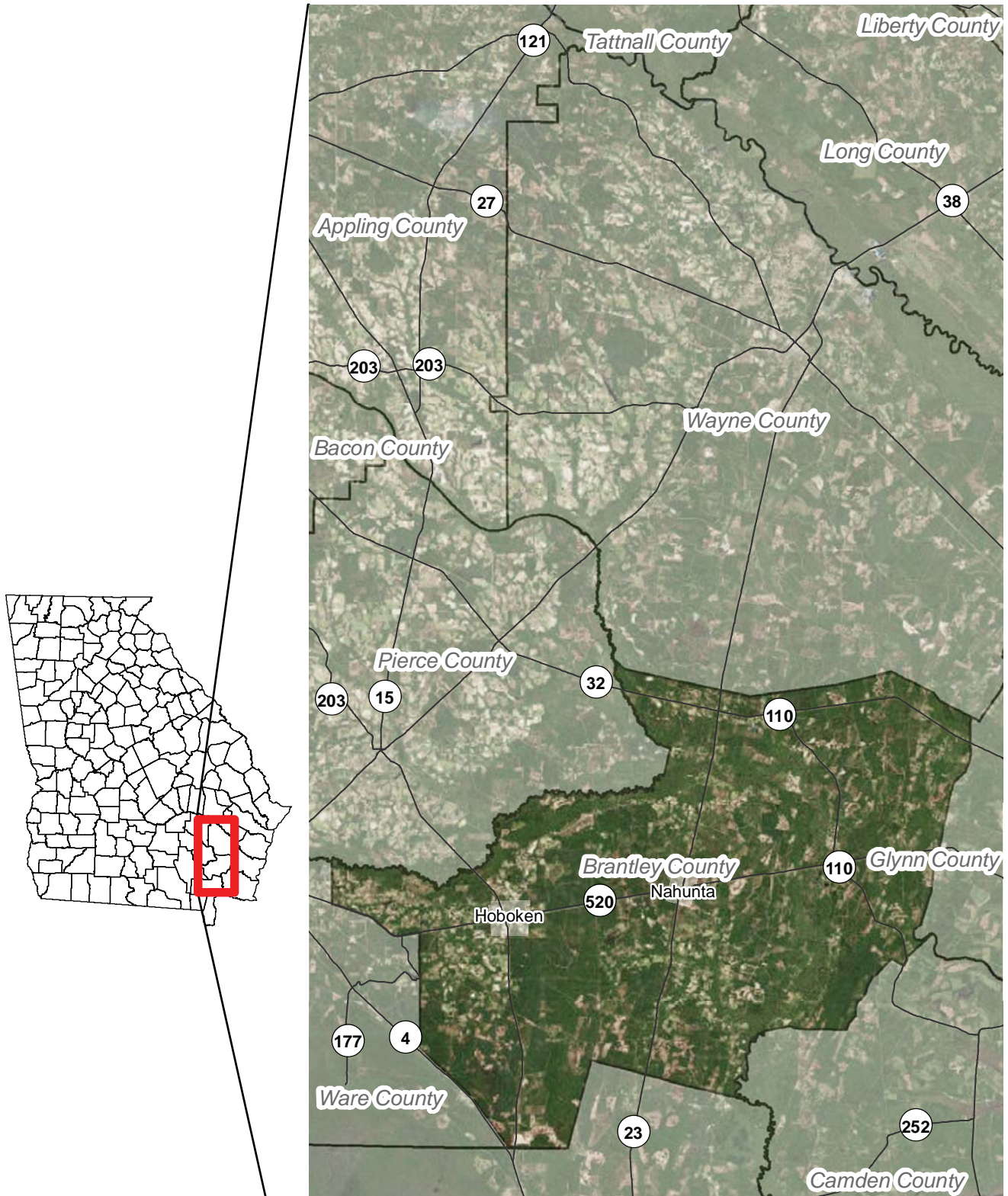
Completed surveys can be used to identify individual buildings and districts for possible listing in the Georgia Register of Historic Places; assist the preservation efforts of Georgia's Certified Local Governments; support local designations of buildings and districts; expedite environmental review by governmental agencies;

aid preservation and land-use planning; and promote research of the state's history and architecture. Through the public's participation, encouraged by the HPD, surveys can increase awareness of a community's historic resources.

A goal of historic resource survey is to collect a minimum level of information needed statewide for preservation activities. This basic, standard survey does not gather all the kinds of information needed in local preservation planning, environmental review, National Register nominations, or historical research, but serves as a foundation for these preservation activities.

¹<>. "Georgia Historic Resources Survey Manual," Atlanta: Georgia Department of Natural Resources, Historic Preservation Division, 2000.

Figure 1. Project Survey Area of Brantley County



Project Description

The Findit! Program housed at the Center for Community Design and Preservation (CCDP) within the University of Georgia's College of Environment and Design (CED) conducted a Phase I Historic Resource Survey of Brantley County, Georgia in July 2016. Findit! Is a state-wide cultural resource survey program sponsored by the Georgia Transmission Corporation (GTC) in partnership with the Georgia Department of Natural Resources, Historic Preservation Division (GA SHPO). The project area covered the 442 square mile county, identifying resources only in unincorporated portions. Brantley County is located in the southern Georgia, and is bordered by Pierce and Wayne counties to the north, Glynn County to the east, Camden and Charlton counties to the south, and Ware County to the west.

The resource survey was performed by historic graduate students in the Historic Preservation program (MHP) at the CED. The survey consisted of historical and developmental research of the project area, identifying previous surveys and listed districts within the county, windshield and pedestrian field work, and data collection and analysis.

The information collected by the field survey was entered into Georgia's Natural, Archaeological, and Historic Resources Geographical Information System, (GNARHGIS), a web-based geographical information system designed to store and display information about Georgia's cultural resources. GNARHGIS is the repository for all of the current statewide historic resources survey data. The survey information was entered under survey ID 2338, "Findit Brantley County," and can be accessed at: <https://www.gnahrgis.org/gnahrgis/index.do>.

¹ Karen Anderson-Cordova and Leigh Burns. Preservation Primer: A Resource Guide for Georgia, Atlanta: Georgia Department of Natural Resources, Historic Preservation Division, 2011, 5.

Methodology

The survey was conducted according to the procedures outlined in The Georgia Historic Resources Survey Manual. The surveyors used a combination of USGS base maps and GIS data to identify potentially historic parcels and structures.

The survey was conducted according to the procedures outlined in The Georgia Historic Resources Survey Manual. The surveyors used a combination of USGS base maps and GIS data to identify potentially historic parcels and structures. The area was surveyed over the course of several days with systematic coverage of the project area.

Each assigned resource (within the assigned boundaries) was assessed for historic significance, and architectural integrity. A Georgia Historic Resources survey form was completed for buildings having a minimum level of architectural integrity. A structure with architectural integrity is one that generally retains its original location, design, setting, materials, workmanship, feeling and association. Properties with a significant loss of physical integrity, or those lacking historic significance were not surveyed. The physical condition of structures was not a consideration for identification for resources which retained architectural integrity.

All identified resources were approximately 50 years old or older, with the exception of Ranch Houses which were documented with a construction date prior to 1975. All properties surveyed were assigned an identification number then documented with the completion of a Georgia Historic Resource Survey Form, as well as photo documentation and corresponding georeferencing data. The survey form includes information about the use, style, floor plan, materials, context, physical description and an accurate determination of the date of construction and additions. Sources utilized for age determination and architectural style and type description included Lee and Virginia McAlester's *A Field Guide to American Houses*, the *Georgia Historic Resources Survey Manual*, *Georgia's Living Places* and *A Visual Guide to Architecture* by Francis D. K. Ching. All dates of construction are presented in nine year increments unless explicitly identified by markers or other documentation.

¹ Georgia's Living Places: Historic Houses in their Landscaped Settings (1991), http://georgiashpo.org/sites/uploads/hpd/pdf/NR15arch_20080521100904_optimized.pdf, (accessed August 01, 2012).

Criteria for Evaluation

National Register for Historic Places

Each resource was evaluated for potential listing in the National Register of Historic Places (NRHP), those resources already listed in the Register have been noted. The criteria for listing are outlined in the National Register Bulletin How to Apply the National Register Criteria for Evaluation published by the U.S Department of Interior, National Park Service. Cultural resources can be defined as eligible for the NRHP if they:

- A. Are associated with events that have had a significant contribution to a broad pattern of history; or
- B. Are associated with the lives of persons significant in the past;
- C. Embody distinctive characteristics of a type, period, or method of construction, or represent the work of a master, possess high artistic values, or represent a significant and distinguished entity whose components may lack distinction; or
- D. Have yielded or may be likely to yield, information important to history or prehistory.¹

Ordinarily cemeteries, birthplaces, or graves of historical figures, properties owned by religious institutions or used for religious purposes, structures that have been moved from their original locations, reconstructed historic buildings, properties primarily commemorative in nature, and properties that have achieved significance within the last 50 years are not considered for the National Register. However, properties will qualify if they are integral parts of districts that do meet the criteria or they fall within the following categories:

- a. A religious property deriving primary significance from architectural or artistic distinction or historical importance; or
- b. A building or structure removed from its original location but which is significant primarily for architectural value, or which is the surviving structure most importantly associated with a historic person or event; or
- c. A birthplace or grave of a historical figure of outstanding importance if there is no appropriate site or building directly associated with his or her productive life; or
- d. A cemetery which derives its primary significance from graves or persons of transcendent importance, from age, from distinctive design features, or from association with historic events; or
- e. A reconstructed building when accurately executed in a suitable environment and presented in a dignified manner as part of a restoration master plan, and when no other building or structure with the same association has survived; or
- f. A property achieving significance within the last 50 years if it is of exceptional importance.

For a property to qualify for the National Register it must meet one of the National Register Criteria for Evaluation by:

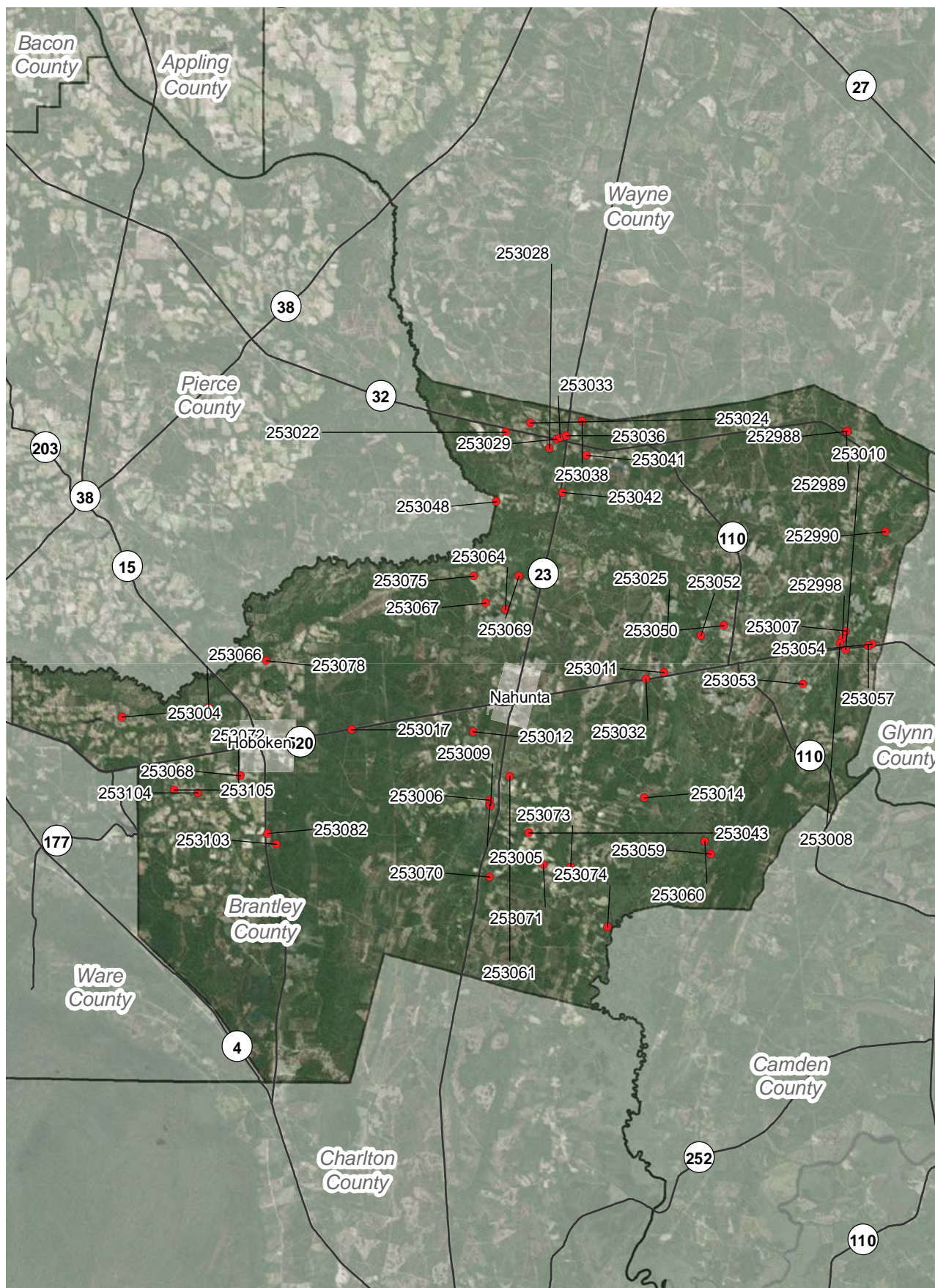
- Being associated with an important historical context and
- Retaining historic integrity of those features to convey its significance.

To determine whether a property or site retains integrity, it needs to be evaluated for the aspects of its location, design, setting, workmanship, materials, feeling, and association to convey its historic significance.²

¹The Criteria for Evaluation are found in the Code of Federal Regulations, Title 36, Part 60, reprinted in U.S. Department of Interior, National Park Service, National Register Bulletin: How to Apply the National Register Criteria for Evaluation, Washington, D.C., 1997, p. 2-3.

²A complete list of areas of significance can be accessed at http://www.nps.gov/nr/publications/bulletins/nrb15/nrb15_5.htm

Figure 2. Identified Historic Resources in Brantley County



Survey Results

A total of 53 historic resources that meet and maintain a minimum level of age, architectural integrity, and historic significance were identified in unincorporated Brantley County. The resources were fairly split between buildings and sites, with 29 buildings and 23 sites still extant county wide. Of the built resources, the two most represented house types are the Front gable bungalow (8 resources, 29.6 % of total) and the Central Hallway Cottage (4 resources, 14.8 % of total).

A total of 51 (96.2%) documented structures exhibited no architectural style. A building with no architectural style may be historic, but does not have any characteristics or elements of high style, or classical architecture. Buildings in unincorporated areas usually do not embody high styles, and this figure is representative of vernacular architecture across the state. The variance in building type and architectural styles exhibited in unincorporated Brantley County is typical for historically agrarian Georgia communities.

Table 1: All Identified Resources

Resource ID	Name	Latitude	Longitude	National register eligibil	Building Type
252989	BT-1	31.34019355	-81.78121871	May meet	Bungalow: Front Gable
252988	BT-2	31.34006826	-81.78085107	May meet	Bungalow: Front Gable
252990	BT-3	31.28930182	-81.75788615	May meet	Mount Olive Cemetery
252998	BT-4	31.23523707	-81.78403361	Does not meet	Unnamed Cemetery
253007	BT-5	31.23888531	-81.78185294	May meet	Unnamed Cemetery
253008	BT-6	31.23260413	-81.78558443	May meet	Bungalow: Front Gable
253010	BT-7	31.22949725	-81.78200405	May meet	Highsmith Cemetery
253022	BT-8	31.34019	-81.98674	Does not meet	Satilla Cemetery
253024	BT-9	31.34472956	-81.97176554	May meet	Ranch House
253028	BT-10	31.33184254	-81.96030035	May meet	Hortense Wesleyan Camp Meeting
253029	BT-11	31.33660328	-81.95586248	May meet	Us Post Office
253033	BT-12	31.33733788	-81.95390968	May meet	American Foursquare
253036	BT-13	31.33834159	-81.95023128	May meet	Gabled Ell Cottage
253038	BT-14	31.3456345	-81.9405421	May meet	Bungalow: Front Gable
253041	BT-15	31.32845638	-81.93810353	May meet	Unnamed Cemetery
253042	BT-16	31.30959582	-81.95257735	Does not meet	Twin Rivers Chapel Cemetery
253048	BT-17	31.30485375	-81.99253913	May meet	Extended Hall Parlor
253050	BT-18	31.24185418	-81.85521586	Does not meet	Ammons Cemetery
253052	BT-19	31.23697641	-81.86929236	May meet	Ranch House
253053	BT-20	31.21195715	-81.80790946	Does not meet	Pilgrim's Rest Cemetery
253054	BT-21	31.23220594	-81.76626146	May meet	Little Rock Masonic Cemetery
253055	BT-22	31.1512	-81.7879	Does not meet	Daniel's Cemetery
253059	BT-23	31.12579333	-81.86340822	Does not meet	Sand Hill Cemetery
253060	BT-24	31.13228526	-81.86739303	May meet	Single Pen
253067	BT-25	31.25340637	-81.99893708	May meet	Bungalow: Front Gable
253069	BT-26	31.26705439	-81.97894531	Does not meet	Lewis Cemetery
253070	BT-27	31.11437422	-81.9969598	Does not meet	Bethlehem Cemetery
253071	BT-28	31.12065259	-81.96463595	May meet	Bungalow: Side Gable
253073	BT-29	31.11927757	-81.94805653	May meet	Bungalow: Side Gable
253074	BT-30	31.08898855	-81.92583802	Does not meet	Dowling Cemetery
253075	BT-31	31.26703406	-82.00612292	Does not meet	Oak Grove Cemetery
253025	BT-32	31.238918	-81.889426	May meet	Smyrna Church
253032	BT-33	31.21493675	-81.90264702	May meet	Unknown Building
253011	BT-34	31.21803499	-81.89154529	May meet	Central Hallway
253014	BT-35	31.1544796	-81.90347916	Does not meet	Knox cemetery
253043	BT-36	31.13680848	-81.97303943	May meet	Dogtrot
253061	BT-37	31.16548164	-81.984664	May meet	Central Hallway

Table 1 Continued: All Identified Resources

253064 BT-38	31.25030728	-81.98715404	May meet	Extended Hall Parlor
253004 BT-39	31.19569434	-82.2182417	May meet	Bungalow: front gable
253005 BT-40	31.15153218	-81.99689974	May meet	Double Pen
253006 BT-41	31.15348764	-81.99688376	Does not meet	New Hope Church Cemetery
253009 BT-42	31.15069478	-81.9961372	May meet	Central Hallway
253012 BT-43	31.18817193	-82.0066163	May meet	Central Hallway
253017 BT-44	31.189393	-82.080005	May meet	Fire Tower
253078 BT-45	31.22435568	-82.1312757	Does not meet	Moore Cemetery
253066 BT-46	31.20048726	-82.16580097	Does not meet	Thrift Cemetery
253068 BT-47	31.16610124	-82.14699165	May meet	Martin Cemetery
253072 BT-48	31.15956589	-82.14790876	May meet	Bungalow: Front Gable
253082 BT-49	31.13664582	-82.13037297	May meet	Single Pen
253103 BT-50	31.13117598	-82.12530047	May meet	Unknown Building
253104 BT-51	31.15730611	-82.17240569	May meet	Georgian Cottage
253105 BT-52	31.15884768	-82.18665566	May meet	High Bluff Church and Cemetery
253057 BT-53	31.23139862	-81.76842612	May meet	Bungalow: Front Gable

Table 2. Resource Type

Resource Type	Count	Percentage
Building	29	54.7%
Site	23	43.4%
Structure	1	1.9%

Table 3. Current Resource Use

Current Use	Count	Percentage
Burial - multiple (cemetery)	22	41.5%
Campground/Arbor/Retreat	1	1.9%
Fire Station	1	1.9%
Post Office	1	1.9%
Religious Facility	1	1.9%
Secondary structure (domestic-related outbuilding)	1	1.9%
Single dwelling (single living unit)	19	35.8%
Vacant/not in use	7	13.2%

Table 4. Date of Construction

Date of construction	Count	Percentage
1850-1859	1	1.9%
1860-1869	3	5.7%
1870-1879	1	1.9%
1880-1889	1	1.9%
1890-1899	13	24.5%
1900-1909	11	20.8%
1910-1919	9	17.0%
1920-1929	3	5.7%
1930-1939	3	5.7%
1940-1949	2	3.8%
1950-1959	1	1.9%
1960-1976	7	13.2%

Table 5. Identified Building Types

Residential Building Type	Count	Percentage
American Foursquare	1	3.7%
Bungalow: front gable	8	29.6%
Bungalow: side gable	2	7.4%
Central Hallway	4	14.8%
Dogtrot	1	3.7%
Double Pen	1	3.7%
Extended Hall Parlor	2	7.4%
Gabled Ell cottage	1	3.7%
Georgia Cottage	1	3.7%
Ranch House	2	7.4%
Single Pen	2	7.4%
Unknown	2	7.4%

Table 6. Identified Architectural Styles

Style	Count	Percent
Craftsman	2	3.8%
No Academic Style	51	96.2%



Integrity



The integrity of documented resources in unincorporated Brantley County was mainly fair to good. The integrity of those not documented, was often affected by non-historic alterations, which compromise the resource's design, materials, and/or historic workmanship. These changes include additions to the building and material replacement including but not limited to: exterior cladding, porch alterations, window or door replacement, etc.

7 of the 53 (13.2%) identified resources are currently vacant. Many resources documented as 'vacant' maintain excellent integrity; these resources have few, if any alterations to their historic fabric. Vacant properties are considered highly endangered because they are more susceptible to fire and vandalism. Additionally, repairs and weatherproofing are not carried out in a timely manner, thus leaving the structures to decay. The condition of many of these resources is poor, but with minimal intervention, many of them can be restored.

Of the resources with minimal alterations, none appear

to meet the National Register Criteria for listing.

38 resource 'may meet' the National Register criteria; these resources have good to excellent architectural integrity, but warrant further research as to their accurate age and historic significance.

15 documented resources do not appear to meet the National Register standards. These resources may maintain historic significance, but do not meet the age criteria (as is the case with many cemeteries), or have undergone extensive alterations which hinder the resource's architectural integrity. These alterations often affect the design, materials, or workmanship of the particular resource, which invariably destroy the historic feeling and significance.



Conclusion



Brantley County has a wide array of extant house types for a formerly agrarian area. 2016 was the first time unincorporated Brantley County was documented; the existing building stock serves as a representative sampling of what may have historically been in this area.

A number of mid-century residential and religious structures were documented which may gain historic significance in their own right in the near future. Many mid-century residential resources maintain good integrity with few alterations; religious structures from the same period however, have undergone extensive alterations such as large additions or material replacements. Not documented in this study, but anecdotally noted, were a number of structures dating to the late 1970s and 1980s. If the architectural integrity of these potential resources remain intact, they may warrant a historic inventory in the coming decades.

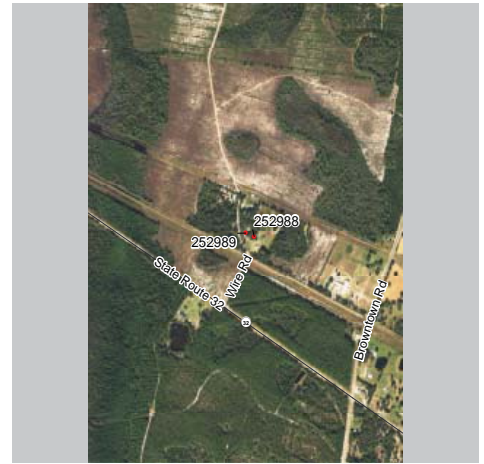
The disparate location of historic resources does not lend to a contagious district in the unincorporated portions of the county; however, a multiple property listing or a cultural landscape inventory within an agricultural context may provide protection for these resources on a county level.





Brantley County Historic Resource

Field ID: BT-01
GNAHRGIS ID: 252989
County: Brantley
Preliminary NR Assessment: May Meet



391 Wire Road

Coordinates: 31.34019, -81.78122

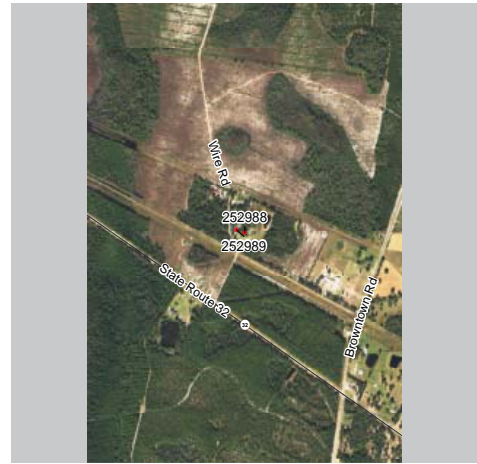


- Resource Type** Building
- Resource Use** Residential: Single Family Dwelling
- Date of Construction** c. 1920
- Building Type** Bungalow: Front Gable
- Structural System** Balloon Frame
- Style** No Academic Style
- Roof** Gable: Front
- Exterior Cladding** Wood: Clapboard
- Foundation** Pier with Infill: Concrete
- Porch** Wrap-Around
- Windows** Double Hung Sash: 3/1, Rectangle
- Chimney** No Chimney Observed
- Additional Notes** Possible right side alteration
Lattice infill foundation
Original windows



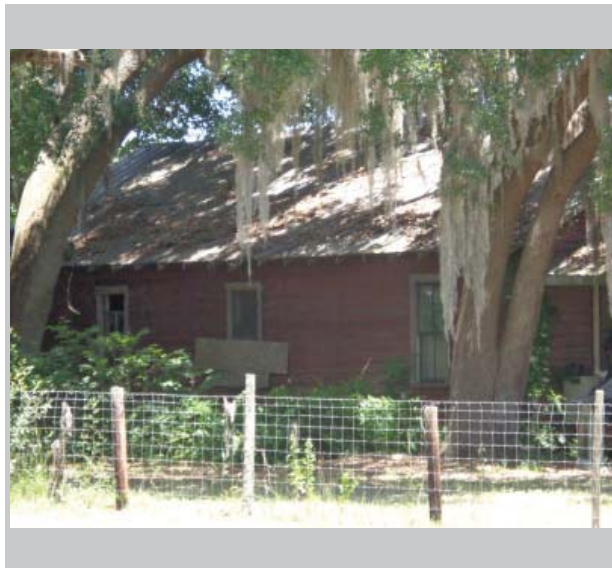
Brantley County Historic Resource

Field ID: BT-02
GNAHRGIS ID: 252988
County: Brantley
Preliminary NR Assessment: May Meet



391 Wire Road

Coordinates: 31.34006, -81.78085



Resource Type Building

Resource Use Residential: Single Family Dwelling

Date of Construction c. 1920

Building Type Bungalow: Front Gable

Structural System Balloon Frame

Style No Academic Style

Roof Gable: Front

Exterior Cladding Wood: Clapboard

Foundation Unknown

Porch Verandah

Windows Double Hung Sash: 2/2, Rectangle

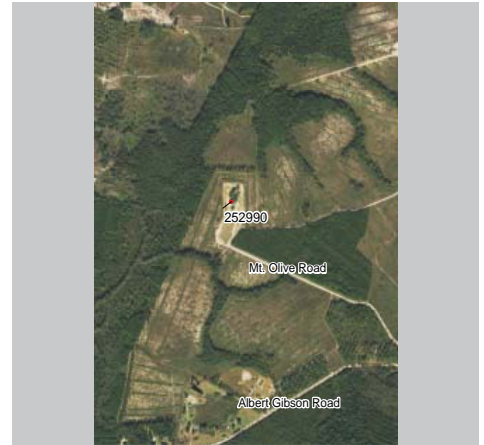
Chimney No Chimney Observed

Additional Notes Battered wood columns
Exposed rafter tails in side eaves
Original windows



Brantley County Historic Resource

Field ID: BT-03
GNAHRGIS ID: 252990
County: Brantley
Preliminary NR Assessment: May Meet



Mount Olive Cemetery
NW of Mt. Olive Rd and Post Rd Intersection

Coordinates: 31.28930, -81.75788



Resource Type Site

Resource Use Funerary: Cemetery

Date of Construction c. 1908

Common Names Jacobs, Moody, Harrison

≈ Number of Burials 200

Oldest Burial 1908

Burial Description CSA



Cemetery Description Three obelisks
Granite outlined family plots



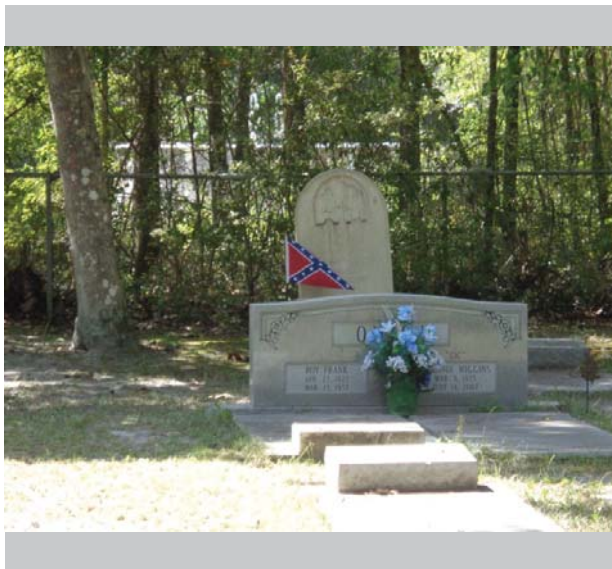
Brantley County Historic Resource

Field ID: BT-04
GNAHRGIS ID: 252998
County: Brantley
Preliminary NR Assessment: Does Not Meet: Age



1-399 Mineral Springs Road

Coordinates: 31.23523, -81.78403



Resource Type Site

Resource Use Funerary: Cemetery

Date of Construction c. 1900

Common Names Wiggins

≈ Number of Burials 25

Oldest Burial 1900

Burial Description CSA

Cemetery Description Mostly new
Fenced off, private



Brantley County Historic Resource

Field ID: BT-05
GNAHRGIS ID: 253007
County: Brantley
Preliminary NR Assessment: May Meet



West of State Rd 160 and
State Road 153 Intersection

Coordinates: 31.23888, -81.78185



Resource Type Site

Resource Use Funerary: Cemetery

Date of Construction c. 1912

Common Names Unknown

≈ Number of Burials 50

Oldest Burial 1912

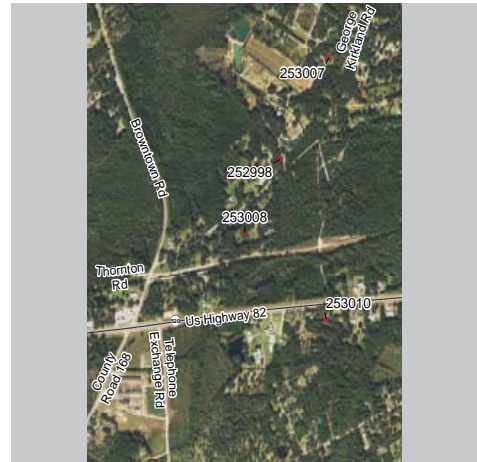
Burial Description Unknown

Cemetery Description Unreadable headstones
Unique names
Wrought-iron fencing
around graves
Two slab tombs



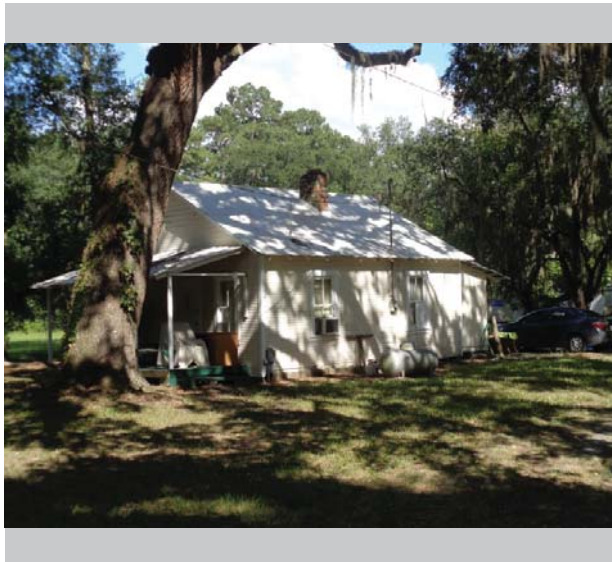
Brantley County Historic Resource

Field ID: BT-06
GNAHRGIS ID: 253008
County: Brantley
Preliminary NR Assessment: May Meet



1-399 Mineral Springs Road

Coordinates: 31.23260, -81.78558



Resource Type Building

Resource Use Domestic: Single Family Dwelling

Date of Construction c. 1920

Building Type Bungalow: Front Gable

Structural System Balloon Frame

Style No Academic Style

Roof Gable: Front

Exterior Cladding Wood: Clapboard

Foundation Pier: Concrete

Porch Verandah

Windows Double Hung Sash: 2/2, Rectangle

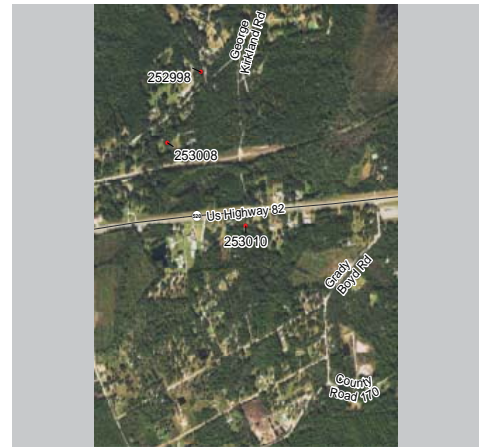
Chimney Lateral Interior: Brick

Additional Notes Exposed rafter tails
Original windows
Original clapboard
Rear addition



Brantley County Historic Resource

Field ID: BT-07
GNAHRGIS ID: 253010
County: Brantley
Preliminary NR Assessment: May Meet



Highsmith Cemetery
25736 US Highway 82

Coordinates: 31.22949, -81.78200



Resource Type Site

Resource Use Funerary: Cemetery

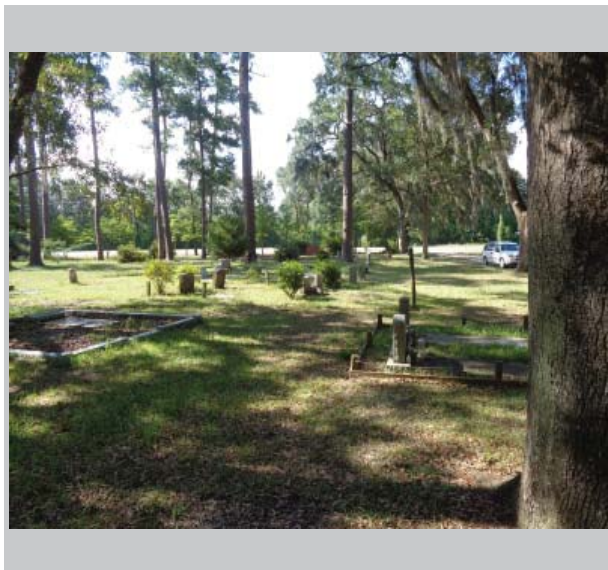
Date of Construction c. 1920

Common Names McSweeney, Roberson

≈ Number of Burials 150

Oldest Burial 1920

Burial Description Woodsman of the World

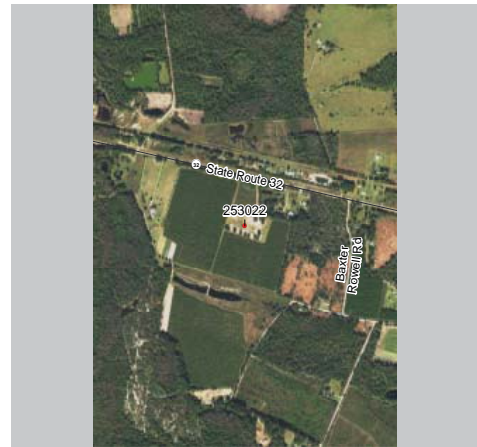


Cemetery Description Illegible headstones
Outlined family plots
Three chained off areas

THE UNIVERSITY OF GEORGIA
CE+D COLLEGE OF ENVIRONMENT + DESIGN

Brantley County Historic Resource

Field ID: BT-08
GNAHRGIS ID: 253022
County: Brantley
Preliminary NR Assessment: Does Not Meet: Age



Satilla Cemetery
 Near 2653 Georgia 32

Coordinates: 31.22949, -81.78200



Resource Type Site

Resource Use Funerary: Cemetery

Date of Construction c. 1970

Common Names Rowell, Carver, Boatright

≈ Number of Burials 100

Oldest Burial 1970

Burial Description N/A

Cemetery Description Outlined family plots
 Mostly new



Brantley County Historic Resource

Field ID: BT-09
GNAHRGIS ID: 253024
County: Brantley
Preliminary NR Assessment: May Meet



83 Wendols Road

Coordinates: 31.34472, -81.97176



- Resource Type** Building
- Resource Use** Domestic: Single Family Dwelling
- Date of Construction** c. 1960
- Building Type** Ranch
- Structural System** Balloon Frame
- Style** No Academic Style
- Roof** Hip
- Exterior Cladding** Brick: Common
- Foundation** Unknown
- Porch** Stoop
- Windows** Double Hung Sash: 2/2, Rectangle
- Chimney** Lateral Exterior: Brick
- Additional Notes** Pronounced tapered chimney on front facade
Chicago window
Wrought iron on stoop



Brantley County Historic Resource

Field ID: BT-10
GNAHRGIS ID: 253028
County: Brantley
Preliminary NR Assessment: May Meet



Hortense Wesleyan Camp Meeting
200-698 Tabernacle Road

Coordinates: 31.33184, -81.96030



Resource Type Site

Resource Use Religious: Campground

Date of Construction c. 1904

Building Type Unknown

Structural System Balloon Frame

Style No Academic Style

Roof Gable: Side, Pyramidal

Exterior Cladding Concrete block, Vinyl

Foundation Unknown

Porch N/A

Windows Double Hung Sash: 2/2,
Rectangle

Chimney No chimney observed

Additional Notes Church camp with 15
buildings
Mostly mid-century
7 dorms, 3 cabins



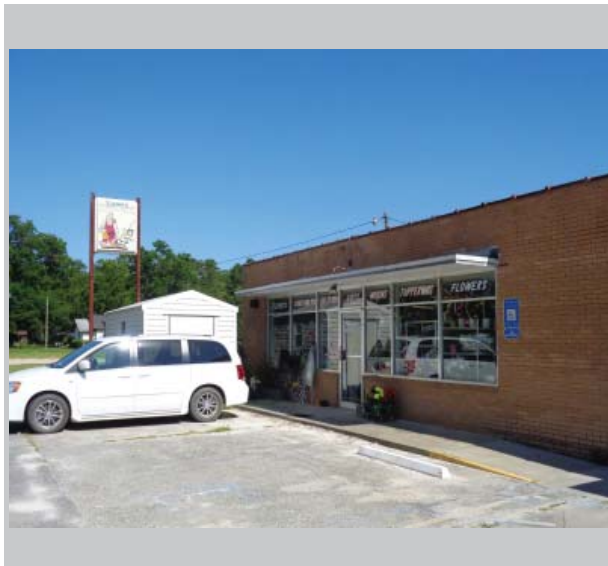
Brantley County Historic Resource

Field ID: BT-11
GNAHRGIS ID: 253029
County: Brantley
Preliminary NR Assessment: May Meet



US Post Office 31543
4779 Georgia 32

Coordinates: 31.33660, -81.95586

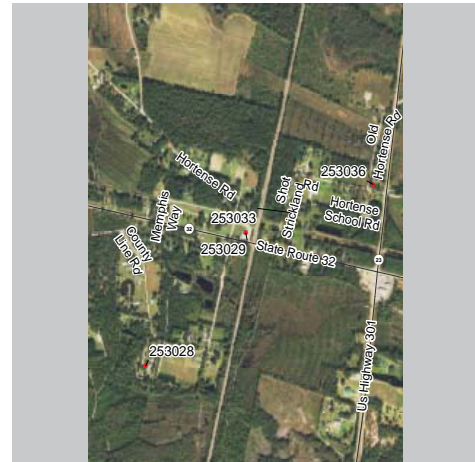


- Resource Type** Building
- Resource Use** Post Office, Retail Store
- Date of Construction** c. 1968
- Building Type** Commercial Storefront
- Structural System** Balloon Frame
- Style** No Academic Style
- Roof** Shed/Pent
- Exterior Cladding** Brick: Common
- Foundation** Unknown
- Porch** Stoop
- Windows** Fixed: 1/1, Rectangle
- Chimney** No chimney observed
- Additional Notes** Mid-century modern
Brick facade
Small porch at each entrance



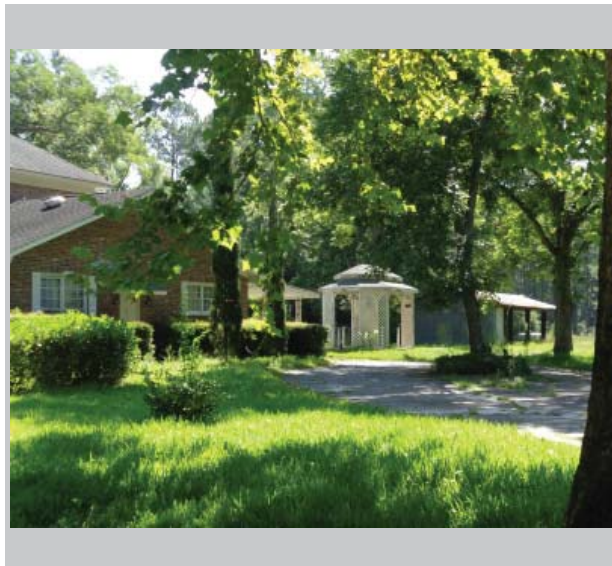
Brantley County Historic Resource

Field ID: BT-12
GNAHRGIS ID: 253033
County: Brantley
Preliminary NR Assessment: May Meet



2-98 University Drive

Coordinates: 31.33733, -81.95390



- Resource Type** Building
- Resource Use** Domestic: Single Family Dwelling
- Date of Construction** c. 1920
- Building Type** American Foursquare
- Structural System** Balloon Frame
- Style** No Academic Style
- Roof** Pyramidal
- Exterior Cladding** Brick: Common
- Foundation** Unknown
- Porch** Recessed
- Windows** Double Hung Sash: 6/6, Rectangle
- Chimney** No chimney observed
- Additional Notes** Side additions
Sidelights, fanlight on main entry door
Arched recessed entry



Brantley County Historic Resource

Field ID: BT-13
GNAHRGIS ID: 253036
County: Brantley
Preliminary NR Assessment: May Meet



200-298 Church Street

Coordinates: 31.33834, -81.95023



- Resource Type** Building
- Resource Use** Domestic: Single Family Dwelling
- Date of Construction** c. 1900
- Building Type** Gabled Ell Cottage
- Structural System** Balloon Frame
- Style** No Academic Style
- Roof** Gable: Multi
- Exterior Cladding** Wood: Clapboard
- Foundation** Pier: Brick
- Porch** Verandah
- Windows** Double Hung Sash: 2/2, Rectangle
- Chimney** No chimney observed
- Additional Notes** Original windows
Turned wood porch supports
Historic addition on left



Brantley County Historic Resource

Field ID: BT-14
GNAHRGIS ID: 253038
County: Brantley
Preliminary NR Assessment: May Meet



Intersection of State Rd 139 and
Old Hortense Road

Coordinates: 31.34563, -81.94054



Resource Type Building

Resource Use Domestic: Single Family Dwelling

Date of Construction c. 1930

Building Type Bungalow: Front Gable

Structural System Balloon Frame

Style No Academic Style

Roof Gable: Front

Exterior Cladding Prism Synthetics: Asbestos Siding

Foundation Unknown

Porch Verandah

Windows Unknown

Chimney Lateral Exterior: Brick

Additional Notes Vent in front gable
Foundation covered
Screened porch
Screened windows



Brantley County Historic Resource

Field ID: BT-15
GNAHRGIS ID: 253041
County: Brantley
Preliminary NR Assessment: May Meet



Near Intersection of Ballfield Road
and Brick Church Road

Coordinates: 31.32845, -81.93810



Resource Type Site

Resource Use Funerary: Cemetery

Date of Construction c. 1870

Common Names Nicholls, Strickland,
Roberson

≈ Number of Burials 300

Oldest Burial 1870

Burial Description Confederate Soldiers

Cemetery Description Granite outlined family plots
Medium sized obelisks
Brick above-ground tomb
Active use
Mostly new graves
Victorian gated area
Front gable brick church
Stained glass windows, c. 1945

THE UNIVERSITY OF GEORGIA
CE+D COLLEGE OF ENVIRONMENT + DESIGN

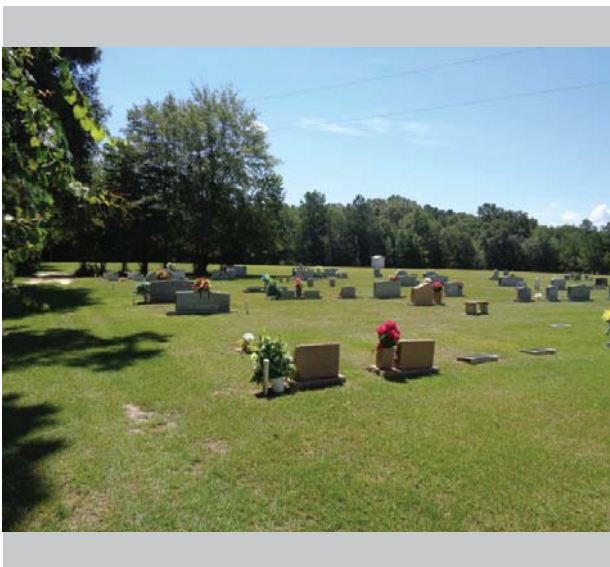
Brantley County Historic Resource

Field ID: BT-16
GNAHRGIS ID: 253042
County: Brantley
Preliminary NR Assessment: Does Not Meet:



Twin Rivers Chapel Cemetery
 18890 Georgia 23

Coordinates: 31.30959, -81.95257



Resource Type Site

Resource Use Funerary: Cemetery

Date of Construction c. 1960

Common Names Strickland, Rowell, Sloan

≈ Number of Burials 50

Oldest Burial 1960

Burial Description Unknown

Cemetery Description Non-contributing church
 Mostly new
 Small and large
 headstones
 Family plots



Brantley County Historic Resource

Field ID: BT-17
GNAHRGIS ID: 253048
County: Brantley
Preliminary NR Assessment: May Meet



9690 Trudie Road

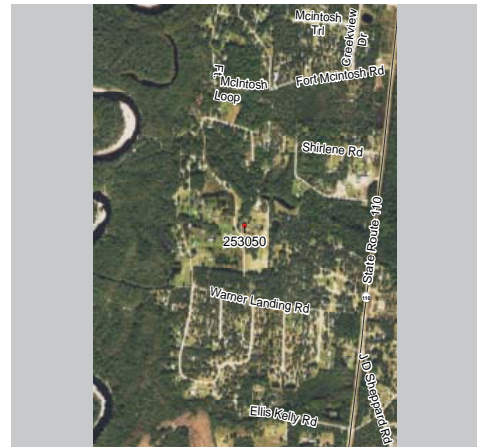
Coordinates: 31.30485, -81.99253



Resource Type Building
Resource Use Residential: Single Family Dwelling
Date of Construction c. 1900
Building Type Extended Hall Parlor
Structural System Balloon Frame
Style No Academic Style
Roof Gable: Side
Exterior Cladding Wood: Weatherboard
Foundation Unknown
Porch Verandah
Windows Double Hung Sash: 3/1, Rectangle
Chimney Gable-End Exterior, Lateral Interior: Brick
Additional Notes Historic addition
Windows original
New siding on porch facade

THE UNIVERSITY OF GEORGIA
CE+D COLLEGE OF ENVIRONMENT + DESIGN
Brantley County
Historic Resource

Field ID: BT-18
GNAHRGIS ID: 253050
County: Brantley
Preliminary NR Assessment: Does Not Meet:



Ammons Cemetery
 199 Twin Flower Trail

Coordinates: 31.24185, -81.85521



Resource Type Site

Resource Use Funerary: Cemetery

Date of Construction c. 1890

Common Names Keysler, Ammons

≈ Number of Burials 100

Oldest Burial 1890

Burial Description Confederate soldiers

Cemetery Description Mostly new
 Granite ledger stones
 One brick above ground tomb
 Some small obelisks



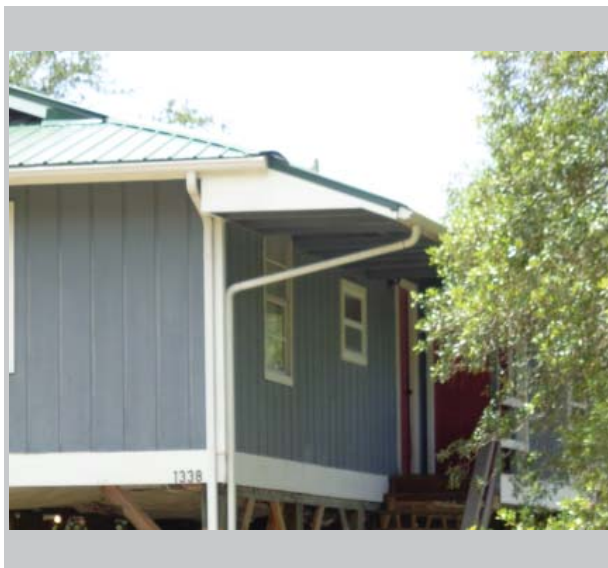
Brantley County Historic Resource

Field ID: BT-19
GNAHRGIS ID: 253052
County: Brantley
Preliminary NR Assessment: May Meet



On Warner's Landing near Satilla River

Coordinates: 31.2397, -81.86929

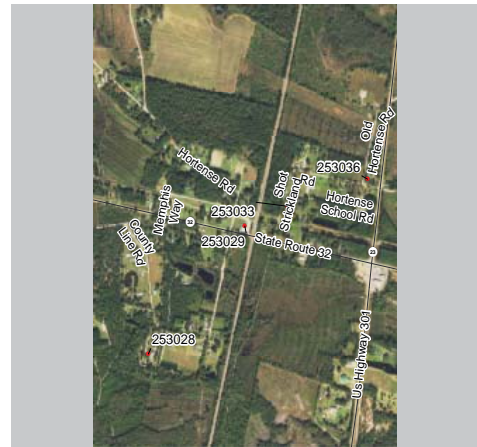


- Resource Type** Building
- Resource Use** Residential: Single Family Dwelling
- Date of Construction** 1960
- Building Type** Ranch
- Structural System** Balloon Frame
- Style** No Academic Style
- Roof** Gable:Side
- Exterior Cladding** Wood: Vertical Board
- Foundation** Pier: Wood
- Porch** Verandah
- Windows** Double Hung Sash: 6/6, Rectangular
- Chimney** No Chimney Observed
- Additional Notes** Hip on gable roof. Linear ranch on stilts. Part of community stilted. Vacation homes.

THE UNIVERSITY OF GEORGIA
COLLEGE OF ENVIRONMENT + DESIGN
CE+D

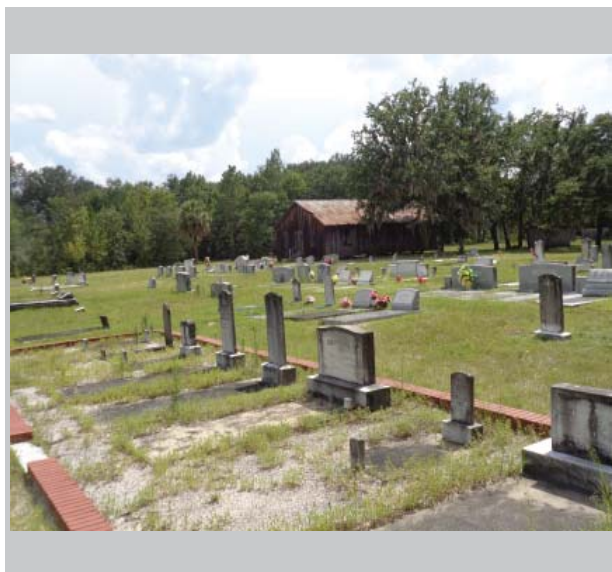
Brantley County Historic Resource

Field ID: BC-20
GNAHRGIS ID: 253053
County: Brantley
Preliminary NR Assessment: Does Not Meet



Pilgrim's Rest Cemetery
 Near the end of Old Waynesville Road

Coordinates: 31.21195, -81.80790



Resource Type Site

Resource Use Funerary: Cemetery

Date of Construction 1915

Common Names Hozier, Cooper

≈ Number of Burials 150

Oldest Burial 1915

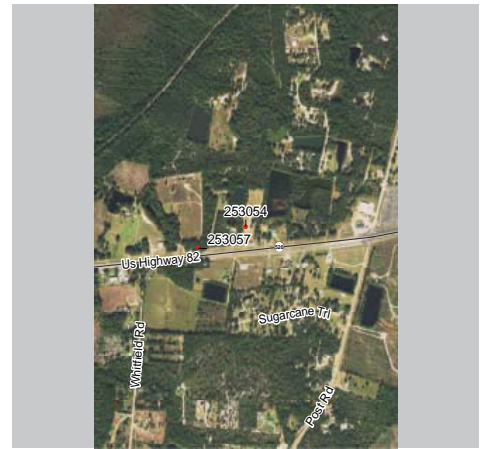
Burial Description CSA

Cemetery Description Active Use. Mostly new, 150 graves. Granite outlined family plots. Granite ledger stones. Non-contributing church. Several small obelisks.



Brantley County Historic Resource

Field ID: BT-21
GNAHRGIS ID: 253054
County: Brantley
Preliminary NR Assessment: May Meet



Little Rock Masonic Cemetery
26641 U.S. 82

Coordinates: 31.23220, -81.76626



Resource Type Site

Resource Use Funerary: Cemetery

Date of Construction 1914

Common Names Simmons, Richardson, King

≈ Number of Burials 200

Oldest Burial 1914

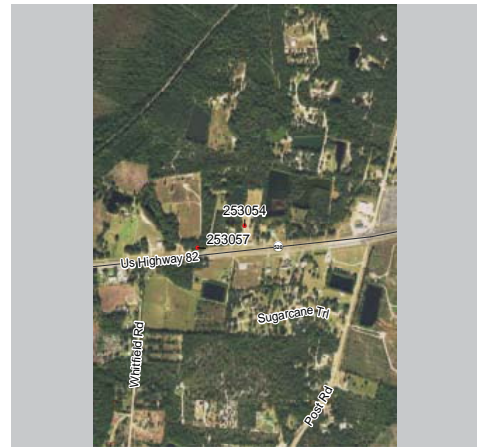
Burial Description Free Masons

Cemetery Description Active Use. Some small obelisks. Decorative headstones. Granite and brick outlined family plots. Fenced and surrounded by woods. Non-contributing church.

THE UNIVERSITY OF GEORGIA
CE+D COLLEGE OF ENVIRONMENT + DESIGN

Brantley County Historic Resource

Field ID: BT-22
GNAHRGIS ID: 253055
County: Brantley
Preliminary NR Assessment: Does Not Meet



Daniel's Cemetery
 514 Georgia 10

Coordinates: 31.15120, -81.78790



Resource Type Site

Resource Use Funerary: Cemetery

Date of Construction 1960

Common Names Daniels, Kirkland, Ammons

≈ Number of Burials 250

Oldest Burial 1960

Burial Description N/A

Cemetery Description Active use. Outlined family plots.



Brantley County Historic Resource

Field ID: BT-23
GNAHRGIS ID: 253059
County: Brantley
Preliminary NR Assessment: May Meet



Sand Hill Cemetery
2027 Old State Route 259

Coordinates: 31.12569, -81.86340



Resource Type Site

Resource Use Funerary: Cemetery

Date of Construction 1913

Common Names Easton, Clark

≈ Number of Burials N/A

Oldest Burial 1913

Burial Description N/A

Cemetery Description Small graves.
Small concrete headstones.
Small outlined family plots.
Concrete ledger stones.



Brantley County Historic Resource

Field ID: BT-24
GNAHRGIS ID: 253060
County: Brantley
Preliminary NR Assessment: May Meet



5 Red Cohen Road

Coordinates: 31.13226, -81.86779



Resource Type Building

Resource Use Residential: Single Family Dwelling

Date of Construction 1900

Building Type Single Pen

Structural System Balloon Frame

Style No Academic Style

Roof Gable:Side

Exterior Cladding Wood: Vertical Board

Foundation Pier: Concrete

Porch Verandah

Windows Unknown

Chimney No Chimney Observed

Additional Notes Windows not original. Old fish camp. Kitchen addition on back. On concrete blocks.



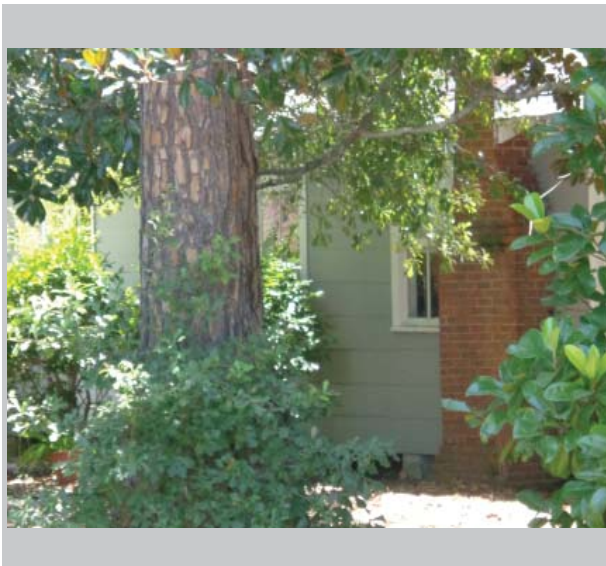
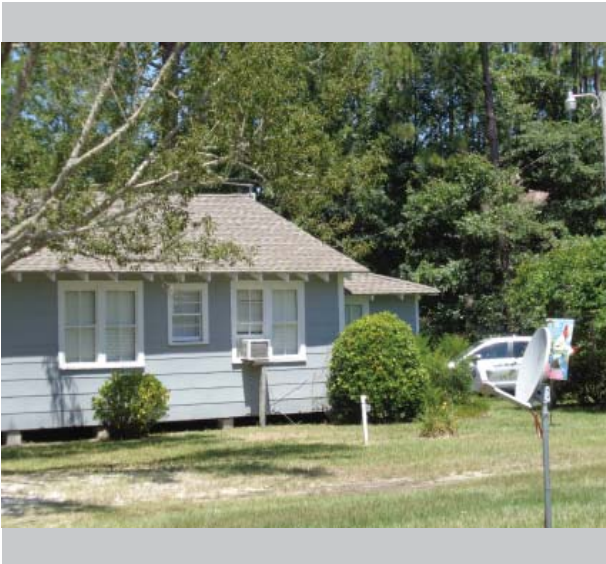
Brantley County Historic Resource

Field ID: BT-25
GNAHRGIS ID: 253067
County: Brantley
Preliminary NR Assessment: May Meet



1-199 Ern Road

Coordinates: 31.25340, -81.99893

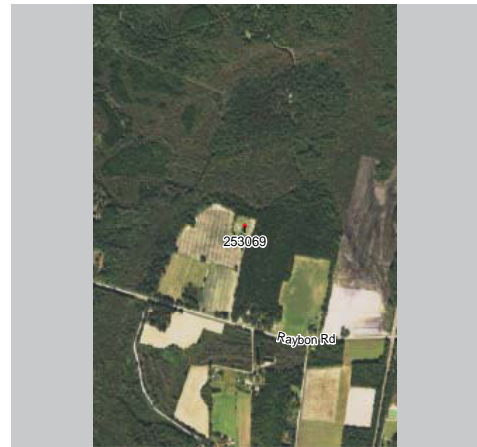


- Resource Type** Building
- Resource Use** Residential: Single Family Dwelling
- Date of Construction** 1930
- Building Type** Bungalow: Front
- Structural System** Balloon Frame
- Style** No Academic Style
- Roof** Gable: Front
- Exterior Cladding** Synthetic: Masonite
- Foundation** Pier:Brick
- Porch** Verandah
- Windows** Double Hung Sash: 2/2 Rectangular
- Chimney** Lateral Exterior: Brick
- Additional Notes** Turned wood porch supports. Exposed rafter tails. Circular vent in front gable. Poss back addition.



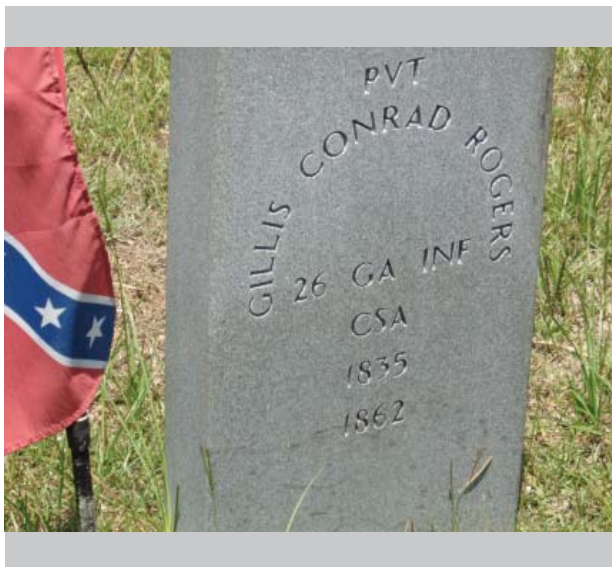
Brantley County Historic Resource

Field ID: BT-26
GNAHRGIS ID: 253069
County: Brantley
Preliminary NR Assessment: Does Not Meet



Lewis Cemetery
Near 12847 Raybon Road West

Coordinates: 31.26705, -81.97894



Resource Type Site

Resource Use Funerary: Cemetery

Date of Construction 1862

Common Names Lewis, Morgan

≈ Number of Burials 200 Graves

Oldest Burial 1862

Burial Description CSA

Cemetery Description Active Use. Several small obelisks. Granite ledger stones. Outlined family plots. Many smaller headstones. Non-contributing church. Fenced off areas. 10 CSA graves.



Brantley County Historic Resource

Field ID: BT-27
GNAHRGIS ID: 253070
County: Brantley
Preliminary NR Assessment: Does Not Meet



Bethlehem Cemetery
Near 4813 Bachlott Church Road

Coordinates:



Resource Type Site

Resource Use Funerary: Cemetery

Date of Construction 1900

Common Names Crews

≈ Number of Burials 350

Oldest Burial 1900

Burial Description CSA

Cemetery Description Active Use. Mostly new. Granite ledger stones. Outlined family plots. Non-contributing church. 3 wooden headstones. Wood enclosures.



Brantley County Historic Resource

Field ID: BT-28
GNAHRGIS ID: 253071
County: Brantley
Preliminary NR Assessment: May Meet



527 County Road 79

Coordinates: 31.12065, -81.96463



Resource Type Building

Resource Use Residential: Single Family Dwelling

Date of Construction 1920

Building Type Bungalow: Side Gable

Structural System Balloon Frame

Style Craftsman

Roof Gable:Side

Exterior Cladding Wood: Weatherboard

Foundation Pier: Concrete

Porch Verandah

Windows Double Hung Sash: 3/1, Rectangular

Chimney Gable End Exterior: Brick

Additional Notes Craftsman: 2 paired 3/1 windows either side of door. Exposed rafters. Poured concrete found.



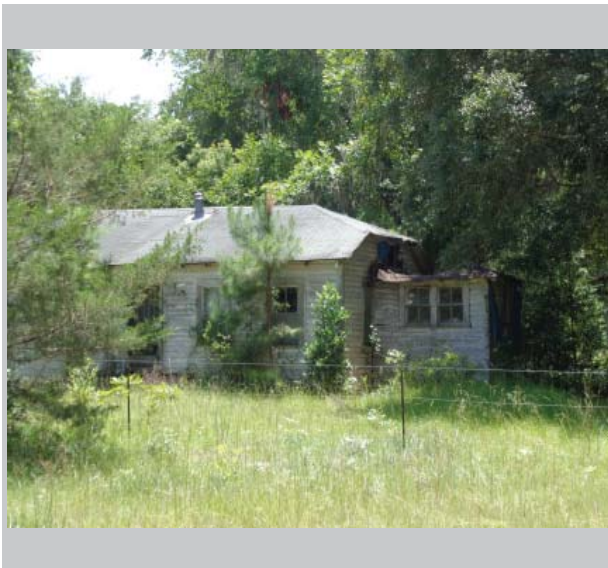
Brantley County Historic Resource

Field ID: BT-29
GNAHRGIS ID: 253073
County: Brantley
Preliminary NR Assessment: May Meet



SE of County Rd 82 and Joe Knox Rd

Coordinates: 31.11927, -81.94805

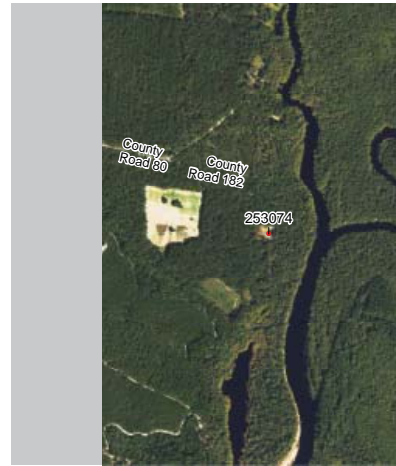


- Resource Type** Building
- Resource Use** Vacant
- Date of Construction** 1920
- Building Type** Bungalow: Side Gable
- Structural System** Balloon Frame
- Style** Craftsman
- Roof** Gable:Side
- Exterior Cladding** Wood: Weatherboard
- Foundation** Unknown
- Porch** Stoop
- Windows** Double Hung Sash: 2/2, Rectangular
- Chimney** No Chimney Observed
- Additional Notes** Craftsman style doors and windows. Central chimney pot. Side hip on gable. Collapsing addition on R.



Brantley County Historic Resource

Field ID: BT-30
GNAHRGIS ID: 253074
County: Brantley
Preliminary NR Assessment: Does Not Meet



Dowling C
At the end of County

Coordinates: 31.08898,-81.1



Resource Type Site

Resource Use Funerary: Cemetery

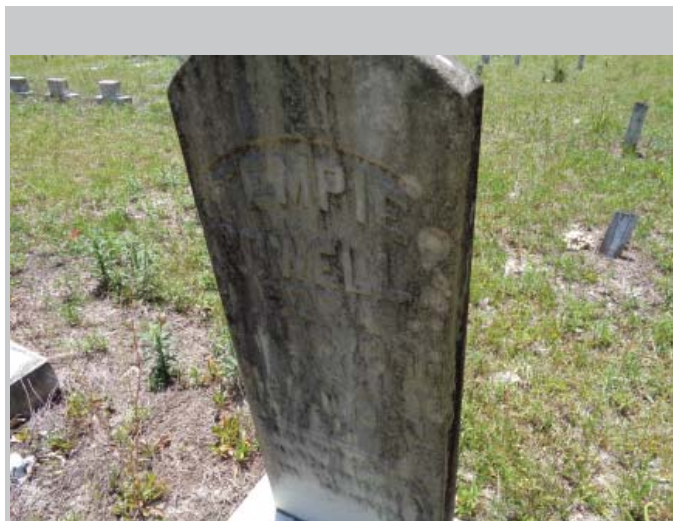
Date of Construction 1889

Common Names O'Quinn, Rowell,

≈ Number of Burials 150

Oldest Burial 1889

Burial Description CSA



Cemetery Description Active Use. Sever
marked with sticl
Outlined family p
Ledger stones. Cl
fence surroundin
cemetery.



Brantley County Historic Resource

Field ID: BT-31
GNAHRGIS ID: 253075
County: Brantley
Preliminary NR Assessment: Does Not Meet



Oak Grove Cemetery
10925 Raybon Road West

Coordinates: 31.26703, -81.00612



Resource Type Site

Resource Use Funerary: Cemetery

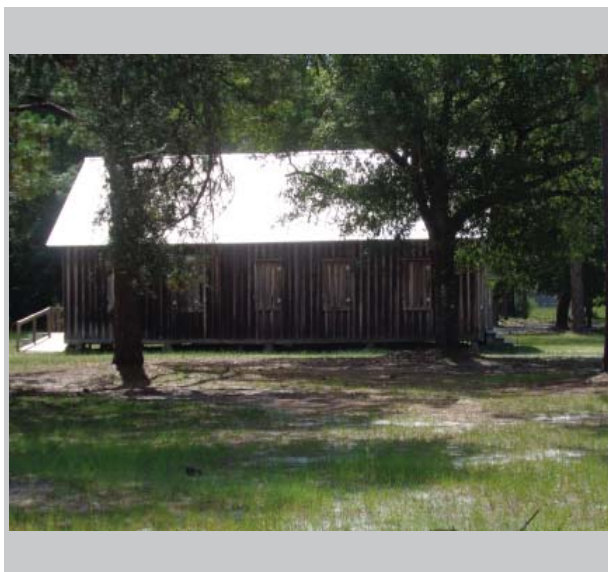
Date of Construction 1906

Common Names Herron, Morgan

≈ Number of Burials 150

Oldest Burial 1906

Burial Description CS



Cemetery Description Active use.
Non-contributing church.
2 wrought iron enclosures.
Granite ledger stones.
Outlined family plots. 4
CSA. Several obelisks.



Brantley County Historic Resource

Field ID: BT-32
GNAHRGIS ID: 253025
County: Brantley
Preliminary NR Assessment: May Meet



Smyrna Church
Smyrna Church Rd, 150 yds N of Gilman Rd
Coordinates: 31.238918, -81.889426



Resource Type Building

Resource Use Religious: Church

Date of Construction 1940

Building Type Single Pen: Rectangle

Structural System Balloon Frame

Style No Academic Style

Roof Gable: Front

Exterior Cladding Wood: Vertical Board

Foundation Pier: Concrete

Porch Stoop

Windows Unknown

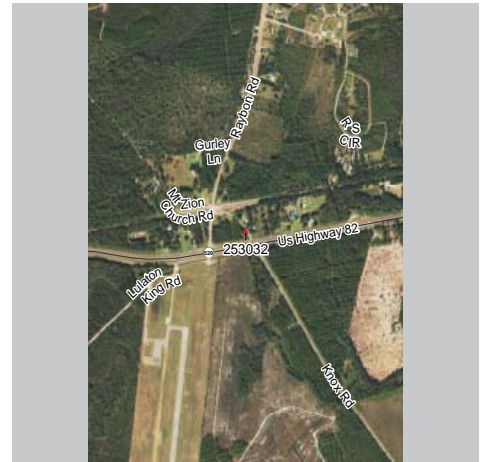
Chimney No Chimney Observed

Additional Notes Graveyard: CSA, mausoleums. Active use, oldest date 1901. Wood church. Est. 1824.



Brantley County Historic Resource

Field ID: BT-33
GNAHRGIS ID: 253032
County: Brantley
Preliminary NR Assessment: May Meet



Seed Orchard Rd and 82, W Corner (21536 Rayborn)

Coordinates: 31.214767, -81.902529



- Resource Type** Building
- Resource Use** Residential: Single Family Dwelling
- Date of Construction** 1950
- Building Type** Unknown
- Structural System** Balloon Frame
- Style** No Academic Style
- Roof** Hip
- Exterior Cladding** Wood: Brick
- Foundation** Unknown
- Porch** Recessed
- Windows** Double Hung Sash: 2/2, Rectangular. 4/4 Fixed.
- Chimney** No Chimney Observed
- Additional Notes** Obscured by vegetation. Different colored brick sections on side and porch. Fixed window on R.



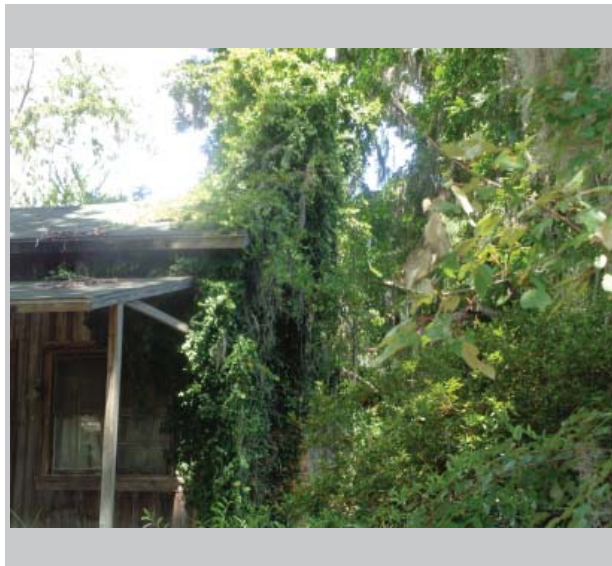
Brantley County Historic Resource

Field ID: BT-34
GNAHRGIS ID: 253011
County: Brantley
Preliminary NR Assessment: May Meet



838 Smyrna Church Road

Coordinates: 31.218034, -82.891545



Resource Type Building

Resource Use Residential: Single Family Dwelling

Date of Construction 1910

Building Type Central Hallway

Structural System Balloon Frame

Style No Academic Style

Roof Gable:Side

Exterior Cladding Wood: Vertical Board

Foundation Pier: Concrete

Porch Verandah

Windows Double Hung Sash: 2/2, Rectangular

Chimney Lateral Exterior: Brick

Additional Notes Rear historic addition. Veg. obscures sides. Slim wood posts, not uniform. Paired DHS windows.



Brantley County Historic Resource

Field ID: BC-35
GNAHRGIS ID: 253014
County: Brantley
Preliminary NR Assessment: Does Not Meet



Knox Cemetery
On Knox Cemetery Rd, .5 mi E of Knox Rd
Coordinates: 31.154479, -81.903479



Resource Type Site

Resource Use Funerary: Cemetery

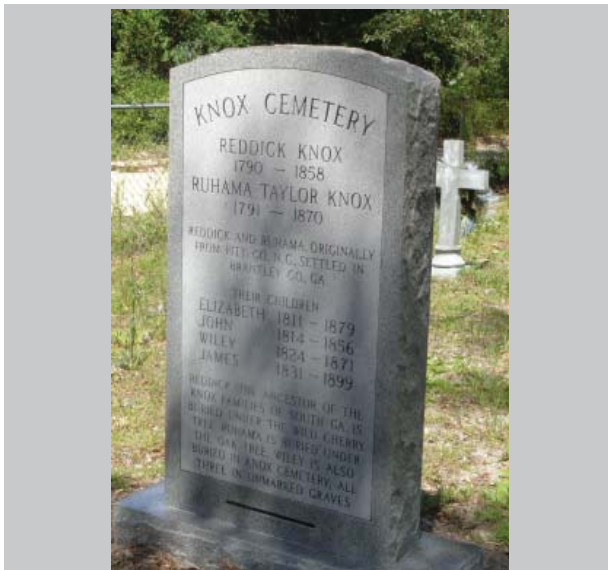
Date of Construction 1852

Common Names Knox, O'Neal, Wainwright

≈ Number of Burials 75

Oldest Burial 1852

Burial Description CSA, Vietnam, Indian War, WWI, WWII.



Cemetery Description Chain link fence surrounds. Early 1900's mostly but an "older" section in the middle. Unmarked graves. Shade trees: Cypress, Cherry and Oak. Knox Cemetery marker. Wooden graves and crosses present w/ no writing.



Brantley County Historic Resource

Field ID: BT-36
GNAHRGIS ID: 253043
County: Brantley
Preliminary NR Assessment: May Meet



528 White Ford road

Coordinates: 31.13696, -81.97333



Resource Type Building

Resource Use Residential: Single Family Dwelling

Date of Construction 1910

Building Type Dogtrot

Structural System Balloon Frame

Style No Academic Style

Roof Gable:Side

Exterior Cladding Wood: Weatherboard

Foundation Unknown

Porch Verandah

Windows Double Hung Sash: 2/2

Chimney Off-center Within Roof Surface: Brick

Additional Notes Side and rear additions Obscured by vegetation Original opening between block still extant

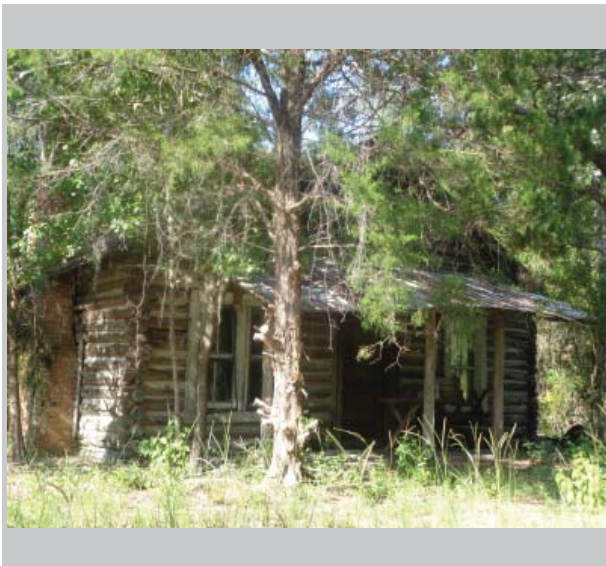


Brantley County Historic Resource

Field ID: BT-37
GNAHRGIS ID: 253061
County: Brantley
Preliminary NR Assessment: May Meet



Coordinates:

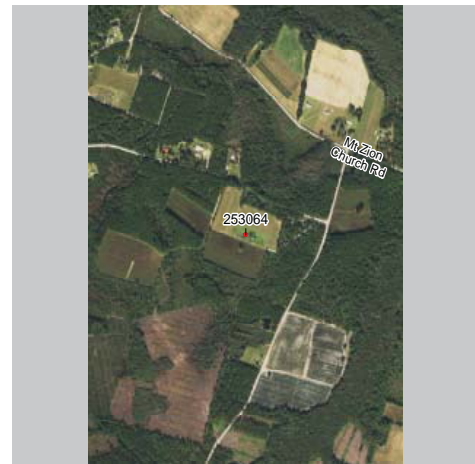


- Resource Type** Building
- Resource Use** Vacant
- Date of Construction** 1910
- Building Type** Central Hallway
- Structural System** Balloon Frame
- Style** No Academic Style
- Roof** Gable:front
- Exterior Cladding** Wood: log
- Foundation** Unknown
- Porch** Verandah
- Windows** Double Hung Sash: 2/2
- Chimney** Ridgeline, center: Brick
- Additional Notes** Log construction with original chinking
Possible rear addition



Brantley County Historic Resource

Field ID: BT-38
GNAHRGIS ID: 253064
County: Brantley
Preliminary NR Assessment: May Meet



Cecil Herrin Loop approx 380 yards from Ern Rd.

Coordinates: 31.24986, -81.98716



Resource Type Building

Resource Use residential: Single Family Dwelling

Date of Construction 1910

Building Type Extended Hall-parlor

Structural System Balloon Frame

Style No Academic Style

Roof Gable: side

Exterior Cladding Wood: Weatherboard

Foundation Pier: brick

Porch Verandah

Windows Double Hung Sash: 2/2

Chimney Center, ridgeline: brick

Additional Notes Right side porch enclosure
Replacement materials



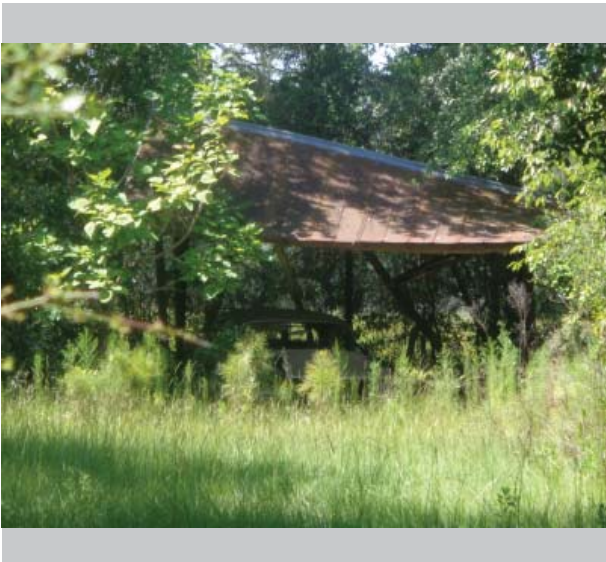
Brantley County Historic Resource

Field ID: BT-39
GNAHRGIS ID: 253004
County: Brantley
Preliminary NR Assessment: May Meet



Central Ave b/w Ginger Ln & Gus Aldridge Ln

Coordinates: 31.195832, -82.218113

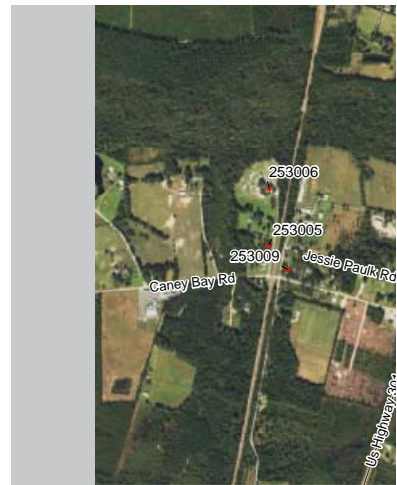


- Resource Type** Building
- Resource Use** Residential: Single Family Dwelling
- Date of Construction** 1940
- Building Type** Bungalow: Front gable
- Structural System** Balloon Frame
- Style** No Academic Style
- Roof** Gable: Front
- Exterior Cladding** Wood: Weatherboard
- Foundation** Unknown
- Porch** Verandah
- Windows** Double Hung Sash: 4/1, Rectangular
- Chimney** Lateral Exterior: Brick
- Additional Notes** Alum. siding around foundation and in gable. Mid century awnings. Missing porch supports.



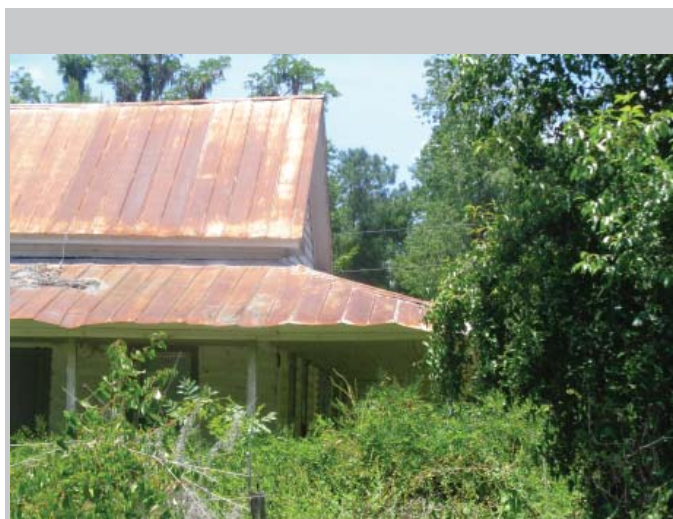
Brantley County Historic Resource

Field ID: BT-40
GNAHRGIS ID: 253005
County: Brantley
Preliminary NR Assessment: May Meet



New Hope Rd, next to

Coordinates: 31.15122, -81.

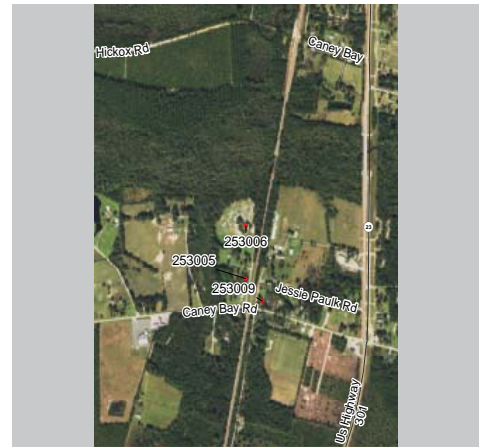


- Resource Type** Building
- Resource Use** Vacant
- Date of Construction** 1920
- Building Type** Double Pen
- Structural System** Balloon Frame
- Style** No Academic Sty
- Roof** Gable:Side
- Exterior Cladding** Wood: Weatherb
- Foundation** Unknown
- Porch** Wrap Around
- Windows** Double Hung Sas Rectangular
- Chimney** Gable End Exteri
- Additional Notes** Wrap around por
historic addition.
doors > windows



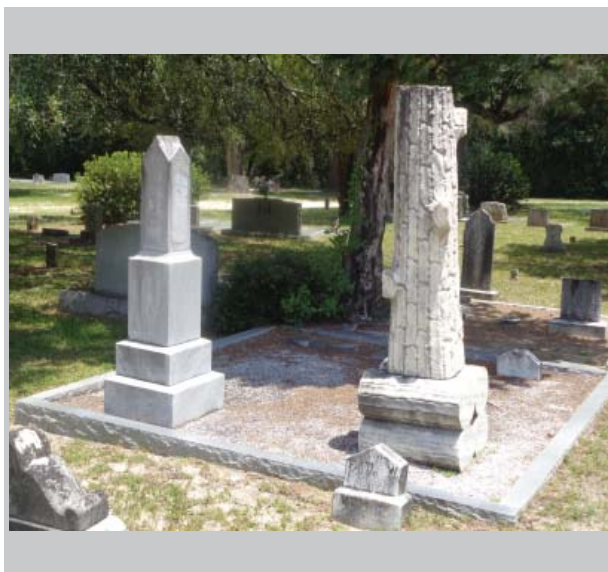
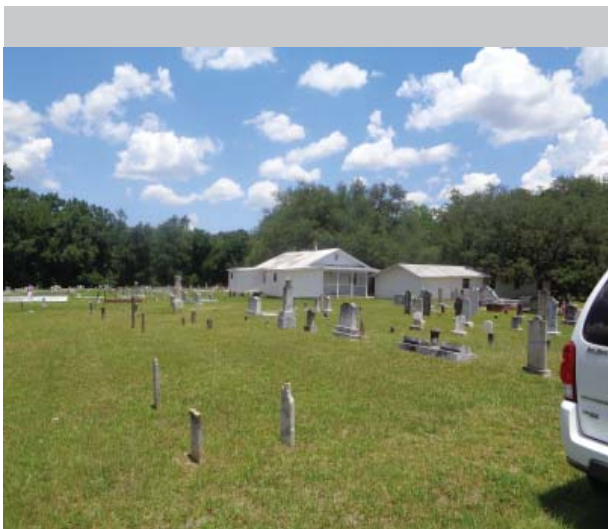
Brantley County Historic Resource

Field ID: BC-41
GNAHRGIS ID: 253006
County: Brantley
Preliminary NR Assessment: Does Not Meet



New Hope Church Cemetery
End of New Hope Road

Coordinates: 31.15290, -81.99727



Resource Type Site

Resource Use Funerary: Cemetery

Date of Construction 1861

Common Names Underwood, Harris, Jones, Thomas, Wainwright

≈ Number of Burials 150

Oldest Burial 1861

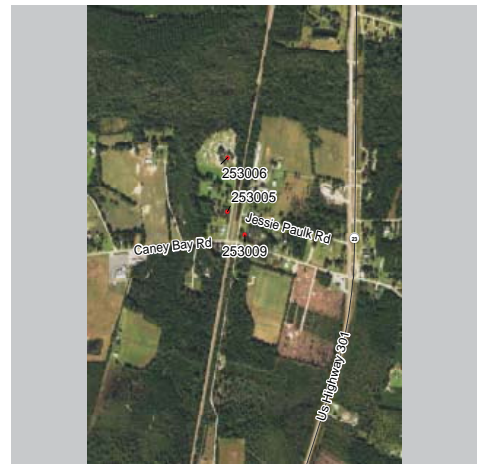
Burial Description CSA, WWI, WWII, Woodsmen of America

Cemetery Description Active use and maintained by church. 50 % old and 50% new. Non-contributing church on property. Open field surrounded by natural forest. Shade trees and driving path. Outlined family plots and a New Hope Cemetery brick sign.

THE UNIVERSITY OF GEORGIA
COLLEGE OF ENVIRONMENT + DESIGN
CE+D

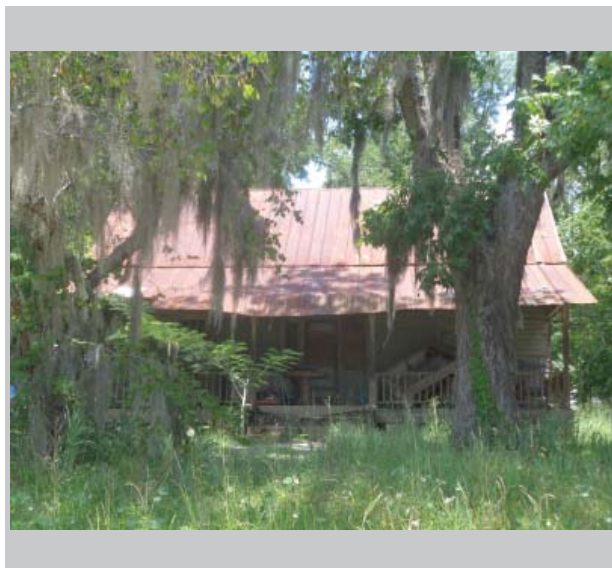
Brantley County Historic Resource

Field ID: BT-42
GNAHRGIS ID: 253009
County: Brantley
Preliminary NR Assessment: May Meet



7545 Hoke Circle / Caney Bay

Coordinates: 31.15058, -81.99662



Resource Type Building

Resource Use Residential: Single Family Dwelling

Date of Construction 1910

Building Type Central Hallway

Structural System Balloon Frame

Style No Academic Style

Roof Gable:Side

Exterior Cladding Wood: Weatherboard

Foundation Pier with Infill:Brick

Porch Verandah

Windows Double Hung Sash: 4/4, Rectangular

Chimney Gable End Exterior: Brick

Additional Notes Multiple additions. Vent in side gable. Wood railing. Decorative wood supports. Sidelights.



Brantley County Historic Resource

Field ID: BT-43
GNAHRGIS ID: 253012
County: Brantley
Preliminary NR Assessment: May Meet



2148 Sears Road

Coordinates: 31.18797, -82.00645



- Resource Type** Building
- Resource Use** Residential: Single Family Dwelling
- Date of Construction** 1910
- Building Type** Central Hallway
- Structural System** Balloon Frame
- Style** No Academic Style
- Roof** Gable:Side
- Exterior Cladding** Wood: Weatherboard
- Foundation** Unknown
- Porch** Verandah
- Windows** Unknown
- Chimney** No Chimney Observed
- Additional Notes** Carport addition.
Materials replaced.
Windows can't be seen because of vegetation.



Brantley County Historic Resource

Field ID: BT-44
GNAHRGIS ID: 253017
County: Brantley
Preliminary NR Assessment: May Meet



Fire Tower
On HWY 82, .5 mi W of Silas Harris Rd
Coordinates: 31.189393, -82.080005



Resource Type Structure

Resource Use Fire Tower

Date of Construction 1960

Building Type N/A

Structural System N/A

Style No Academic Style

Roof Pyramidal

Exterior Cladding Steel

Foundation N/A

Porch N/A

Windows Double Hung Sash: 12/12,
Factory Sash

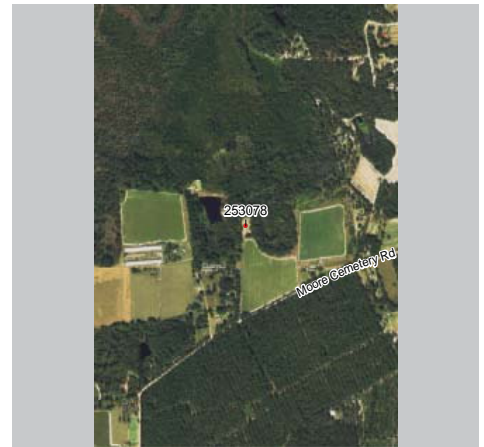
Chimney No Chimney Observed

Additional Notes Lookout fire tower. Chain link fence surrounding. Metal appears to be rusting. Off HWY 82.



Brantley County Historic Resource

Field ID: BT-45
GNAHRGIS ID: 253078
County: Brantley
Preliminary NR Assessment: Does Not Meet



Moore Cemetery
Unmarked rd off Saddle Club Rd

Coordinates: 31.224355, -82.131275



Resource Type Site

Resource Use Funerary: Cemetery

Date of Construction 1901

Common Names Roberson, Raulerson, Dowling, Petty.

≈ Number of Burials 50-60

Oldest Burial 1901

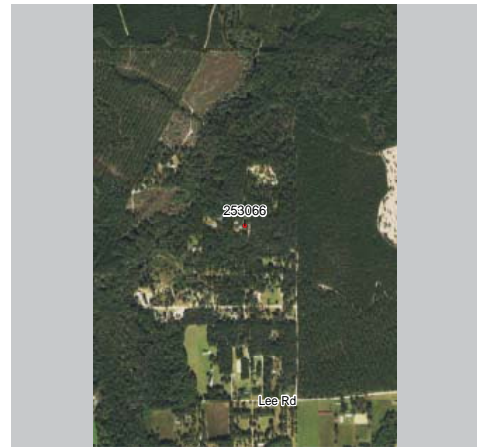
Burial Description CSA

Cemetery Description Open, flat field. Unmarked grassy road to cemetery surrounded by natural forest on 3 sides & ag field on 1 small new section. Front - active use. Mostly upright granite; footstones family cemetery. Decorative shells on stage. Several said just 'the -- family'.

THE UNIVERSITY OF GEORGIA
COLLEGE OF ENVIRONMENT + DESIGN
CE+D

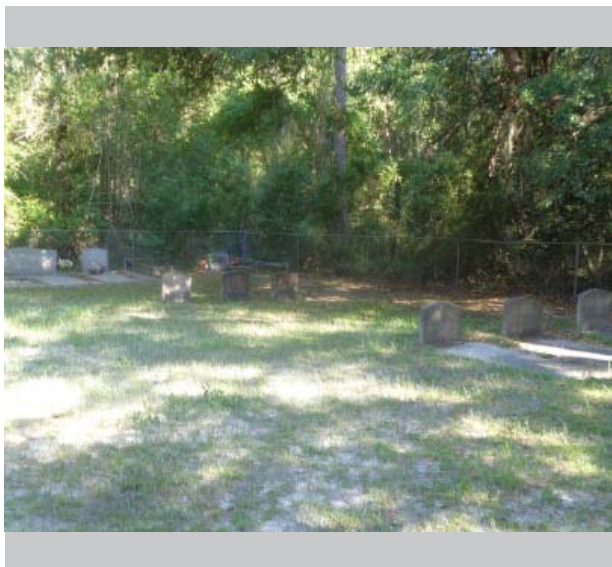
Brantley County Historic Resource

Field ID: BT-46
GNAHRGIS ID: 253066
County: Brantley
Preliminary NR Assessment: Does Not Meet



Thrift Cemetery
 Creek Drive, ~.5 N of Mars Hill Rd

Coordinates: 31.20033, -82.16584



Resource Type Site

Resource Use Funerary: Cemetery

Date of Construction 1919

Common Names Hickox, Cox

≈ Number of Burials 40

Oldest Burial 1919

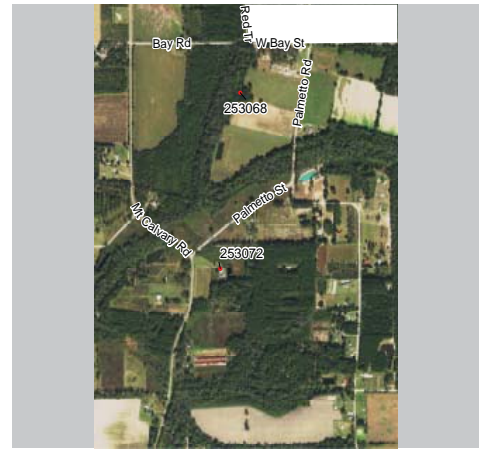
Burial Description N/A

Cemetery Description Active use. One decorative metal outlined plot with metal pipe. 1 outlined with metal wire and concrete. Mostly upright granite headstones. Shade trees and shrubs. Maintained. Chain link fence surrounds. Brick post with metal arch at entry.



Brantley County Historic Resource

Field ID: BT-47
GNAHRGIS ID: 253068
County: Brantley
Preliminary NR Assessment: May Meet



Martin Cemetery
Deadend of Red Trail, south of Bay Rd
Coordinates: 31.166101, -82.146991



Resource Type Site
Resource Use Funerary: Cemetery
Date of Construction 1905
Common Names Martin, Woodard, Wainwright
≈ Number of Burials 13
Oldest Burial 1905
Burial Description WWII
Cemetery Description No longer active use. Overgrown road leading to small circular field surrounded by natural forest. All flat granite headstone, uniform and in rows. Shade trees, slightly overgrown. Some stones without dates.



Brantley County Historic Resource

Field ID: BT-48
GNAHRGIS ID: 253072
County: Brantley
Preliminary NR Assessment: May Meet



1711 Mt. Calvary Church Rd

Coordinates: 31.159565, -82.147908



Resource Type Building

Resource Use Residential: Single Family Dwelling

Date of Construction 1930

Building Type Bungalow: Front Gable

Structural System Balloon Frame

Style No Academic Style

Roof Gable: Front

Exterior Cladding Wood: Weatherboard

Foundation Pier: Concrete

Porch Verandah

Windows Unknown

Chimney No Chimney Observed

Additional Notes Rectangular vent in gable. Brick pier with wood porch supports, battered. Entry flanked by DHS windows.



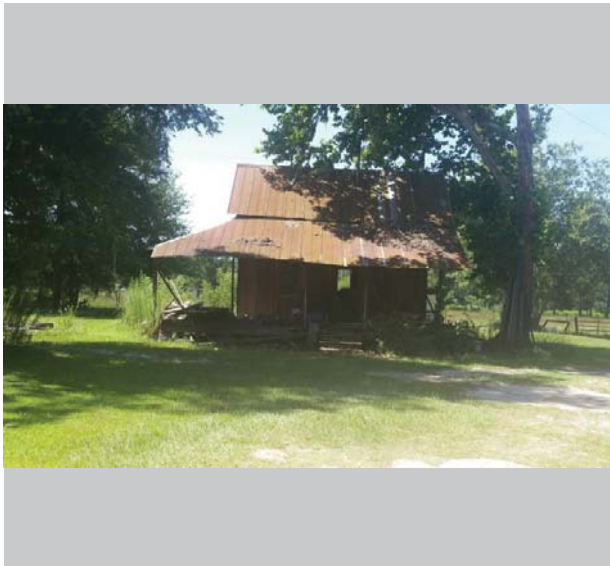
Brantley County Historic Resource

Field ID: BT-49
GNAHRGIS ID: 253082
County: Brantley
Preliminary NR Assessment: May Meet



SE corner of Dewey Road and Brantley Avenue

Coordinates: 31.13673, -82.13055



- Resource Type** Building
- Resource Use** Secondary structure: outbuilding
- Date of Construction** 1900
- Building Type** Single Pen
- Structural System** Balloon Frame
- Style** No Academic Style
- Roof** Gable:Side
- Exterior Cladding** Wood: Vertical Board
- Foundation** Pier: Concrete block
- Porch** Verandah
- Windows** Double Hung Sash: 2/2
- Chimney** N/A
- Additional Notes**



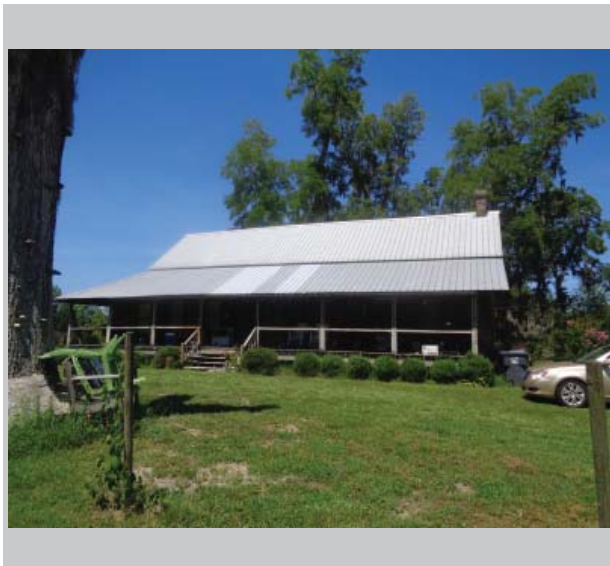
Brantley County Historic Resource

Field ID: BT-50
GNAHRGIS ID: 253103
County: Brantley
Preliminary NR Assessment: May Meet



Altman Circle, appr 250 yards to 47

Coordinates: 31.131175, -81.125300



Resource Type Building

Resource Use Residential: Single Family Dwelling

Date of Construction 1910

Building Type Unknown

Structural System Balloon Frame

Style No Academic Style

Roof Gable:Side

Exterior Cladding Wood: Weatherboard

Foundation Pier: Concrete

Porch Verandah

Windows Double Hung Sash: 2/2, Rectangular

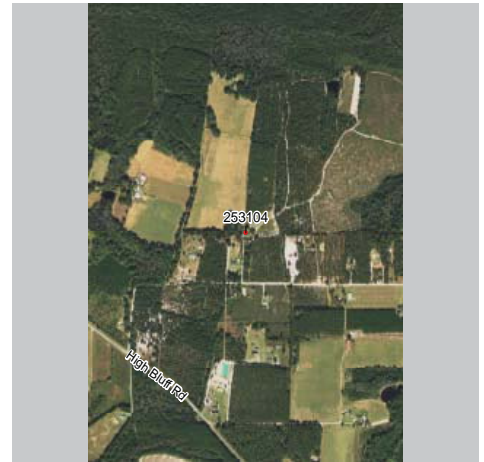
Chimney Gable End Exterior: Brick, X2

Additional Notes Not academic house type in GA. Side & rear addition. Sidelights. Corbeled chimneys.



Brantley County Historic Resource

Field ID: BT-51
GNAHRGIS ID: 253104
County: Brantley
Preliminary NR Assessment: May Meet



End of Doulas Ln, ~ 175 yards N of Griffin Douglas Ln

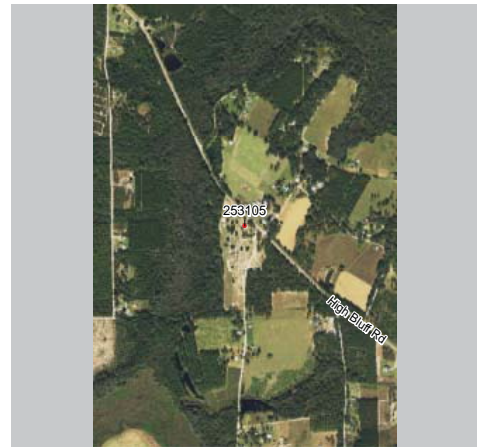
Coordinates: 31.15730, -82.172405



- Resource Type** Building
- Resource Use** Residential: Single Family Dwelling
- Date of Construction** 1910
- Building Type** Georgian Cottage
- Structural System** Balloon Frame
- Style** No Academic Style
- Roof** Gable: Multi
- Exterior Cladding** Synthetic: Asbestos
- Foundation** Unknown
- Porch** Verandah
- Windows** Double Hung Sash: 2/2, Rectangular
- Chimney** Off-center Ridgeline & Gable End Exterior: Brick
- Additional Notes** Obscured by veg. Rect vent in front and side gable. Decorative wood supports on porch.

THE UNIVERSITY OF GEORGIA
CE+D COLLEGE OF ENVIRONMENT + DESIGN
Brantley County
Historic Resource

Field ID: BT-52
GNAHRGIS ID: 253105
County: Brantley
Preliminary NR Assessment: May Meet



High Bluff Church and Cemetery
W Corner of Bluff Rd & High Bluff Rock Rd
Coordinates: 31.158847, -81.186655



Resource Type Site

Resource Use Funerary: Cemetery

Date of Construction 1861

Common Names Strickland, Crews, Albright, Griffin, Ammon

≈ Number of Burials 500

Oldest Burial 1861

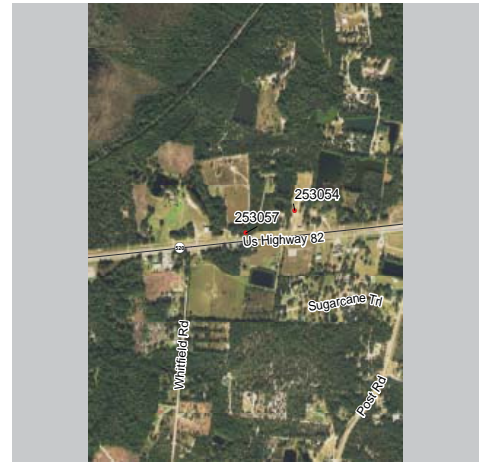
Burial Description CSA, WWII, WWI, Woodsmen of America

Cemetery Description Active Use. Natural forest surrounding. Outlined fences and family plots, historic wooden fencing. Mostly late 1800's and early 1900's. Church built circa 1940's. Front and back have 3 bays, central door flanked by single windows. Sides have 7 bays, d.d.



Brantley County Historic Resource

Field ID: BT-53
GNAHRGIS ID: 253057
County: Brantley
Preliminary NR Assessment: May Meet



442 Willis Road

Coordinates: 31.23139, -81.76842



Resource Type Building

Resource Use Residential: Single Family Dwelling

Date of Construction 1920

Building Type Bungalow: Front Gable

Structural System Balloon Frame

Style No Academic Style

Roof Gable: Front

Exterior Cladding Synthetic: Masonite

Foundation Unknown

Porch Verandah

Windows Double Hung Sash: 2/2, Rectangular.

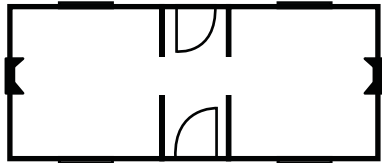
Chimney Lateral Exterior: Brick

Additional Notes 2 window bays deep originally. Back porch addition. Most windows original. Exposed rafters.

Bibliography

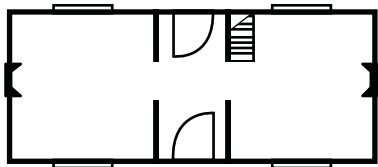
- <>. “Georgia Historic Resources Survey Manual,” Atlanta: Georgia Department of Natural Resources, Historic Preservation Division, 2000.
- <>. Georgia’s Living Places: Historic Houses in their Landscaped Setting (1991), http://georgiashpo.org/sites/uploads/hpd/pdf/NR15arch_20080521100904_optimized.pdf (accessed August 01, 2014).
- <>. “How to Apply the National Register Criteria for Evaluation: National Register Bulletin 15,” (Washington, D.C. : U.S. Government Printing Office, Department of the Interior, National Park Service, 1997.) <http://www.nps.gov/nr/publications/bulletins/pdfs/nrb15.pdf>
- Anderson Cordova, Karen and Burns, Leigh. Preservation Primer: A Resource Guide for Georgia. Atlanta: Georgia Department of Natural Resources, HPD, 2011.
- Ching, Frank. A Visual Dictionary of Architecture, New York : Van Nostrand Reinhold, 1995.
- Clouse, Richard. The Ranch House in Georgia: Guidelines for Evaluation Historic Preservation Division; available at [Http://issuu.com/georgiashpo/docs/ranch_house_guidelines?mode=window&background Color=%23222222](Http://issuu.com/georgiashpo/docs/ranch_house_guidelines?mode=window&background%20Color=%23222222) (Accessed August 12,2015).
- Derry, Anne, Jandal, H. Ward, Shull, Carol D., and Thorman, Jan. “Guidelines for Local Surveys: A Basis for Preservation Planning. National Register Bulletin 24,” Washington, D.C: U.S. Government Printing Office, Department of the Interior, National Park Service, 1985.) <http://www.nps.gov/nr/publications/bulletins/pdfs/nrb24.pdf>
- Lambin, Jeanne. “Preserving Resources from the Recent Past,” Washington, D.C.: National Trust for Historic Preservation, 2007
- McAlaster, Virginia and Lee. A Field Guide to American Houses, New York: Alfred A, Knopf, Inc, 2003.

Residential Building Types in Georgia



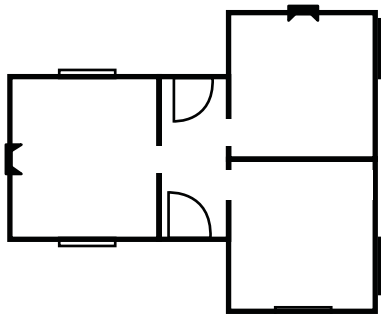
Central Hallway

Single story: One room deep by two wide with central hallway



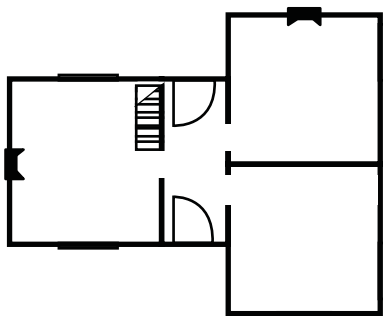
I-House

Multi-story: One room deep by two wide with central hallway



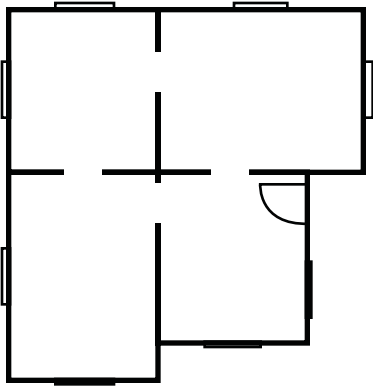
Gabled Wing Cottage

Single story: Asymmetrical massing with central hallway



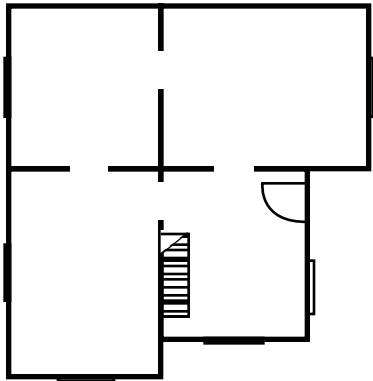
Gabled Wing House

Multi-story: Asymmetrical massing with central hallway



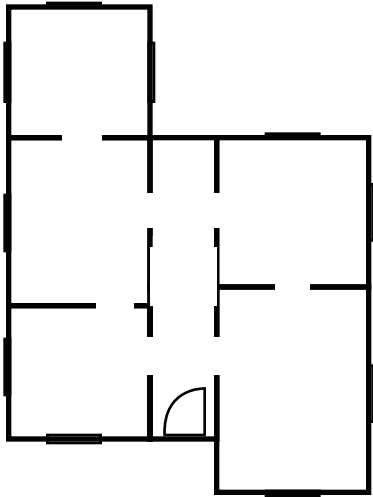
Queen Anne Cottage

Single story: Asymmetrical massing with no central hallway



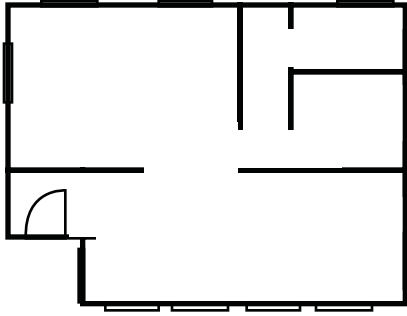
Queen Anne House

Multi-story: Asymmetrical massing with no central hallway



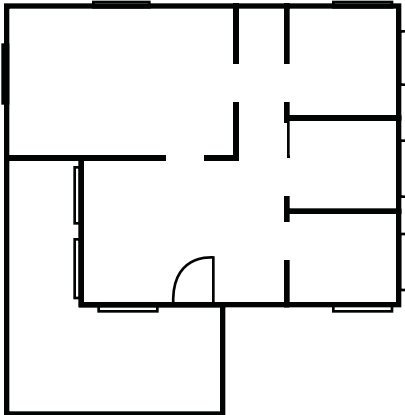
New South Cottage

Single story : Asymmetrical massing with central hallway



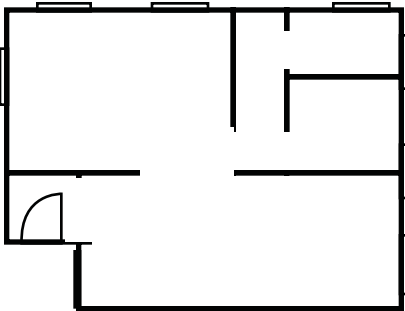
Bungalow (Front Gabled)

Single story: Irregular floor plans; one of four subtypes identified by a front gable roof shape



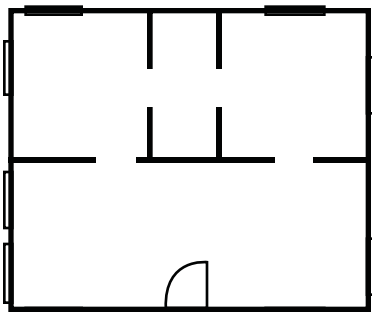
Bungalow (Cross Gabled)

Single story : Irregular floor plans; one of four subtypes identified by a cross gable roof shape



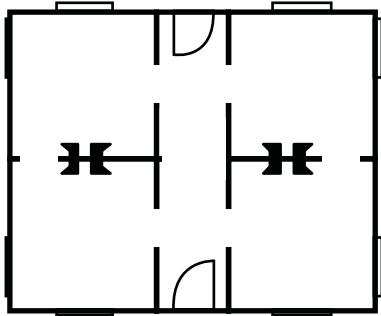
Bungalow (Hipped)

Single story: Irregular floor plans; one of four subtypes identified by a hipped roof shape



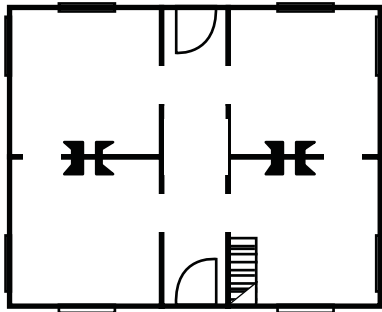
Bungalow (Side Gabled)

Single story: Irregular floor plans; one of four subtypes identified by a side gable roof shape



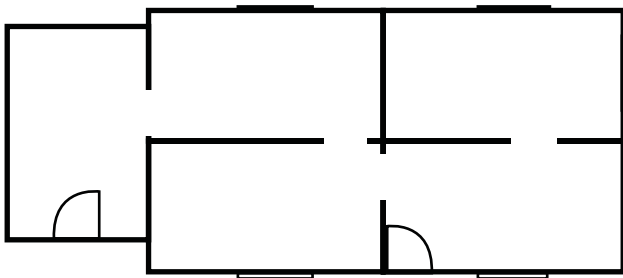
Georgian Cottage

Single story: Two rooms deep by two rooms wide with central hallway



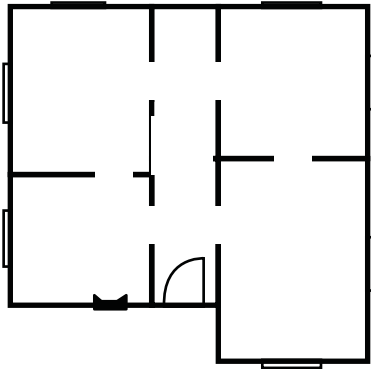
Georgian House

Multi-story: Two rooms deep by two rooms wide with central hallway



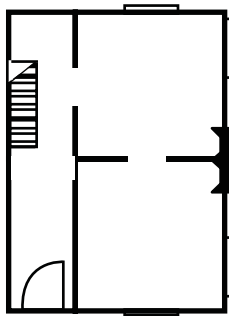
Side-Gabled Cottage

Single story: Tightly massed rooms with side projecting gables



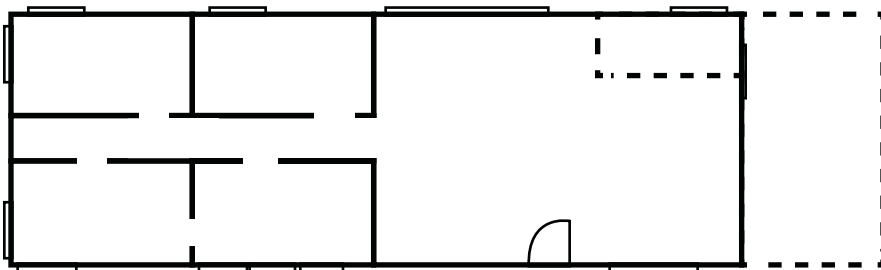
English Cottage

Single story: Irregular room placement with pronounced gable entry and chimney



Side Hallway

Multi-story: Two rooms deep by one wide with side hallway



Ranch House

Single story: Multiple rooms wide by two rooms deep; few hallways with interior zoning

Architectural Styles in Georgia: An Overview

The architecture of a house, its overall form and ornamentation, is classified as a style. Style is the decoration or ornamentation that has been put on a house in a systematic pattern or arrangement. Style has long been an important tool for describing, analyzing, and evaluating historic buildings; a style often reflects the needs and tastes of a particular time and a place in which it appears. Styles used during a particular time and in a particular location may contribute to an understanding of the culture of that period.



Adapted from *Georgia's Living Places: Historic Houses in the Landscaped Settings*,
hpd/pdf/NR15arch_20080521100904_optimized.pdf.

(1991), <http://georgiashpo.org/sites/uploads/>

Folk Victorian 1870-1920

Folk Victorian houses were built across Georgia in very large numbers. They were simple house forms, or house types, with Victorian-era decorative detailing such as jigsaw woodworks including brackets, spindlework and gingerbread trim. This detailing generally was taken from the elaborate styles, such as Queen Anne or Italianate, that were popular during the mid to late 19th century. Features were borrowed and added onto such places as porches and roof gables. This provided some hint of stylistic detailing on what was otherwise an unadorned traditional house form. This style is actually more a way of decorating a house than a precise stylistic category; however, the Folk Victorian house is so widespread that it demands a name.



Colonial Revival 1890-1955

Most Colonial Revival houses are symmetrical. A central entranceway is elaborated with a pediment supported by pilasters or columns. The use of broken pediments, fanlights and sidelights is common. Classical cornices with dentils or modillions are usually present. These features tend to be larger than original colonial details. The roof may be hipped or side-gabled with dormers. Windows have double-hung sashes, usually with six-over-six or nine-over-nine panes and may be paired. Walls are of masonry, masonry-veneer or wood.



English Vernacular Revival 1900-1940

Characteristics of English Vernacular Revival houses are a steeply pitched gabled roof with dominant front-facing gable and decorative half-timbering in the gables. Almost all have masonry walls. Most are masonry-veneered, a recently developed technique for applying a thin layer of masonry to a wall. Some houses have patterned brickwork, while others may be completely stuccoed. Often a variety of materials are used, such as brick walls with stone trim, wood half-timbering, and stuccoed gables. Massive masonry chimneys with decorative tops are common. Windows are generally tall and narrow, grouped together, multi-paned, and casements rather than double-hung. Some openings, particularly the entrance, may be emphasized by a round arch. Houses of this style are generally asymmetrical.



Craftsman 1910-1930

The Craftsman house uses a wide variety of materials both for its structure and decorative detailing. It has a low-pitched roof that is usually gabled but may also be hipped, giving a generally horizontal effect. The widely overhanging eaves are open with exposed rafters. Large gables have decorative brackets or braces at the eaves and may be covered with half-timbering. Roof dormers are sometimes found. Walls are most often wood but may also be covered with shingles or a masonry veneer of stone or brick. Porches have short square columns set on heavy masonry piers extending to the ground. Windows may have a multi-paned sash over a large one-pane sash. Craftsman houses are most often asymmetrical with a generally open and functional plan.



Gothic Revival 1850-1890

Gothic Revival houses typically have steeply pitched gabled roofs with both front-and side-facing gables. Decoratively sawn bargeboards are commonly found along the eaves. Window and door openings often have either pointed arched tops or heavily molded or pointed hoods. Porches are usually supported by slender posts with sawn woodwork forming flattened arches or brackets. Some houses have vertical board-and-batten siding. This style emphasized picturesqueness, verticality, and varied use of materials.



Greek Revival 1825-1860

The Greek Revival style is characterized by details such as prominent columns, pilasters, and wide plain entablatures that encircle a house. Proportions are large and heavy. A symmetrical, rectangular block has a symmetrical front facade with a central entrance. An elaborate door surround contains a rectangular transom, sidelights and pilasters. A typical expression of the Greek Revival in Georgia is a low-pitched, hipped roof supported by columns to form a full-width porch. Porticoes with triangular pediments are also found. Vernacular interpretations with simplified details, such as square rather than round columns, are common. Double-hung windows generally have six-over-six panes.





Neoclassical Revival 1895-1940

The most common feature of the Neoclassical Revival style is a dominant full-height front portico with classical columns. The portico may be at the entry or may cover the full facade; it may have a triangular pediment or be part of the overall roof. A full-height entry portico is often coupled with a one-story full-facade porch. The facade is more or less symmetrical, and the central entrance, surrounded with pilasters and columns, is elaborated with fanlights, sidelights, and transoms. There is almost always a classical cornice with dentils or modillions. The roof is usually low-pitched and hipped and may have a balustrade. A porte-cochere and side porches supported by columns are common.



Italianate 1840-1885

Italianate houses are generally asymmetrical with an L-shaped or other irregularly shaped plan and gabled roof. Distinguishing features are the widely overhanging eaves with decorative brackets that emphasize the cornice. Typically tall narrow windows with large two-over-two or one-over-one panes are often paired, arched, and topped with elaborate hoods. Bay windows are also common. Italianate style residential architecture faded out during the 1880s; however, many Italianate style commercial blocks were constructed until the 1890s. The flat topped blocks with brackets and decorative window moldings were two or more stories tall and featured large storefront windows. Brackets beneath eaves are the most distinguishing characteristic of the Italianate commercial block.



Mediterranean Revival 1890-1910

A Mediterranean Revival house has smooth stuccoed or masonry walls and is usually asymmetrical. The roof is covered with clay tile, is low-pitched, and may be either hipped or gabled. Houses following the Spanish tradition will have little or no eave overhang, while those following the Italian influence will have widely overhanging eaves with exposed rafters. Recessed and arcaded loggias, or open porches, are common. Windows are generally arched and may be grouped together. Sometimes columns and pilasters are used to elaborate openings.



Queen Anne 1880-1915

A Queen Anne style house is asymmetrical with complex roof and wall shapes. It displays a variety of textures, materials, and detailing. The asymmetrical shape results from a floor plan that is open and flowing. The roof is often steeply pitched and hipped with both front-and side-facing, or cross, gables. Wall surfaces avoid a smooth appearance through the use of projecting bays and materials such as patterned shingles that provide texture. The porch is usually asymmetrical and often wraps around two sides of the house. It is supported with slender turned posts and often decorated with sawn brackets and spindlework friezes. Roof gables may also be decorated with sawn ornamentation or spindlework and covered with patterned shingles. There are often prominent and elaborate brick chimneys with patterned and corbeled brickwork. A round or multi-sided tower may be found at a corner.



Spanish Colonial Revival 1900-1940

A Spanish Colonial Revival house has a clay tile roof that is usually gabled with little eave overhang. Walls are of smooth stucco. Arched openings and arcaded loggias, or open porches, are common. Windows are generally casement and grouped together. The roof may be elaborated with curvilinear gables or parapets from the mission tradition. Exposed roof beams may protrude from the walls to emphasize construction methods.





The University of Georgia
College of Environment and Design
Center for Community Design & Preservation
Historic Resources Survey Report
Brantley County, Georgia
2016