

Historic Resources Survey Report

Bacon County, Georgia

June 2016



The University of Georgia
College of Environment and Design
Center for Community Design & Preservation
Historic Resources Survey Report
Bacon County, Georgia 2016

Credits

Report Submitted to:

Georgia Transmission Corporation
2100 East Exchange Place
Tucker, Georgia, 30084-5342

Report Prepared by:

Center for Community Design and Preservation at the University of Georgia
<http://www.ced.uga.edu/pso>
225 W Broad St
Athens, Georgia, 30062

Pratt Cassity – Principal Investigator

Laura Kviklys – Project Coordinator

James Locke, MHP Candidate- Field Survey, Report Creation

Sean Griffith, MHP Candidate- Field Survey, Report Creation

Eleonora Machado, CCDP Graphics Coordinator, Report design

Table of Contents

Page 4	List of Figures
Page 4	List of Tables
Page 5	Introduction
Page 7	Project Description
Page 8	Methodology
Page 9	Criteria for Evaluation
Page 11	Survey Results
Page 19	Integrity
Page 21	Conclusion
Page 23-113	Resource Templates
Page 114	Bibliography
Page 115	House Types in Georgia
Page 120	Architectural Styles in Georgia

List of Figures

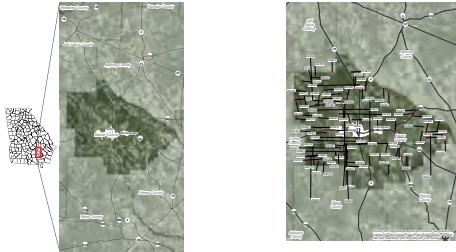


Figure 1. Project Survey Area of Bacon County

Figure 2. Identified Historic Resources in Bacon County

Resource Type	Count	Percentage
Building	60	65.9%
Site	30	33.0%
Structure	1	1.1%

File ID number	CNAIRBC25 ID	Latitude	Longitude	National register eligibility	Description
BC-1	25262	31.487762	-82.594027	Does not meet	Ranch house
BC-2	25267	31.48774229	-82.5939882	Does not meet	Ranch house
BC-3	25272	31.486849	-82.579272	Does not meet	Single place cottage
BC-4	25278	31.486839	-82.5791917	Does not meet	Single place cottage
BC-5	25272	31.4768779	-82.5639887	Does not meet	Grave Chapel
BC-6	25269	31.500379	-82.49147	May meet	Ranch house
BC-7	25269	31.4993685	-82.5226681	May meet	Ranch house
BC-8	25261	31.5006379	-82.5883847	May meet	Ranch house
BC-9	25264	31.5162818	-82.4822571	Does not meet	Ranch house
BC-10	25276	31.5148211	-82.4926252	May meet	Ranch house
BC-11	25278	31.512191	-82.4926252	May meet	Ranch house
BC-12	25217	31.5148158	-82.4923889	May meet	Ranch house
BC-13	25252	31.5148158	-82.4949748	May meet	Ranch house
BC-14	25258	31.5168962	-82.5884481	May meet	Ranch house

Current Use	Count	Percent
Burial - multiple (cemetery)	28	30.8%
Public Works	1	1.1%
Religious Facility	1	1.1%
Single dwelling (single living unit)	52	57.1%
Vacant/not in use	9	9.9%

Date of Construction	Count	Percent
1830-1839	1	1.1%
1850-1859	2	2.2%
1860-1869	2	2.2%
1870-1879	2	2.2%
1880-1889	3	3.3%
1890-1899	4	4.4%
1900-1909	14	15.4%
1910-1919	6	6.6%
1920-1929	12	13.2%
1930-1939	6	6.6%

List of Tables

Table 1. All Identified Resources

Table 2. Resource Type

Table 3. Current Use

Table 4. Date of Construction

Table 5. Residential Building Type

Table 6. Architectural Style

Introduction

What is a cultural resource survey?



The Georgia Historic Resources Survey is an ongoing, statewide survey of buildings, sites, structures, and objects of historical, architectural, and cultural significance. The Georgia Survey is one of the programs administered by the Historic Preservation Division of the Department of Natural Resources (HPD).

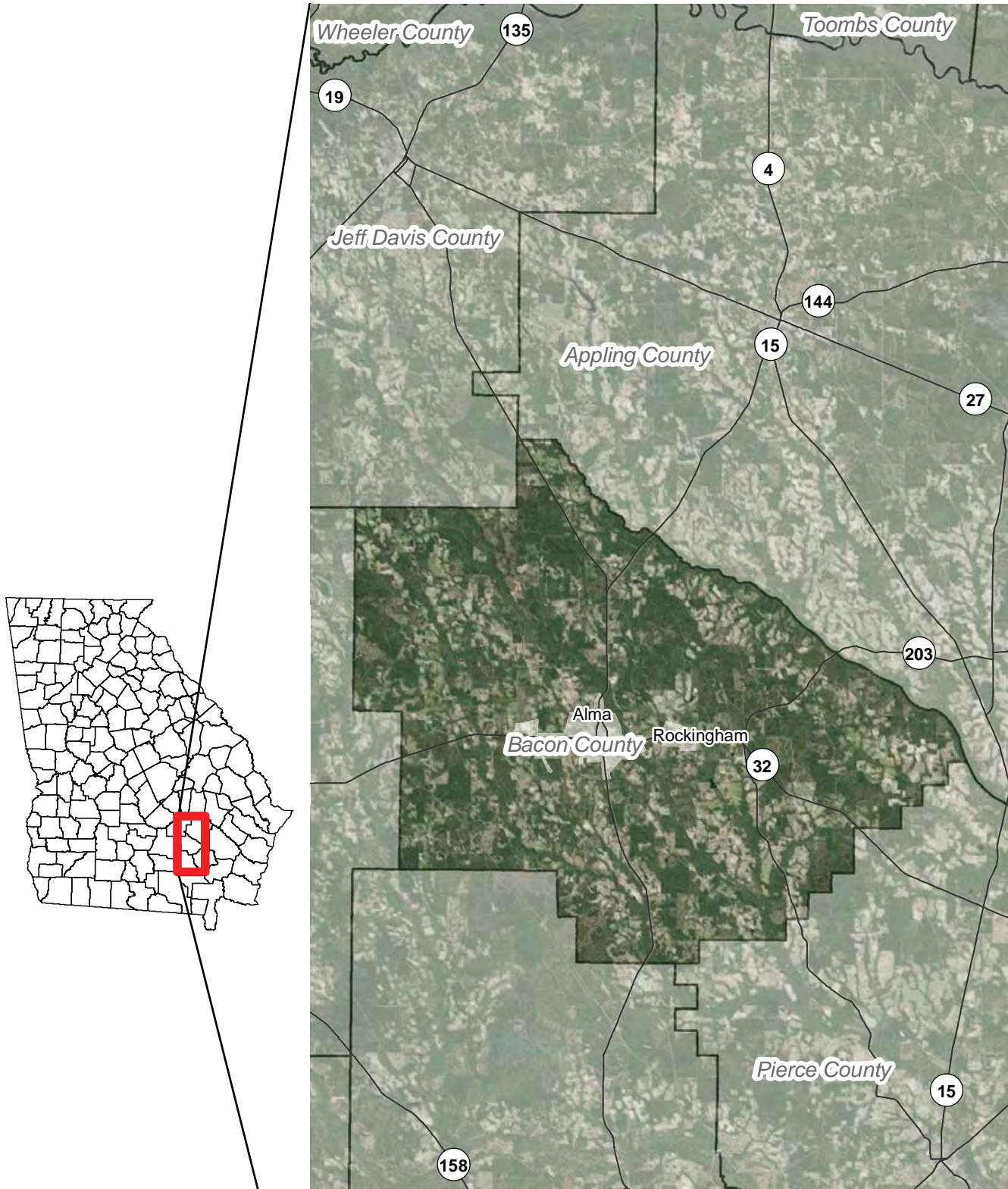
Completed surveys can be used to identify individual buildings and districts for possible listing in the Georgia Register of Historic Places; assist the preservation efforts of Georgia's Certified Local Governments; support local designations of buildings and districts; expedite environmental review by governmental agencies;

aid preservation and land-use planning; and promote research of the state's history and architecture. Through the public's participation, encouraged by the HPD, surveys can increase awareness of a community's historic resources.

A goal of historic resource survey is to collect a minimum level of information needed statewide for preservation activities. This basic, standard survey does not gather all the kinds of information needed in local preservation planning, environmental review, National Register nominations, or historical research, but serves as a foundation for these preservation activities.

¹<>. "Georgia Historic Resources Survey Manual," Atlanta: Georgia Department of Natural Resources, Historic Preservation Division, 2000.

Figure 1. Project Survey Area of Bacon County



Project Description

The Findit! Program housed at the Center for Community Design and Preservation (CCDP) within the University of Georgia's College of Environment and Design (CED) conducted a Phase I Historic Resource Survey of Bacon County, Georgia in July 2016. Findit! Is a state-wide cultural resource survey program sponsored by the Georgia Transmission Corporation (GTC) in partnership with the Georgia Department of Natural Resources, Historic Preservation Division (GA SHPO). The project area covered the 286 square mile county, identifying resources only in unincorporated portions. Bacon County is located in southeast Georgia and is bordered by Jeff Davis and Appling counties to the north, Pierce and Ware counties to the south and southeast, and Coffee county to the west.

The resource survey was performed by historic graduate students in the Historic Preservation program (MHP) at the CED. The survey consisted of historical and developmental research of the project area, identifying previous surveys and listed districts within the county, windshield and pedestrian field work, and data collection and analysis.

The information collected by the field survey was entered into Georgia's Natural, Archaeological, and Historic Resources Geographical Information System, (GNARHGIS), a web-based geographical information system designed to store and display information about Georgia's cultural resources. GNARHGIS is the repository for all of the current statewide historic resources survey data. The survey information was entered under survey ID 2337, "Findit Bacon County," and can be accessed at: <https://www.gnahrgis.org/gnahrgis/index.do>.

¹ Karen Anderson-Cordova and Leigh Burns. Preservation Primer: A Resource Guide for Georgia, Atlanta: Georgia Department of Natural Resources, Historic Preservation Division, 2011, 5.

Methodology

The survey was conducted according to the procedures outlined in The Georgia Historic Resources Survey Manual. The surveyors used a combination of USGS base maps and GIS data to identify potentially historic parcels and structures.

The survey was conducted according to the procedures outlined in The Georgia Historic Resources Survey Manual. The surveyors used a combination of USGS base maps and GIS data to identify potentially historic parcels and structures. The area was surveyed over the course of several days with systematic coverage of the project area.

Each assigned resource (within the assigned boundaries) was assessed for historic significance, and architectural integrity. A Georgia Historic Resources survey form was completed for buildings having a minimum level of architectural integrity. A structure with architectural integrity is one that generally retains its original location, design, setting, materials, workmanship, feeling and association. Properties with a significant loss of physical integrity, or those lacking historic significance were not surveyed. The physical condition of structures was not a consideration for identification for resources which retained architectural integrity.

All identified resources were approximately 50 years old or older, with the exception of Ranch Houses which were documented with a construction date prior to 1976. All properties surveyed were assigned an identification number then documented with the completion of a Georgia Historic Resource Survey Form, as well as photo documentation and corresponding georeferencing data. The survey form includes information about the use, style, floor plan, materials, context, physical description and an accurate determination of the date of construction and additions. Sources utilized for age determination and architectural style and type description included Lee and Virginia McAlester's *A Field Guide to American Houses*, the *Georgia Historic Resources Survey Manual*, *Georgia's Living Places* and *A Visual Guide to Architecture* by Francis D. K. Ching. All dates of construction are presented in nine year increments unless explicitly identified by markers or other documentation.

¹ Georgia's Living Places: Historic Houses in their Landscaped Settings (1991), http://georgiashpo.org/sites/uploads/hpd/pdf/NR15arch_20080521100904_optimized.pdf, (accessed August 01, 2012).

Criteria for Evaluation

National Register for Historic Places

Each resource was evaluated for potential listing in the National Register of Historic Places (NRHP), those resources already listed in the Register have been noted. The criteria for listing are outlined in the National Register Bulletin How to Apply the National Register Criteria for Evaluation published by the U.S Department of Interior, National Park Service. Cultural resources can be defined as eligible for the NRHP if they:

- A. Are associated with events that have had a significant contribution to a broad pattern of history; or
- B. Are associated with the lives of persons significant in the past;
- C. Embody distinctive characteristics of a type, period, or method of construction, or represent the work of a master, possess high artistic values, or represent a significant and distinguished entity whose components may lack distinction; or
- D. Have yielded or may be likely to yield, information important to history or prehistory.¹

Ordinarily cemeteries, birthplaces, or graves of historical figures, properties owned by religious institutions or used for religious purposes, structures that have been moved from their original locations, reconstructed historic buildings, properties primarily commemorative in nature, and properties that have achieved significance within the last 50 years are not considered for the National Register. However, properties will qualify if they are integral parts of districts that do meet the criteria or they fall within the following categories:

- a. A religious property deriving primary significance from architectural or artistic distinction or historical importance; or
- b. A building or structure removed from its original location but which is significant primarily for architectural value, or which is the surviving structure most importantly associated with a historic person or event; or
- c. A birthplace or grave of a historical figure of outstanding importance if there is no appropriate site or building directly associated with his or her productive life; or
- d. A cemetery which derives its primary significance from graves or persons of transcendent importance, from age, from distinctive design features, or from association with historic events; or
- e. A reconstructed building when accurately executed in a suitable environment and presented in a dignified manner as part of a restoration master plan, and when no other building or structure with the same association has survived; or
- f. A property achieving significance within the last 50 years if it is of exceptional importance.

For a property to qualify for the National Register it must meet one of the National Register Criteria for Evaluation by:

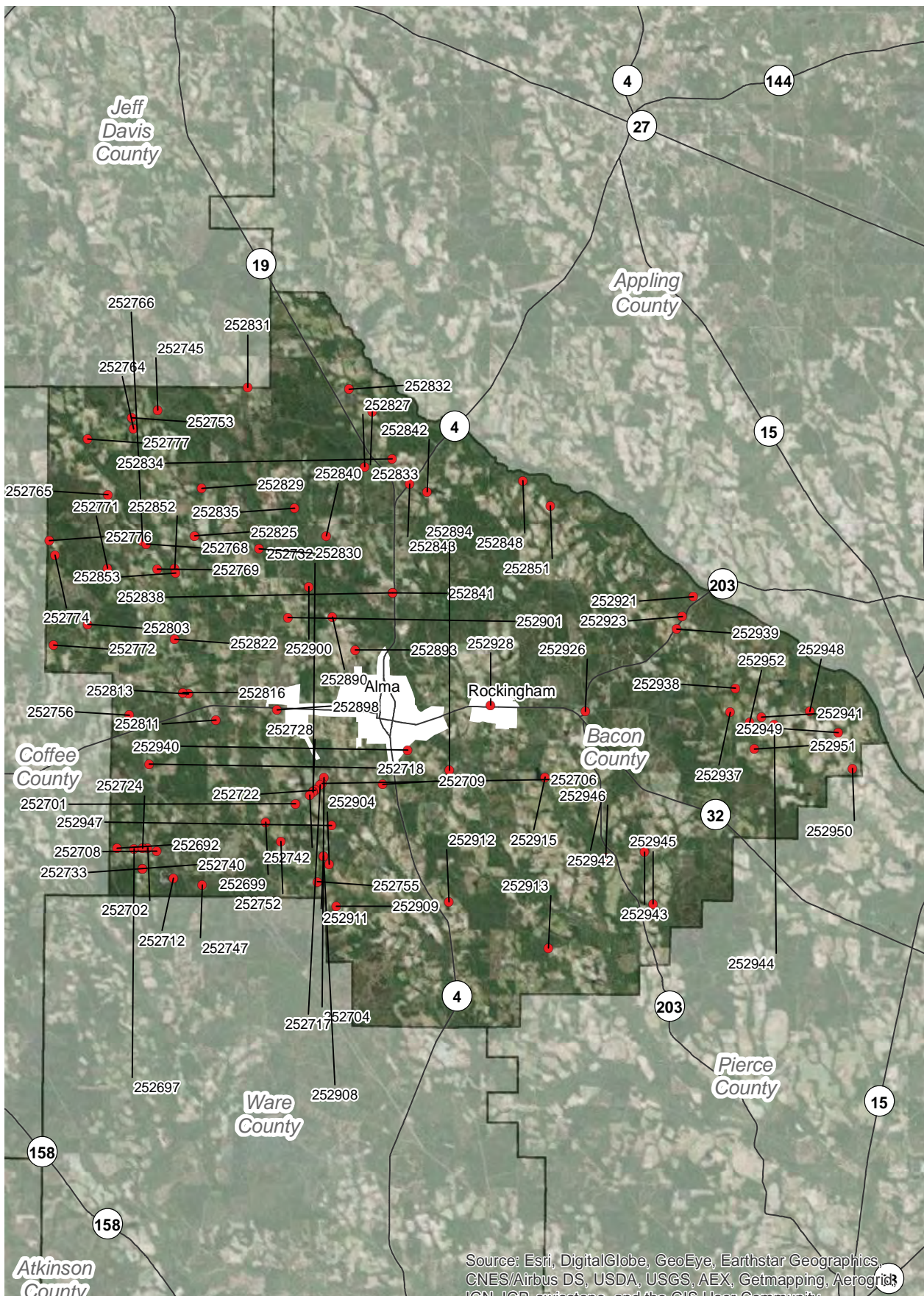
- Being associated with an important historical context and
- Retaining historic integrity of those features to convey its significance.

To determine whether a property or site retains integrity, it needs to be evaluated for the aspects of its location, design, setting, workmanship, materials, feeling, and association to convey its historic significance.²

¹The Criteria for Evaluation are found in the Code of Federal Regulations, Title 36, Part 60, reprinted in U.S. Department of Interior, National Park Service, National Register Bulletin: How to Apply the National Register Criteria for Evaluation, Washington, D.C., 1997, p. 2-3.

²A complete list of areas of significance can be accessed at http://www.nps.gov/nr/publications/bulletins/nrb15/nrb15_5.htm

Figure 2. Identified Historic Resources in Bacon County



Source: Esri, DigitalGlobe, GeoEye, Earthstar Geographics, CNES/Airbus DS, USDA, USGS, AEX, Getmapping, Aerogrid, IGN, ICB, swisstopo, and the GIS User Community

Survey Results

A total of 91 historic resources that meet and maintain a minimum level of age, architectural integrity, and historic significance were identified in unincorporated Bacon County. These resources are primarily buildings, with 60 resources remaining county wide. Of the built resources, the two most represented house types are the Ranch House (30 resources, 33% of total) and the front gable bungalow (11 resources, 12.1% of total). The remainder of identified resources had four or less representative samples, which included the side gabled bungalow (3), the central hallway cottage (4), the gable ell cottage (1), the Georgian cottage (3), the Georgian house (1), Plantation Plain (3), the Pyramid cottage (1), the saddlebag (1), and the Side gable cottage (1).

Overwhelmingly, the resources identified did not exhibit any architectural style (56 resources, 61.5%). A building with no architectural style may be historic, but does not have any characteristics or elements of high style, or classical architecture. Buildings in unincorporated areas usually do not embody high styles, and this figure is representative of vernacular architecture across the state. Those buildings that did exhibit some form of architectural styles included the Craftsman style (3 resources), and Colonial Revival (1 resource). As the majority of documented resources were Ranch Houses which typically do not incorporate high styles; this figure is potentially representative of future surveys in the region.

The identified resources range in date of construction from the 1830s to the 1980s. The three most represented decades were 1960-1969 (18, 19.8%), 1900-1909 (14, 15.4%), and 1920-1929 (12, 13.2%).

Table 1: All Identified Resources

Field ID-number	GNAHRGIS ID	Latitude	Longitude	National register eligibility	Description
BC-1	252692	31.487782	-82.594027	Does not meet	Ranch house
BC-2	252697	31.48771929	-82.58580802	Does not meet	Ranch house
BC-3	252702	31.4880498	-82.57925772	Does not meet	Side gable cottage
BC-4	252708	31.48666309	-82.57499317	Does not meet	Gable ell cottage
BC-5	252712	31.47601739	-82.56700857	Does not meet	Grace Chapel
BC-6	252890	31.58070398	-82.491437	May meet	Ranch house
BC-7	252699	31.49855005	-82.52296691	May meet	Ranch house
BC-8	252701	31.50585679	-82.50883667	May meet	Ranch house
BC-9	252704	31.51632018	-82.49527571	Does not meet	Ranch house
BC-10	252706	31.51410531	-82.49626522	May meet	Ranch house
BC-11	252709	31.5137593	-82.49672886	May meet	Ranch house
BC-12	252717	31.51341158	-82.49720009	May meet	Ranch house
BC-13	252722	31.51145103	-82.49947484	May meet	Ranch house
BC-14	252728	31.51069062	-82.50048691	May meet	Ranch house
BC-15	252732	31.51058174	-82.50058082	May meet	Ranch house
BC-16	252742	31.5094672	-82.50199717	May meet	Ranch house
BC-17	252718	31.52153831	-82.5788016	May meet	Bungalow: front gable
BC-18	252724	31.48794732	-82.58170638	May meet	Ranch house
BC-19	252733	31.47978343	-82.58173849	May meet	Bungalow: front gable
BC-20	252740	31.47824435	-82.58190279	May meet	Bungalow: side gable
BC-21	252747	31.47321397	-82.55324104	Does not meet	Ranch house
BC-22	252752	31.49086314	-82.51589172	May meet	Bungalow: front gable
BC-23	252755	31.47474742	-82.49841531	Does not meet	Sweat Cemetery
BC-24	252756	31.54102626	-82.58821615	Does not meet	Georgian Cottage
BC-25	252772	31.56902145	-82.62457204	May meet	Ranch house
BC-26	252774	31.60502059	-82.62387192	May meet	Bungalow: front gable
BC-27	252776	31.61087173	-82.62690533	May meet	Central Hallway
BC-28	252777	31.65184943	-82.60864099	May meet	Mims Church and Cemetery
BC-29	252745	31.66318348	-82.575441	May meet	Georgian Cottage
BC-30	252753	31.65994307	-82.58798226	May meet	Ranch house

Table 1 Continued: All Identified Resources

BC-31	252764	31.65562306	-82.58672604	May meet	Central Hallway
BC-32	252765	31.62929309	-82.598947	Does not meet	Ranch house
BC-33	252766	31.61081	-82.58225	May meet	Bungalow: front gable
BC-34	252768	31.60970711	-82.580504	May meet	Campground Methodist Church and Cemetery
BC-35	252769	31.59951734	-82.57524324	May meet	Ranch house
BC-36	252803	31.577502	-82.60844	Appears to meet	Plantation Plain
BC-37	252771	31.55984469	-82.5988586	Appears to meet	Plantation Plain
BC-38	252811	31.53930364	-82.54690201	Does not meet	Douglas Chapel Baptist Church and Cemetery
BC-39	252813	31.54970057	-82.5600977	May meet	Ranch house
BC-40	252816	31.55025759	-82.56272143	May meet	Pyramid Cottage
BC-41	252822	31.57154596	-82.56675018	Does not meet	Wesley Chapel Church and Cemetery
BC-42	252825	31.61302228	-82.55731589	Does not meet	Ranch house
BC-43	252829	31.63203378	-82.55408749	Appears to meet	Bungalow: front gable
BC-44	252830	31.60778269	-82.52654767	May meet	Stewart Cemetery
BC-45	252831	31.67258	-82.53221	May meet	Holton Cemetery
BC-46	252832	31.67186346	-82.4838902	Does not meet	Unity Baptist Church and Cemetery
BC-47	252833	31.66275563	-82.47278563	Does not meet	Ranch house
BC-48	252834	31.64393339	-82.46324569	Does not meet	New Hope Church and Cemetery
BC-49	252827	31.64082342	-82.47636139	May meet	Saddlebag
BC-50	252835	31.62419926	-82.50964947	Appears to meet	Central Hallway
BC-51	252838	31.62145556	-82.50176703	Does not meet	Pike Cemetery
BC-52	252840	31.6131059	-82.49445586	May meet	Ranch house
BC-53	252841	31.59033	-82.46278	Does not meet	Pine Lawn Cemetery

Table 1 Continued: All Identified Resources

BC-54	252842	31.63082935	-82.44648376	May meet	Springfield Church and Cemetery
BC-55	252843	31.6339763	-82.45469297	May meet	Harrison Cemetery
BC-56	252848	31.63548217	-82.40079006	Does not meet	Big Creek Cemetery
BC-57	252851	31.62535888	-82.38759546	May meet	Bungalow: front gable
BC-58	252893	31.56763719	-82.48055682	May meet	Taylor Cemetery
BC-59	252852	31.59998311	-82.5667414	Appears to meet	Bungalow: front gable
BC-60	252853	31.59816375	-82.5664202	Does not meet	Mercer Cemetery
BC-61	252898	31.543456	-82.517895	Appears to meet	Ranch house
BC-62	252900	31.59242333	-82.5022372	May meet	Patterson Cemetery
BC-63	252901	31.58044207	-82.51263201	May meet	Ranch house
BC-64	252894	31.51938965	-82.43538225	May meet	Holton Cemetery
BC-65	252904	31.48186792	-82.49275359	May meet	Georgian Cottage
BC-66	252908	31.48501507	-82.49555137	May meet	Pine Grove Cemetery
BC-67	252909	31.46496857	-82.48920032	May meet	Bungalow: front gable
BC-68	252911	31.44690002	-82.4478472	Does not meet	Lees Chapel Cemetery
BC-69	252912	31.46674141	-82.43562729	May meet	Elizabeth Chapel Cemetery
BC-70	252913	31.44842205	-82.38800353	May meet	Corinth Church Cemetery
BC-71	252915	31.5167693	-82.38982633	May meet	Ranch house
BC-72	252921	31.58905338	-82.31924125	Does not meet	Oak Hill Baptist Church and Cemetery
BC-73	252923	31.58109383	-82.3243484	May meet	Wesley Chapel Cemetery
BC-74	252926	31.54316315	-82.37076986	May meet	Ranch house
BC-75	252928	31.54554888	-82.41579388	May meet	Forest Fire Lookout Tower

Table 1 Continued: All Identified Resources

BC-76	252941	31.54092286	-82.28665207	Does not meet	Damascus Cemetery
BC-77	252944	31.53809658	-82.28050994	May meet	Bungalow: front gable
BC-78	252948	31.54322547	-82.26355741	Does not meet	Active use cemetery
BC-79	252949	31.53481779	-82.24989504	Does not meet	The Jesus Church Cemetery
BC-80	252950	31.52053176	-82.24325536	May meet	Bungalow: side gable
BC-81	252951	31.52818207	-82.29006388	Does not meet	Antioch Cemetery
BC-82	252952	31.53888205	-82.29217061	May meet	Plantation Plain
BC-83	252937	31.542825	-82.301478	Appears to meet	Georgian House
BC-84	252938	31.55261801	-82.29905971	May meet	Bungalow: front gable
BC-85	252939	31.57614548	-82.32713105	May meet	Ranch house
BC-86	252940	31.52753085	-82.45541659	May meet	Ranch house
BC-87	252942	31.5086514	-82.36270843	May meet	Ranch house
BC-88	252943	31.4869598	-82.34240292	May meet	Friendship Church Cemetery
BC-89	252945	31.46629137	-82.33816225	May meet	Bungalow: side gable
BC-90	252946	31.48469883	-82.36081822	Does not meet	Ten Mile Creek Cemetery
BC-91	252947	31.497219	-82.491718	May meet	Central Hallway

Table 2. Resource Type

Resource Type	Count	Percentage
Building	60	65.9%
Site	30	33.0%
Structure	1	1.1%

Table 3. Current Resource Use

Current Use	Count	Percent
Burial - multiple (cemetery)	28	30.8%
Public Works	1	1.1%
Religious Facility	1	1.1%
Single dwelling (single living unit)	52	57.1%
Vacant/not in use	9	9.9%

Table 4. Date of Construction

Date of Construction	Count	Percent
1830-1839	1	1.1%
1850-1859	2	2.2%
1860-1869	2	2.2%
1870-1879	2	2.2%
1880-1889	3	3.3%
1890-1899	4	4.4%
1900-1909	14	15.4%
1910-1919	6	6.6%
1920-1929	12	13.2%
1930-1939	6	6.6%
1940-1949	2	2.2%
1950-1959	6	6.6%
1960-1969	18	19.8%
1970-1976	10	11.0%
post-1976	3	3.3%

Table 5. Identified Building Types

Residential Building type	Count	Percent
Bungalow: front gable	11	12.1%
Bungalow: side gable	3	3.3%
Central Hallway	4	4.4%
Gable ell cottage	1	1.1%
Georgian Cottage	3	3.3%
Georgian House	1	1.1%
Plantation Plain	3	3.3%
Pyramid Cottage	1	1.1%
Ranch house	30	33.0%
Saddlebag	1	1.1%
Side gable cottage	1	1.1%

Table 6. Identified Architectural Styles

Style	Count	Percent
Colonial Revival	1	1.1%
Craftsman	3	3.3%
No Academic Style	56	61.5%





Integrity



The integrity of documented resources in unincorporated Bacon County was mainly fair to good. The integrity of those not documented, was often affected by non-historic alterations, which compromise the resource's design, materials, and/or historic workmanship. These changes include additions to the building and material replacement including but not limited to: exterior cladding, porch alterations, window or door replacement, etc. The majority of the resources built within the last 60 years, including Ranch Houses, maintain a significant portion of original materials and architectural detailing.

9 or the 91 (9.9%) identified resources are currently vacant. Many resources documented as 'vacant' maintain excellent integrity; these resources have few, if any alterations to their historic fabric. Vacant properties are considered highly endangered because they are more susceptible to fire and vandalism. Additionally, repairs and weatherproofing are not carried out in a timely manner, thus leaving the structures to decay. The condition of many of these resources is poor, but with minimal intervention, many of them can be restored.

Of the resources with minimal alterations, 7 appear to meet the criteria for eligibility for the National Register of Historic Places.

57 resource 'may meet' the National Register criteria; these resources have good to excellent architectural integrity, but warrant further research as to their accurate age and historic significance.

27 documented resources do not appear to meet the National Register standards. These resources may maintain historic significance, but do not meet the age criteria (as is the case with many cemeteries), or have undergone extensive alterations which hinder the resource's architectural integrity. These alterations often affect the design, materials, or workmanship of the particular resource, which invariably destroy the historic feeling and significance.



Conclusion



Bacon County has an array of extant house types for a heavily agrarian area. This survey was the first ever county wide endeavor, and yielded insight into the architecture of the lower coastal plain in Georgia. With a population hovering around 10,000 residents for over 30 years, Bacon County was never heavily populated, and evidence of timber and blueberry farms are still present.

The primary extant house type county wide is the Ranch house. These buildings are located along both major and secondary roads, as well as on more traditional homestead footings. Both the number and condition of identified Ranch houses can aid researchers in developing and refining a context for this house type in a rural setting.

The disparate location of historic resources does not lend to a contagious district in unincorporated Bacon County. However, a multiple property listing or a cultural landscape inventory within an agricultural context may provide protection for these resources at the county level.





Bacon County Historic Resource

Field ID: BC-1
GNAHRGIS ID: 252692
County: Bacon
Preliminary NR Assessment: Does Not Meet



568-576 White Pine Highway

Coordinates: 31.48778, -82.59402

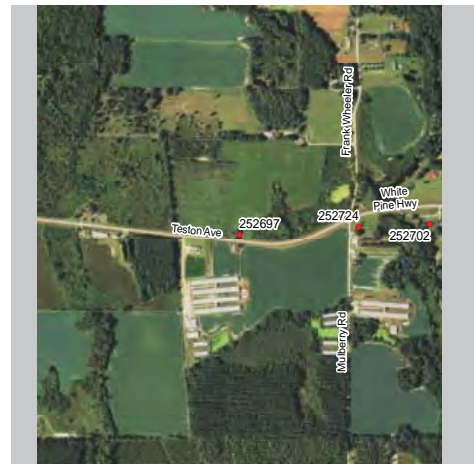


- Resource Type** Building
- Resource Use** Residential: Single Family Dwelling
- Date of Construction** c.1960
- Building Type** Ranch
- Structural System** Balloon Frame
- Style** No Academic Style
- Roof** Hip
- Exterior Cladding** Wood: Weatherboard
Masonite Siding
- Foundation** Unknown
- Porch** Portico
- Windows** Double Hung Sash: 2/2
- Chimney** No chimney observed
- Additional Notes** -linear ranch
-4 window bays across
-scrolled metal porch support



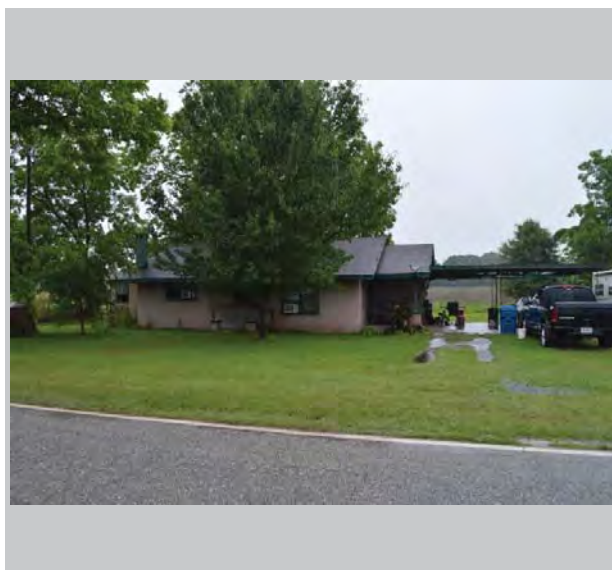
Bacon County Historic Resource

Field ID: BC-02
GNAHRGIS ID: 252697
County: Bacon
Preliminary NR Assessment: Does Not Meet



425 White Pine Highway

Coordinates: 31.48771, -82.58580



- Resource Type** Building
- Resource Use** Residential: Single Family Dwelling
- Date of Construction** c.1960
- Building Type** Ranch
- Structural System** Balloon Frame
- Style** No Academic Style
- Roof** Gable: Side
- Exterior Cladding** Concrete: Concrete Block
- Foundation** Unknown
- Porch** Verandah, Stoop
- Windows** Double Hung Sash: 6/6 rectangular
- Chimney** Off-ctr in roof surface
Material: brick
- Additional Notes** -original brick porch piers
-double metal carport added
-sloped plywood addition



Bacon County Historic Resource

Field ID: BC-03
GNAHRGIS ID: 252702
County: Bacon
Preliminary NR Assessment: Does Not Meet



358 White Pine Highway

Coordinates: 31.48804, -82.57925

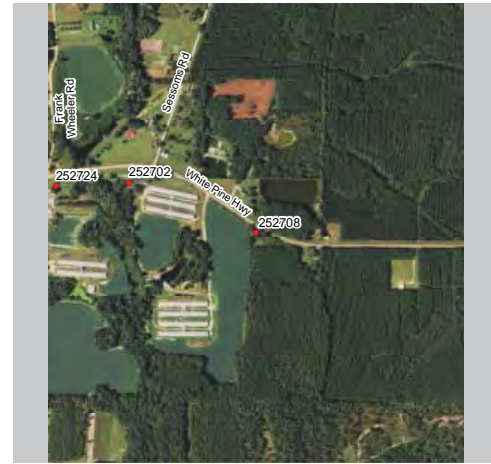


- Resource Type** Building
- Resource Use** Residential: Single Family Dwelling
- Date of Construction** c.1950
- Building Type** Side Gable Cottage
- Structural System** Balloon Frame
- Style** No Academic Style
- Roof** Gable: Side
- Exterior Cladding** Brick: Common
- Foundation** Unknown
- Porch** Stoop
- Windows** Double Hung Sash: 6/6 rectangular
- Chimney** No chimney observed
- Additional Notes** -original American small house; multiple additions
-2 houses connected with walk; separate ranch



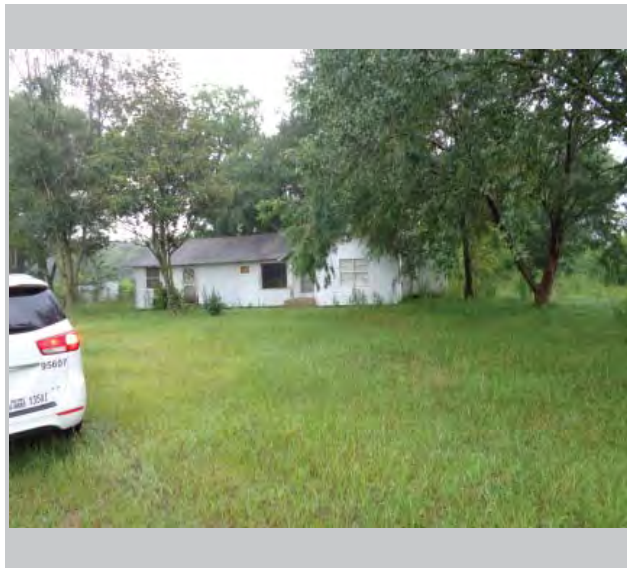
Bacon County Historic Resource

Field ID: BC-04
GNAHRGIS ID: 252708
County: Bacon
Preliminary NR Assessment: Does Not Meet



White Pine Highway
east of Sessoms Rd and White Pine Rd intersection

Coordinates: 31.48666, -82.57499



Resource Type Building

Resource Use Residential: Single Family Dwelling

Date of Construction c.1960

Building Type Gabled Ell Cottage

Structural System Balloon Frame

Style No Academic Style

Roof Gable: Front, Side

Exterior Cladding Prism Synthetics: Vinyl Siding

Foundation Unknown

Porch Recessed

Windows Double Hung Sash: 6/6, 1/1 rectangular

Chimney Off-ctr in roof surface
Material: brick

Additional Notes -multiple additions/alterations
-overhanging, exposed rafter tails



Bacon County Historic Resource

Field ID: BC-05
GNAHRGIS ID: 252712
County: Bacon
Preliminary NR Assessment: Does Not Meet



Grace Chapel
Highway 64 at Grace Chapel Road

Coordinates: 31.47602, -82.56701



- Resource Type** Building
- Resource Use** Religious: Church
- Date of Construction** c.1960
- Building Type** Front Gable Church
- Structural System** Balloon Frame
- Style** No Academic Style
- Roof** Gable: Cross
- Exterior Cladding** Concrete: Concrete Block
- Foundation** Concrete: Poured
- Porch** Recessed
- Windows** Double Hung Sash: 6/6 rectangular
- Chimney** No chimney observed
- Additional Notes**
 - 3 level spire
 - rounded arch entry
 - double entry door
 - two rear additions



Bacon County Historic Resource

Field ID: BC-6
GNAHRGIS ID: 252890
County: Bacon
Preliminary NR Assessment: May Meet



139 Pondhouse Road

Coordinates: 31.58070, -82.49143



Resource Type Building

Resource Use Residential: Single Family Dwelling

Date of Construction c. 1960

Building Type Linear Ranch

Structural System Balloon Frame

Style No Academic Style

Roof Hip

Exterior Cladding Brick

Foundation Brick:Continuous

Porch Recessed

Windows Double-hung sash, 2/2, rectangular

Chimney No chimney observed

Additional Notes -recessed porch with one thin column
-detached integrated toolshed in carport



Bacon County Historic Resource

Field ID: BC-07
GNAHRGIS ID: 252699
County: Bacon
Preliminary NR Assessment: May Meet



East of Pinehollow Lane
and Highway 64 intersection

Coordinates: 31.49855, -82.52296



- Resource Type** Building
- Resource Use** Residential: Single Family Dwelling
- Date of Construction** c.1970
- Building Type** Ranch
- Structural System** Balloon Frame
- Style** No Academic Style
- Roof** Gable: Side, Front
- Exterior Cladding** Brick: Common
- Foundation** Unknown
- Porch** Portico
- Windows** Double Hung Sash: 2/2 rectangular
- Chimney** No chimney observed
- Additional Notes**
 - 3 light mid-century door
 - paired double hung sash windows
 - large Chicago window



Bacon County Historic Resource

Field ID: BC-08
GNAHRGIS ID: 252701
County: Bacon
Preliminary NR Assessment: May Meet



Southwest of MBL Lane
and Highway 64 Intersection

Coordinates: 31.50585, -82.50883



Resource Type Building

Resource Use Residential: Single Family Dwelling

Date of Construction c.1970

Building Type Ranch

Structural System Balloon Frame

Style No academic style

Roof Gable: Side, Front

Exterior Cladding Brick: Common

Foundation Unknown

Porch Portico

Windows Double Hung Sash: 2/2 rectangular

Chimney No chimney observed

Additional Notes -3 light mid-century door
-paired double hung sash windows
- large Chicago window



Bacon County Historic Resource

Field ID: BC-09
GNAHRGIS ID: 252704
County: Bacon
Preliminary NR Assessment: Does Not Meet



47 State Route 64

Coordinates: 31.51632, -82.49527



- Resource Type** Building
- Resource Use** Residential: Single Family Dwelling
- Date of Construction** c.1970
- Building Type** Ranch
- Structural System** Balloon Frame
- Style** No Academic Style
- Roof** Gable: Side, Front
- Exterior Cladding** Brick: Common, Prism
Synthetics: Vinyl Siding
- Foundation** Unknown
- Porch** Stoop
- Windows** Top Transom Windows
- Chimney** No chimney observed
- Additional Notes** -large overhanging eaves
-double entry door
-exposed mid-century rafters



Bacon County Historic Resource

Field ID: BC-10
GNAHRGIS ID: 252706
County: Bacon
Preliminary NR Assessment: May Meet



447 State Route 64

Coordinates: 31.51410, -82.49626



Resource Type Building

Resource Use Residential: Single Family Dwelling

Date of Construction c.1975

Building Type Ranch

Structural System Balloon Frame

Style No Academic Style

Roof Hip

Exterior Cladding Brick: Common

Foundation Unknown

Porch Recessed

Windows Double Hung Sash: 6/6 rectangular

Chimney Lateral exterior
Material: Brick

Additional Notes -linear with cluster
-polychromatic brick
-lattice brick screen wall
-picture window



Bacon County Historic Resource

Field ID: BC-11
GNAHRGIS ID: 252709
County: Bacon
Preliminary NR Assessment: May Meet



447 State Route 64

Coordinates: 31.51375, -82.4672



- Resource Type** Building
- Resource Use** Residential: Single Family Dwelling
- Date of Construction** c.1970
- Building Type** Ranch
- Structural System** Balloon Frame
- Style** No Academic Style
- Roof** Gable: Side
- Exterior Cladding** Brick: Common
- Foundation** Unknown
- Porch** Recessed
- Windows** Double Hung Sash: 6/6 rectangular
- Chimney** Off-ctr in roof surface
Material: Brick
- Additional Notes**
 - polychromatic brick
 - large Chicago window
 - vinyl in side gables
 - brick steps to porch



Bacon County Historic Resource

Field ID: BC-12
GNAHRGIS ID: 252717
County: Bacon
Preliminary NR Assessment: May Meet



Southwest of Pinegrove Road
and Highway 64 Intersection

Coordinates: 31.51341, -82.49720



Resource Type Building

Resource Use Residential: Single Family Dwelling

Date of Construction c.1970

Building Type Ranch

Structural System Balloon Frame

Style No Academic Style

Roof Gable: Cross

Exterior Cladding Brick: Common

Foundation Unknown

Porch Portico

Windows Double Hung Sash: 9/9 rectangular

Chimney No chimney observed

Additional Notes -elongated linear ranch
-classical portico
-obscured by vegetation
-circular vent in portico



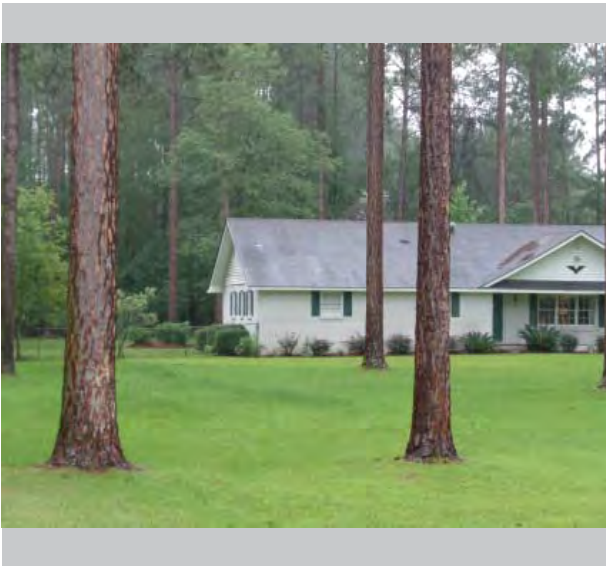
Bacon County Historic Resource

Field ID: BC-13
GNAHRGIS ID: 252722
County: Bacon
Preliminary NR Assessment: May Meet



On Highway 64 Southeast
of Jonas Lake

Coordinates: 31.51145, -82.49947



- Resource Type** Building
- Resource Use** Residential: Single Family Dwelling
- Date of Construction** c.1980
- Building Type** Ranch
- Structural System** Balloon Frame
- Style** No Academic Style
- Roof** Gable: Side
- Exterior Cladding** Brick: Common
- Foundation** Unknown
- Porch** Recessed
- Windows** Double Hung Sash: 6/6 rectangular
- Chimney** No chimney observed
- Additional Notes** -white painted brick
-integrated carport
-tripartite 6/6 window
-octangular vent in gable



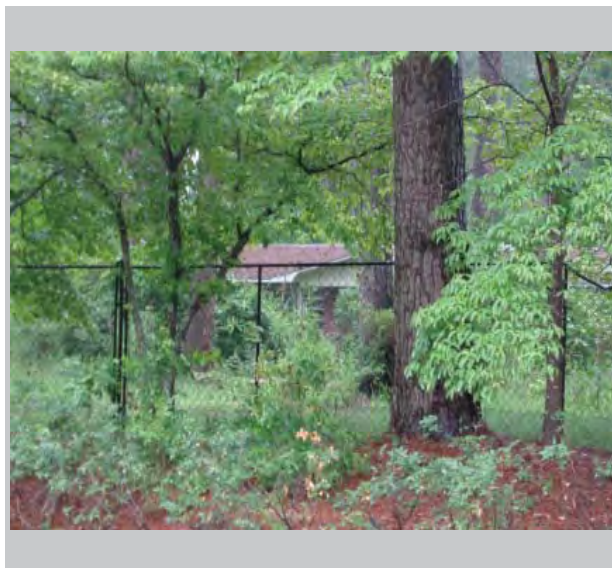
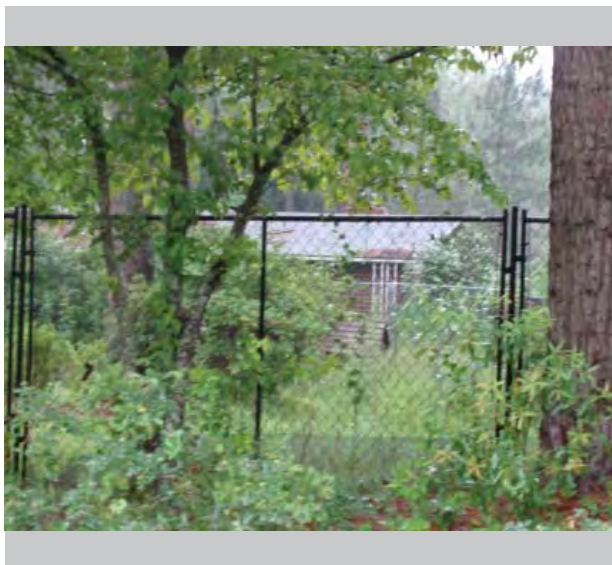
Bacon County Historic Resource

Field ID: BC-14
GNAHRGIS ID: 252728
County: Bacon
Preliminary NR Assessment: May Meet



Northeast of MBL Lane
and Highway 64 Intersection

Coordinates: 31.51069, -82.50048



Resource Type Building

Resource Use Residential: Single Family Dwelling

Date of Construction c.1960

Building Type Ranch

Structural System Unknown

Style Unknown

Roof Unknown

Exterior Cladding Brick

Foundation Unknown

Porch Unknown

Windows Unknown

Chimney No chimney observed

Additional Notes -heavily obscured by vegetation
-chain link fence surrounds



Bacon County Historic Resource

Field ID: BC-15
GNAHRGIS ID: 252732
County: Bacon
Preliminary NR Assessment: May Meet



Northeast of MBL Lane
and Highway 64 Intersection

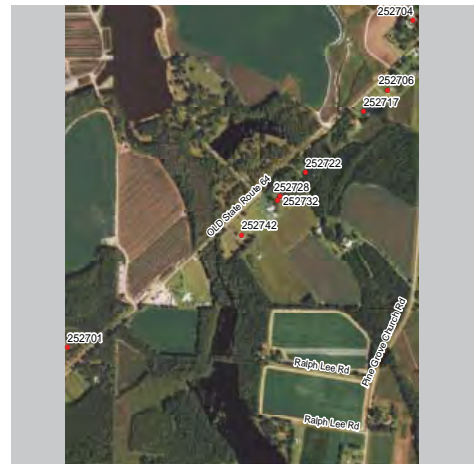
Coordinates: 31.51058, -82.50058



- Resource Type** Building
- Resource Use** Residential: Single Family Dwelling
- Date of Construction** c.1980
- Building Type** Ranch
- Structural System** Balloon Frame
- Style** No Academic Style
- Roof** Gable: Side
- Exterior Cladding** Brick: Veneer, Prism
Synthetics: Vinyl Siding
- Foundation** Unknown
- Porch** Verandah
- Windows** Double Hung Sash: 6/6 rectangular
- Chimney** No chimney observed
- Additional Notes** -linear with center cluster
-4 turned porch supports
-polychromatic brick
-paired windows


Bacon County
Historic Resource

Field ID: BC-16
GNAHRGIS ID: 252742
County: Bacon
Preliminary NR Assessment: May Meet



518-698 State Route 64

Coordinates: 31.50946, -82.50199



- Resource Type** Building
- Resource Use** Residential: Single Family Dwelling
- Date of Construction** c.1970
- Building Type** Ranch
- Structural System** Balloon Frame
- Style** No Academic Style
- Roof** Gable: Side, Front
- Exterior Cladding** Brick, Prism Synthetics: Vinyl, Aluminum Siding
- Foundation** Unknown
- Porch** Stoop
- Windows** Double Hung Sash: 6/6 rectangular
- Chimney** No chimney observed
- Additional Notes** -linear ranch with carport
-replacements include roof, vinyl, aluminum siding



Bacon County Historic Resource

Field ID: BC-17
GNAHRGIS ID: 252718
County: Bacon
Preliminary NR Assessment: May Meet



Oak Wood Road, North of
Nutmeg Road and Oakwood Road Intersection

Coordinates: 31.52153, -82.57880



- Resource Type** Building
- Resource Use** Residential: Single Family Dwelling
- Date of Construction** c.1935
- Building Type** Bungalow: Front Gable
- Structural System** Balloon Frame
- Style** No Academic Style
- Roof** Gable: Front
- Exterior Cladding** Prism Synthetics: Masonite Siding
- Foundation** Unknown
- Porch** Verandah
- Windows** Double Hung Sash: 6/6 rectangular
- Chimney** Lateral Interior
Material: Brick
- Additional Notes** -hipped roof on porch
-obscured by vegetation
-simple wood porch supports



Bacon County Historic Resource

Field ID: BC-18
GNAHRGIS ID: 252724
County: Bacon
Preliminary NR Assessment: May Meet



390 White Pine Road

Coordinates: 31.48794, -82.58170



Resource Type Building

Resource Use Residential: Single Family Dwelling

Date of Construction c.1966

Building Type Ranch

Structural System Balloon Frame

Style No Academic Style

Roof Gable: Side, Front

Exterior Cladding Brick: Common

Foundation Unknown

Porch Portico

Windows Double hung sash: 6/6 rectangular

Chimney No chimney observed

Additional Notes -crescent plan
-rear addition
-double front door, replacement



Bacon County Historic Resource

Field ID: BC-19
GNAHRGIS ID: 252733
County: Bacon
Preliminary NR Assessment: May Meet



187 Mulberry Road

Coordinates: 31.4798, -82.58173



- Resource Type** Building
- Resource Use** Residential: Single Family Dwelling
- Date of Construction** c.1925
- Building Type** Bungalow: Front Gable
- Structural System** Balloon Frame
- Style** Craftsman
- Roof** Gable: Front
- Exterior Cladding** Wood: Clapboard
- Foundation** Pier: Brick
- Porch** Portico
- Windows** Single Hung Sash: 1/1 rectangular
- Chimney** Lateral Interior: Brick
- Additional Notes**
 - battered columns on brick piers
 - replacement materials
 - additions on rear, side



Bacon County Historic Resource

Field ID: BC-20
GNAHRGIS ID: 252740
County: Bacon
Preliminary NR Assessment: May Meet



Mulberry Road
Corner of Wheeler Farm Entrance

Coordinates: 31.4798, -82.58173



Resource Type Building

Resource Use Vacant

Date of Construction c.1935

Building Type Bungalow: Side Gable

Structural System Balloon Frame

Style Craftsman

Roof Gable: Side

Exterior Cladding Brick: Common

Foundation Unknown

Porch Portico

Windows Double Hung Sash: 3/1 rectangular

Chimney No chimney observed

Additional Notes -brick piers on portico
-exposed rafter tails
-chimney replaced with pipe



Bacon County Historic Resource

Field ID: BC-21
GNAHRGIS ID: 252747
County: Bacon
Preliminary NR Assessment: Does Not Meet



South of Evergreen Road and
Scotch Pine Road Intersection

Coordinates: 31.47321, -82.55324

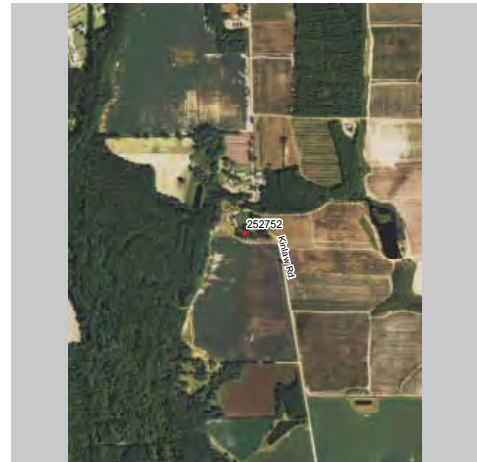


- Resource Type** Building
- Resource Use** Residential: Single Family Dwelling
- Date of Construction** c.1960
- Building Type** Ranch
- Structural System** Balloon Frame
- Style** No Academic Style
- Roof** Gable: Side, Front
- Exterior Cladding** Stucco
- Foundation** Unknown
- Porch** Stoop
- Windows** Double Hung Sash: 1/1 rectangular
- Chimney** No chimney observed
- Additional Notes** -courtyard ranch
-faux random course stone in stucco on recessed facade and shutters



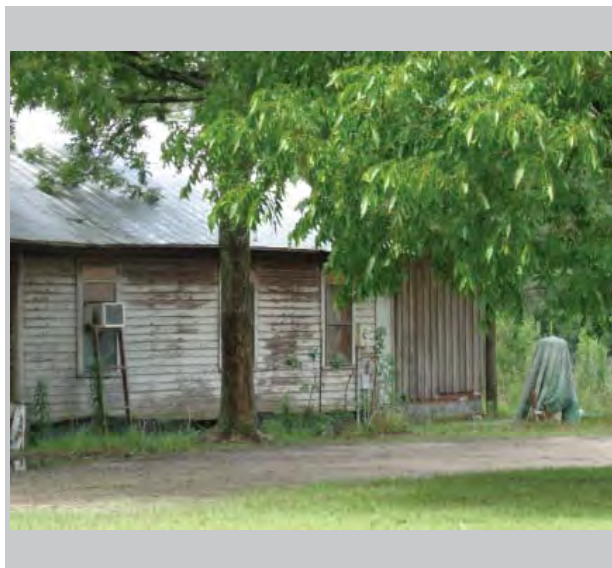
Bacon County Historic Resource

Field ID: BC-22
GNAHRGIS ID: 252752
County: Bacon
Preliminary NR Assessment: May Meet



South of Timber Trail and
Pinecone Road Intersection

Coordinates: 31.49086, -82.51589



Resource Type Building

Resource Use Residential: Single Family Dwelling

Date of Construction c.1930

Building Type Bungalow: Front Gable

Structural System Balloon Frame

Style No Academic Style

Roof Gable: Front

Exterior Cladding Wood: Weatherboard

Foundation Pier: Brick

Porch Verandah

Windows Double Hung Sash: 6/6 rectangular

Chimney No chimney observed

Additional Notes -rectangular vent in front gable
-batten-board addition on rear



Bacon County Historic Resource

Field ID: BC-23
GNAHRGIS ID: 252755
County: Bacon
Preliminary NR Assessment: Does Not Meet



Sweat Cemetery
812 Pine View Road

Coordinates: 31.47474, -82.49841



Resource Type Site

Resource Use Funerary: Cemetery

Date of Construction c.1862

Common Names Sweat

≈ Number of Burials 20

Oldest Burial 1862

Burial Description CSA

Cemetery Description -granite and concrete
ledger stones
-chain link fence surround
-few foot stones
-3 platform graves; 1
outlined



Bacon County Historic Resource

Field ID: BC-24
GNAHRGIS ID: 252756
County: Bacon
Preliminary NR Assessment: Does Not Meet



North of Atlantic Road and
Highway 32 Intersection

Coordinates: 31.54102, -82.58821



Resource Type Building

Resource Use Residential: Single Family Dwelling

Date of Construction c.1900

Building Type Georgian Cottage

Structural System Balloon Frame

Style No Academic Style

Roof Hip, Gable: Side, Front

Exterior Cladding Wood: Clapboard

Foundation Pier with Infill: Concrete

Porch Wrap-Around

Windows Double Hung Sash: 2/2 rectangular

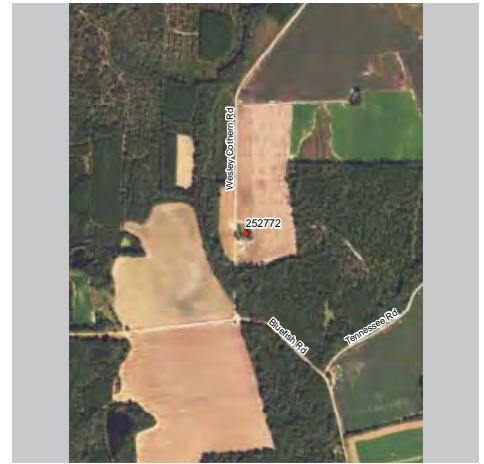
Chimney Lateral interior
Material: Brick

Additional Notes -turned wood columns
-corbelled chimney
-new roof and clapboard
-rear and side addition



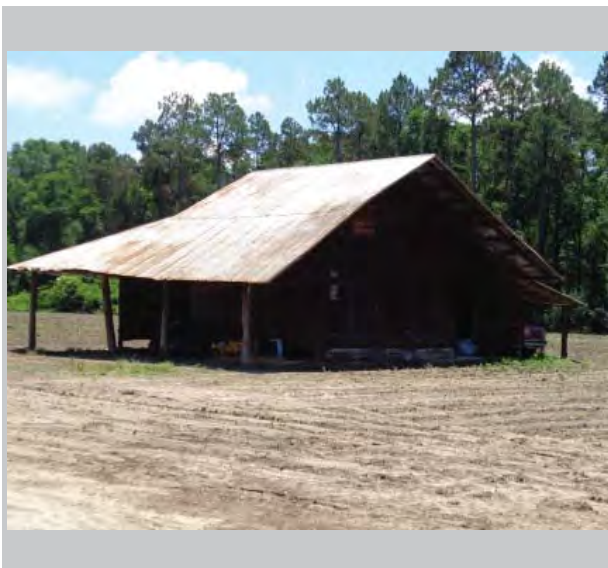
Bacon County Historic Resource

Field ID: BC-25
GNAHRGIS ID: 252772
County: Bacon
Preliminary NR Assessment: May Meet



North of Bluefish Rd-Dark Oak road Intersection

Coordinates: 31.56902, -82.62457



- Resource Type** Building
- Resource Use** Residential: Single Family Dwelling
- Date of Construction** c.1960
- Building Type** Ranch
- Structural System** Balloon Frame
- Style** No Academic Style
- Roof** Gable:Side
- Exterior Cladding** Brick; common Synthetics; vinyl
- Foundation** Unknown
- Porch** Recessed
- Windows** Jalousie; 3/1 and 4/1 rect
- Chimney** No Chimney Observed
- Additional Notes** -integrated carport on the right front
-the entry door is a replacement



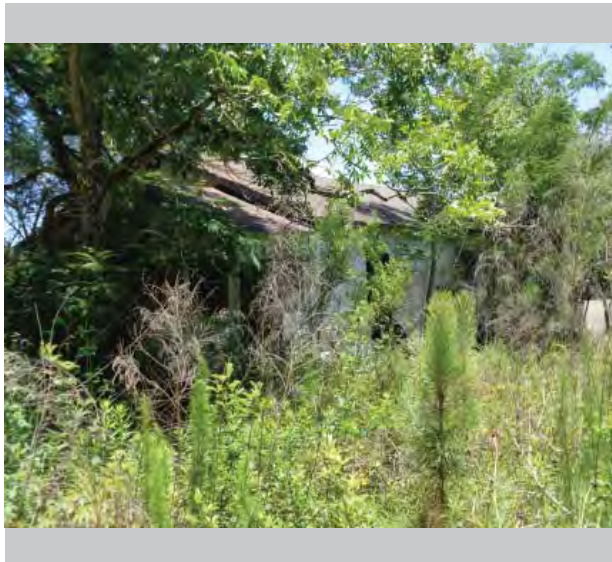
Bacon County Historic Resource

Field ID: BC-26
GNAHRGIS ID: 252774
County: Bacon
Preliminary NR Assessment: May Meet



Southeast of Bluefish Rd-Cedar Ln.
intersection

Coordinates: 31.60504,-82.62406



Resource Type Building

Resource Use Residential: Single Family Dwelling

Date of Construction c.1925

Building Type Bungalow: Front Gable

Structural System Balloon Frame

Style No Academic Style

Roof Gable:Front

Exterior Cladding Synthetics; Asbestos Siding

Foundation Unknown

Porch Verandah

Windows Double Hung Sash: 6/6 rectangular

Chimney No Chimney Observed

Additional Notes -added screened porch
-heavily obscured by vegetation



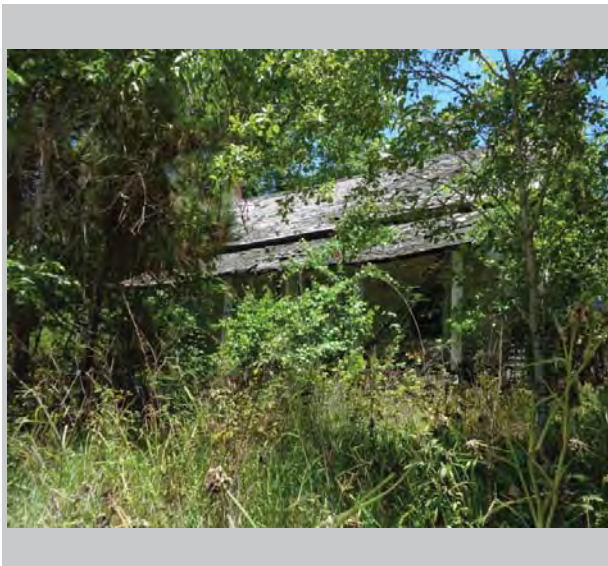
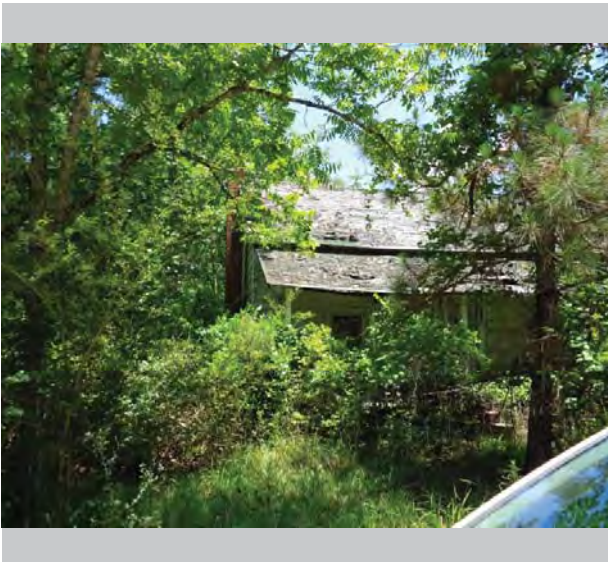
Bacon County Historic Resource

Field ID: BC-27
GNAHRGIS ID: 252776
County: Bacon
Preliminary NR Assessment: May Meet



North of Bluefish Road & Cedar Lane

Coordinates: 31.61089, -82.62679

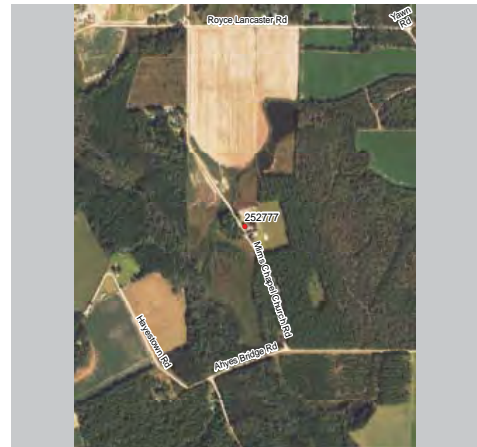


- Resource Type** Building
- Resource Use** Residential: Single Family Dwelling
- Date of Construction** 1900
- Building Type** Central Hallway
- Structural System** Balloon Frame
- Style** No Academic Style
- Roof** Gable:Side
- Exterior Cladding** Wood: Clapboard
- Foundation** Unknown
- Porch** Verandah
- Windows** Double Hung Sash: 6/6, 2/2, Rectangular.
- Chimney** Gable End, Exterior: Brick (x2)
- Additional Notes** Chimney on either end of gable roof. 6 posts on verandah. Mid century replacement windows.

THE UNIVERSITY OF GEORGIA
CE+D COLLEGE OF ENVIRONMENT + DESIGN

Bacon County Historic Resource

Field ID: BC-28
GNAHRGIS ID: 252777
County: Bacon
Preliminary NR Assessment: May Meet



Mims Church and Cemetery
 3 miles east of Nichols, GA

Coordinates: 31.65158, -82.60870



Resource Type Site

Resource Use Funerary: Cemetery

Date of Construction 1890

Common Names Mims, Smart, Johnson

≈ Number of Burials 100

Oldest Burial 1890

Burial Description CSA

Cemetery Description T-shaped chapel, portico at front with stoop. 6 bays deep, new addition at back. Long pyramid steeple. Dates are 1890 to present. Several CSA graves. Metal gates and chain link fence. Mixed new and old.



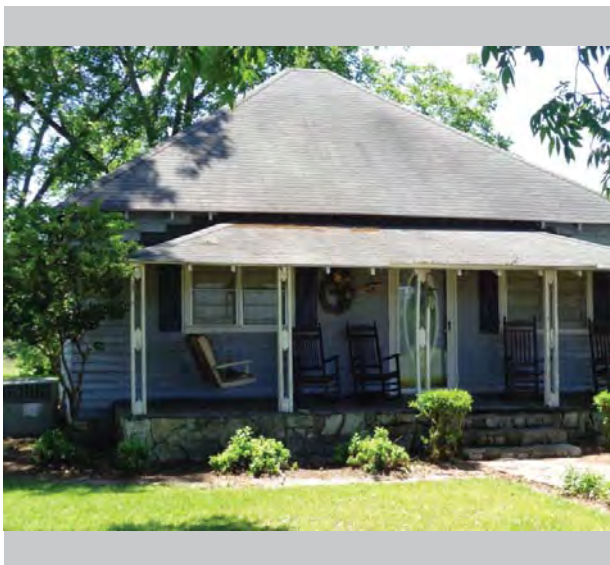
Bacon County Historic Resource

Field ID: BC-29
GNAHRGIS ID: 252745
County: Bacon
Preliminary NR Assessment: May Meet



196 Sponge Road

Coordinates: 31.66325, -82.57519



- Resource Type** Building
- Resource Use** Residential: Single Family Dwelling
- Date of Construction** 1915
- Building Type** Georgian Cottage
- Structural System** Balloon Frame
- Style** No Academic Style
- Roof** Pyramidal
- Exterior Cladding** Wood: Clapboard
- Foundation** Unknown
- Porch** Verandah
- Windows** Double Hung Sash: 2/2, Rectangular.
- Chimney** No Chimney Observed
- Additional Notes** Front verandah with ornamented wood supports. Stone decoration foundation.



Bacon County Historic Resource

Field ID: BC-30
GNAHRGIS ID: 252753
County: Bacon
Preliminary NR Assessment: May Meet



Corner of Shed/Shad Rd and Whiting Road

Coordinates: 31.66012, -82.58781



Resource Type Building

Resource Use Residential: Single Family Dwelling

Date of Construction 1960

Building Type Ranch

Structural System Balloon Frame

Style No Academic Style

Roof Gable: Cross

Exterior Cladding Brick: Veneer

Foundation Unknown

Porch Verandah

Windows Double Hung Sash: 2/2, Rectangular.

Chimney No Chimney Observed

Additional Notes L-shaped ranch with integrated carport. 4 fourlight bays across front. 3 light M.C. door, original.



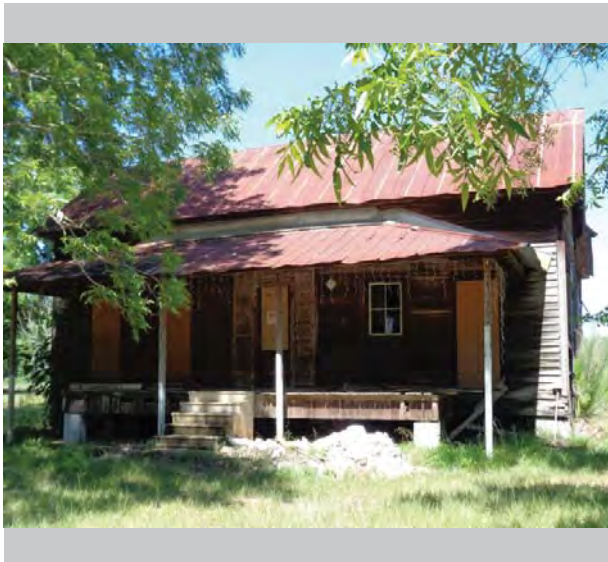
Bacon County Historic Resource

Field ID: BC-31
GNAHRGIS ID: 252764
County: Bacon
Preliminary NR Assessment: May Meet



244 Whiting Road

Coordinates: 31.65562, -82.58672



- Resource Type** Building
- Resource Use** Vacant
- Date of Construction** c.1910
- Building Type** Central Hallway
- Structural System** Balloon Frame
- Style** No Academic Style
- Roof** Gable:Side
- Exterior Cladding** Wood: Clapboard
- Foundation** Concrete Block Piers: No Infill
- Porch** Verandah
- Windows** Fixed: 4/4 rectangular
- Chimney** Gable end: exterior
Material: brick
- Additional Notes** -large rear gable addition
-enclosed transom and sidelight
-some windows boarded



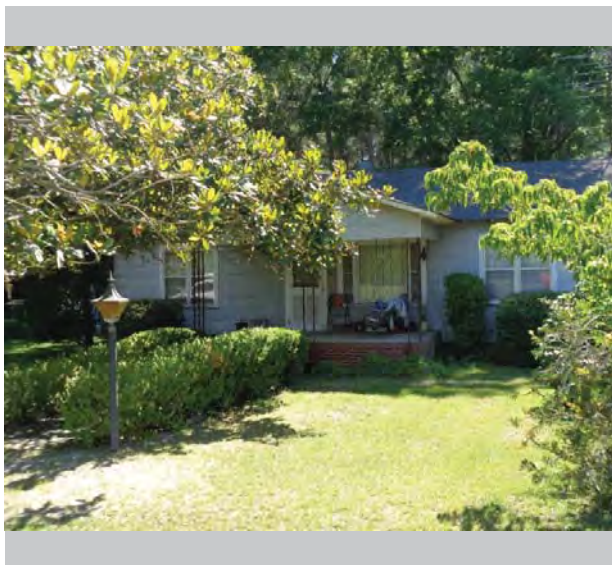
Bacon County Historic Resource

Field ID: BC-32
GNAHRGIS ID: 252765
County: Bacon
Preliminary NR Assessment: Does Not Meet



South of Wolf Pit Church Road-
Liberty Church Road intersection

Coordinates: 31.62929, -82.59894



Resource Type Building

Resource Use Residential: Single Dwelling

Date of Construction c.1950

Building Type Ranch

Structural System Balloon Frame

Style No Academic Style

Roof Gable:Side

Exterior Cladding Masonite Siding

Foundation Concrete: continuous

Porch Stoop

Windows Double-hung sash: 4/4 rectangular

Chimney Lateral: exterior
Material: brick

Additional Notes
-tripartite windows
-wrought iron porch supports
-porch on the back



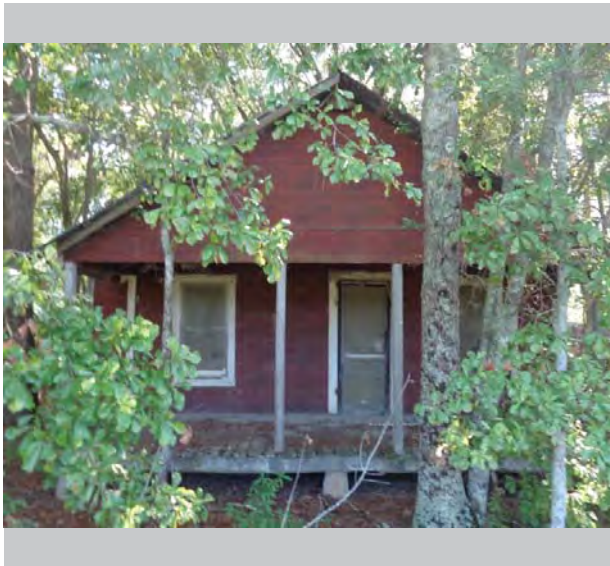
Bacon County Historic Resource

Field ID: BC-33
GNAHRGIS ID: 252766
County: Bacon
Preliminary NR Assessment: May Meet



190-204 Campground Church Road

Coordinates: 31.61081, -82.58225



- Resource Type** Building
- Resource Use** Vacant
- Date of Construction** c.1930
- Building Type** Bungalow: front gable
- Structural System** Balloon Frame
- Style** No Academic Style
- Roof** Gable:front
- Exterior Cladding** Insulbrick Siding
- Foundation** Concrete: pier
- Porch** verandah
- Windows** Double-hung sash: 6/6 rectangular
- Chimney** Lateral: exterior
Material: brick
- Additional Notes** -Two lateral exterior chimneys
-hand-hewn log supports
-mostly original

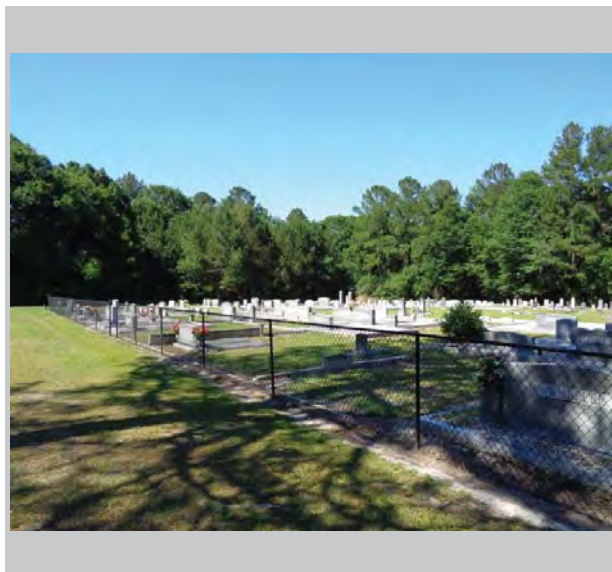
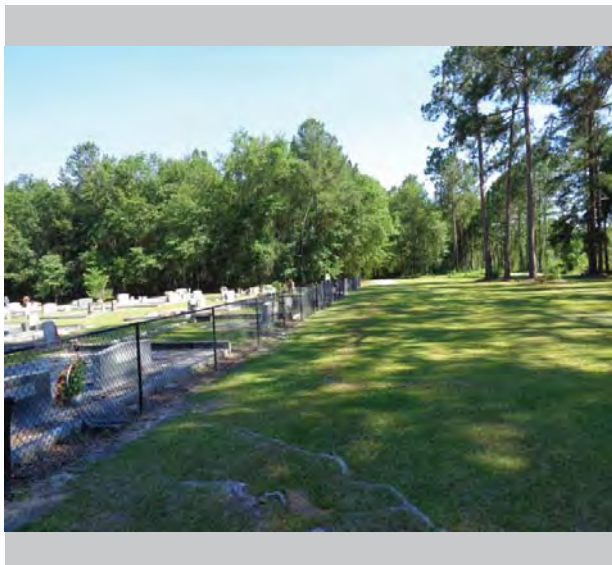
THE UNIVERSITY OF GEORGIA
CE+D COLLEGE OF ENVIRONMENT + DESIGN
Bacon County
Historic Resource

Field ID: BC-34
GNAHRGIS ID: 252768
County: Bacon
Preliminary NR Assessment: May Meet



190-204 Campground Church Road
 Campground Methodist Church and Cemetery

Coordinates: 31.60970, -82.58050



Resource Type Site

Resource Use Funerary: Cemetery

Date of Construction c.1850

Common Names Taylor and Gothner

≈ Number of Burials 250

Oldest Burial c.1850

Burial Description 20 CSA Soldiers

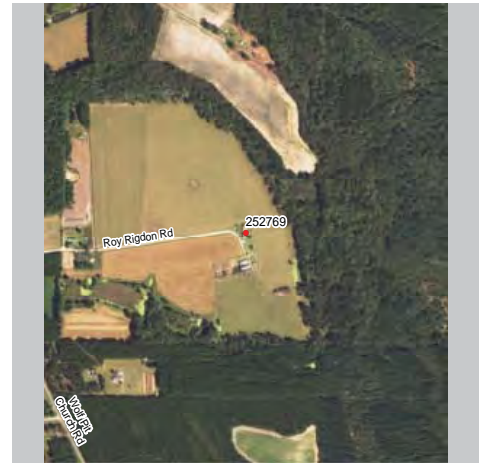
Cemetery Description

- Active Use
- Several small obelisks
- Family plots
- Mixed old and new
- Non-contributing church on the site as well



Bacon County Historic Resource

Field ID: BC-35
GNAHRGIS ID: 252769
County: Bacon
Preliminary NR Assessment: May Meet



100-198 Rigdon Farm Road

Coordinates: 31.59951, -82.57524

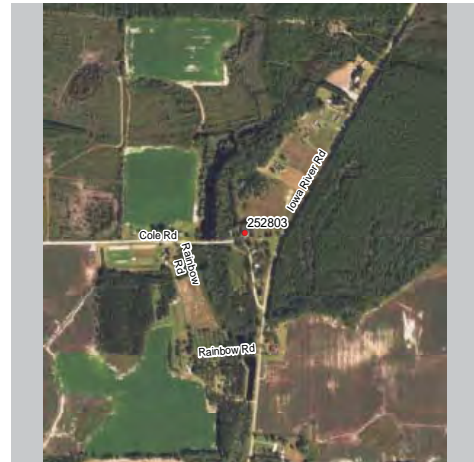


- Resource Type** Building
- Resource Use** Residential: Single dwelling
- Date of Construction** c.1975
- Building Type** Ranch
- Structural System** Balloon Frame
- Style** No Academic Style
- Roof** Gable:cross
- Exterior Cladding** Board-and-batten
Brick
- Foundation** Concrete: continuous
- Porch** recessed
- Windows** Double-hung sash: 6/6 rectangular
- Chimney** Lateral: exterior
Material: brick
- Additional Notes** -rambling ranch
-brick mixed with vertical board
-screened in porch



Bacon County Historic Resource

Field ID: BC-36
GNAHRGIS ID: 252803
County: Bacon
Preliminary NR Assessment: Appears to Meet



North of Buddycole Road-Iowa River
Road intersection

Coordinates: 31.577502, -82.608440



Resource Type Building

Resource Use Residential: Single dwelling

Date of Construction c.1900

Building Type Plantation Plain

Structural System Balloon Frame

Style No Academic Style

Roof Gable: side and front

Exterior Cladding Wood:clapboard

Foundation unknown

Porch Verandah

Windows Double-hung sash: 2/2 rectangular

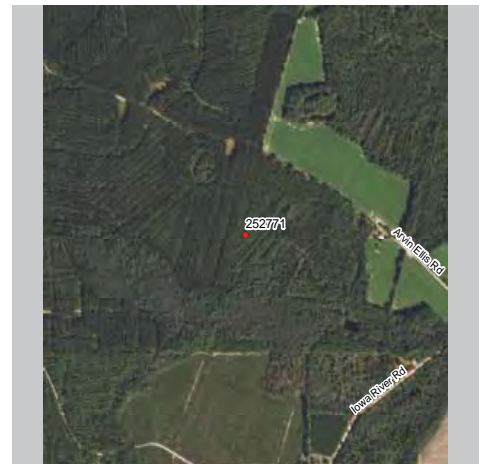
Chimney Both gable ends
Material: brick

Additional Notes -screened porch
-double front gables on 2nd story
-obscured by vegetation



Bacon County Historic Resource

Field ID: BC-37
GNAHRGIS ID: 252771
County: Bacon
Preliminary NR Assessment: Appears to Meet



East of Indian Road-Honeysuckle
Road intersection

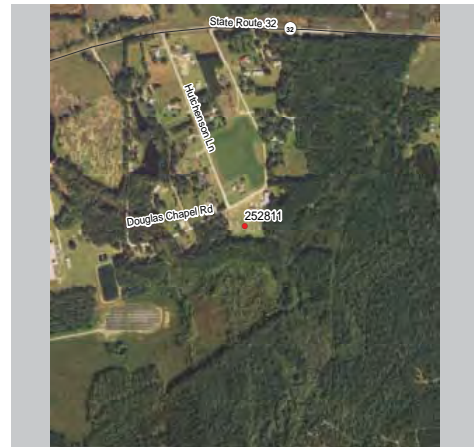
Coordinates: 31.59984, -82.59885



- Resource Type** Building
- Resource Use** Residential: Single dwelling
- Date of Construction** c.1890
- Building Type** Plantation Plain
- Structural System** Balloon Frame
- Style** No Academic Style
- Roof** Gable: side
- Exterior Cladding** Wood:clapboard
- Foundation** unknown
- Porch** Verandah
- Windows** Double-hung sash: 6/6 rectangular
- Chimney** Gable end: exterior
Material: brick
- Additional Notes** -verandahs back and front
-scroll saw porch posts
-windows have pediments

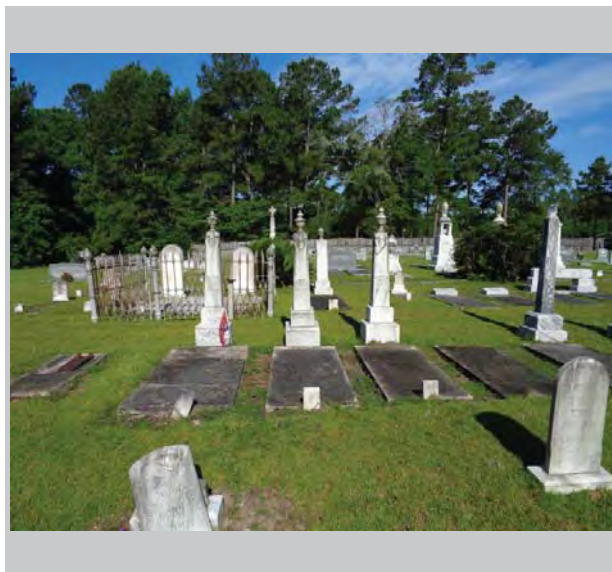
THE UNIVERSITY OF GEORGIA
CE+D COLLEGE OF ENVIRONMENT + DESIGN
Bacon County
Historic Resource

Field ID: BC-38
GNAHRGIS ID: 252811
County: Bacon
Preliminary NR Assessment: Does Not Meet



Douglas Chapel Church and Cemetery
 South of Douglas Chapel Road at Cherrywood Road

Coordinates: 31.53930, -82.54690



Resource Type Site

Resource Use Funerary: Cemetery

Date of Construction c.1850

Common Names Douglas

≈ Number of Burials 300

Oldest Burial c.1850

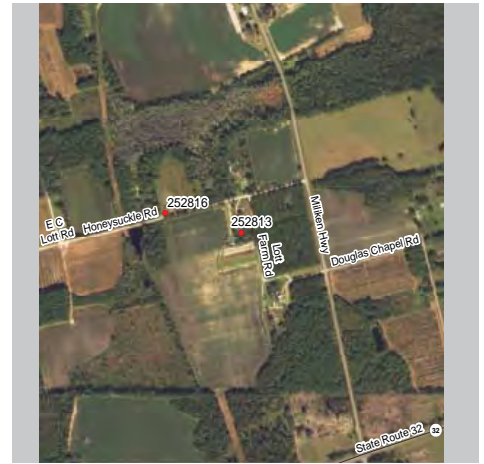
Burial Description -Several CSA soldier graves
 -1 Woodsman of the World

Cemetery Description -Active Use
 -Large obelisks
 -Douglas family plots
 -Mixed old and new
 -Non-contributing church on the site as well



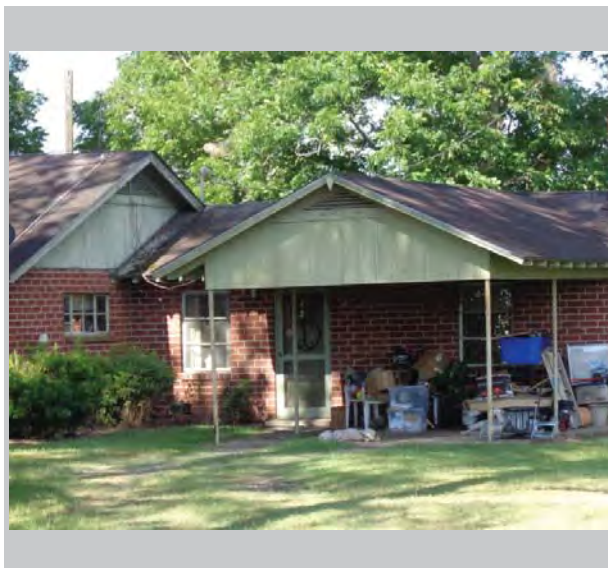
Bacon County Historic Resource

Field ID: BC-39
GNAHRGIS ID: 252813
County: Bacon
Preliminary NR Assessment: May Meet



100-198 Goby Lane

Coordinates: 31.54970, -82.56009

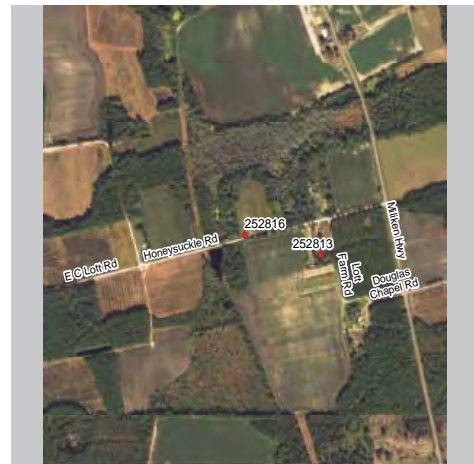


- Resource Type** Building
- Resource Use** Residential: Single dwelling
- Date of Construction** c.1960
- Building Type** Ranch
- Structural System** Balloon Frame
- Style** No Academic Style
- Roof** Gable: side and front
- Exterior Cladding** Wood:clapboard
Brick
- Foundation** unknown
- Porch** Portico
- Windows** Double-hung sash: 1/1 rectangular
- Chimney** Gable end: interior
Material: brick
- Additional Notes** -1/1 windows in sets of 4
-wrought iron porch posts
-exposed rafter tails



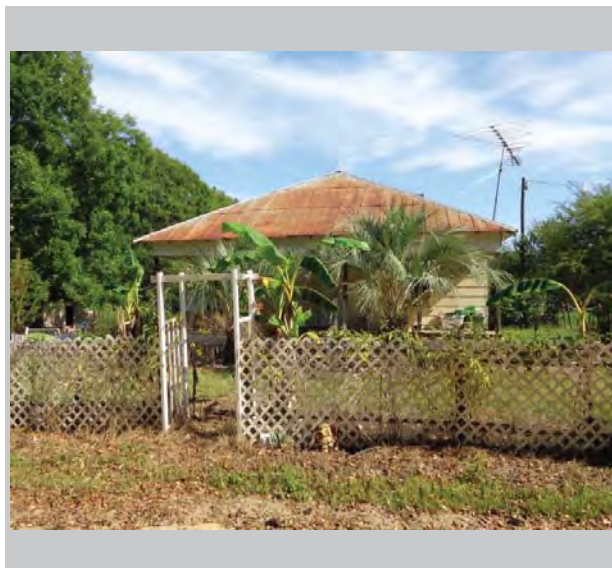
Bacon County Historic Resource

Field ID: BC-40
GNAHRGIS ID: 252816
County: Bacon
Preliminary NR Assessment: May Meet



274-280 Atlantic Road

Coordinates: 31.55025, -82.56272



Resource Type Building

Resource Use Residential: Single dwelling

Date of Construction c.1960

Building Type Pyramid Cottage

Structural System Balloon Frame

Style No Academic Style

Roof Pyramidal

Exterior Cladding Wood:clapboard

Foundation unknown

Porch Portico

Windows Double-hung sash: 6/6 rectangular

Chimney Off-center within roof surface: Brick

Additional Notes -2 bays deep on front and sides
-eaves overhang
-windows are new



Bacon County Historic Resource

Field ID: BC-41
GNAHRGIS ID: 252822
County: Bacon
Preliminary NR Assessment: Does Not Meet



Wesley Chapel Church and Cemetery
South of Wolf Pit Church Road at Black River Road

Coordinates: 31.57154, -82.56675



Resource Type Site

Resource Use Funerary: Cemetery

Date of Construction c.1920

Common Names Taylor, Ellis, Meeks

≈ Number of Burials 350

Oldest Burial c.1920

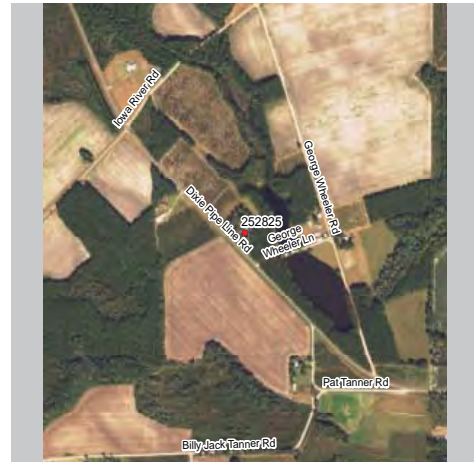
Burial Description -Mostly new graves
-Some platform graves

Cemetery Description -Active Use
-Some outlined family plots
-Mixed old and new
-Non-contributing church on the site as well



Bacon County Historic Resource

Field ID: BC-42
GNAHRGIS ID: 252825
County: Bacon
Preliminary NR Assessment: Does Not Meet



Southeast of Old Dixie Road-
Iowa River Road intersection

Coordinates: 31.61302, -82.55731



Resource Type Building

Resource Use Residential: Single dwelling

Date of Construction c.1980

Building Type Ranch

Structural System Balloon Frame

Style No Academic Style

Roof Hip

Exterior Cladding Brick

Foundation unknown

Porch Recessed

Windows Double-hung sash: 2/2 rectangular

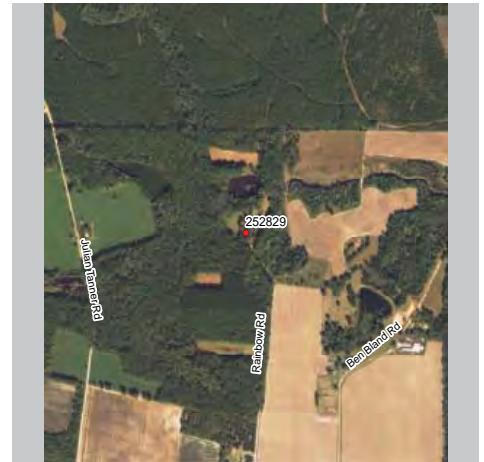
Chimney Lateral Interior
Material: brick

Additional Notes -Z-plan shape currently
-front door recessed
-wrought iron porch supports



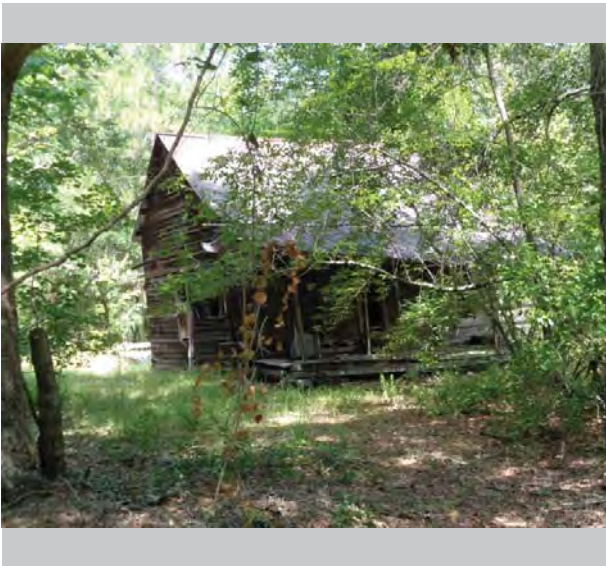
Bacon County Historic Resource

Field ID: BC-43
GNAHRGIS ID: 252829
County: Bacon
Preliminary NR Assessment: Appears to Meet



North of River Lane-Tommy Taylor
Road intersection

Coordinates: 31.63203, -82.55408



Resource Type Building

Resource Use Vacant

Date of Construction c.1920

Building Type Bungalow: front gable

Structural System Balloon Frame

Style No Academic Style

Roof Gable: front

Exterior Cladding Wood:clapboard

Foundation Concrete:pier

Porch Verandah

Windows Double-hung sash: 2/2
rectangular

Chimney Lateral Exterior
Material: brick

Additional Notes -2 chimneys
-part of intact farmstead
-Multiple vernacular
outbuildings extant

THE UNIVERSITY OF GEORGIA
CE+D COLLEGE OF ENVIRONMENT + DESIGN
Bacon County
Historic Resource

Field ID: BC-44
GNAHRGIS ID: 252830
County: Bacon
Preliminary NR Assessment: May Meet



Stewart Cemetery
 Northeast of Stewart Cemetery Road at C.L. Taylor Rd.

Coordinates: 31.60778, -82.52654



Resource Type Site

Resource Use Funerary: Cemetery

Date of Construction c.1906

Common Names Stewart and Bennett

≈ Number of Burials 150

Oldest Burial c.1906

Burial Description -2 CSA soldier graves
 -2 obelisks

Cemetery Description -Active Use
 -Some outlined family plots
 -Some platform graves
 -Mixed old and new
 -Some ledger stones



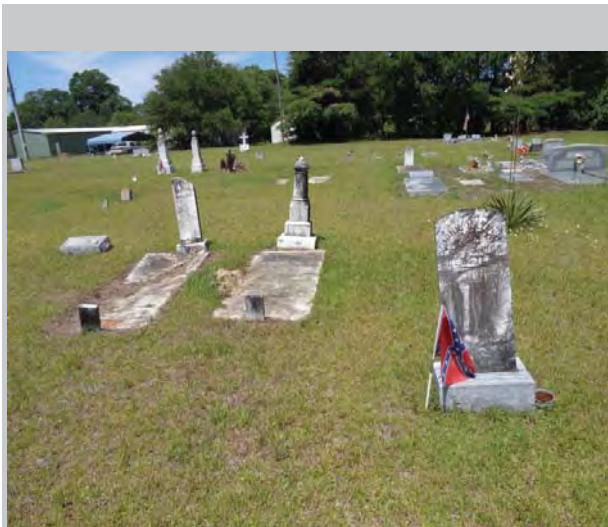
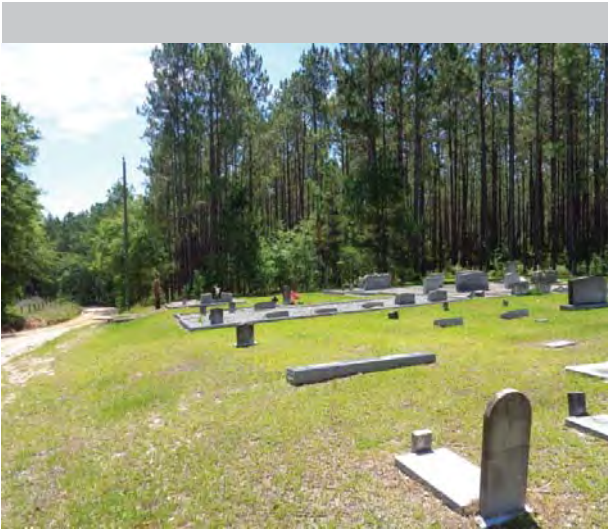
Bacon County Historic Resource

Field ID: BC-45
GNAHRGIS ID: 252831
County: Bacon
Preliminary NR Assessment: May Meet



Holton Cemetery
North of Pine Level Church

Coordinates: 31.67258, -82.53221



Resource Type Site

Resource Use Funerary: Cemetery

Date of Construction c.1900

Common Names Hall, Holton, and Corthen

≈ Number of Burials 60

Oldest Burial c.1900

Burial Description -2 CSA soldier graves
-2 obelisks

Cemetery Description -Active Use
-Some outlined family plots
-Concrete granite ledger stones
-Mixed old and new
-Few footstones

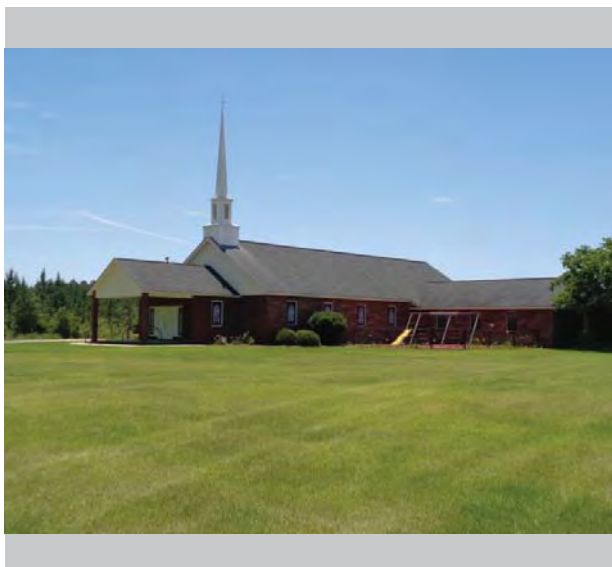
THE UNIVERSITY OF GEORGIA
CE+D COLLEGE OF ENVIRONMENT + DESIGN
Bacon County
Historic Resource

Field ID: BC-46
GNAHRGIS ID: 252832
County: Bacon
Preliminary NR Assessment: Does Not Meet



Unity Baptist Church and Cemetery
 Intersection of Unity Church Road and Ohio Road

Coordinates: 31.67186, -82.48389



Resource Type Site

Resource Use Funerary: Cemetery

Date of Construction c.1907

Common Names Medder

≈ Number of Burials 40

Oldest Burial c.1907

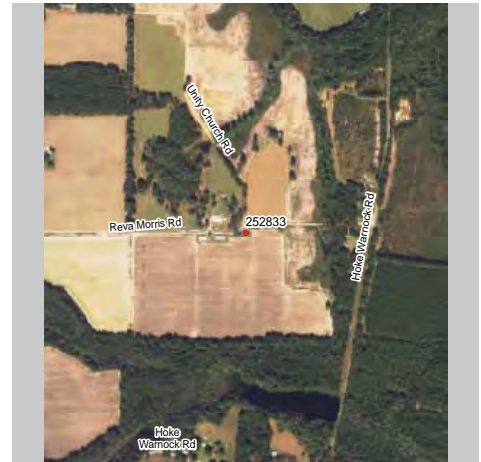
Burial Description -Most graves are new despite founding date

Cemetery Description -Active Use
 -Non-contributing church on site



Bacon County Historic Resource

Field ID: BC-47
GNAHRGIS ID: 252833
County: Bacon
Preliminary NR Assessment: Does Not Meet



At intersection of Reval Morris Road
and Marsh Road

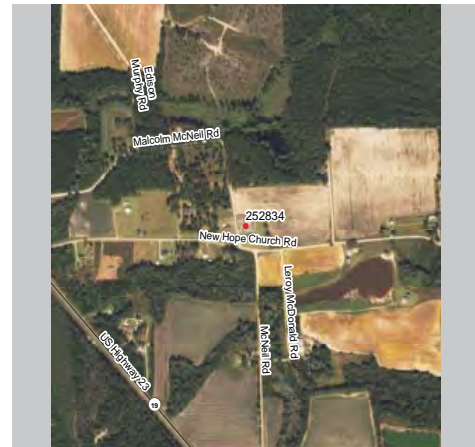
Coordinates: 31.66275, -82.47278



- Resource Type** Building
- Resource Use** Residential: Single dwelling
- Date of Construction** c.1950
- Building Type** Ranch
- Structural System** Balloon Frame
- Style** No Academic Style
- Roof** Gable: side
- Exterior Cladding** Concrete Block
- Foundation** Unknown
- Porch** Recessed
- Windows** Double-hung sash: 2/2 rectangular
- Chimney** No chimney observed
- Additional Notes**
 - compact ranch
 - detached integrated tool shed
 - front door recessed

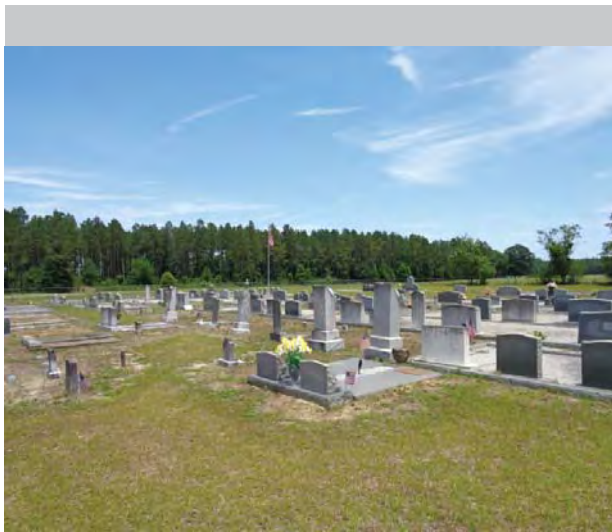
THE UNIVERSITY OF GEORGIA
CE+D COLLEGE OF ENVIRONMENT + DESIGN
Bacon County
Historic Resource

Field ID: BC-48
GNAHRGIS ID: 252834
County: Bacon
Preliminary NR Assessment: Does Not Meet



New Hope Church and Cemetery
 Intersection of New Hope Church Road & McNeil Rd.

Coordinates: 31.64393, -82.46324



Resource Type Site

Resource Use Funerary: Cemetery

Date of Construction c.1886

Common Names Taylor and Burnett

≈ Number of Burials 100

Oldest Burial c.1886

Burial Description -2 obelisks

Cemetery Description

- Active Use
- Non-contributing church on site
- granite ledger stones
- outlined family plots
- chainlink fence surrounds cemetery



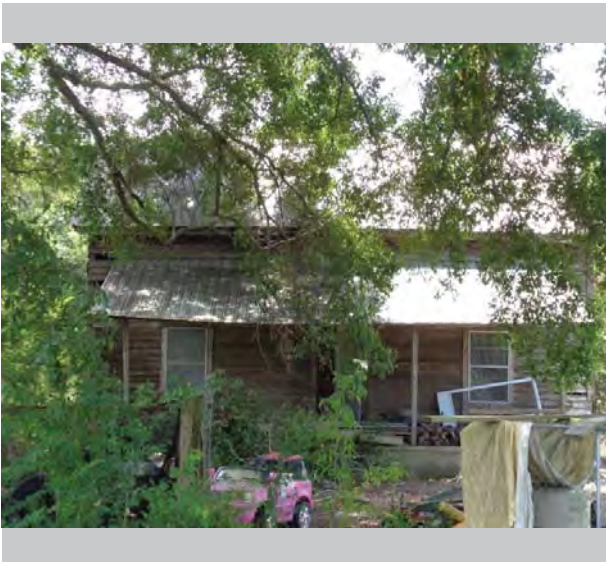
Bacon County Historic Resource

Field ID: BC-49
GNAHRGIS ID: 252827
County: Bacon
Preliminary NR Assessment: May Meet



147-153 Sandy Creek Road

Coordinates: 31.64082, -82.47636

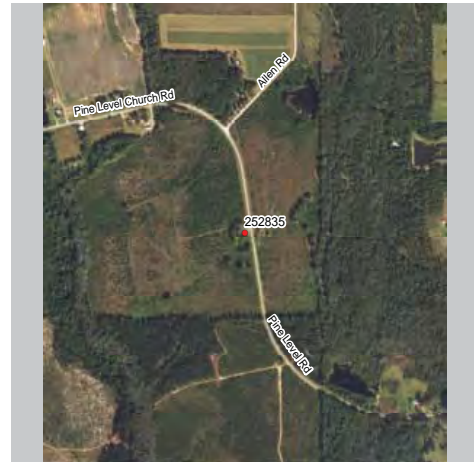


- Resource Type** Building
- Resource Use** Residential: Single dwelling
- Date of Construction** c.1890
- Building Type** Saddlebag
- Structural System** Balloon Frame
- Style** No Academic Style
- Roof** Gable: side
- Exterior Cladding** Wood: weatherboard
- Foundation** Unknown
- Porch** Verandah
- Windows** Double-hung sash: 6/6 rectangular
- Chimney** Lateral Exterior
Material: brick
- Additional Notes** -Central Hall Saddlebag house
-corbelled chimney
-replacement windows



Bacon County Historic Resource

Field ID: BC-50
GNAHRGIS ID: 252835
County: Bacon
Preliminary NR Assessment: Appears to Meet



788 Pine Level Church Road

Coordinates: 31.62419, -82.50964



Resource Type Building

Resource Use Residential: Single dwelling

Date of Construction c.1900

Building Type Central Hallway

Structural System Balloon Frame

Style No Academic Style

Roof Gable: side

Exterior Cladding Wood: weatherboard

Foundation Concrete: pier

Porch Verandah

Windows Double-hung sash: 2/2 rectangular

Chimney Both gable ends
Material: brick

Additional Notes -possibly moved or raised
-side lights on the door
-mid-century awning



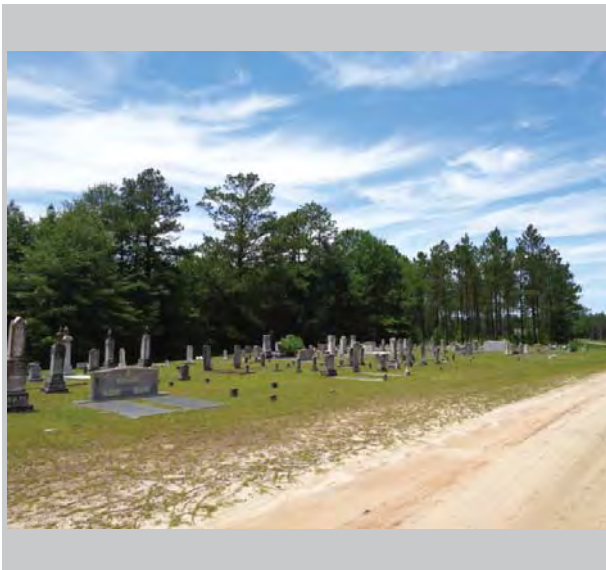
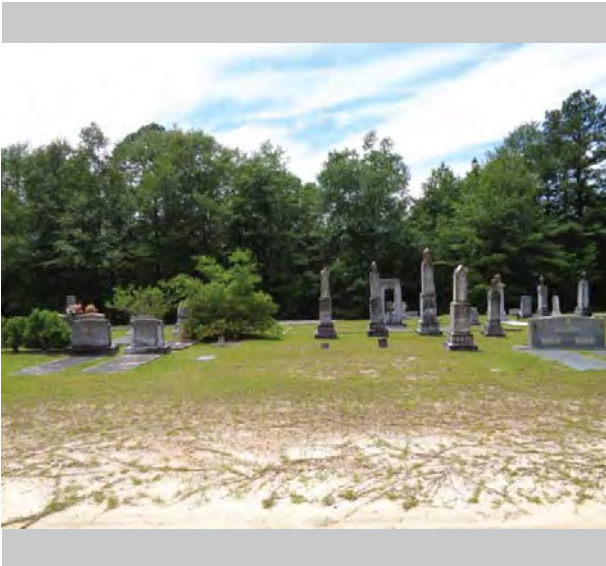
Bacon County Historic Resource

Field ID: BC-51
GNAHRGIS ID: 252838
County: Bacon
Preliminary NR Assessment: Does Not Meet



Pike Cemetery
At U.S. Highway 1-Muskrat Road

Coordinates: 31.59033, -82.46278



Resource Type Site

Resource Use Funerary: Cemetery

Date of Construction c.1886

Common Names Wheeler, Johnson, Taylor

≈ Number of Burials 300

Oldest Burial c.1886

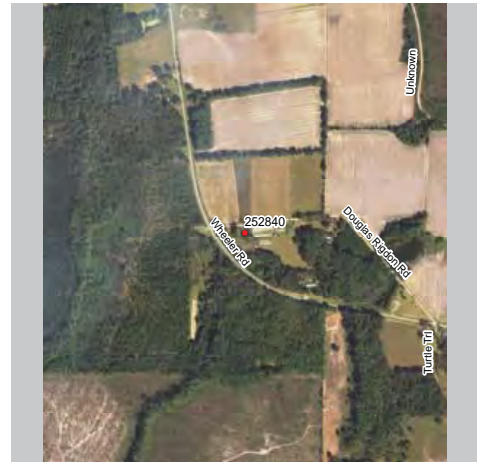
Burial Description
-30 obelisks
-1 Woodsman of the World
-3 CSA soldier graves

Cemetery Description
-Active Use
-Cemetery is split on 2 sides of the road
-200 older graves, and 100 newer



Bacon County Historic Resource

Field ID: BC-52
GNAHRGIS ID: 252840
County: Bacon
Preliminary NR Assessment: May Meet



196 Douglas Rigdon Road

Coordinates: 31.61310, -82.49445



Resource Type Building

Resource Use Residential: Single dwelling

Date of Construction c.1950

Building Type Ranch

Structural System Balloon Frame

Style No Academic Style

Roof Gable: side and front

Exterior Cladding Masonite Siding

Foundation unknown

Porch Recessed

Windows Double-hung sash: 2/2 rectangular

Chimney Off Center Ridgeline
Material: brick

Additional Notes -looks very original
-1 tripartite window
-wrought iron decoration on porch



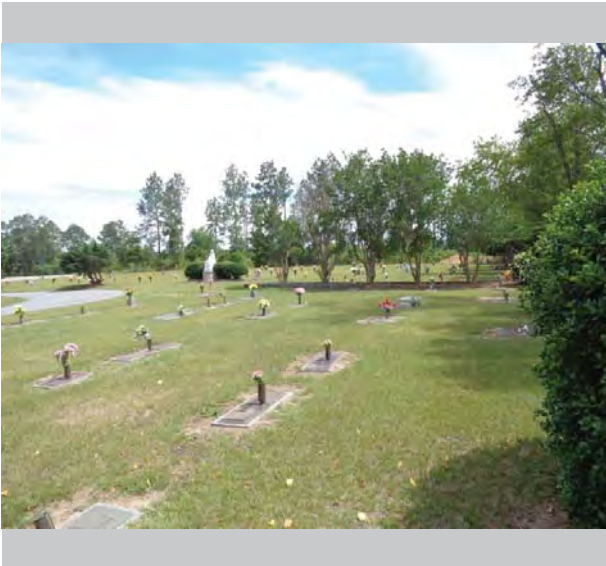
Bacon County Historic Resource

Field ID: BC-53
GNAHRGIS ID: 252841
County: Bacon
Preliminary NR Assessment: Does Not Meet



At U.S. Highway 1-Muskrat Road
Pine Lawn Cemetery

Coordinates: 31.59033, -82.46278



Resource Type Site

Resource Use Funerary: Cemetery

Date of Construction 1950

Common Names Bennett, Lewis, Wheeler

≈ Number of Burials 200

Oldest Burial 1950

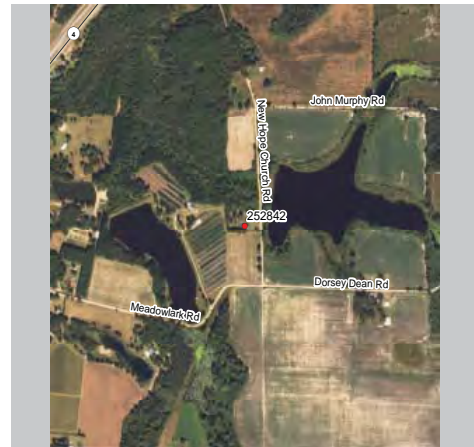
Burial Description Modern cemetery
Perpetual care

Cemetery Description Active Use
Lots of flat headstones

THE UNIVERSITY OF GEORGIA COLLEGE OF ENVIRONMENT + DESIGN

Bacon County Historic Resource

Field ID: BC-54
GNAHRGIS ID: 252842
County: Bacon
Preliminary NR Assessment: May Meet



Springfield Church and Cemetery
 North of Springfield Church Road-Meadowlark Road

Coordinates: 31.63082, -82.44648



Resource Type Site

Resource Use Funerary: Cemetery

Date of Construction 1910

Common Names Altman, Deen

≈ Number of Burials 40

Oldest Burial 1910

Burial Description 6 CSA soldiers
Some obelisks

Cemetery Description

- Active Use
- Church on the site is possibly historic.
- Front gable church with most of original structure and features in tact



Bacon County Historic Resource

Field ID: BC-55
GNAHRGIS ID: 252843
County: Bacon
Preliminary NR Assessment: May Meet



Harrison Cemetery
NE of U.S. Highway 1 Meadowlark Road intersection

Coordinates: 31.63397, -82.45469



Resource Type Site

Resource Use Funerary: Cemetery

Date of Construction 1910

Common Names Harrison

≈ Number of Burials 15

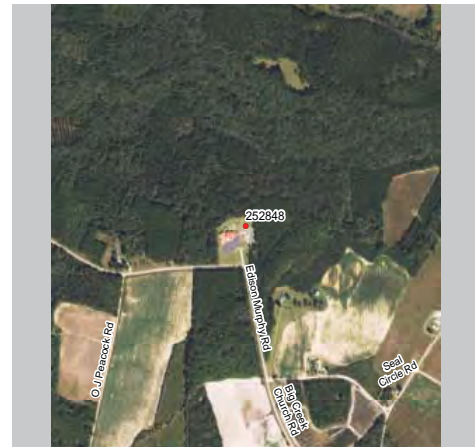
Oldest Burial 1910

Burial Description 6 obelisks
Some small headstones

Cemetery Description -Wire fence surrounds cemetery
-Small family cemetery

THE UNIVERSITY OF GEORGIA
CE+D COLLEGE OF ENVIRONMENT + DESIGN
Bacon County
Historic Resource

Field ID: BC-56
GNAHRGIS ID: 252848
County: Bacon
Preliminary NR Assessment: Does Not Meet



Big Creek Cemetery
 Intersection of Sparrow Road and Big Creek Church

Coordinates: 31.63548, -82.40079



Resource Type Site

Resource Use Funerary: Cemetery

Date of Construction 1880

Common Names Murphy, Altman, Medder

≈ Number of Burials 300

Oldest Burial 1880

Burial Description 4 obelisks
 10 CSA soldiers
 Granite coverings

Cemetery Description -Active use
 -Several granite outlined family plots
 -non-contributing church on site



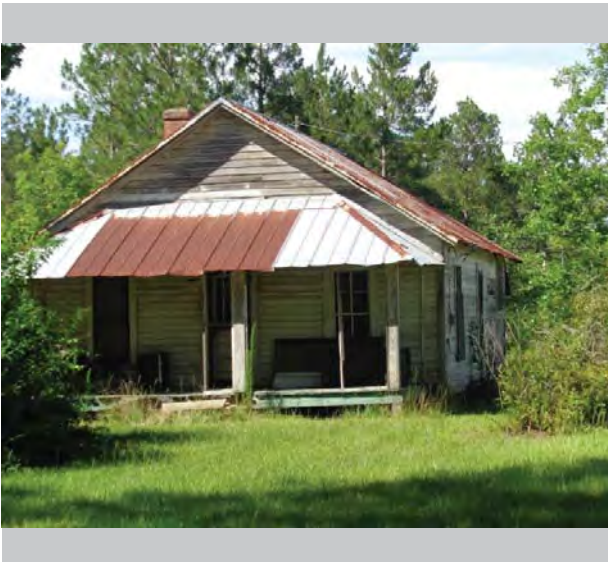
Bacon County Historic Resource

Field ID: BC-57
GNAHRGIS ID: 252851
County: Bacon
Preliminary NR Assessment: May Meet



At the intersection of Seal Circle Road
and Bluejay Road

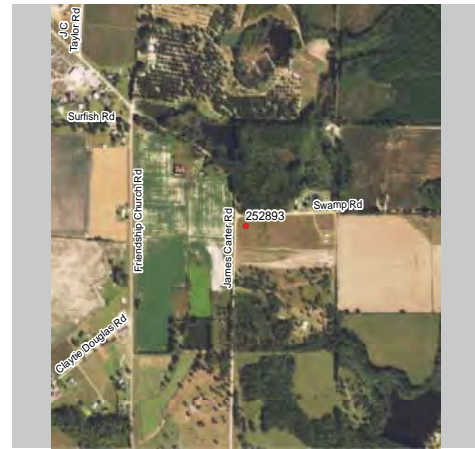
Coordinates: 31.62535, -82.38759



- Resource Type** Building
- Resource Use** Residential: Single Family Dwelling
- Date of Construction** c.1930
- Building Type** Bungalow: Front Gable
- Structural System** Balloon Frame
- Style** No Academic Style
- Roof** Gable:Front
- Exterior Cladding** Wood: Clapboard
- Foundation** Pier: Concrete
- Porch** Verandah
- Windows** Double Hung Sash: 2/2 rectangular
- Chimney** Lateral Interior
Material: brick
- Additional Notes**
 - In character back addition
 - Some replacement porch supports
 - Some windows screened

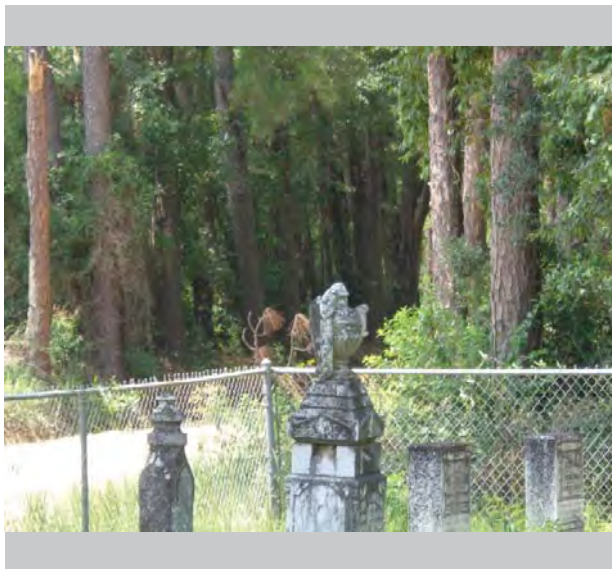
THE UNIVERSITY OF GEORGIA
Bacon County
 COLLEGE OF ENVIRONMENT + DESIGN
CE+D
Historic Resource

Field ID: BC-58
GNAHRGIS ID: 252893
County: Bacon
Preliminary NR Assessment: May Meet



Taylor Cemetery
 At intersection of Pondhouse Road and Swamp Road

Coordinates: 31.56763, -82.48055



Resource Type Site

Resource Use Funerary: Cemetery

Date of Construction c. 1918

Common Names Stewart

≈ Number of Burials 40

Oldest Burial 1918

Burial Description -oldest grave dates from 1918
 -newest grave is 1932

Cemetery Description -possible unmarked graves
 -one decorative grave with angel holding an urn
 -chainlink fence



Bacon County Historic Resource

Field ID: BC-59
GNAHRGIS ID: 252852
County: Bacon
Preliminary NR Assessment: Appears to Meet



South of Copper Lake Road-
Swordfish Road intersection

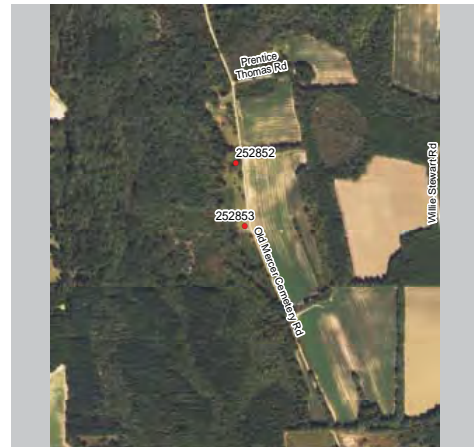
Coordinates: 31.59998, -82.56674



- Resource Type** Building
- Resource Use** Residential: Single Family Dwelling
- Date of Construction** c.1925
- Building Type** Bungalow: Front Gable
- Structural System** Balloon Frame
- Style** No Academic Style
- Roof** Gable:Front
- Exterior Cladding** Wood: Clapboard
- Foundation** Pier: Brick
- Porch** Verandah
- Windows** Double Hung Sash: 3/1 rectangular
- Chimney** Lateral Exterior
Material: brick
- Additional Notes** -Chimney chopped of at top
-exposed rafter tails
-craftsmen style

THE UNIVERSITY OF GEORGIA
CE+D COLLEGE OF ENVIRONMENT + DESIGN
Bacon County
Historic Resource

Field ID: BC-60
GNAHRGIS ID: 252853
County: Bacon
Preliminary NR Assessment: Does Not Meet



Mercer Cemetery
 NW corner of Copper Lake Road-South Chad Lake Rd
Coordinates: 31.59816, -82.56642



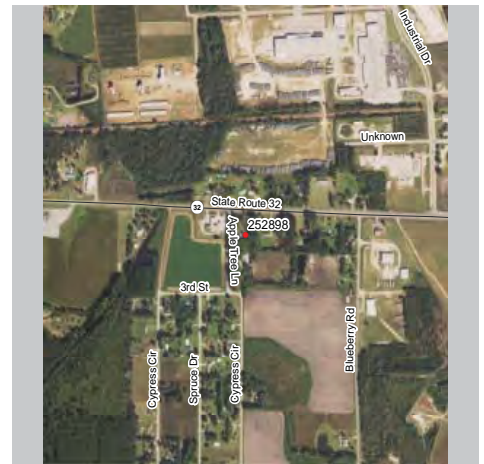
Resource Type Site
Resource Use Funerary: Cemetery
Date of Construction 1900
Common Names Mercer, Taylor, Tanner
≈ Number of Burials 70
Oldest Burial 1900
Burial Description 3 obelisks
 5 family plots

Cemetery Description -Active use
 -Several granite outlined family plots
 -Most are small headstones



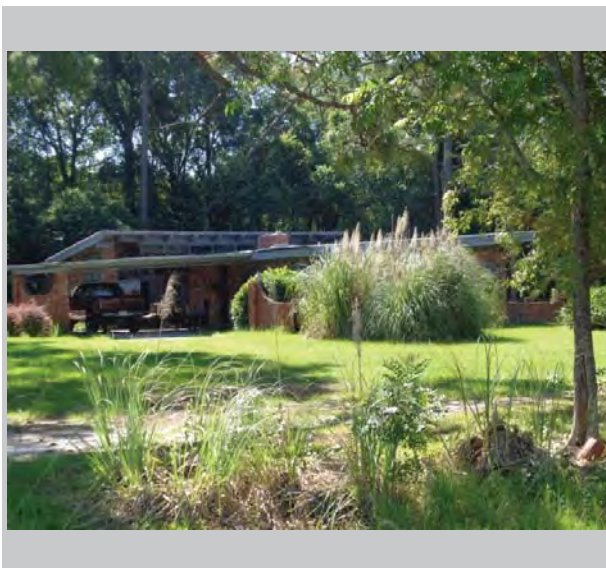
Bacon County Historic Resource

Field ID: BC-61
GNAHRGIS ID: 252898
County: Bacon
Preliminary NR Assessment: Appears to Meet



At intersection of Apple Tree Lane and
State Route 32

Coordinates: 31.543456, -82.517895



- Resource Type** Building
- Resource Use** Residential: Single Family Dwelling
- Date of Construction** c. 1960
- Building Type** Rambling Ranch
- Structural System** Balloon Frame
- Style** No Academic Style
- Roof** Shed/pent
- Exterior Cladding** Brick
- Foundation** Unknown
- Porch** Porte-Cochere
- Windows** Fixed: Single Pane
- Chimney** Off-center Within Roof Surface: Brick
- Additional Notes** -Eichleresque ranch
-porte-cochere out front
-scalloped brick wall in front

THE UNIVERSITY OF GEORGIA
CE+D COLLEGE OF ENVIRONMENT + DESIGN
Bacon County
Historic Resource

Field ID: BC-62
GNAHRGIS ID: 252900
County: Bacon
Preliminary NR Assessment: May Meet



Patterson Cemetery
 East of Boardwalk Road-State Road 226 intersection

Coordinates: 31.59283, -82.50272



Resource Type Site

Resource Use Funerary: Cemetery

Date of Construction c. 1834

Common Names Stewart

≈ Number of Burials 40

Oldest Burial 1834

Burial Description -hand engraved slabs and headstones
 -concrete ledger stones

Cemetery Description -Active Use
 -Granite outlined family plots
 -Few footstones



Bacon County Historic Resource

Field ID: BC-63
GNAHRGIS ID: 252901
County: Bacon
Preliminary NR Assessment: May Meet



At intersection of West 4th Street
and Red River Lane

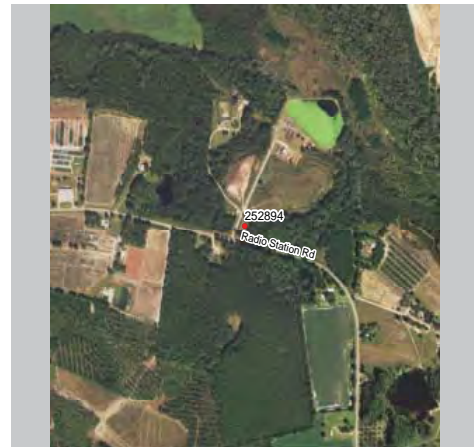
Coordinates: 31.58044, -82.51263



- Resource Type** Building
- Resource Use** Residential: Single Family Dwelling
- Date of Construction** c. 1960
- Building Type** Linear Ranch
- Structural System** Balloon Frame
- Style** No Academic Style
- Roof** Gable:Cross
- Exterior Cladding** Brick
- Foundation** Unknown
- Porch** Verandah
- Windows** Fixed: Single Pane
- Chimney** Off-center, ridgeline: Brick
- Additional Notes** -fixed chicago windows with flanking 2/2 double hung sash windows
-intergrated carport

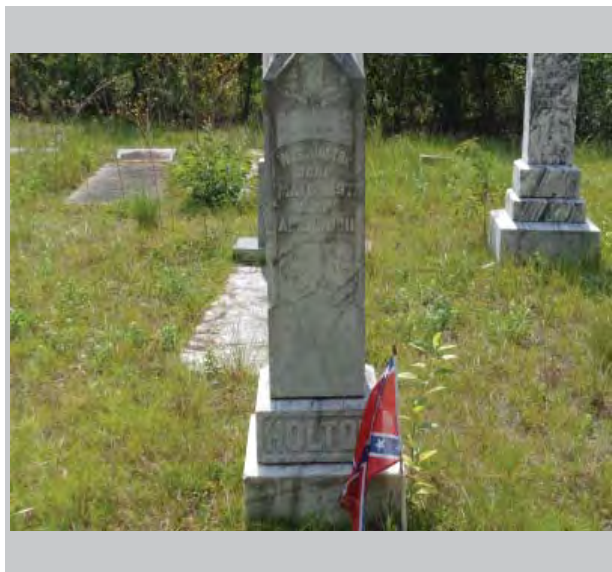
THE UNIVERSITY OF GEORGIA
CE+D COLLEGE OF ENVIRONMENT + DESIGN
Bacon County
Historic Resource

Field ID: BC-64
GNAHRGIS ID: 252894
County: Bacon
Preliminary NR Assessment: May Meet



Holton Cemetery
 East of Radio Station Road-Victory Lane intersection

Coordinates: 31.51938, -82.43538



Resource Type Site

Resource Use Funerary: Cemetery

Date of Construction c. 1904

Common Names Rigdon and Holton

≈ Number of Burials 35

Oldest Burial 1904

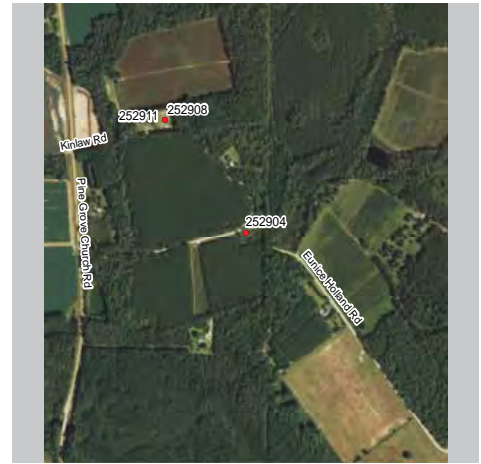
Burial Description -1 CSA grave
 -1904 earliest observed burial

Cemetery Description -around 10 graves with simple headstones and no text
 -some unmarked stones



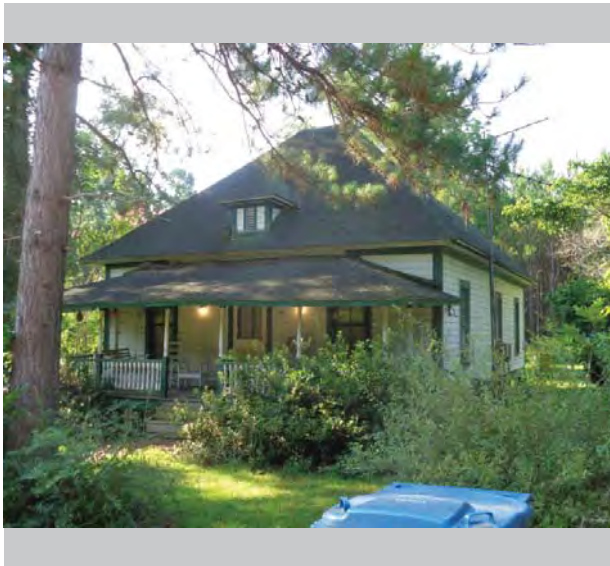
Bacon County Historic Resource

Field ID: BC-65
GNAHRGIS ID: 252904
County: Bacon
Preliminary NR Assessment: May Meet



169 Birchwood Road

Coordinates: 31.48186, -82.49275



- Resource Type** Building
- Resource Use** Residential: Single Family Dwelling
- Date of Construction** c. 1900
- Building Type** Georgian Cottage
- Structural System** Balloon Frame
- Style** No Academic Style
- Roof** Pyramidal
- Exterior Cladding** Wood: clapboard
- Foundation** Brick: Pier
- Porch** Verandah
- Windows** Double-hung sash, 2/2, rectangular
- Chimney** Off-center, within roof surface: Brick
- Additional Notes** -one chimney on right side, and a corbelled chimney on the back
-vent dormer on front of roof

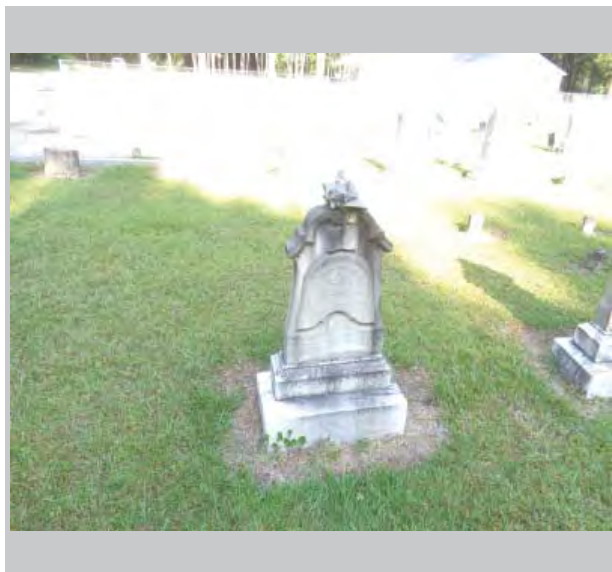
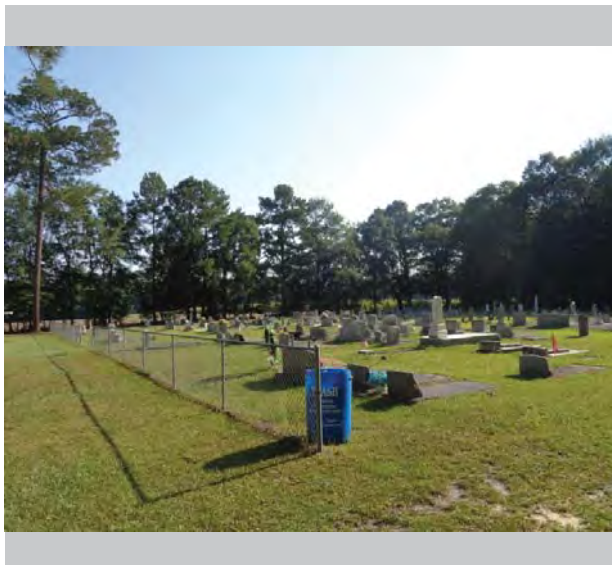
THE UNIVERSITY OF GEORGIA
CE+D COLLEGE OF ENVIRONMENT + DESIGN
Bacon County
Historic Resource

Field ID: BC-66
GNAHRGIS ID: 252908
County: Bacon
Preliminary NR Assessment: May Meet



Pine Grove Cemetery
 At Pinegrove Road-Timber Trail intersection

Coordinates: 31.48501, -82.49555



Resource Type Site

Resource Use Funerary: Cemetery

Date of Construction c. 1905

Common Names Thigpin, Ellis, and Johnson

≈ Number of Burials 250

Oldest Burial 1905

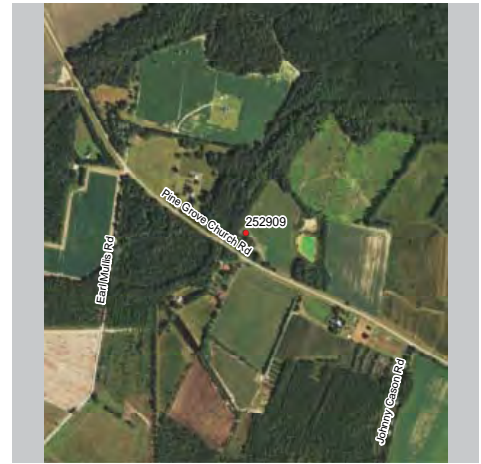
Burial Description 10 CSA graves
 -3 obelisks

Cemetery Description -outlying family plots
 -wood headstones
 -chainlink fence



Bacon County Historic Resource

Field ID: BC-67
GNAHRGIS ID: 252909
County: Bacon
Preliminary NR Assessment: May Meet



Southeast of Pinegrove Road-Pine View Road intersection

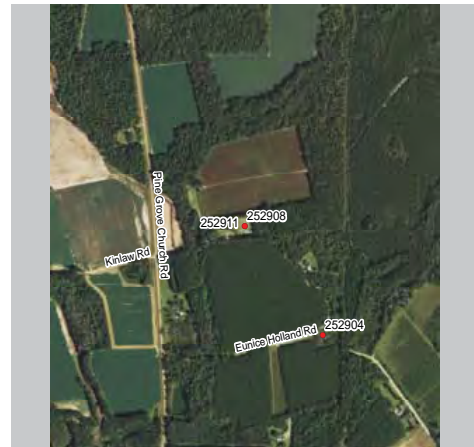
Coordinates: 31.46496, -82.48920



- Resource Type** Building
- Resource Use** Residential: Single Family Dwelling
- Date of Construction** c. 1920
- Building Type** Bungalow: Front Gable
- Structural System** Balloon Frame
- Style** No Academic Style
- Roof** Gable: Front
- Exterior Cladding** Wood: weatherboard
- Foundation** CMU: Pier
- Porch** Portico
- Windows** Double-hung sash, 2/2, rectangular
- Chimney** No chimney observed
- Additional Notes** - battered wood columns on brick piers
-house was possibly moved or raised

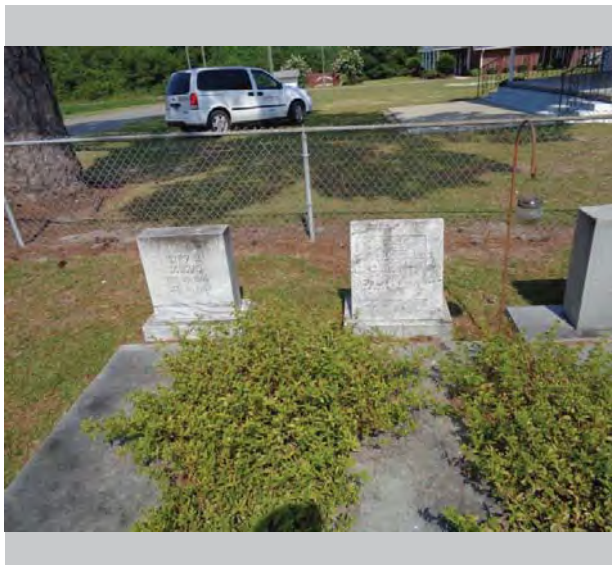
THE UNIVERSITY OF GEORGIA
CE+D COLLEGE OF ENVIRONMENT + DESIGN
Bacon County
Historic Resource

Field ID: BC-68
GNAHRGIS ID: 252911
County: Bacon
Preliminary NR Assessment: Does Not Meet



Lees Chapel Cemetery
 264 Lees Chapel Road

Coordinates: 31.48501, -82.49555



Resource Type Site

Resource Use Funerary: Cemetery

Date of Construction c. 1940

Common Names Lee, Sweat, Johnson, and Douglas

≈ Number of Burials 200

Oldest Burial 1940

Burial Description -Most burials are new

Cemetery Description
 -outlined family plots
 -active use
 -chainlink fence



Bacon County Historic Resource

Field ID: BC-69
GNAHRGIS ID: 252912
County: Bacon
Preliminary NR Assessment: May Meet



Elizabeth Chapel Cemetery
East of Elizabeth Chapel Road@U.S. Highway 1

Coordinates: 31.46674, -82.43562



Resource Type Site

Resource Use Funerary: Cemetery

Date of Construction c. 1890

Common Names Taylor and Lee

≈ Number of Burials 100

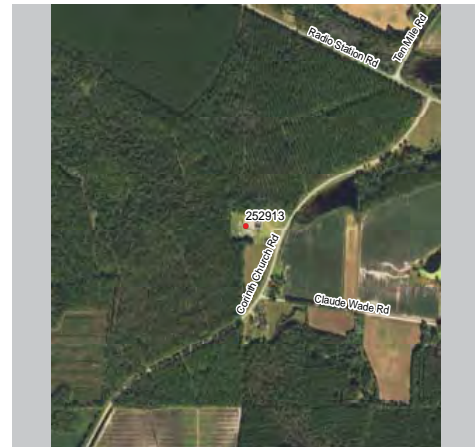
Oldest Burial 1890

Burial Description -5 CSA graves
-4 large obelisks

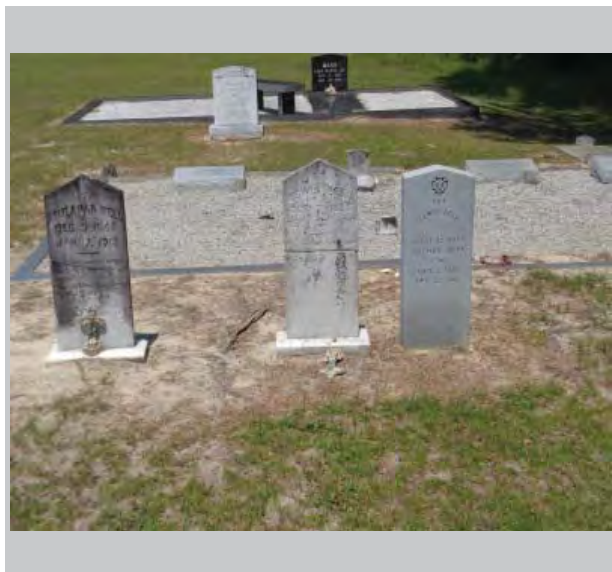
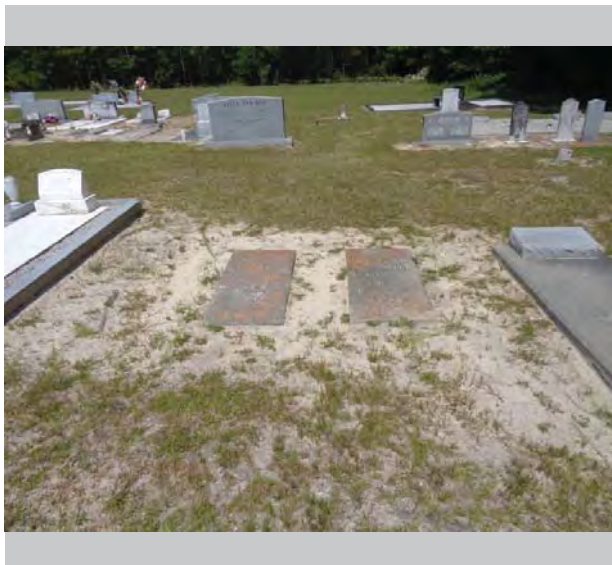
Cemetery Description -outlined family plots
-active use
-chainlink fence

THE UNIVERSITY OF GEORGIA
CE+D COLLEGE OF ENVIRONMENT + DESIGN
Bacon County
Historic Resource

Field ID: BC-70
GNAHRGIS ID: 252913
County: Bacon
Preliminary NR Assessment: May Meet



Corinth Church Cemetery
 North of Corinth Road-Wade Road intersection
Coordinates: 31.44842, -82.38800



- Resource Type** Site
- Resource Use** Funerary: Cemetery
- Date of Construction** c. 1910
- Common Names** Mullis, Carter, and Allen
- ≈ Number of Burials** 250
- Oldest Burial** 1910
- Burial Description**
 - 2 CSA graves
 - hand etched concrete ledger stones
- Cemetery Description**
 - outlined family plots
 - active use
 - granite ledger stones



Bacon County Historic Resource

Field ID: BC-71
GNAHRGIS ID: 252915
County: Bacon
Preliminary NR Assessment: May Meet



West of Johnson Lake Road-Sunflower Lane intersection

Coordinates: 31.51676, -82.38982

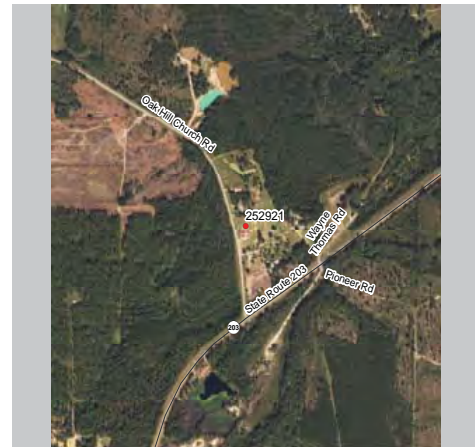


- Resource Type** Building
- Resource Use** Residential: Single Family Dwelling
- Date of Construction** c. 1960
- Building Type** Linear Ranch
- Structural System** Balloon Frame
- Style** No Academic Style
- Roof** Hip
- Exterior Cladding** Brick: Veneer
- Foundation** Concrete Slab
- Porch** recessed
- Windows** Double-hung sash, 4/4, rectangular
- Chimney** No chimney observed
- Additional Notes** -2 car carport on the the right side with added garage doors
-added carport on left side

THE UNIVERSITY OF GEORGIA
CE+D COLLEGE OF ENVIRONMENT + DESIGN

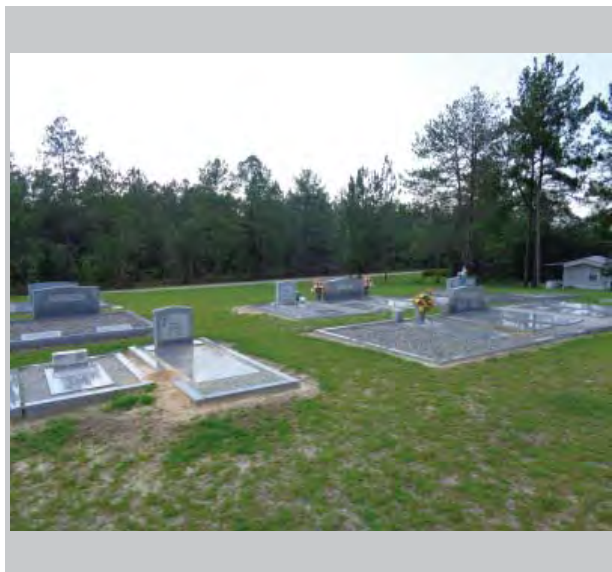
Bacon County Historic Resource

Field ID: BC-72
GNAHRGIS ID: 252921
County: Bacon
Preliminary NR Assessment: Does Not Meet



Oak Hill Baptist Church and Cemetery
 994 Oak Hill Church Road

Coordinates: 31.58905, -82.31924



Resource Type Site

Resource Use Funerary: Cemetery

Date of Construction c. 1961

Common Names Smart, Williams, Taylor, and Bates

≈ Number of Burials 20

Oldest Burial 1961

Burial Description -mostly new graves

Cemetery Description
 -outlined family plots
 -active use
 -granite ledger stones



Bacon County Historic Resource

Field ID: BC-73
GNAHRGIS ID: 252923
County: Bacon
Preliminary NR Assessment: May Meet



Wesley Chapel Cemetery
121 Wesley Chapel Road

Coordinates: 31.58109, -82.32434



Resource Type Site

Resource Use Funerary: Cemetery

Date of Construction c. 1860

Common Names Turner, Lee, and Boatright

≈ Number of Burials 500

Oldest Burial 1860

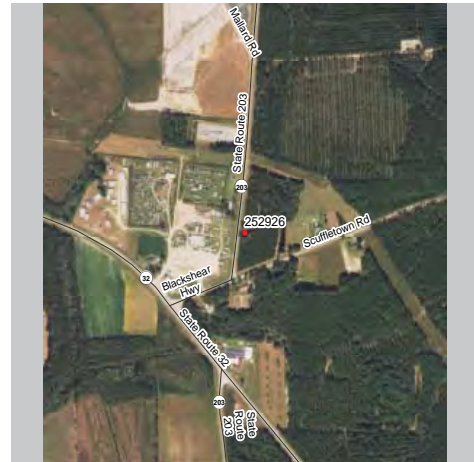
Burial Description -5 CSA graves
-several woodman of the world

Cemetery Description -15 obelisks
-2 Victorian iron enclosures
-outlined family plots

THE UNIVERSITY OF GEORGIA
COLLEGE OF ENVIRONMENT + DESIGN
CE+D

Bacon County Historic Resource

Field ID: BC-74
GNAHRGIS ID: 252926
County: Bacon
Preliminary NR Assessment: May Meet



North of State Road 203-Scuffletown Highway intersection

Coordinates: 31.54316, -82.37076



- Resource Type** Building
- Resource Use** Residential: Single Family Dwelling
- Date of Construction** c. 1950
- Building Type** Linear Ranch
- Structural System** Balloon Frame
- Style** No Academic Style
- Roof** Gable: Side
- Exterior Cladding** CMU Block
- Foundation** Unknown
- Porch** Verandah
- Windows** Jalousie, single pane, rectangular
- Chimney** Side - exterior: Brick
- Additional Notes** -concrete block appears to be painted blue
 -paired jalousie windows
 -5 wood porch supports



Bacon County Historic Resource

Field ID: BC-75
GNAHRGIS ID: 252928
County: Bacon
Preliminary NR Assessment: May Meet



124-132 Dedge Farm Road

Coordinates: 31.54554, -82.41579



Resource Type Structure

Resource Use Government: Public Works

Date of Construction c. 1940

Building Type Forest Fire Lookout Tower

Structural System Metal/Steel Framing

Style No Academic Style

Roof

Exterior Cladding Steel Supports

Foundation Steel Supports

Porch N/A

Windows Fixed, single pane, rectangular

Chimney N/A

Additional Notes -15 flights of stairs
-single pen building on top



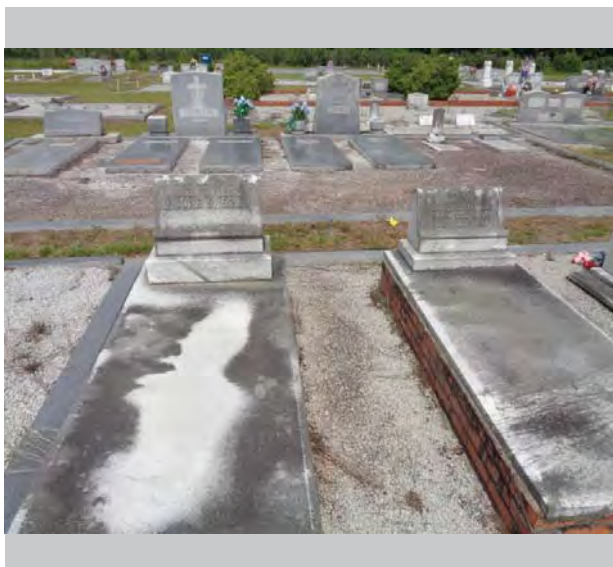
Bacon County Historic Resource

Field ID: BC-76
GNAHRGIS ID: 252941
County: Bacon
Preliminary NR Assessment: Does Not Meet



Damascus Cemetery
Damascus road north of Scuffletown rd intersection

Coordinates: 31.54092, -82.28665



Resource Type Site

Resource Use Funerary: Cemetery

Date of Construction c.1923

Common Names Hyers, Boatright, Strickland

≈ Number of Burials 100

Oldest Burial c. 1923

Burial Description -woodsman of the world
-3 large obelisks

Cemetery Description -outlined family plots
-infant graves
-Active use
-some urns



Bacon County Historic Resource

Field ID: BC-77
GNAHRGIS ID: 252944
County: Bacon
Preliminary NR Assessment: May Meet



South of Beaver Road-Terrier Trail intersection

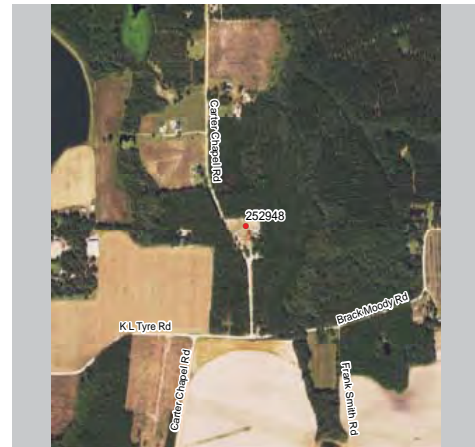
Coordinates: 31.53809, -82.28050



- Resource Type** Building
- Resource Use** Residential: Single Family Dwelling
- Date of Construction** c.1920
- Building Type** Bungalow: front gable
- Structural System** Balloon Frame
- Style** No Academic Style
- Roof** Gable:Front
- Exterior Cladding** Board-and-batten: vertical board
- Foundation** Pier:Brick
- Porch** Portico
- Windows** Double Hung Sash: 6/6 rectangular
- Chimney** No chimney observed
- Additional Notes** -craftsman battered wood columns on brick piers
-looks to have been a general store

THE UNIVERSITY OF GEORGIA
CE+D COLLEGE OF ENVIRONMENT + DESIGN
Bacon County
Historic Resource

Field ID: BC-78
GNAHRGIS ID: 252948
County: Bacon
Preliminary NR Assessment: Does Not Meet



North of Carters Chapel Road-Fox Road intersection

Coordinates: 31.54322, -82.26355



Resource Type Site

Resource Use Funerary: Cemetery

Date of Construction c.1903

Common Names Previs, Boatright

≈ Number of Burials 175

Oldest Burial c. 1903

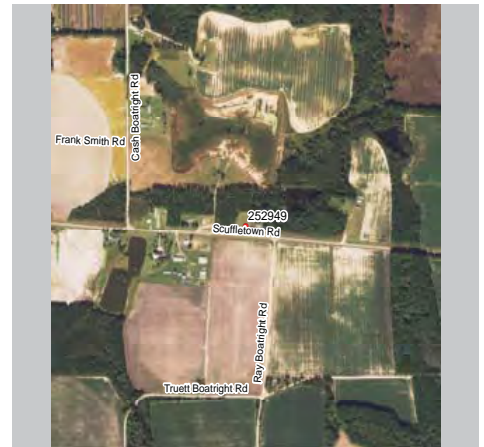
Burial Description -3 CSA
 -10 wooden headstones

Cemetery Description -outlined family plots
 -few unmarked graves
 -Active use
 -wooded surroundings



Bacon County Historic Resource

Field ID: BC-79
GNAHRGIS ID: 252949
County: Bacon
Preliminary NR Assessment: Does Not Meet



The Jesus Church Cemetery
1568 Scuffletown Hwy

Coordinates: 31.53481, -82.24989



Resource Type Site

Resource Use Funerary: Cemetery

Date of Construction c.1967

Common Names Previs, Boatright

≈ Number of Burials 50

Oldest Burial c. 1967

Burial Description -mostly new graves

Cemetery Description -outlined family plots
-Active use



Bacon County Historic Resource

Field ID: BC-80
GNAHRGIS ID: 252950
County: Bacon
Preliminary NR Assessment: May Meet



West of Bulldog Road-T.J. Smith Road
intersection

Coordinates: 31.52053, -82.24325



Resource Type Building

Resource Use Residential: Single Family Dwelling

Date of Construction c.1920

Building Type Bungalow: side gable

Structural System Balloon Frame

Style No Academic Style

Roof Gable:Front

Exterior Cladding Synthetics: Masonite

Foundation Unknown

Porch Verandah

Windows Double Hung Sash: 3/1 rectangular

Chimney Right side: exterior

Additional Notes -heavily obscured by vegetation
-several replacement windows



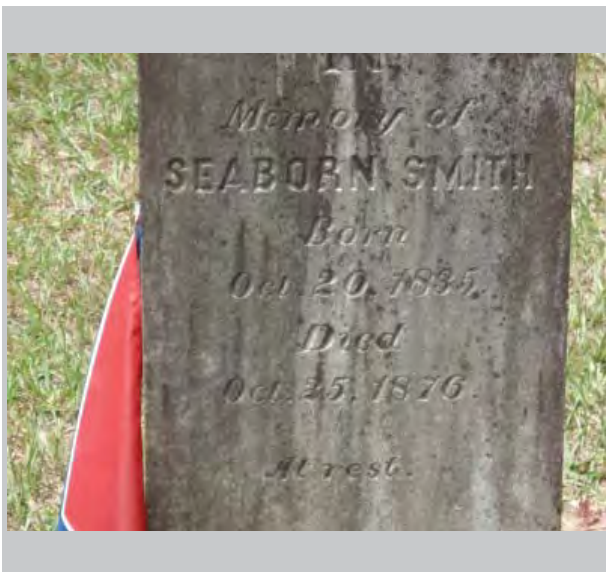
Bacon County Historic Resource

Field ID: BC-81
GNAHRGIS ID: 252951
County: Bacon
Preliminary NR Assessment: Does Not Meet



Antioch Cemetery
At Coffee Road-M D Tyre Road intersection

Coordinates: 31.52818, -82.29006



Resource Type Site

Resource Use Funerary: Cemetery

Date of Construction c.1870

Common Names Tyree and Padgett

≈ Number of Burials 60

Oldest Burial c.1876

Burial Description -several obelisks

Cemetery Description -outlined family plots
-Active use
-forest surroundings



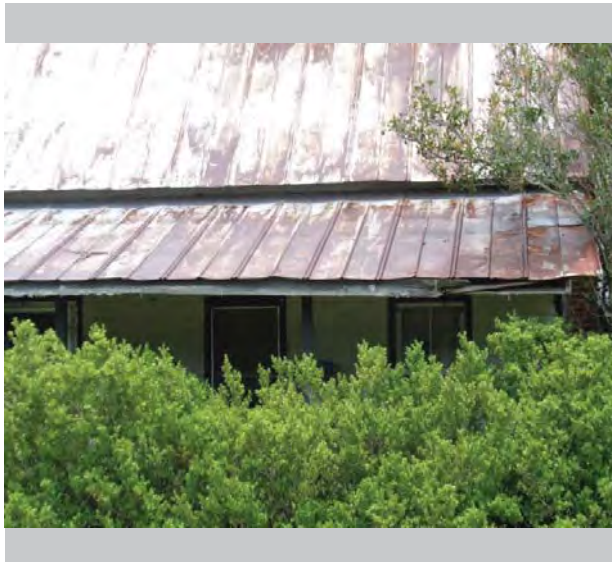
Bacon County Historic Resource

Field ID: BC-82
GNAHRGIS ID: 252952
County: Bacon
**Preliminary NR
Assessment:** May Meet



west of Scuffletown Hwy and
Damascus Church Rd Intersection

Coordinates: 31.53888, -82.29217



Resource Type Building

Resource Use Residential: Single Family Dwelling

Date of Construction c.1900

Building Type Plantation Plain

Structural System Balloon Frame

Style No Academic Style

Roof Gable:Side

Exterior Cladding Wood: Weatherboard

Foundation Unknown

Porch Verandah

Windows Double Hung Sash: 2/2 rectangular

Chimney Side - exterior

Additional Notes -2 chimneys
-in character back addition
-most windows original



Bacon County Historic Resource

Field ID: BC-83
GNAHRGIS ID: 252937
County: Bacon
Preliminary NR Assessment: Appears to Meet



At Falcon Road-Pikas Road
intersection

Coordinates: 31.542825, -82.301478

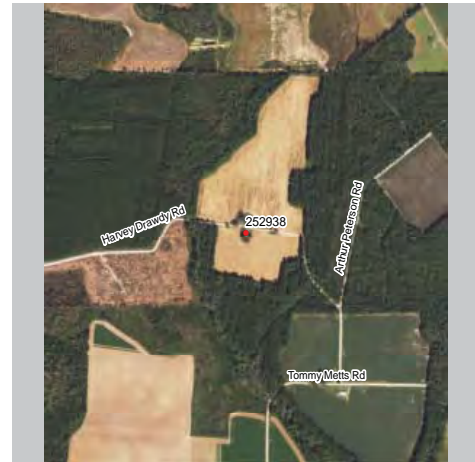


- Resource Type** Building
- Resource Use** Residential: Single Family Dwelling
- Date of Construction** c.1920
- Building Type** Georgian House
- Structural System** Balloon Frame
- Style** Colonial Revival
- Roof** Gable:Side
- Exterior Cladding** Wood: Weatherboard
- Foundation** Unknown
- Porch** Verandah
- Windows** Double Hung Sash: 6/6 rectangular
- Chimney** No chimney observed
- Additional Notes** -main wing 5 window bays across
-simple square wood columns

THE UNIVERSITY OF GEORGIA
COLLEGE OF ENVIRONMENT + DESIGN
CE+D

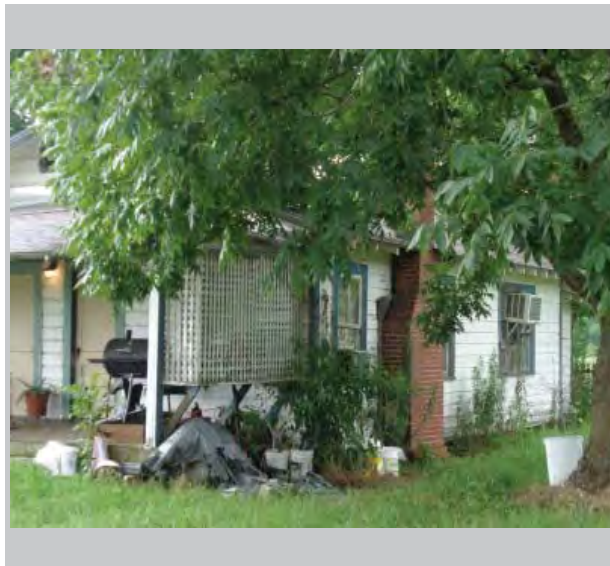
Bacon County Historic Resource

Field ID: BC-84
GNAHRGIS ID: 252938
County: Bacon
Preliminary NR Assessment: May Meet



West of Barnowl Blvd.-Greyhound
Road intersection

Coordinates: 31.55261, -82.29905



Resource Type Building

Resource Use Residential: Single Family Dwelling

Date of Construction c.1920

Building Type Bungalow: front gable

Structural System Balloon Frame

Style No academic style

Roof Gable:Front

Exterior Cladding Wood: Weatherboard

Foundation Brick: Pier

Porch Verandah

Windows Double Hung Sash: 2/2 rectangular

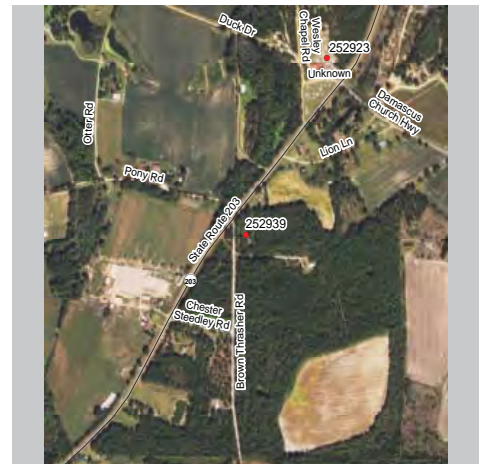
Chimney Lateral: Exterior

Additional Notes -vent in front gable
 -exposed rafter tails
 -newer weatherboards



Bacon County Historic Resource

Field ID: BC-85
GNAHRGIS ID: 252939
County: Bacon
Preliminary NR Assessment: May Meet



At Brown Thrasher Road-Highway 203
intersection

Coordinates: 31.57614, -82.32713



- Resource Type** Building
- Resource Use** Residential: Single Family Dwelling
- Date of Construction** c.1970
- Building Type** Linear Ranch
- Structural System** Balloon Frame
- Style** No academic style
- Roof** Gable:Side
- Exterior Cladding** Brick: Veneer
- Foundation** Unknown
- Porch** Verandah
- Windows** Double Hung Sash: 6/6 rectangular
- Chimney** No chimney Observed
- Additional Notes** -tan brick exterior
-integrated carport on the right side



Bacon County Historic Resource

Field ID: BC-86
GNAHRGIS ID: 252940
County: Bacon
Preliminary NR Assessment: May Meet



607 Radio Station Road

Coordinates: 31.52753, -82.45541



Resource Type Building

Resource Use Residential: Single Family Dwelling

Date of Construction c.1970

Building Type Linear Ranch

Structural System Balloon Frame

Style No academic style

Roof Gable:Side

Exterior Cladding Brick: Veneer

Foundation Unknown

Porch Verandah

Windows Double Hung Sash: 2/2 rectangular

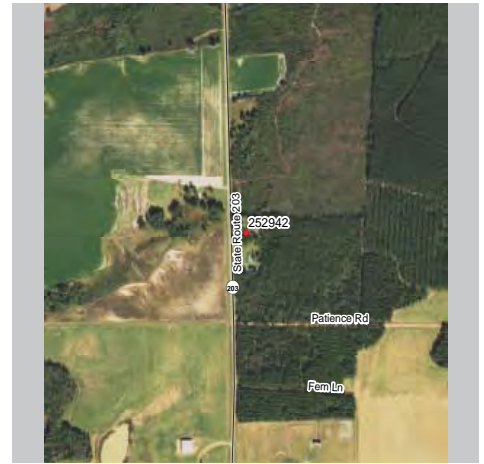
Chimney No chimney Observed

Additional Notes -windows have horizontal muttons
-chicago window in the porch



Bacon County Historic Resource

Field ID: BC-87
GNAHRGIS ID: 252942
County: Bacon
Preliminary NR Assessment: May Meet



544 Georgia Highway 203

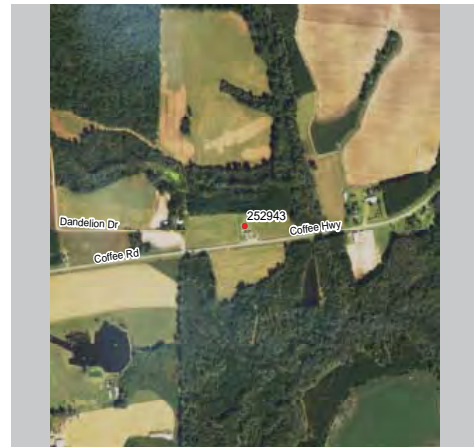
Coordinates: 31.50865, -82.36270



- Resource Type** Building
- Resource Use** Residential: Single Family Dwelling
- Date of Construction** c.1970
- Building Type** Linear Ranch
- Structural System** Balloon Frame
- Style** No academic style
- Roof** Gable:Side
- Exterior Cladding** Brick: Veneer
- Foundation** Unknown
- Porch** Stoop
- Windows** Vertical Jalousie
- Chimney** No chimney Observed
- Additional Notes** -ironwork porch supports
-3 vertical sets of jalousie windows
-double attached carport

THE UNIVERSITY OF GEORGIA
CE+D COLLEGE OF ENVIRONMENT + DESIGN
Bacon County
Historic Resource

Field ID: BC-88
GNAHRGIS ID: 252943
County: Bacon
Preliminary NR Assessment: May Meet



Friendship Church Cemetery
 401-499 Coffee Road

Coordinates: 31.48695, -82.34240



Resource Type Site

Resource Use Funerary: Cemetery

Date of Construction c.1900

Common Names Tyree and Padgett

≈ Number of Burials 100

Oldest Burial c.1900

Burial Description -2 CSA
 -2 Obelisks

Cemetery Description -outlined family plots
 -Active use



Bacon County Historic Resource

Field ID: BC-89
GNAHRGIS ID: 252945
County: Bacon
Preliminary NR Assessment: May Meet



At Desert Road-Cassia Road
intersection

Coordinates: 31.46629, -82.33816



- Resource Type** Building
- Resource Use** Residential: Single Family Dwelling
- Date of Construction** c.1930
- Building Type** Bungalow: side gable
- Structural System** Balloon Frame
- Style** No academic style
- Roof** Gable:Cross
- Exterior Cladding** Synthetics: Asbestos
- Foundation** Concrete: continuous
- Porch** Verandah
- Windows** Double hung sash, 4/4, rectangular
- Chimney** No chimney Observed
- Additional Notes** -some windows are screened or replaced
-vent in the front gable
-rafter tails are exposed

THE UNIVERSITY OF GEORGIA
CE+D COLLEGE OF ENVIRONMENT + DESIGN
Bacon County
Historic Resource

Field ID: BC-90
GNAHRGIS ID: 252946
County: Bacon
Preliminary NR Assessment: Does Not Meet



Ten Mile Creek Cemetery
 115 Ten Mile Church Road

Coordinates: 31.48469, -82.36081



Resource Type Site

Resource Use Funerary: Cemetery

Date of Construction c.1870

Common Names Tyree and Padgett

≈ Number of Burials 100

Oldest Burial c.1870

Burial Description
 -4 CSA
 -3 Obelisks
 -hand-etched stones

Cemetery Description
 -outlined family plots
 -Active use
 -there is a child section
 -older section is up on a hill



Bacon County Historic Resource

Field ID: BC-91
GNAHRGIS ID: 252947
County: Bacon
Preliminary NR Assessment: May Meet



East of Pinecone Road-Pinegrove
Road intersection

Coordinates: 31.497219, -82.491718



Resource Type Building

Resource Use Domestic: Single Dwelling

Date of Construction c. 1910

Building Type Central Hallway Cottage

Structural System Balloon/Platform Frame

Style No Academic Style

Roof Gable: Cross

Exterior Cladding Wood: Clapboard

Foundation Brick: Pier

Porch Verandah

Windows Double hung sash, 2/2,
rectangular

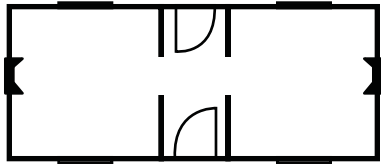
Chimney Side - exterior: Brick

Additional Notes -roof has fishscale shingles
that are falling in
-vents in the 2 front
gables

Bibliography

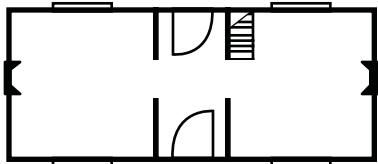
- <>. “Georgia Historic Resources Survey Manual,” Atlanta: Georgia Department of Natural Resources, Historic Preservation Division, 2000.
- <>. Georgia’s Living Places: Historic Houses in their Landscaped Setting (1991), http://georgiashpo.org/sites/uploads/hpd/pdf/NR15arch_20080521100904_optimized.pdf (accessed August 01, 2014).
- <>. “How to Apply the National Register Criteria for Evaluation: National Register Bulletin 15,” (Washington, D.C. : U.S. Government Printing Office, Department of the Interior, National Park Service, 1997.) <http://www.nps.gov/nr/publications/bulletins/pdfs/nrb15.pdf>
- Anderson Cordova, Karen and Burns, Leigh. Preservation Primer: A Resource Guide for Georgia. Atlanta: Georgia Department of Natural Resources, HPD, 2011.
- Ching, Frank. A Visual Dictionary of Architecture, New York : Van Nostrand Reinhold, 1995.
- Clouse, Richard. The Ranch House in Georgia: Guidelines for Evaluation Historic Preservation Division; available at [Http://issuu.com/georgiashpo/docs/ranch_house_guidelines?mode=window&background Color=%23222222](Http://issuu.com/georgiashpo/docs/ranch_house_guidelines?mode=window&background%20Color=%23222222) (Accessed August 12,2015).
- Derry, Anne, Jandal, H. Ward, Shull, Carol D., and Thorman, Jan. “Guidelines for Local Surveys: A Basis for Preservation Planning. National Register Bulletin 24,” Washington, D.C: U.S. Government Printing Office, Department of the Interior, National Park Service, 1985.) <http://www.nps.gov/nr/publications/bulletins/pdfs/nrb24.pdf>
- Lambin, Jeanne. “Preserving Resources from the Recent Past,” Washington, D.C.: National Trust for Historic Preservation, 2007
- Lenz, Richard J. “Sandersville. Museum of Washington County, The Brown House,” The Civil War in Georgia: An Illustrated Travelers Guide, http://www.sherpaguides.com/georgia/civil_war/mid_ga_east/sandersville_area.html) accessed January 12, 2015).
- McAlaster, Virginia and Lee. A Field Guide to American Houses, New York: Alfred A, Knopf, Inc, 2003.

Residential Building Types in Georgia



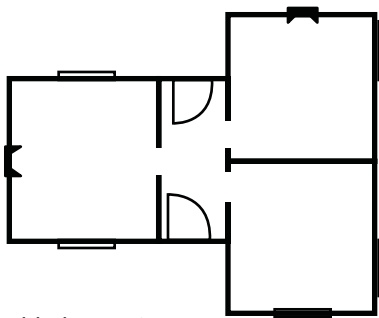
Central Hallway

Single-story: One room deep by two wide with central hallway



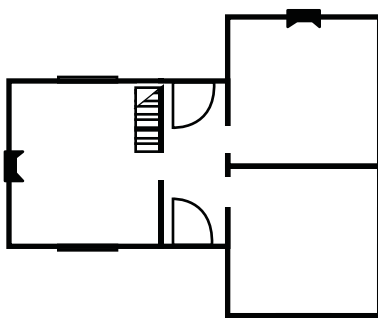
I-House

Multi-story: One room deep by two wide with central hallway



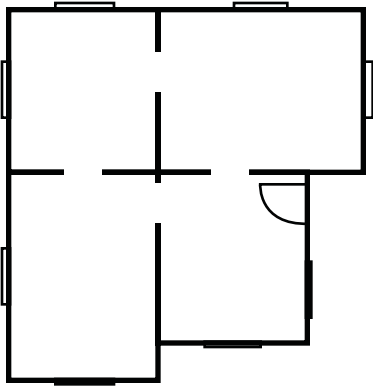
Gabled Wing Cottage

Single-story: Asymmetrical massing with central hallway



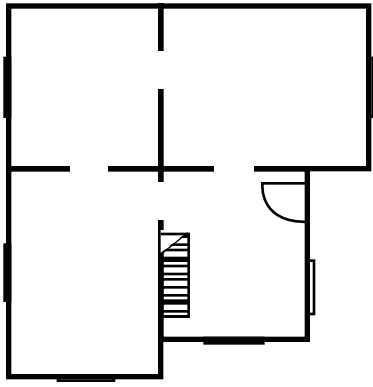
Gabled Wing House

Multi-story: Asymmetrical massing with central hallway



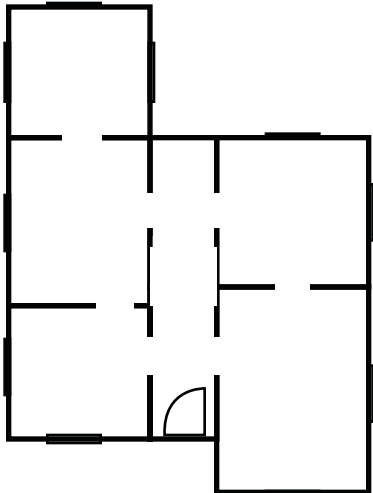
Queen Anne Cottage

Single story: Asymmetrical massing with no central hallway



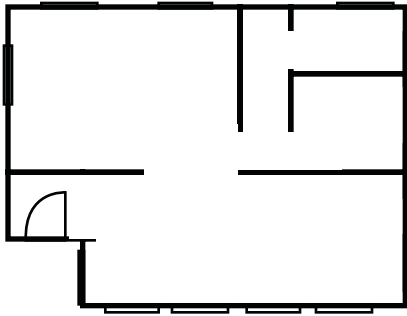
Queen Anne House

Multi-story: Asymmetrical massing with no central hallway



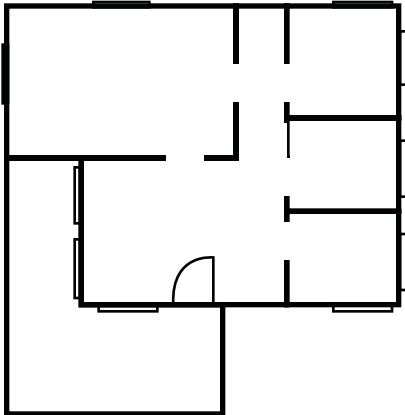
New South Cottage

Single story : Asymmetrical massing with central hallway



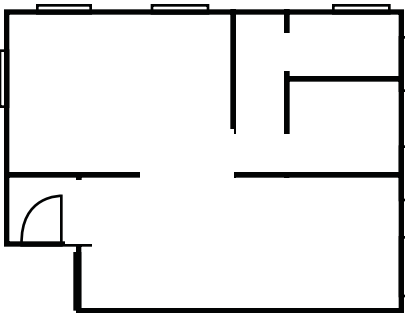
Bungalow (Front Gabled)

Single story: Irregular floor plans; one of four subtypes identified by a front gable roof shape



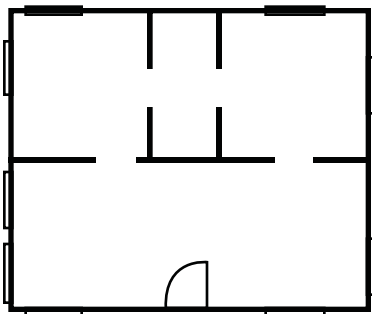
Bungalow (Cross Gabled)

Single story : Irregular floor plans; one of four subtypes identified by a cross gable roof shape



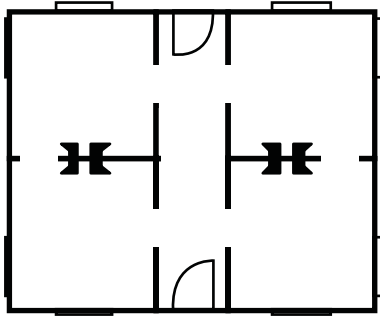
Bungalow (Hipped)

Single story: Irregular floor plans; one of four subtypes identified by a hipped roof shape



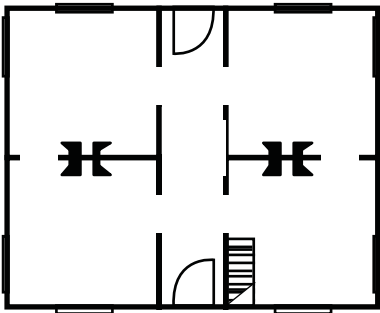
Bungalow (Side Gabled)

Single story: Irregular floor plans; one of four subtypes identified by a side gable roof shape



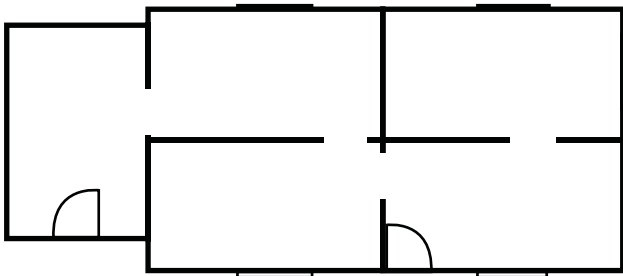
Georgian Cottage

Single story: Two rooms deep by two rooms wide with central hallway



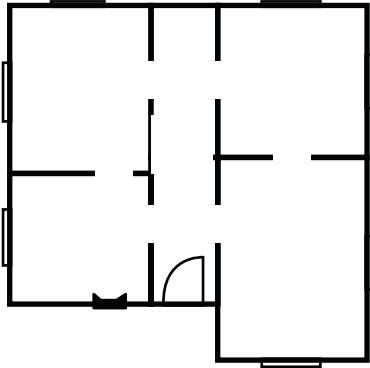
Georgian House

Multi-story: Two rooms deep by two rooms wide with central hallway



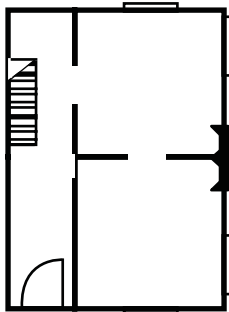
Side-Gabled Cottage

Single story: Tightly massed rooms with side projecting gables



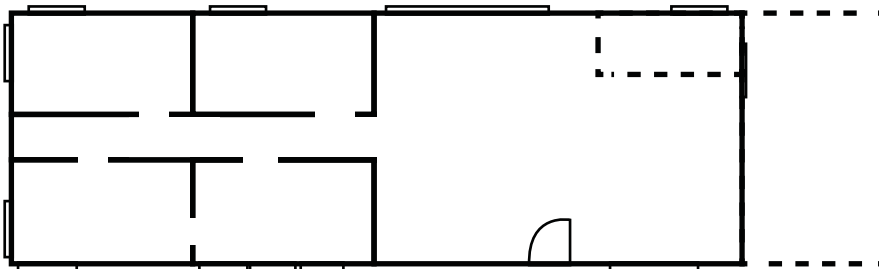
English Cottage

Single story: Irregular room placement with pronounced gable entry and chimney



Side Hallway

Multi-story: Two rooms deep by one wide with side hallway



Ranch House

Single story: Multiple rooms wide by two rooms deep; few hallways with interior zoning

Architectural Styles in Georgia: An Overview

The architecture of a house, its overall form and ornamentation, is classified as a style. Style is the decoration or ornamentation that has been put on a house in a systematic pattern or arrangement. Style has long been an important tool for describing, analyzing, and evaluating historic buildings; a style often reflects the needs and tastes of a particular time and a place in which it appears. Styles used during a particular time and in a particular location may contribute to an understanding of the culture of that period.



Adapted from *Georgia's Living Places: Historic Houses in the Landscaped Settings*,
hpd/pdf/NR15arch_20080521100904_optimized.pdf.

(1991), <http://georgiashpo.org/sites/uploads/>

Folk Victorian 1870-1920

Folk Victorian houses were built across Georgia in very large numbers. They were simple house forms, or house types, with Victorian-era decorative detailing such as jigsaw woodworks including brackets, spindlework and gingerbread trim. This detailing generally was taken from the elaborate styles, such as Queen Anne or Italianate, that were popular during the mid to late 19th century. Features were borrowed and added onto such places as porches and roof gables. This provided some hint of stylistic detailing on what was otherwise an unadorned traditional house form. This style is actually more a way of decorating a house than a precise stylistic category; however, the Folk Victorian house is so widespread that it demands a name.



Colonial Revival 1890-1955

Most Colonial Revival houses are symmetrical. A central entranceway is elaborated with a pediment supported by pilasters or columns. The use of broken pediments, fanlights and sidelights is common. Classical cornices with dentils or modillions are usually present. These features tend to be larger than original colonial details. The roof may be hipped or side-gabled with dormers. Windows have double-hung sashes, usually with six-over-six or nine-over-nine panes and may be paired. Walls are of masonry, masonry-veneer or wood.



English Vernacular Revival 1900-1940

Characteristics of English Vernacular Revival houses are a steeply pitched gabled roof with dominant front-facing gable and decorative half-timbering in the gables. Almost all have masonry walls. Most are masonry-veneered, a recently developed technique for applying a thin layer of masonry to a wall. Some houses have patterned brickwork, while others may be completely stuccoed. Often a variety of materials are used, such as brick walls with stone trim, wood half-timbering, and stuccoed gables. Massive masonry chimneys with decorative tops are common. Windows are generally tall and narrow, grouped together, multi-paned, and casements rather than double-hung. Some openings, particularly the entrance, may be emphasized by a round arch. Houses of this style are generally asymmetrical.



Craftsman 1910-1930

The Craftsman house uses a wide variety of materials both for its structure and decorative detailing. It has a low-pitched roof that is usually gabled but may also be hipped, giving a generally horizontal effect. The widely overhanging eaves are open with exposed rafters. Large gables have decorative brackets or braces at the eaves and may be covered with half-timbering. Roof dormers are sometimes found. Walls are most often wood but may also be covered with shingles or a masonry veneer of stone or brick. Porches have short square columns set on heavy masonry piers extending to the ground. Windows may have a multi-paned sash over a large one-pane sash. Craftsman houses are most often asymmetrical with a generally open and functional plan.



Gothic Revival 1850-1890

Gothic Revival houses typically have steeply pitched gabled roofs with both front-and side-facing gables. Decoratively sawn bargeboards are commonly found along the eaves. Window and door openings often have either pointed arched tops or heavily molded or pointed hoods. Porches are usually supported by slender posts with sawn woodwork forming flattened arches or brackets. Some houses have vertical board-and-batten siding. This style emphasized picturesqueness, verticality, and varied use of materials.



Greek Revival 1825-1860

The Greek Revival style is characterized by details such as prominent columns, pilasters, and wide plain entablatures that encircle a house. Proportions are large and heavy. A symmetrical, rectangular block has a symmetrical front facade with a central entrance. An elaborate door surround contains a rectangular transom, sidelights and pilasters. A typical expression of the Greek Revival in Georgia is a low-pitched, hipped roof supported by columns to form a full-width porch. Porticoes with triangular pediments are also found. Vernacular interpretations with simplified details, such as square rather than round columns, are common. Double-hung windows generally have six-over-six panes.





Neoclassical Revival 1895-1940

The most common feature of the Neoclassical Revival style is a dominant full-height front portico with classical columns. The portico may be at the entry or may cover the full facade; it may have a triangular pediment or be part of the overall roof. A full-height entry portico is often coupled with a one-story full-facade porch. The facade is more or less symmetrical, and the central entrance, surrounded with pilasters and columns, is elaborated with fanlights, sidelights, and transoms. There is almost always a classical cornice with dentils or modillions. The roof is usually low-pitched and hipped and may have a balustrade. A porte-cochere and side porches supported by columns are common.



Italianate 1840-1885

Italianate houses are generally asymmetrical with an L-shaped or other irregularly shaped plan and gabled roof. Distinguishing features are the widely overhanging eaves with decorative brackets that emphasize the cornice. Typically tall narrow windows with large two-over-two or one-over-one panes are often paired, arched, and topped with elaborate hoods. Bay windows are also common. Italianate style residential architecture faded out during the 1880s; however, many Italianate style commercial blocks were constructed until the 1890s. The flat topped blocks with brackets and decorative window moldings were two or more stories tall and featured large storefront windows. Brackets beneath eaves are the most distinguishing characteristic of the Italianate commercial block.



Mediterranean Revival 1890-1910

A Mediterranean Revival house has smooth stuccoed or masonry walls and is usually asymmetrical. The roof is covered with clay tile, is low-pitched, and may be either hipped or gabled. Houses following the Spanish tradition will have little or no eave overhang, while those following the Italian influence will have widely overhanging eaves with exposed rafters. Recessed and arcaded loggias, or open porches, are common. Windows are generally arched and may be grouped together. Sometimes columns and pilasters are used to elaborate openings.



Queen Anne 1880-1915

A Queen Anne style house is asymmetrical with complex roof and wall shapes. It displays a variety of textures, materials, and detailing. The asymmetrical shape results from a floor plan that is open and flowing. The roof is often steeply pitched and hipped with both front-and side-facing, or cross, gables. Wall surfaces avoid a smooth appearance through the use of projecting bays and materials such as patterned shingles that provide texture. The porch is usually asymmetrical and often wraps around two sides of the house. It is supported with slender turned posts and often decorated with sawn brackets and spindlework friezes. Roof gables may also be decorated with sawn ornamentation or spindlework and covered with patterned shingles. There are often prominent and elaborate brick chimneys with patterned and corbeled brickwork. A round or multi-sided tower may be found at a corner.



Spanish Colonial Revival 1900-1940

A Spanish Colonial Revival house has a clay tile roof that is usually gabled with little eave overhang. Walls are of smooth stucco. Arched openings and arcaded loggias, or open porches, are common. Windows are generally casement and grouped together. The roof may be elaborated with curvilinear gables or parapets from the mission tradition. Exposed roof beams may protrude from the walls to emphasize construction methods.





The University of Georgia
College of Environment and Design
Center for Community Design & Preservation
Historic Resources Survey Report
Bacon County, Georgia
2016