



# HOWE SCHOOL DESIGN CHARRETTE

OCTOBER 4-6, 2019



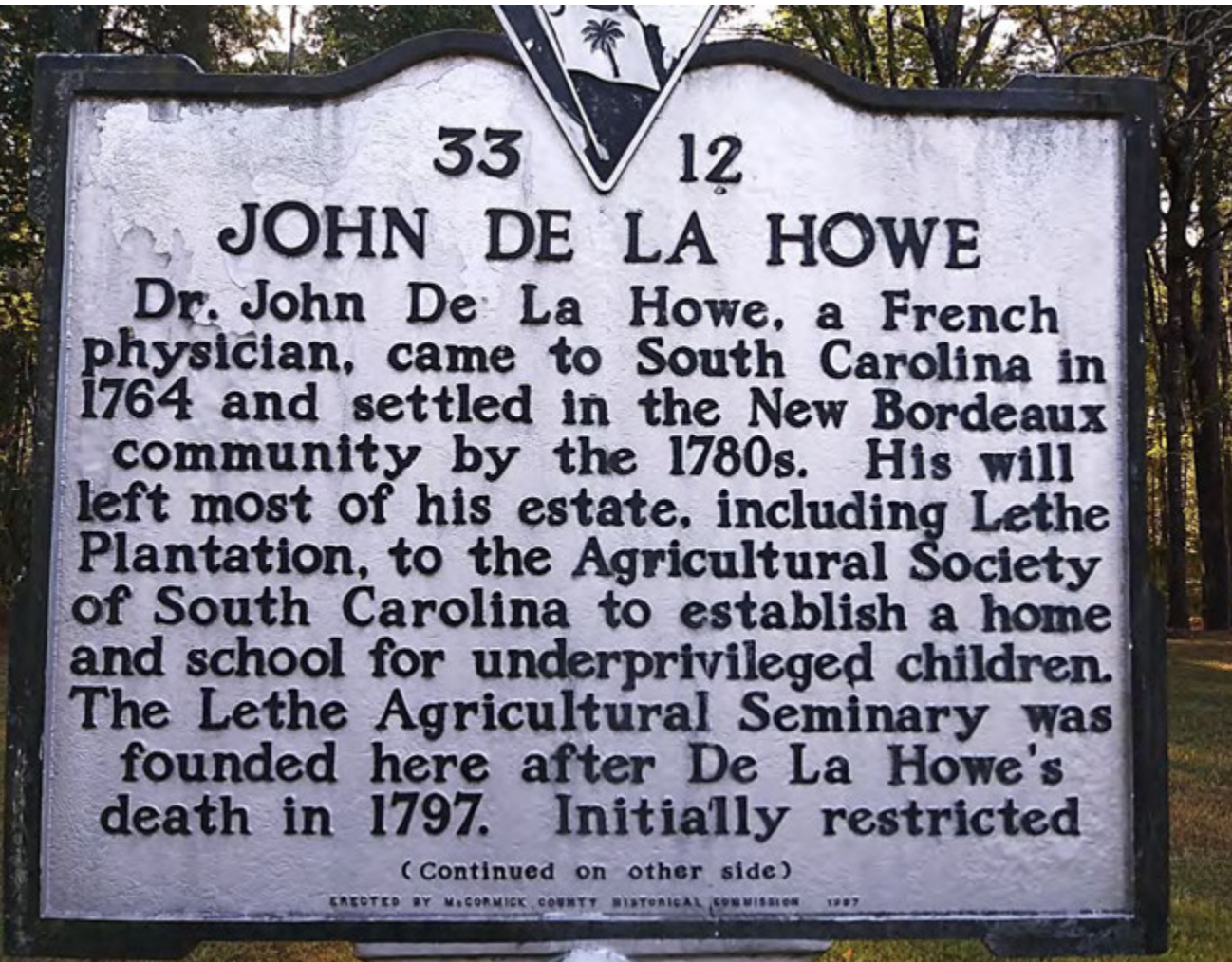
DE LA HOWE  
SCHOOL FOR AGRICULTURE



College of  
Environment + Design  
UNIVERSITY OF GEORGIA

In its **200-year history**, John de la Howe School has served at times as an agricultural seminary, a college preparatory school, a vocational school, and a facility for children in crisis. In 2018, the school closed to reinvent itself as the **South Carolina Governor's School for Agriculture**. While the school plans to re-open in August 2020 with 80 students, the ultimate challenge is to **expand the facilities over the next five years** to house 325 students and additional faculty, as well as take advantage of the property's natural and historic resources for the enjoyment and education of the public. In the span of a weekend, the UGA team met with the school's employees and alumni, conducted site analysis, and finally showcased proposed design plans intended to accommodate the school's growth while remaining sensitive to its historic context.

How can a historic school for orphans **evolve its campus** into a first-of-its-kind, residential high school for agricultural science?



John de la Howe School was willed to the state by its namesake in 1797 for the development of a school for orphaned boys and girls to learn manual labor trade skills.



*Former Administration Building*

The school has served at times as an agricultural seminary, a college preparatory school, a vocational school, and a facility for children in crisis.



*Current Administration Building*

In 2018, the school closed to reinvent itself as the **South Carolina Governor's School for Agriculture** following the state's similar Governor's School models.

**SC Governor's School for Science & Mathematics**  
Hartsville, SC



**SC Governor's School for Arts & Humanities**  
Greenville, SC





# TRADITIONAL CAMPUS PLAN

The historic 1300-acre property on Lake Strom Thurmond (known on the Georgia side as *Clarks Hill Lake*) **includes...**

# Educational Buildings & Residential Cottages

**Administrative Building**



**Huguenot Cottage**



# Pastures & Elliptical Lawn





# Historic Dairy Barn Event Space



# 16-Unit Wilderness Camp



A photograph of a dense forest with tall, thin trees. The ground is covered in brown leaves and some green plants. In the background, a body of water is visible through the trees. The sky is blue with some white clouds. A semi-transparent white box is overlaid on the top part of the image, containing the text "Hundreds of Acres of Timber".

Hundreds of Acres of Timber

# CHALLENGES OVER THE NEXT FIVE YEARS

1. House **325 students** and additional faculty
2. Take advantage of the property's natural and historic resources for the **enjoyment & education of the public**



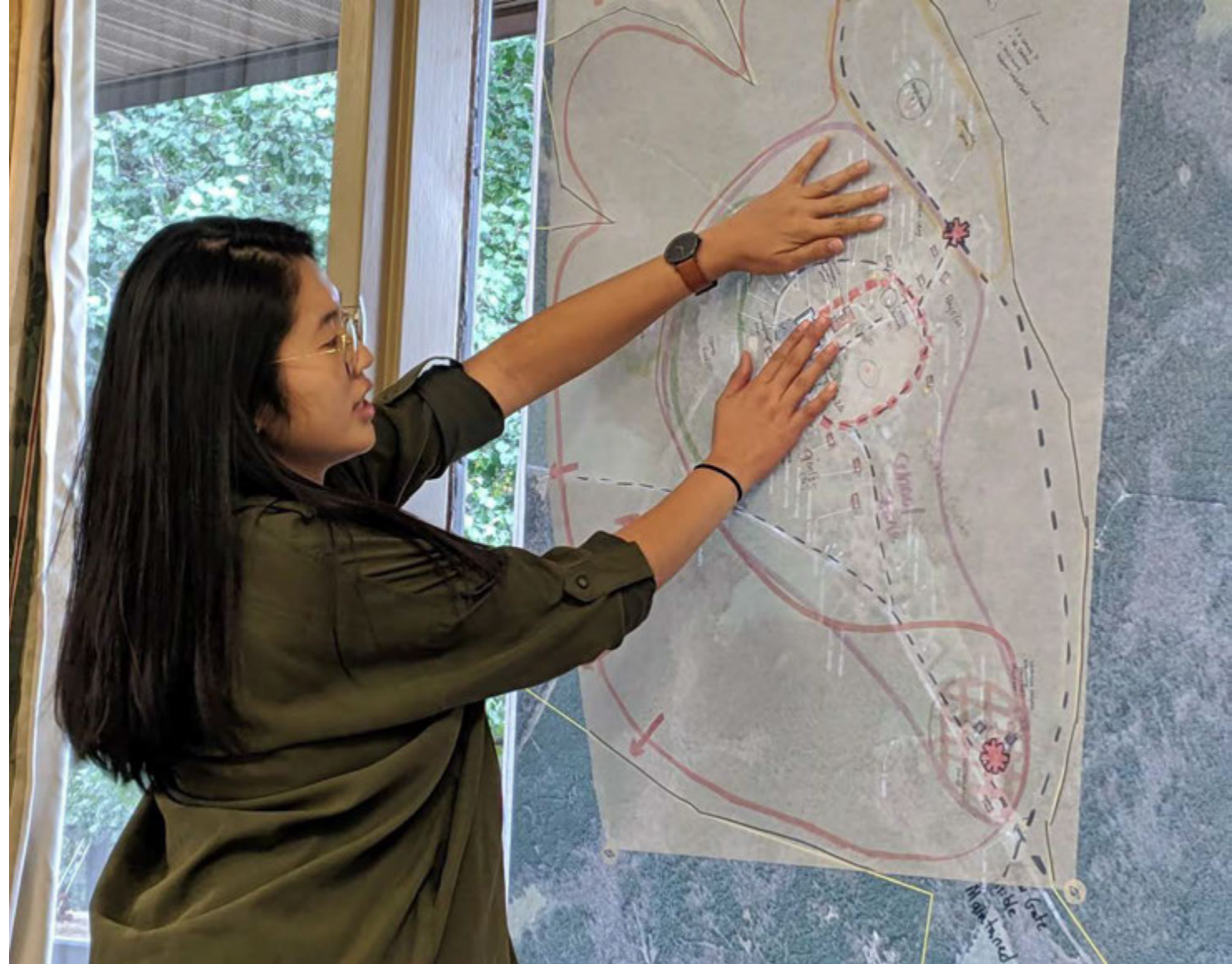


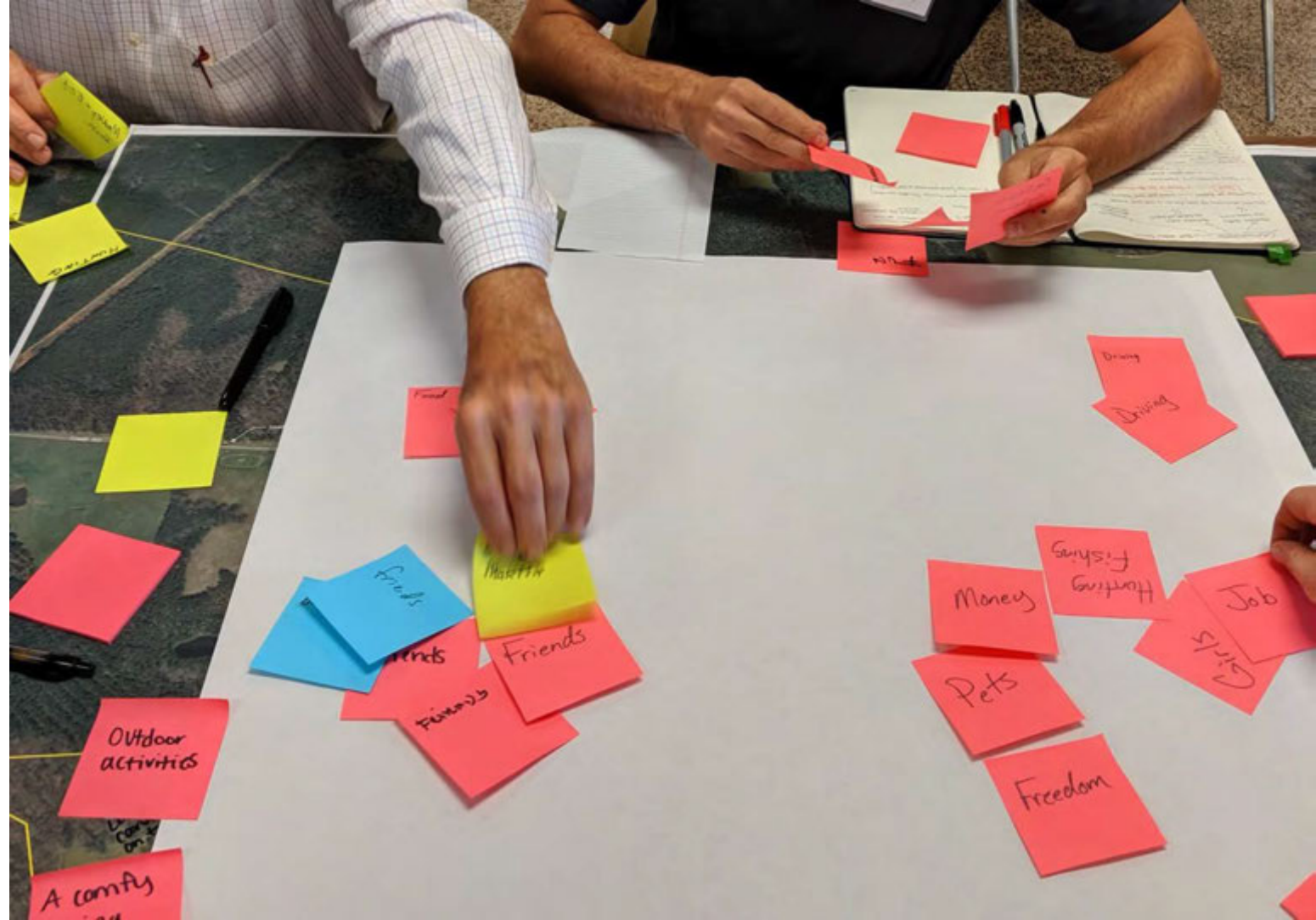
# DESIGN CHARRETTE

October 4-6, 2019

# “CHARRETTE”

Design charrettes are **multi-day, creative visioning sessions** in which a team of designers and local stakeholders focus on a particular problem and arrive at a **collaborative solution**.





The charrette began with **identifying significant sites** on the school campus. Then, participants were asked, **“What was important to you as a 15-year-old?”** in order to develop common themes:

**Social Life • Independence • Education • Recreation**

Then, the UGA team  
toured the property with  
leaders of the new  
school's...

- Agricultural operations
- Facilities division
- Educational programming





# DESIGN NEEDS

A hand-drawn site plan or conceptual map. The map features several irregularly shaped zones outlined in different colors: orange, green, pink, yellow, and blue. Labels on the map include 'FOREST - TRAIL' at the top, 'ENTRANCE' on the right, 'LAWN' in the center, 'PASTURE' below the lawn, 'SPORTS AND POND' at the bottom, and 'Dairy Barn' near the bottom center. There are also some faint labels like 'SALES HOUSE' and 'AND NEW DEVELOPMENT'. The map is overlaid with a grid of thin lines.

- Additional housing
- Parking
- New school buildings
- Updated entrance
- Dairy Barn expansion
- Lab space
- Recreation fields
- Greenhouses
- Demonstration plots
- Event venues
- Outdoor gathering spaces
- Walking trails



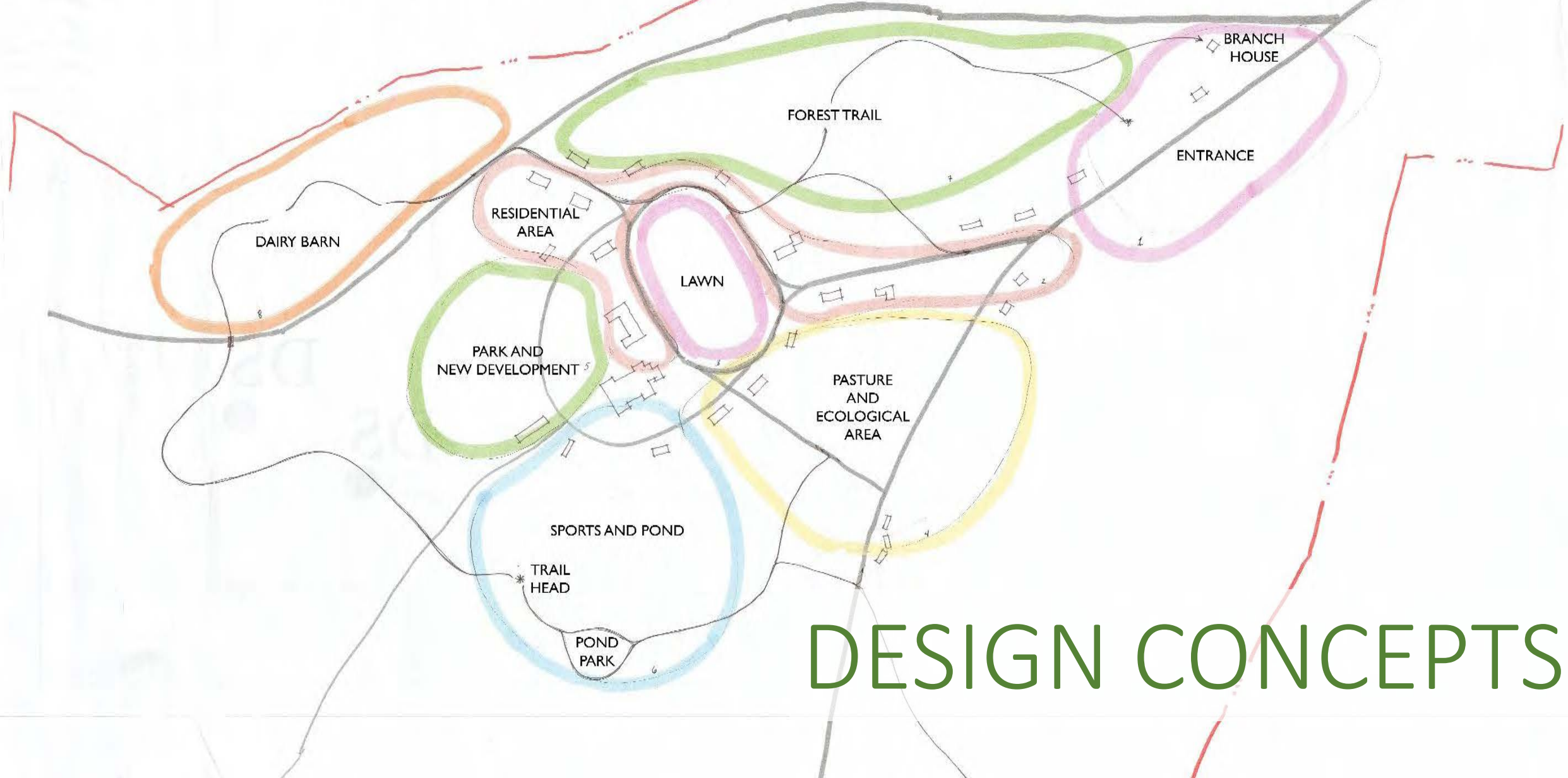
The weekend progressed with intense planning and drafting sessions, site exploration, analysis, and periodic feedback from stakeholders.

# ON SUNDAY AFTERNOON...

The charrette concluded with a **final showcase** of proposed design plans intended to accommodate the school's growth whilst remaining sensitive to its historic context.



# CAMPUS ZONES



# DESIGN CONCEPTS

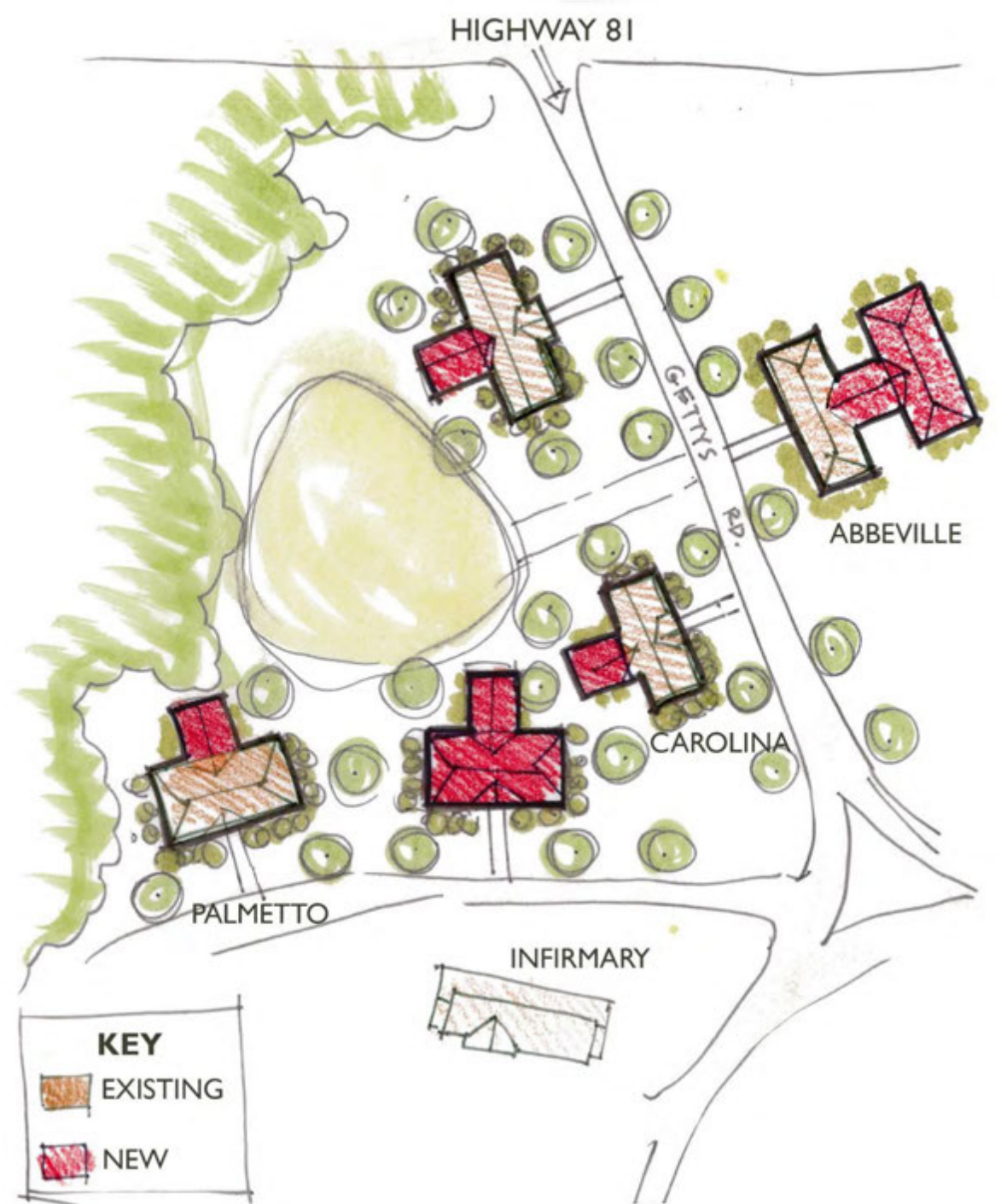
# ADDITIONAL HOUSING

with parking, outdoor gathering spaces, and walking trails

# COTTAGE ADDITIONS



As enrollment expands at John de la Howe School, the historic cottages can be **expanded in the rear** to house more students. **New cottages** can be placed between the existing cottages and constructed in a similar style.



# COTTAGE REAR EXPANSION



*Side View of Huguenot Cottage with Rear Addition*

## NEW COTTAGES & DUPLEXES

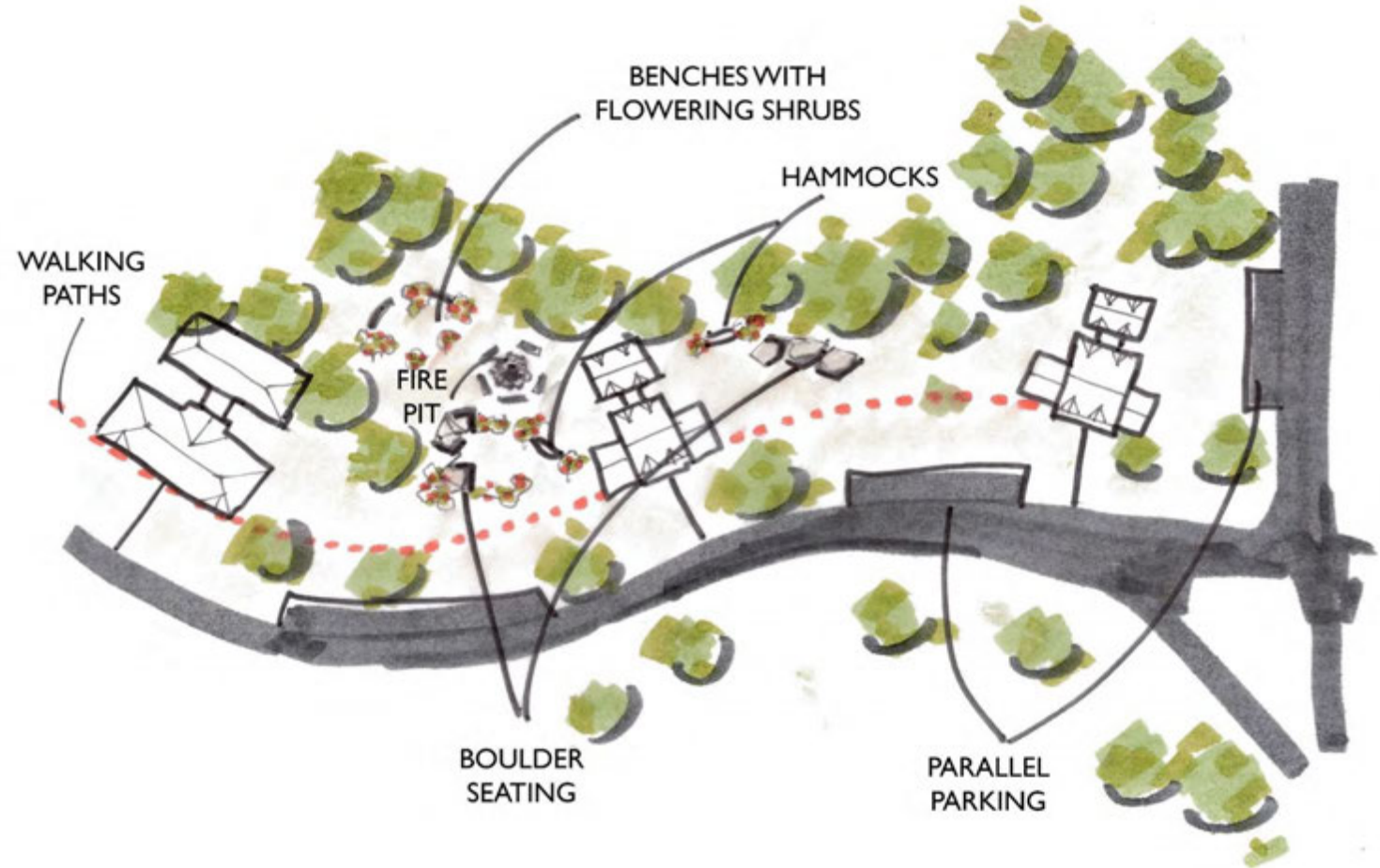
There is additional space for housing along **Gettys Road** and **Tomb Road**. The housing would **match in style** with the existing cottages and duplexes. **Parallel parking** could exist along Gettys Road.





## COTTAGE LANDSCAPES

Land between the cottages can be used to create **outdoor leisure spaces**. Some possible options are boulder seating, benches, fire pits, hammocks, and flowering shrubs. **Parallel parking** can be added between cottages alongside the street. **Walking paths** keep students out of the way of traffic.



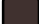


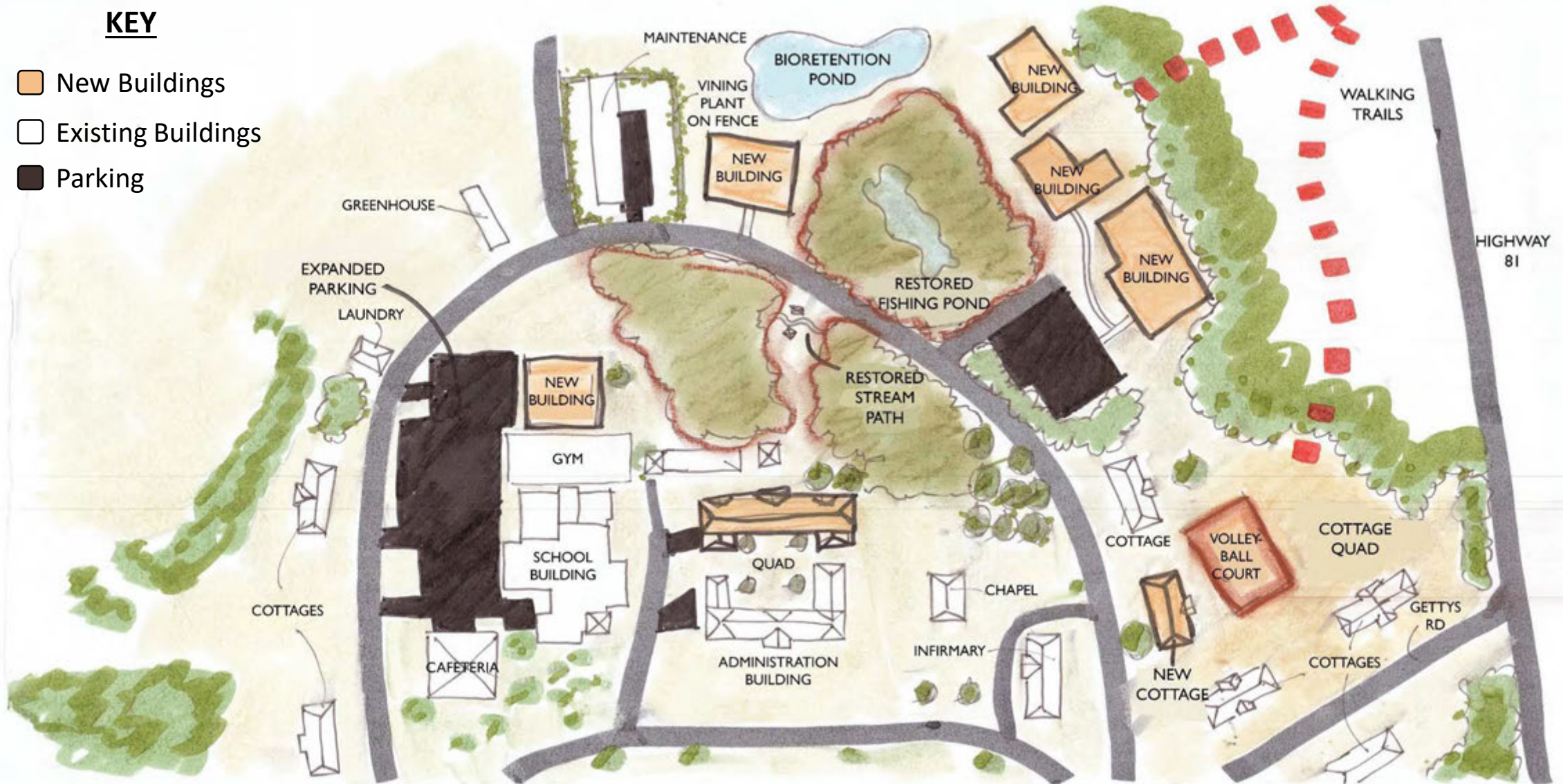
# NEW SCHOOL BUILDINGS

with parking, outdoor gathering spaces, lab space, and walking trails

# CONCEPTUAL MAP

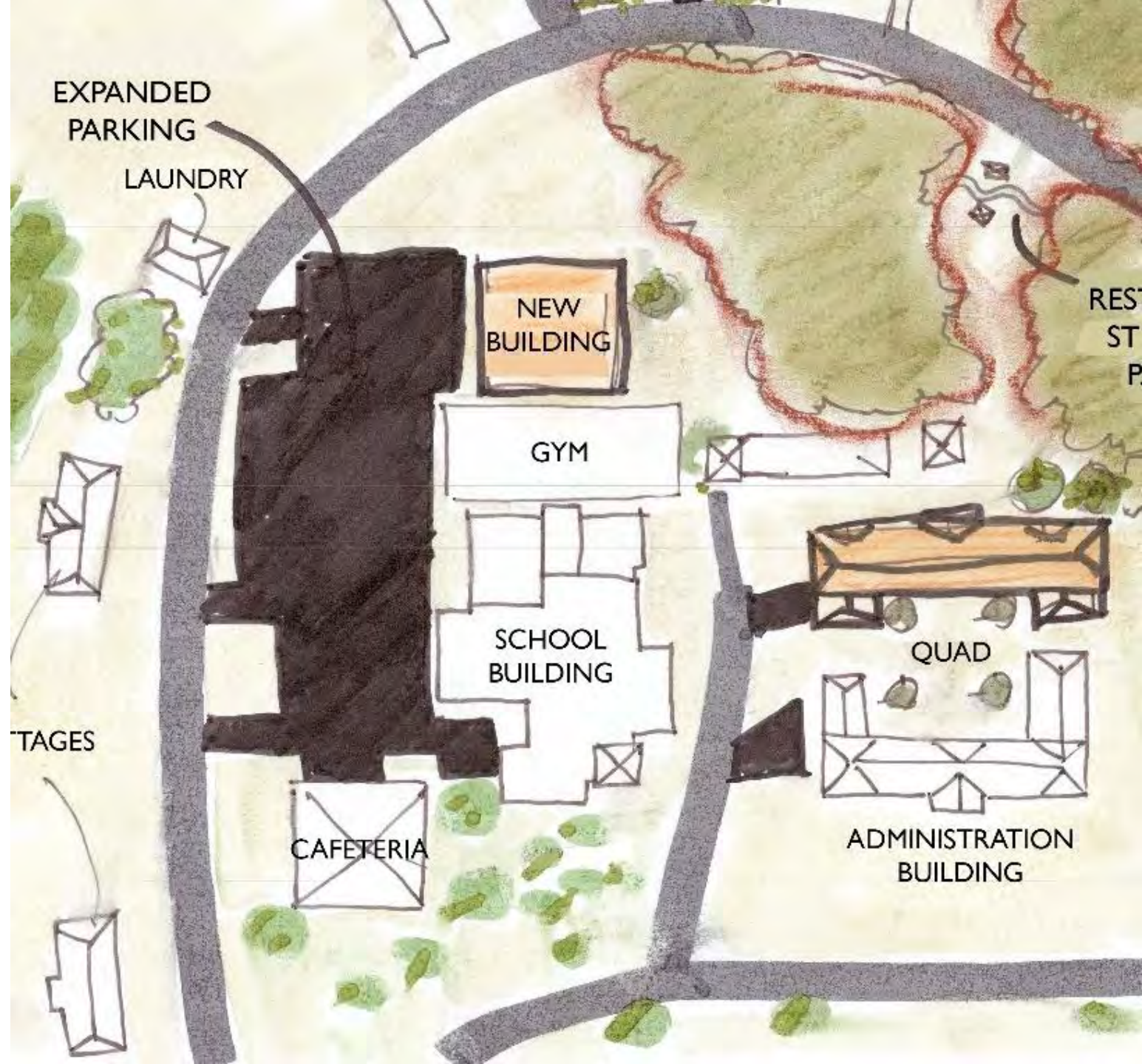
## KEY

-  New Buildings
-  Existing Buildings
-  Parking

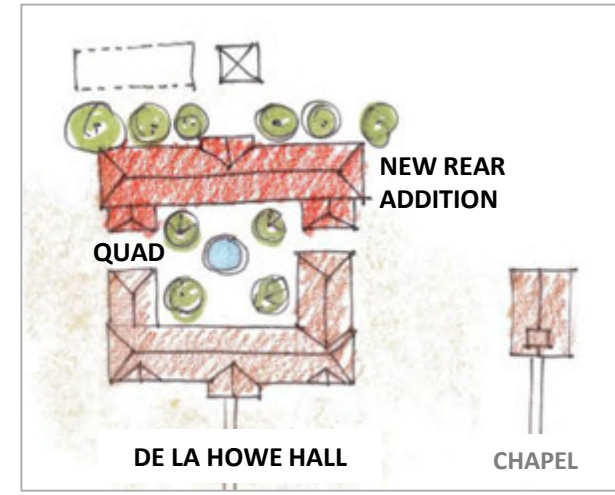


## CAMPUS INFILL

Removing the current tennis courts and outdoor pool makes room for an **expanded parking lot** beside the academic buildings. An **additional school building** can be added **behind the current gymnasium**, as **behind the current main school building** (creating an interior quad space.)



# COURTYARD QUAD & DORMITORY



*Current rear view*



*Proposed*



## NEW ACADEMIC AREA

**Additional academic buildings** can be added in the **cleared area across the street** from the current academic buildings. The park behind the school buildings can be spruced up and include the fishing pond across the street, **creating a connection between the existing and proposed academic areas**. An **additional parking lot** could sit between the new school buildings and the men's cottages.



# RESTORED PARK BEHIND SCHOOL

**Before**



**After**



# RECREATION FIELDS

with greenhouses, demonstration plots, outdoor gathering & lab space, and walking trails



# CONCEPTUAL MAP



## SPORTS COMPLEX & POND PARK

Students can use a restored **baseball field**, new **tennis courts**, or a **flexible field space** for team sports. Behind the sports complex is a proposed **park area with a large pond** (with potential for an **aquaculture lab**.)



## GREENHOUSES & TRIAL GARDEN

Along the main road, **additional greenhouses** can be added beside the existing one. An **outdoor trial garden** can also be placed beside/behind the greenhouses for research and for visitors.



# NEW GREENHOUSES & GARDEN



# UPDATED ENTRANCE

with demonstration plots, parking, and walking trails

# DEMONSTRATION GARDENS & PASTURE

Beyond the **Branch House** (museum and welcome center) and **entry security gate**, one to two **demonstration gardens** can be placed to the right, and a **demonstration pasture** to the left leading to the **barn structure**.

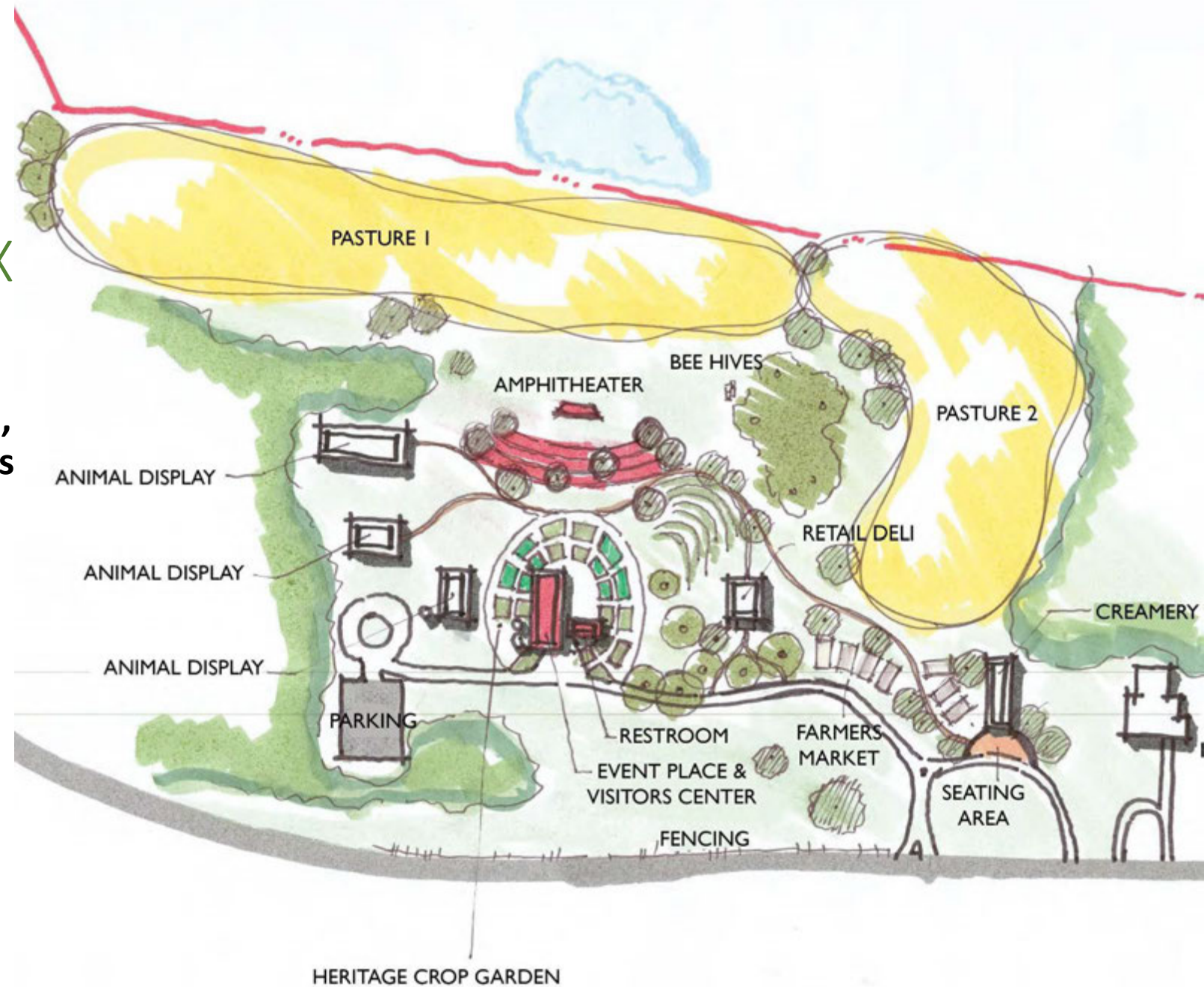


# DAIRY BARN EXPANSION

with event venues, parking, outdoor gathering spaces, and demonstration plots

## DAIRY BARN COMPLEX

The proposals around the dairy barn include a **creamery, farmers market, deli & gift shop, bee hives, amphitheater, event space, visitors center, animal display areas, crop display gardens, and pastures.**





# OVAL LAWN EVENT SPACE

with parking, outdoor gathering spaces, and walking trails

## OVAL LAWN

The oval lawn is mostly kept open to be used as an **event space**. A **plaza** is added across from the cafeteria to increase **outdoor seating** in the area. **Parking areas** are added to the downhill areas of the lawn.



**SPECIAL THANKS**  
**to JOHN de la HOWE SCHOOL**

Dr. Sharon Wall, Frank Dorn,  
Ken Durham, Gregory  
Thompson, Hugh Bland, and  
George McLain

**UGA CHARRETTE TEAM**

Jennifer Lewis, Brandon Platt,  
Dr. Barry Croom, Lu Flaherty,  
Felipe Barrantes, Deborah Kim,  
Ruohan Li, Saadia Rais



**Center for Community Design and Preservation**

*College of Environment + Design*

**UNIVERSITY OF GEORGIA**

[www.ced.uga.edu/psoc](http://www.ced.uga.edu/psoc)