



HOWE SCHOOL DESIGN CHARRETTE

OCTOBER 4-6, 2019



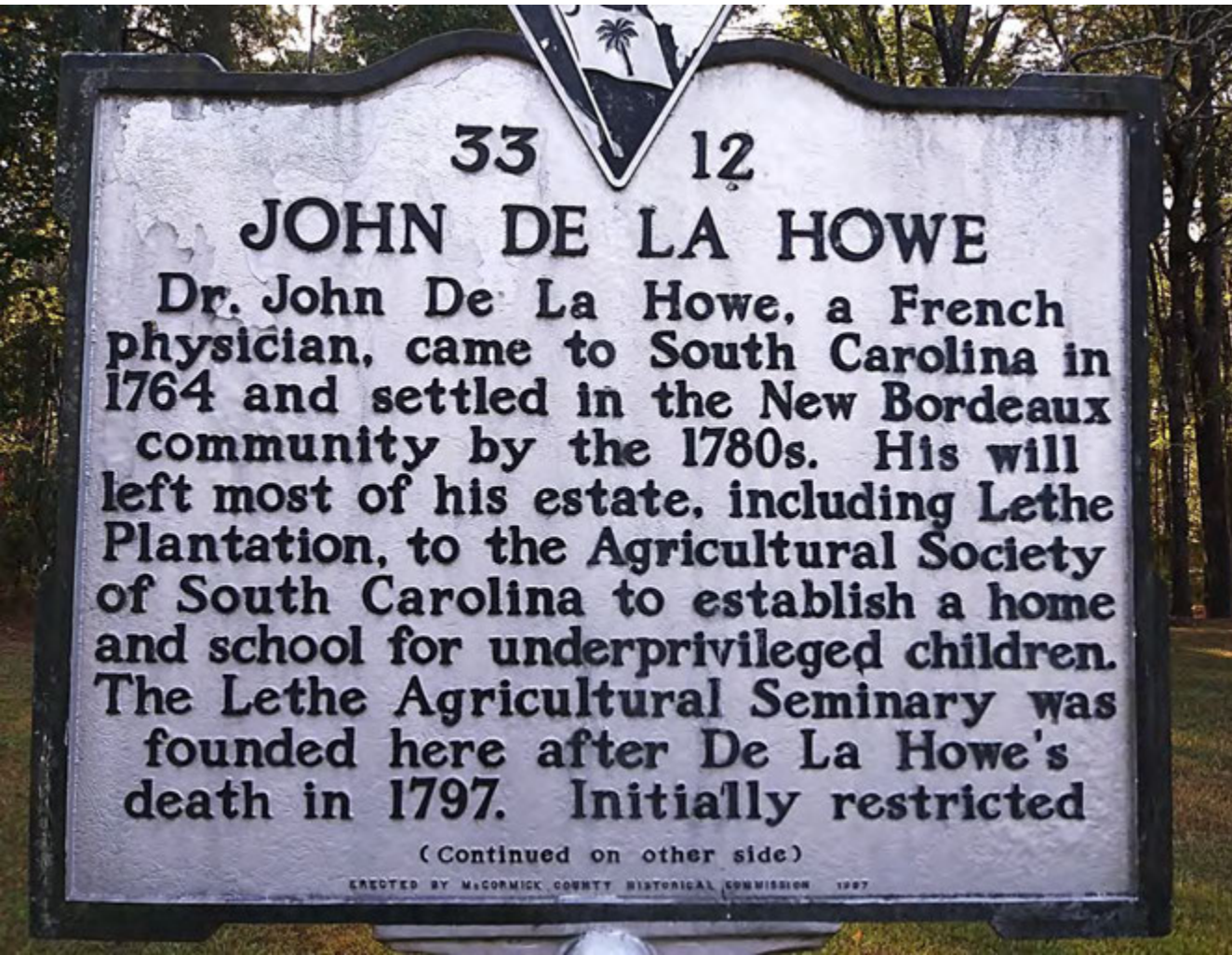
DE LA HOWE
SCHOOL FOR AGRICULTURE



College of
Environment + Design
UNIVERSITY OF GEORGIA

In its **200-year history**, John de la Howe School has served at times as an agricultural seminary, a college preparatory school, a vocational school, and a facility for children in crisis. In 2018, the school closed to reinvent itself as the **South Carolina Governor's School for Agriculture**. While the school plans to re-open in August 2020 with 80 students, the ultimate challenge is to **expand the facilities over the next five years** to house 325 students and additional faculty, as well as take advantage of the property's natural and historic resources for the enjoyment and education of the public. In the span of a weekend, the UGA team met with the school's employees and alumni, conducted site analysis, and finally showcased proposed design plans intended to accommodate the school's growth while remaining sensitive to its historic context.

How can a historic school for orphans **evolve its campus** into a first-of-its-kind, residential high school for agricultural science?



John de la Howe School was willed to the state by its namesake in 1797 for the development of a **school for orphaned boys and girls to learn manual labor trade skills.**



Former Administration Building

The school has served at times as an agricultural seminary, a college preparatory school, a vocational school, and a facility for children in crisis.



Current Administration Building

In 2018, the school closed to reinvent itself as the **South Carolina Governor's School for Agriculture** following the state's similar Governor's School models.

SC Governor's School for Science & Mathematics
Hartwell, SC



SC Governor's School for Arts & Humanities
Greenville, SC



An aerial photograph of a large, irregularly shaped lake with numerous forested islands and peninsulas. The water is a murky, yellowish-brown color. On the left side of the image, there is a small cluster of buildings and a road, which is the campus mentioned in the text. The surrounding land is mostly covered in dense, dark green forest.

TRADITIONAL CAMPUS PLAN

The historic 1300-acre property on Lake Strom Thurmond (known on the Georgia side as *Clarks Hill Lake*) **includes...**

Educational Buildings & Residential Cottages

Administrative Building



Huguenot Cottage



Pastures & Elliptical Lawn



Historic Dairy Barn Event Space



16-Unit Wilderness Camp



A photograph of a dense forest with many tall, slender trees. The ground is covered in brown leaves and some green plants. In the background, a body of water is visible through the trees. A semi-transparent white box with black text is overlaid on the top left of the image.

Hundreds of Acres of Timber

CHALLENGES OVER THE NEXT FIVE YEARS

1. House **325 students** and additional faculty
2. Take advantage of the property's natural and historic resources for the **enjoyment & education of the public**



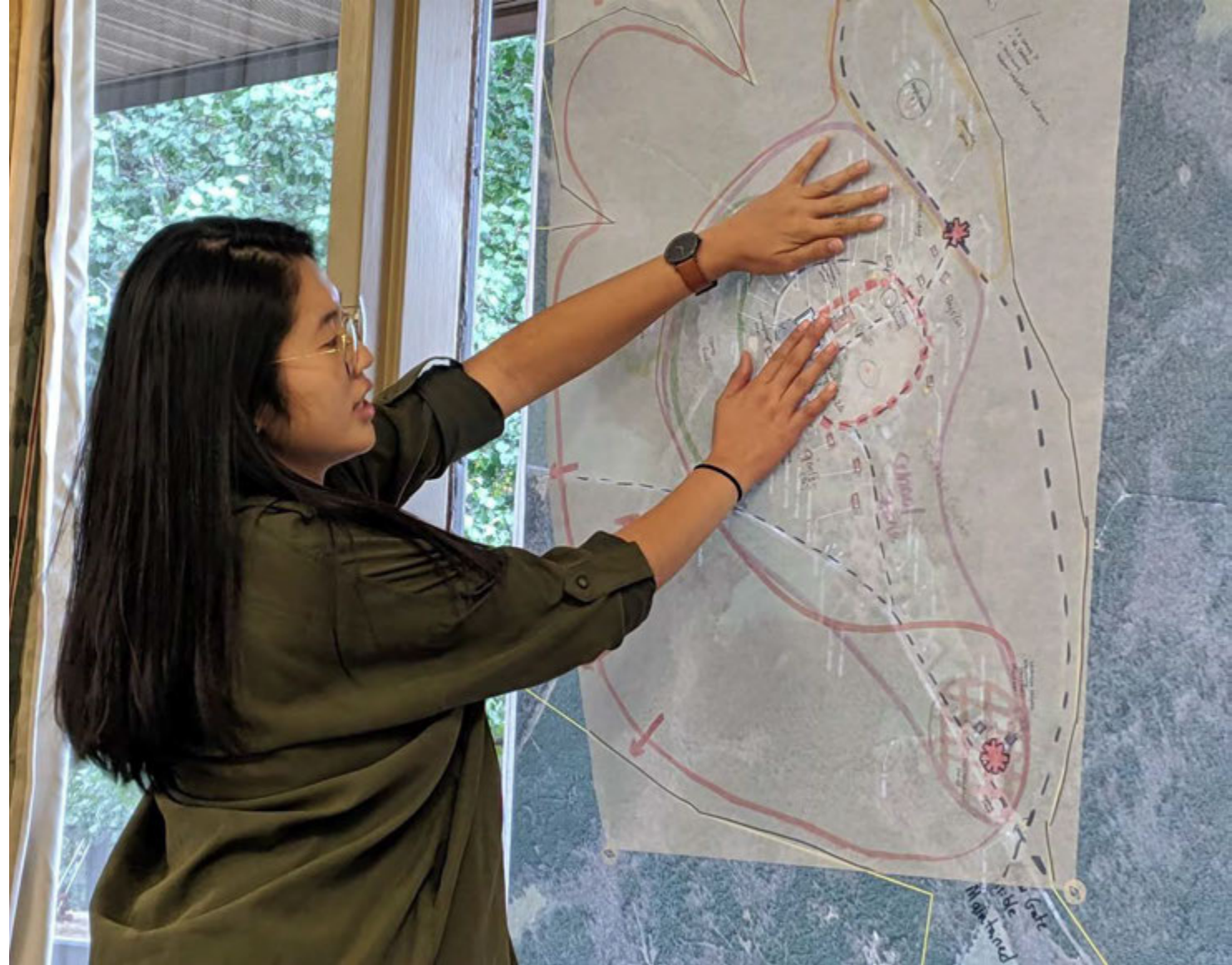


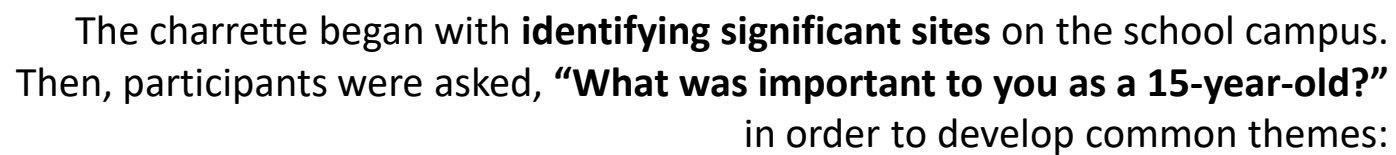
DESIGN CHARRETTE

October 4-6, 2019

“CHARRETTE”

Design charrettes are **multi-day, creative visioning sessions** in which a team of designers and local stakeholders focus on a particular problem and arrive at a **collaborative solution**.





Social Life • Independence • Education • Recreation

Then, the UGA team
toured the property with
leaders of the new
school's...

- Agricultural operations
- Facilities division
- Educational programming



DESIGN NEEDS

A hand-drawn site plan in pencil and colored markers (orange, green, pink, yellow, blue) serves as the background. It shows various zones: a central 'LAWN', a 'FOREST TRAIL' at the top, a 'PASTURE' area, a 'Dairy Barn' area on the left, and a 'POND' at the bottom. Other labels include 'ENTRANCE', 'GREENHOUSE', 'DEMONSTRATION PLOTS', 'EVENT VENUES', 'OUTDOOR GATHERING SPACES', and 'WALKING TRAILS'. The plan is divided into several colored regions, each corresponding to a design need listed in the foreground.

- Additional housing
- Parking
- New school buildings
- Updated entrance
- Dairy Barn expansion
- Lab space
- Recreation fields
- Greenhouses
- Demonstration plots
- Event venues
- Outdoor gathering spaces
- Walking trails



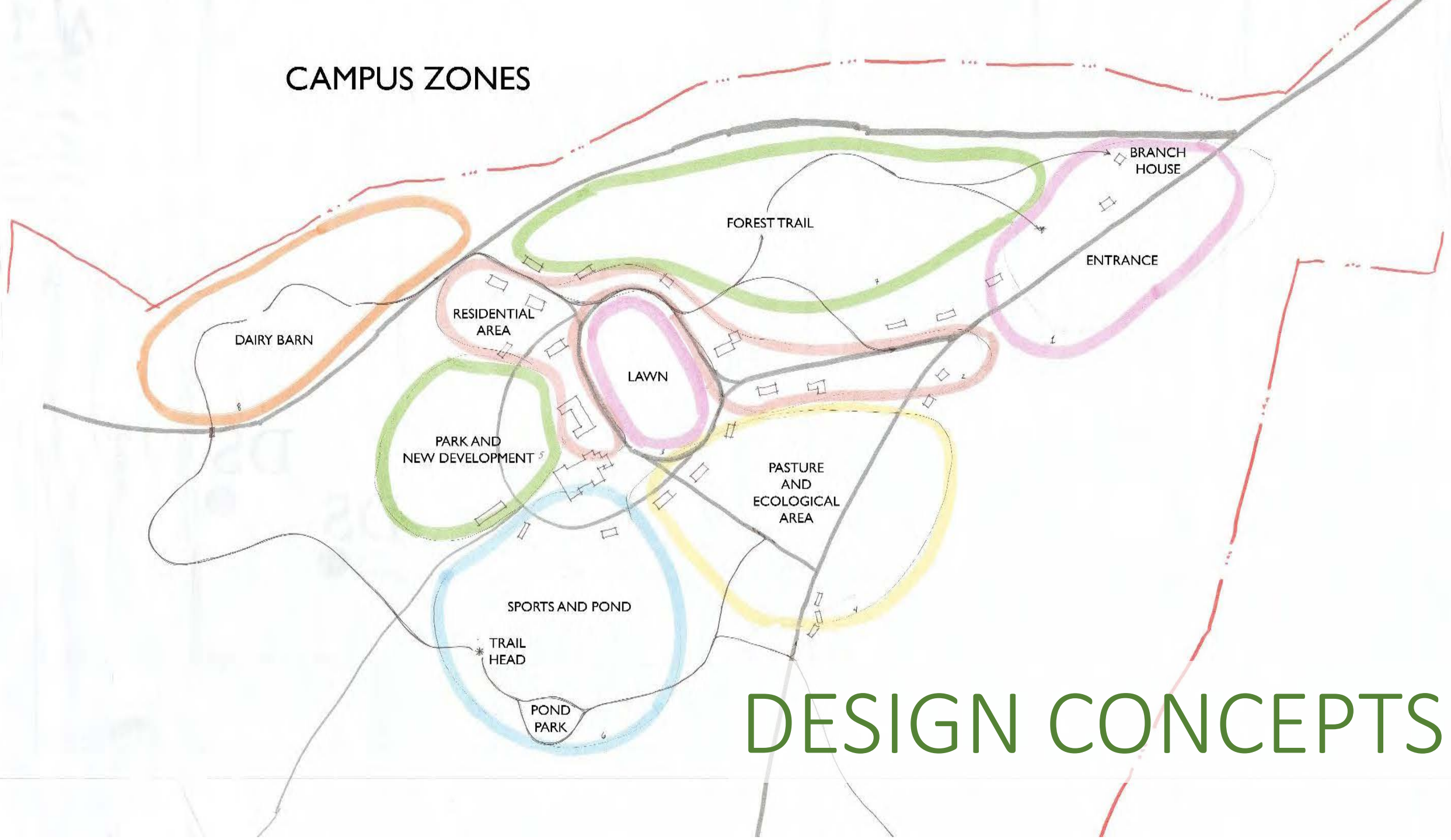
The weekend progressed with intense planning and drafting sessions, site exploration, analysis, and periodic feedback from stakeholders.

ON SUNDAY AFTERNOON...

The charrette concluded with a **final showcase** of proposed design plans intended to accommodate the school's growth whilst remaining sensitive to its historic context.



CAMPUS ZONES



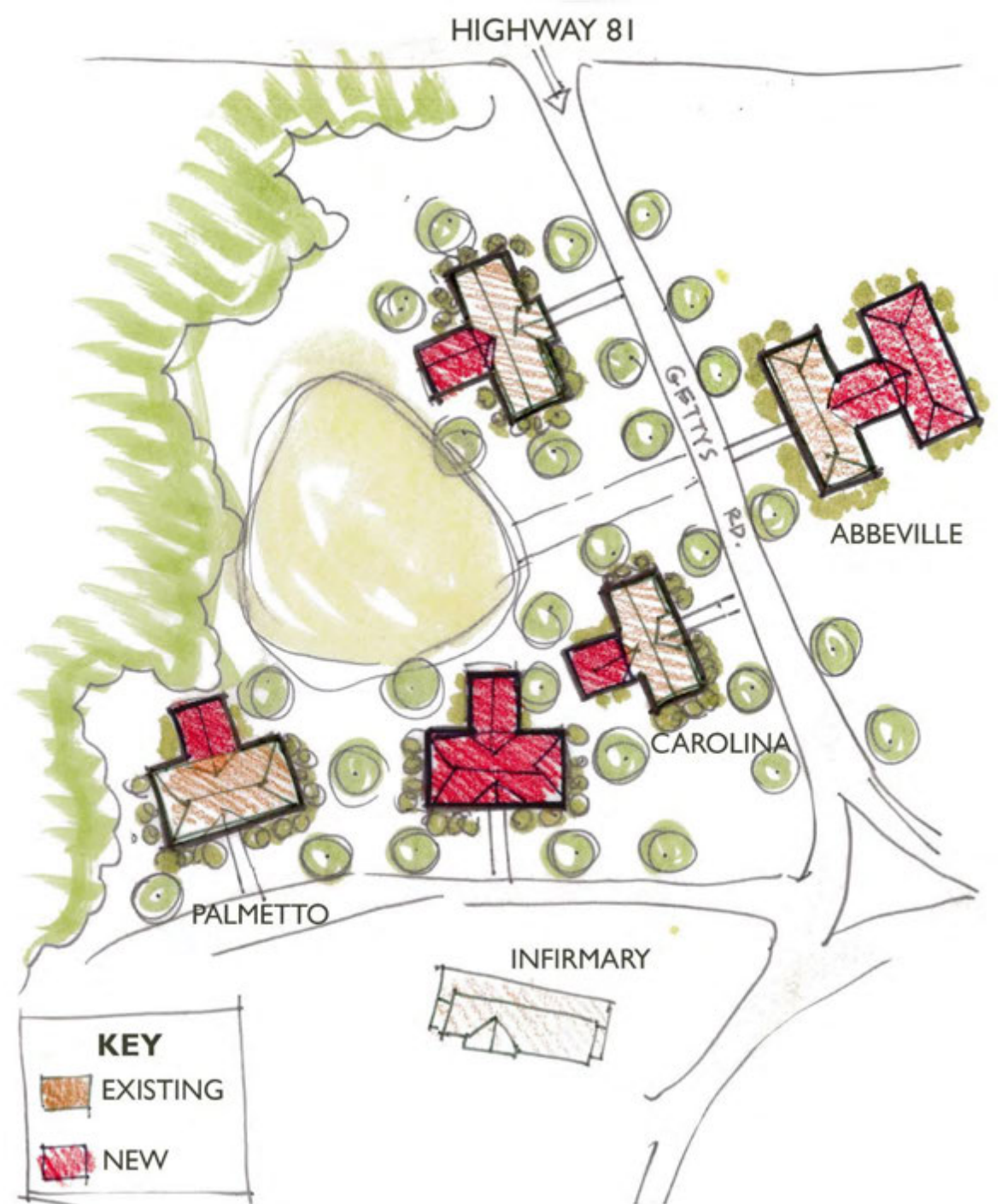
ADDITIONAL HOUSING

with parking, outdoor gathering spaces, and walking trails

COTTAGE ADDITIONS



As enrollment expands at John de la Howe School, the historic cottages can be **expanded in the rear** to house more students. **New cottages** can be placed between the existing cottages and constructed in a similar style.



COTTAGE REAR EXPANSION



Side View of Huguenot Cottage with Rear Addition

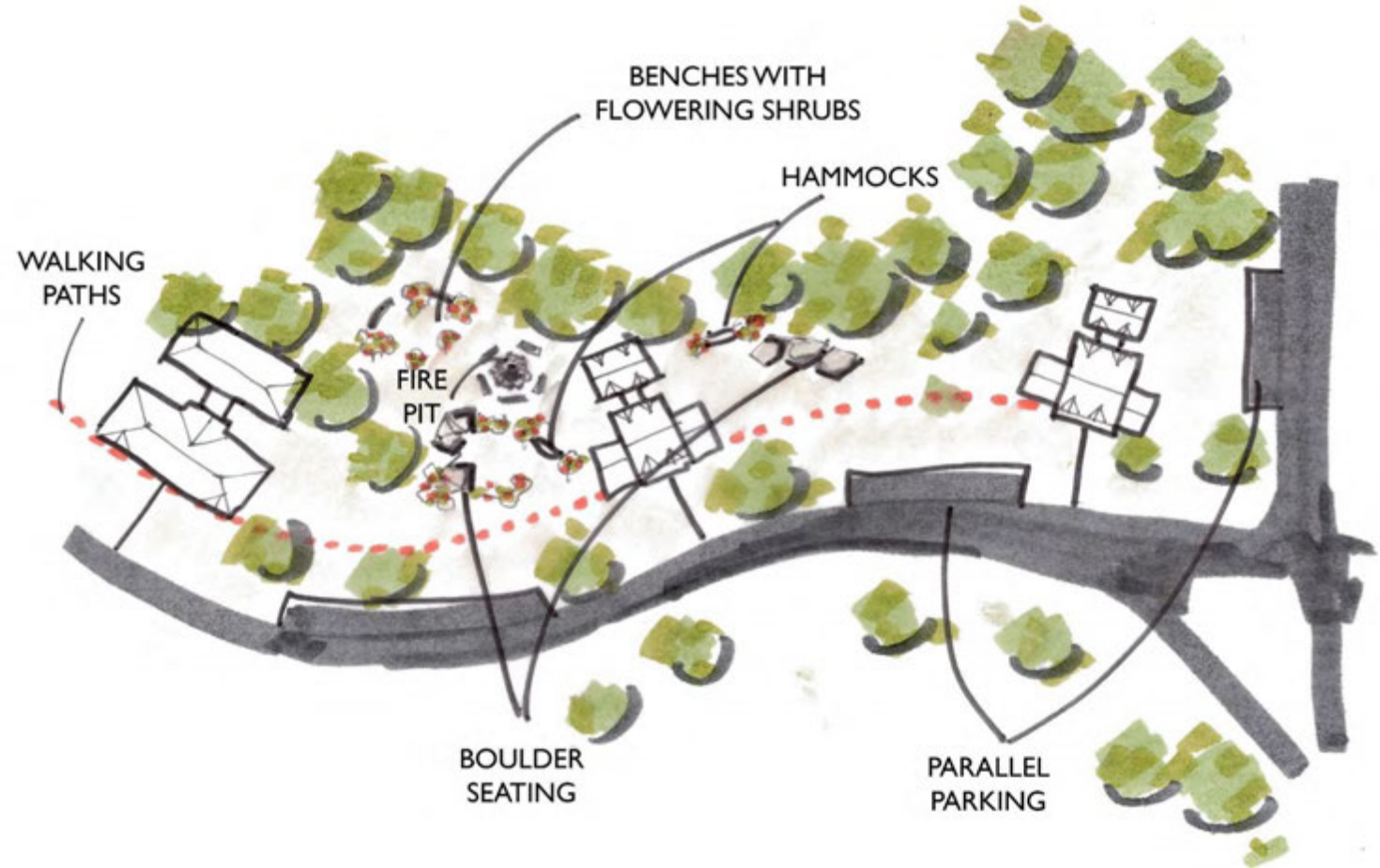
NEW COTTAGES & DUPLEXES

There is additional space for **housing along Gettys Road and Tomb Road**. The housing would **match in style** with the existing cottages and duplexes. **Parallel parking** could exist along Gettys Road.



COTTAGE LANDSCAPES

Land between the cottages can be used to create **outdoor leisure spaces**. Some possible options are boulder seating, benches, fire pits, hammocks, and flowering shrubs. **Parallel parking** can be added between cottages alongside the street. **Walking paths** keep students out of the way of traffic.



NEW SCHOOL BUILDINGS

with parking, outdoor gathering spaces, lab space, and walking trails

CONCEPTUAL MAP

KEY

- New Buildings
- Existing Buildings
- Parking

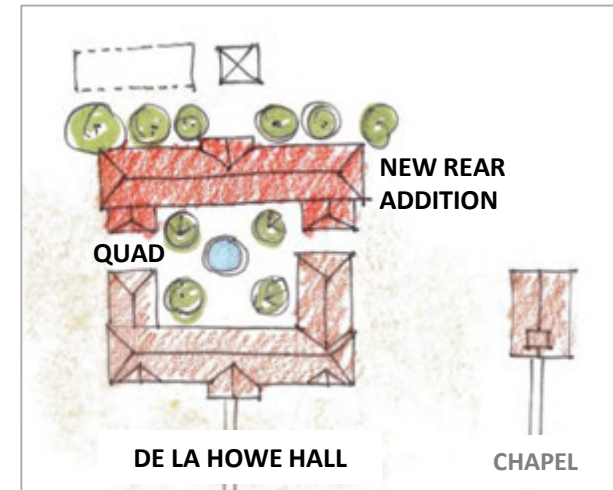


CAMPUS INFILL

Removing the current tennis courts and outdoor pool makes room for an **expanded parking lot** beside the academic buildings. An **additional school building** can be added **behind the current gymnasium**, as **behind the current main school building** (creating an interior quad space.)



COURTYARD QUAD & DORMITORY



Current rear view



Proposed



NEW ACADEMIC AREA

Additional academic buildings can be added in the **cleared area across the street** from the current academic buildings. The park behind the school buildings can be spruced up and include the fishing pond across the street, **creating a connection between the existing and proposed academic areas**. An **additional parking lot** could sit between the new school buildings and the men's cottages.



RESTORED PARK BEHIND SCHOOL

Before



After



RECREATION FIELDS

with greenhouses, demonstration plots, outdoor gathering & lab space, and walking trails

CONCEPTUAL MAP



SPORTS COMPLEX & POND PARK

Students can use a restored **baseball field**, new **tennis courts**, or a **flexible field space** for team sports. Behind the sports complex is a proposed **park area with a large pond** (with potential for an **aquaculture lab**.)



GREENHOUSES & TRIAL GARDEN

Along the main road, **additional greenhouses** can be added beside the existing one. An **outdoor trial garden** can also be placed beside/behind the greenhouses for research and for visitors.



NEW GREENHOUSES & GARDEN



UPDATED ENTRANCE

with demonstration plots, parking, and walking trails

DEMONSTRATION GARDENS & PASTURE

Beyond the **Branch House** (museum and welcome center) and **entry security gate**, one to two **demonstration gardens** can be placed to the right, and a **demonstration pasture** to the left leading to the **barn structure**.

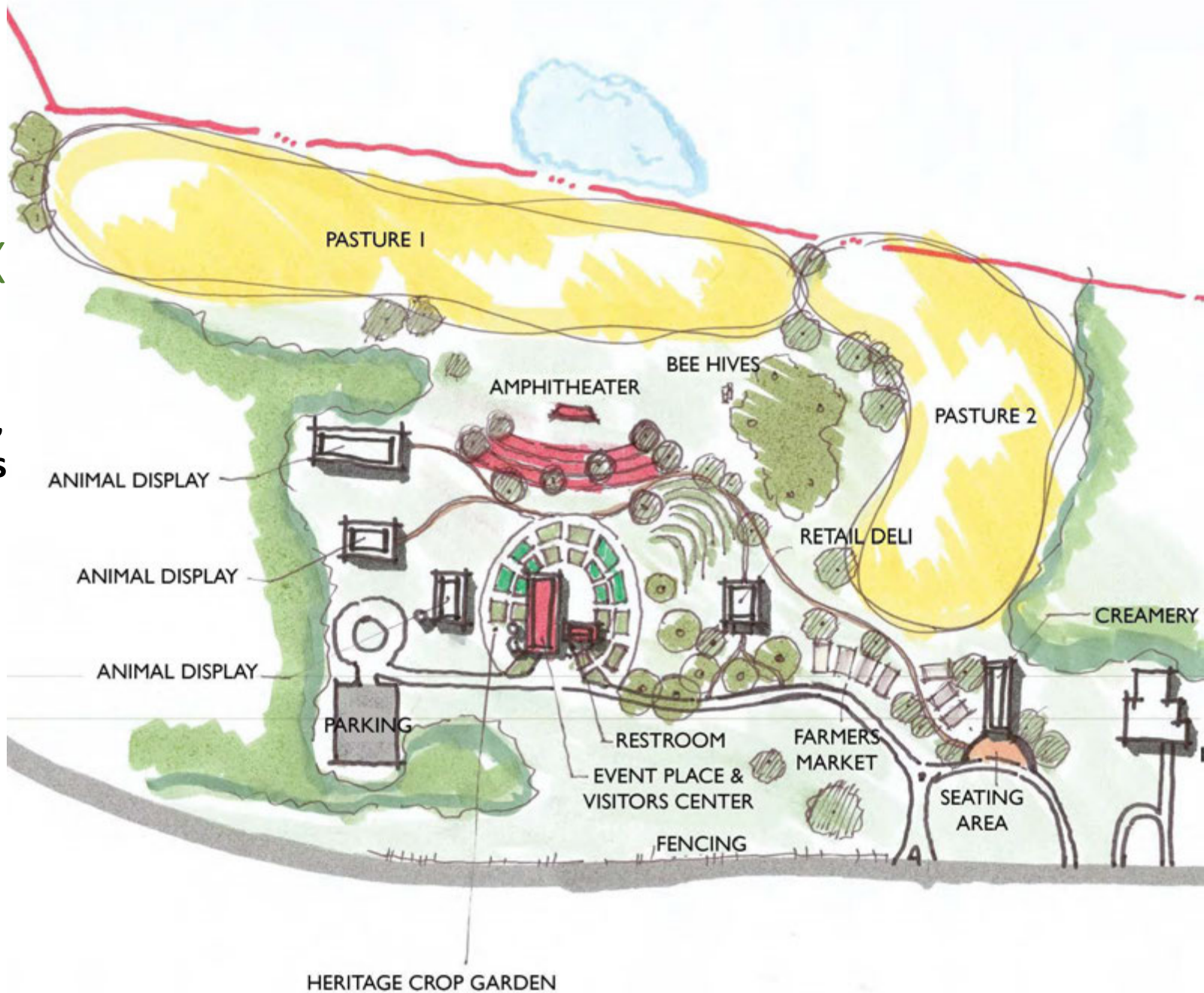


DAIRY BARN EXPANSION

with event venues, parking, outdoor gathering spaces, and demonstration plots

DAIRY BARN COMPLEX

The proposals around the dairy barn include a **creamery**, **farmers market**, **deli & gift shop**, **bee hives**, **amphitheater**, **event space**, **visitors center**, **animal display areas**, **crop display gardens**, and **pastures**.



OVAL LAWN EVENT SPACE

with parking, outdoor gathering spaces, and walking trails

OVAL LAWN

The oval lawn is mostly kept open to be used as an **event space**. A **plaza** is added across from the cafeteria to increase **outdoor seating** in the area. **Parking areas** are added to the downhill areas of the lawn.



**SPECIAL THANKS
to JOHN de la HOWE SCHOOL**

Dr. Sharon Wall, Frank Dorn,
Ken Durham, Gregory
Thompson, Hugh Bland, and
George McLain

UGA CHARRETTE TEAM

Jennifer Lewis, Brandon Platt,
Dr. Barry Croom, Lu Flaherty,
Felipe Barrantes, Deborah Kim,
Ruohan Li, Saadia Rais



Center for Community Design and Preservation

College of Environment + Design

UNIVERSITY OF GEORGIA

www.ced.uga.edu/psa