



MANGROVE PARK

TEAM 8



UNIVERSITY OF
GEORGIA
College of
Environment + Design

FORMS+SURFACES[®]

Kimley»Horn
Expect More. Experience Better.

BELGARD[®]

PAVES
THE WAY





Contents

- I. Project Narrative
- II. Site Context
- III. Site Analysis
- IV. Precedent Imagery
- V. Conceptual Master Plan
- VI. Supporting Graphics
- VII. Material Board
 - Plant Imagery
 - Hardscape
 - Site Furnishing
- VIII. Conclusions



Project Narrative

Mangrove Park provides the City of Gulf Coast with a space for active recreation and community engagement. Reclaiming a formerly neglected site, this space has now become a healthy area for both humans and native wildlife. Incorporating amazing coastal views, extraordinary plant life, and an inclusive design program, Mangrove Park is able to engage everyone in the community.

Goals:

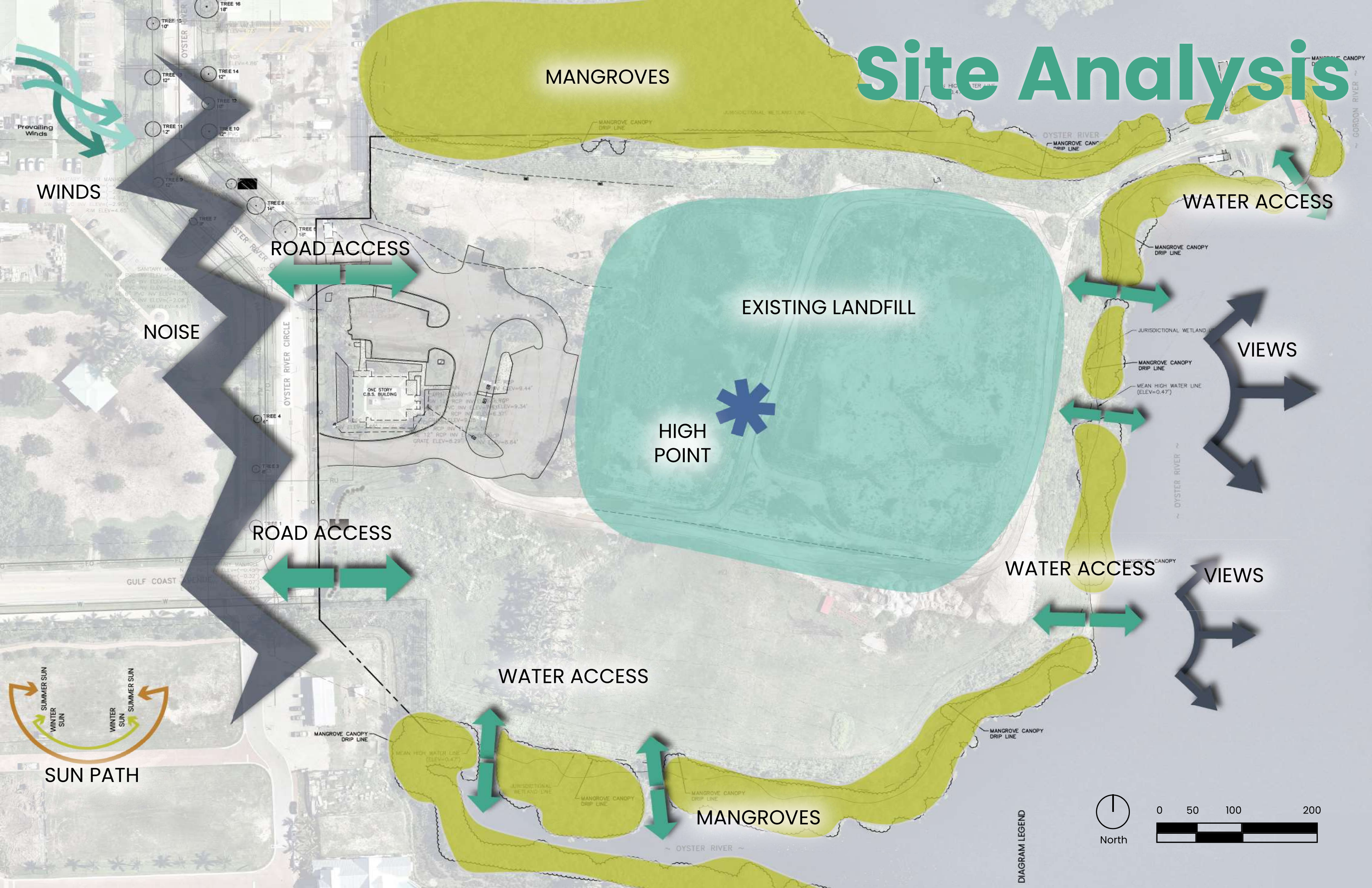
- Engage the community with the natural landscape
 - Boardwalk for nature observation
 - Sunrise viewing area
 - Locations for kayaking and snorkeling
- Equitable programming for people of all ages and backgrounds
 - Playspaces for older and younger kids
 - Splashpad
 - Pavilion for community events and passive recreation
- Sustainable and hurricane resilient design
- Preserve v existing natural features and promote wildlife
 - Preservation of mangroves and wetlands

Site Context

- Public park project for City of Gulf Coast
- Total of 15 acres for park space
- Empties into Gulf of Mexico 1/2 mile away
- Historically used as a landfill for organic waste
- Surrounding population of 300,000–350,000 people throughout the year
- Sub-tropical climate
- USDA Plant Hardiness zone 10A



Site Analysis



WINDS

NOISE



SUN PATH

MANGROVES

EXISTING LANDFILL

HIGH POINT

WATER ACCESS

VIEWS

VIEWS

WATER ACCESS

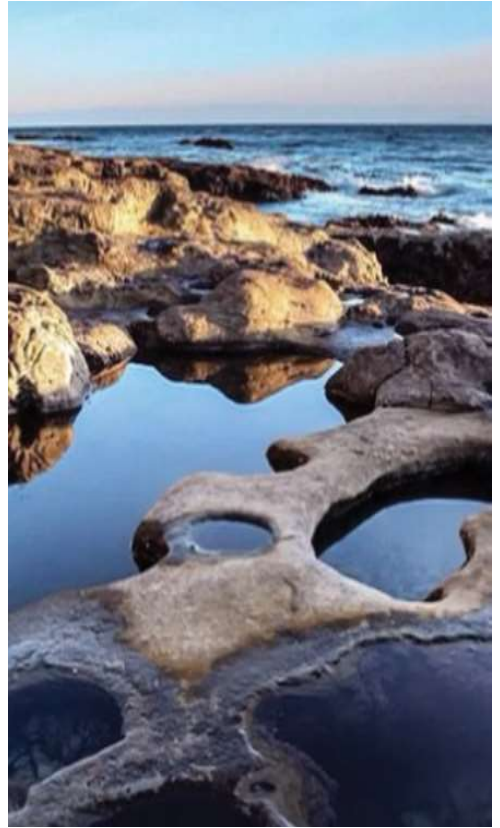
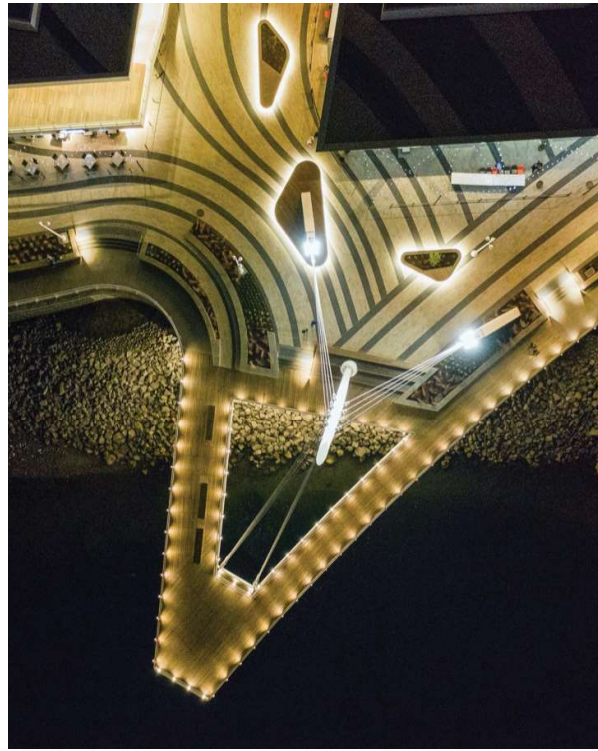
MANGROVES

WATER ACCESS

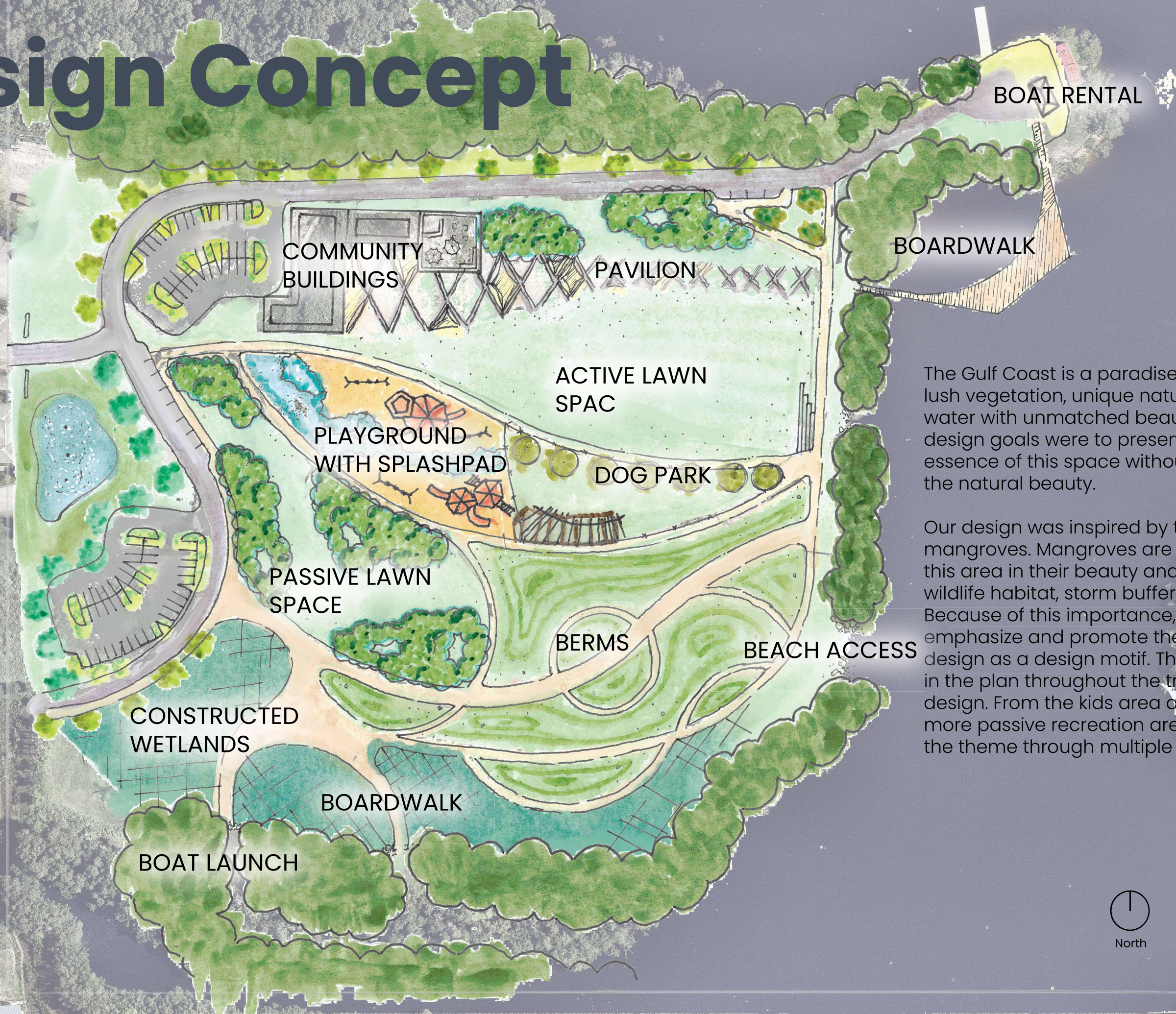
DIAGRAM LEGEND



Precedent Imagery



Design Concept

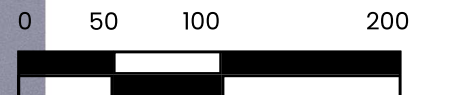


The Gulf Coast is a paradise like no other, with lush vegetation, unique natural features, and water with unmatched beauty and color. Our design goals were to preserve and promote the essence of this space without taking away from the natural beauty.

Our design was inspired by the form of mangroves. Mangroves are so important to this area in their beauty and their function as a wildlife habitat, storm buffer, and erosion control. Because of this importance, we wanted to emphasize and promote the mangroves in our design as a design motif. This motif can be seen in the plan throughout the trail layout and pavilion design. From the kids area and splash pad to the more passive recreation areas, the design carries the theme through multiple scales.

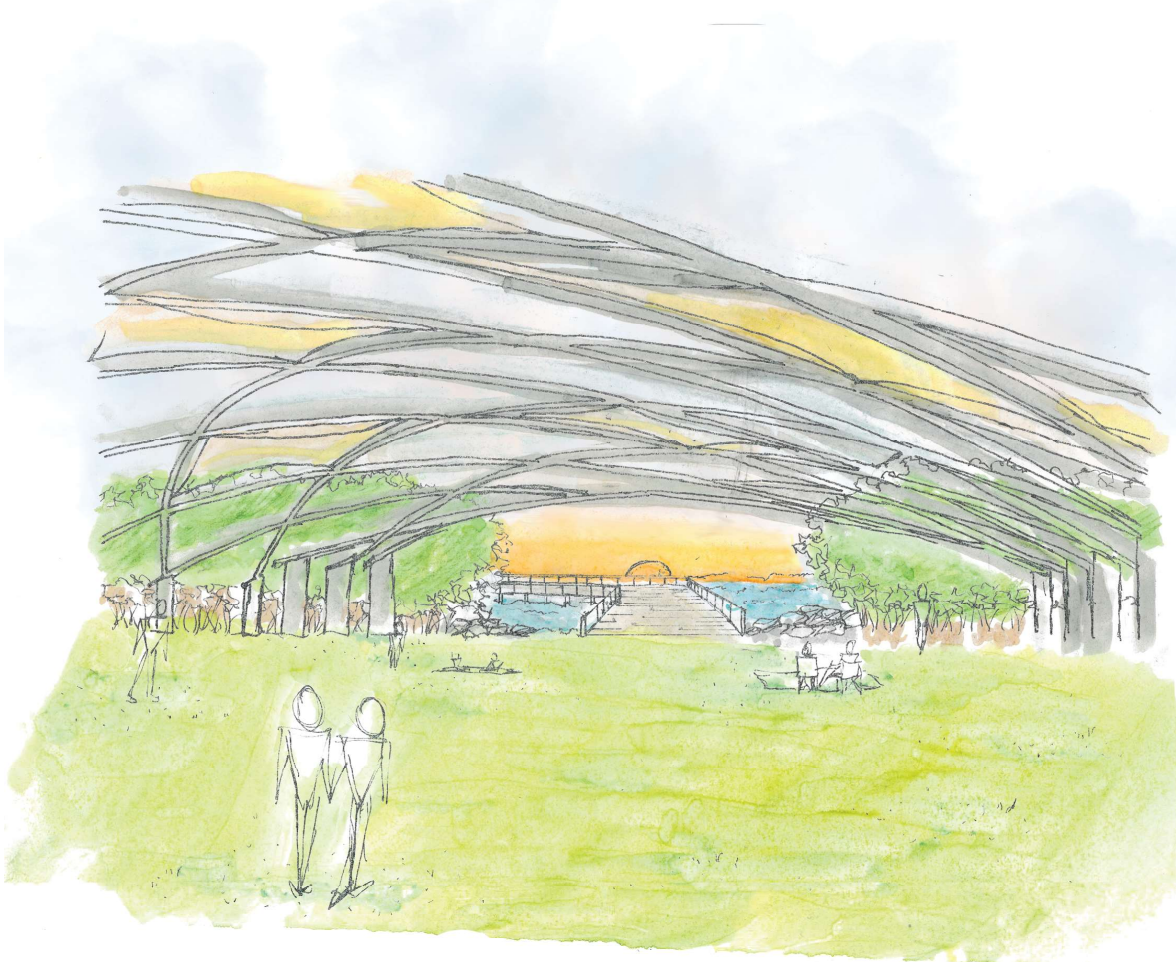


North

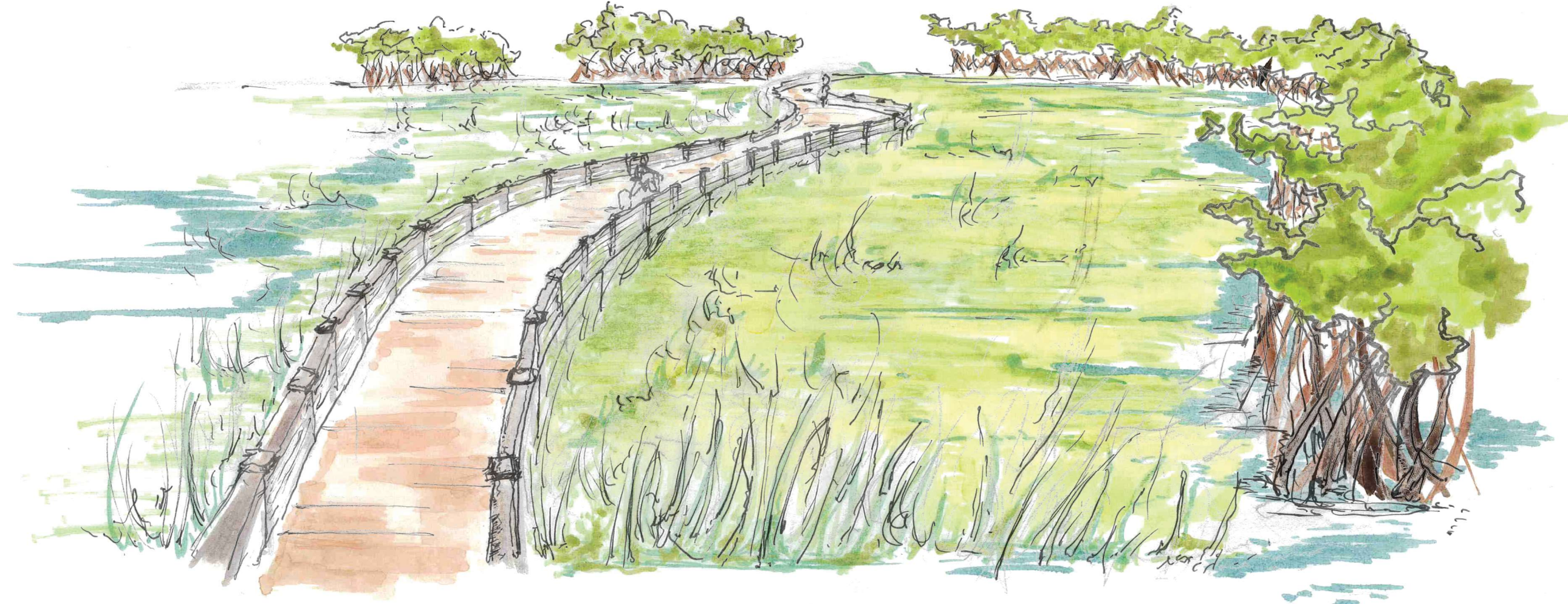


Supporting Graphics

This section showcases the slope of the open lawn area leading into the mangroves and boardwalk. These staggered viewing slabs allow for viewing the mangroves and the sunrise.



The pavilion, showcased above, is designed to be used for small or large scale events and provide a view for the entire park. The open lawn area allows for recreation and viewing areas towards the mangroves. Those braving the early mornings can view the magnificent sunrise.



In addition to beauty and aesthetics, this park is designed with hurricane resilient material choices and stormwater management design practices. The constructed wetlands, shown to the left, provides filtration of water runoff and the berm provides physical protection from high winds. The constructed wetland pathways, showcased to the left, can also be used for more passive enjoyment of nature and the park.

Materials Board

Plant Material



Plant Design Inspiration



Design Inspiration for the wetland area



Design Inspiration for lush planting beds



Design Inspiration for the wetland area



Design Inspiration for lush planting beds

Hardscape Materialism & Site Furnishings



Hexagonal Paving for Cafe Area
by Dedale



Seashell Aggregate for Paving
by Material District



Vector Seating System with Moss Powdercoat
by Forms and Surfaces



Tonya Receptacle with Moss Powdercoat
Forms and Surfaces



Aptos Path Light
by Forms and Surfaces



Pet Disposal Kit
by Pet Pickups



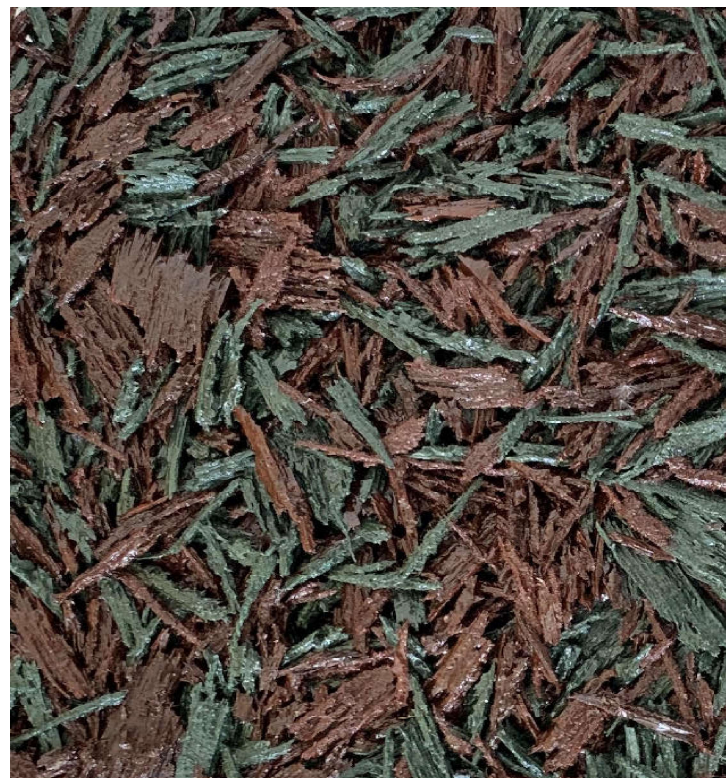
Cordia
by Forms and Surfaces



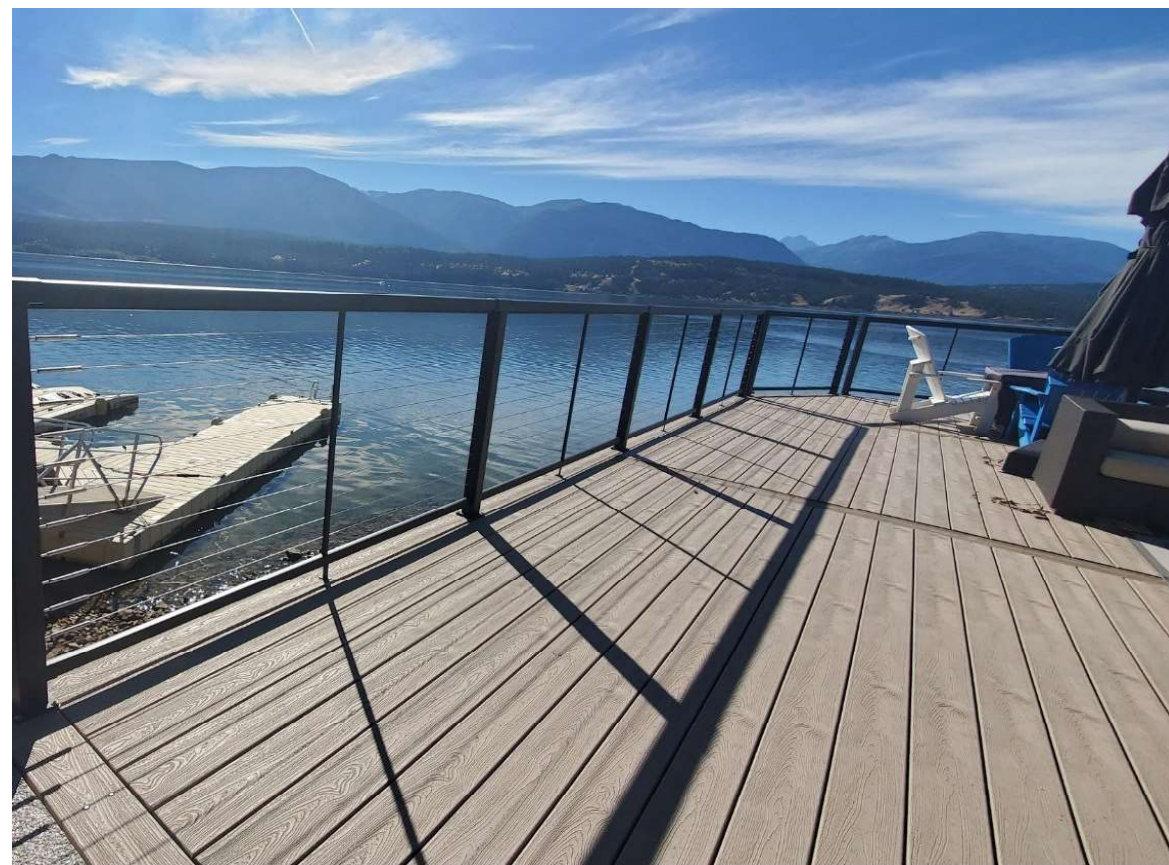
Bike Garden Bike Rack
by Forms and Surfaces



Mangrove inspired playground
by Earthscapes



Robber Mulch for Playground
by Limegate Solutions



Cable Railing
by Vista Railing Systems



Composite wood boardwalk
by J. Gibson McIlvain Company

Team Information

Team 8

Henry Vencill

Henry is a 3rd year landscape architecture student with a minor in Art History. His areas of interest include urban park design, transportation studies, and ecological restoration.

Karlie Roper

Karlie is a 4th year landscape architect also looking to complete a sustainability certificate. She has a concentration on outdoor park spaces that promote active living and is currently working towards her Bachelor's degree in Landscape Architecture and looking forward to a career in private practice design.

Jasmine Querido

Jasmine is a 2nd year student landscape architecture student looking to complete a certificate in Urban Planning and GIS. She has a concentration in 3D modeling and uses of open source software in Landscape Architecture.

Cameron Castorina

Cameron is a 2nd year landscape architecture student and is working on completing his environmental ethics certificate. He hopes to focus on urban design, recreational and entertainment design, and mixed-use design.