



OYSTER RIVER PARK

CARTER GILSON, ANNA JORDAN, ALEC DULL, AND BROCK CORBIN





3	NARRATIVE
4	INVENTORY
5	ANALYSIS
6	MASTER PLAN
7-9	VIEWS
10	PRECEDENTS
11-14	MATERIALS
15	CONTACT

CONTENTS



Our Oyster River Park Plan will transform this landfill into a beautiful area that provides countless benefits to the public and the City of Gulf Coast. This 15-acre park will preserve and enhance the existing vegetation and wildlife while supplying recreational use to the community. Our park introduces a Community Center, playground, splashpad, pavilion, boat and kayak launches, boardwalk, and multiple open spaces. The modern 20,000 square foot Community Center will become a landmark for the community while the Earthworks Event Space and adjoining plaza will be the ideal spot for hosting classes, seminars, and events, thus generating revenue for the city. The park will accommodate people of all ages and is designed to be ADA accessible. Our Oyster River Park, if implemented, will greatly serve the City of Gulf Coast and the population for years to come.



- CHALLENGES:**
- UNDERLYING ORGANIC WASTE
 - NON-STRUCTURAL SOIL
 - ENVIRONMENTAL CONCERNS
 - WEATHER
 - REGULATION

- OPPORTUNITIES:**
- BLANK SLATE
 - MANGROVE VISTAS
 - BEACH/WATER ACCESS
 - COMMUNITY ENGAGEMENT
 - RECREATION
 - TOURIST ATTRACTION
 - HEALTH BENEFITS
 - EVENT SPACE
 - CONNECTION TO NATURE

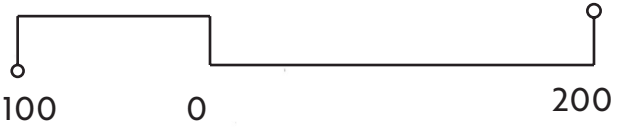
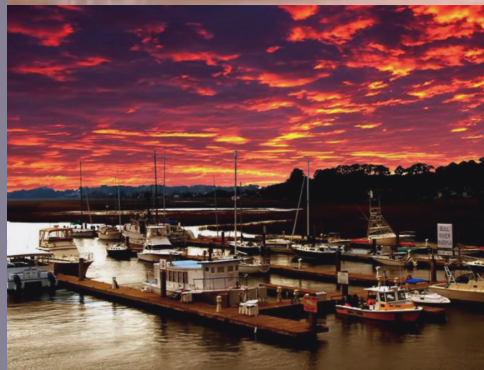
Our team worked to assess the site by cataloging the existing conditions from what we could see in the aerial view. Historically used as a landfill, this site poses unique challenges to the design such as mitigating the underlying organic waste and lack of structural soil. It is also located right on the edge of Oyster River, home to a host of native plants and animals and vulnerable to hazardous weather. However, this site also offers a multitude of opportunities, because we get to design from a blank slate. This gives us the freedom to create an engaging space that can be used to benefit the community not only through its health benefits as a recreational facility, but also through the additional revenue generated from a tourist attraction.



- CHALLENGES:**
- UNDERLYING ORGANIC WASTE
 - NON-STRUCTURAL SOIL
 - ENVIRONMENTAL CONCERNS
 - WEATHER
 - REGULATION

- OPPORTUNITIES:**
- BLANK SLATE
 - MANGROVE VISTAS
 - BEACH/WATER ACCESS
 - COMMUNITY ENGAGEMENT
 - RECREATION
 - TOURIST ATTRACTION
 - HEALTH BENEFITS
 - EVENT SPACE
 - CONNECTION TO NATURE

For our first design iteration, we focused on getting our ideas on paper in the form of bubbles to designate separate spaces. Using this method allowed us to make quick decisions without getting bogged down by the details. This diagram shows where we decided to preserve the wetland area and palm trees on site and how we laid out where the buildings, parking lots, playground, kayak launch, marina, and connecting boardwalks would go. It was important to the design to have engagement with the community with the building near the street, as well as a play area near the main building. From inside the park, the amenities extend across the site with unique experiences in each spot.

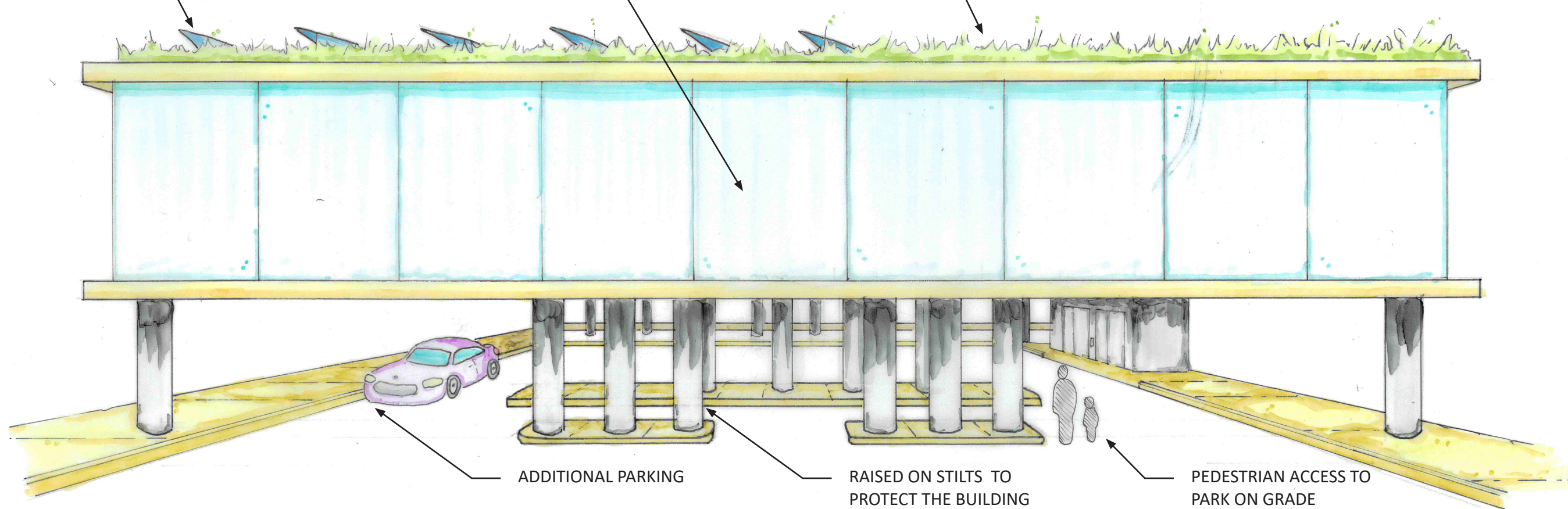


MASTER PLAN

SOLAR PANELS
TO POWER THE
FACILITIES

GLASS WINDOWS
FOR VIEWS ACROSS
THE PARK

GREEN ROOF TO
CAPTURE WATER
AID SOLAR PANELS



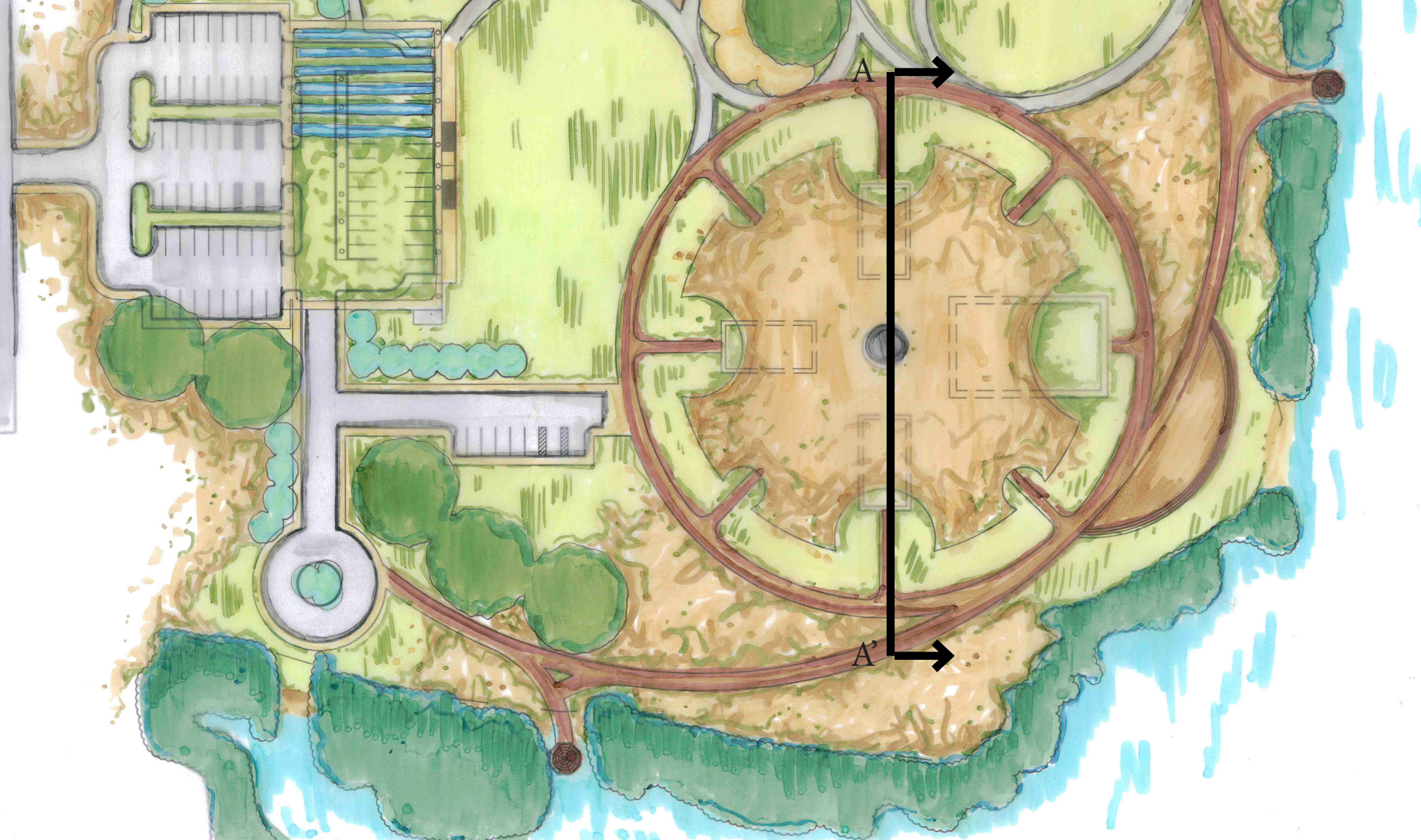
ADDITIONAL PARKING

RAISED ON STILTS TO
PROTECT THE BUILDING
FROM FLOODING
AND PROVIDE MORE
PARKING UNDERNEATH

PEDESTRIAN ACCESS TO
PARK ON GRADE

*NOT DRAWN TO SCALE

CENTER PERSPECTIVE

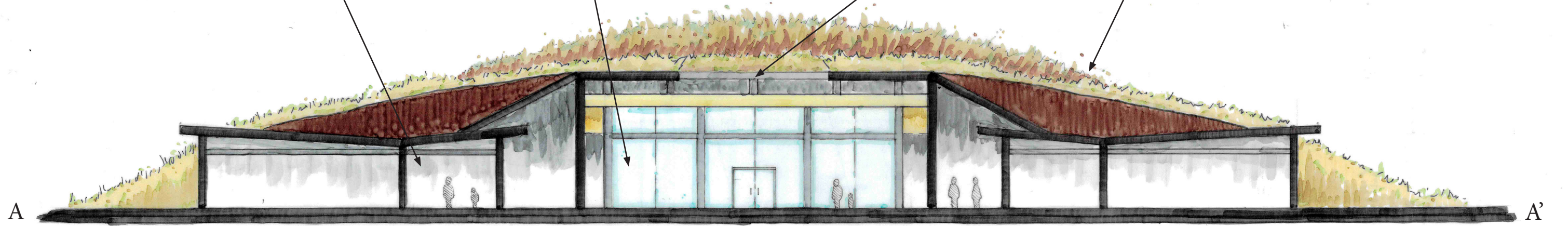


INDOOR SPACE FOR RECREATION AND EDUCATIONAL OPPORTUNITIES

GLASS WINDOWS FOR VIEWS IN THE PLAZA

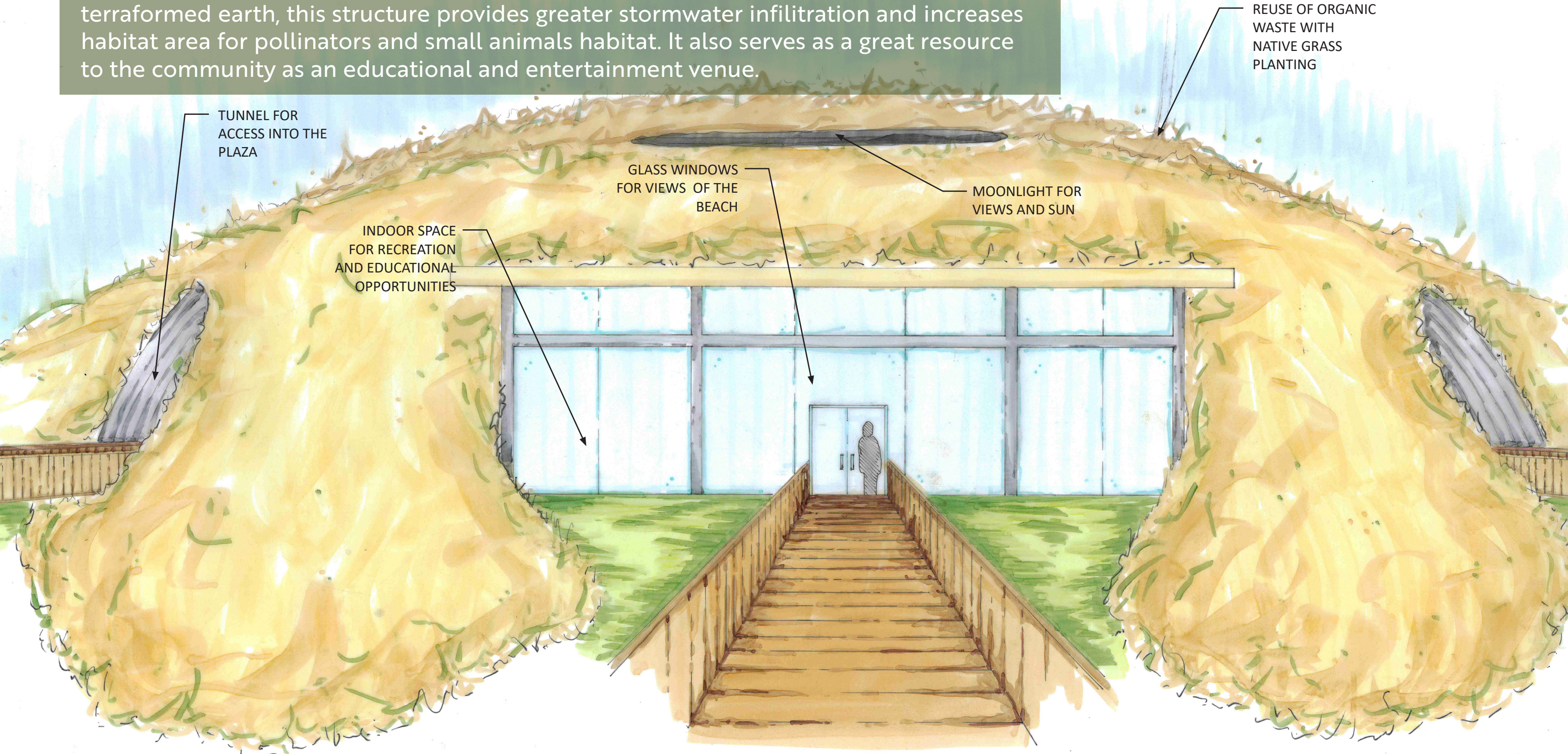
MOONLIGHT FOR VIEWS AND SUNLIGHT

REUSE OF ORGANIC WASTE WITH NATIVE GRASS PLANTING



EARTHWORK ELEVATION

Utilizing the underlying organic waste on site, the material is built up to connect the four buildings in the Earthwork Plaza. By seeding dense grass across the roof of the terraformed earth, this structure provides greater stormwater infiltration and increases habitat area for pollinators and small animals habitat. It also serves as a great resource to the community as an educational and entertainment venue.



*NOT DRAWN TO SCALE

EARTHWORK PERSPECTIVE



MOON ROOF PENTHOUSE - HERZOG AND DE MEURON



WALKER'S LANDING



MCCORD PARK PLAYGROUND AND SPLASH PAD



This is a collection of some of the projects that inspired our design for Oyster River Park. We really wanted to focus on maintaining natural form through earthwork and organic circulation while introducing a modern aesthetic.

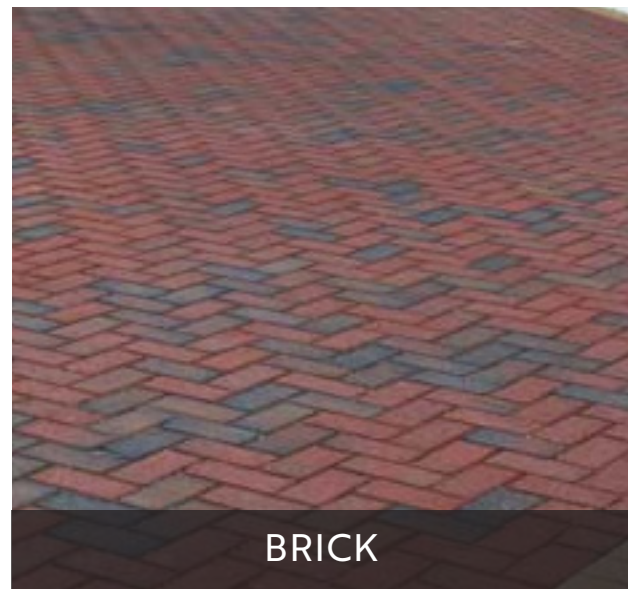
GARDEN OF COSMIC SPECULATION - CHARLES JENKES



BUILDING AND GARAGE - HERZOG

PRECEDENTS

PLAZA



BRICK



CONCRETE PAVERS



CONCRETE PAVERS



STAMPED CONCRETE

BOARDWALK



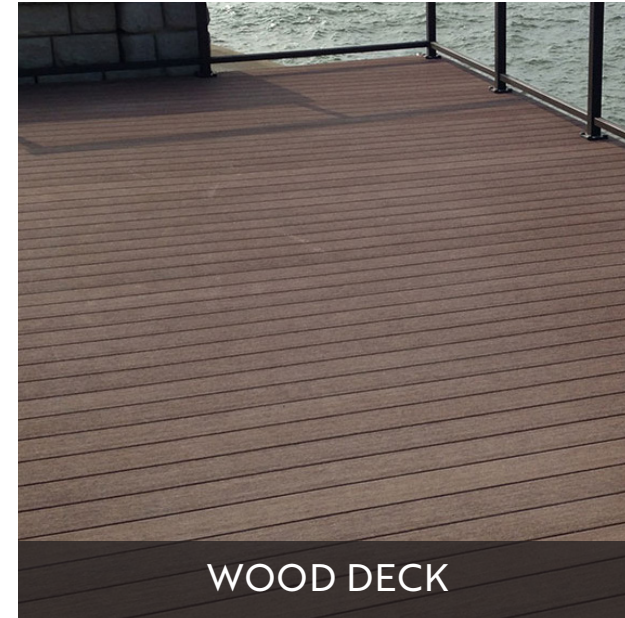
METAL HANDRAIL



WOODEN HANDRAIL



WOOD DECK



WOOD DECK

PLAYGROUND



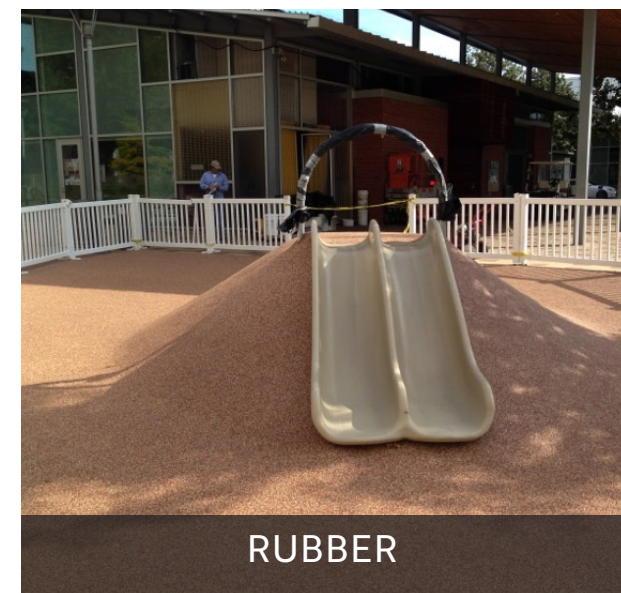
MULCH



MULCH



CONCRETE

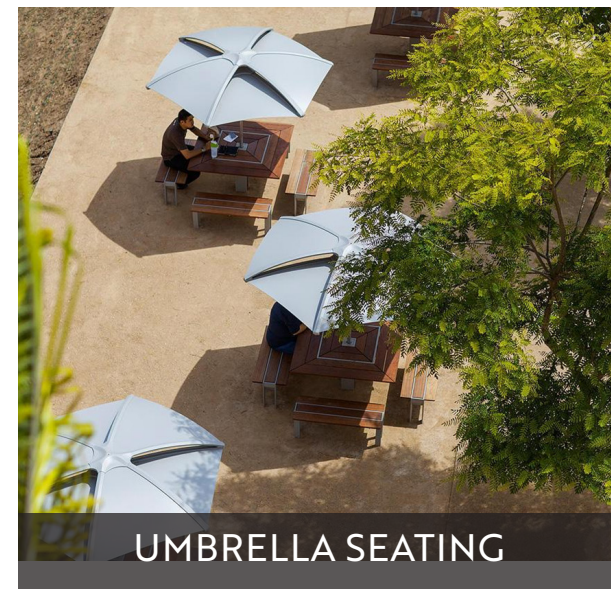


RUBBER

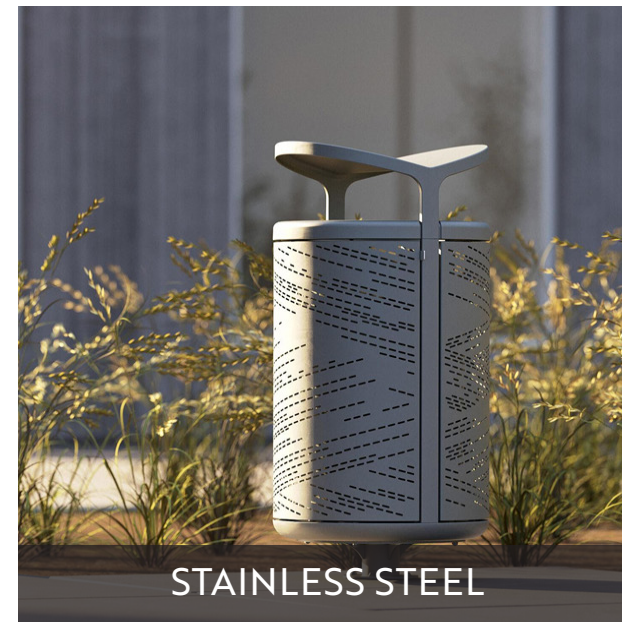
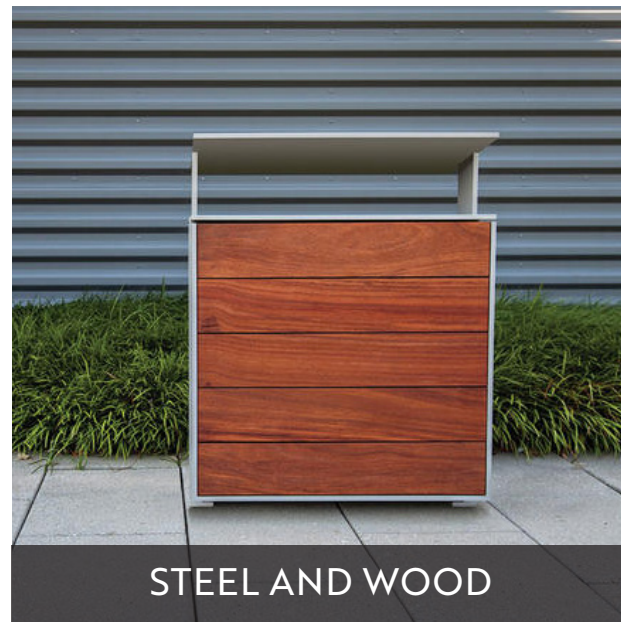
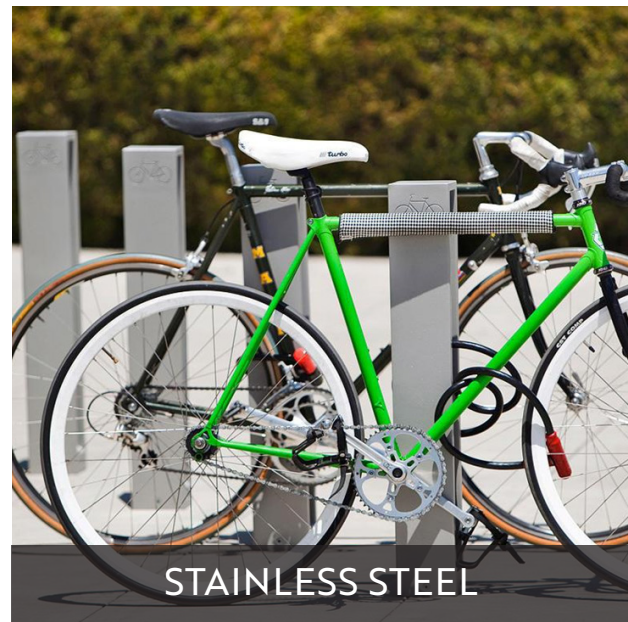
HARDSCAPE

(some paving materials available at Belgard)

SHADE



BIKE RACKS AND RECEPTACLES



LIGHTING



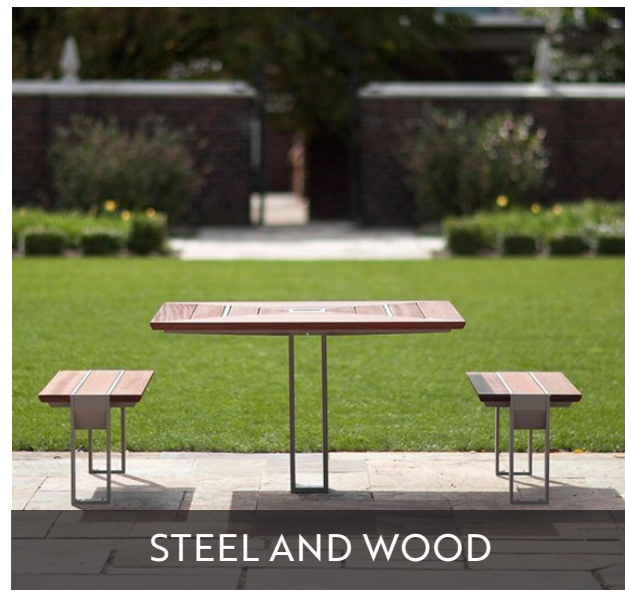
SITE FURNISHINGS

(most furnishings available through Forms and Structures)

PLAZA AND CAFE SEATING



STEEL AND WOOD



STEEL AND WOOD



STEEL AND WOOD



STEEL

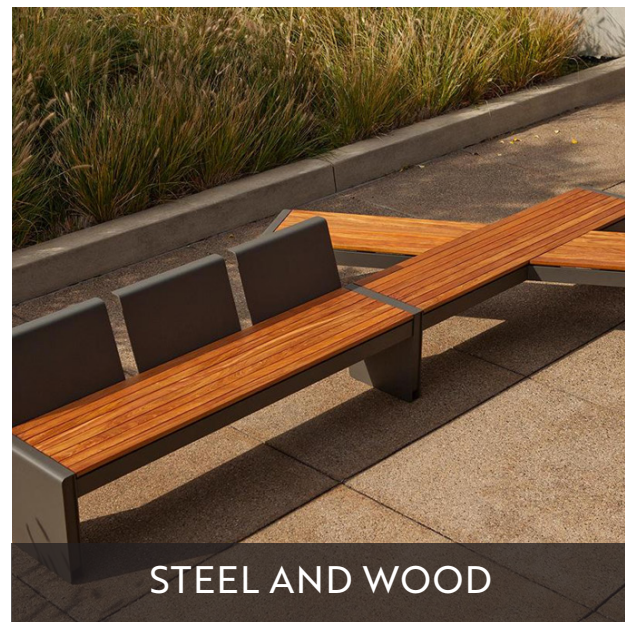
BENCHES



STEEL AND WOOD



POWDER COAT ALUMINUM



STEEL AND WOOD



STEEL AND WOOD

PLAYGROUND



PLAYGROUND



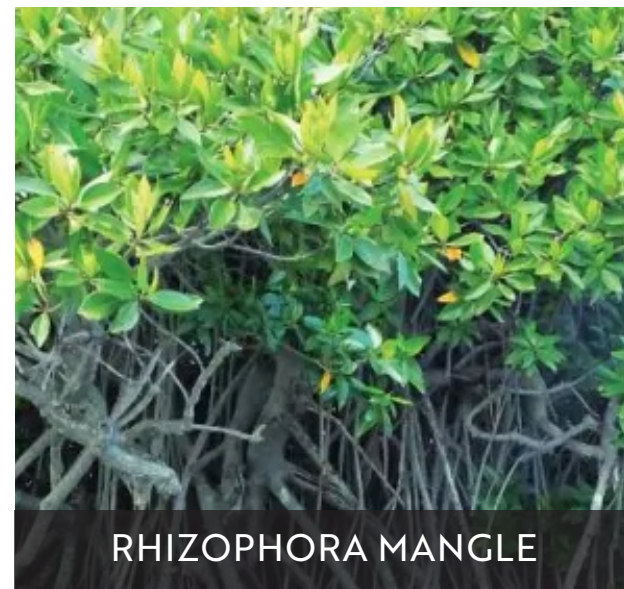
SPLASH PAD

SITE FURNISHINGS

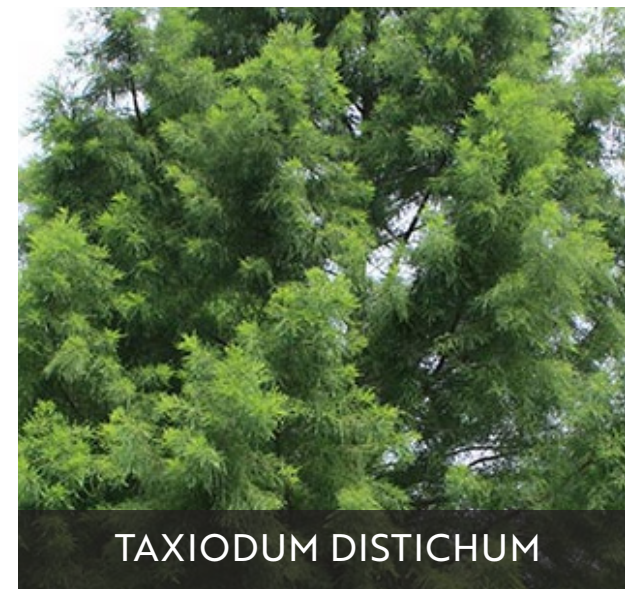
TREES



SABAL PALMETTO



RHIZOPHORA MANGLE



TAXIODUM DISTICHUM



MAGONOLIA VIRGINIANA

SHRUBS



JAQUINIA KEYENSIS



CAPSIUM ANNUUM



LANTANA INVOLUCRATA



DONDONAEA VISCOSA

GRASSES



UNICOLA PANICULOTA



SPARTINA PATENS



ANDROPOGON GLOMERATUS



PANICUM AMARUM

PLANTINGS

(some trees available from Select Trees)



ANNA JORDAN
<https://www.linkedin.com/in/anna-jordan-2379b9220/>



CARTER GILSON
<https://www.linkedin.com/in/cartergilson/>



Together, our team worked to create a space that we are proud to present to you as a thoughtful approach to a multi-functional recreational facility! We thank all of you for this opportunity and we look forward to hearing your feedback on our work!



ALEC DULL
<https://www.linkedin.com/in/alec-dull-18182022b/>



BROCK CORBIN
<https://www.linkedin.com/in/cbcorbin>