

THEvillage

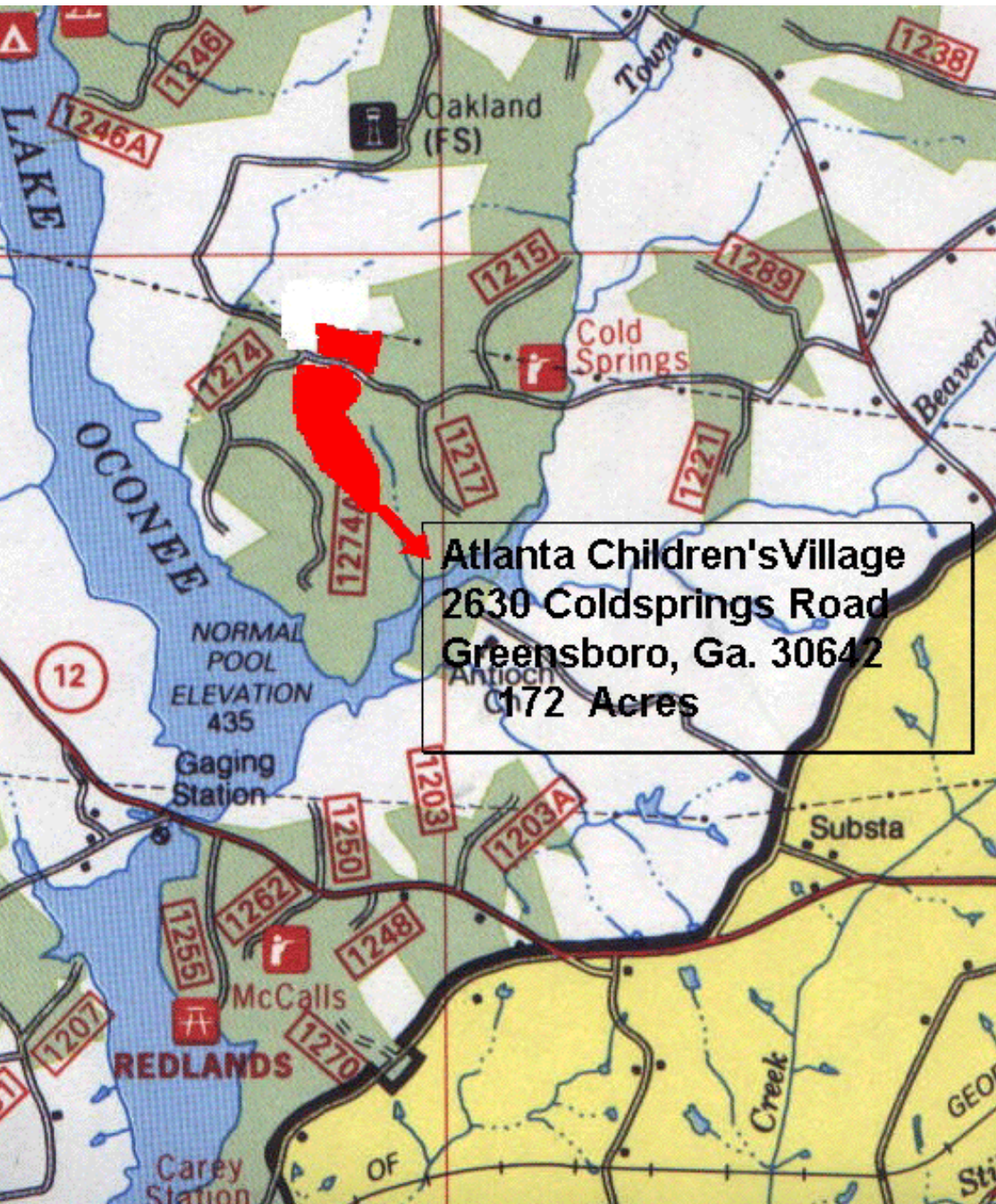
For directions

follow your heart



INTRODUCTION

Atlanta Children's Foundation Project in Greene County, Georgia



Atlanta Children's Village
2630 Coldsprings Road
Greensboro, Ga. 30642
172 Acres

Purpose:

To develop a year-round housing and recreational center for children in foster care.

The Village will also serve as a summer camp for children at risk.

Location:

Greene County near Oconee Lake; the 124 acre site is enveloped by the Oconee National Forest and consists of both wooded and open space.

THEvillage

INTRODUCTION

Methodology:

The Atlanta Children's Foundation Project
"The Village Evolves"

A. Issue Analysis - PS&O Staff

- PS&O staff meet with Project Sponsors - March 19, 2003
- Research: Map assemblage and background investigation

B. Site Analysis - Professor Marguerite Koepke, PS&O staff, students

- Lecture in Koepke's Class - Cassity and Machado - April 17, 2003
- Site visit and visual analysis/vegetation survey - Koepke, Lewis, Machado, Roberts and students April 21, 2003
- Graphic Analysis Presentation - May 01, 2003

C. Intensive Design Charrette - PS&O staff, UGA faculty, students –

May 19 - 21, 2003

- Confirm Program Elements
- Groundtruthing
- Idea Generation
- Development of Alternatives
- Evolve Solutions
- Refine and polish

D. Production and Final Presentation - PS&O Staff and students

May 22- June 17, 2003

- Illustrative Base Map
- Scale Model
- Graphic Identity Program
- Building Design: Floor Plans, Elevations and Perspectives
- Site Details and Preliminary Specifications
- Poster Production
- Power Point Presentation - June 17, 2003

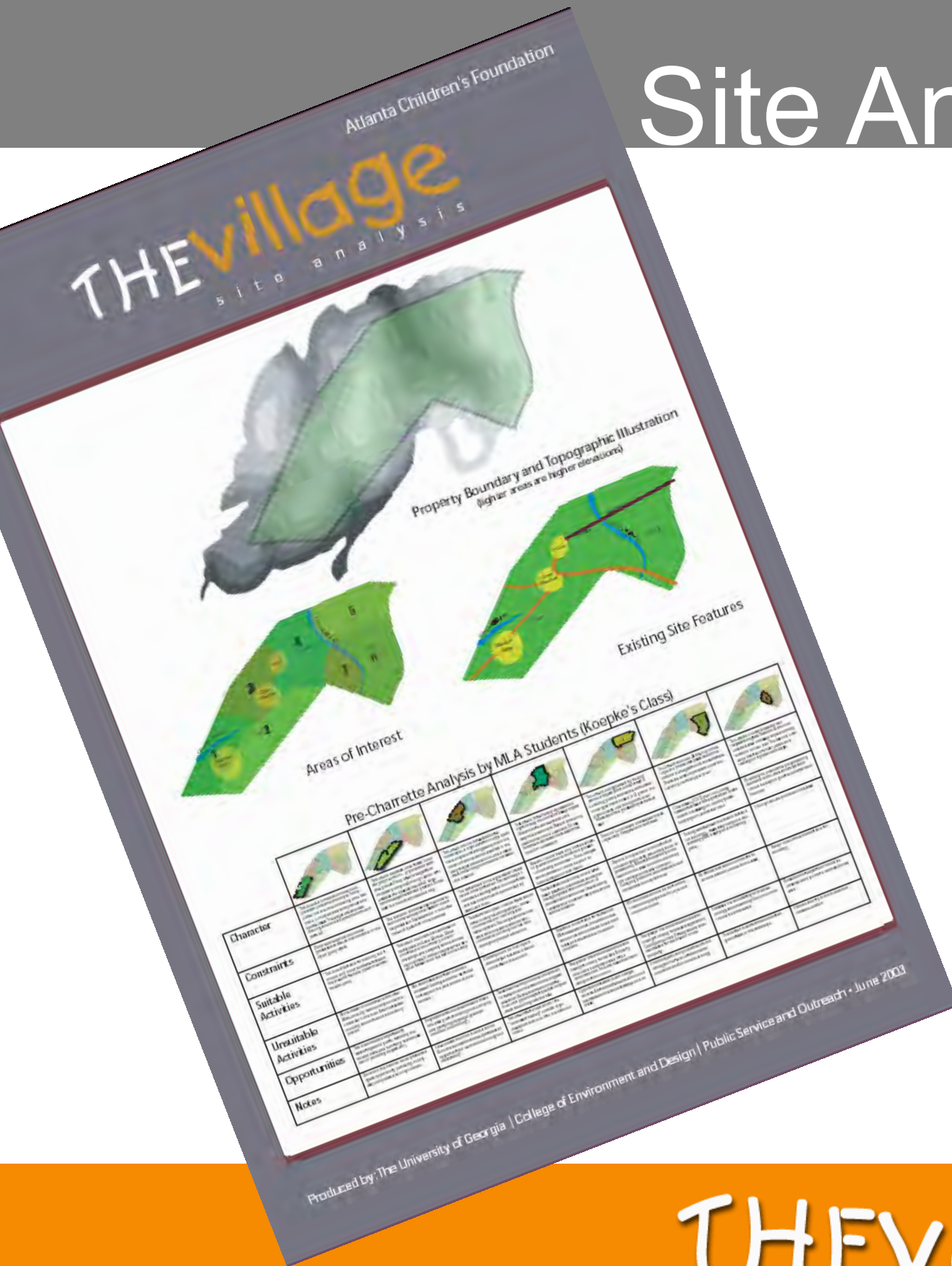
E. Future Activities - New partnerships should be developed with UGA units and US Forest Service (and/or others) for developing:

- environmental and ecological education programming,
- a tree identification, protection and replacement program,
- guest lectures on other topics,
- development concept for the remaining parcel, and
- leadership development programming.

THEvillage



Site Analysis



THEvillage



THE SITE

PROF. KOEPKE'S CLASS

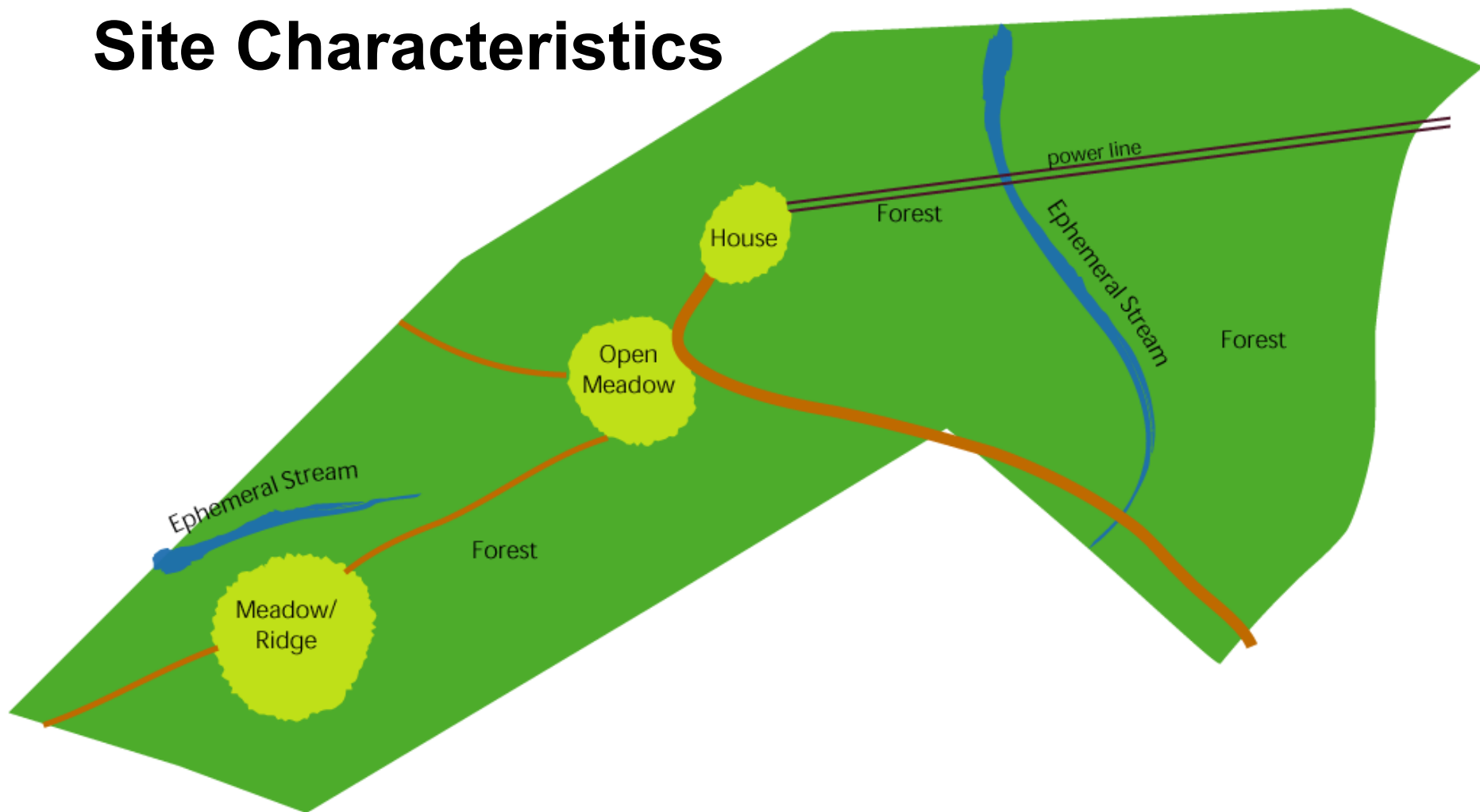


THEvillage

Produced by: The University of Georgia | College of Environment and Design | Public Service and Outreach



Site Characteristics



- Wooded steep slopes that are susceptible to erosion.
- Successional forest of young oak/hickory stands with some older species among them.
- Few exotic species noted.
- Medium to dense understory.
- Few open fields and fewer streams.
- Edge habitat consists of vines, sumac and sweetgum.
- Grassy broomsedge areas off of a larger broomsedge field.

THEvillage



THE PROGRAM

Program Elements | Log Buildings | The Village Approach | Safety & Security

ELEMENTS	FEATURES	CAPACITY
Year Round Residences	5 Cabins	50 children
Seasonal Residences	20 Cabins	200 children
Athletic Facilities	Gymnasium, Playground, Swimming Pool and Ballfields	10,500 sq ft
Performing Arts Facilities	Recording Studio, Amphitheater, Chapel, Gymnasium, Camp Lodge.	Variable
Space for Spiritual Growth	Chapel	2,050 sq ft
Self-esteem and Team Building Facilities	Ropes Course, Hiking Trails, Camp Sites	Variable
Emergency Intervention Facilities	Cabins	Variable
Staff Residences	3 Staff Cabins	Seasonal
Outdoor Recreation Areas	Swimming Pool, Hiking Trails, Boat Dock, Barn, Camping Platforms	Variable
Central Administration Buildings	Administrative Offices, Dining Hall, Indoor Performance Space, Infirmary, Laundry, Arts & Crafts Space	

THEvillage



THE PROGRAM

Program Elements | **Log Buildings** | The Village Approach | Safety & Security

The consistent design of the Village's rustic log buildings will help reinforce the community feel and sense of being in the woods without being apart from civilization. Inspiration for the buildings comes from traditional southern and mountain retreat architecture.



THEvillage

THE PROGRAM

Program Elements | Log Buildings | **The Village Approach** | Safety & Security

- Clustered buildings to promote community feel and sense of place that are sited for security.
- Diverse age and gender population.
- Ropes course, chapel and camping platforms set apart from village to prevent interference with other programs.
- All buildings and facilities within easy walking distance of each other.
- Access to the village limited. Pedestrian and vehicular traffic separated.
- Recreational facilities abundant and diverse.
- Buildings nestled in a forest.

THEvillage



THE PROGRAM

Program Elements | Log Buildings | **The Village Approach** | Safety & Security



THEvillage

Produced by: The University of Georgia | College of Environment and Design | Public Service and Outreach



THE PROGRAM

Program Elements | Log Buildings | The Village Approach | **Safety & Security**



-  Year-round residency
-  Staff Cabins
-  Girls' Cabins
-  Boys' Cabins

THEvillage



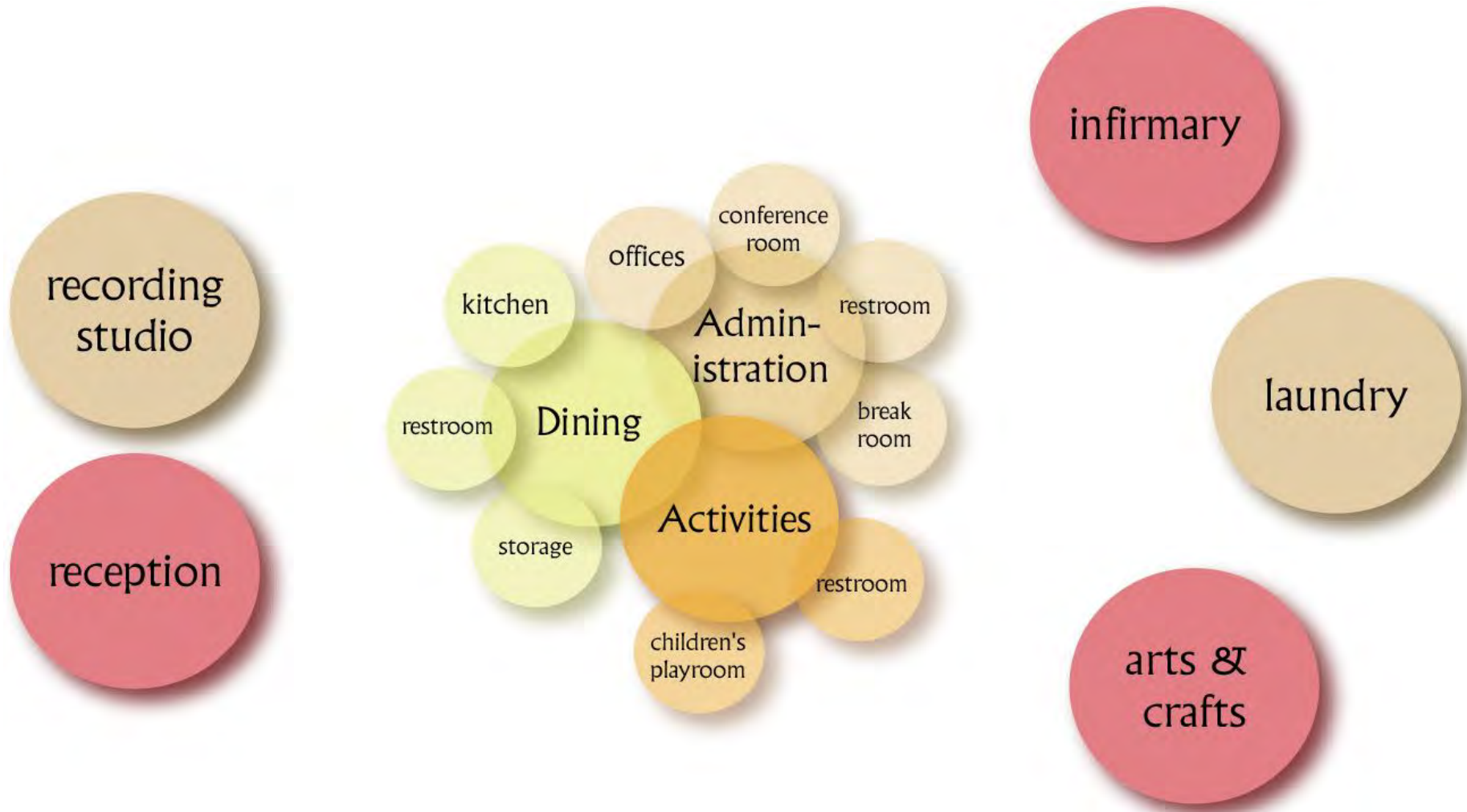
OUR APPROACH

1. Minimize ground disturbance
2. Heal the land
3. Protect the hardwoods
4. Blend buildings with surroundings
5. Cluster buildings around 600 ft. contour

Produced by:

The University of Georgia | College of Environment and Design | Public Service and Outreach

1 Minimize Ground Disturbance



THEvillage

1

Cluster Buildings



THEvillage

1

Grouping of activities: the Village Lodge

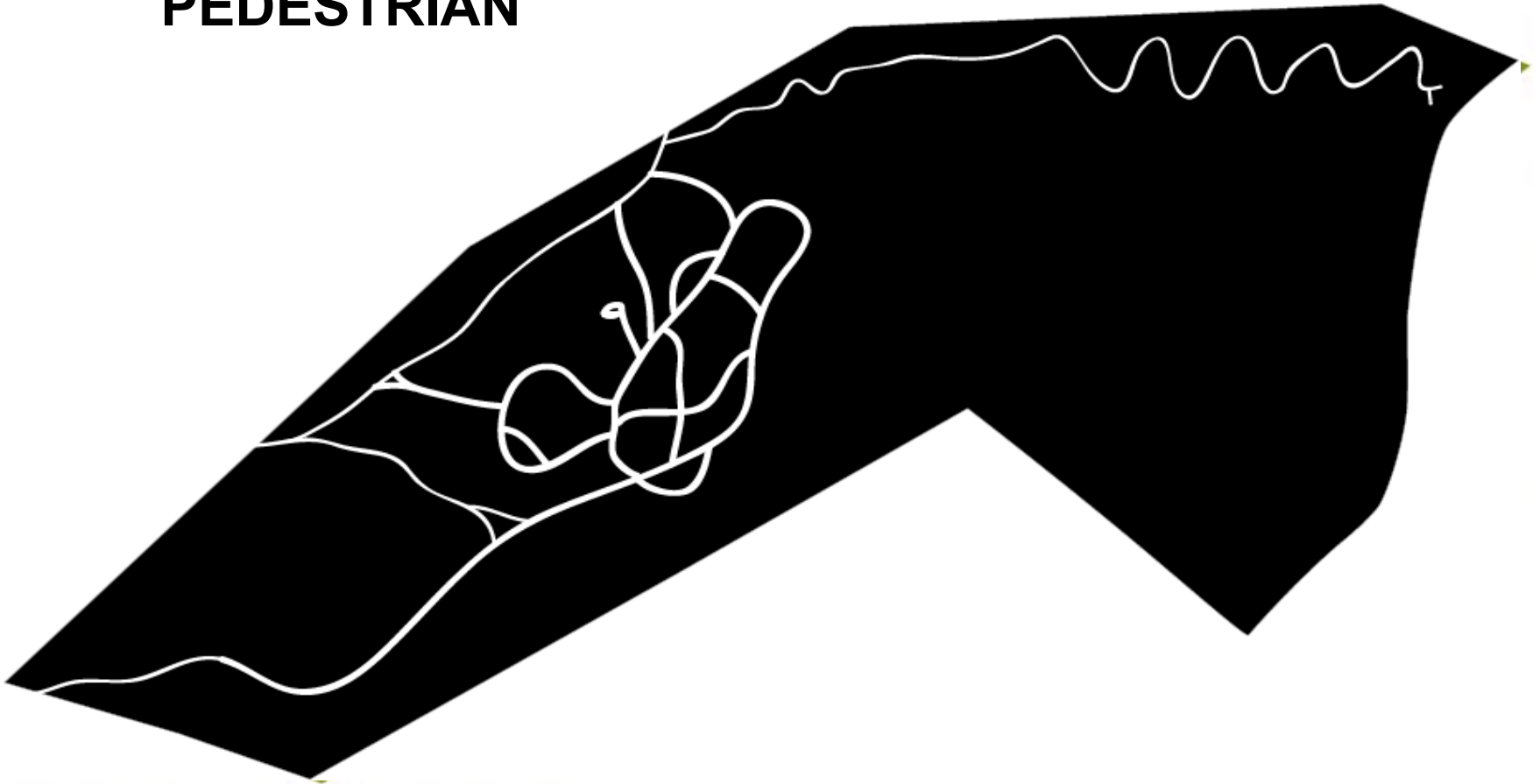


THEvillage

2 Heal the Land

Separation of vehicular and pedestrian activities

PEDESTRIAN



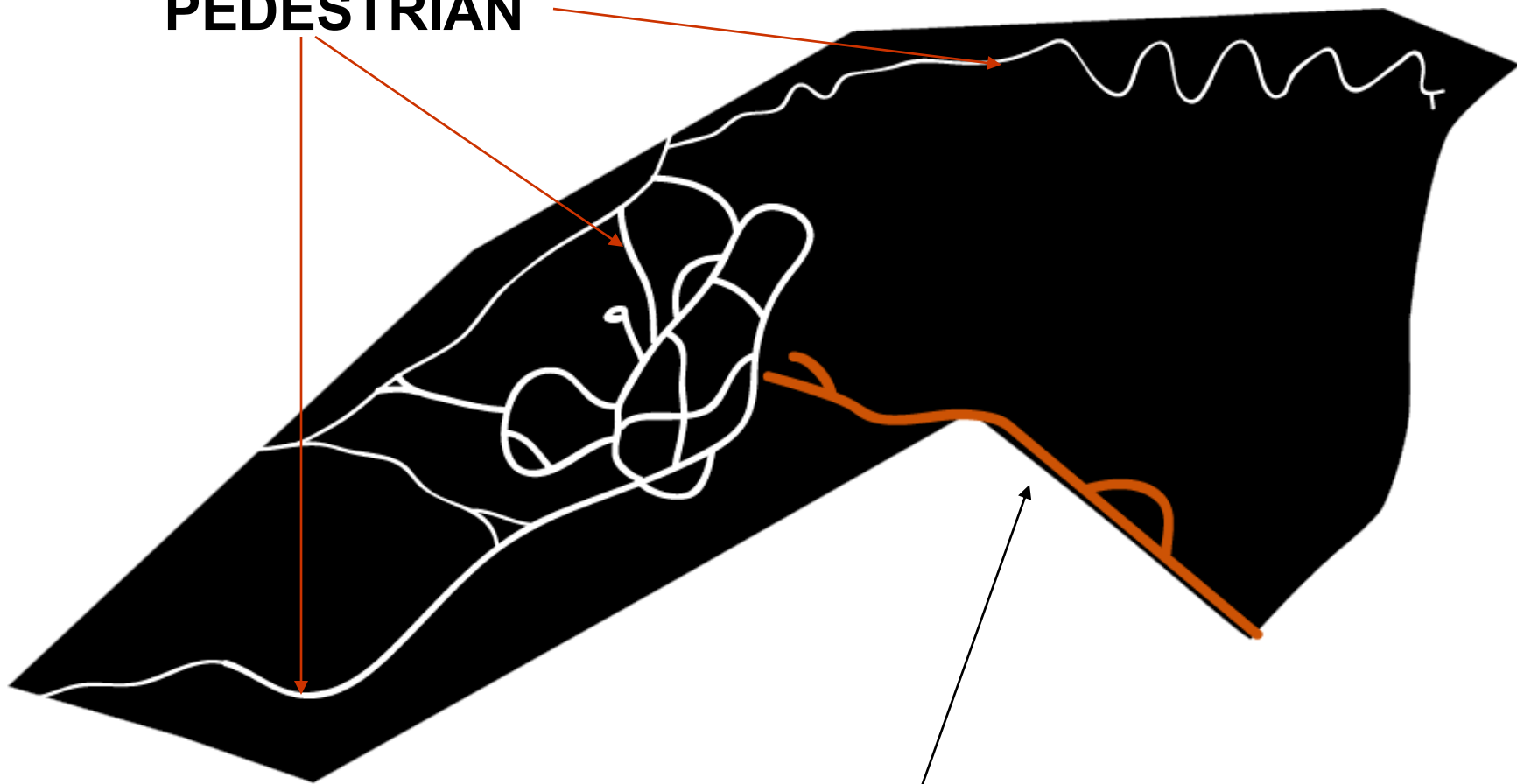
THEvillage



2 Heal the Land

Separation of vehicular and pedestrian activities

PEDESTRIAN

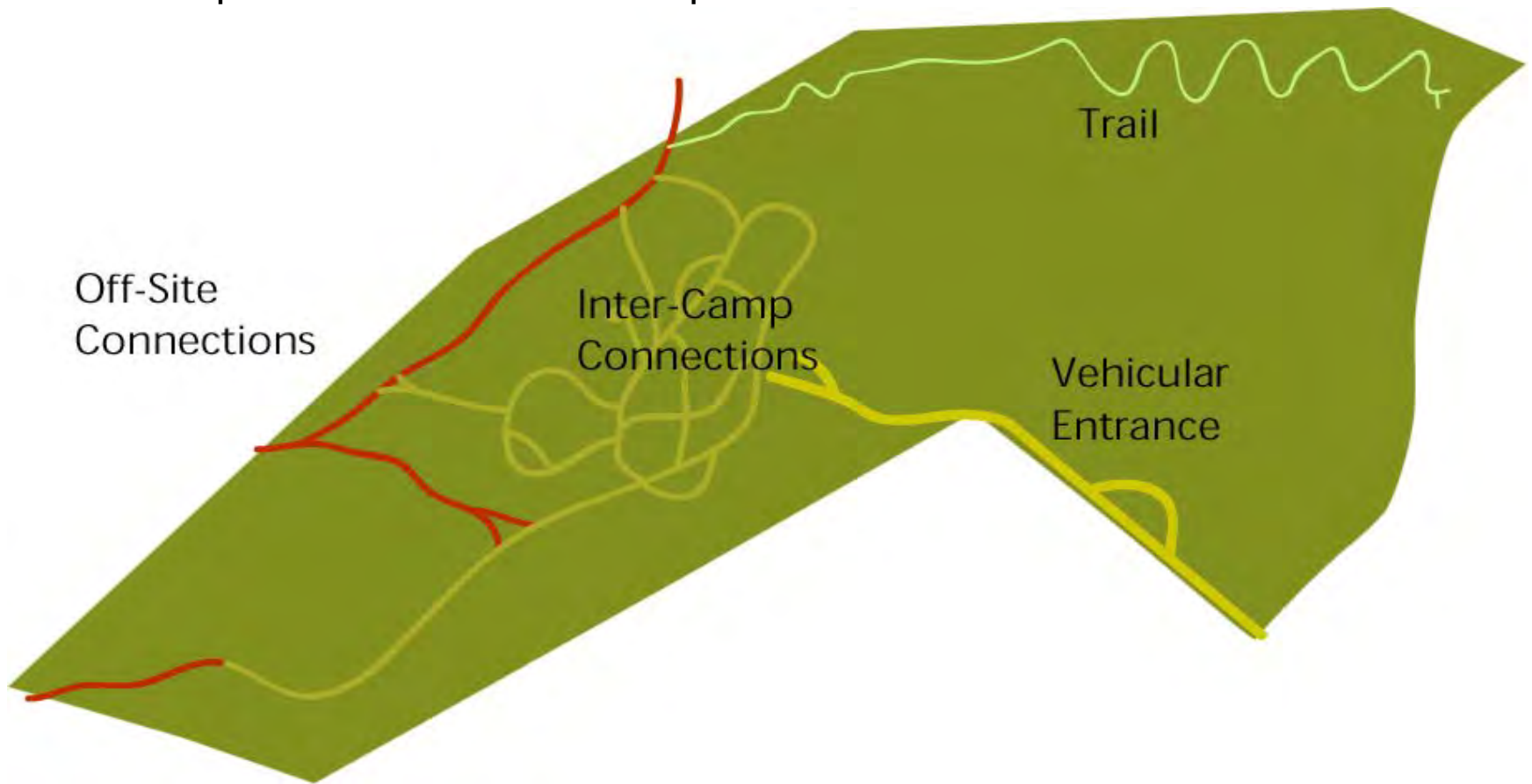


VEHICULAR

THEvillage

2 Heal the Land

Separation of vehicular and pedestrian activities

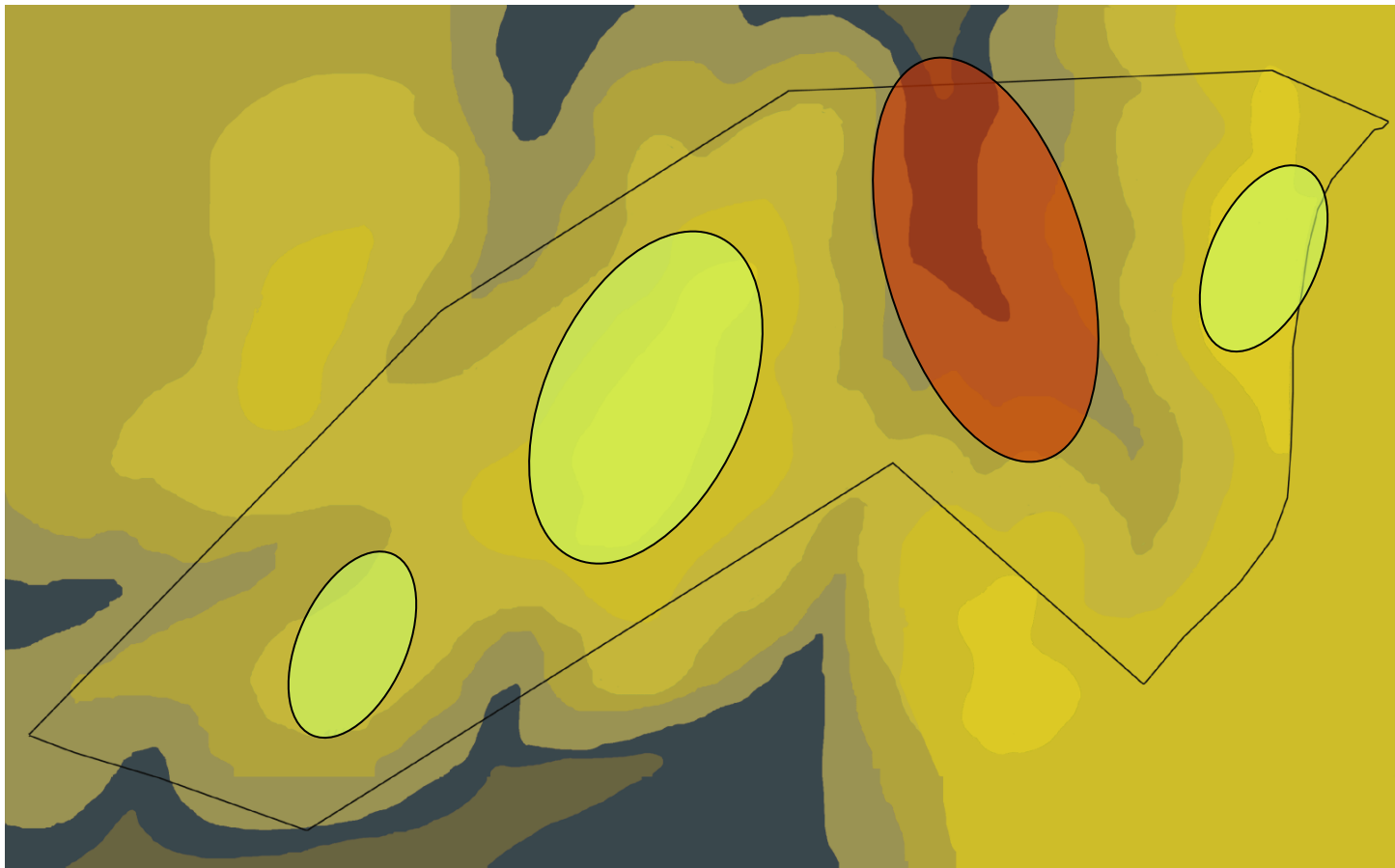


THEvillage



2 Heal the Land

Development activities on highest ground and **low impact development In fragile areas.**



THEvillage

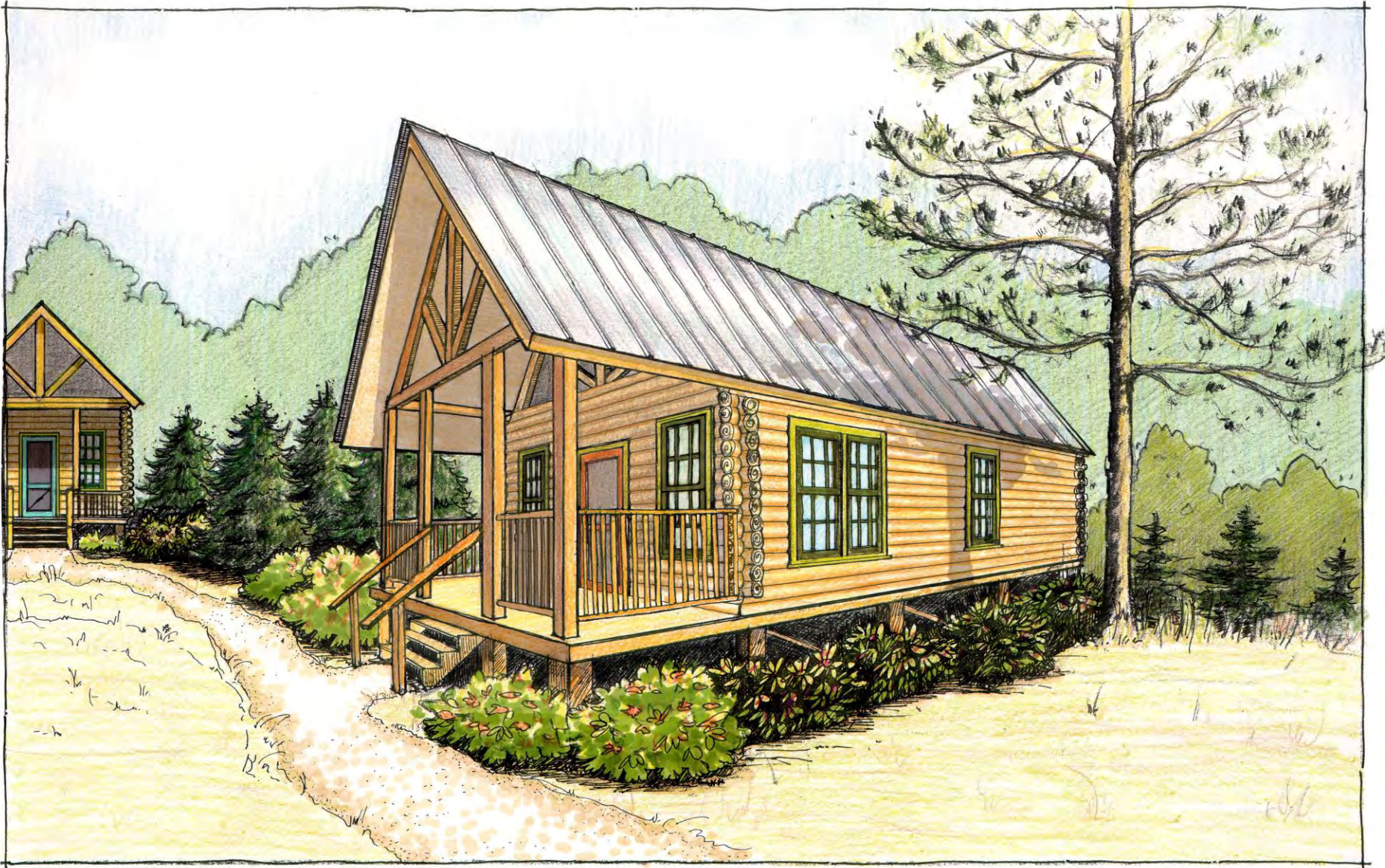
3 Protect Hardwoods

Root disturbance minimized by restricting construction activities under tree canopies.



4 Blend buildings with surroundings

A soft natural effect of buildings placed sensitively within the forest edge.



THEvillage

Produced by: The University of Georgia | College of Environment and Design | Public Service and Outreach



5

Cluster buildings around 600 ft. contour



THEvillage



Produced by: The University of Georgia | College of Environment and Design | Public Service and Outreach

Year-Round Residency

THEvillage Year-Round Residency Atlanta Children's Foundation



New cabins placed on the site

Cabins - Year-round residences

- EXTENSIVE:**
- Add social spaces to front facade by incorporating open kitchen/dining room
 - Consider two kitchen units on one level
 - Add play area and storage for toys
 - Use outdoor furniture on the porch
 - Add screens for legs, weather and to create privacy
 - Consider away supported legs for structural posts
 - Add an approach to house
 - Add a ramp and stairs to the porch
 - Use a ramp to the back porch

- INTERIOR:**
- Consider and quantity of local openings can be added
 - Add a night, morning and afternoon
 - Use a ramp to the back porch
 - Use a ramp to the back porch
 - Use a ramp to the back porch

- Use a ramp to the back porch
- Use a ramp to the back porch
- Use a ramp to the back porch
- Use a ramp to the back porch
- Use a ramp to the back porch

This new approach is most appropriate to incorporate a new design. Consider a new design for the house and the porch. Consider a new design for the house and the porch. Consider a new design for the house and the porch.



Front view (proposal)



Side view (proposal)

Produced by: The University of Georgia • College of Environment and Design • Public Service and Outreach • June 2003

THEvillage





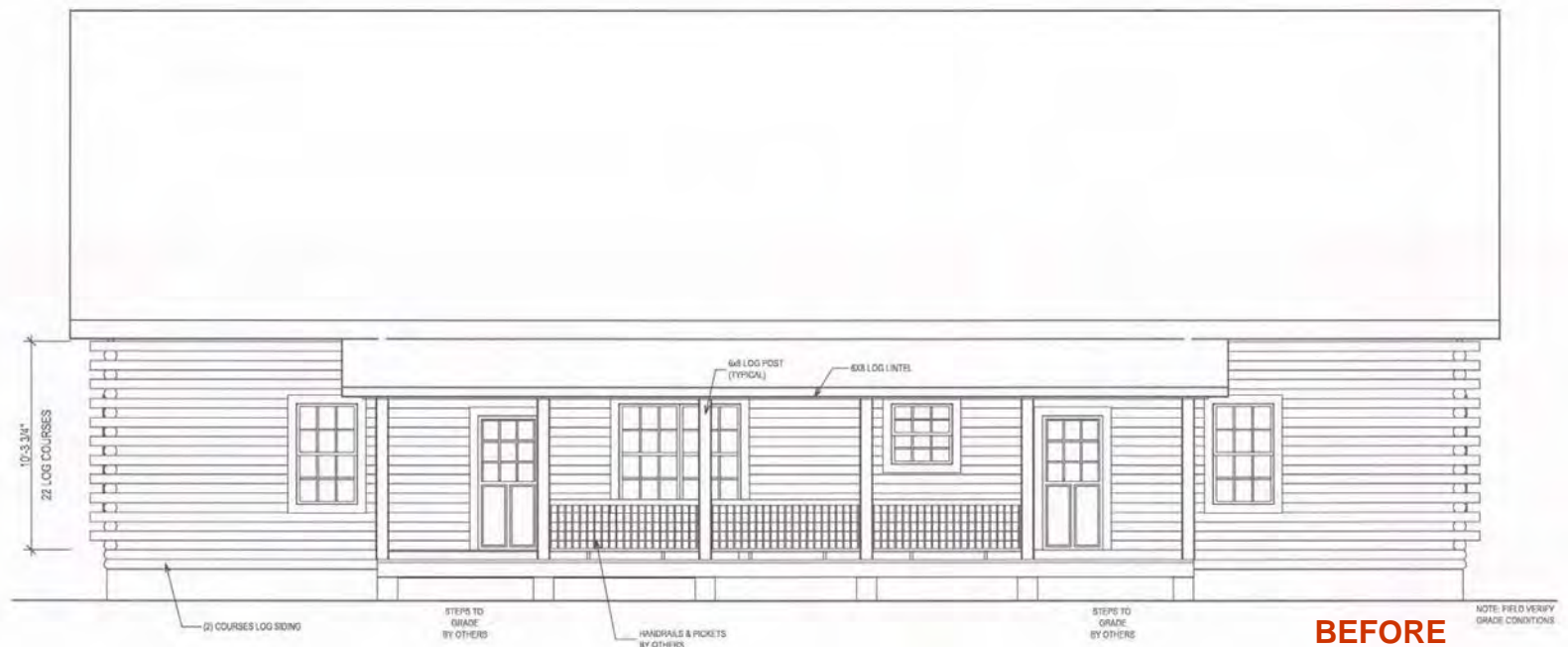
THE solution

YEAR-ROUND RESIDENTIAL

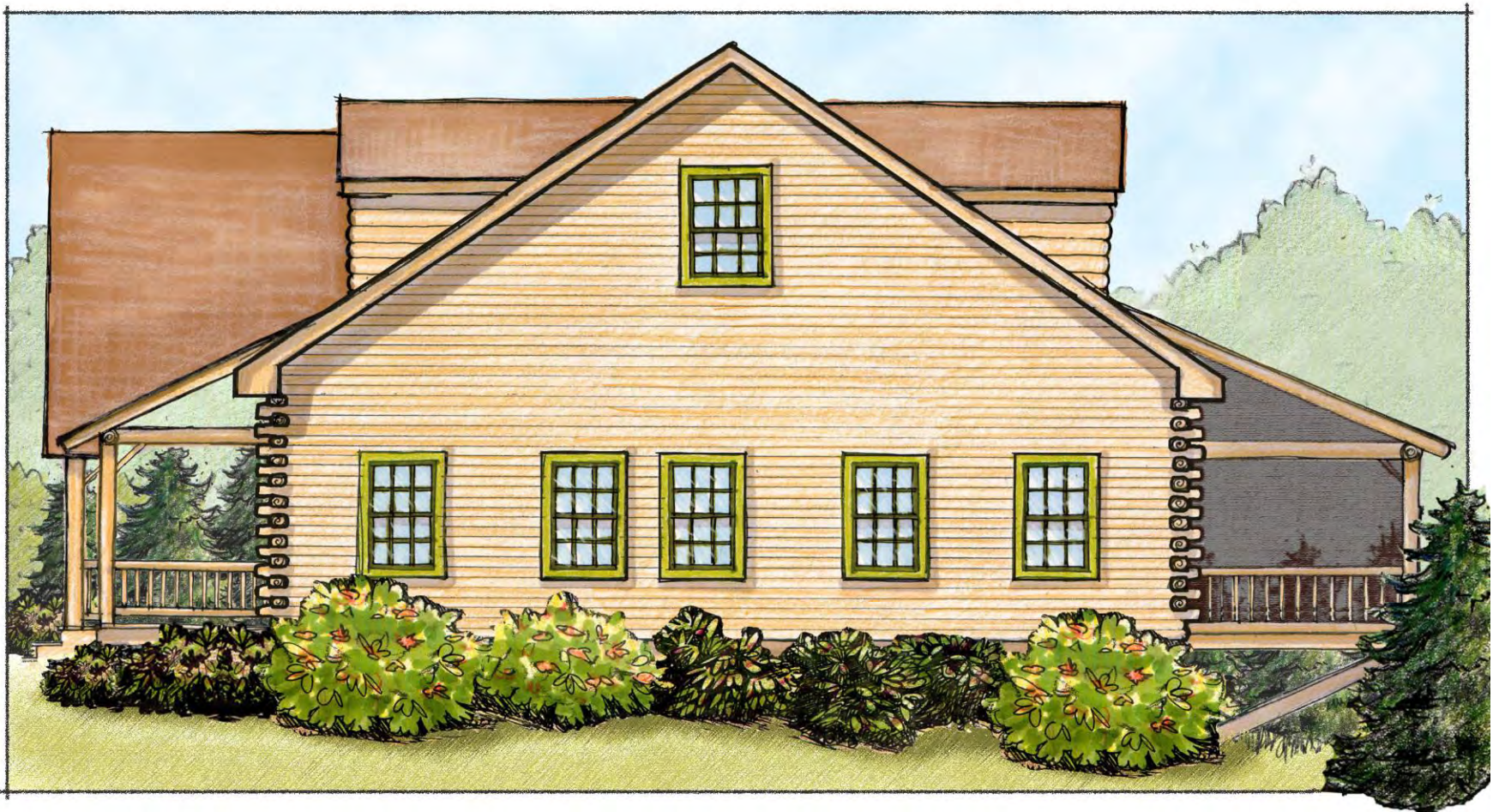




AFTER



BEFORE



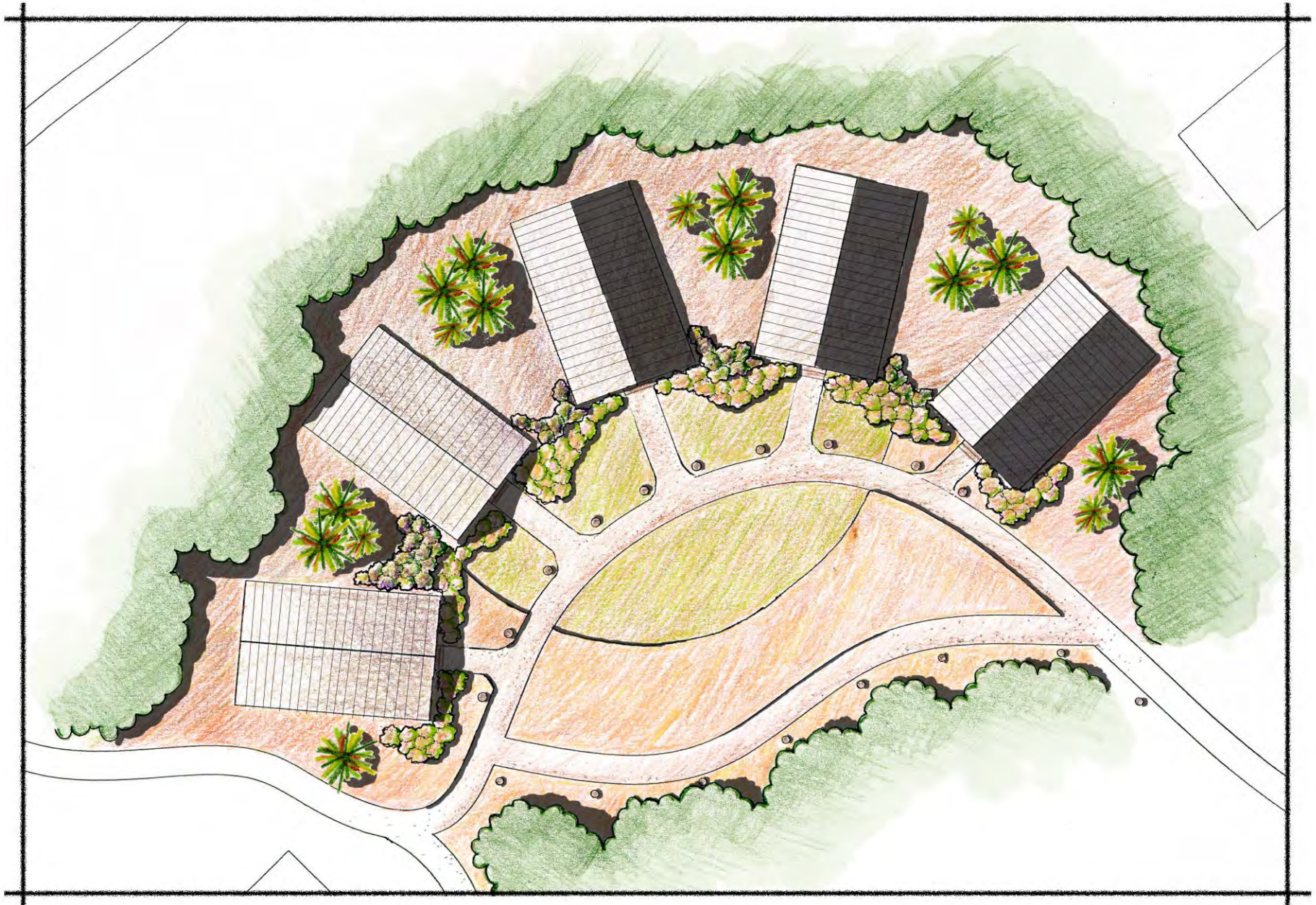
THEvillage

Produced by: The University of Georgia | College of Environment and Design | Public Service and Outreach





SEASONAL CABINS





THE solution

SEASONAL CABINS



THEvillage

Produced by: The University of Georgia | College of Environment and Design | Public Service and Outreach





THEsolution

SUGGESTED LAYOUT



THEvillage



THE VILLAGE LODGE

Atlanta Children's Foundation

THEvillage resources



View of the Administration/Dining/Activities Building



View of the Recording Studio and Village Reception



Layout of activities



Produced by: The University of Georgia | College of Environment and Design | Public Service and Outreach • June 2003

THEvillage





THEsolution

The Village Lodge



An illustration showing four people in a meeting. A woman on the left is looking towards the center. In the background, another woman is talking on a mobile phone. A man in the center is looking at a laptop. On the right, a man is looking towards the center. The scene is set in an office or meeting room with bookshelves in the background.

THEsolution

The Village Lodge

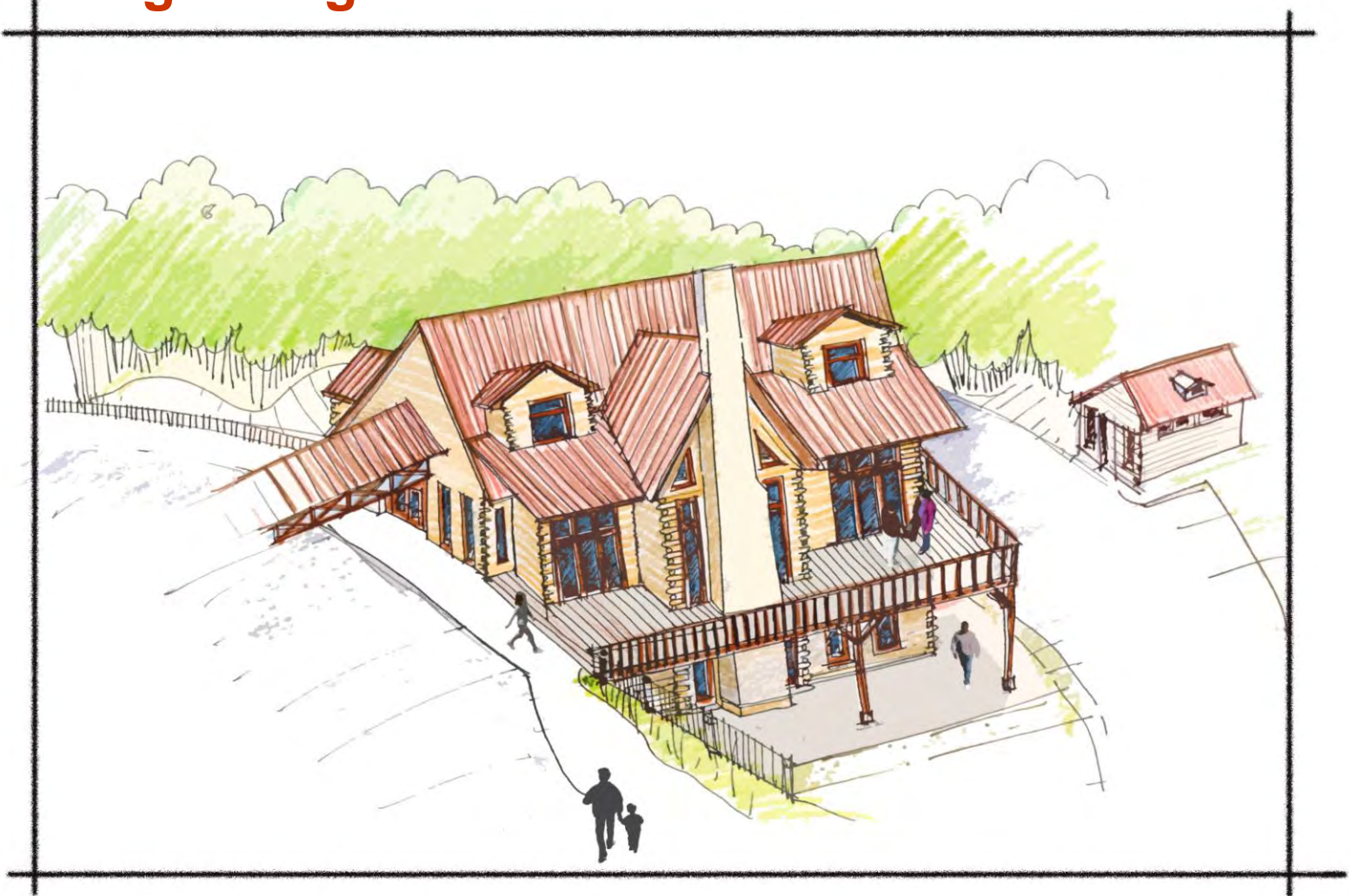


THEvillage



THEsolution

The Village Lodge



THEvillage

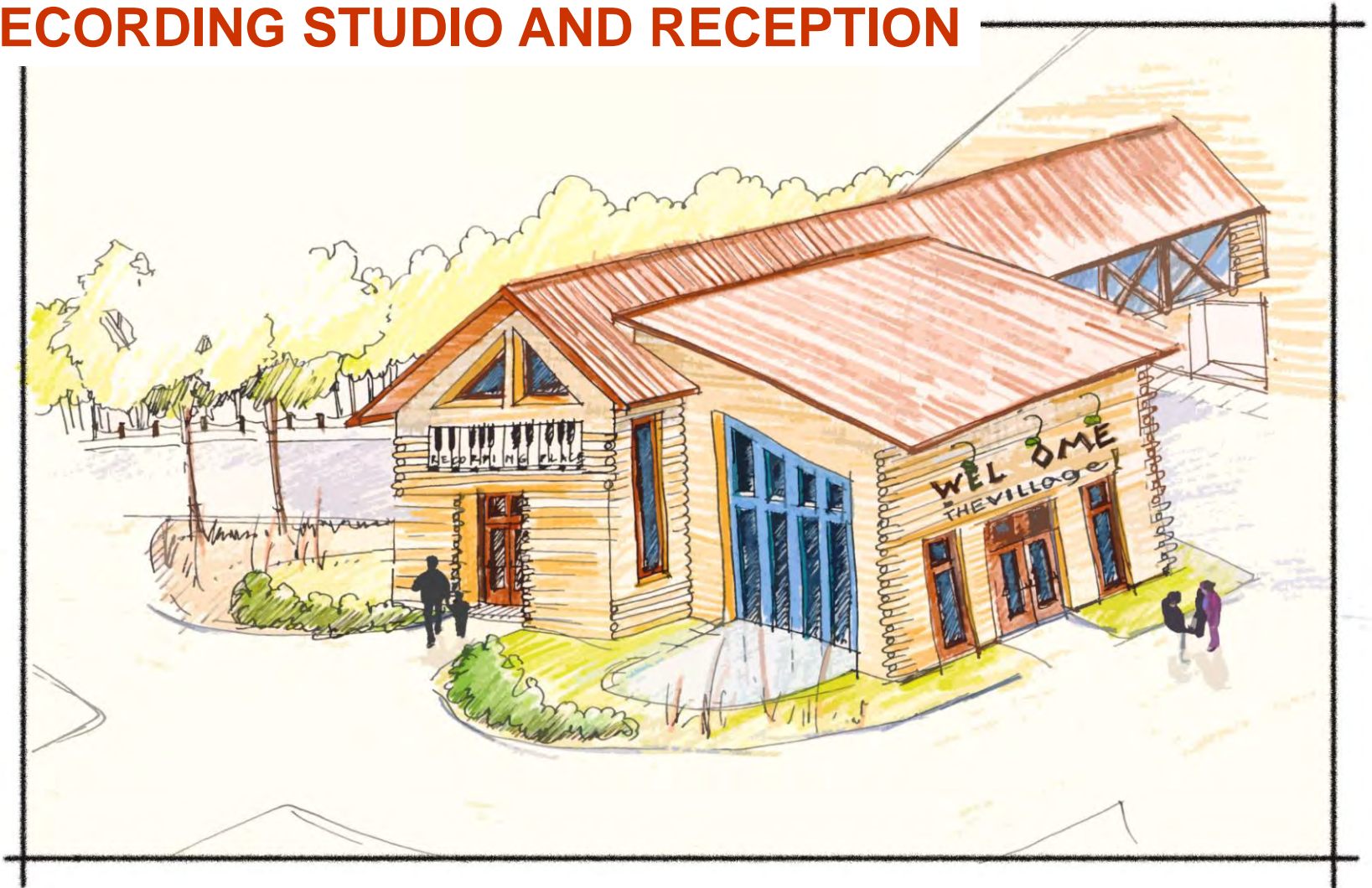
Produced by: The University of Georgia | College of Environment and Design | Public Service and Outreach





THEsolution

RECORDING STUDIO AND RECEPTION



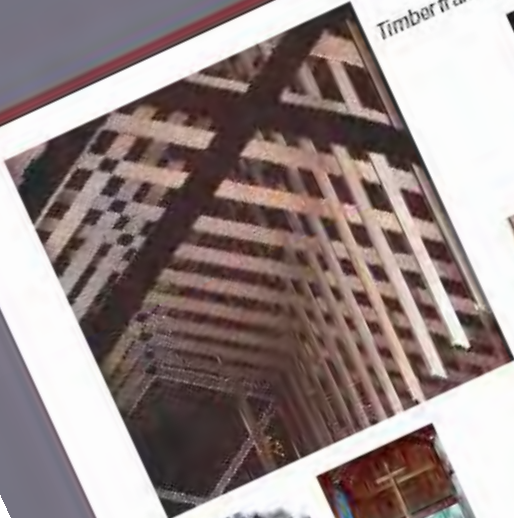
THEvillage



Chapel Ideas

THEvillage Chapel Ideas Atlanta Children's Foundation

Timber framed construction



Closely related to traditional agricultural buildings



Bring the outdoors in making it a sanctuary in the forest



Take advantage of natural light.



Design guidance should be taken from the ecclesiastical works of the architect E. Fay Jones.

Produced by: The University of Georgia • College of Environment and Design • Public Service and Outreach • June 2003

THEvillage





THEvillage

Produced by: The University of Georgia | College of Environment and Design | Public Service and Outreach





THEvillage



Produced by: The University of Georgia | College of Environment and Design | Public Service and Outreach



THE CHAPEL

THEvillage



THEvillage

INFORMATION AT THE VILLAGE -- A LEARNING TOOL



THEvillage



entrance sign

THEvillage



THEvillage

Atlanta Children's Foundation

Welcome to the Village!
Find your Camp site on the map
below and follow the directions!

We are glad you are here!



sign at

THEvillage



THEsolution

THEvillage
staff cabins
→

1. american elm
2. slippery elm
3. winged elm



ELM circle



Staff Cabins (Elm Circle)

THEvillage





THEvillage



1. longleaf pine
2. shortleaf pine
3. loblolly pine
4. yellow pine
5. ponderosa pine



PINE court



THEvillage



1. chalk maple
2. red maple
3. sugar maple
4. trident maple
5. paperbark maple



MAPLE court

THEvillage



THEsolution

THEvillage



1. southern magnolia
2. saucer magnolia
3. star magnolia
4. bigleaf magnolia
5. umbrella magnolia



MAGNOLIA place

THEvillage



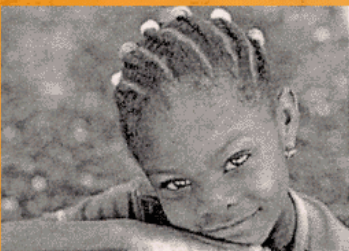
1. Oconee
2. Piedmont
3. Sweet
4. Cumberland
5. Flame



AZALEA place



THEvillage



THEvillage

**This is not the end,
it's Just the beginning!**