



College of Environment + Design
UNIVERSITY OF GEORGIA

CFIT DESIGN PROPOSAL
LAND 4900/6901 | SUMMER 2020
PROF. DONNIE LONGENECKER

CREDITS

BLA STUDENTS

Frances Arnall
Devin Butler
Macon Chapman
Yawn Deng
Jonathan Diaddigo
Olivia Dinges
Hannah Fisher
Ashleigh Keaney
Calvin Kom
Caroline Long
Braden Meadows
Serena Metropol
Natalie Minor
Elias Payne
Jairus Romano
Anna Marie Scoccimaro
Mackenzie Tobin
Aubrey Whitehead
Hiyam Yacout

CED FACULTY

Donnie Longenecker, Senior Lecturer

VENDORS/SUPPLIERS

Ken Erdoes, Playground Creations and
ADS Reps
Brian Had, The Fountain People

CFIT MEMBERS

Chris McMichael
Pam Walker
Phillip Gossling
Lynn Stevens
Debi Krause
Douglas Mitchell
Shawn Williams
Lee Bane
Julia Simpson
Joe Perno
Kendall Dutton
Ben McDaniel



LEGEND & NOTES

NOTES

The CFIT playground is a program element in the SDCA master plan for the CFIT campus. A senior level landscape architecture studio was tasked with developing concepts to align with project goals. The following pages present results from this studio and also probable costs based upon discussions with suppliers and vendors. The master plan attempts to address all the desired program elements as expressed by the CFIT team. After reviewing several different site plans developed by the class, the CFIT team settled on a wheel and spoke arrangement of spaces in the playground area. A destination playground and water feature are the central focus of the park. The water feature winds its way through the playground and terminates into a central interactive fountain. Pavilions surround the central fountain providing shade and gathering spaces for users. Rooflines and details on the pavilions mimic a railroad depot, referencing Winder's long relationship with the railroad. Sport courts are placed north of the water feature. A food truck cul de sac is adjacent to Midland avenue, providing easy access for food trucks without disturbing the inner workings of the space. Ample open space with tables and hammock poles provide room for park users to enjoy the food served by the food truck vendors.

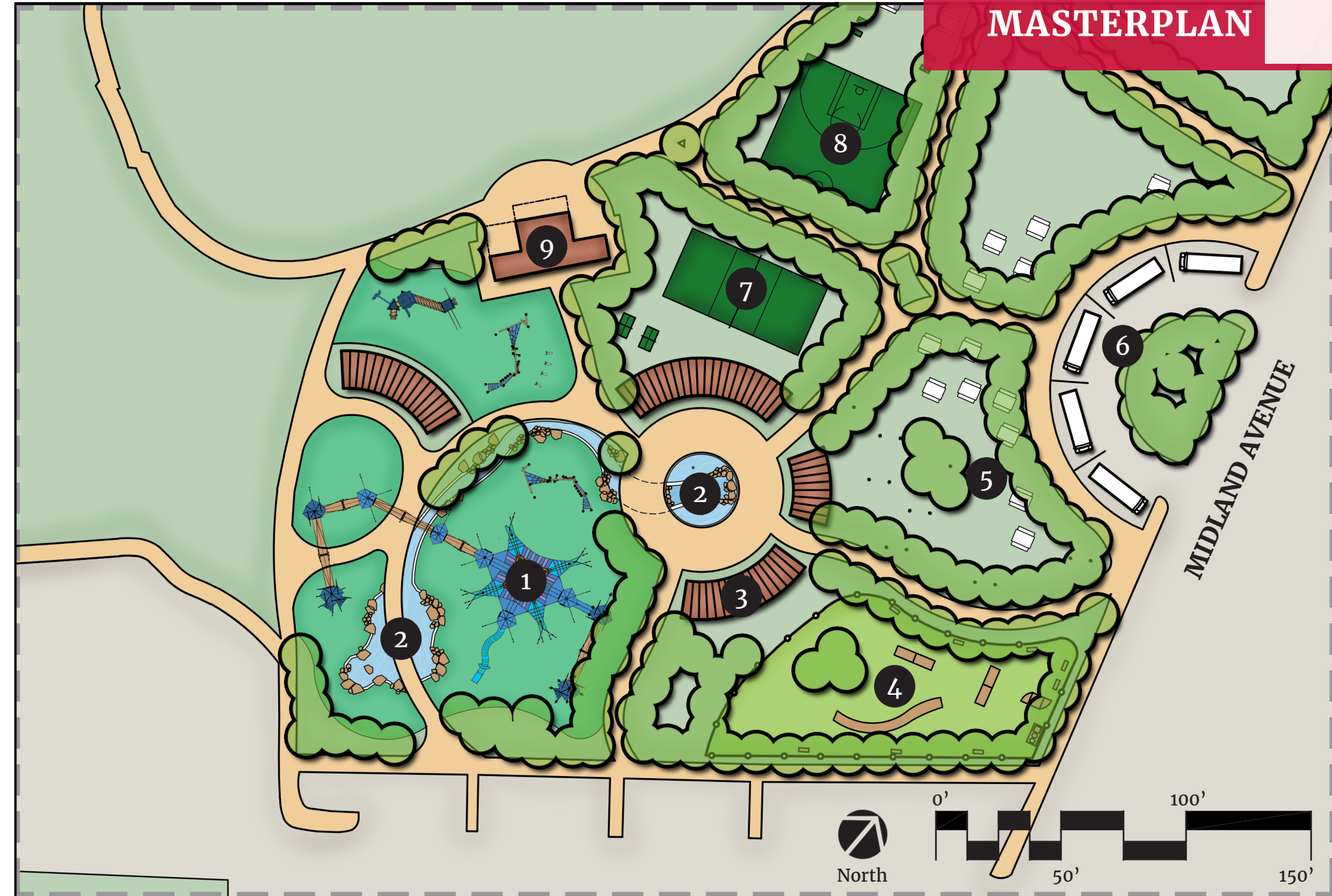
KEY

- 1 PLAYGROUND
- 2 SPLASHPAD & WATER FEATURE
- 3 PAVILIONS
- 4 DOG PARK
- 5 OPEN SPACE/HAMMOCK AREAS
- 6 FOOD TRUCKS
- 7 VOLLEYBALL COURT
- 8 HALF-COURT BASKETBALL
- 9 EXISTING STRUCTURE
- 10 Label

CONTEXT

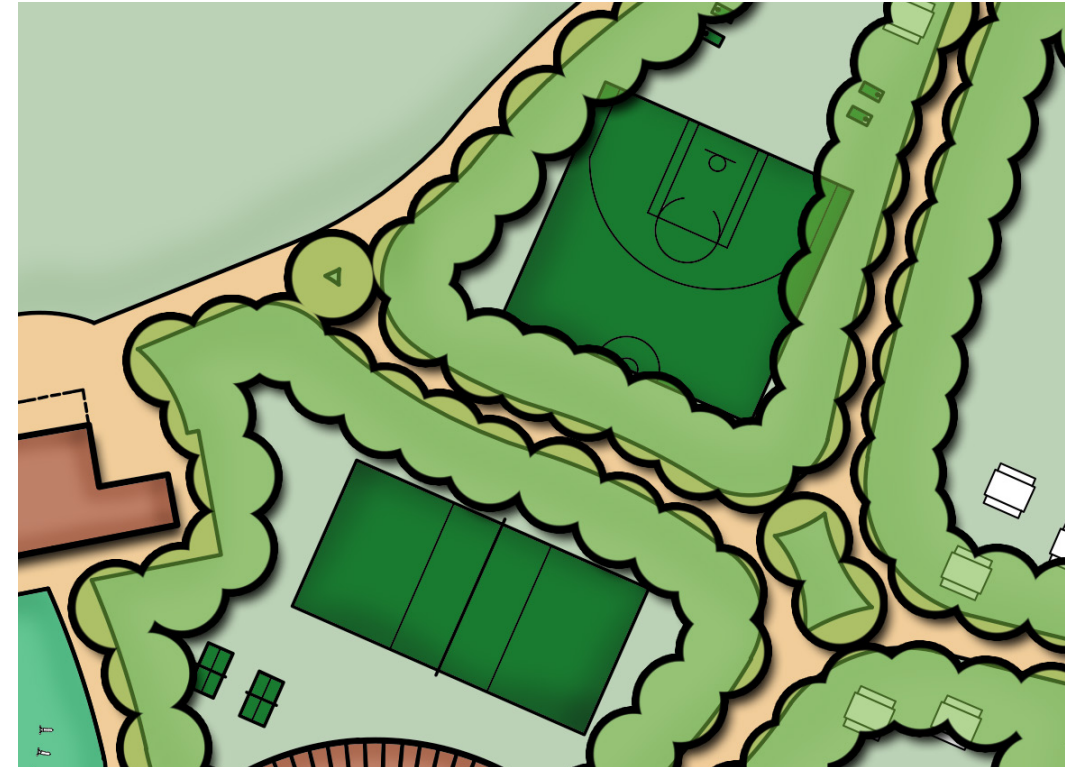
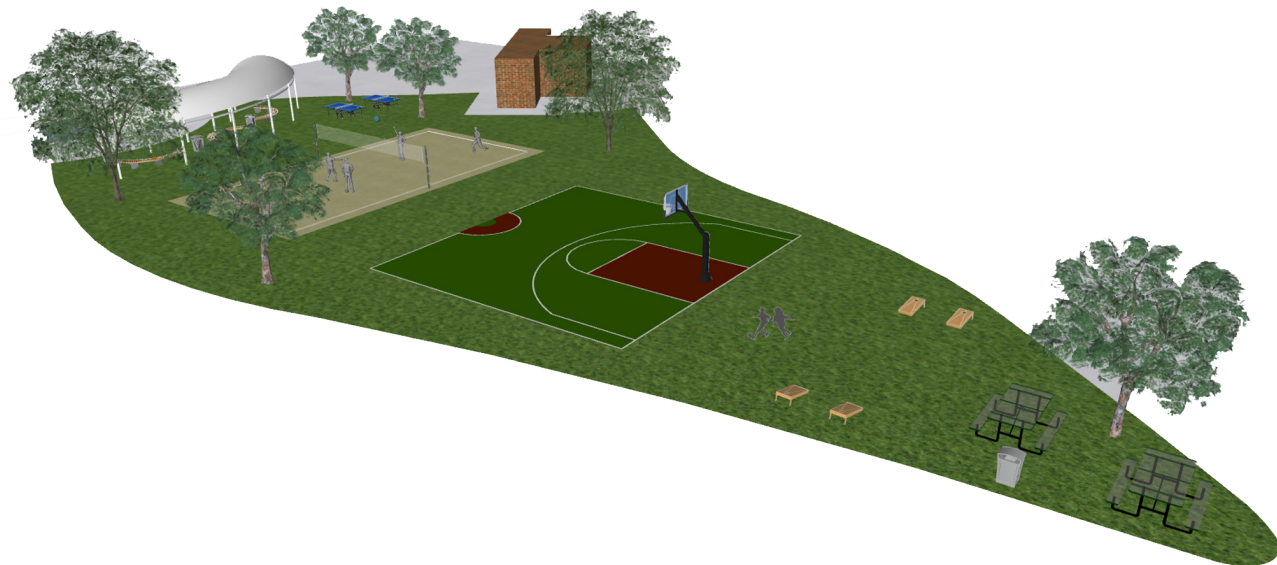
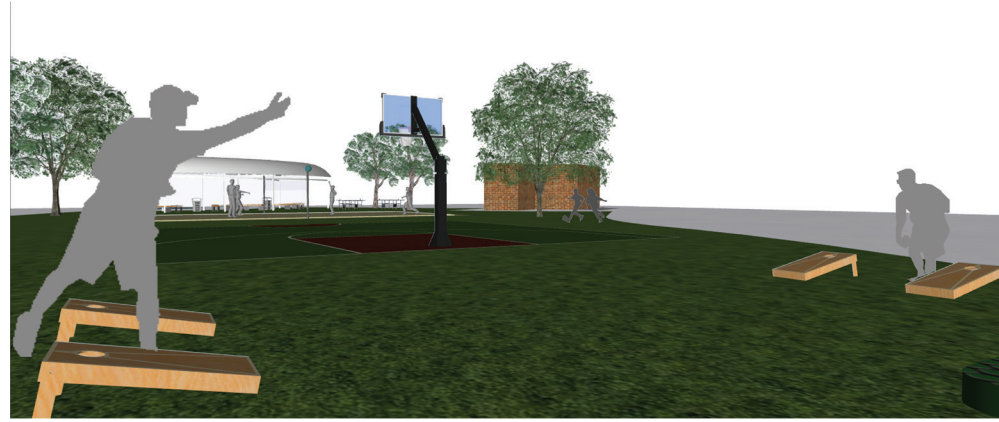


MASTERPLAN



SPORTS COURTS

Our final design for the CFIT masterplan incorporates sports courts into the heart of the park. Strategically positioned between the field house and the food trucks, it is a major hub of energy and activity. A volleyball court at the southern end provides users of the park the opportunity to congregate and play. Above that lies a half-court basketball/sports court. Halving the full length of a traditional basketball court enabled us to implement this multipurpose area for the enjoyment of park goers of all ages. Picnic tables at the northern end provide places to eat and relax while you take in the energy of the park. All around this space are small areas dedicated to non-traditional games that will provide a big draw to this recreational area. Too hot for an intensive game of volleyball? Instead, play a game of corn-hole in the shade or engage in a friendly game of ping pong. These multi-purpose, flexible spaces also allow for the potential future expansion of sport courts. This recreational area of this park provides a little something for everyone to express themselves, whether it be physically or just to simply relax and enjoy watching an active community.

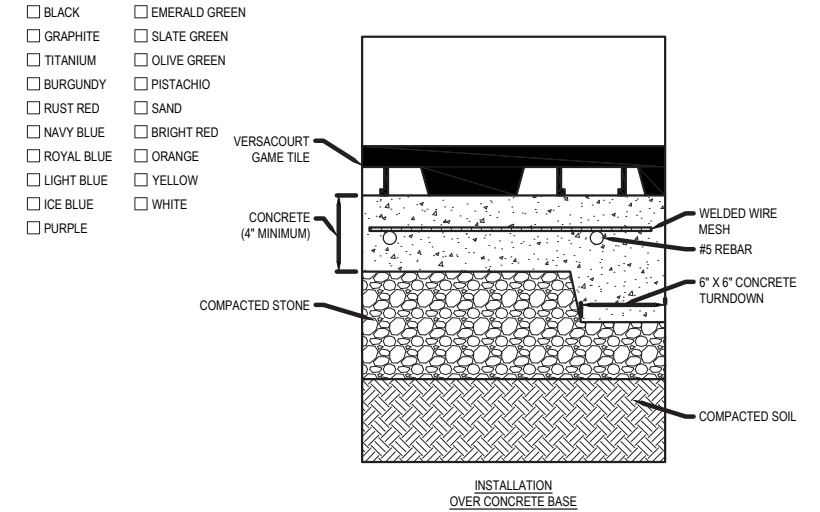


OPINION OF PROBABLE COST

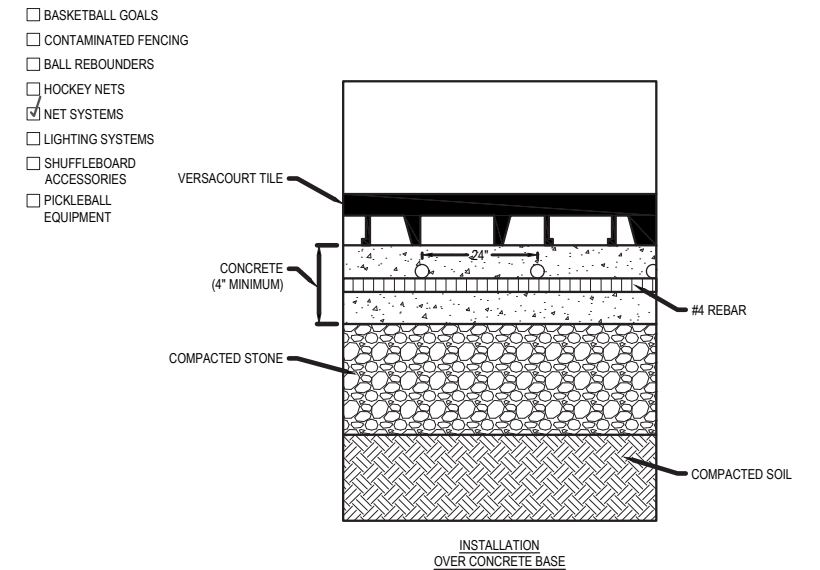
Basketball Court (2350 SF)	\$10,575
Volleyball Court (1740 SF)	\$7,830
Ping Pong Tables (2)	\$800
Corn Hole	\$480
Tables (2)	\$1,650
Benches (3)	\$3,600
Trash Cans (3)	\$1,110

TOTAL **\$26,045**

DETAILS



1 VERSACOURT® TILE
VERSACOURT® GAME TILE - INSTALLATION OVER CONCRETE BASE



2 VERSACOURT® TILE
VERSACOURT® COURT TILE SYSTEM

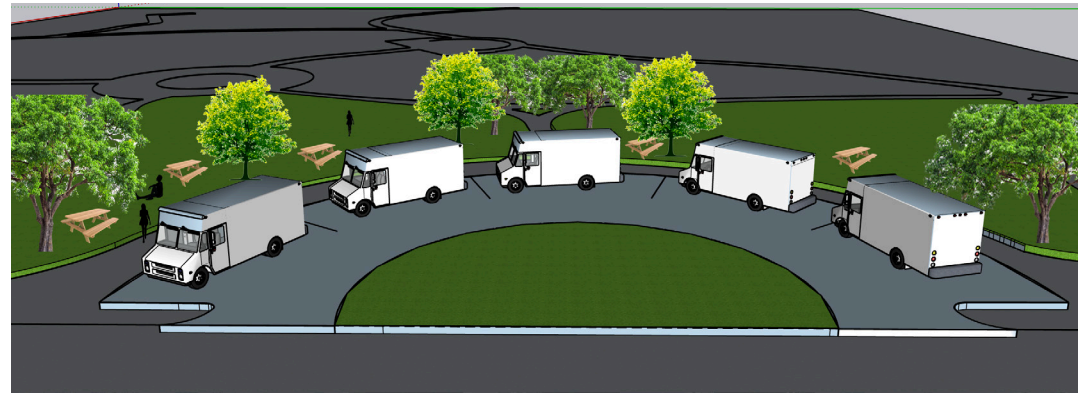
FOOD TRUCKS

The food truck circle allows vendors to line up their trucks in an orderly fashion without the hassle of parallel parking. Vendors may leave in a caravan at the end of the day or leave separately by turning into the inner radii of the circle to exit onto the street. Outside of the vendor parking spaces is a 10 foot walk way that encircles one side of vendor trucks for pedestrian traffic. Trees are between parking spaces to create a natural landscape nudge for customers to form separate lines for each vendor. Outside of the walkway are more trees to provide shade for seating. Seating has a multi-functional purpose because this area intersects the food truck circle and the dog park.

OPINION OF PROBABLE COST

3" Asphalt Parking Lot w/
6" base and lighting \$11,185

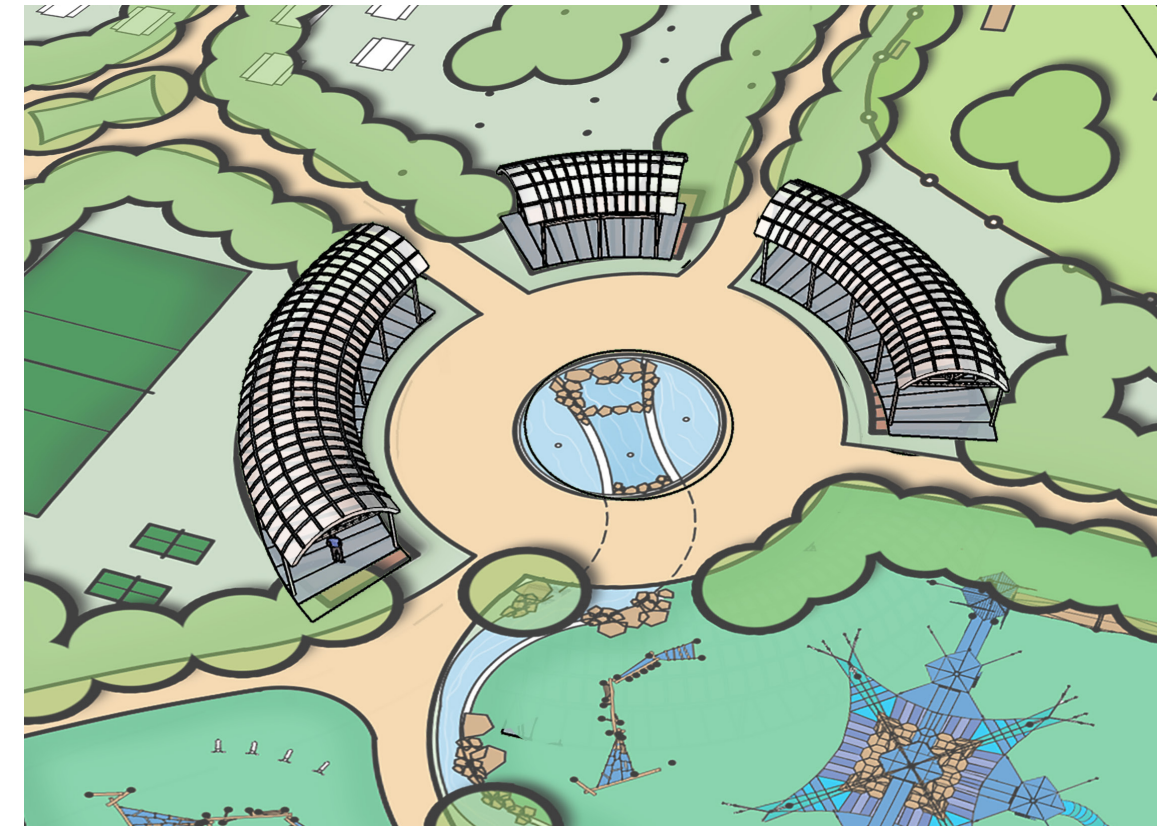
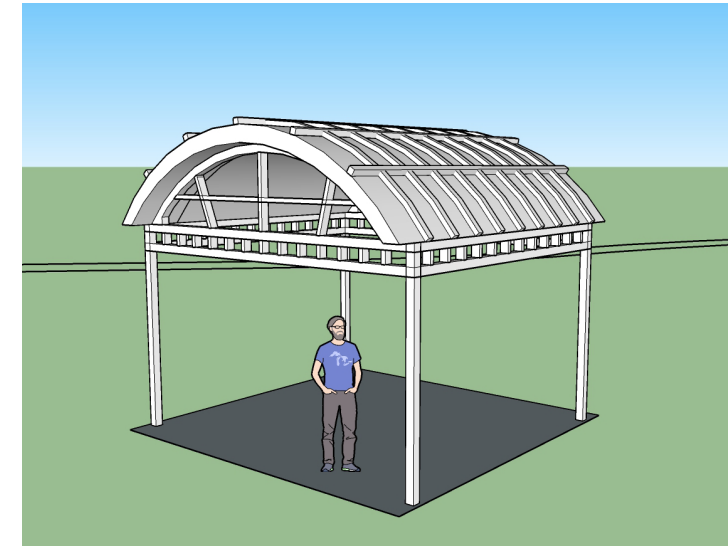
TOTAL \$11,185



VIEW OF FOOD TRUCK COURT FROM MIDLAND AVENUE



VIEW OF FOOD TRUCK COURT FROM INSIDE PARK



PAVILION

In 1893, the town of Winder changed its name to honor John H. Winder. He managed the Seaboard Air Line which was the railroad line that ran through the town. Because the railway was such a big part of Winder's history, we wanted to incorporate it into our design for CFIT. The best way we found to do that was with the pavilions. We created pavilions that bring you back in time to the time of the Seaboard Air Line. The "Old Time Train Depot" look of the pavilions helps to keep the history of Winder alive. Not only do they provide shade for patrons of the park but also a place to relax and take in the park around them. The central pavilions surround a natural water feature giving the space a central hub. The same style pavilions are scattered throughout the site to not only provide shade throughout the space but to also tie the design together and bring emphasis to the educational aspects of the park and the railroads of Winder's past.

OPINION OF PROBABLE COST

45' Shade Structure (2) (CUSTOM BV15X209) \$300,000
 44' Pavillion (2) (CUSTOM BV15X123) \$225,000
****Non-Custom Pavillion (4) (BV15X15G) \$80,000**

TOTAL \$525,000

**Pricing from Playground Creations*

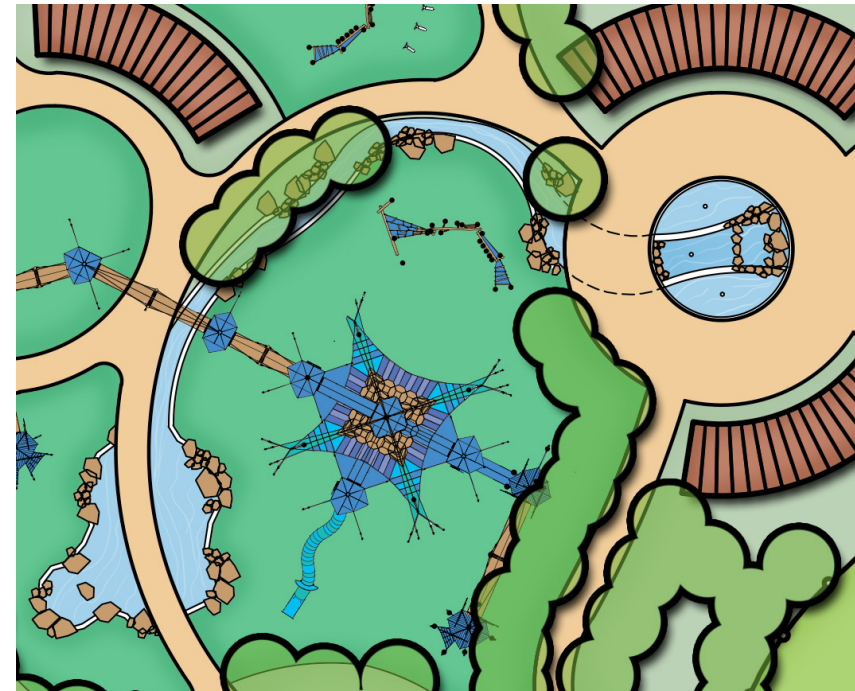
SPLASH PAD

This water feature combines elements of a typical splash pad with a naturalistic fountain to create a unique and picturesque design feature. An important part of the design was including boulders and rocks to keep the natural style cohesive throughout the park. With inspiration from the Chattanooga Aquarium, which is a widely popular destination, the water feature took on a large footprint to encompass a meandering section of the park. We hope that children of all ages and abilities all able to enjoy this exceptional space.



OPINION OF PROBABLE COST

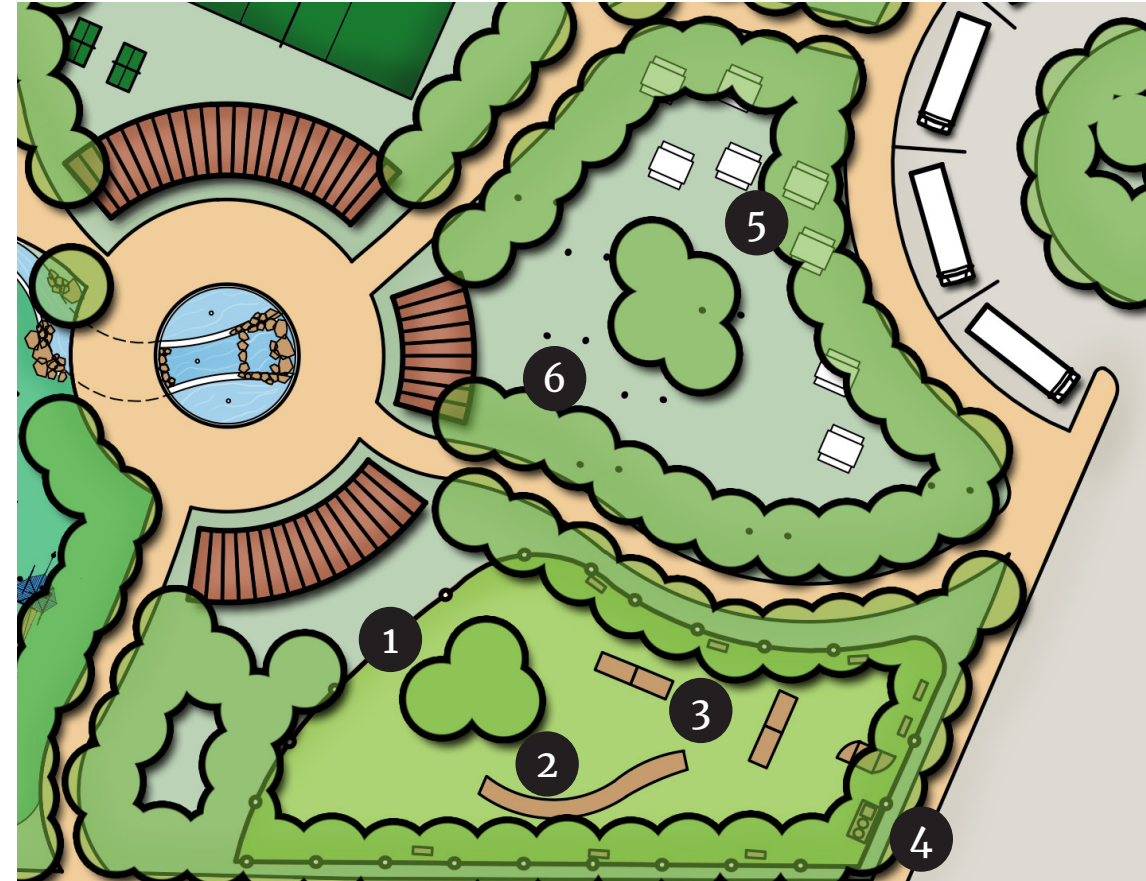
Fountain Equipment	\$95,000
Fountain Piping & Installation	\$75,000
Construction of Water Feature	\$135,000
TOTAL	\$305,000



DOG PARK

The dog park welcomes dogs of all sizes to run and play safely in a fenced enclosure. This area has instant access from the parking lot to aid in the convenience and safety to park users. The dog park is furnished with obstacle course equipment and a drinking fountain. Owners can sit on nearby benches situated on the perimeter of the park.

The hammock and picnic area border the food truck roundabout. This close access provides park users with convenience to seating. Shade trees and nearby pavilions allow users to cool off while continuing to use the space. Hammock poles are situated amongst the shade trees for users to relax in nature.

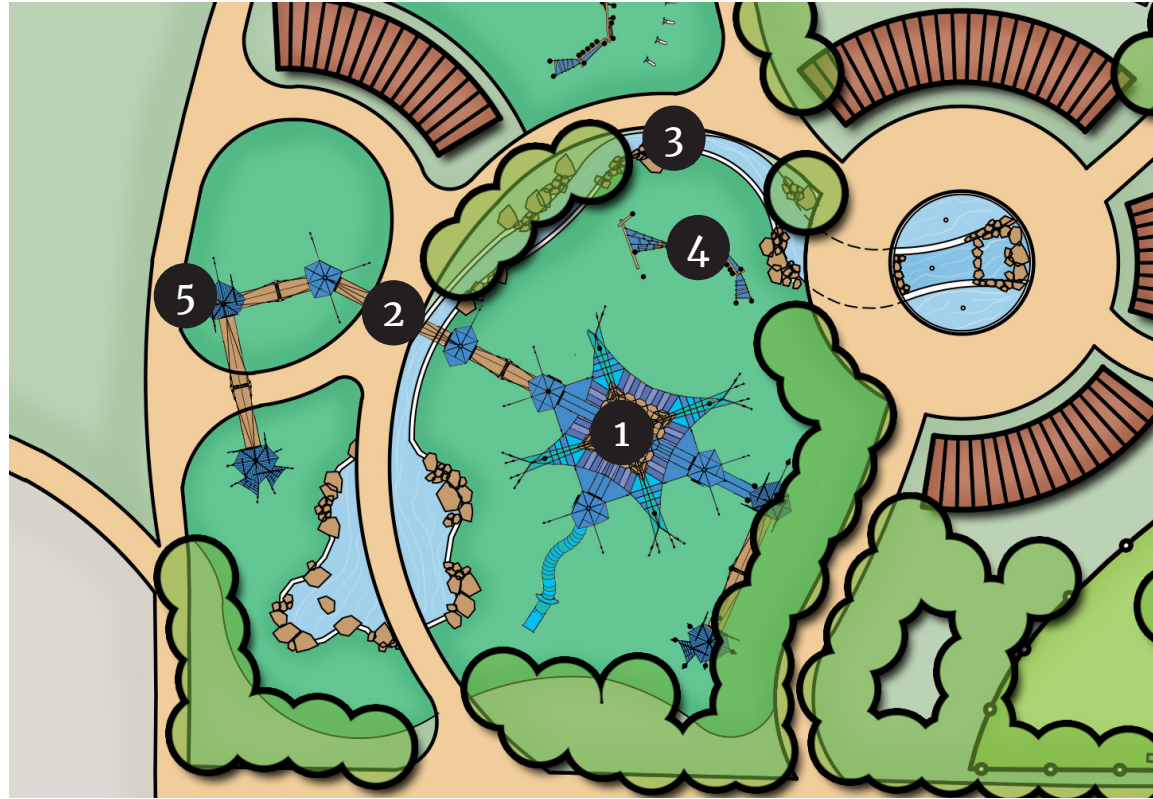


OPINION OF PROBABLE COST

#1 - Fence	\$24,310
Gate	\$1,060
Waste Container	\$932
Bench	\$4,926
#2 - Dog Tunnel	\$1,210
#3 - Walking Ramp	\$3,740
#4 - Water Fountain	\$3,913
#5 - Picnic Table	\$9,075
#6 - Hammock Post	\$775.80
TOTAL	\$49,942

PLAYGROUND

A key component in any child's developmental learning is play. Learning devoid of elements of play and adventure is deprived of its richness. That is why a key component of the new Center for Innovative Learning Campus is its exceptional playground. The concept for this playground came from a conversation had with a group of small children ages 6-8. When asked what they would do if they had unlimited resources and could design their own playground, their answers knew no bounds. They were shooting for the moon with their ideas...literally. They wanted a playground in the sky where no adults could come. They wanted a place built just for them. From this came the concept of net scales and aerial play. Imagine walking into the park as a kid. Hand and hand with your parent on the sidewalk as you entered, and up above you among the branches and trees there are other children climbing in and out of nets and tunnels above your head. These tunnels and bridges of nets all connect to towers and slides tucked back into groves of trees and nature. The playgrounds home base is a series of towers and climbing structures centrally located in the play area. The playscape elements are made entirely of natural materials so it looks as if the playground simply grew up out of the ground and meshed with the tree canopy above you. As a kid, this would have been irresistible me. If you have little kids that might not quite be old enough to climb and explore the world from a birds eye view, there is a play area for smaller children as well. This area is complete with its own smaller climbing structures and sensory play structures that will help smaller children engage with one another and the natural world around them as well while staying safe. Shaded areas and pavilions between the two play areas give parents a comfortable place to sit while watching their kids climb and play as they explore and let their curiosity take them over.



OPINION OF PROBABLE COST

Play Structure from Playground Creations \$350,000

TOTAL \$350,000



PLAYGROUND



OVERALL OPINION OF PROBABLE COST

Path 6” Thick gravel base, 39 SF	\$11,820
Plaza, Asphalt Pavers, 3367 SF	\$76,780
Bermuda Sod	\$79,560
Path, 4” thick, 4” gravel base, 8’ wide, 2491 LF	\$105,707
Estimated cost based on LF, 166 units at 30’ O.C.	\$44,405
Sport Courts	\$26,045
Food Trucks	\$11,185
Pavilions	\$525,000
Splash Pad	\$305,000
Dog Park	\$49,942
Playground	\$350,000

TOTAL **\$1,585,444**

Playground Image #1: Courtesy of Ken Erdoes with Landscape Structures
Playground Image #2: <https://www.moser-spiel.at/wp-content/uploads/2019/08/schule-als-lebensort-der-schulhof.pdf>
Playground Image #3: <https://chippewavalleyfamily.org/articles/2018/07/24/207882-a-prairie-playground-river-prairie-park-is-a>
Playground Image #4: <https://berliner-seilfabrik.com/en/reference/greensboro-childrens-museum/>
Playground Image #5: <https://www.earthscapeplay.com/project/log-tower-playground-dingle-park-halifax/>