



Athens-Clarke County CHaRM
(Center for Hard to Recycle Materials) Charrette

February 6-9, 2014
Center for Community Design and Preservation
College of Environment and Design
University of Georgia

The Process

“Ideas of Community”
Graduate Planning Studio –
Prof. Stephen Ramos

35 students



Initial inventory and analysis from
5 distinct perspectives for the first
3 weeks of Spring Semester 2014

1. Access and Circulation
2. Ecology
3. Beautification
4. Community Networks
5. Facilities

Community Design Charrette
Service-Learning Course –
Prof. Pratt Cassity, Jennifer Lewis

31 students



3-day 12-hour/day design
marathon with specific problem
statement.

More detailed analysis and
development of alternatives to
garner feedback in 3 sessions with
stakeholders.



Center for Hard to Recycle Materials (CHaRM) site, Athens, GA | February 7-9, 2014



CHaRM Charrette Findings

HEAL the LAND

Two Alternatives with Interchangeable Components

- 1 point of access
- 2 points of access

Interchangeable Components

- Canopy
- Incinerator
- Ecology
- Public Art
- Fencing
- Main Building
- Ridgeline Roadway and Activities
- Community Connections
- Branding
- Traffic Calming

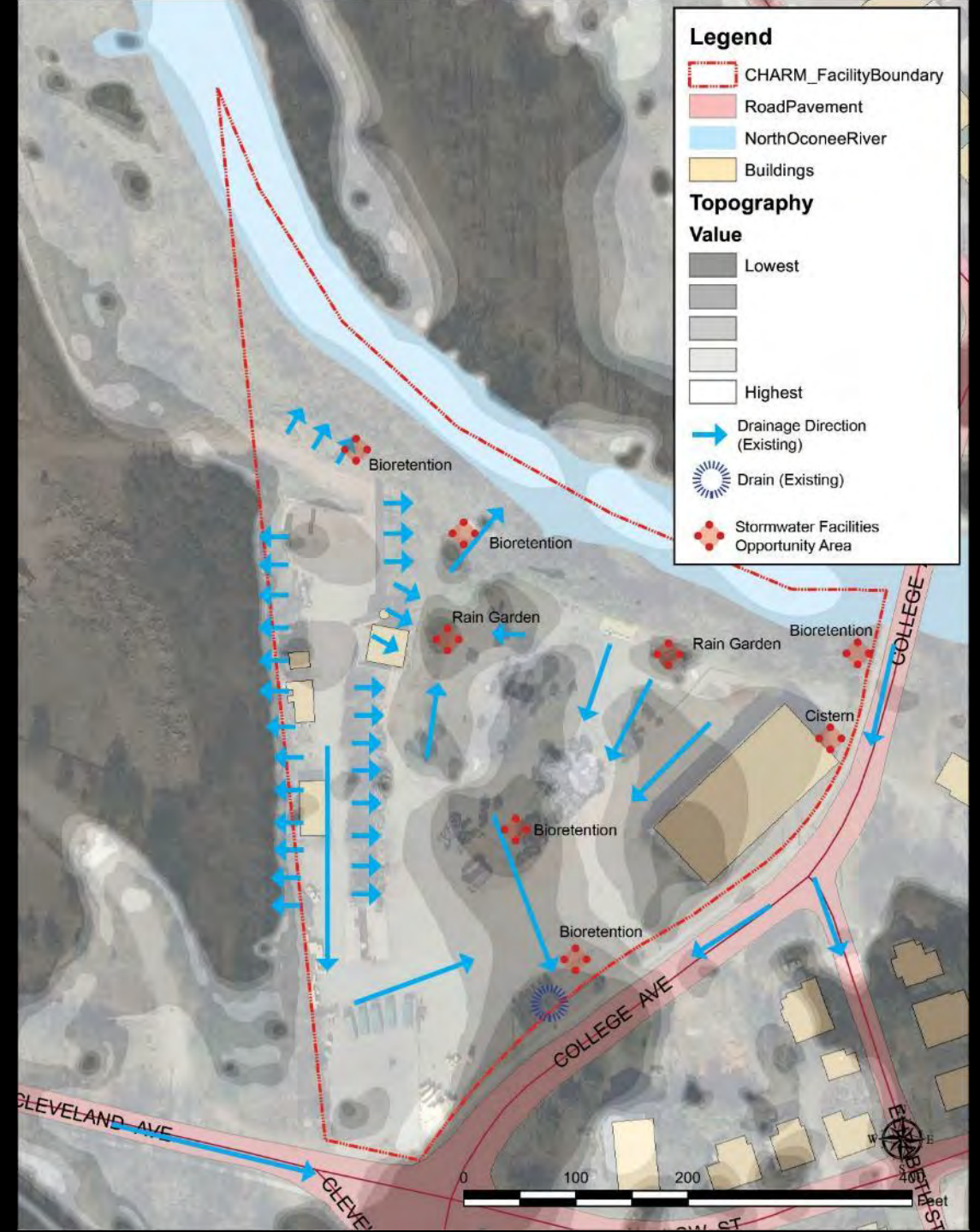
Water Management

Goals:

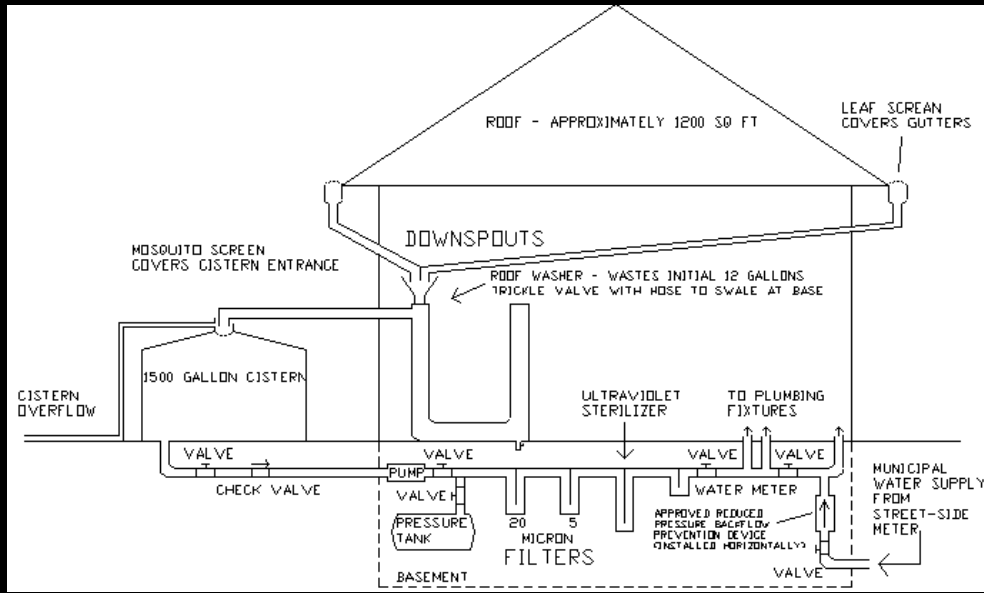
- Reduce impervious surface and increase infiltration
- Reduce direct run-off from the site
- Stormwater harvesting
- Increase vegetation coverage

Methods:

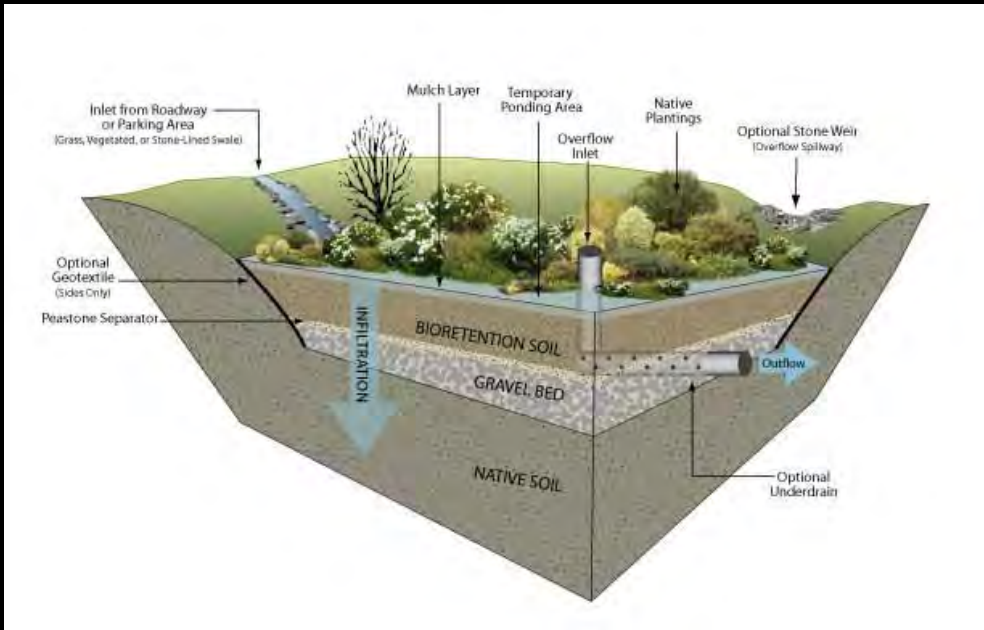
- Reduce run-off from the site
- Bio-retention and rain gardens increase infiltration
- Build cisterns to collect roof runoff
- Use phytoremediating plants where appropriate



Cisterns



Rain Gardens

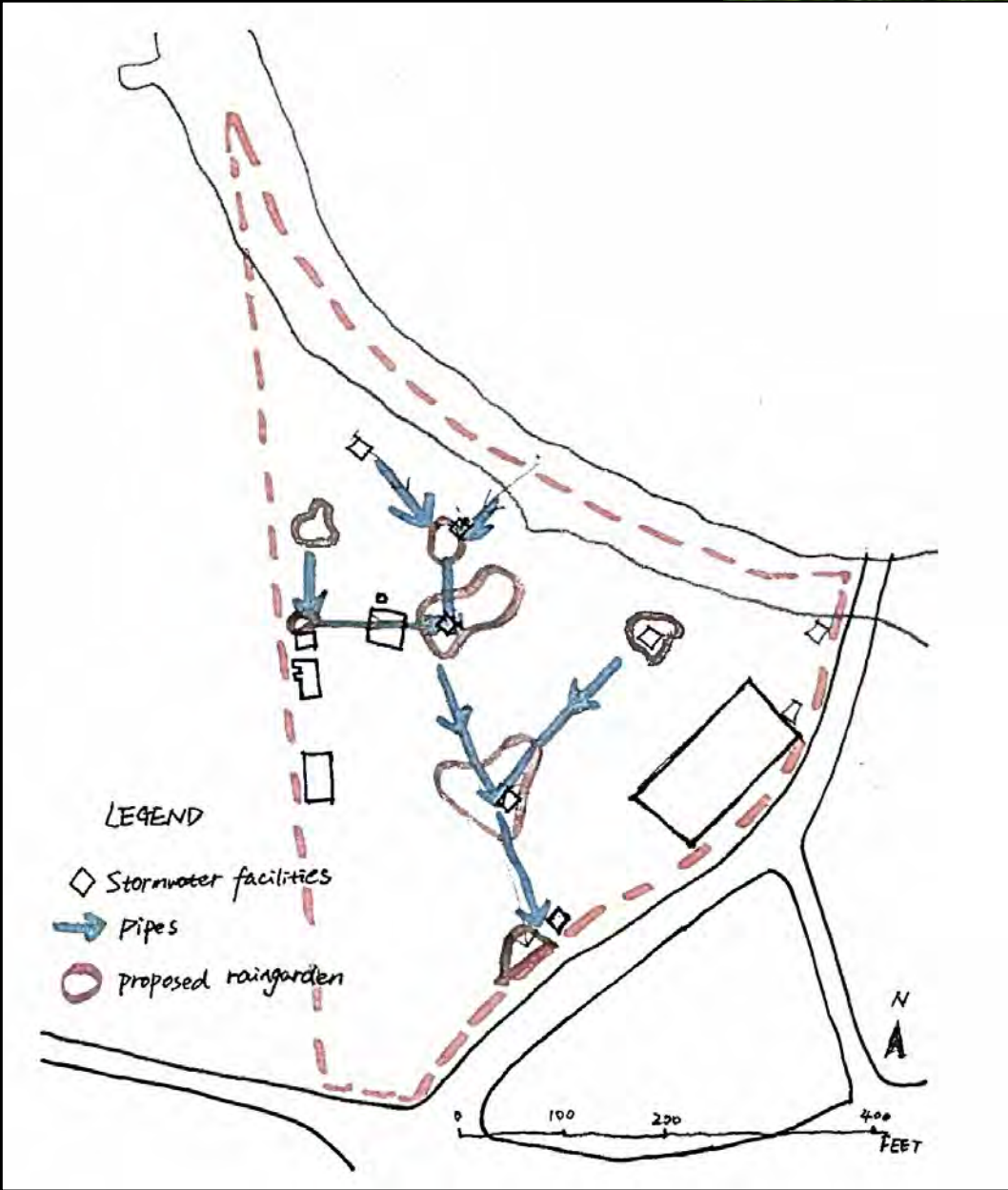


Bio-retention



Invasive Plant Removal

Proposed Areas for Rain Gardens



Single Egress



Double Egress



View from Northwest



Design Inspiration

Case Study: El Cerrito Recycling and Environmental Resource Center

City of El Cerrito, CA

Architect : Noll & Tam Architects

Contractor: Swinerton

Construction Cost: \$2.8 million

Completion Date: April 2012





El Cerrito Recycling and Environmental Resource Center Plan

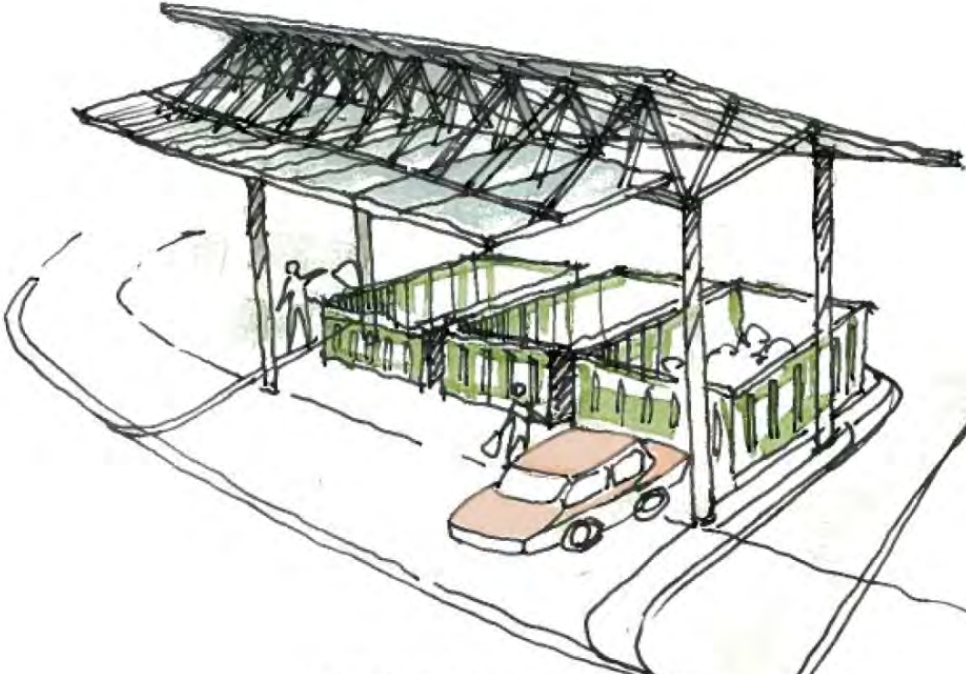
El Cerrito Plan applied to Athens CHaRM site



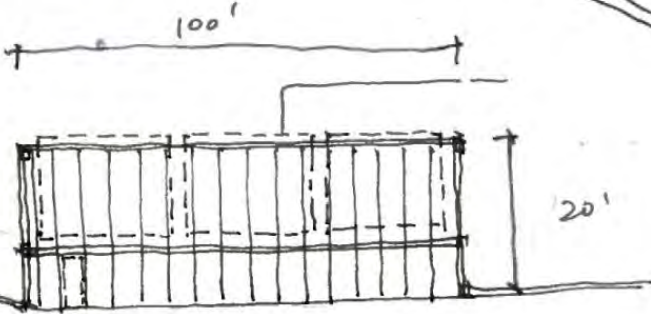
El Cerrito Recycling and Environmental Resource Center



Canopies for Other Site Features



PERSPECTIVE

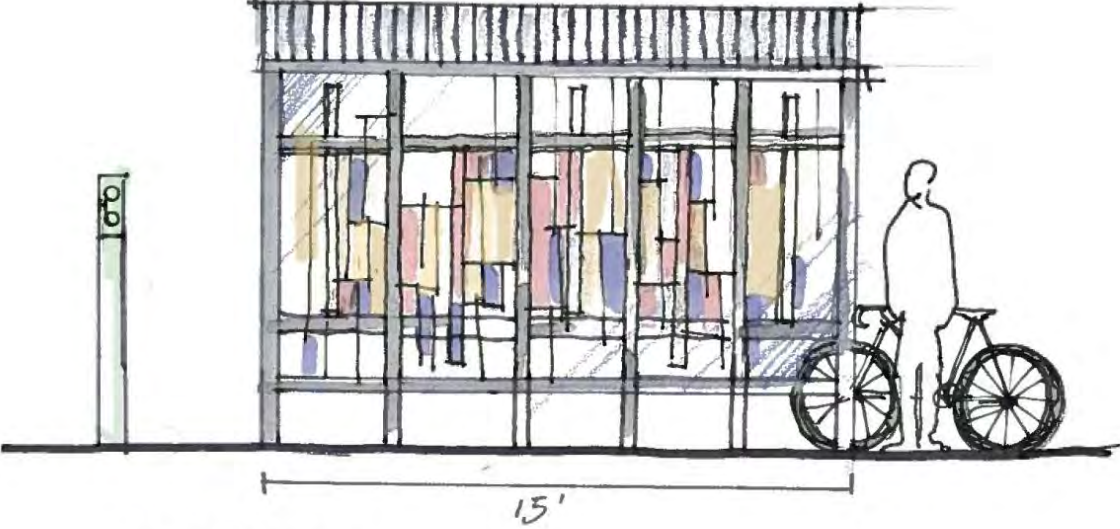


PLAN

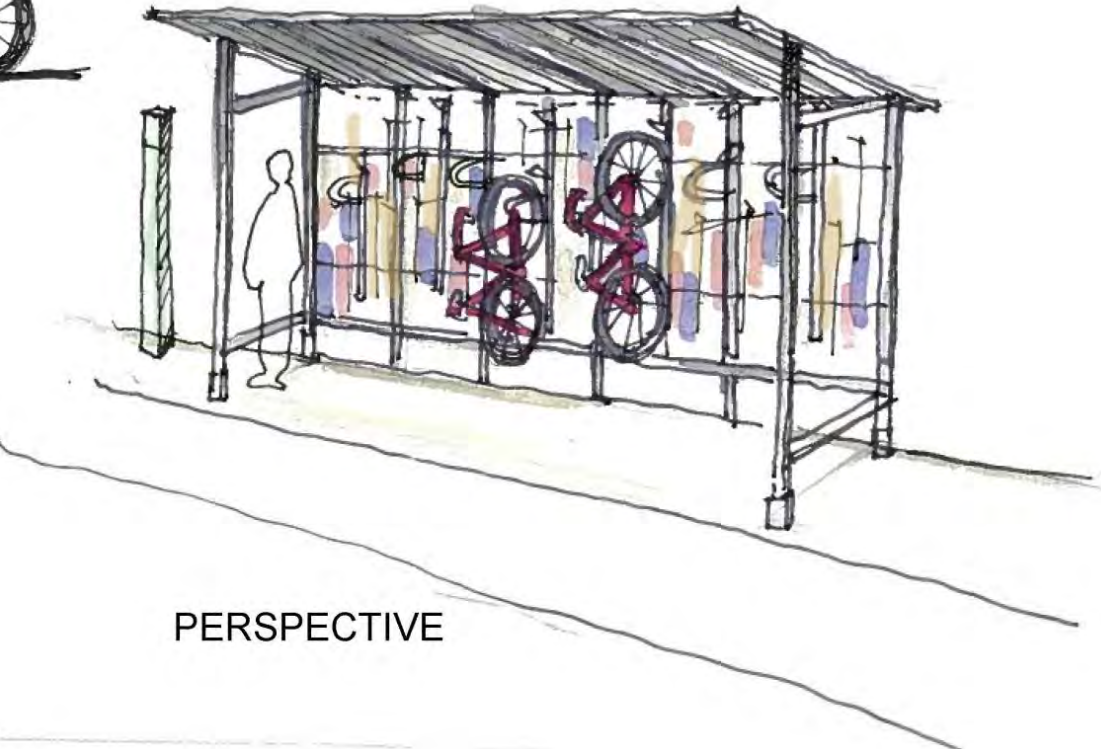


ELEVATION

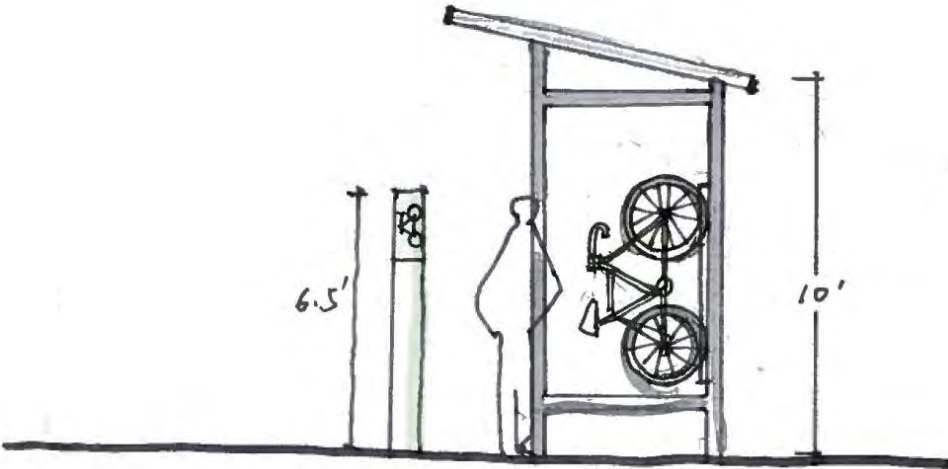
Inclusion of Site Features for Alternative Transport (Bike and Bus)



ELEVATION 1



PERSPECTIVE



ELEVATION 2



Please Flatten
Cardboard

RECYCLABLE ITEMS

DUMPING TRASH IN THIS BIN
IS ILLEGAL. VIOLATORS WILL
BE PROSECUTED TO THE FULL
EXTENT OF THE LAW.

athens
CHARM

RECYCLABLE ITEMS

DUMPING TRASH IN THIS BIN
IS ILLEGAL. VIOLATORS WILL
BE PROSECUTED TO THE FULL
EXTENT OF THE LAW.

i am eco
dec recycling division

MORE

MORE



RECYCLING
BINS

RECYCLING
BINS

WE DO
RECYCLE

NO DUMPING
OR BURNING
OF ANY
MATERIALS
EXCEPT
RECYCLABLES

NO DUMPING
OR BURNING
OF ANY
MATERIALS
EXCEPT
RECYCLABLES



ATHENS CENTER FOR HARD TO RECYCLE MATERIALS
CHRM







athens
CHRM
center for hard to recycle materials









ACKNOWLEDGEMENTS



HIPR 6680/4680 Charrette Course
Pratt Cassity, Jennifer Lewis

Master of Environmental Planning and Design
Shruti Agrawal, Chris Luly, Margit Pap, Kimberly Reeves, Yaowen Shi

Master of Landscape Architecture
Ying Chen, Trent (Jialiu) Cui, Sunny (Tianyi) Dong, Yiqian Liang, Jase (Juncheng) Lu, Allen Pratt, Yang Shen, Nico (Chengquezhuoni) Shen, Qianwen Sun, Xiwei Wu, Yiran Zhao

Bachelor of Landscape Architecture
Christopher Sawhill, Joseph Moon

Master of Historic Preservation
Elizabeth Elliott, Lauren Hughes, Victoria Leonard, Hollis Yates

Additional Charrette Participants:
Lindsay Pennin, Bachelor of Fine Arts – Sculpture; Danielle Schwartz, Honors Interdisciplinary Studies - Sustainable Design; Kira Hegeman, Master of Art Education

EDES 6540 Ideas of Community course
Professor Stephen Ramos

Corridor / Metropolitan Access / Multimodal Communication Group
Christopher Stebbins, Xiwei Wu, Alana Saul, Stephen Morgan, Yaowen Shi

Ecology / Topography / Water Group
Zhan Shi, Juncheng Lu, Yi Zheng, Gail Miller, Alex Smith

Aesthetic / Design / Beautification Group
Danielle Schwartz, Hiu Ting Li, Lee Bailey, Hugh Harker, Jack Matthews

Social / Economic / Education Group
Chapin Lachance, Yiran Zhao, Qianwen Sun, Ebunoluwa Odeyemi, Margit Pap

Infrastructure / Facilities Group
Tyler Johnson, Anna Averett, Hillary Essig, Chengquezhuoni Shen, Kasey Fulwood

A Special Thanks to:

Alan Reddish ACC County Manager
Richard White ACC Assistant Manager
Blaine Williams ACC Assistant Manager

Jim Corley ACC Solid Waste Director
Suki Janssen ACC Recycling Division, Waste Reduction Administrator
Joe Dunlop Commercial Recycling Specialist
Stacey Farrell Keep Athens-Clarke County Beautiful
Chris Griffin Household Hazardous Waste Specialist
Kristine Kobylus Program Education Specialist
Stacy Smith Keep Athens-Clarke County Beautiful
Cema F. Wallace ACC Recycling Division, Intern

Roger Cauthen ACC Landscape Management
Steve Decker ACC Transportation and Public Works, Traffic Engineer
Daniel Lawson ACC Leisure Services, Greenway Coordinator
Jerry Oberholtzer ACC Transportation and Public Works, Stormwater Mgmt
Keith Sanders SPLOST, Project Manager
Andrew Saunders ACC Environmental Coordinator

Doug Pardue Faculty, College of Environment & Design
Chris McDowell Material Reuse Program, Coll. of Environment & Design